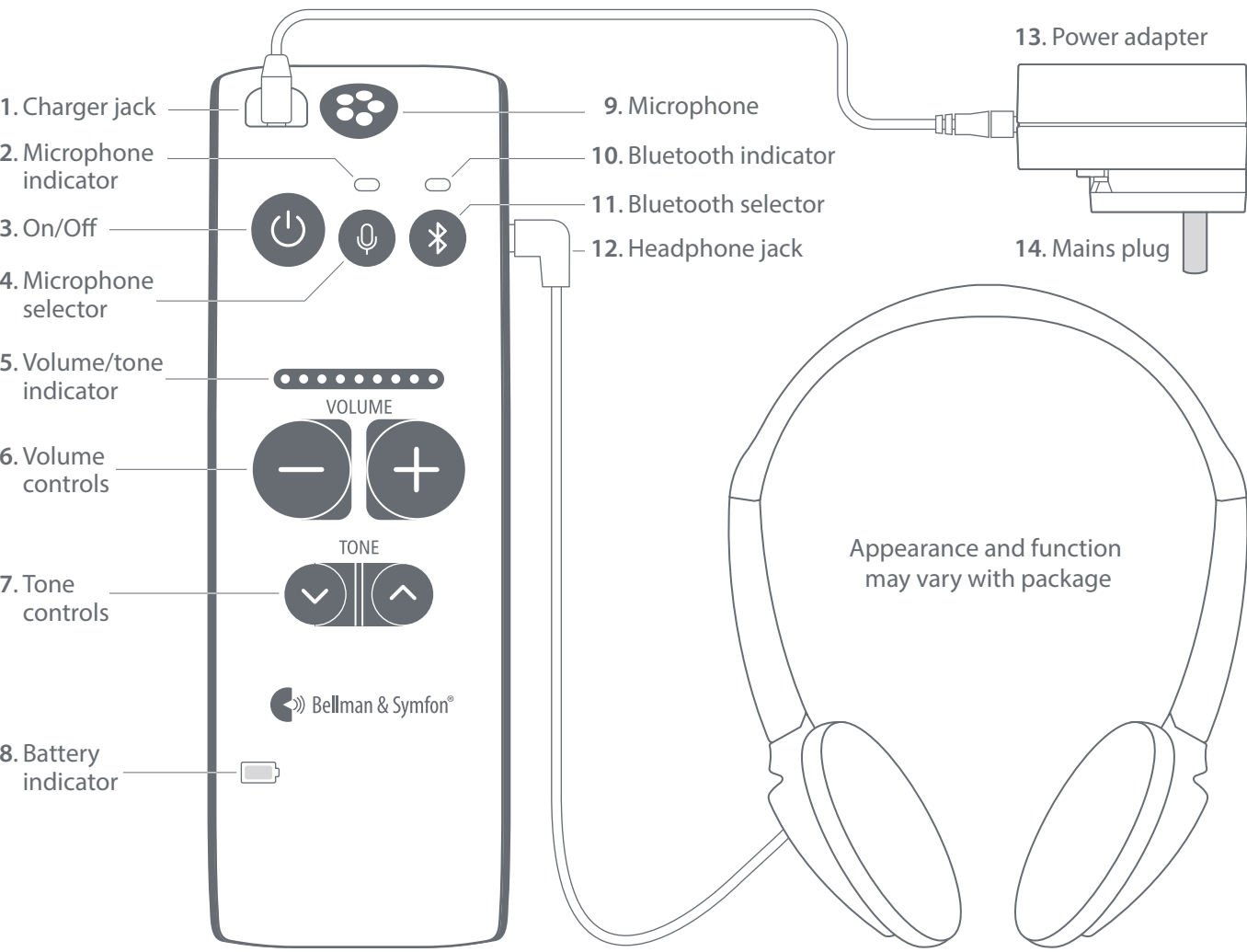


BE2021 Maxi Pro personal amplifier



About Maxi Pro

Maxi Pro is a digital speech amplifier that brings out the words so you can hear them loud and clear. Use Maxi to enhance the speech around the table, when you talk on the mobile phone or when you watch TV.

Getting started

Step 1: Charge Maxi

- 1 Connect the charging cable to the power adapter (13) and to the charger jack (1) marked in yellow.
- 2 Fit the mains plug (14) to the power adapter (13) and check that it is properly locked before connecting it to the power outlet.
- 3 The battery indicator (8) blinks in green during charging. After about three hours it emits a steady green light to show that that Maxi is fully charged.

Step 2: Connect Maxi

Connect the supplied headphones, earphones, headset, earset or neck loop to the Maxi headphone jack (12) marked in green.

Step 3: Start Maxi

Press the On/Off button (3) for about one second to start Maxi. The microphone indicator (2) lights up in green and the current volume is shown by the volume/tone indicator (5) for three seconds.

To switch Maxi off, press and hold the On/Off button (3) for about three seconds until all indicators go out.

Using Maxi to clarify speech

Maxi is equipped with a built in omni-directional microphone (9) that enhances speech. Place Maxi on a table close to the person talking, hold it in your hand or attach it to your clothes using the clip.

Adjusting the volume

Press **+** on the volume controls (6) to increase the volume and **-** to decrease it. The microphone volume can be adjusted in 9 steps and the TV and mobile phone volume in 15 steps. The level is shown in the volume/tone indicator (5).

Note: Every time you turn on Maxi, the volume is set to low to avoid unpleasant sound levels.

Adjusting the tone

Press the **^** on the tone controls (7) to increase the treble and the **v** to decrease it. The treble can be adjusted in 5 steps and is visible in the volume/tone indicator (5).

Using Maxi with your mobile phone

Pairing

- 1 Make sure that your Maxi is in microphone mode by pressing the microphone selector (4).
- 2 Press and hold the Bluetooth selector (11) until the Bluetooth indicator (10) starts to blink in blue.
- 3 Make sure Bluetooth is activated on your mobile phone. Open the Bluetooth menu in Settings and select "Maxi Pro" in the list.
- 4 The Bluetooth indicator will emit a steady blue light to show that the pairing was successful.

Note: If your phone has been disconnected from Maxi, you need to reconnect the units by repeating step 3.

Answering a phone call

- 1 When the mobile phone rings, the Maxi Bluetooth indicator (10) blinks in blue. All other sounds are muted and you'll hear the ring signal in your headphones.
- 2 To **answer** the call, press the Maxi Bluetooth selector (11) or use the remote on your headset. You will now hear the enhanced voice of the caller in your headphones. Your voice will be picked up by the Maxi microphone.

- 3 To **hang up**, press the Bluetooth selector once more.

Note: To **decline** an incoming call, press and hold the Maxi Bluetooth selector for three seconds.

Making a phone call

When you talk on the mobile phone, you hear the enhanced voice of the recipient in your headphones. Your voice will be picked up by the Maxi microphone.

Streaming music

Play a song on your mobile phone and press the Maxi Bluetooth selector (11) until you hear the music.

Using a headset with microphone

When you talk over the phone, the sound will be picked up from the headset remote microphone instead of the Maxi microphone.

Using Maxi for TV listening

In order to stream the sound from your TV, you need a Maxi Pro TV streamer, see separate user manual for installation instructions.

Listening to the TV

Turn on the TV, select a show and press the Maxi Bluetooth selector (11) until you hear the TV.

Note: If you get a call during the show, the sound from the TV will be muted, so you can hear the caller's voice clearly. When you hang up, the sound from the TV will automatically come back.

Automatic reconnection

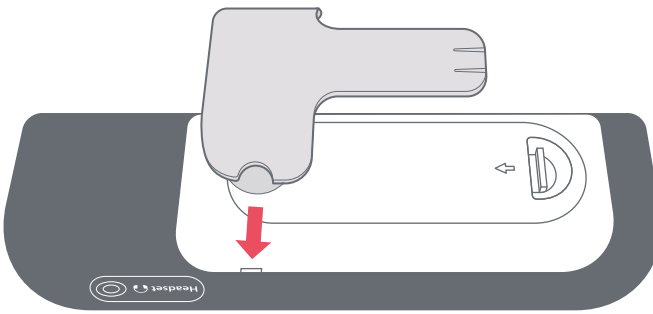
Maxi will automatically reconnect to your TV streamer as soon as it's within range, so you can bring Maxi when you visit family and friends without hassle.

Battery and charging

Maxi is equipped with a rechargeable battery that lasts for up to 70 hours. When the battery indicator (8) starts to blink in red, it's time to charge it, see **Charge Maxi**.

Attaching the clip

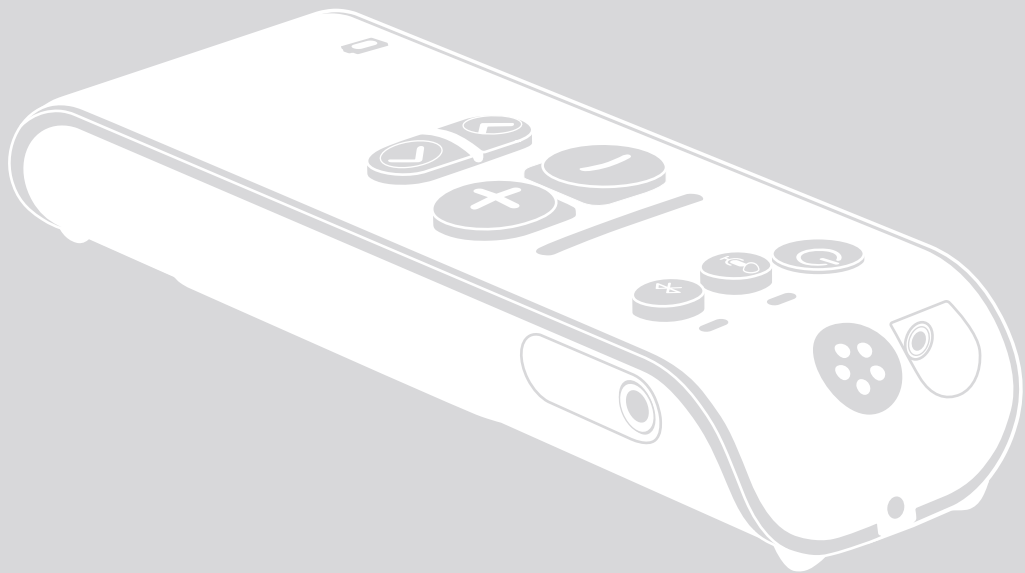
To attach the clip, place the clip against the back cover and press firmly until it locks. To remove it, pull the round handles out from the sides.





BE2021_007MAN003

DESIGN FOR EARS™



BE2021
BELLMAN & SYMFON AB
ENGLISH



Troubleshooting

Most problems with Maxi Po can be solved quickly by following the advice below.

If

Try this

I can't get the units to pair via Bluetooth.

- Make sure that your Maxi is in microphone mode by pressing the microphone selector (4). Try pairing the units again by following the steps in the section **Pairing**.

Nothing happens when I press the Maxi On/Off button.

- The batteries are depleted. Charge Maxi, see **Charge Maxi**.
- The battery level is low. Charge Maxi, see **Charge Maxi**.

I hear no sound in my headphones, even though Maxi is turned on.

- Check that the headphone plug is properly connected to the Maxi headphone jack (12).
- Increase the volume by pressing the + on the Maxi volume controls (6).
- Connect the headphones to another device, like a smart phone, and check if you hear any sound. If not, the headphones may need to be replaced.
- If Bluetooth mode is selected, make sure that the TV streamer or mobile phone is within range, paired and streaming a sound.

I don't hear the mobile phone in my headphones.

- Make sure Bluetooth is activated on your mobile phone and that it is paired with your Maxi, see **Pairing** in the **Using Maxi with your mobile phone** section.

I don't hear the sound of the TV in my headphones.

- Make sure the TV streamer is within range and paired with your Maxi, see **Pairing** in the **Using Maxi for TV-listening** section.

The sound from the TV or mobile is too low, even though the Maxi volume is at the highest level.

- Try to increase the volume on your TV or mobile phone instead.

I hear a high-pitched noise in my headphones.

- Lower the volume or increase the distance between Maxi and the headphones.
- Direct the Maxi microphone (9) away from you.

Maxi seems unresponsive/frozen.

- Press and hold the On/Off button (3) for ten seconds until Maxi turns off.
- Press the On/Off button for about one second to start Maxi again.

Care and maintenance

Using the product

Operate the product in a dry environment where the temperature is always between 0° and 35° C.

Cleaning

Clean the product with a soft, lint-free cloth. Avoid getting moisture in openings. Don't use window cleaners, household cleaners, aerosol sprays, solvents, alcohol, ammonia, or abrasives.

Service and warranty

If the product appears to be damaged or doesn't function properly, follow the instructions in this leaflet. If the product still doesn't function as intended, contact your local dealer for information on service and warranty.



Support centers

Europe

Bellman & Symfon AB
Södra Långebergsgatan 30
Askim, Västra Götaland
436 32, Sweden
Call +46 31 7483750
E-mail info@bellman.com

North America

Bellman & Symfon Service Center
1081 West Innovation Drive
Kearney, MO 64060, U.S.A
Call +1 877 720 3401 Toll Free

Germany

Bellman & Symfon Deutschland
Uelzener Str. 14
21335 Lüneburg
Call +49 800 7433338
E-mail info@bellman.de

Asia Pacific

Bellman & Symfon Asia
339 Huanshi Dong Rd
Guangzhou, China, 510095
Call +86 20 8318 2950
E-mail info.cn@bellman.com

BE2022_024WCD002
© and TM 2018 Bellman & Symfon AB. All rights reserved.





Warranty card

ENGLISH



Important safety instructions

This section contains important information about safety, handling, disposal, recycling and warranty.



Note: Read all safety information and instructions before using the product. Keep the user manual for future use.

Warning!

- Failure to follow these safety instructions could result in fire, electric shock, or other injury or damage to the product or other property.
- Do not use or store this product near any heat sources such as naked flames, radiators, ovens or other devices that produce heat.
- Protect the cable from any potential source of damage.
- Use only power adapters and accessories specified in this manual.
- Only refer a damaged or faulty product to qualified service personnel.
- Do not dismantle the product; there is a risk of electric shock. Tampering with or dismantling the product will void warranty.
- This product is designed for indoor use only.
- Do not expose the product to moisture.
- Protect the product from shocks during storage and transport.

Care and cleaning



Note: Failure to follow these care and cleaning instructions could result in damage to the product and void the warranty.

Battery charging and replacement



Warning! The Maxi Pro is powered by a rechargeable lithium-polymer battery. Do not expose the battery to fire or to direct sunlight. The battery should only be changed by Bellman & Symfon or an authorized service center. There is a risk of explosion if the battery is not replaced correctly. The battery should be charged fully before using the product for the first time. Only charge the battery in a temperature between 0°–35°C, 32°–95°F.

Using the product

Operate the product in a dry environment where the temperature is always between 0°–35°C, 32°–95°F. Do not use or store the products near a heat source. If the product gets wet or is exposed to moisture, it should no longer be regarded as reliable and should therefore be replaced.

Cleaning

Use a soft, lint-free cloth. Avoid getting moisture in openings. Don't use window cleaners, household cleaners, aerosol sprays, solvents, alcohol, ammonia, or abrasives.

Service and Warranty

If the product appears to be damaged or doesn't function properly, follow the instructions in this leaflet. If the product still doesn't function as intended, contact your local dealer for information on service and warranty.

Warranty Conditions

Bellman & Symfon guarantees this product for two years from date of purchase against any defects that are due to faulty materials or workmanship. This guarantee only applies to normal conditions of use, and does not include damage resulting from accident, neglect, misuse, unauthorized dismantling, or contamination howsoever caused. This guarantee excludes incidental and consequential damage.

Model, type and classification

The information is available at the back of the product.

Product disposal and recycling information



The symbol to the left means that according to local laws and regulations your product should be disposed of separately from household waste. When this product reaches its end of life, take it to a collection point designated by local authorities.

Battery disposal information



This symbol indicates that the product contains batteries that according to local laws and regulations must be disposed of separately from household waste. Take used batteries to a collection point designated by the authorities.

EU Declaration of conformity



Hereby, Bellman & Symfon AB declares that this wireless device is in compliance with the essential requirements and other relevant provisions of the R&TTE Directive.

A copy of the EU Declaration of Conformity may be consulted at: Bellman & Symfon, Södra Långebergsgatan 30, 436 32 Askim, Sweden.

FCC compliance statement

This device complies with Part 15 of the FCC Rules. Operation is subject to the following two conditions: (1) this device may not cause harmful interference, and (2) this device must accept any interference received, including interference that may cause undesired operation.

Warning: Changes or modifications to this unit not expressly approved by the party responsible for compliance could void the user's authority to operate the equipment.

Note: This equipment has been tested and found to comply with the limits for a Class B digital device, pursuant to Part 15 of the FCC Rules. These limits are designed to provide reasonable protection against harmful interference in a residential installation. This equipment generates, uses and can radiate radio frequency energy and, if not installed and used in accordance with the instructions, may cause harmful interference to radio communications. However, there is no guarantee that interference will not occur in a particular installation. If this equipment does cause harmful interference to radio or television reception, which can be determined by turning the equipment off and on, the user is encouraged to try to correct the interference by one or more of the following measures:

- Reorient or relocate the receiving antenna.
- Increase the separation between the equipment and receiver.
- Connect the equipment into an outlet on a circuit different from that to which the receiver is connected.
- Consult the dealer or an experienced radio/TV technician for help.

Canadian compliance statement

This device complies with Industry Canada licence-exempt RSS standard(s). Operation is subject to the following two conditions: (1) this device may not cause interference, and (2) this device must accept any interference, including interference that may cause undesired operation of the device.

Le présent appareil est conforme aux CNR d'Industrie Canada applicables aux appareils radio exempts de licence. L'exploitation est autorisée aux deux conditions suivantes: (1) l'appareil ne doit pas produire de brouillage, et (2) l'utilisateur de l'appareil doit accepter tout brouillage radioélectrique subi, même si le brouillage est susceptible d'en compromettre le fonctionnement.

This Class B digital apparatus complies with the Canadian ICES-003.

Bluetooth® certified

This device includes a Bluetooth module which has passed the BQB certificate. The Bluetooth word mark and logos are owned by the Bluetooth SIG, Inc., and any use of such marks by Bellman & Symfon is under licenses.



Technical specifications

BE2021 Maxi Pro

Intended Use

Assistive listening device that enhances speech to facilitate listening during conversations, telephone calls and television viewing.

Dimensions and Weight

Size: 140 × 27 × 45 mm, 5.5 × 1.1 × 1.8"

Weight: 127g, 4.3 oz.

Frequency and Coverage

Bluetooth frequency: 2402 – 2480 MHz

Coverage: Up to 25 m, 27.5 yd, free field.

Connectivity: Bluetooth® aptX®-LL

Power Supply

Battery power: 2 × 3.7V 750mAh Li-on

Operating time: Up to 70 h

Power consumption: 18 mA

Connections

Headphones input: 3.5 mm jack

Charger input: 2.5 mm connector, 5V DC, 1000mA

Microphone

Built-in omnidirectional microphone

Output signal

Output level with **BE9124**:

135dB@1kHz (SPL90)

136dB (HF Ave.SPL90)

Full-on gain: 49dB@1kHz,

Ref. test gain: 49dB@1kHz (SPL70)

Output level with **BE9122**:

122dB@1kHz (SPL90)

127dB (HF Ave.SPL90)

Full-on gain: 36dB@1kHz,

Ref. test gain: 36dB@1kHz (SPL70)

Output level with **BE9125**:

136dB@1kHz (SPL90)

133dB (HF Ave.SPL90)

Full-on gain: 43dB@1K,

Ref. test gain: 43dB@1 kHz (SPL70)

Mic SNR:

53dB @1kHz 1%THD (electrical)

Distortion:

0.2% THD@1 kHz -6dB@1% THD (Mic electrical)

Bluetooth SNR:

85dB @1kHz 1%THD (BT with TV streamer)

Freq. range: 20Hz-8kHz (Mic), 20Hz-20kHz (Bluetooth)

Output power: Max 82mW @1kHz/16Ω (THD=1%)

Environmental Requirements

Operating temperature: 0°-35° C, 32°-95° F

Relative humidity: 5% - 95% (non condensing)

Standard accessories

BE9254 Bellman Audio Charger Cable

BE9273 Bellman Audio Universal Charger

Optional accessories

BE9122 Bellman Audio Headphones

BE9124 Bellman Audio Earphones

BE9233 Bellman Audio Headset with Microphone

BE9229 Bellman Audio Earphones with Microphone

BE9125 Bellman Audio Stetoclips

BE9159 Bellman Audio Neck loop

BE9161 Bellman Audio Neck loop

BE9262 Bellman Audio Universal Charger

BE9176 Bellman Audio Universal Charger

BE9139 Bellman Audio Charger Cable

BE2022 Maxi TV streamer

Intended Use

Television streamer device to be used at home in combination with the Maxi Pro assistive listening device for television volume amplification.

Dimensions and Weight

Size: 88 × 24 × 48 mm, 3.5 × 0.9 × 1.9"

Weight: 70 g, 2.5 oz.

Frequency and Coverage

Bluetooth frequency: 2402–2480 MHz

Coverage: Up to 25 m, 27.5 yd, free field.

Connectivity: Bluetooth® aptX®-LL

Power

Power consumption: 31 mA

Connections

Audio input: 3.5 mm jack

Audio input sensitivity @ max 2Vrms: +6 dBV

Optical input: 44.1KHz, 48KHz

Optical input sensitivity: 0 dBFS

Charger input: 2.5 mm connector, 5V DC, 1000mA

Charging output: USB type A

Environmental Requirements

Operating temperature: 0°-35° C, 32°-95° F

Relative humidity: 5% - 95% (non condensing)

Standard accessories

BE9123 Bellman Audio Cable Kit

BE9228 Bellman Audio Optical Cable

BE9254 Bellman Audio Charger Cable

Optional accessories

BE9273 Bellman Audio Universal Charger

BE9262 Bellman Audio Universal Charger

BE9176 Bellman Audio Universal Charger

BE9139 Bellman Audio Charger Cable

