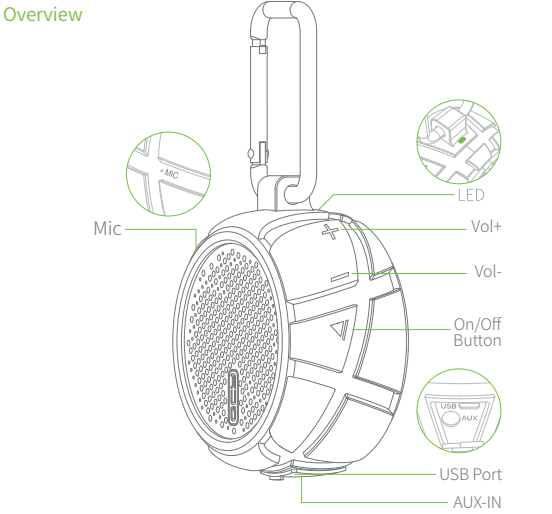
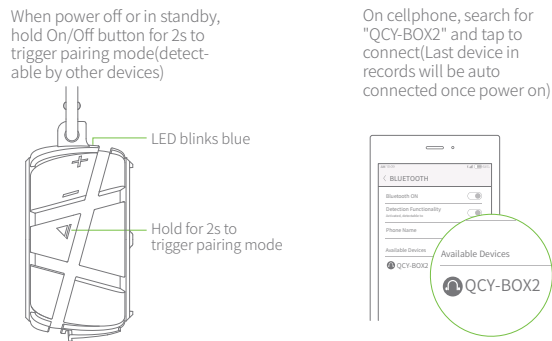


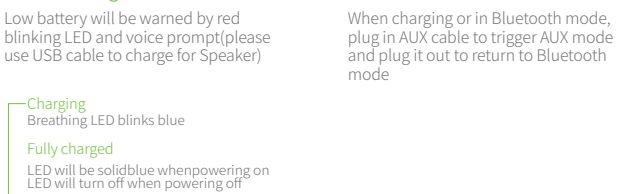
Overview



How to Connect



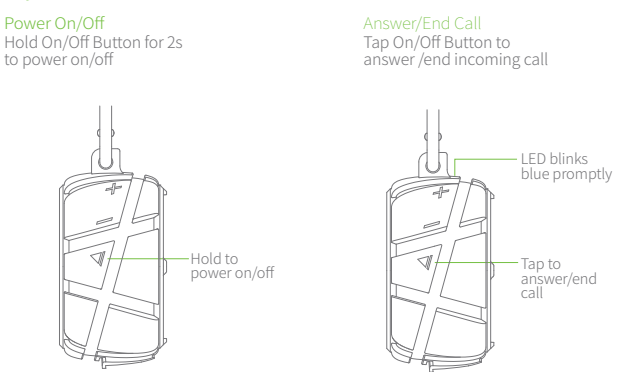
How to Charge



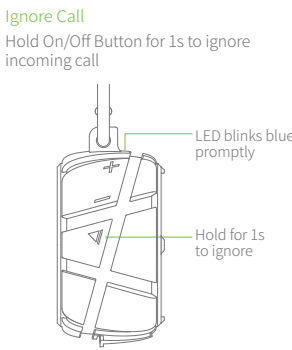
AUX Mode

When charging or in Bluetooth mode, plug in AUX cable to trigger AUX mode and plug it out to return to Bluetooth mode

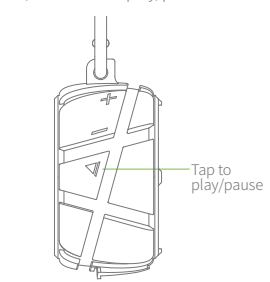
Key Function



Key Function



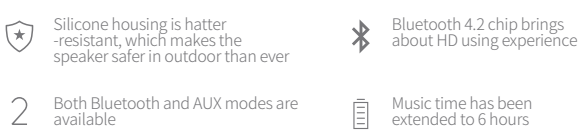
Play/Pause Music



Volume Control
When playing or calling(even charging), tap vol+/- to track forward/backward
Skip Track
When playing music(even charging), hold vol+/- to track forward/backward
Voice Assistant
When standby or charging, hold On/Off Button to activate voice assistant(like Siri)
Switch Audio Output Between Speaker and Cellphone
When calling, hold On/Off Button for 1s to switch audio output
Mute On/Off
When calling(even charging), double tap On/Off Button to switch mute on/off

Basic Parameter
Model:QCY-BOX2
Operation Range: 10m
Standby Time: approx. 100hr
Weight: 189g
Input Parameter: 5V 500mA
Size: 90×80×45mm±
Bluetooth Version: V4.2
Charging Time: approx. 2hr
Music Time: approx. 5 or 7hr
Bluetooth Profile: HFP/A2DP/HSP/AVRCP
Battery Capacity: 3.7V 1000mAh
Battery Type: Li-ion

Function



Both Bluetooth and AUX modes are available
Music time has been extended to 6 hours

After Service and Support

1. Warranty Period
1)Returning: 1 year after you purchase this item.
2)Repairing: 2 years after you purchase this item.
2. Free Returning will Only be Accessed under All of Following Circumstances
1) 1 year after you purchase this item.
2)Three completed guarantee receipts have to be provided to distributor(item model No.,sales date and item serial No. shall be displayed on invoiceand warranty card).
3)Required item has to be with full package and accessories.
4)Malfunction has to be caused by quality deficiencies.
Notes: Exchanged item will have the same model No. and Spec. as your required one's.
3. Free Repairing will Only be Accessed under All of Following Circumstances
1) 2 years after you purchase this item.
2)Three completed guarantee receipts have to be provided to distributor(item model No.,sales date and item serial No. shall be displayed on invoiceand warranty card).
3) Malfunction has to be caused by quality deficiencies.
Free repairing & returning will not be accessed under following circumstances
A: Item is out of warranty period or effective sales receipt and warranty card fail to be provided.
B: Breakdowns of housing, bags, gifts and accessories or any non-functional fault.
C: Unauthorized disassembly, breakdowns caused by improper operation or using in environment which is forbidden in user's manual.
D: Artificial damages(including but not limiting to leaking,damped, dropping off, squeezing, breaking, burning and distortion).
E: Faults caused by force Majeures(such as earthquake, fire and flood).
For any after service, please contact local distributor
Manufacturer: Dongguan Hele Electronics Co.,Ltd.
Address: Dalingya Industrial Zone, Daojiao Town, Dongguan City, Guangdong Province(QCY Environmental Zone; Dalingya No.5, Yuehui Road)
Perform standard:Q/HL 1-2016

Hazardous substances and their contents in the item

Part Name	Hazardous Substances					
	(Pb)	(Hg)	(Cd)	(Cr(VI))	(PBB)	(PBDE)
Main body	X	O	O	O	O	O
Battery	O	O	O	O	O	O
Ear tips	O	O	O	O	O	O
Accessories	O	O	O	O	O	O
Charging cable	X	O	O	O	O	O

This form is made by SJ/T 11364 regulation.
X: means that hazardous substance content in the homogeneous materials of this part is within the limit of GB/T 26572 regulation.
O: means that hazardous substance content in, at least,one certain homogeneous material of this part is beyond the limits of GB/T 26572 regulation.

Lifespan
As the booklet states, the eco-lifespan of the item is 5 years while using it in normal ways. During the period, no dangerous material will be leaked. The item must be recycled by the local law.

Tips

1.Before using the headset, please read the manual carefully and keep it for future references.
2.The headset need to be fully charged prior to first-time use.
3.If the headset is left unused for over two weeks,please recharge it periodically.
4.Please use the chargers made by qualified manufacturer.
5.If the headset cannot be searched by your phone, please check whether it is in pairing mode; if left unconnected for a long while, the headset will exit pairing mode,please re-enter the mode; if a procedure error of your phone occurs, reboot it; if a procedure error of the headset occurs, reboot or reset it.

Caveats

1.Never disassemble or modify your headset for any reasons to avoid any damages and danger.
2.Do not store the headset in extreme temperatures(under 0°C or over 45°C).
3.Avoid using the indicator close to the eyes of children or animals.
4.Do not use this headset during a thunderstorm to avoid irregular function and increased risk of electric shock.
5.Do not use harsh chemicals or strong detergents to clean the headset.
6.Keep the headset dry.
Notes: Please arrange using time properly since your hearing may be damaged by using the device for a long time.

FCC Statement

This equipment has been tested and found to comply with the limits for a Class B digital device, pursuant to Part 15 of the FCC Rules. These limits are designed to provide reasonable protection against harmful interference in a residential installation. This equipment generates uses and can radiate radio frequency energy and, if not installed and used in accordance with the instructions, may cause harmful interference to radio communications. However, there is no guarantee that interference will not occur in a particular installation. If this equipment does cause harmful interference to radio or television reception, which can be determined by turning the equipment off and on, the user is encouraged to try to correct the interference by one or more of the following measures:

--Reorient or relocate the receiving antenna.
--Increase the separation between the equipment and receiver.
--Connect the equipment into an outlet on a circuit different from that to which the receiver is connected.
--Consult the dealer or an experienced radio/TV technician for help.
This device complies with part 15 of the FCC Rules. Operation is subject to the following two conditions:
(1) This device may not cause harmful interference, and (2) this device must accept any interference received, including interference that may cause undesired operation.
Changes or modifications not expressly approved by the party responsible for compliance could void the user's authority to operate the equipment.

CMYK



PANTONG Cool Gray 9C



东莞市和乐电子有限公司						
资料确认表	料号	30.001.061899	软件		法务	
	名称	BOX2英文说明书	电子		品牌	
	材质	105g哑粉3色1专印刷过哑油	结构		包装	
	工艺	折叠页	声学			
	CER编号		市场			