

POWERTHRU™ 2-IN-1 CHARGING STAND MAGSAFE COMPATIBLE

User Manual

NOTE:

This device complies with part 15 of the FCC Rules and contains licence-exempt transmitter(s)/receiver(s) that comply with

Innovation, Science and Economic Development Canada's licence-exempt RSS(s). Operation is subject to the following two conditions: (1) this device may not cause harmful interference, and (2) this device must accept any interference received, including interference that may cause undesired operation. The distance between user and products should be no less than 20cm.

This device has been tested and found to comply with the limits for a Class B digital device, pursuant to Part 15 of the FCC Rules. These limits are designed to provide reasonable protection against harmful interference in a residential installation.

This equipment generates, uses, and can radiate radio frequency energy, and, if not installed and used in accordance with the instructions, may cause harmful interference to radio communications. However, there is no guarantee that interference will not occur in a particular installation. If this equipment does cause harmful interference to radio or television reception, which can be determined by turning the equipment off and on, the user is encouraged to try to correct the interference by one or more of the following measures:

- Reorient or relocate the receiving antenna.
- Increase the separation between the equipment and receiver.
- Connect the equipment to an outlet on a circuit different from that to which the receiver is connected.

- Consult the dealer or an experienced radio/TV technician for help.

Changes or modifications not expressly approved by the party responsible for compliance could void your authority to operate the equipment.

ISED STATEMENT
This device contains licence-exempt transmitter(s)/receiver(s) that comply with Innovation, Science and Economic Development Canada's licence-exempt RSS(s). Operation is subject to the following two conditions: (1) This device may not cause interference. (2) This device must accept any interference, including interference that may cause undesired operation of the device.

ADVERTENCIA IC Cet appareil contient des émetteurs / récepteurs exemptés de licence conformes aux RSS (RSS)d'Innovation, Sciences et Développement économique Canada. Le fonctionnement est soumis aux deux conditions suivantes : (1) Cet appareil ne doit pas causer d'interférences. (2) Cet appareil doit accepter toutes les interférences, y compris celles susceptibles de provoquer un fonctionnement indésirable de l'appareil.

This device complies with ISED RF radiation exposure limits set forth for an uncontrolled environment.

NCC 警告语:

取得審驗證明之低功率射頻器材，非經核准，公司、商號或使用者均不得擅自變更頻率、加大功率或變更原設計之特性及功能。低功率射頻器材之使用不得影響飛航安全及干擾合法通信；經發現有干擾現象時，應立即停用，並改善至無干擾時方得繼續使用。

前述合法通信，指依電信管理法規定作業之無線電通信。低功率射頻器材須忍受合法通信或工業、科學及醫療用電波輻射性電機設備之干擾。

Without permission granted by the NCC, any company, enterprise, or user is not allowed to change frequency, enhance transmitting power or alter original characteristic as well as performance to a approved low power radio-frequency devices. The low power radio-frequency devices shall not influence aircraft security and interfere legal communications; If found, the user shall cease operating immediately until no interference is achieved.

The said legal communications means radio communications is operated in compliance with the Telecommunications Management Act.

The low power radio-frequency devices must be susceptible with the interference from legal communications or ISM radio wave radiated devices.

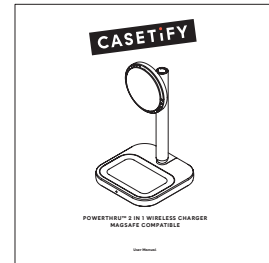
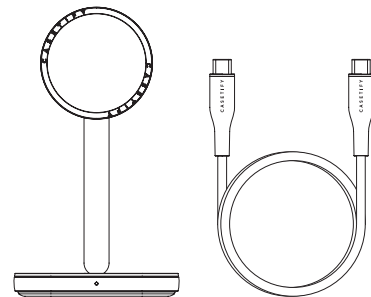


WARNING:
Cancer & Reproductive Harm
www.P65Warnings.ca.gov

FCC ID: 2ASRV-232120FRE
IC: 26753-232120FR
KC: R-R-YFI-CTF-T-ATE

進口商：香港商殼子特玩有限公司台灣分公司
委製商：CASETAGRAM LIMITED
地址：台北市松山區南京東路4段50號12樓之1
電話：02-77096805

CASETAGRAM LIMITED
18/F, NEO, 123 Hoi Bun Road, Kwun Tong, Hong Kong
www.CASETiFY.com
Made in China/中國製造

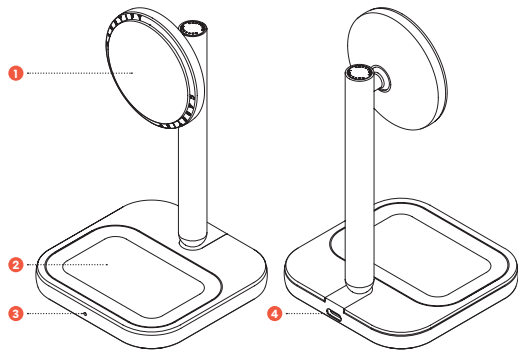


PACKAGE CONTENTS

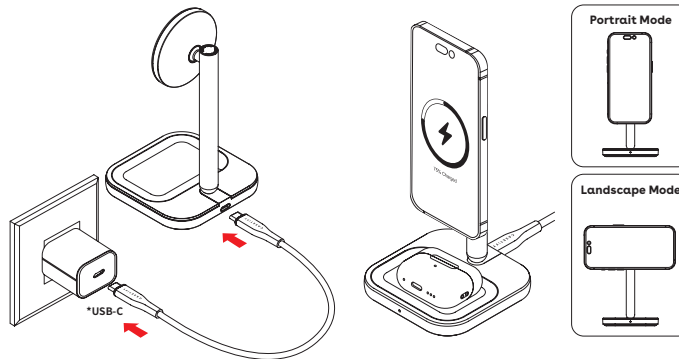
- 1 PowerThru™ 2-in-1 Wireless Charging Stand
- 1 Charging Cable
- 1 User Manual

PRODUCT OVERVIEW

- 1 Magnetic Charging Pad
- 2 Earbud Charging Pad
- 3 LED Indicator
- 4 USB C Charging Port



INSTRUCTIONS



Step 1

Before Use

Connect power supply via USB-C Cable

* Power supply is not included

Step 2

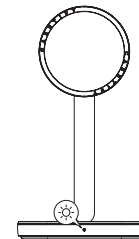
Place your mobile phone & earbuds case to appropriate charging location.

SPECIFICATIONS

| | |
|---------------------|---------------------------|
| Model No | CTF-T-ATE-232120FRE |
| Product | CTF-T-ATE-232120FREWHX |
| Input | 5V = 3A/9V = 3A/12V = 2A |
| Output 1 | 5W / 7.5W / 10W / 15W Max |
| Output 2 | 5W Max |
| Charging Distance | ≤6mm |
| Frequency Band | 110k Hz - 205k Hz |
| Working Temperature | 0 - 40°C |
| Storage Temperature | -10 - 60°C |
| Size | 165 x 92 x 92 (mm) |
| Weight | 360g |

Compatibility

This Wireless charging base is optimized to work with devices with Qi wireless charging technology. Magnetic Snap function compatible with iPhone 12 and later series.



LED INDICATOR

| | |
|-----------------------|---|
| LED On For 5 Seconds: | Connected to power supply |
| Breathing Light: | Charging |
| Blinking Light: | Abnormal charging/ foreign object detected |

IMPORTANT SAFETY INSTRUCTIONS

Please read all instructions and warnings prior to using this product. Improper use of this product may result in product damage, excess heat, toxic fumes, fire or explosion, for which damages you, Purchaser, and Manufacturer are responsible.

- Do not store device in high-temperature environment, including heat sources and intense sunlight. Do not place device close to fire or other excessively hot environments.
- Do not expose the wireless charging stand to humid environment, including rain or snow.
- Do not use the wireless charging stand in excess of its output rating. Overloading outputs above rating may result in a risk of fire or injury to persons
- Do not disassemble or modify this product
- Do not attempt to replace any part of this product
- All products have gone through a thorough quality assurance inspection. If your product is found excessively hot, is emitting odor, is deformed, abraded, cut, or is experiencing or demonstrating an abnormal phenomenon, immediately stop all product use and contact Manufacturer.
- To comply with FCC RF exposure compliance requirements, the wireless charging stand must be used with a separation distance of at least 20 cm from all persons
- Purchaser agrees to defend, indemnify, and hold Manufacturer harmless for any claims or damages arising from unintended use or misuse by a minor.
- The wireless charger will automatically switch off when disconnected from power supply, switch off the wireless charging stand when not in use.