

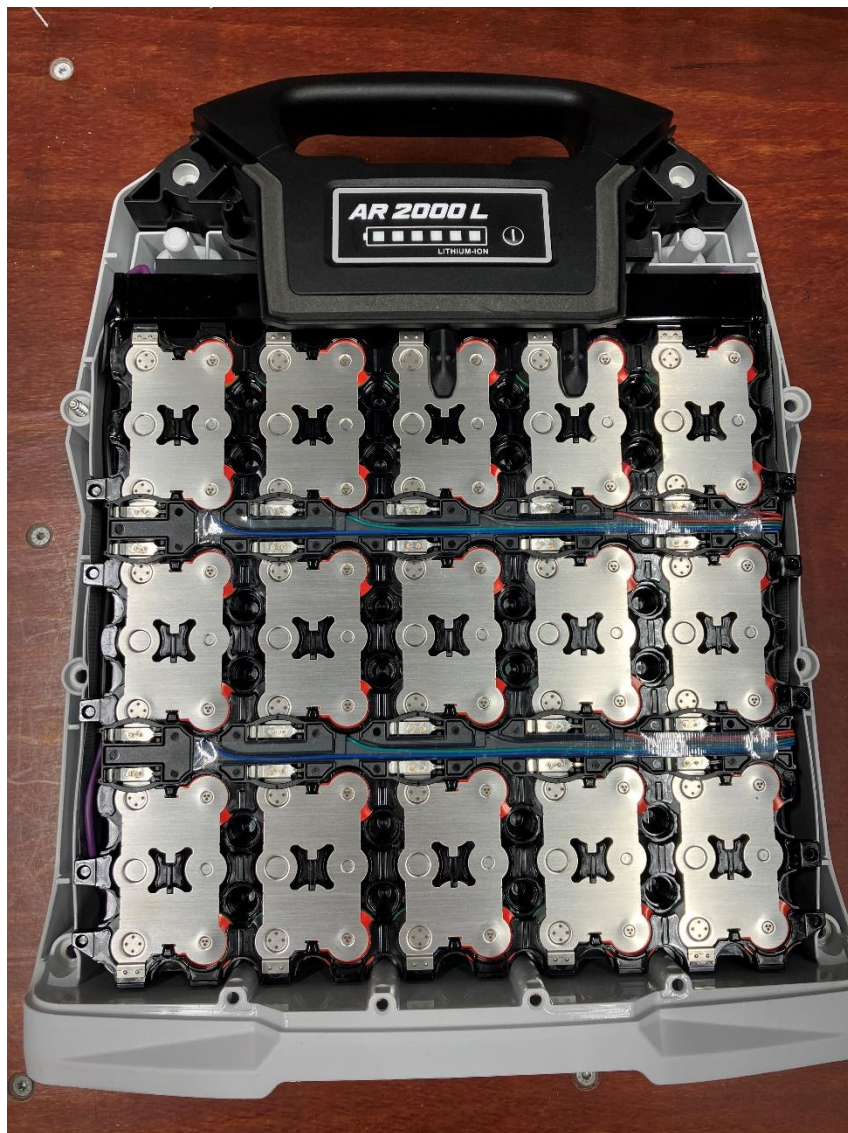
AR 2000 L: PHOTOS OF INSTALLATION OF THE CIRCUIT BOARD WITHIN THE BATTERY PACK LAYER BY LAYER

20th of September 2024

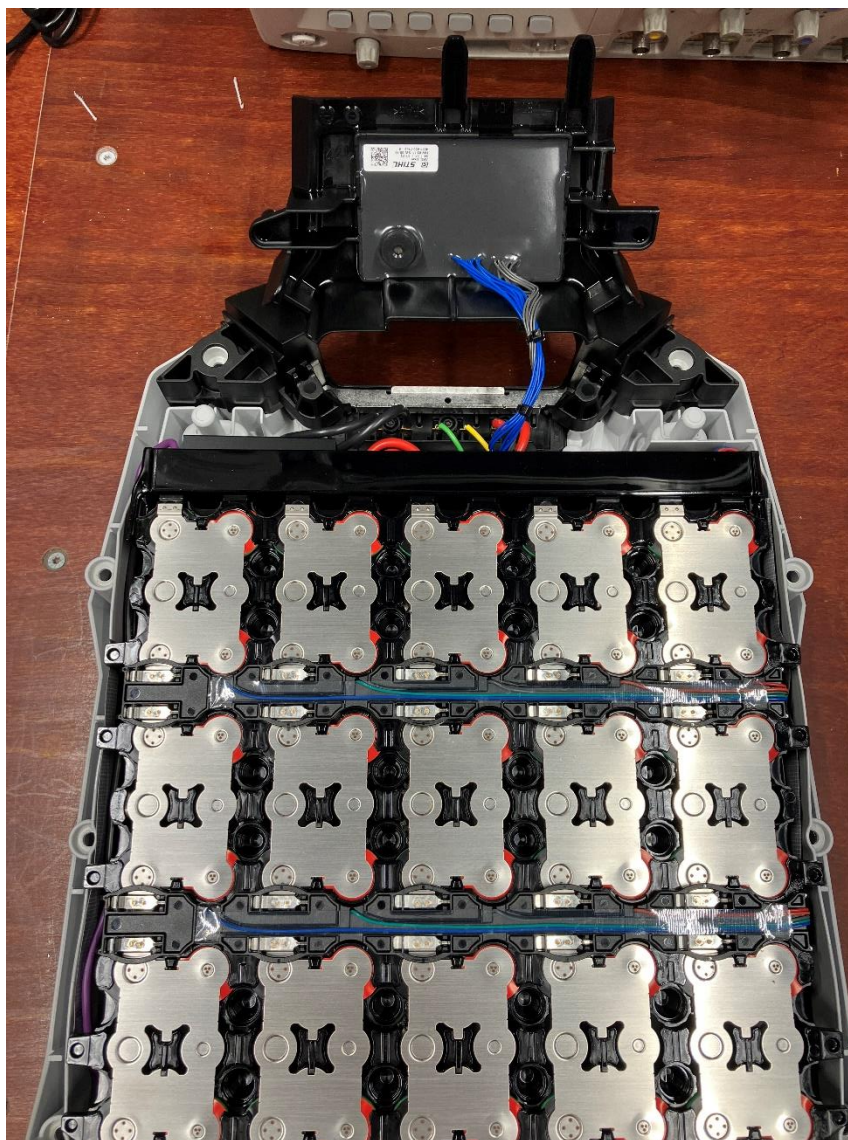
Complete battery pack:



Cover removed:



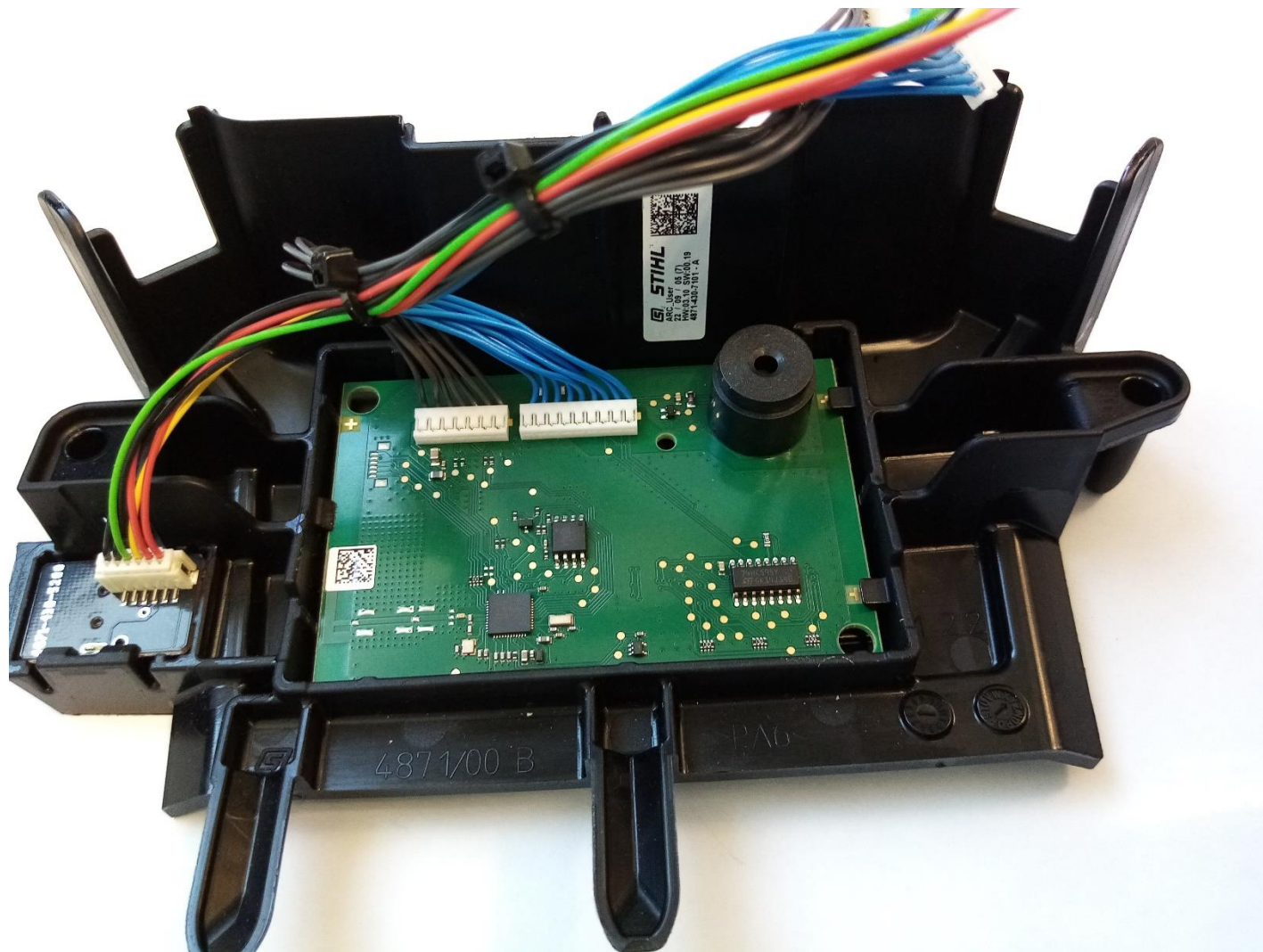
Electronics module tilted upwards



Electronic modul backside with potting



Without potting:



Detailed photos of the Circuit board:

No shield is being used.

All components are visible.

No components are covered by other components.

