

Measurement Report for Device, BACK, WLAN 2.4GHz, UID 10114 CAE, Channel 1 (2412.000MHz)

**Device under Test Properties**

Model, Manufacturer	Dimensions [mm]	IMEI	DUT Type
Device,	200.0 x 200.0 x 30.0		Other

**Exposure Conditions**

Phantom Section, TSL	Position, Test Distance [mm]	Band	Group, UID	Frequency [MHz], Channel Number	Conversion Factor	TSL Conductivity [S/m]	TSL Permittivity
Flat, HSL	BACK, 0.00	WLAN 2.4GHz	WLAN, 10114-CAE	2412.000, 1	7.98	1.81	42.1

**Hardware Setup**

Phantom	TSL, Measured Date	Probe, Calibration Date	DAE, Calibration Date
Twin-SAM V8.0 (30deg probe tilt) - xxxx	HBBL-600-10000 Charge:xxxx, 2024-Jun-12	EX3DV4 - SN7733, 2024-02-21	DAE4 Sn1739, 2024-01-23

**Scan Setup**

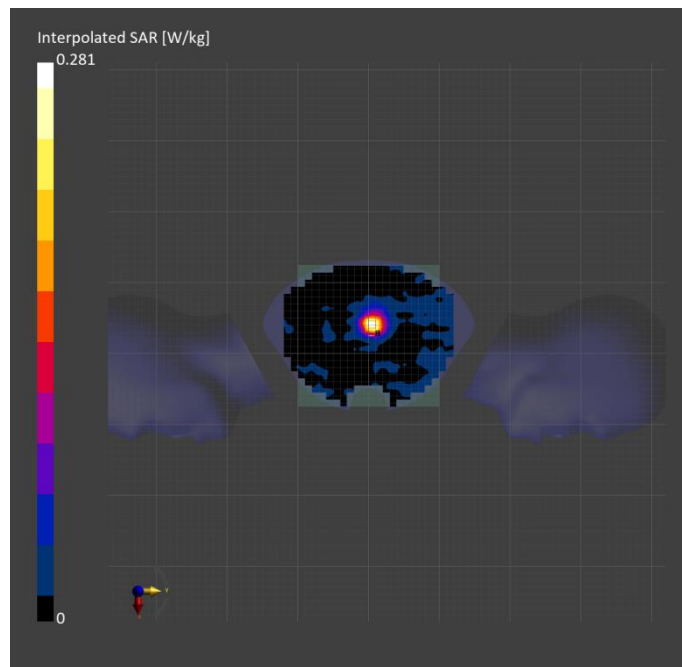
	Area Scan	Zoom Scan
Grid Extents [mm]	240.0 x 240.0	30.0 x 30.0 x 30.0
Grid Steps [mm]	10.0 x 10.0	5.0 x 5.0 x 1.5
Sensor Surface [mm]	3.0	1.4
Graded Grid	N/A	Yes
Grading Ratio	N/A	1.5
MAIA	Y	N/A
Surface Detection	VMS + 6p	VMS + 6p
Scan Method	Measured	Measured

**Measurement Results**

	Area Scan	Zoom Scan
Date	2024-06-12, 15:15	2024-06-12, 15:24
psSAR1g [W/kg]	0.152	0.156
psSAR10g [W/kg]	0.066	0.067
Power Drift [dB]	-0.01	-0.01
Power Scaling	Disabled	Disabled
Scaling Factor [dB]		
TSL Correction	No correction	No correction
M2/M1 [%]		78.1
Dist 3dB Peak [mm]		9.3

**Warning(s) / Error(s)**

Details	Area Scan	Zoom Scan
Warning(s)		
Error(s)		



Measurement Report for Device, BACK, U-NII-1, UID 10062 CAE, Channel 36 (5180.000MHz)

**Device under Test Properties**

Model, Manufacturer	Dimensions [mm]	IMEI	DUT Type
Device,	200.0 x 200.0 x 30.0		Other

**Exposure Conditions**

Phantom Section, TSL	Position, Test Distance [mm]	Band	Group, UID	Frequency [MHz], Channel Number	Conversion Factor	TSL Conductivity [S/m]	TSL Permittivity
Flat, HSL	BACK, 0.00	U-NII-1, U-NII-2A	WLAN, 10062-CAE	5180.000, 36	5.64	4.54	35.4

**Hardware Setup**

Phantom	TSL, Measured Date	Probe, Calibration Date	DAE, Calibration Date
Twin-SAM V8.0 (30deg probe tilt) - xxxx	HBBL-600-10000 Charge:xxxx, 2024-Jun-12	EX3DV4 - SN7733, 2024-02-21	DAE4 Sn1739, 2024-01-23

**Scan Setup**

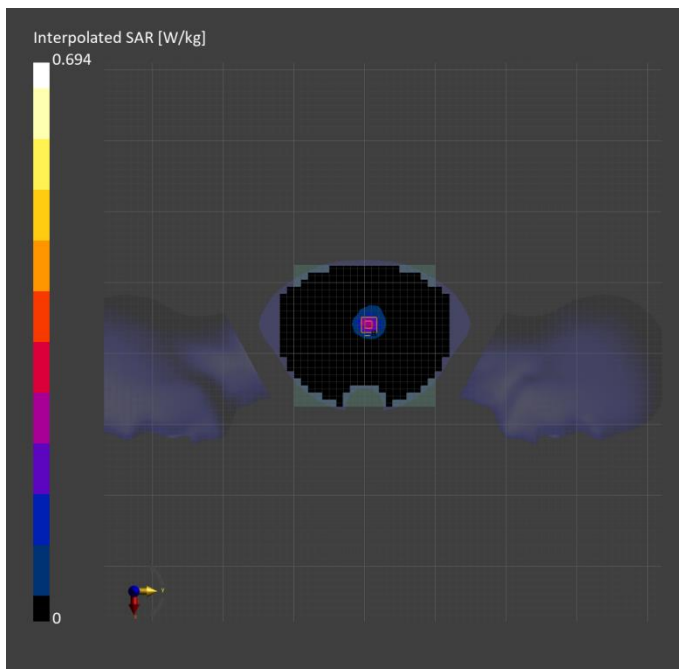
	Area Scan	Zoom Scan
Grid Extents [mm]	240.0 x 240.0	22.0 x 22.0 x 22.0
Grid Steps [mm]	10.0 x 10.0	4.0 x 4.0 x 1.4
Sensor Surface [mm]	3.0	1.4
Graded Grid	N/A	Yes
Grading Ratio	N/A	1.4
MAIA	Y	Y
Surface Detection	VMS + 6p	VMS + 6p
Scan Method	Measured	Measured

**Measurement Results**

	Area Scan	Zoom Scan
Date	2024-06-12, 16:10	2024-06-12, 16:19
psSAR1g [W/kg]	0.209	0.219
psSAR10g [W/kg]	0.083	0.087
Power Drift [dB]	-0.11	-0.08
Power Scaling	Disabled	Disabled
Scaling Factor [dB]		
TSL Correction	No correction	No correction
M2/M1 [%]		67.5
Dist 3dB Peak [mm]		9.7

**Warning(s) / Error(s)**

Details	Area Scan	Zoom Scan
Warning(s)		
Error(s)		



Measurement Report for Device, BACK, U-NII-3, UID 10062 CAE, Channel 165 (5825.000MHz)

**Device under Test Properties**

Model, Manufacturer	Dimensions [mm]	IMEI	DUT Type
Device,	200.0 x 200.0 x 30.0		Other

**Exposure Conditions**

Phantom Section, TSL	Position, Test Distance [mm]	Band	Group, UID	Frequency [MHz], Channel Number	Conversion Factor	TSL Conductivity [S/m]	TSL Permittivity
Flat, HSL	BACK, 0.00	U-NII-2C, U-NII-3	WLAN, 10062-CAE	5825.000, 165	5.05	5.34	35.9

**Hardware Setup**

Phantom	TSL, Measured Date	Probe, Calibration Date	DAE, Calibration Date
Twin-SAM V8.0 (30deg probe tilt) - xxxx	HBBL-600-10000 Charge:xxxx, 2024-Jun-12	EX3DV4 - SN7733, 2024-02-21	DAE4 Sn1739, 2024-01-23

**Scan Setup**

	Area Scan	Zoom Scan
Grid Extents [mm]	240.0 x 240.0	22.0 x 22.0 x 22.0
Grid Steps [mm]	10.0 x 10.0	4.0 x 4.0 x 1.4
Sensor Surface [mm]	3.0	1.4
Graded Grid	N/A	Yes
Grading Ratio	N/A	1.4
MAIA	Y	Y
Surface Detection	VMS + 6p	VMS + 6p
Scan Method	Measured	Measured

**Measurement Results**

	Area Scan	Zoom Scan
Date	2024-06-12, 16:36	2024-06-12, 16:44
psSAR1g [W/kg]	0.607	0.615
psSAR10g [W/kg]	0.231	0.226
Power Drift [dB]	0.04	0.15
Power Scaling	Disabled	Disabled
Scaling Factor [dB]		
TSL Correction	No correction	No correction
M2/M1 [%]		58.3
Dist 3dB Peak [mm]		10.8

**Warning(s) / Error(s)**

Details	Area Scan	Zoom Scan
Warning(s)		
Error(s)		

