

UTX-M03 Internal Structure [1]



Detached the Microphone Capsule.



Detached Board AU-359.

UTX-M03 Internal Structure [2]



Detached the Bottom Grip.



Detached the Antenna from Board TX-149.

UTX-M03 Internal Structure [3]

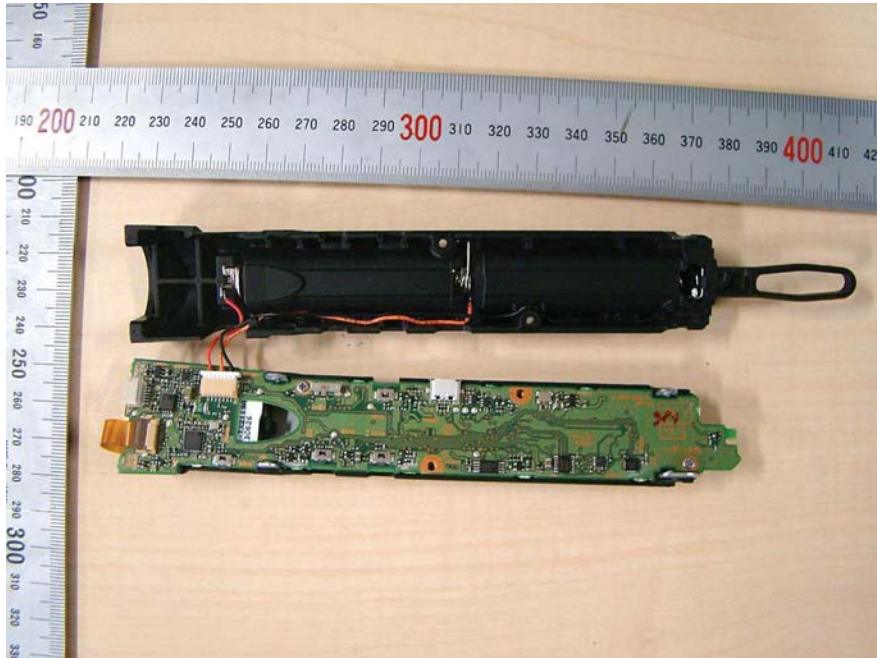


Detached the Bottom Screw from the frame.



Detached the Upper Grip.

UTX-M03 Internal Structure [4]

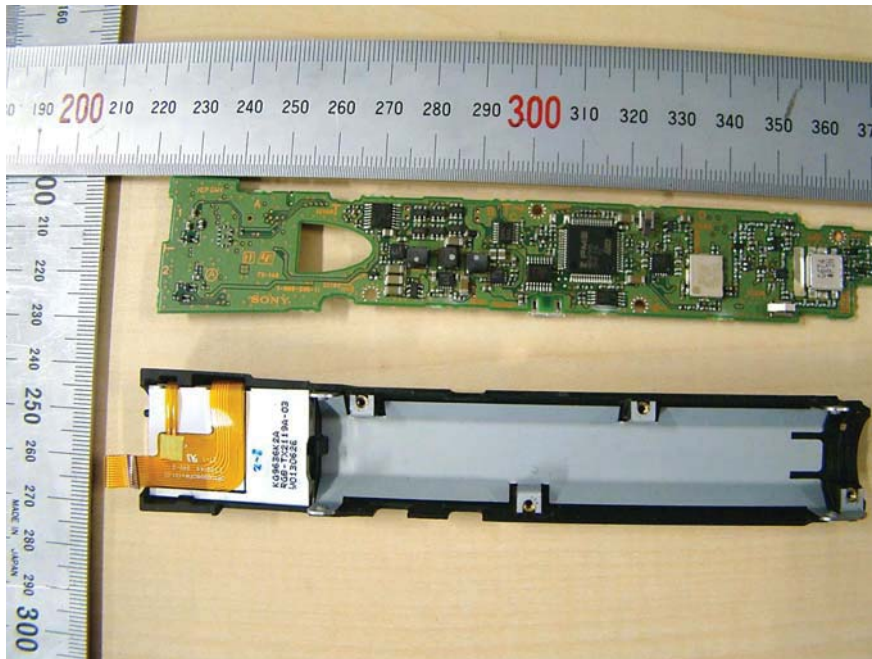


Detached the Battery Frame.



Opposite side.

UTX-M03 Internal Structure [5]

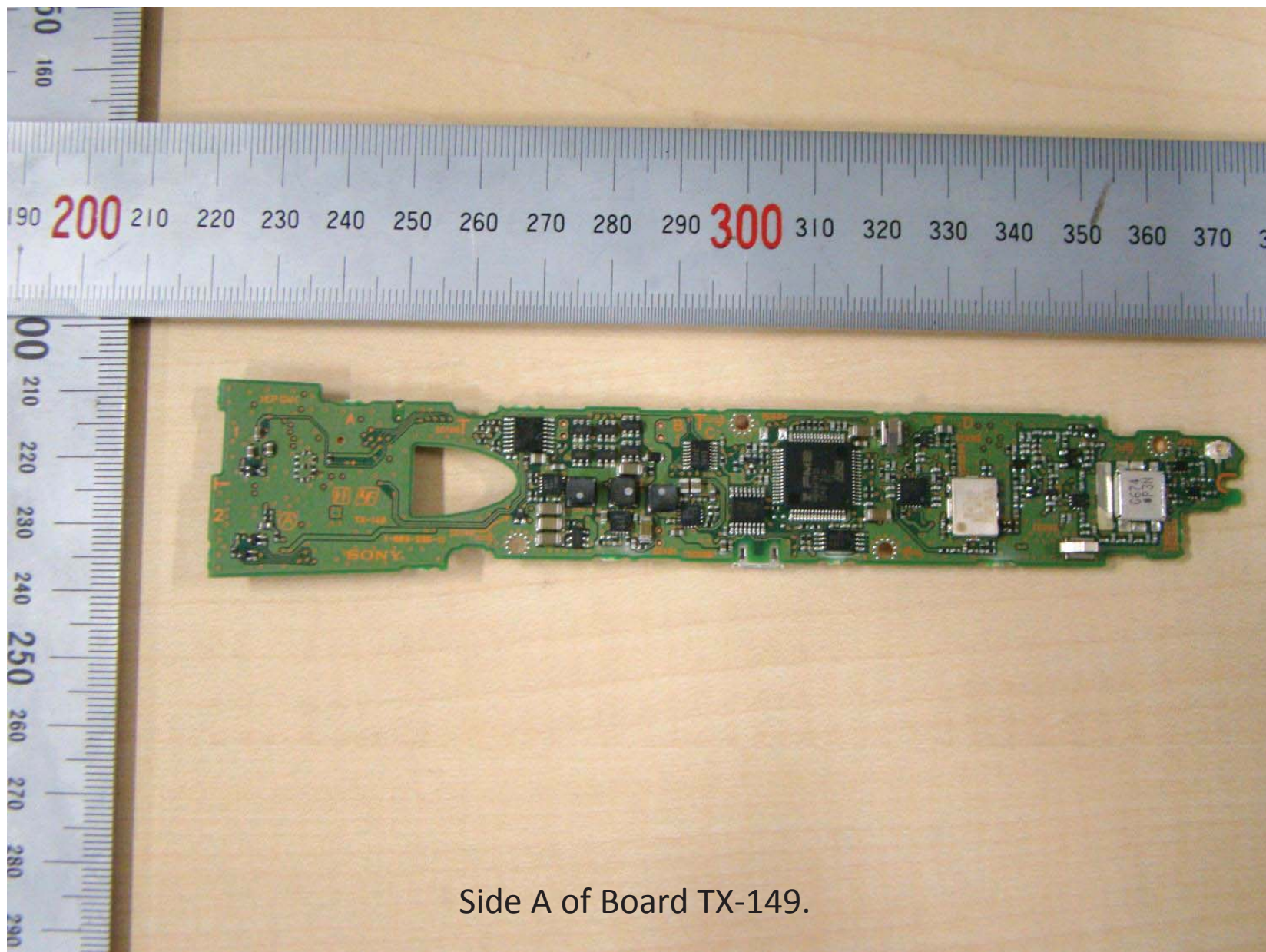


Detached the Cover Frame.



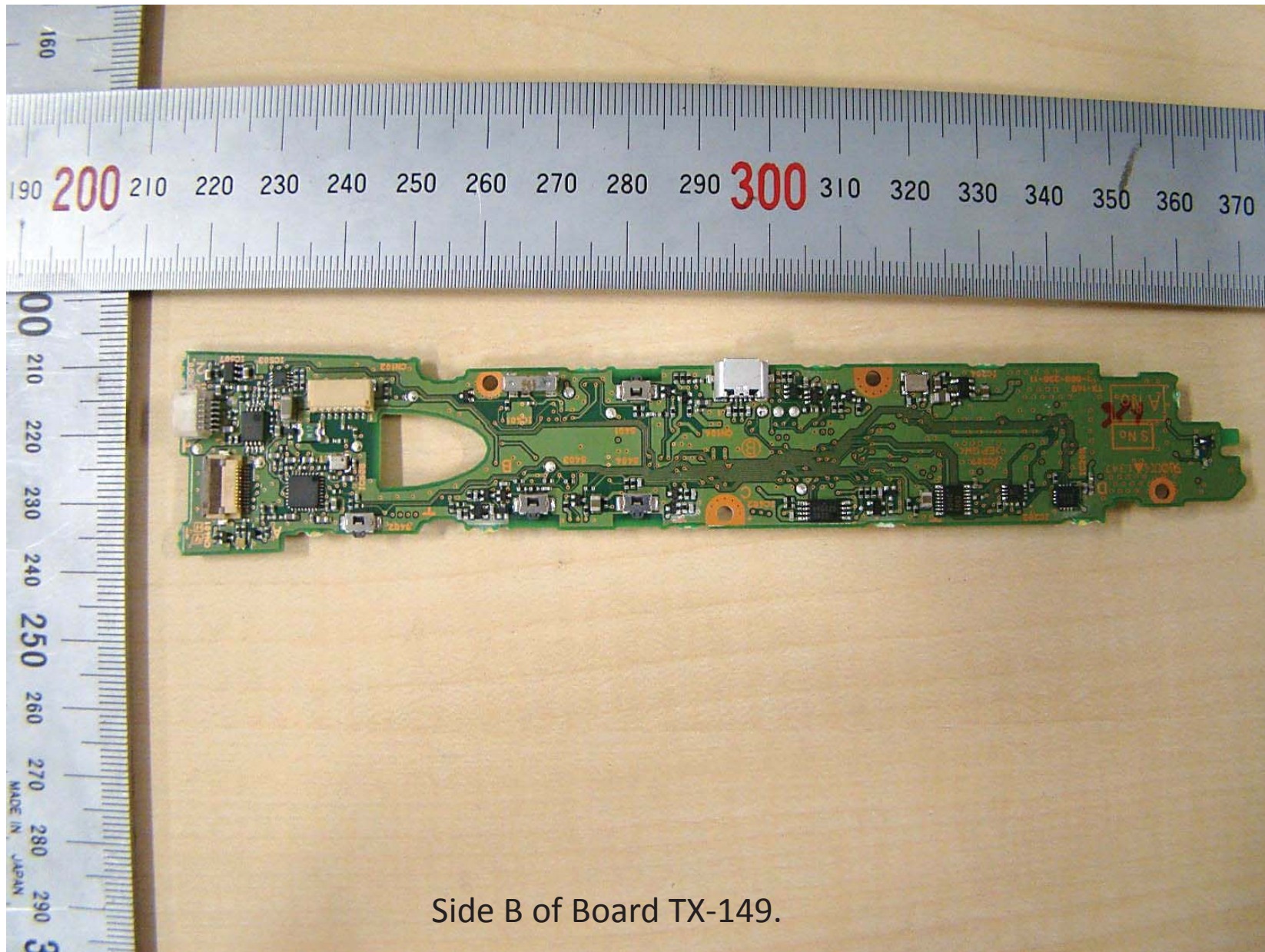
Opposite side.

UTX-M03 Internal Structure [6]



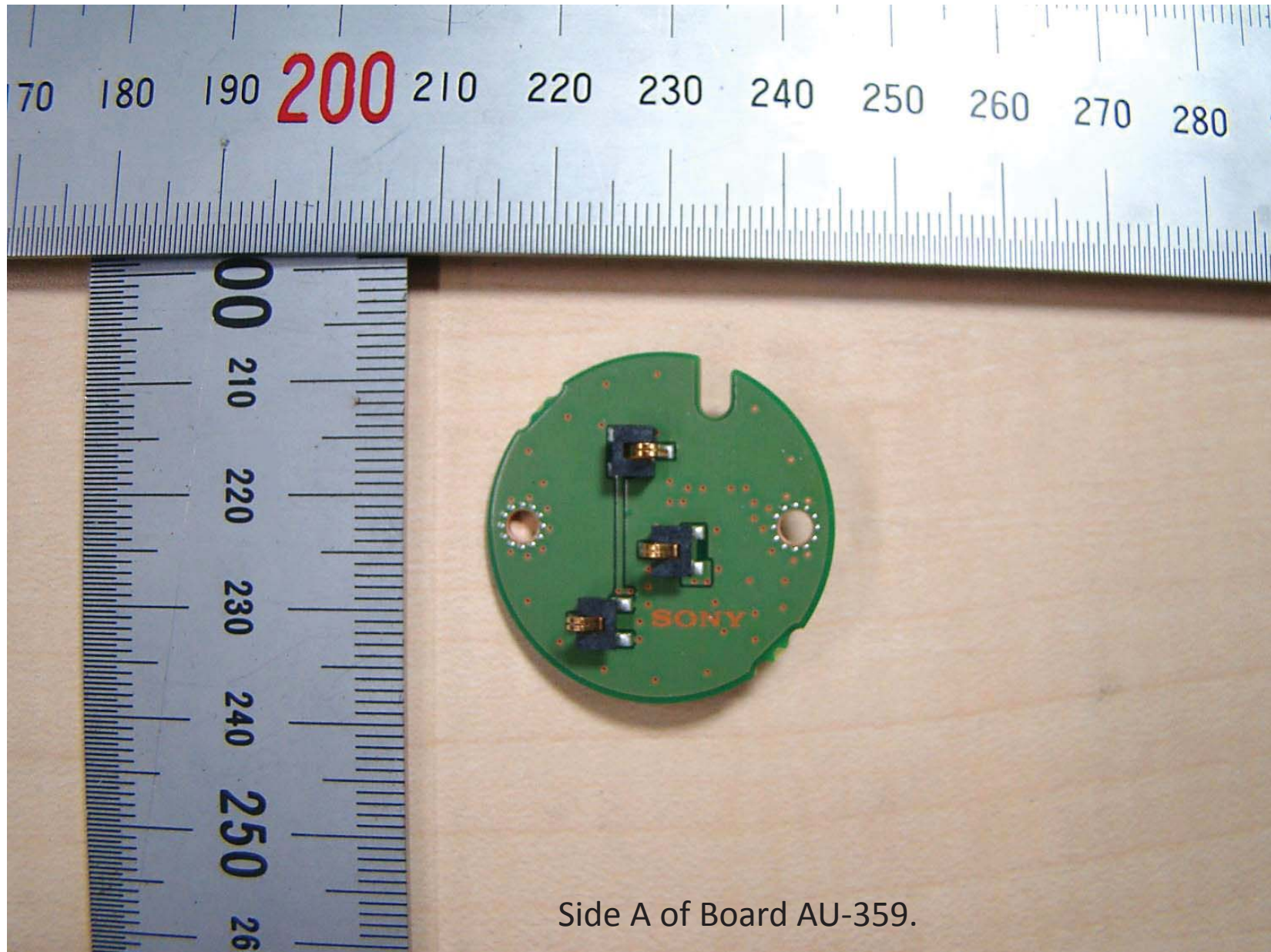
Side A of Board TX-149.

UTX-M03 Internal Structure [7]



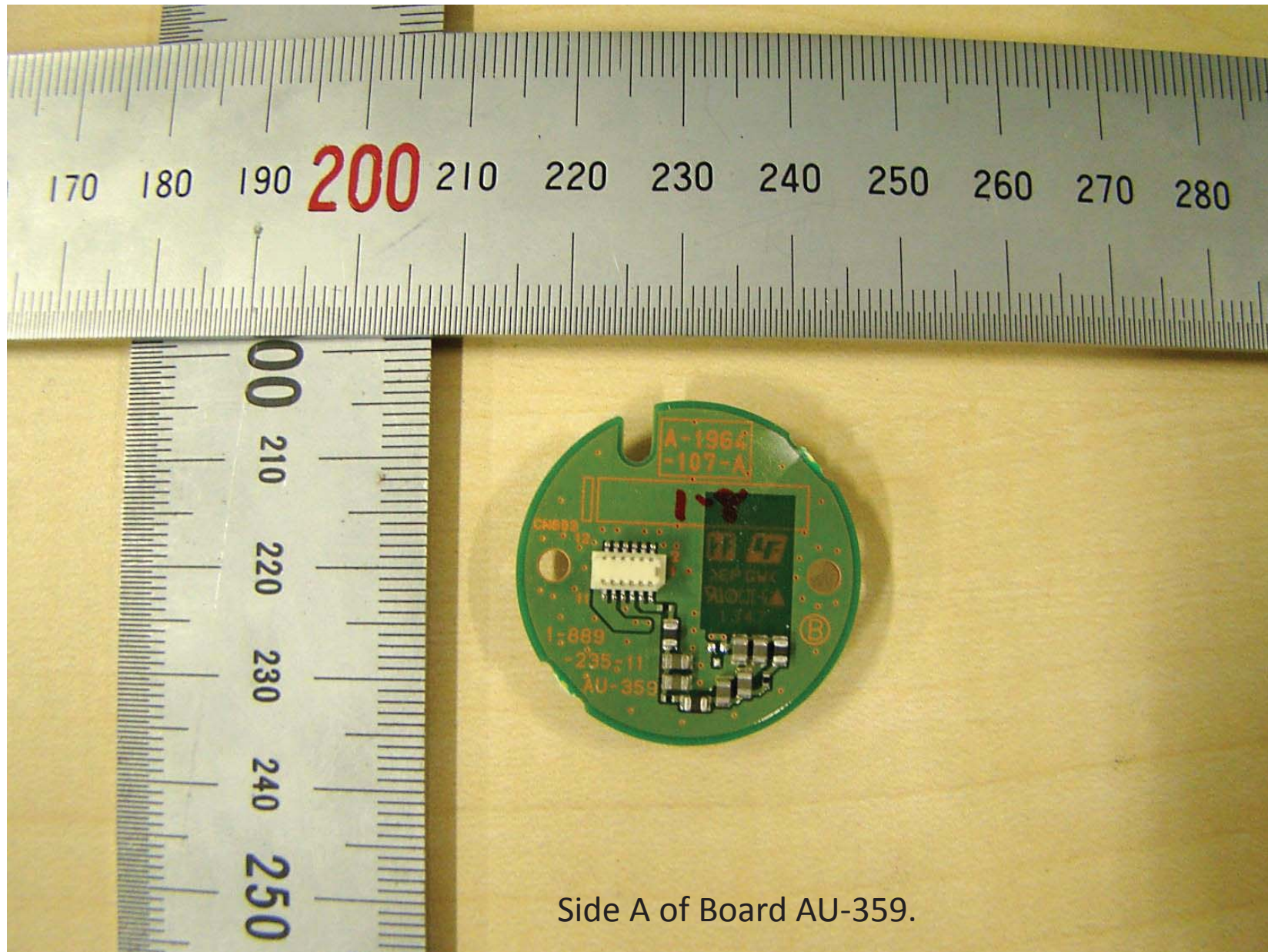
Side B of Board TX-149.

UTX-M03 Internal Structure [8]



Side A of Board AU-359.

UTX-M03 Internal Structure [8]



Side A of Board AU-359.