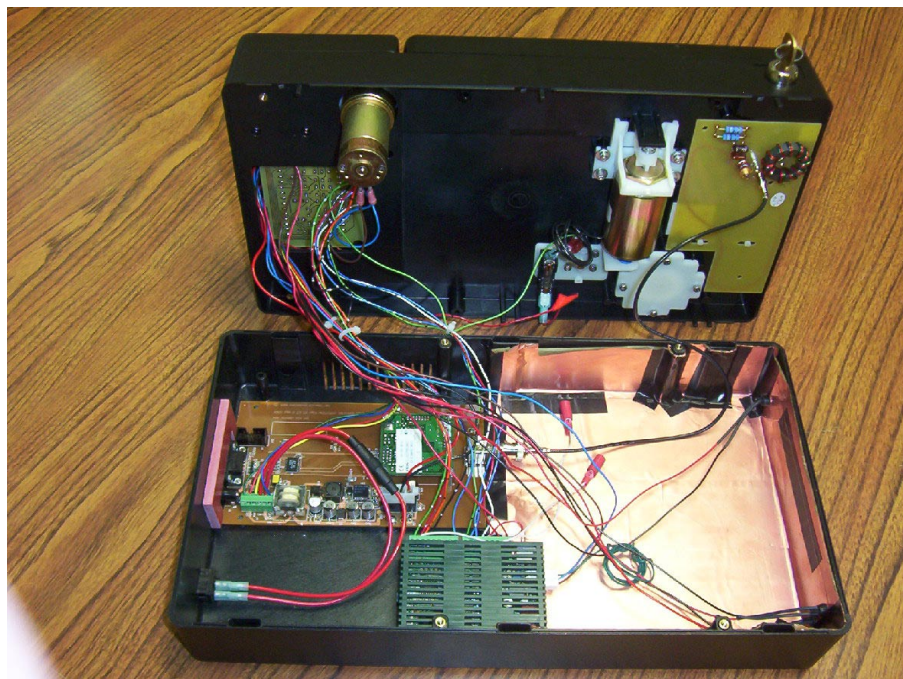


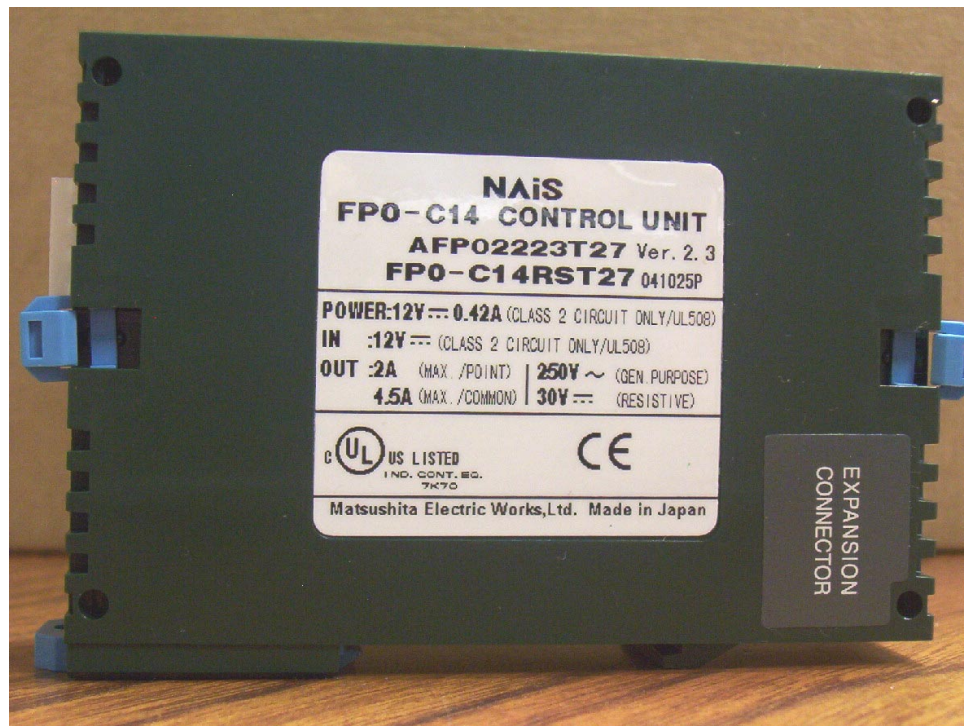


**Top cover unlocked and opened**

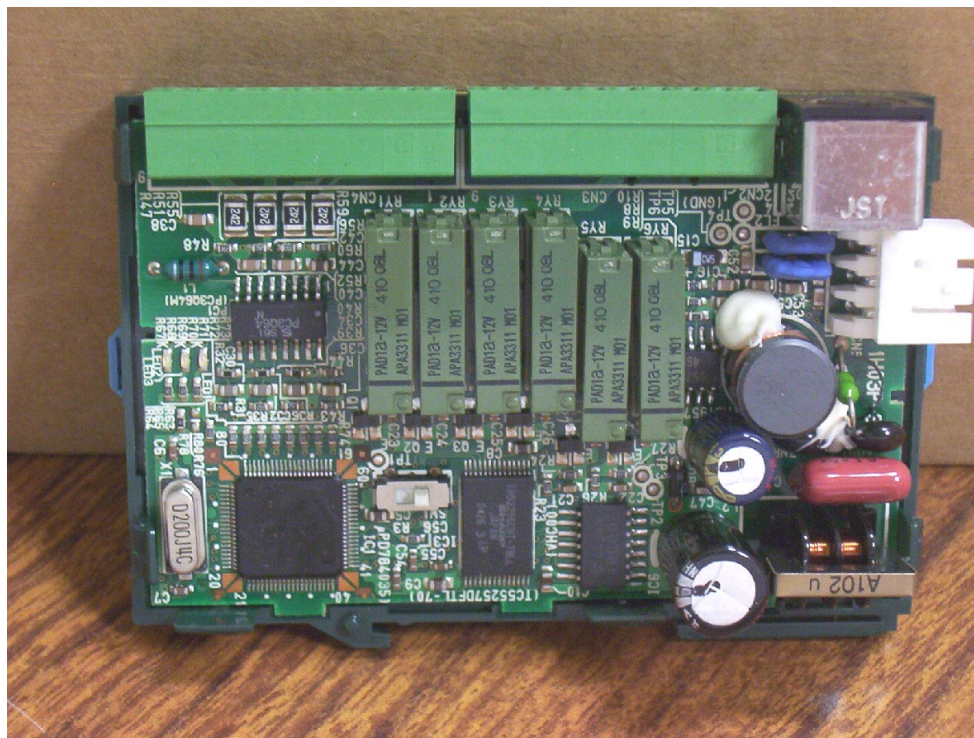


**Internal wiring and component placement**



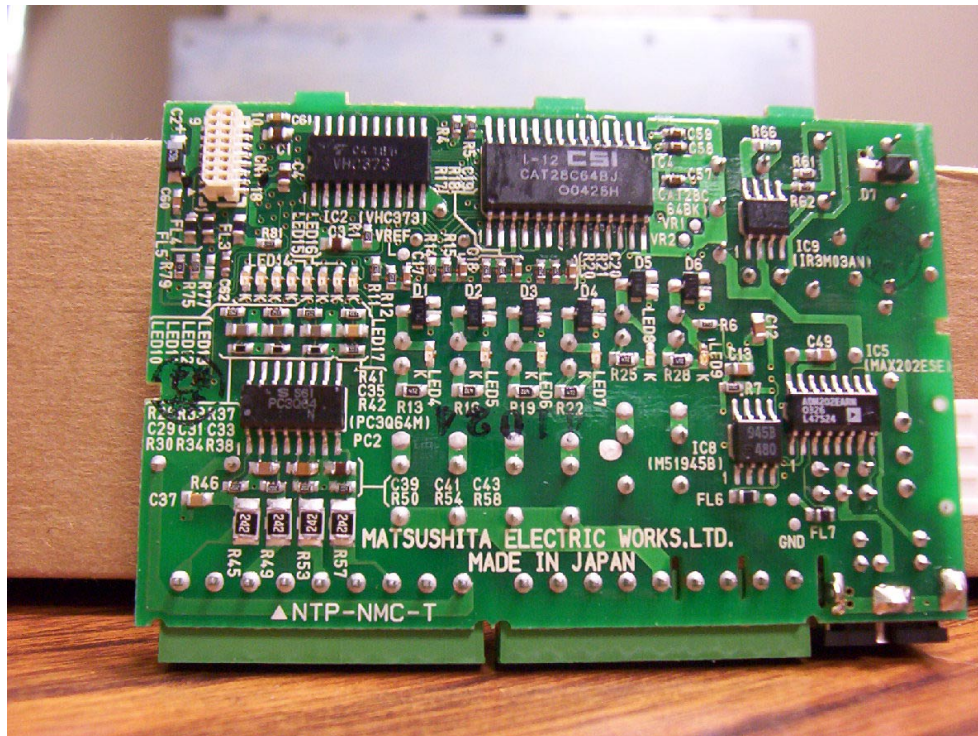


Control Unit Module

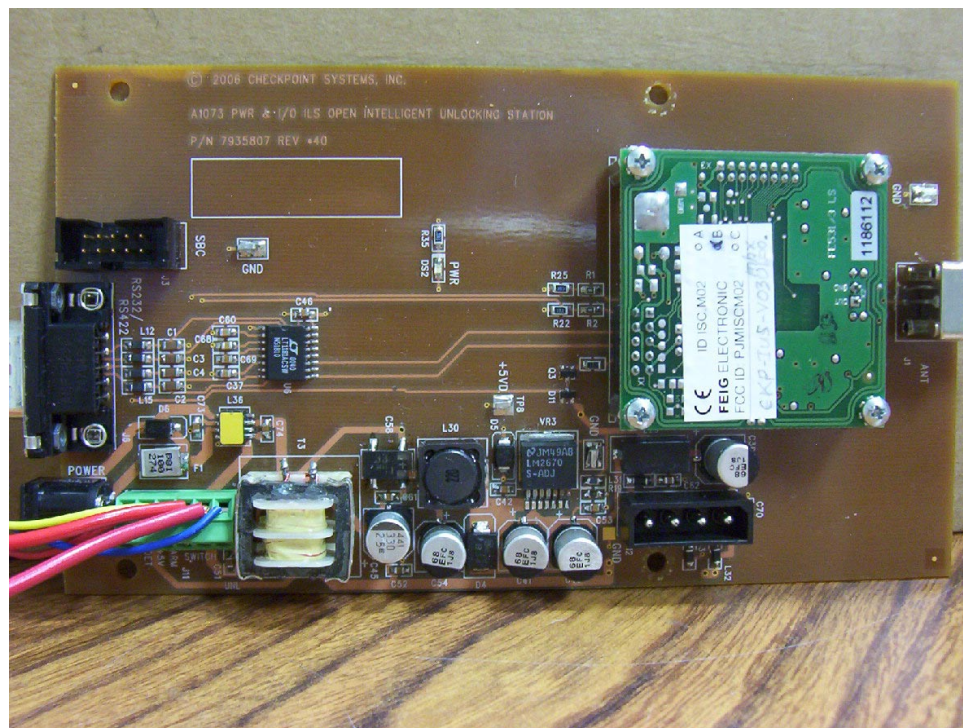


Control Unit PCB (Top)



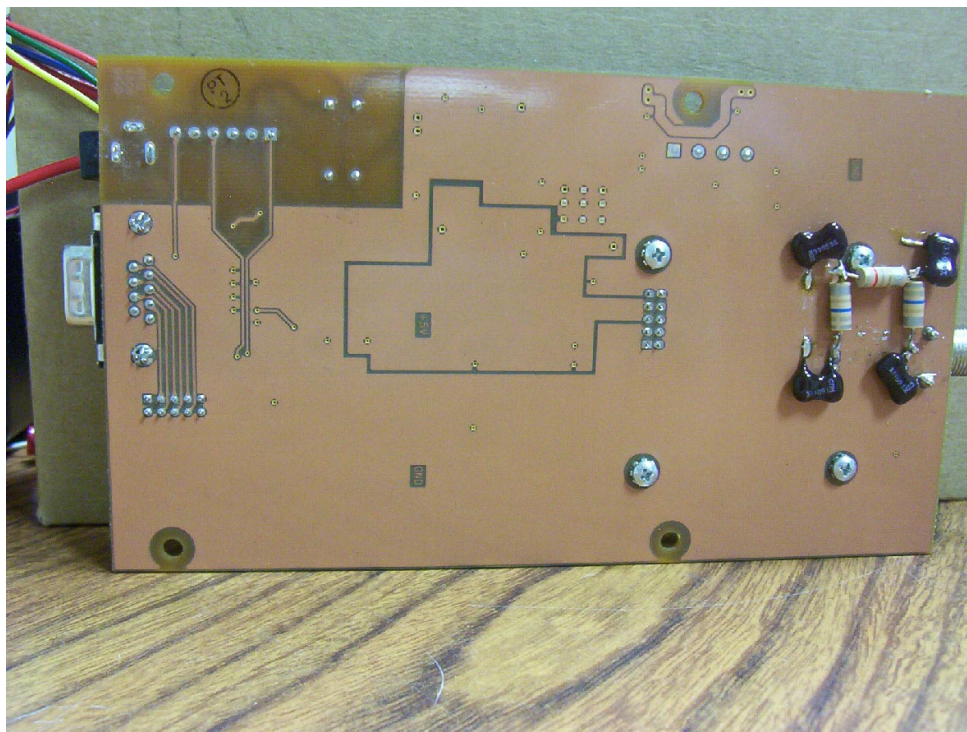


**Control Unit PCB (Bottom)**

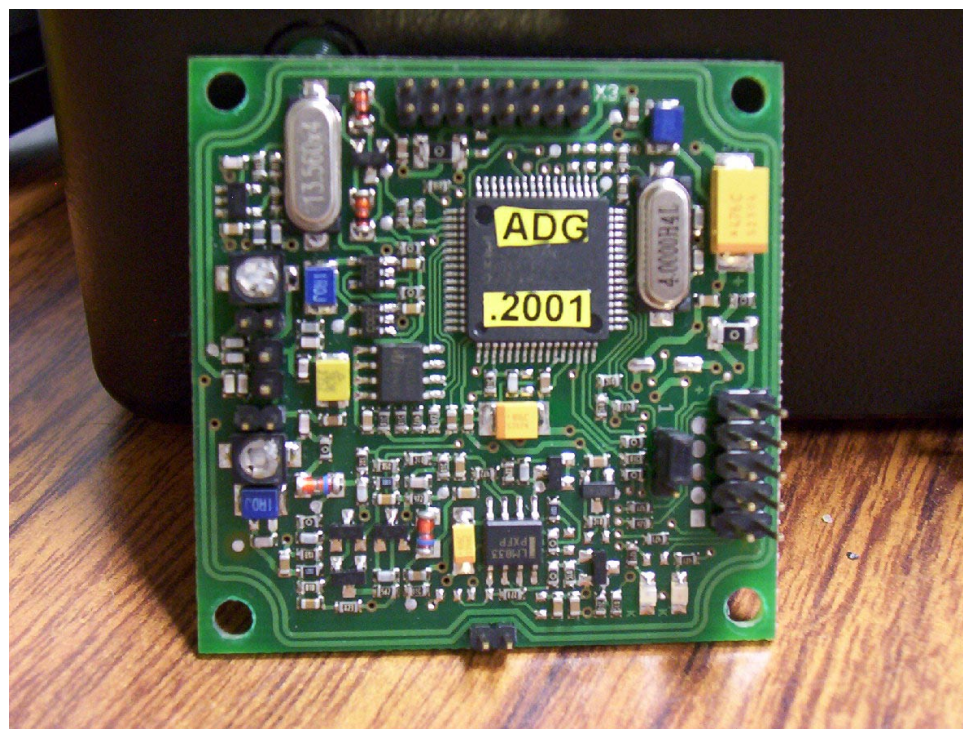


**A1073 Power, I/O and Transmitter PCB (Top)**





**A1073 Power, I/O, Transmitter PCB (Bottom)**

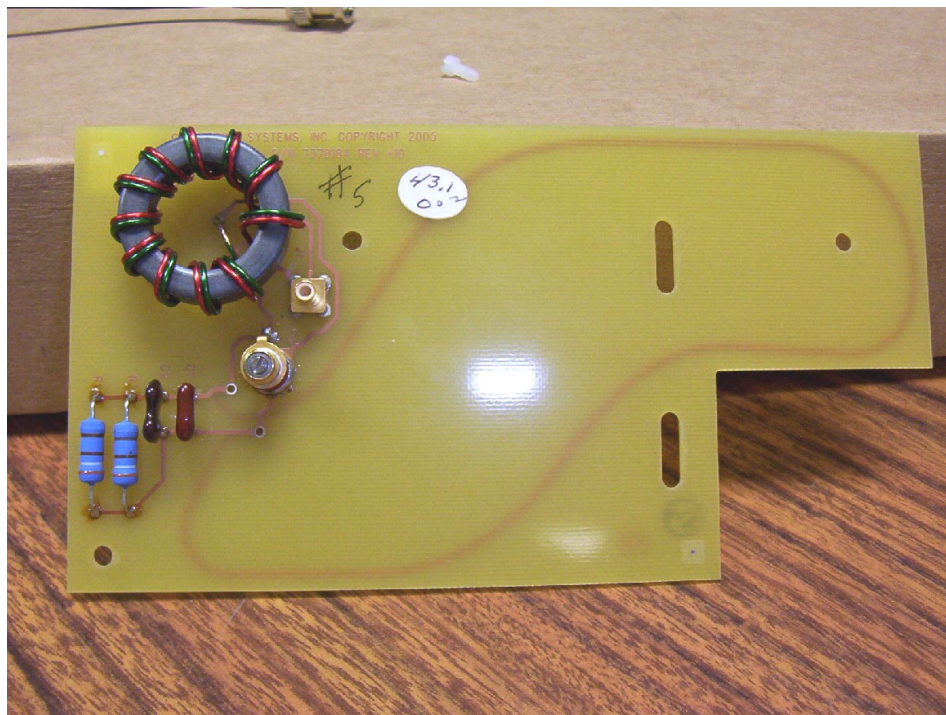


**FEIG Transmitter PCB (Component side)**

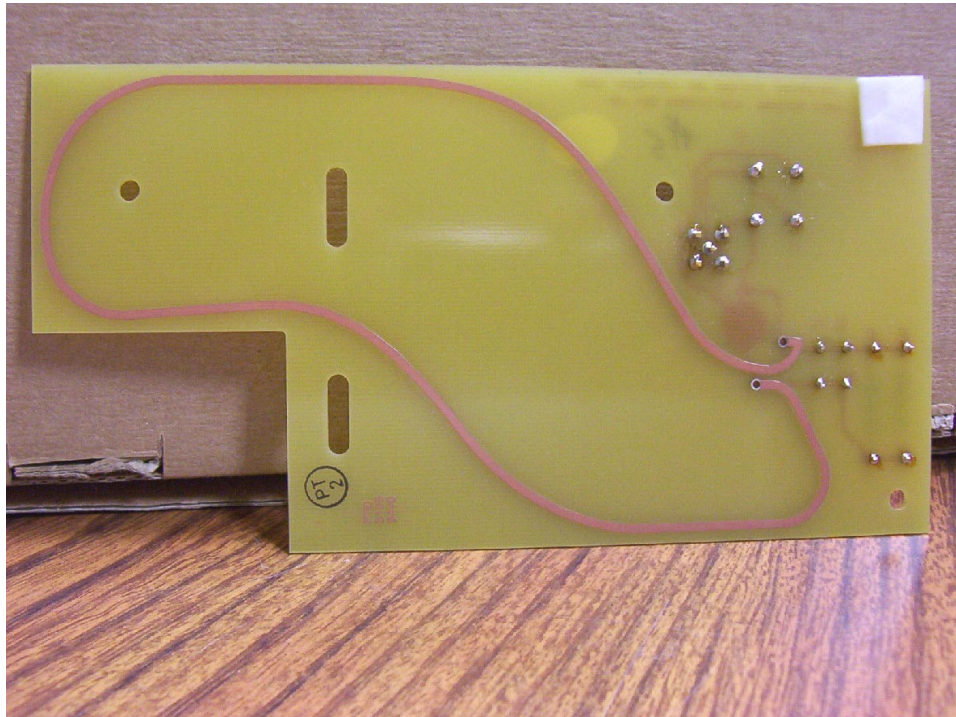




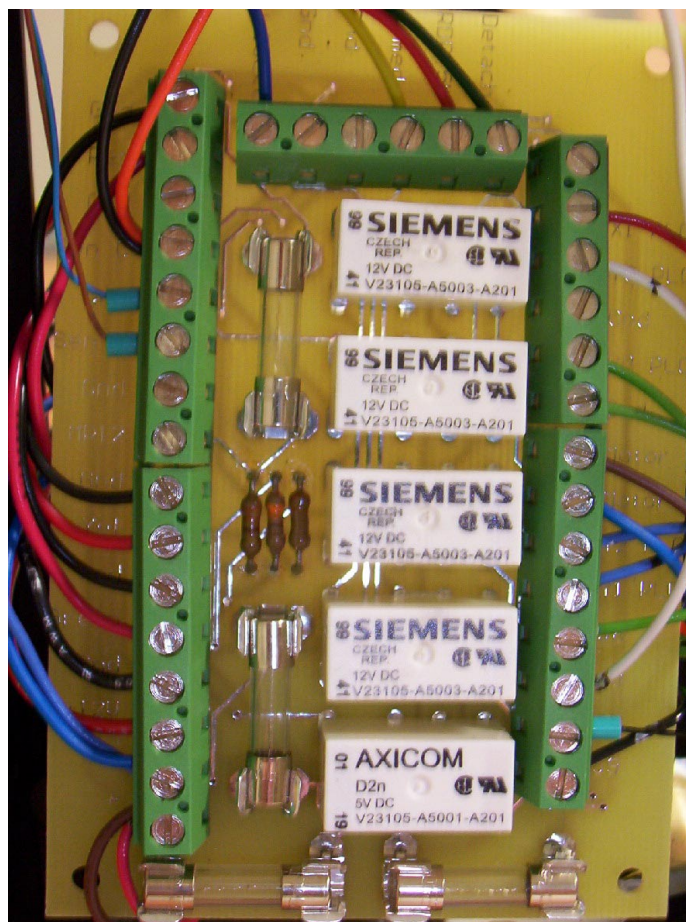
**FEIG Transmitter PCB (Solder Side)**



**A1071 Antenna PCB (Component side)**

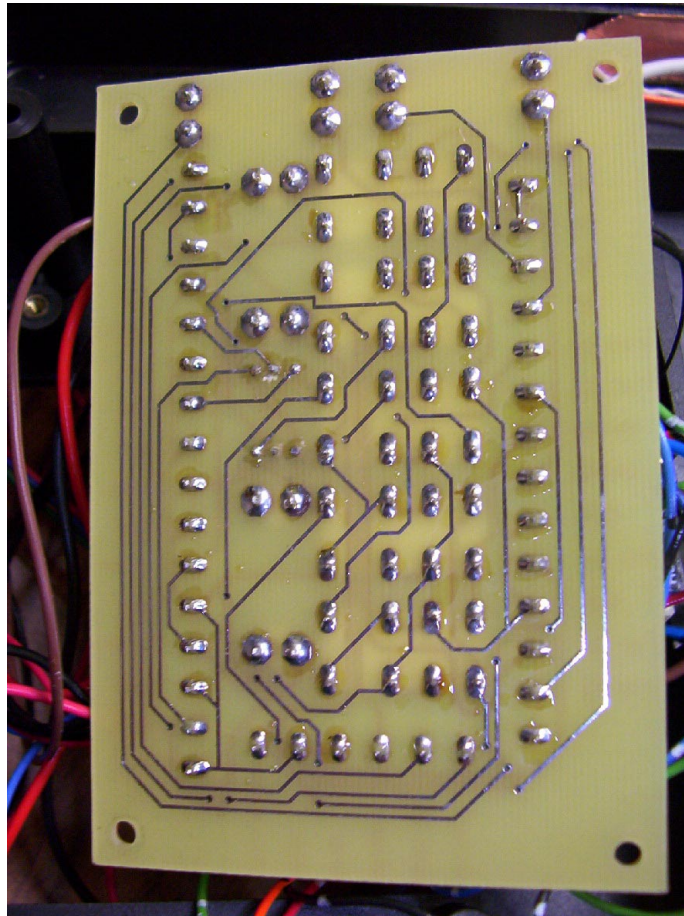


**A1071 Antenna PCB (Solder side)**



**Voltage Regulator PCB (Component Side)**





**Voltage Regulator PCB (Solder side)**