

Quick Start Guide

Overview

Sensor



- ① Solar Panel
- ② Sensor Eye
- ③ Mounting Plate
- ④ ON/OFF Button
- ⑤ Indicator Switch
- ⑥ Charge Port
- ⑦ Setting The Sensitivity Of The Sensor
- ⑧ Ball-Joint Adjustment Screw(on the back)

Receiver



ON/OFF
TONES SETTING
PAIRED
RESET
VOLUME SETTING



Wall Mount Hole

Battery Cap

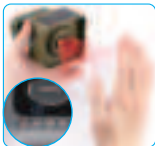
Quick Getting Started

The sensor will arrive pre-configured to a default pairing setting if you buy the sensor and receiver together. You will only need to reset the pairing if you want to change to a different setting, or if you purchased only the sensor without the receiver to expand it. How to pair, please check the detailed manual part 3.2 PAIRED.

If you buy set (include sensor and receiver) directly, you can use it easily:



Step 1: Charge the sensor. The sensor can continue to work up to 12 months after it has been fully charged. However, sensors are only charged to about 20% power when they leave our factory, so you will need to charge it before installing.



Step 2: Test the connection. After opening the sensor and setting the sensitivity level, wave your hands slowly in front of the sensor. At this time, the sensor will detect the movement of your hands. A red light will illuminate and the receiver will ring to indicate pairing success.



Step 3: Install the sensor (test before installing). Use the included screwdriver for installation. You can adjust the angle of the sensor eye with the ball joint after installation.

Best Customer Service

This ChtooCY Solar wireless driveway alarm is a multifunctional technological product, and so some customers will experience some difficulty in using it. Please feel free to contact us if you encounter any problems with your system. We are dedicated to providing 100% quality service for our customers.

Please attached order ID and the detailed information about the issue (the pictures or video is perfect and helpful).



Customer service Email: support@chtoocy.com
Facebook page: @ChtooCY
Website: www.chtoocy.com

We will reply to you within 12 business hours.

FCC Statement

This equipment has been tested and found to comply with the limits for a Class B digital device, pursuant to Part 15 of the FCC Rules. These limits are designed to provide reasonable protection against harmful interference in a residential installation. This equipment generates uses and can radiate radio frequency energy and, if not installed and used in accordance with the instructions, may cause harmful interference to radio communications. However, there is no guarantee that interference will not occur in a particular installation. If this equipment does cause harmful interference to radio or television reception, which can be determined by turning the equipment off and on, the user is encouraged to try to correct the interference by one or more of the following measures:

- Reorient or relocate the receiving antenna.
- Increase the separation between the equipment and receiver.
- Connect the equipment into an outlet on a circuit different from that to which the receiver is connected.
- Consult the dealer or an experienced radio/TV technician for help.

This device complies with part 15 of the FCC Rules. Operation is subject to the following two conditions:

(1) This device may not cause harmful interference, and (2) this device must accept any interference received, including interference that may cause undesired operation.

Changes or modifications not expressly approved by the party responsible for compliance could void the user's authority to operate the equipment.