

Model No.CP80

U S E R G U I D E

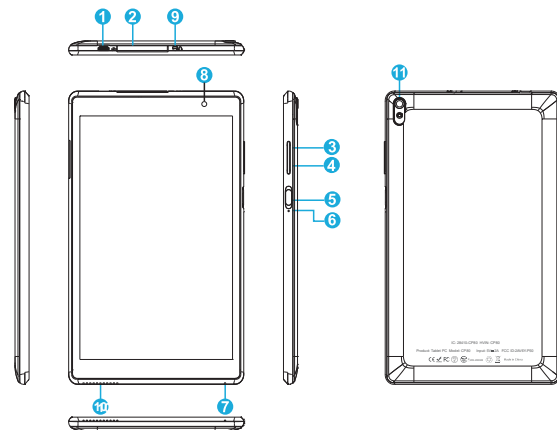
Please read this instruction thoroughly before using this product and keep it for future reference.

ENGLISH



* Google, Android, Google Play and other marks are trademarks of Google LLC.

FUNCTION OVERVIEW



- | | | |
|---------------------|------------------------|-------------------|
| 1. Type-C | 5. Power On/Off | 9. Headphone Jack |
| 2. Memory Card Slot | 6. Reset | 10. Speakers |
| 3. Volume + | 7. Microphone | 11. Rear Camera |
| 4. Volume - | 8. Front-facing Camera | |

GETTING STARTED



Power On/Off

- * Press and hold the power button for 2~3s to turn on your tablet. Select your language and set up your tablet following the start guide.
- * Press and hold the power button for 2s, then release it. It will show **Power off**, **Restart** and **Screenshot** on the screen. Tap **Power off** to turn off the tablet.
- * Press and hold the power button for 10s to do a forced reboot when it's frozen.

Battery

- *A rechargeable Li-ion battery is installed in the tablet.
- *DO NOT attempt to replace the tablet battery by yourself because you may damage the battery, which might cause overheating, fire or injury.
- *DO NOT dispose of tablet in a fire.
- *DO NOT expose the tablet battery to any heat source, direct sunlight or high temperature.
- *Only use the ORIGINAL power adapter provided by us to charge the tablet battery.
- *We suggest you drain the battery completely once a month if only use your tablet occasionally.
- *The Li-ion battery in your tablet should be serviced or recycled by an authorized service provider, and must be recycled or disposed of separately from household waste.
- *Dispose of battery according to your local environmental laws and regulations.

Sleep Mode

Simply press the power button once to switch the tablet to the **Sleep Mode** when the tablet is **ON**; press again to wake it up.



Tip:

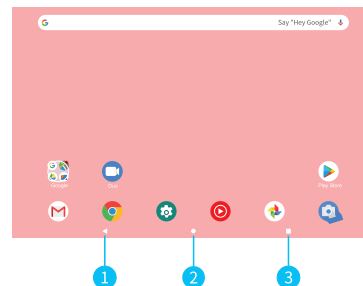
Go to **Settings > Display > Sleep** to set the time of entering the **Sleep Mode**.

Screenshot

- * Press the **Volume-** button and the **Power On/Off** button for 2 seconds to capture a picture.
- * Press and hold the power button for 2s, then release it. It will show **Power off, Restart** and **Screenshot** on the screen. Tap **Screenshot** to capture a screenshot.

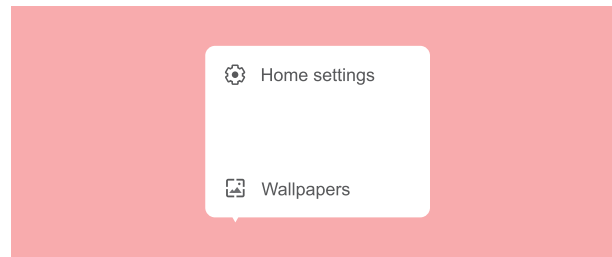
HOME SCREEN

Icons on the Bottom Menu



- 1.Back
- 2.Home Screen
- 3.Recent Activities

Home Settings, Widgets and Wallpapers



Tap and hold the empty section of a Home Screen, **Home Settings**, **Wallpapers** will be displayed.

- 1 Tap **Home Settings** to start customizing your Home Screen.
- **Show Google App:**
Show Google Apps when you swipe leftward on the main Home Screen.

- **Add icon to Home Screen:**
Allow the new Apps installed from **Play Store** to be displayed on the Home Screen.
- **Notificaton dots:**
Show/hide the small circular dots that sit on the upper right corner of your App icons.
- **Home Screen loop:**
Enable it to allow continuous Home Screens swiping/sliding.
- **Pull down action:**
Select the action when you swipe downward on the Home Screen.
- **Dynamic icon:**
Enable to dynamically change the date of **Calendar** and the time of the **Clock**.
- **Home screen style:**
Select the option from **Single layer** and **Dual layer**. You can access all the apps by sliding leftward/rightward if you select **Single layer**; while access all the apps by swiping upward/downward if you select **Dual layer**.
- **Desktop grid:**
Set the number of **Rows** and **Columns** for displaying Apps on the Home Screens.
- ② Tap **Wallpapers** to change the current wallpaper of the tablet from the default wallpapers or your photos.

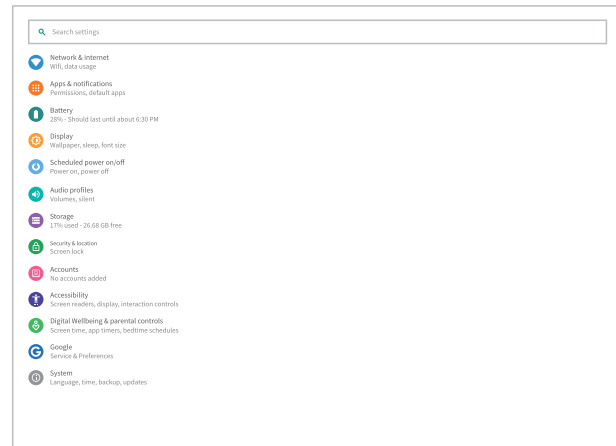
SETTING BASICS

Quick Settings

Swipe down from the top of the screen to access **Quick Settings**.

More Settings

Go to **Quick Settings**, then tap the  icon to enter the detailed setting interface.
Or, tap **Settings** App on the Home screen to enter.



Network & internet

- * Connect to any working Wifi
- * Monitor the data usage
- * Enable/disable the **Airplane Mode**
- * Add VPN connections

Apps & notifications

- * Check the Apps recently opened
- * Check all the Apps on the tablet
- * Check the screen time for Apps

- * Adjust App notification settings
- * Set the App permissions
- * Uninstall the third-party Apps
- * Clear the cache of the Apps and more

Battery

- * Display the remaining battery power as a percentage
- * Enable/disable **Battery percentage** and **Battery Manager**
- * Set **Power saving optimization**
- * Manage the battery optimization for apps
- * Check the detailed battery settings for Apps

Display

- * Adjust the screen brightness
- * Adjust the font size and display size
- * Set a screen saver
- * Change the wallpaper
- * Adjust the time of entering the **Sleep Mode** and more

Scheduled power on/off

- * Set the time and days of the week for the tablet to automatically turn on/off

Audio profiles

- * Select audio profiles from **General**, **Silent** and **Outdoor**
- * Set the volumes for ring, notification, media and alarm

Storage

- * View and manage your storage space

Security & location

- * Set screen lock pattern, e.g. Password, PIN, Swipe etc.

- * Set the **Lock screen preferences**
- * Turn on/off the location services for specific Apps.
- * Set to show/hide the password when input a password. and more

Accounts

- * Add and manage the user accounts on your tablet

Accessibility

- * For vision and hearing impaired users, manage settings for **Screen readers**, **Display**, and more


Digital Wellbeing & parental controls

- * Check your app usage based on **Screen time**, **Notifications received**, or **Times opened** from **Dashboard**
- * Set a schedule for **Wind Down** and switch on the setting you prefer
- * Manage the related notification settings to reduce interruptions
- * Set up **Parental controls** to help your kids balance their screen time

Google

- * Set the preferences for Google related services

System

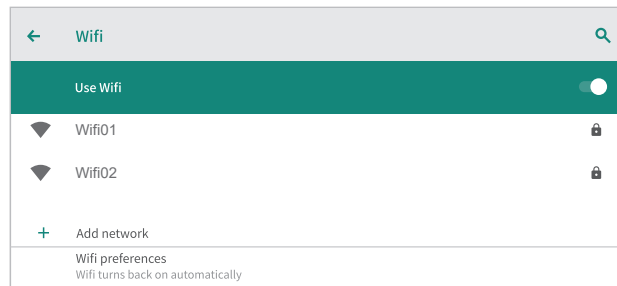
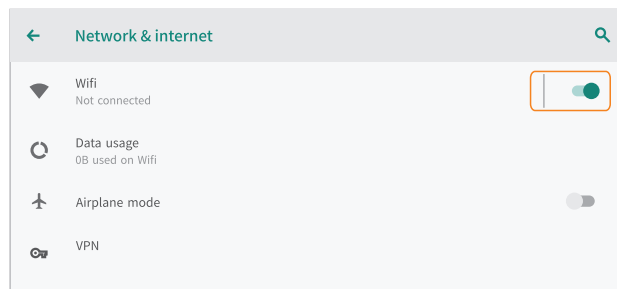
- * Check the detailed information about the tablet
- * Set Language
Tap **Languages & input** > **Languages** > **+Add a language** to add your language. After adding, hold and slide the  to the top to change the language.
- * Turn on/off the quick access to the camera.
- * Set the date and time
- * Turn on/off the **Back up to Google Drive**
- * Restore factory setting
Tap **Advanced** > **Reset options** > **Erase all data (factory reset)** to restore the factory setting

NETWORK CONNECTION

Launch the App **Settings** or long press the Wifi/Bluetooth icon in **Quick Settings**.

Wifi Connection

- 1 Tap **Network & internet** and turn on the **Wifi**. All the Wifi connections available will be listed.
- 2 Select your Wifi and input the correct password.



APP MANAGEMENT

App Download and Installation

- 1 Tap and open **Play Store** on the Home Screen.
- 2 Log into your **Google Account**, then search and download the App you need.

App Management

Move the App

Tap and hold the App, then slide it to a desired screen.

Remove the App from the Home screen

Touch and hold the App, then slide to **X Remove** to remove it from your Home Screen.

Uninstall the App

Touch and hold the App, then slide to the **Uninstall** to uninstall the App.

Clear the Cache of the App

- 1 Go to **Settings > Apps & notifications**.
- 2 Select an App > **Storage > CLEAR CACHE** to clear the cache.

INTERNET NAVIGATION

Please make sure the tablet is connected to a working Wifi network before navigating the Internet.

You may use the pre-installed Chrome browser or use another browser downloaded on the **Play Store**.

MULTIMEDIA

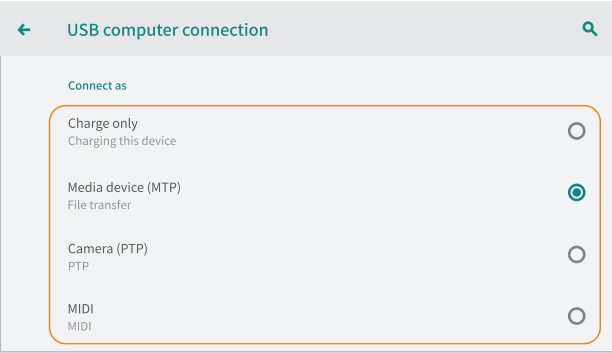


Connecting to a Computer

- 1. Connect your tablet to the computer with a Type-C cable.
- 2. **Media device(MTP)** is the default setting. Go to your computer and find your tablet CP80 to transfer files between your tablet and computer.

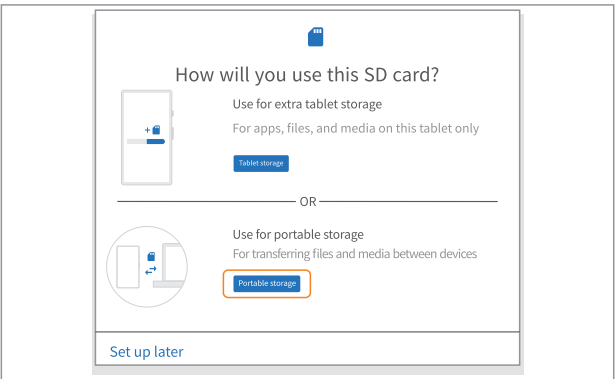
Tips:
Go to **Quick Settings**, tap **Android System** · **USB file transfer turned on** > **Tap for more options** > **USB computer connection** to select the option preferred.

- 1 Select **Charge Only** to charge your tablet.
- 2 Select **Camera(PTP)** to transfer photos between the devices.
- 3 Select **MIDI** to play MIDI instruments on the tablet.



Connecting to an External Device

- 1 Install a memory card with the capacity up to 128G and go to **Quick Settings**.
- 2 Tap **SET UP**.
- 3 Set the memory card as a portable storage by selecting **Portable storage**. Enter memory card storage to move files between the card and tablet.



SPECIFICATION



Size	8.0	Connection	Wifi
Chipset	RK3326S	CPU	Quad core 1.5GHz
GPU	GE8300	RAM	2GB
Display/Resolution	IPS 800* 1280	Storage	32GB
Front-facing Camera	2MP	Network	802.11 b/g/n BT4.0
Rear Camera	5MP	Power Supply	DC 5V/2A
Battery	4300mAh	Touch	Multi-touch
Operating System	Android™11	Ports	Type-C

TROUBLESHOOTING



Q1. The tablet doesn't power on.

- * Reboot your tablet after charging for more than 30 minutes.
- * Press the power button to check if the tablet is in the **Sleep Mode**.
- * Press and hold the power button for 10s to reboot it.
- * Press the **Reset** button with a pin to reboot the tablet.

Q2. The tablet doesn't charge.

- * Make sure the USB cable is properly plugged into the charging port.
- * Try another compatible USB cable and adapter.

Q3. Error message occurs during the operation.

- * Uninstall the App with the error message, then download and install again.

- * Press the **Reset** button with a pin to power off the tablet.

Q4. The tablet cannot be detected by the computer.

- * Make sure the tablet is powered on.
- * Try another USB cable.
- * Try another USB port on the computer.
- * Instead of **Charge only**, choose **Media device(MTP)** or **Camera(PTP)** when connecting the tablet to the computer.

Q5. The tablet cannot connect to the Wifi.

- * Make sure the **Wifi** in your tablet is **ON**.
- * Make sure you input the correct password when connecting the Wifi.
- * Restart the router.
- * Make sure there is no filter setting or device connection limitation in the setting of the router.
- * Forget the current Wifi, reset the router and connect the Wifi again.

Q6. The storage space of the tablet is not enough.

- * Delete the Apps you don't use.
- * Clear the cache of the Apps regularly.
- * Install a memory card to expand the storage.

Q7. The screen is unresponsive.

- * Check if the screen is dusty or greasy. If yes, please gently wipe the screen with a cloth to clean it.

Q8. The font size is too small to read.

- * Please go to **Settings > Display > Advanced > Font Size** to adjust the text size.

Q9. Can the tablet support OTG function?

- * Yes, but an extra OTG cable is required. You can connect the mouse or a USB drive through the cable then.

CAUTION

RISK OF EXPLOSION IF BATTERY IS REPLACED BY AN INCORRECT TYPE. DISPOSE OF USED BATTERIES ACCORDING TO THE INSTRUCTIONS



The symbol indicates DC voltage



RECYCLING

This product bears the selective sorting symbol for Waste electrical and electronic equipment (WEEE). This means that this product must be handled pursuant to European directive 2012/19/EU in order to be recycled or dismantled to minimize its impact on the environment.

This product can be used across EU member states.

FCC Statement

This device complies with part 15 of the FCC rules. Operation is subject to the following two conditions: (1) this device may not cause harmful interference, and (2) this device must accept any interference received, including interference that may cause undesired operation.

Changes or modifications not expressly approved by the party responsible for compliance could void the user's authority to operate the equipment.

NOTE: This equipment has been tested and found to comply with the limits for a Class B digital device, pursuant to part 15 of the FCC Rules. These limits are designed to provide reasonable protection against harmful interference in a residential installation. This equipment generates uses and can radiate radio frequency energy and, if not installed and used in accordance with the instructions, may cause harmful interference to radio communications. However, there is no guarantee that interference will not occur in a particular installation. If this equipment does cause harmful interference to radio or television reception, which can be determined by turning the equipment off and on, the user is encouraged to try to correct the interference by one or more of the following measures:

- Reorient or relocate the receiving antenna.
- Increase the separation between the equipment and receiver.
- Connect the equipment into an outlet on a circuit different from that to which the receiver is connected.
- Consult the dealer or an experienced radio/TV technician for help.

The device has been evaluated to meet general RF exposure requirement. The device can be used in portable exposure condition without restriction.