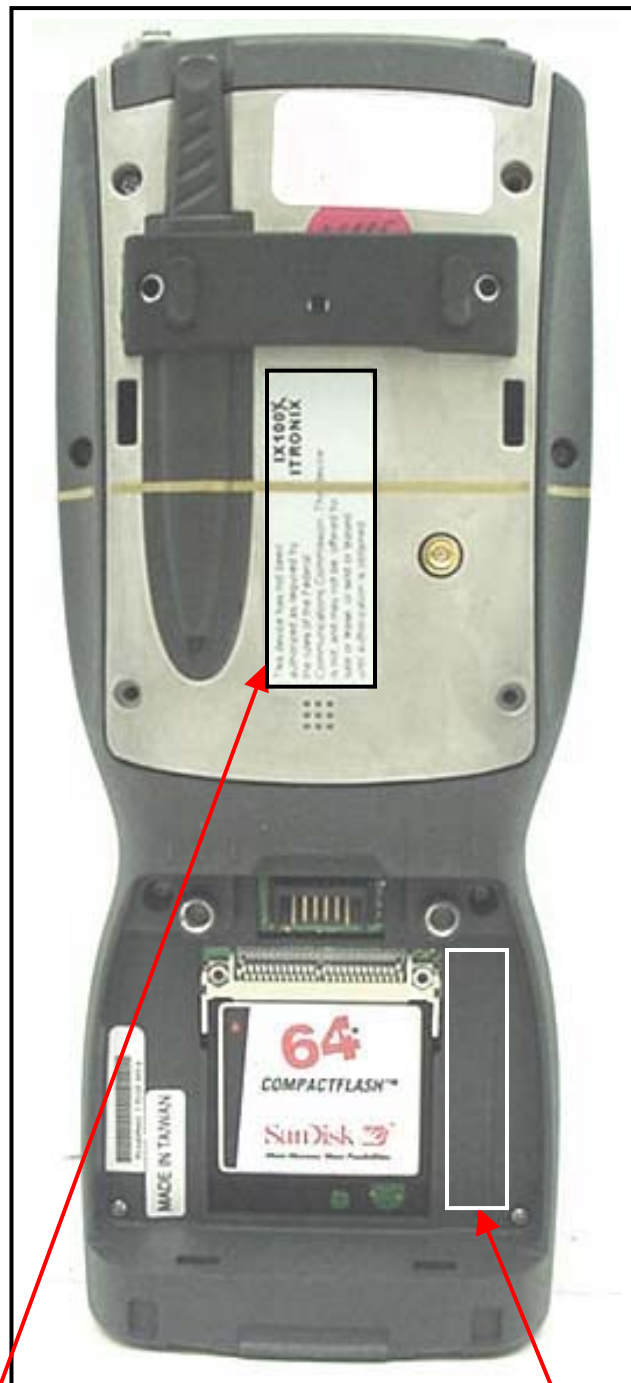


## FCC ID LABEL & LOCATION

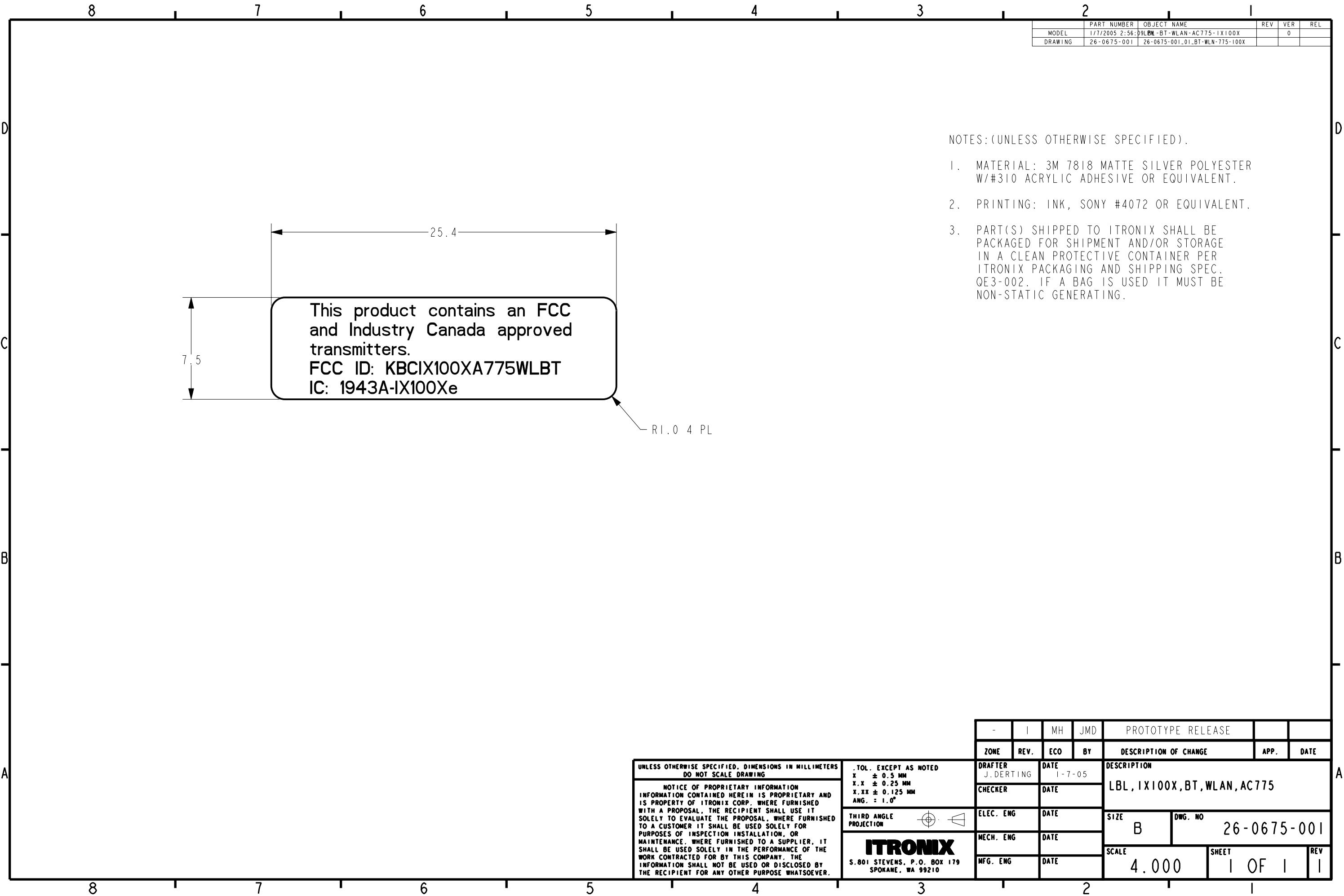
### LABELING REQUIREMENTS PER §2.925

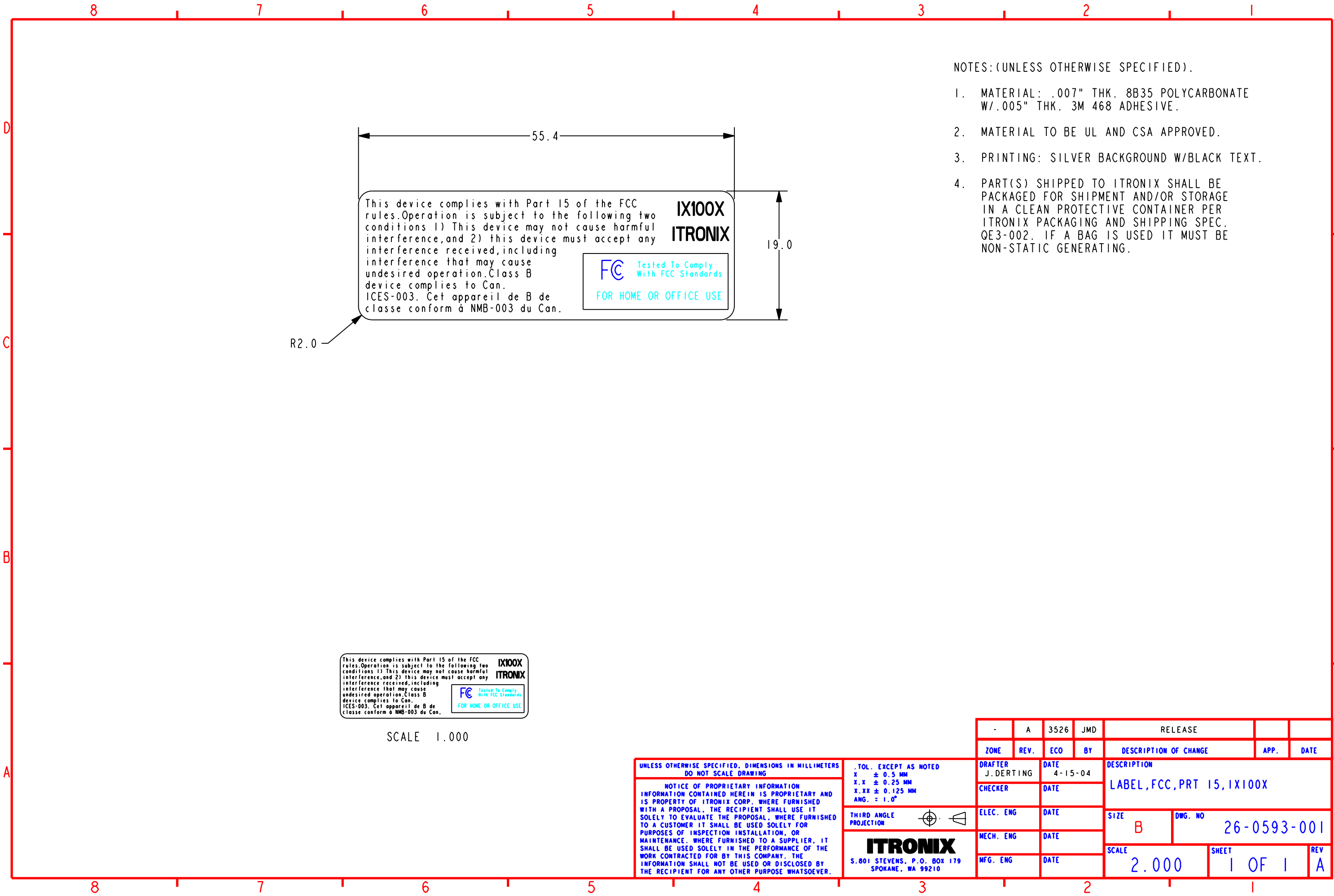
The label shall be permanently affixed at a conspicuous location on the device.



**SEE NEXT PAGE(S) FOR  
PART 15(B) FCC DoC LABEL**

**SEE NEXT PAGE(S) FOR  
PART 24(E) FCC ID LABEL**





- NOTES: (UNLESS OTHERWISE SPECIFIED).
- 1. MATERIAL: .007" THK. 8B35 POLYCARBONATE W/.005" THK. 3M 468 ADHESIVE.
  - 2. MATERIAL TO BE UL AND CSA APPROVED.
  - 3. PRINTING: SILVER BACKGROUND W/BLACK TEXT.
  - 4. PART(S) SHIPPED TO ITRONIX SHALL BE PACKAGED FOR SHIPMENT AND/OR STORAGE IN A CLEAN PROTECTIVE CONTAINER PER ITRONIX PACKAGING AND SHIPPING SPEC. QE3-002. IF A BAG IS USED IT MUST BE NON-STATIC GENERATING.