

MicroBlue

Internal Wireless Device Antenna

Part Number (P/N):

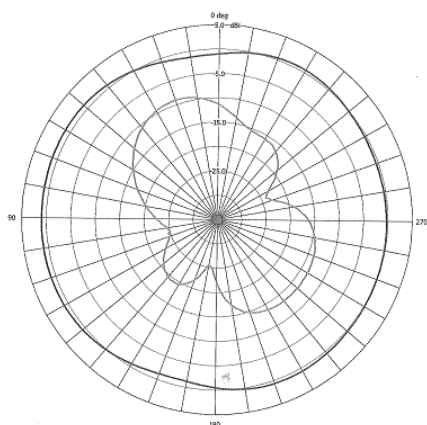
CAF94131

Features:

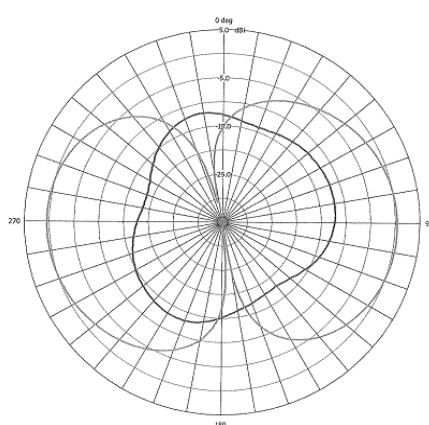
- Versatile and easy to use antenna for 2.4 to 2.5 GHz Bluetooth and IEEE 802.11 devices
- Designed for easy connection to radio cards
- Utilizes Centurion's patented PCB Microsphere technology
- Has a ground plane incorporated into the resonator structure, therefore no additional ground plane is required to radiate efficiently

Specifications:

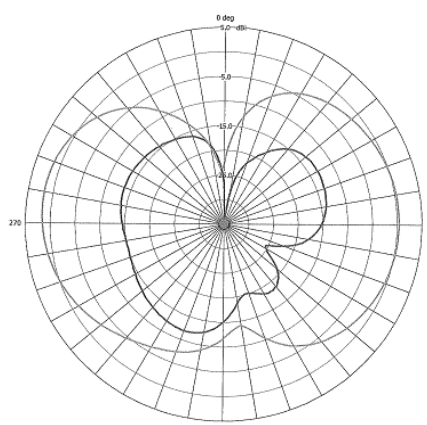
Frequency Range	2.4 – 2.5 GHz	
Polarization	Linear	
Peak Gain	1.5 dBi	
Average Gain	>0 dBi	
Nominal Impedance	50 ohms	
VSWR (Min. Performance)	2.4 - 2.5 GHz	< 1.8:1
	> 600 MHz	2.0:1
Temperature Range	-40° to +85°C	
Vibration	6G RMS (9.04g2/Hz) for 15 minutes each in vertical and horizontal. No appearance or functional axis.	
Thermal Shock	Change after 4 repeated cycles of 1 hr. at +85°C and 1 hr. at -40°C. Transfer time is 5 min.	
Dimensions (L x W x T)	1.88" x .89" x .032"	
Standard Cable	8" Brown RG-178 Coax	
Standard Connector	R. A. MMCX Plug	



**Azimuth Plane
2450 MHz**



**Elevation Plane, Phi = 0
2450 MHz**



**Elevation Plane, Phi = 90
2450 MHz**

Specifications subject to change without notice

MicroBlue – 10/28/02