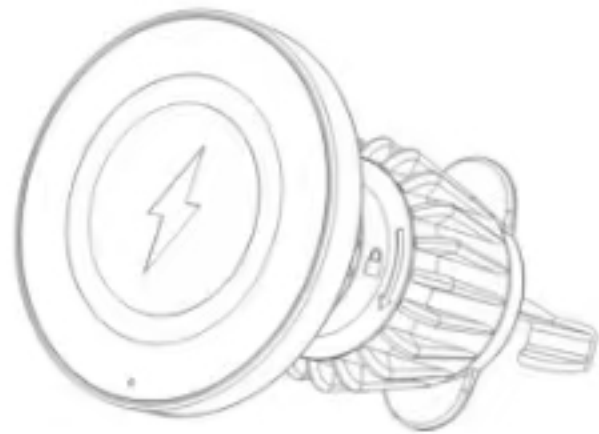


MAGSAFE CAR MOUNT CHARGE



W10 User Manual

Thank you for your purchasing our product.

We sincerely hope that you are happy with your purchase. We are committed to both your satisfaction and our products, therefore if you have any questions, please feel free to contact us. It will always be a pleasure to serve you.

Product specifications

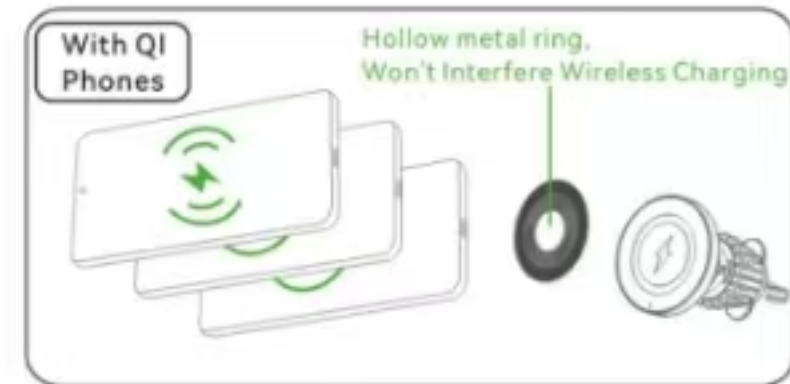
Product Name:	MagSafe Car Mount Charge
Product Model:	W10
Product Material:	Plastic, Magnet, Metal
MagSafe Head:	≈56mm
Product Input:	5V/3A, 9V/2.22A, 9V/3A, 12V/1.67A, 12V/2.5A
Product Output:	5W, 7.5W, 10W, 15W

The above parameters are for reference only. The actual parameters would be different because of product or other factors. The image shown here is indicative only.

About Wireless Charging

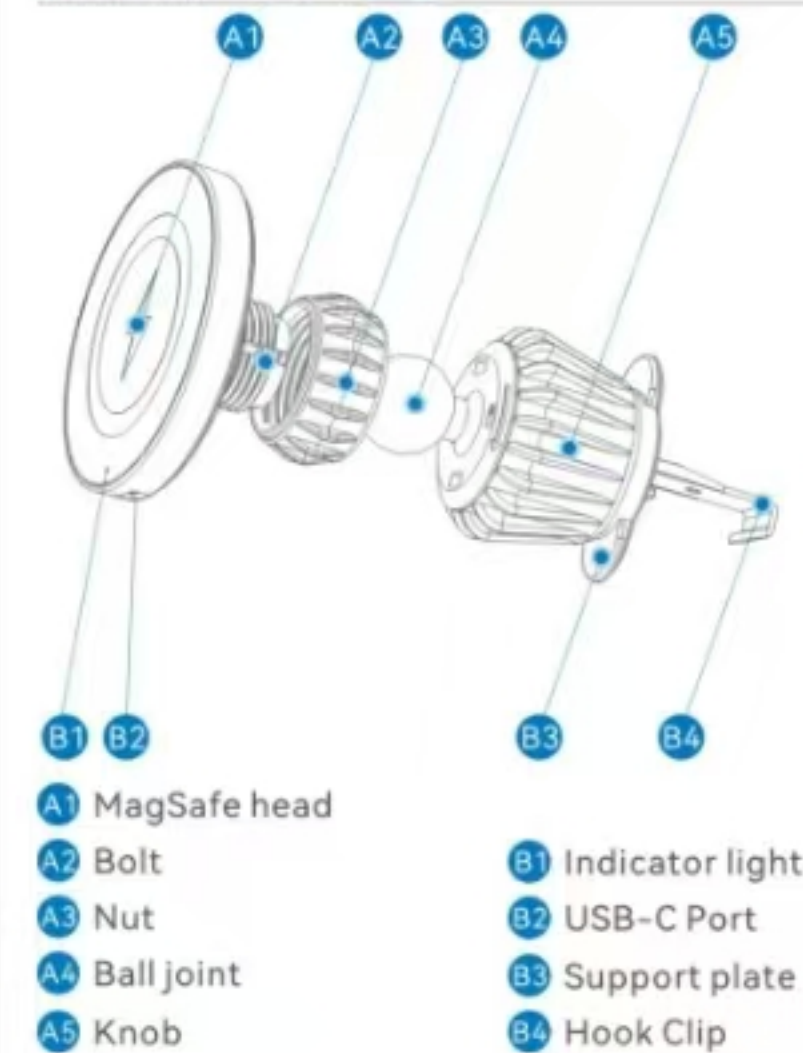


Compatible with iPhone 16/15/14/13/12 series and MagSafe Cases without installing the metal ring. Direct MagSafe adsorption wireless charging.



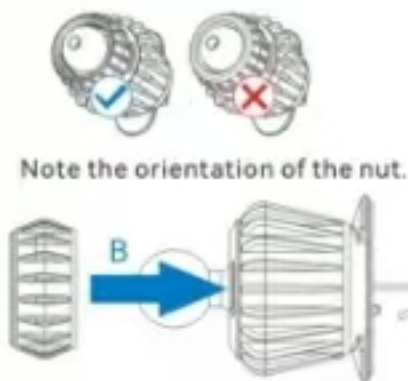
For other Qi-enabled phones and Non-magnetic cases, like iPhones before the iPhone 12, Samsung phones, Google Pixel phones, LG phones, and more. A metal ring needs to be installed. Then adsorb the metal ring for wireless charging.

About Wireless Charging

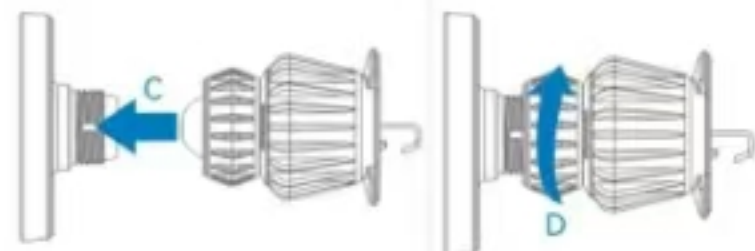


How to use the product

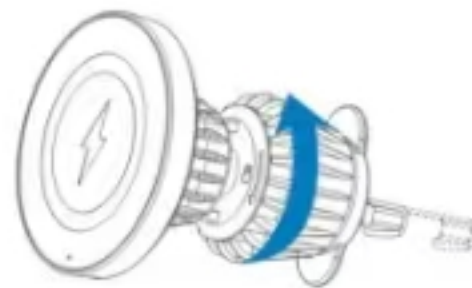
Rotate the nut to remove it.



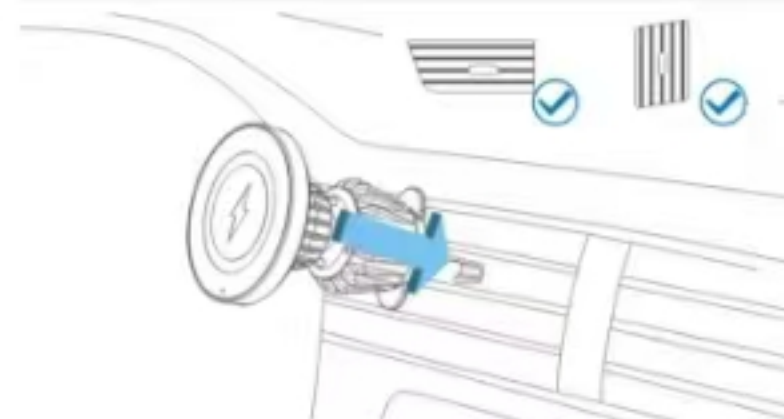
Note the orientation of the nut.



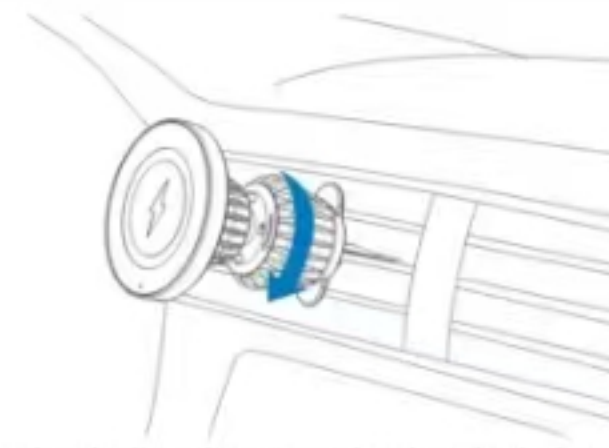
1. Carefully follow the steps to assemble the product. Note: the direction of the nut can not be wrong. To insert with force, make sure the ball joint inserted into the bolt.



2. Turn the knob. Adjust the hook clip to the longest.



3. Please insert the hook clip downward into the vent blade. This product is suitable for all horizontal and vertical vents.



4. Turn the hook clip adjustment knob to lock the vent blade tightly.

Note: too much force will damage the vent blade!



5. Insert the USB-C port of the charging cable into the bottom of the product. Plug the USB-A port into the car charger (QC 3.0 / 9V-2A minimum required).

FCC WARNING

This device complies with part 15 of the FCC Rules. Operation is subject to the following two conditions: (1) this device may not cause harmful interference, and (2) this device must accept any interference received, including interference that may cause undesired operation. Any changes or modifications not expressly approved by the party responsible for compliance could void the user's authority to operate the equipment.

NOTE: This equipment has been tested and found to comply with the limits for a Class B digital device, pursuant to Part 15 of the FCC Rules. These limits are designed to provide reasonable protection against harmful interference in a residential installation. This equipment generates, uses and can radiate radio frequency energy and, if not installed and used in accordance with the instructions, may cause harmful interference to radio communications.

However, there is no guarantee that interference will not occur in a particular installation. If this equipment does cause harmful interference to radio or television reception, which can be determined by turning the equipment off and on, the user is encouraged to try to correct the interference by one or more of the following measures:

- Reorient or relocate the receiving antenna.
- Increase the separation between the equipment and receiver.
- Connect the equipment into an outlet on a circuit different from that to which the receiver is connected.
- Consult the dealer or an experienced radio/TV technician for help.

To maintain compliance with FCC's RF Exposure guidelines, This equipment should be installed and operated with minimum 20cm distance between the radiator and your body; Use only the supplied antenna.