

C. Go on the configuration process. After connecting, it will pop up a message "Device added successfully," which means that the 3-in-1 Sky Moon Light has been connected.

APP Functions

1. Tap on the Sky Moon Light icon to enter the APP interface, and tap the "Power Switch" to turn on or off the light.
2. In the color interface, you can adjust the color, brightness and saturation.

Color interface



Adjust the color

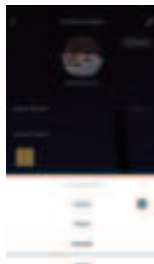
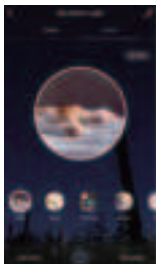
Adjust the brightness

Adjust the saturation

3. Timer: Add schedule or set a timer for the light to turn on and off.



4. Scenario mode: It provides multiple scenarios. You can tap the color icon to select your favorite water ripple color, brightness and saturation. Besides, there are 3 color changing methods for you to choose from - static, jumping or breathing. In the jumping and breathing mode, you can customize the speed of color change.



Connect to Amazon Alexa:

- (1) Search "Smart Life" through Google Play (for Android); Search "Smart Life" in APP Store (for iOS) and download the corresponding APP;
- (2) Open the APP and create a new account or log in (if you have already signed up);
- (3) Open "Smart Life" and connect it;
- (4) You can rename the device by using the "Smart Life" APP. For example, if you rename the 3-in-1 Sky Moon Light to "Livingroom Light," Echo will get the same name after connecting the device in Step 9;
- (5) Download "Amazon Alexa" APP from Amazon Market, Google Play or iOS App Store, and connect Echo to "Alexa" APP;
- (6) Search "Smart Life" in the Alexa Skills;
- (7) Tap to open "Smart Life," and then enter your username, password and region on the link page;
- (8) Authorize Alexa to log in to the "Smart Life" account you have signed up, and say to Echo: "Alexa, search the device, please." After completion, Echo will say: "search completed;"
- (9) All settings are completed. Try talking to Echo and control your device with voice.

Here are the voice commands that Smart Life has:

Alexa, turn on Sky Moon Light

Alexa, turn off Sky Moon Light

Alexa, set Sky Moon Light to 20 percent

Alexa, brighten/increase Sky Moon Light

Alexa, dim/decrease Sky Moon Light

Alexa, set Sky Moon Light to green

EN

DE

FR

ES

IT

JP

Troubleshooting Tips for Network Connection

1. Verify the Wi-Fi password by the following methods:

Open the list of wireless networks displayed on the phone, tap the Wi-Fi name to forget this network. Reconnect it and enter the password to see if the connection is successful. If not, please enter the correct Wi-Fi password.

2. The in-home Wi-Fi name cannot be displayed when connecting. Please check if the "location information" is enabled on the phone;

3. Check if the phone is connected to the 2.4GHz wireless network;

4. The Wi-Fi name should not contain Chinese, spaces and special characters;

5. The Wi-Fi password cannot be empty, with up to 58 characters. Do not use any special characters;

6. When connecting to Wi-Fi, keep the product as close to the router as possible. A distance of about 5 meters is recommended.

Specifications

Host Material	ABS
Input Rated Voltage	5VDC
Maximum Power	7.5W
Maximum Working Current	1.5A
Projection Light Source	LED light bead source
Projector Light Source Wavelength	Red light beads (620-625nm), green light beads (520-525nm), blue light beads (460-465nm), white light beads (color temperature 1500-15000k)
Projection Distance	2-10M/6.56-32.80ft

Projection Area	The projection area is 40 square meters at a distance of 5M and 60 square meters at a distance of 8M
Motor	Start voltage is 3 V , with 1-4 r/min
Input Power	100-240V AC 50/60HZ 1.5A (when used with a power supply transformer)
Operating Temperature	-20~50°C/-4~122°F
Storage Temperature	-20~60°C/-4~140°F
Product Model	SKE-LDQ-Y03
Laser Level	Class 1 (Class I)
Laser Power	< 0.4mW
Use and Maintenance	Indoor use, maintenance-free

EN

DE

FR

ES

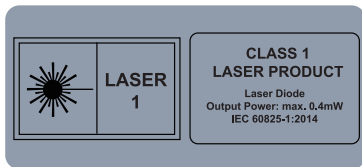
IT

JP

FOR SAFETY' S SAKE:

- **Not suitable for use in play by children**

- May not be suitable for people who have photo sensitive epilepsy
AVOID DIRECT EYE EXPOSURE
- [Class 1] LASER RADIATION - DO NOT STARE INTO BEAM - CLASS 1 LASER PRODUCT
- Do not damage the insulation of cable.
- Do not secure the wiring of the product with staples or nails
- Do not close doors or windows on the product as this may damage the wiring insulation.
- Do not lay the cable under carpet or where it can be damaged.
- Ensure that cables are fully unwound and sited where they will not become damaged or present a tripping hazard.
- Do not connect this product to the mains supply while it is in the packaging.
- Do not allow any plastic part to come into contact with heat or flame.
- Ensure table top transformers are positioned on flat, stable, heat resistant surfaces.
- Unplug the product when leaving the house, when retiring for the night or if left unattended
- Do not overload wall sockets. Use different sockets around the house to plug in multiple lights to balance the load.
- Please retain this information for future reference.



The light colour of this product is outside the limits as defined in ErP Regulations and therefore only suitable for decorative purposes.

Complies with safety requirements of IEC 60825-1: 2014

FCC Warning:

Any Changes or modifications not expressly approved by the party responsible for compliance could void the user's authority to operate the equipment.

Note: This equipment has been tested and found to comply with the limits for a Class B digital device, pursuant to part 15 of the FCC Rules. These limits are designed to provide reasonable protection against harmful interference in a residential installation. This equipment generates uses and can radiate radio frequency energy and, if not installed and used in accordance with the instructions, may cause harmful interference to radio communications. However, there is no guarantee that interference will not occur in a particular installation. If this equipment does cause harmful interference to radio or television reception, which can be determined by turning the equipment off and on, the user is encouraged to try to correct the interference by one or more of the following measures:

- Reorient or relocate the receiving antenna.
- Increase the separation between the equipment and receiver.
- Connect the equipment into an outlet on a circuit different from that to which the receiver is connected.
- Consult the dealer or an experienced radio/TV technician for help.

This device complies with part 15 of the FCC Rules. Operation is subject to the following two conditions: (1) This device may not cause harmful interference, and (2) this device must accept any interference received, including interference that may cause undesired operation.

"This equipment complies with RF radiation exposure limits set forth for an uncontrolled environment.

This equipment should be installed and operated with a minimum distance of 20 centimeters between the radiator and your body."