

# Quick Start Guide



Built to Endure

**AGM** Glory G1

English.....	1
--------------	---

Features of the product and its accessories described herein rely on the software, phone internal memory and local networks, and may not be activated or may be limited by local network operators or service providers. Therefore, the descriptions herein may not exactly match the purchased product or its accessories. The manufacturer reserves the rights to change or modify any information or specifications contained in this manual without prior notice or obligation. The manufacturer is not responsible for the legitimacy or quality of any products that you may upload or download through this device including but not limited to text, images, music, movies, and non-integral software. Any consequences arising from the usage of the preceding products on this device is the responsibility of the user.

## ABOUT Glory G1

---



## BASIC DESCRIPTION

### 1. Ejector hole

---Metal PIN hole to open the SIM/SD tray.

### 2. SIM/SD tray

---Supports Nano SIM and Micro SD card.

### 3. USB Type-C and Rubber Cover

---USB Type-C connector.

### 4. Sensor

---Optical proximity sensor and Ambient light sensor.

### 5. Receiver

---Waterproof receiver. Do not touch with hard pin.

### 6. Camera key

---Long press to quickly activate the camera.

Short press to take a photo or video when camera is on

### 7. Display

---5.7inch display.

### 8. Box Speaker

---Front loading speaker, do not cover or touch with hard pin.

### 9. Main MIC

---Waterproof MIC. Do not touch with hard pin.

### 10. Front Camera

---Takes front facing photos.

### 11. Volume up key

--- Press to increase the phone volume.

### 12. Volume down key

--- Press decrease the phone volume.

Press to mute the phone during an incoming call.

### 13. Power key

--- Long press power key to power phone on/off

Short press power key to lock/unlock the screen.

### 14. Main Camera

---Takes photos and videos.

### 15. LED

---LED flash light.

### 16. Fingerprint

---Fingerprint sensor

(\*Variant dependent. Some versions may not have Fingerprint)

### 17. NFC area

(\*Variant dependent. Some versions may not have NFC)

### 18. Sub MIC

---Noise reducing-waterproof MIC, do not touch with hard pin.

### 19. Air balance hole

---With waterproof film, do not cover or touch with hard pin

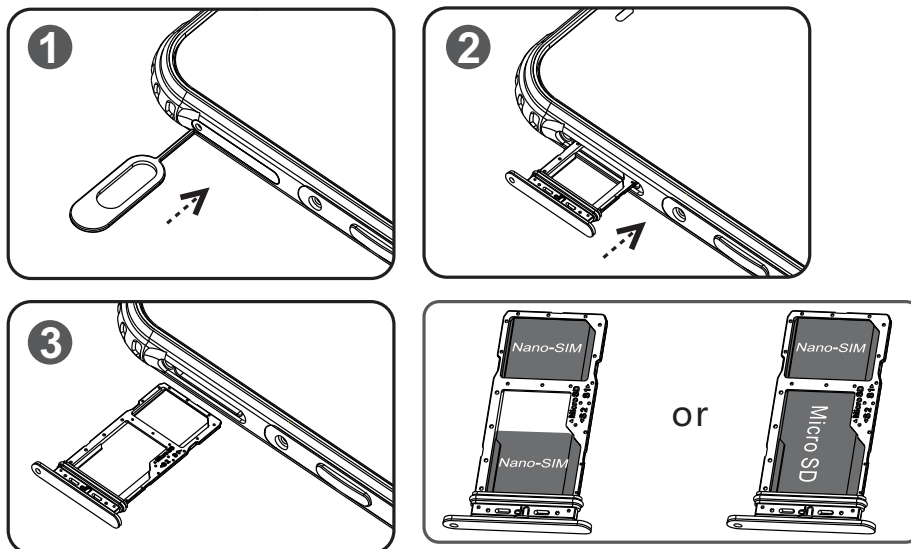
**Useful tips:**

1. In case the system stops working, press and hold down the power button until your device vibrates then release.
2. Do not cover Receiver, Main MIC and Sub MIC.
3. Adjust the volume to a comfortable level to prevent hearing damage.

**Waterproof warning:**

1. AGM A10 is IP68 certified.
2. USB rubber cover and SIM tray must be completely closed to prevent water damage
3. If the phone does come in to contact with water, it may affect the audio for a short period. In this case please dry the phone using a clean cloth and then allow it to stand and dry naturally for 30 minutes. This should restore the audio to the correct position.
4. Please do not use any other method, hairdryers for example, other than that listed above to dry your phone as this will affect the phones performance.
5. If you phone has received a strong shock or has been bent or twisted ensure that it does not come in to contact with water.

## PREPARING TO INSTALL THE SIM/MICRO SD CARD

**Installing the SIM and Micro SD card:**

1. Use the metal ejector pin provided to open the SIM tray.
2. Pull out the SIM tray.
3. Place Nano-SIM in inside position.

4. Place Nano-SIM or Micro SD card in outside position.
5. Make sure that the Nano-SIM and Micro SD card metal contact parts are facing down and that the cut corner aligned with tray in the correct position as per the diagram shown above.

**SIM Tips:**

1. The AGM A10 does not support 2 SIM cards data services working together. When inserting 2 SIM cards, you can only choose one of the 2 SIM cards to use 4G services. The AGM A10 supports dual SIM dual standby but single pass. This means that you cannot use both SIM cards for calls or data services simultaneously.
2. Nano-SIM and Micro SD card socket can only be used for either Nano-SIM or Micro SD card. Place the Nano-SIM vertically or place Micro SD card horizontally.
3. Do not insert or remove the tray when your phone is powered on.
4. Make sure the cards are correctly aligned and the tray is level before inserting it into the phone.
5. SIM card adapter. A cut SIM card or any other non-standard cards are not allowed. Those non-standard cards may not be recognized by the phone and can damage the tray.

**Micro SD Tips:**

1. Do not remove the Micro SD card while using the phone, as the card may be damaged. AGM will not be held responsible for any subsequent data loss or card damage resulting from this action.
2. Power off the phone before installing or removing the Micro SD card.
3. Please note that AGM does not provide Micro SD cards.

## **BATTERY AND CHARGING**

**Note:** The AGM A10 battery is not removable

**Standby time:**

1. The AGM A10 standby time is dependent on different working environments.
2. A Phone receiving a weak network signal and operating at low temperature will have a shortened standby time.
3. Screen brightness, system settings, games, music, video, location services, camera, Bluetooth, Wi-Fi and applications consume the most battery power.

**Charging the phone:**

1. Plug the USB Type-C cable into the phone.
2. Connect the USB power cable to the charging power adapter. Some version AGM A10 does not come along with a power adapter

in the box. AGM A10 supports CE/CB/FCC/CCC/EAC or equivalent certified chargers. The recommended charger output is 5V 3A. Uncertified equipment may cause damage to the device or cause batteries to explode.

3. Open the USB Type-C port cover and connect the USB power cable to the port. Be careful not to use excessive force when plugging the cable. Any damage caused by attempting to insert the connector incorrectly is not covered by the warranty.
4. Plug the charger into an AC mains socket.
5. When charging is complete remove the cable from the device, then unplug the power adapter from the mains socket. Close the USB port cover on the device.

**Tips:**

1. Fully charge the battery straight from the box, switching off the power when battery indicator shows full. Please do not leave the phone on charge when full as this may damage the battery and affect performance.
2. Disconnect the charger from mains power supply when not in use.
3. In the event of a fully discharged battery, please charge the phone for at least 15 minutes before powering it on.
4. The optimum working temperature for the AGM A10 is from 0°C - 40°C. Charging the phone outside this temperature range will damage the battery and shorten battery life.
5. Please use the certified charger and cable to ensure maximum performance and safety
6. Please note that the battery will still discharge itself even when the phone is not in use and switched off. If you plan to not use the unit for an extended period, you should still charge it at least every two months to prevent complete power loss and to protect your data.

## **FREQUENTLY USED FUNCTIONS**

**Lock/Unlock the screen:**

Press the POWER key.

The phone screen will be locked when the phone is not in use

**Unlocking the phone:**

Press the POWER key to unlock the screen and slide the screen up to unlock the phone.

**Taking a Screenshot:**

Press the POWER key and VOLUME DOWN key at the same time.

**Making a call:**

1. Touch the phone icon on home screen.
2. Open dial pad and input phone number.
3. Touch the call record icon to check call records.
4. Touch contact icon to check contact menu.

**Sending an SMS:**

1. Touch the message icon on home screen.
2. Create a new message.
3. At the top of the screen, enter a phone number or select a contact.  
Type your message, then send.

**Send an email:**

1. Touch the Email icon on the Home or All Apps screen.
2. If you have already signed into an Email account during setup, your email will be synchronized to your device. Otherwise, add an email address now.

**WIFI Connection:**

1. Touch the Settings icon to enter Settings menu.
2. Touch the WIFI icon to enable or disable WIFI.

**Enabling Data:**

1. Touch the Settings icon to enter the Settings menu.
2. Touch the SIM card icon to enable data connection.
3. Disable data connection when not use.

**Location Services:**

1. Touch Settings icon to enter Settings menu.
2. Touch Location icon to turn on/off location services.
3. Turn off Location Services to save power when not in use.

**Adding a Language:**

1. Touch the Settings icon to enter Settings menu.
2. Touch the Language icon and select Language.
3. Touch Add icon to choose your language.
4. Press and Hold the language you have chosen and move to top.

**Taking a Photo:**

1. Touch the Camera icon to activate camera menu.
2. Touch the shot icon to take a photo.
3. Touch the switch icon to switch rear and front camera.
4. Touch the view icon to check photo or video history.
5. Touch the video icon to shoot a video.



## FUNCTIONS SHORTCUT MENU

1. Pull down from status bar and open notification panel.
2. Press the shortcut icon to activate/ de-activate the functions.

## ADDITIONAL FUNCTIONS

### \*App White List

To save energy, parts of AGM smartphones support application white list function. By enabling function, applications will be closed automatically when the screen is off.

To disable this function, please open the App White List and turn off the auto cleanup switch.

Note: Some models may need go to Settings menu, select security and choose Memory cleanup.

\*For models with this function

## WARNING



At full volume, extended use of the mobile audio player may damage the user's hearing.

Please install only officially released applications for the AGM A10. AGM is not responsible for any 3rd parties' application data.

## COMPLIANCE

This device complies with the essential requirements and other provisions contained in Directive 2014/53/EU.

Copyright © AGM Group Limited  
2020. All rights reserved.

THIS DOCUMENT IS FOR INFORMATION PURPOSES ONLY, AND  
DOES NOT CONSTITUTE ANY KIND OF WARRANTY.

## **FCC RF EXPOSURE INFORMATION:**

### **WARNING!! Read this information before using your phone**

In August 1986 the Federal Communications Commission (FCC) of the United States with its action in Report and Order FCC 96-326 adopted an updated safety standard for human exposure to radio frequency (RF) electromagnetic energy emitted by FCC regulated transmitters. Those guidelines are consistent with the safety standard previously set by both U.S. and international standards bodies. The design of this phone complies with the FCC guidelines and these international standards. Use only the supplied or an approved antenna. Unauthorized antennas, modifications, or attachments could impair call quality, damage the phone, or result in violation of FCC regulations. Do not use the phone with a damaged antenna. If a damaged antenna comes into contact with the skin, a minor burn may result. Please contact your local dealer for replacement antenna.

## **BODY-WORN OPERATION:**

This device was tested for typical body-worn operations with the back/front of the phone kept 1.0cm from the body. To comply with FCC RF exposure requirements, a minimum separation distance of 1.0cm must be maintained between the user's body and the back/front of the phone, including the antenna. Third-party belt-clips, holsters and similar accessories containing metallic components shall not be used. Body-worn accessories

that cannot maintain 1.0cm separation distance between the user's body and the back/front of the phone, and have not been tested for typical body-worn operations may not comply with FCC RF exposure limits and should be avoided.

For more information about RF exposure, please visit the FCC website at [www.fcc.gov](http://www.fcc.gov)

Your wireless handheld portable telephone is a low power radio transmitter and receiver. When it is ON, it receives and also sends out radio frequency (RF) signals. In August, 1996, the Federal Communications Commission (FCC) adopted RF exposure guidelines with safety levels for handheld wireless phones. Those guidelines are consistent with the safety standards previously set by both U.S. and international standards bodies:

<ANSI C95.1> (1992) / <NCRP Report 86> (1986) / <ICNIRP> (1999)

Those standards were based on comprehensive and periodic evaluations of the relevant scientific literature. For example, over 120 scientists, engineers, and physicians from universities, government health agencies, and industry reviewed the available body of research to develop the ANSI Standard (C95.1). Nevertheless, we recommend that you use a hands-free kit with your phone (such as an earpiece or headset) to avoid potential exposure to RF energy. The design of your phone complies with the FCC guidelines (and those standards).

Use only the supplied or an approved replacement antenna. Unauthorized antennas, modifications, or attachments could damage the phone and may violate FCC regulations.

## **NORMAL POSITION:**

Hold the phone as you would any other telephone with the antenna pointed up and over your shoulder.

### **RF Exposure Information:**

This product is compliance to FCC RF Exposure requirements and refers to FCC website <https://apps.fcc.gov/oetcf/eas/reports/GenericSearch.cfm> search for FCC ID: 2A3DR-G1 to gain further information include SAR Values.

This device complies with part 15 of the FCC rules. Operation is subject to the following two conditions:

(1) this device may not cause harmful interference, and

(2) this device must accept any interference received, including interference that may cause undesired operation.

NOTE: The manufacturer is not responsible for any radio or TV interference caused by unauthorized modifications to this equipment. Such modifications could void the user's authority to operate the equipment.

NOTE: This equipment has been tested and found to comply with the limits for a Class B digital device, pursuant to part 15 of the FCC Rules. These limits are designed to provide reasonable protection against harmful interference in a residential installation. This equipment generates uses and can radiate radio frequency energy and, if not installed and used in accordance with the instructions, may cause harmful interference to radio communications. However, there is no guarantee that interference will not occur in a particular installation. If this equipment does cause harmful interference to radio or television reception, which can be determined by turning the equipment off and on, the user is encouraged to try to correct the interference by one or more of the following measures:

- Reorient or relocate the receiving antenna.
- Increase the separation between the equipment and receiver.
- Connect the equipment into an outlet on a circuit different from that to which the receiver is connected.
- Consult the dealer or an experienced radio/TV technician for help

Changes or modifications to this unit not expressly approved by the party responsible for compliance could void the user's authority to operate the equipment.

This device is acting as slave and operating in the 2.4 GHz (2412 ~2462 MHz) band. Ad Hoc function is supported but not able to operate on non-US frequencies.