

# **DHP380A**

## **2.4GHz Digital Wireless Headphone**



## **User Manual**

Please read before using this headphone.

## **INTRODUCTION**

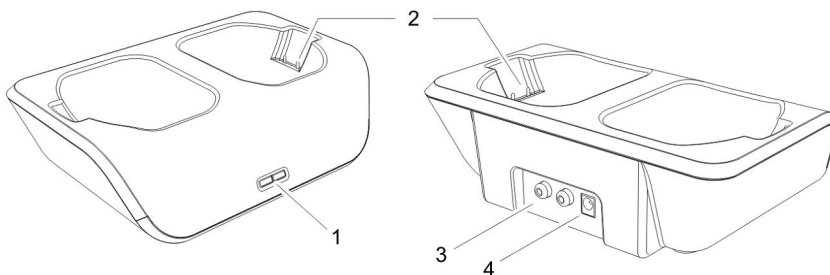
This 2.4GHz Digital Wireless Headphone uses latest digital wireless technology that enables you to enjoy crystal sound stereo music and TV sound anywhere inside your home. Simply connect the transmitter to a desired audio source: DVD player, CD player, TV set, VCR , Hi-Fi system, or iPod. Without complicated wiring and installation, the system enables you to enjoy thrilling, lifelike sound in minutes.

## **FEATURES**

1. 2.4GHz Digital UHF Technology
2. 31-Channel Frequency Hopping System
3. Smart Volume Memory preset
4. Electronic Volume Control
5. Low Power Indicator Alert
6. Docking Charge Mechanism
7. Auto On/Off (when without signal)
8. Muting
9. Speed charging mechanism

## **COMPONENT PART LIST**

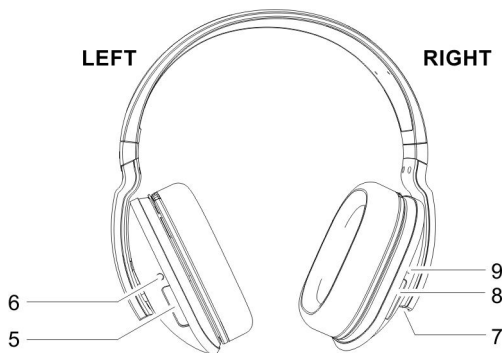
### **A) Transmitter**



- 1. Power / Audio Signal & Charging indicator
- 2. Charging pins
- 3. Audio IN socket
- 4. DC IN socket

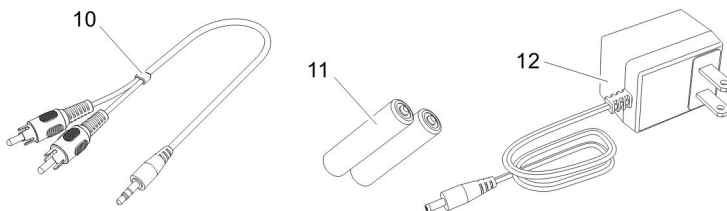
### **B) Headphone Receiver**

- 5. Volume Up and Down Control
- 6. Signal link LED indicator
- 7. Charging contacts
- 8. ON/OFF Control
- 9. Power LED indicator



### **C) Accessories**

- 10. RCA cable
- 11. NiMH AAA size batteries for Headphone (2 pieces)
- 12. AC/DC adaptor

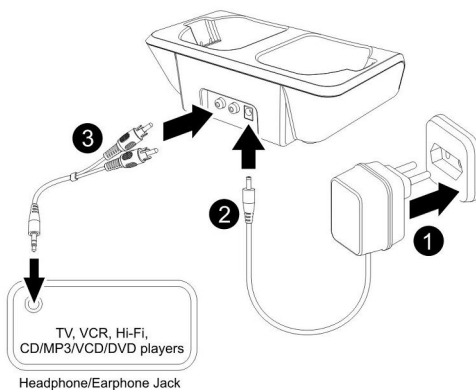


## **INSTALLATION**

### **TRANSMITTER**

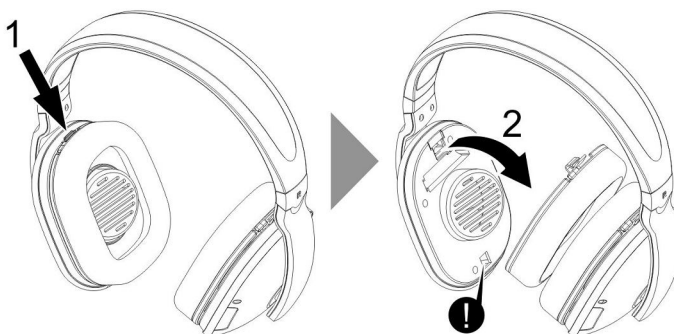
1. Connect the supplied AC/DC power adaptor to an electrical wall outlet.
2. Plug the AC/DC power adaptor in the DC jack located on the rear of the transmitter. The red Power/Audio Signal LED start to flash for around 6 seconds.
3. The rear of the transmitter has one audio cord that can be connected to audio output jack of TV, DVD, VCD, VCR, Hi-Fi, iPod and MP3 player.

Plug the adaptor in the AC source and connect the audio plug to the audio source. Turn on audio source, then the transmitter will automatically switch on and the Red LED will light up when it receives an audio signal.



### **HEADPHONE RECEIVER**

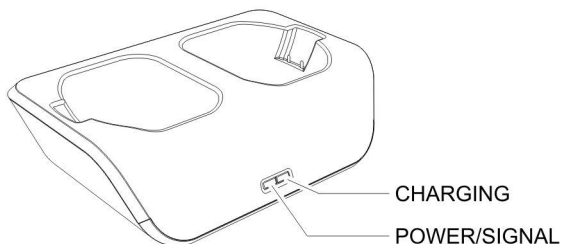
1. To install or replace the rechargeable batteries, carefully remove the earpad mounting from the right earphone cabinets.
2. Insert 2 pieces of AAA size rechargeable batteries (supplied in the package) into the right earphone's battery compartment (supplied in the package). Make sure the batteries are placed at the right polarity.
3. Snap the earpad mounting back to the earphone cabinet after inserted the batteries.



## **OPERATION**

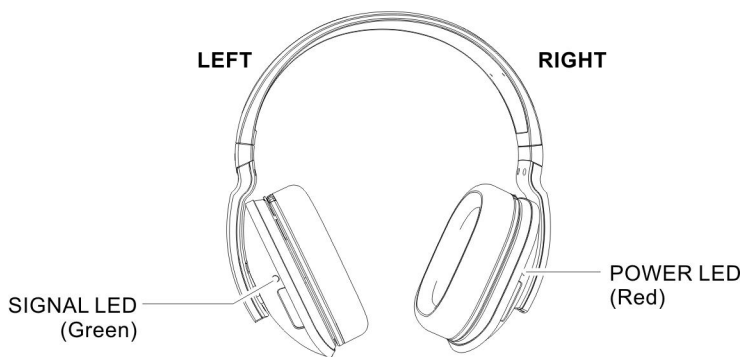
### **TRANSMITTER**

Turn on the audio source (TV or audio component) to which the transmitter is connected with. The Power / Signal LED on the transmitter will start light on in red when it receives the audio signal.



### **HEADPHONE RECEIVER**

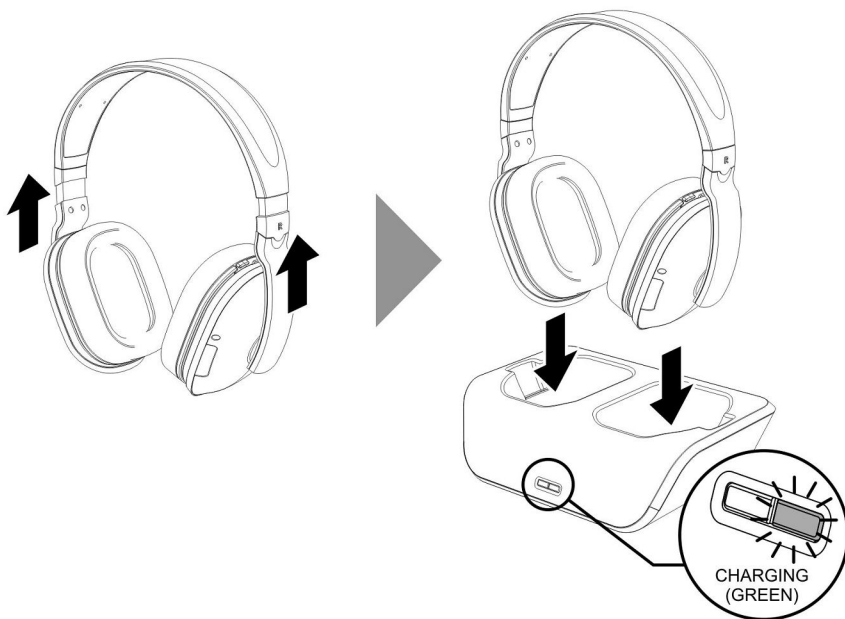
1. Turn on the headphone by pressing and hold the Power button around 1 second. The POWER LED (Red) will light up, the SIGNAL LED (Green) will be flashing until signal link between transmitter and receiver is established



2. Place the headphone on your head and adjust for comfort. To obtain the desired sound level, you can adjust the volume control on the headphone.
3. If interference or poor signal reception occurs, the headphone will perform the muting function automatically, and the SIGNAL LED (Green) will be off, searching for the best channel.

#### 4. Charging the batteries

- a) Turn OFF the headphone by pressing and hold the Power button around 1 second .
- b) Retract the cabinet hanger back to the Headband.
- c) Place the headphone on the transmitter's charging cradle. The charging process begins automatically, and the charging LED will light up in green when the charging contacts of transmitter and headphone are made successfully. When the charging process is completed, the charging LED will off
- d) For the initial use, please charge the battery for 7 hours.
- e) If the headphone is not in use, please place it back to the transmitter's charging cradle.



#### **IMPORTANT**

##### 1. Switching Off

- a) For protection of the transmitter and power saving, the transmitter will be off automatically if there is no audio source signal for around 3 minutes. If the audio source signal returns, the transmitter will automatically switches back on. Then, power on the headphone again
- b) The headphone will switch off automatically if there is no signal from the transmitter for 3 minutes

##### 2. Make sure the headphone is turned off when charging is in process

##### 3. Only use the included rechargeable AAA batteries. When the headphone is not in use, turn the headphone OFF.

##### 4. To ensure a long service life, fully charge the batteries before using the headphone for the first time. Ensure the charging socket located on the right earphone connects securely with the charge

prongs on the transmitter cradle. Depends on the capacity of the rechargeable battery to be used, the battery charging process will be around 5 to 7 hours.

**This device must be used with the AC/DC adaptor supplied in the package.**

## **WARNING:**

Never attempt to recharge conventional dry cells.

Batteries (battery pack or batteries installed) shall not be exposed to excessive heat such as sunshine, fire or the like.

Never use another type of battery or non-rechargeable batteries to replace the rechargeable (LR03/AAA) batteries supplied. When the headphones are not in use, switch it OFF to avoid damaging the batteries.

Excessive sound pressure from earphones and headphones can cause hearing loss.

## **TROUBLE SHOOTING**

### **No Sound**

- Ensure the AC/DC adaptor is fully inserted into the AC outlet and the power connection input on the transmitter.
- Ensure the headphone is switch ON.
- Headphone battery charge level may be too low, recharge the batteries fully.
- Ensure the TV or the connected audio device is switched ON.
- The volume of headphone may be too low, adjust the volume to a moderate level.
- The audio signal input level is too low. Increase the volume of the audio source.

### **Distortion**

- Ensure the volume level of headphone is set to an approximate level.
- The headphone is too far from the transmitter, move it closer.
- The audio signal input level is too low. Increase the volume of the audio source.

## **TECHNICAL SPECIFICATIONS**

Transmission Mode	:	UHF Stereo
Carrier Frequency	:	2.4GHz Digital
Operation Voltage	:	Transmitter, DC 5V 550mA
		Headphone, 2 x AAA size Rechargeable NiMH batteries (included)
Frequency Response	:	30Hz~ 20KHz
Distortion	:	0.5%
S/N Ratio	:	75dB
Operation Distance	:	Up to 30 meters

**FCC STATEMENT**

This device complies with part 15 of the FCC Rules. Operation is subject to the following two conditions:

(1) This device may not cause harmful interference, and

(2) This device must accept any interference received, including interference that may cause undesired operation.

**WARNING:** Any changes or modifications to this unit not expressly approved by the party responsible for compliance could void the user's authority to operate the equipment.

**NOTE:** This equipment has been tested and found to comply with the limits for a Class B digital device, pursuant to Part 15 of the FCC Rules. These limits are designed to provide reasonable protection against harmful interference in a residential installation. This equipment generates uses and can radiate radio frequency energy and, if not installed and used in accordance with the instructions, may cause harmful interference to radio communications. **However**, there is no guarantee that interference will not occur in a particular installation. If this equipment does cause harmful interference to radio or television reception, which can be determined by turning the equipment off and on, the user is encouraged to try to correct the interference by one or more of the following measures:

—Reorient or relocate the receiving antenna.

—Increase the separation between the equipment and receiver.

—Connect the equipment into an outlet on a circuit different from that to which the receiver is connected.

—Consult the dealer or an experienced radio/TV technician for help.

FCC RF Radiation Exposure Statement Caution: To maintain compliance with the FCC's RF exposure guidelines, place the product at least 20cm from nearby persons.

The farthest working distance between the TX and RX is 5m.