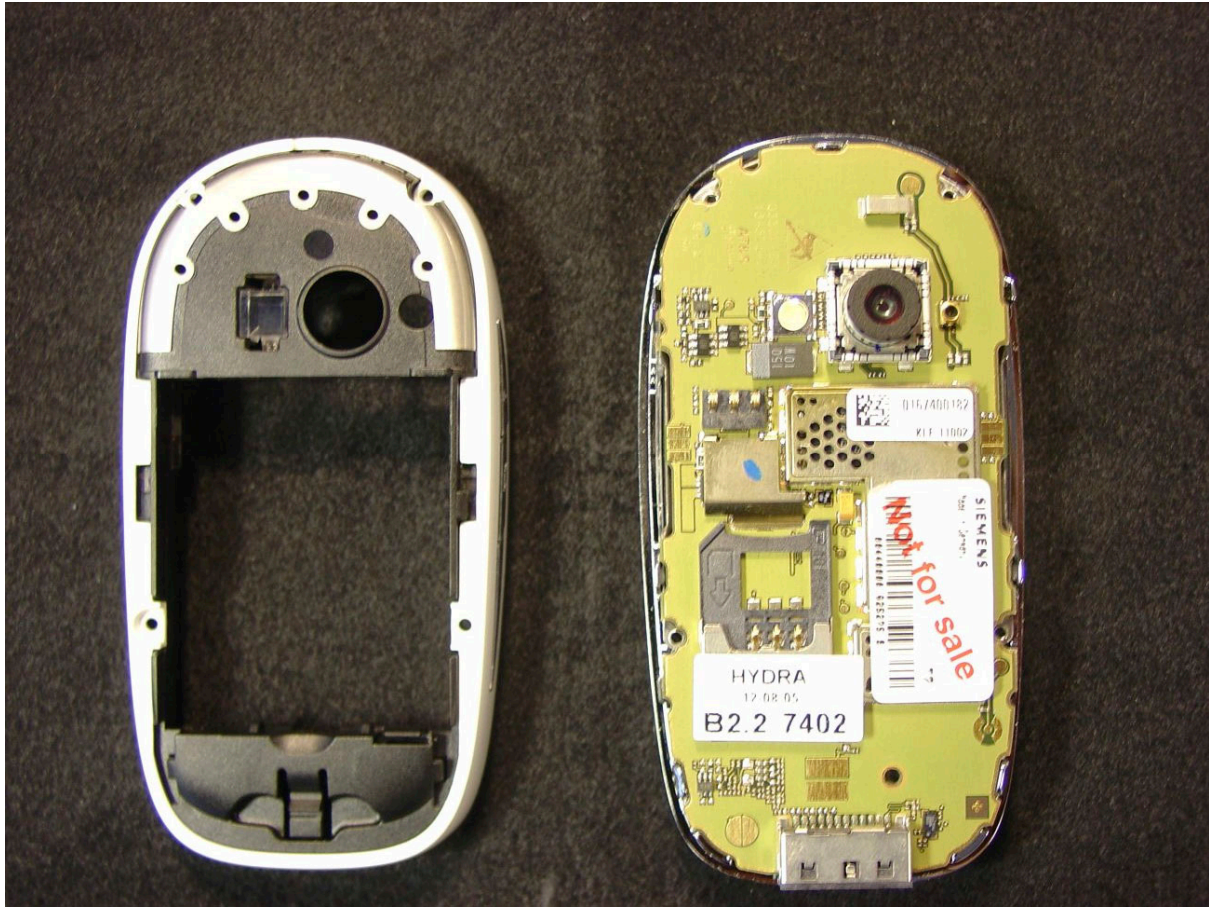




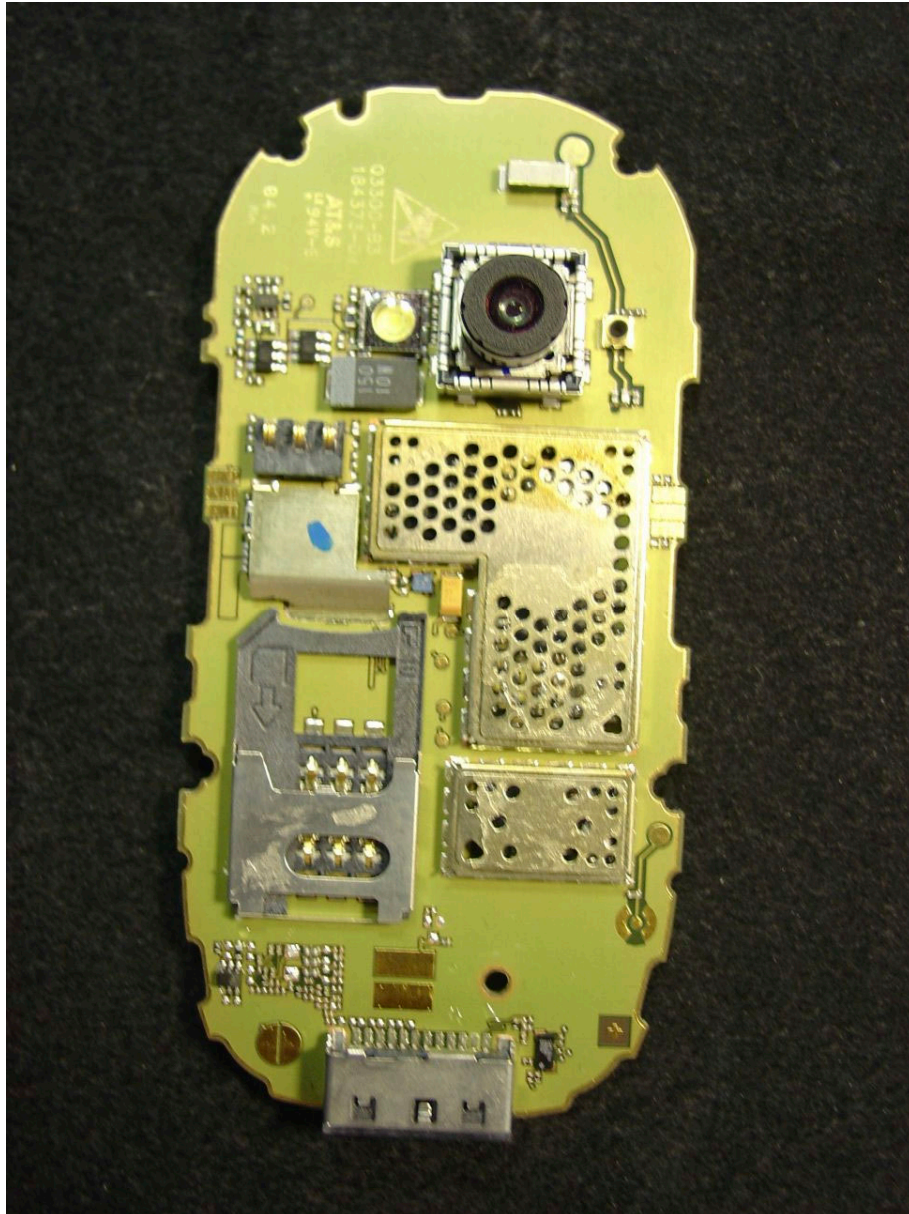
SL75 - Open Battery Cover



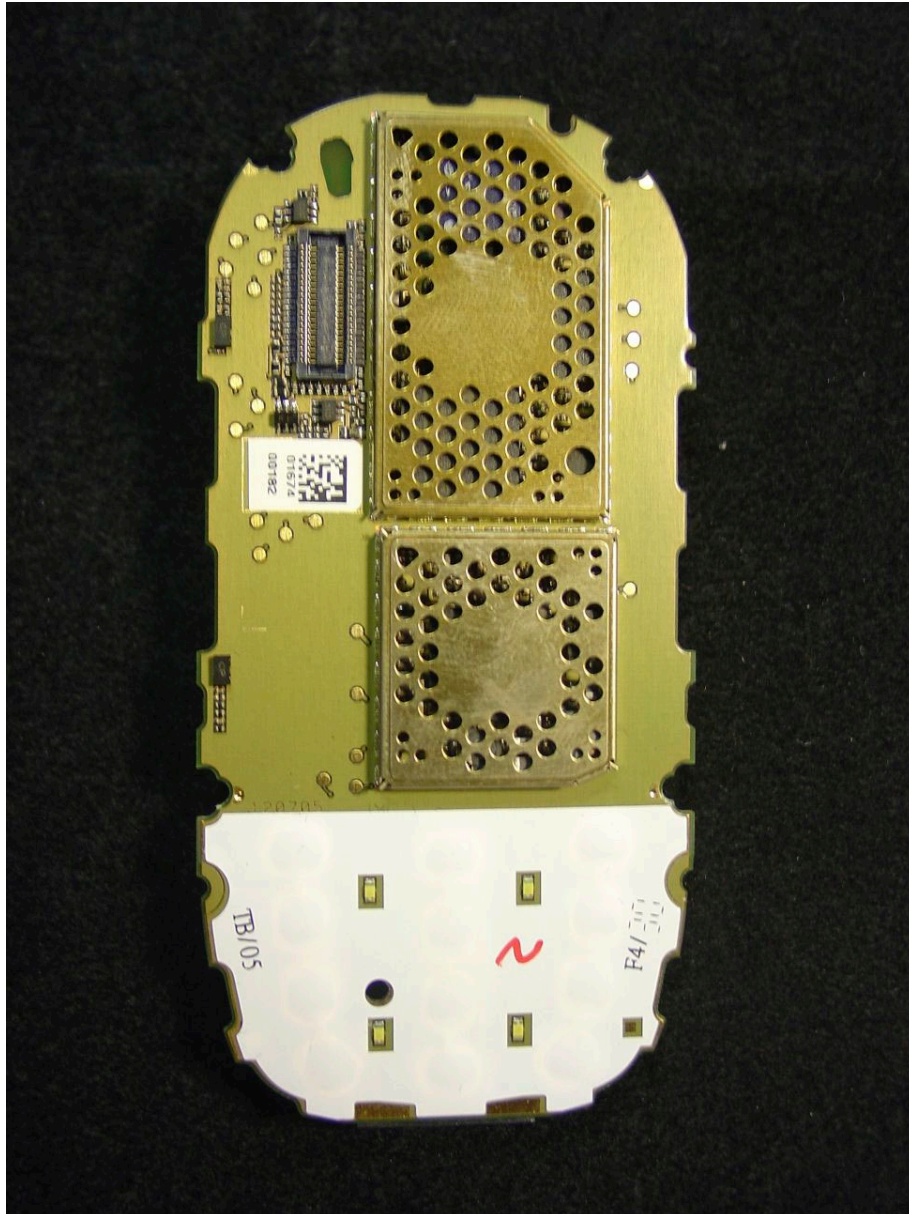
SL75 - open Front Cover



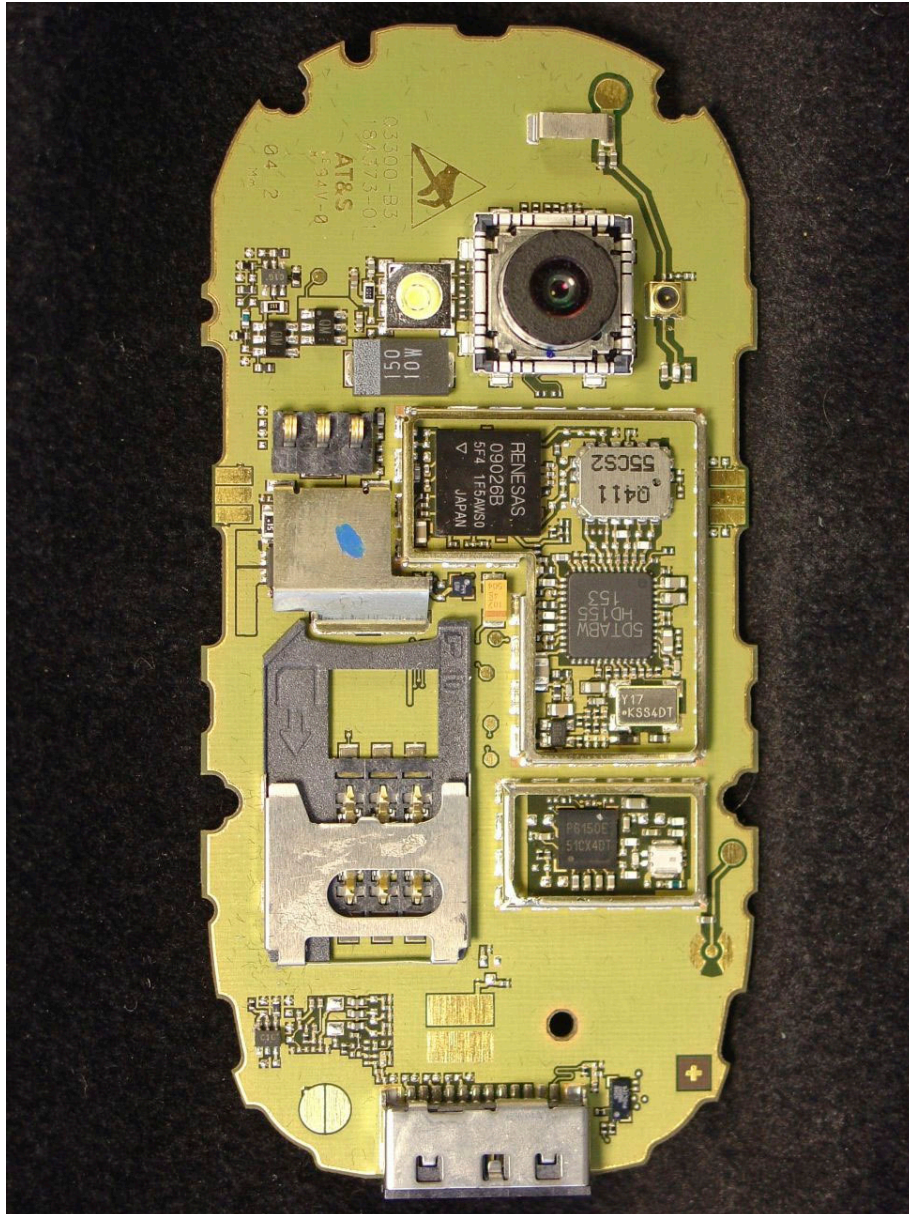
SL75 - open Back Cover (with antenna), Printed Circuit Board with labeling



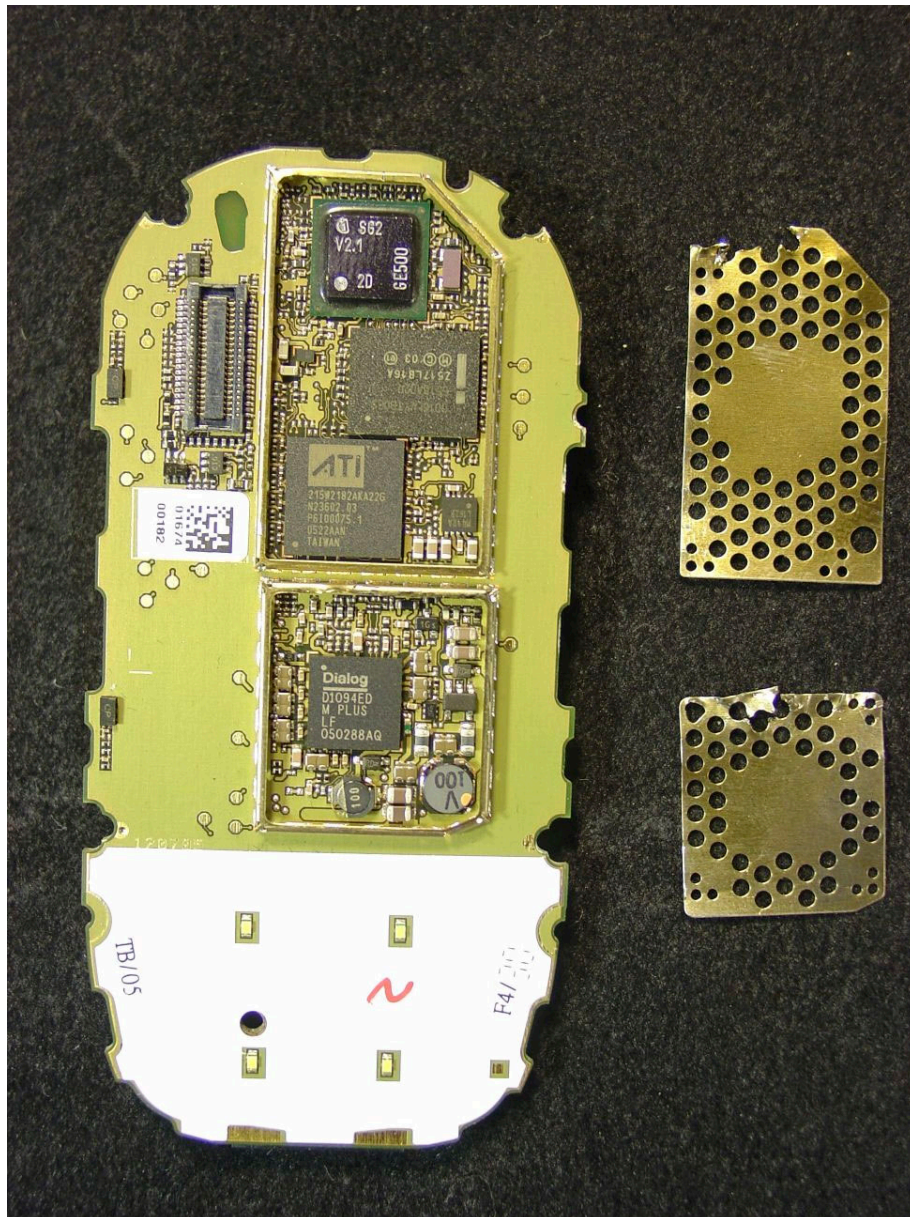
SL75 - Printed Circuit Board, back view



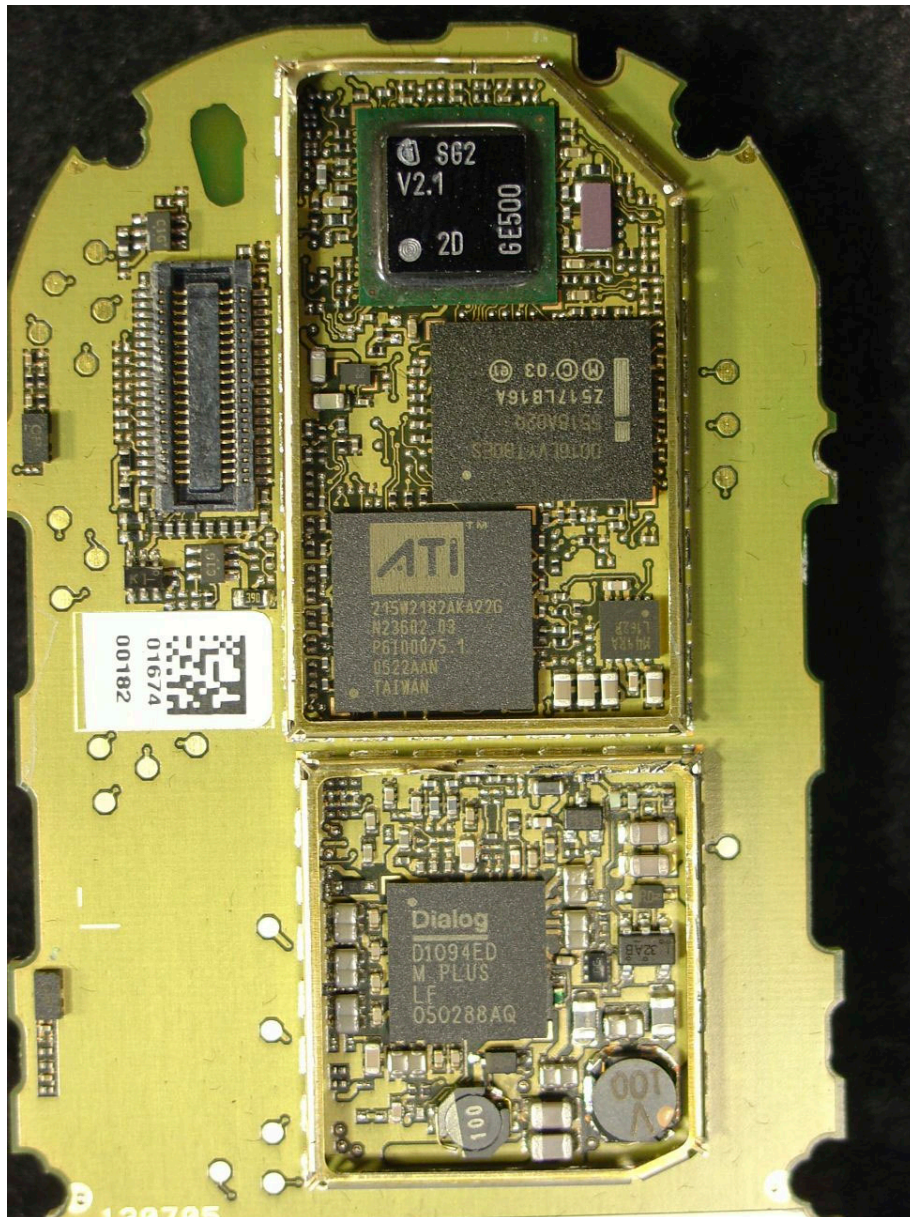
SL75 - Printed Circuit Board, front view



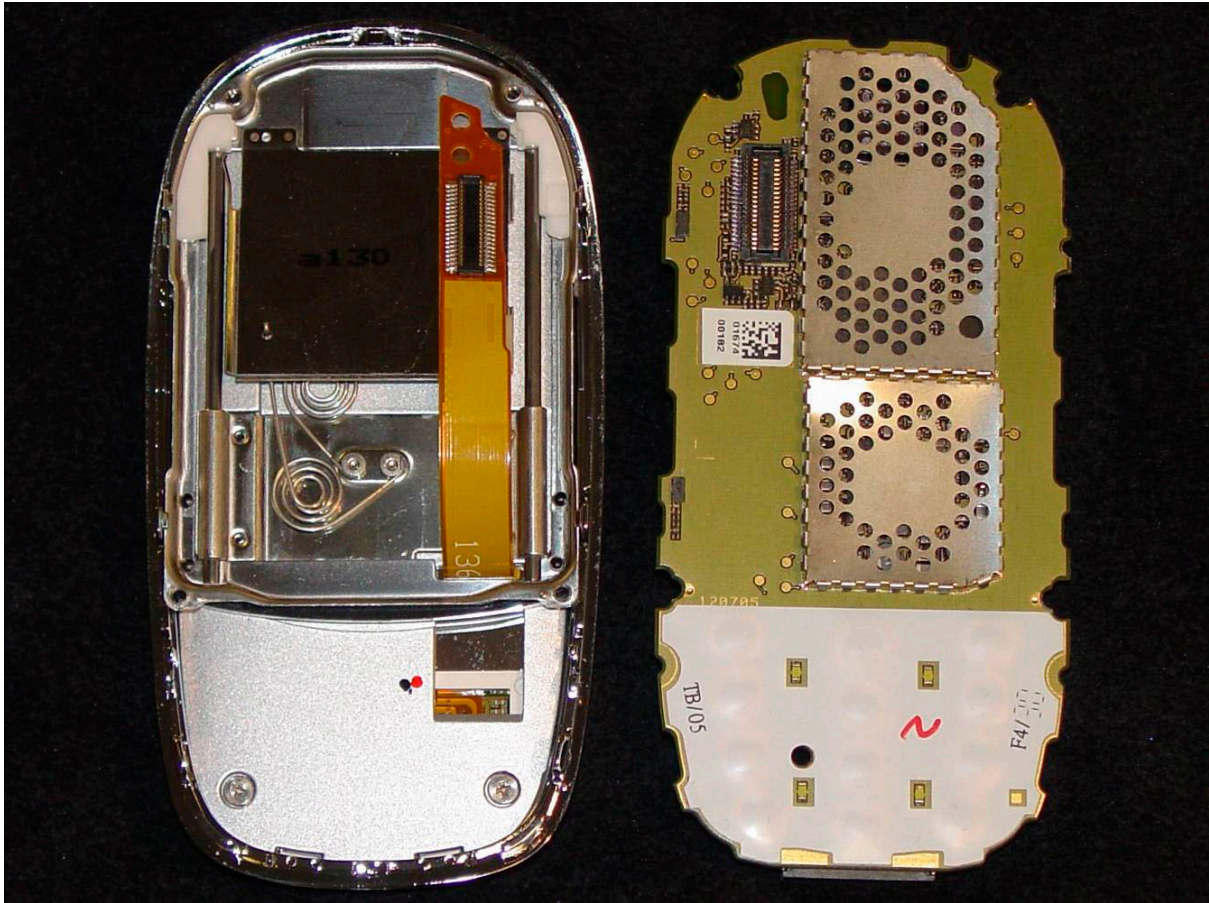
SL75 - Printed Circuit Board, back view with shield lid removed



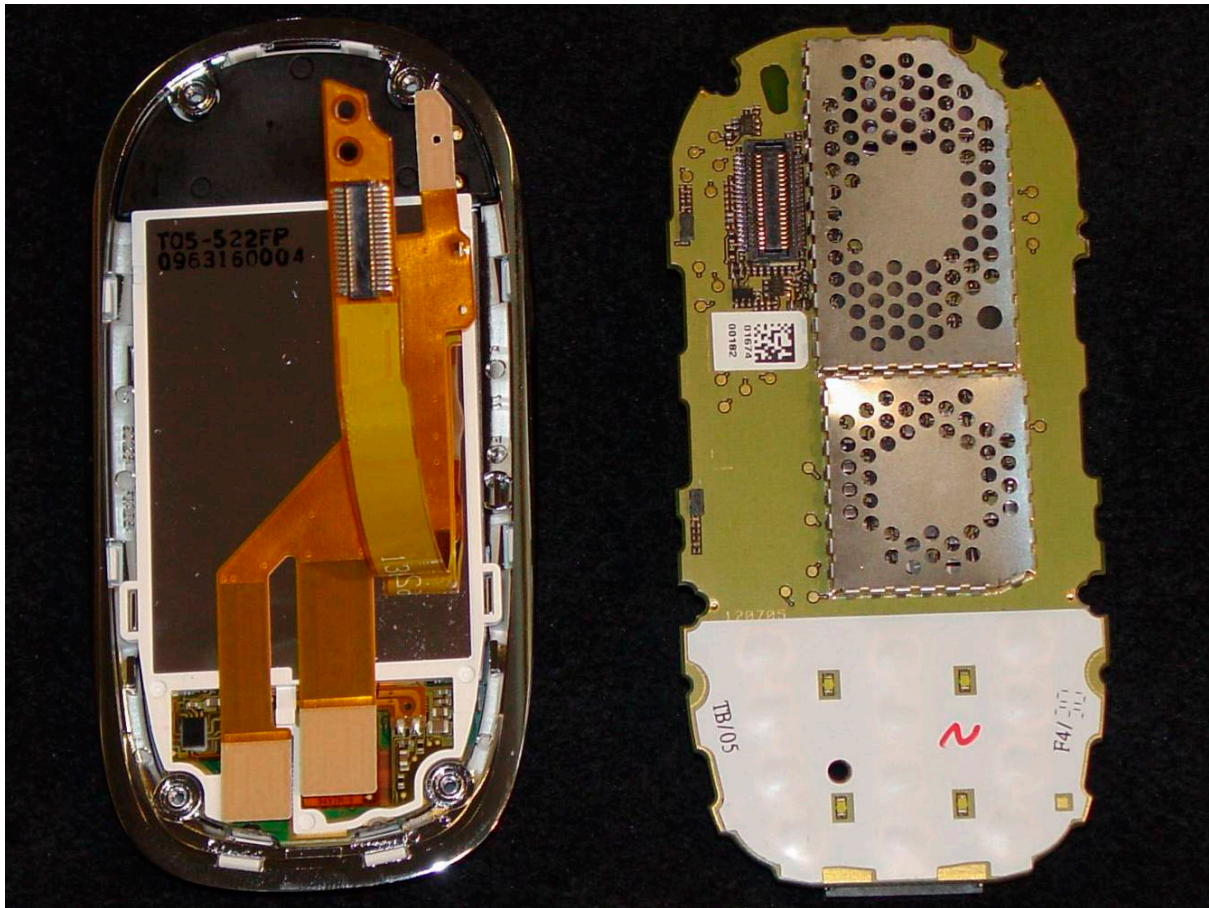
SL75 - Printed Circuit Board, front view with shielding lid removed



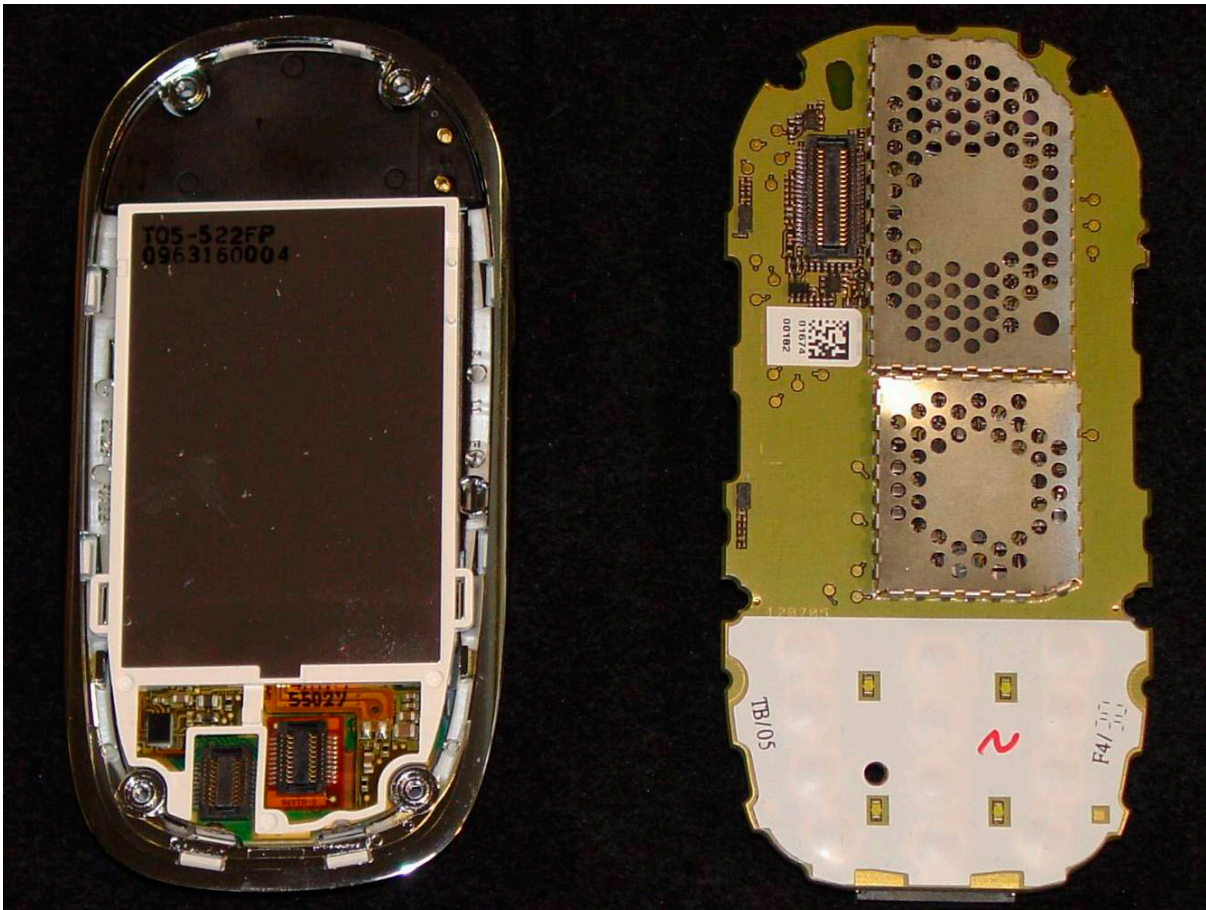
SL75 - Printed Circuit Board, front view, closeup



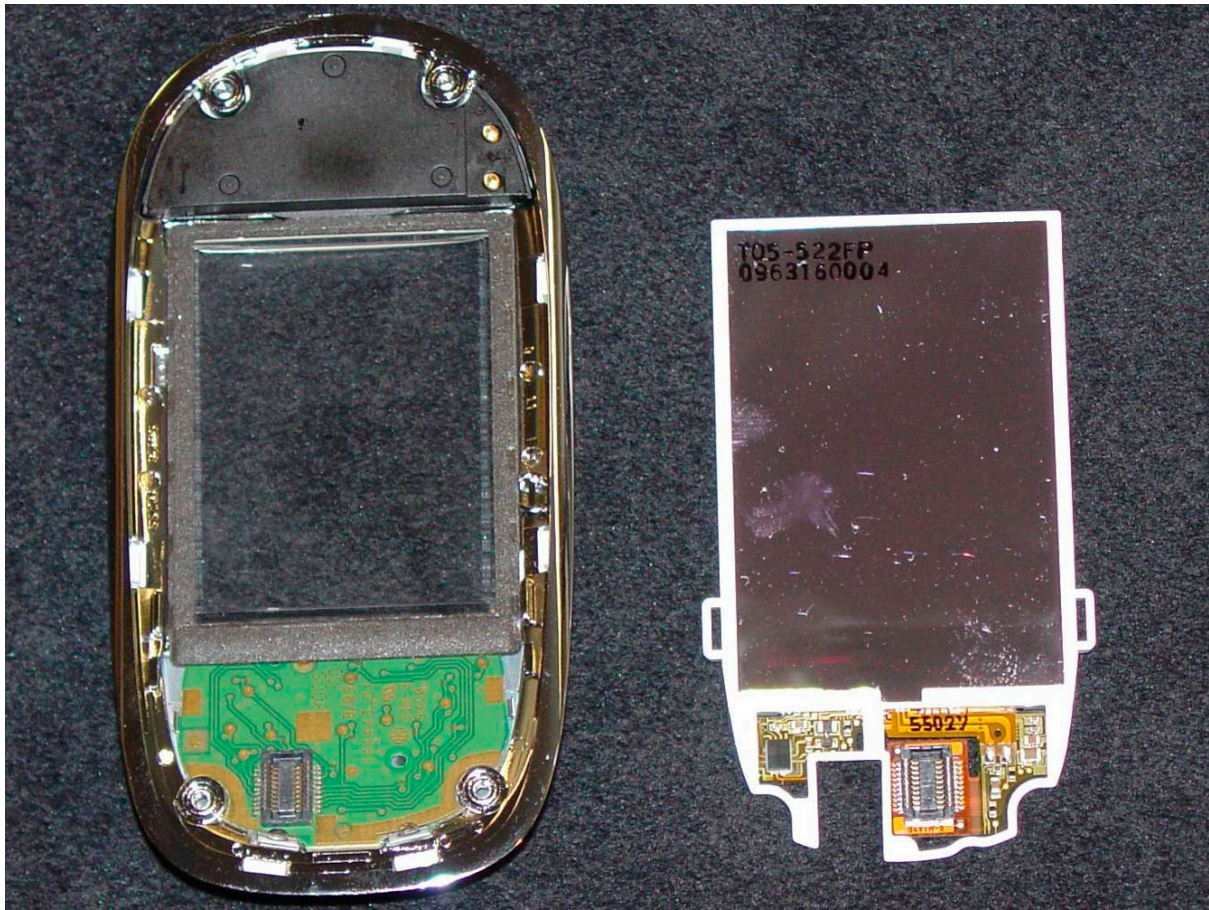
SL75 –Display-conenctor



SL75 – Display-connector with removed slider-mechanics



SL75 – Printed Circuit Board and display-unit with removed flex-cable



SL75 – Upper-Part of slider with display removed, display