

## Tach\_Borax Family Explanation (G0M-1412-4360)

### 1. Family Letter

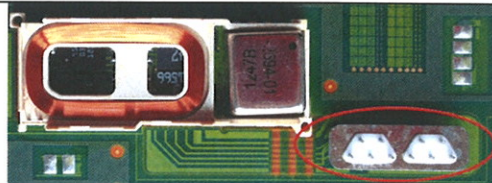
	Product Name	Type	no. of chambers	Connector	max.stored energy	SN
1	Inlexa 1 HF-T	CRT	3	DF-1	40J	
2	Inlexa 1 DR-T	DR	2	DF-1	40J	
3	Inlexa 1 VR-T	VR	1	DF-1	40J	

### 2. Family description

#### 2.1 PC-Board

All family devices are using the same electronic. This means all active and all passive electrical components are the same.

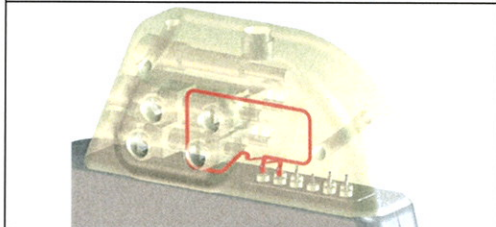
PC Board (4190)  
10pol feedthrough  
Schematic file SCH-0160\_01.pdf



#### 2.2 RF-Antenna

The family members are equipped with the identical RF antenna.

##### DF-1 header with antenna



Signature:

Date: 12/8/2014

Mark Briesemeister  
Junior Manager Regulatory Affairs  
BIOTRONIK SE & Co. KG  
Woermannkehre 1  
12359 Berlin  
Germany

All rights pertaining to this document are exclusively held by BIOTRONIK SE & Co. KG.  
Any non-authorized copying, reproduction or distribution is not permitted.  
Confidentiality: This document and/or its contents are only for internal use.

BIOTRONIK SE & Co. KG  
Woermannkehre 1  
12359 Berlin Germany  
Tel +49 (0) 30 68905-0  
Fax +49 (0) 30 6852804