



Bluetooth Audio Link 2in1 TxRx

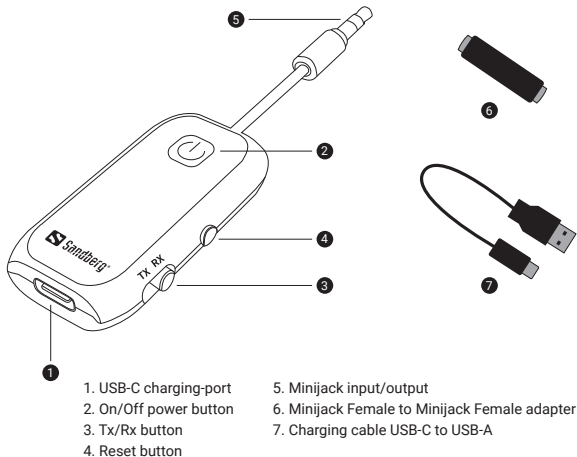
Quick guide

450-12



www.sandberg.world

Product overview



Power button LED overview

Light	Color	Meaning
Blinking	White/orange	Pairing mode
Off after pairing	None	Connected
Blinking x3 /30 sec	Red	Battery low
Constant	Red	Charging
Off when charging	None	Fully charged

Power button functions

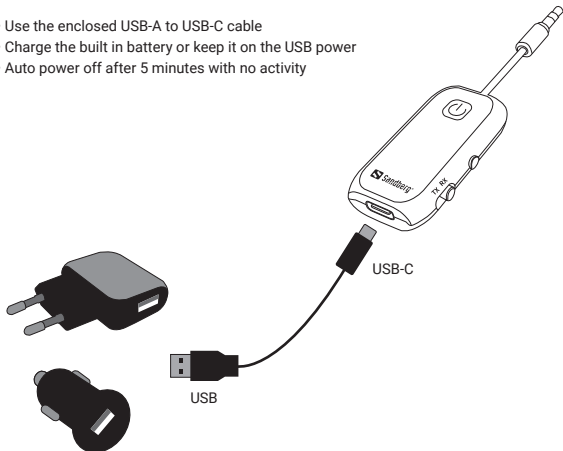
Press	Function
3 sec	ON when OFF

Reset button functions

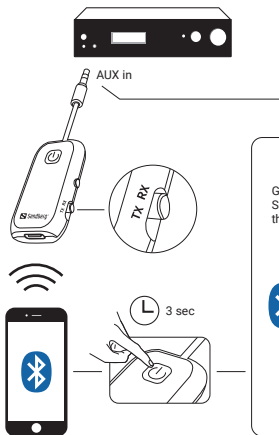
Press	Function
10 sec	Reset pairing

Charging

- Use the enclosed USB-A to USB-C cable
- Charge the built in battery or keep it on the USB power
- Auto power off after 5 minutes with no activity



Set up as a Bluetooth receiver (Rx-mode)



optional adapter

Pairing with Bluetooth device

Go to
Settings/Bluetooth on
the device

Look for
"Sandberg 450-12" to
appear and click for
pairing

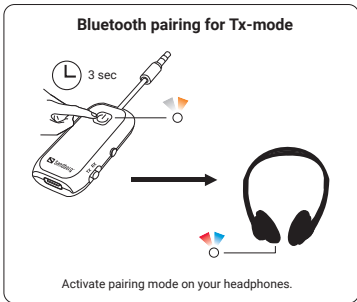
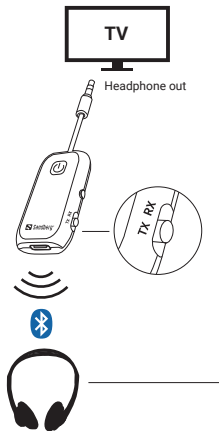


"Sandberg 450-12"



Pairing mode is on for 5 minutes.

Set up as a Bluetooth transmitter (Tx-mode)





Support

<http://helpdesk.sandberg.world>

Warranty

There is a five-year warranty on your Sandberg product.
Please read the warranty terms and register your new
Sandberg product at www.sandberg.world/warranty

5
Years
Warranty



For information on handling electronic waste, see www.sandberg.world/weee

FCC Caution:

This device complies with part 15 of the FCC Rules. Operation is subject to the following two conditions: (1) This device may not cause harmful interference, and (2) this device must accept any interference received, including interference that may cause undesired operation.

Any Changes or modifications not expressly approved by the party responsible for compliance could void the user's authority to operate the equipment.

Note: This equipment has been tested and found to comply with the limits for a Class B digital device, pursuant to part 15 of the FCC Rules. These limits are designed to provide reasonable protection against harmful interference in a residential installation. This equipment generates uses and can radiate radio frequency energy and, if not installed and used in accordance with the instructions, may cause harmful interference to radio communications. However, there is no guarantee that interference will not occur in a particular installation. If this equipment does cause harmful interference to radio or television reception, which can be determined by turning the equipment off and on, the user is encouraged to try to correct the interference by one or more of the following measures:

- Reorient or relocate the receiving antenna.
- Increase the separation between the equipment and receiver.
- Connect the equipment into an outlet on a circuit different from that to which the receiver is connected.
- Consult the dealer or an experienced radio/TV technician for help.

The device has been evaluated to meet general RF exposure requirement. The device can be used in portable exposure condition without restriction.