

Internal Photos

Photo 1

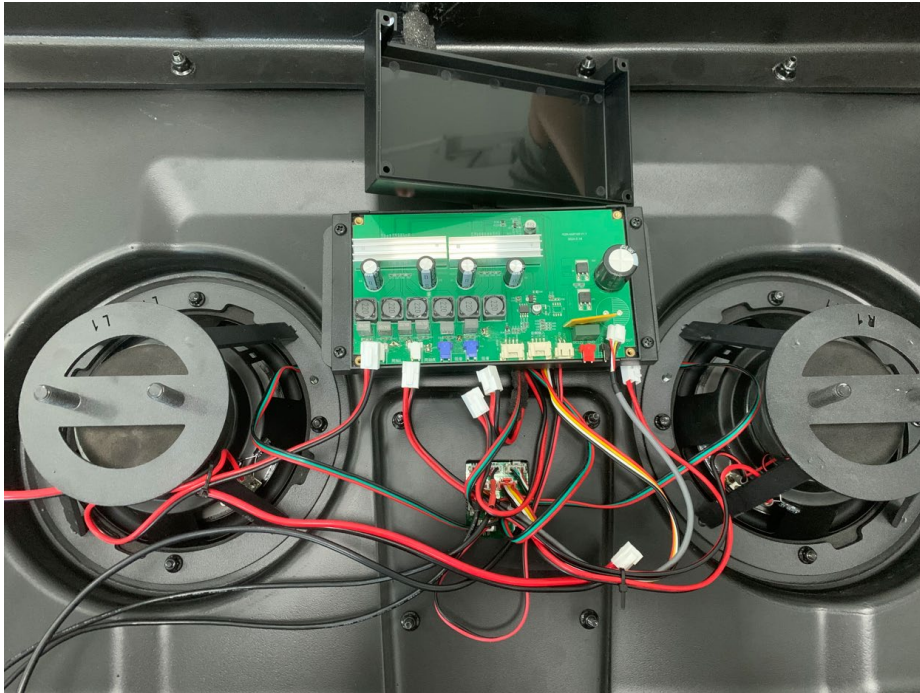


Photo 2

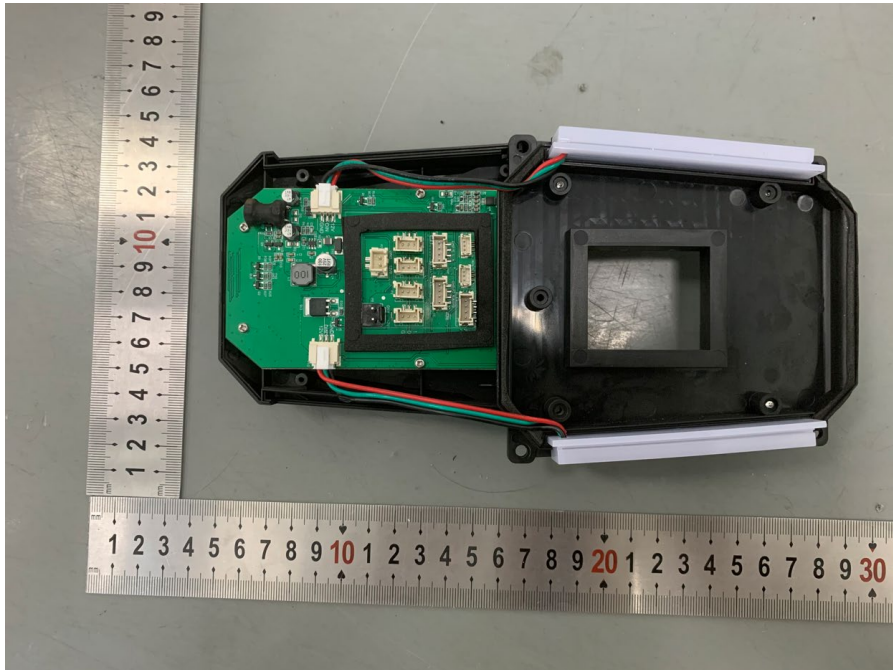


Photo 3

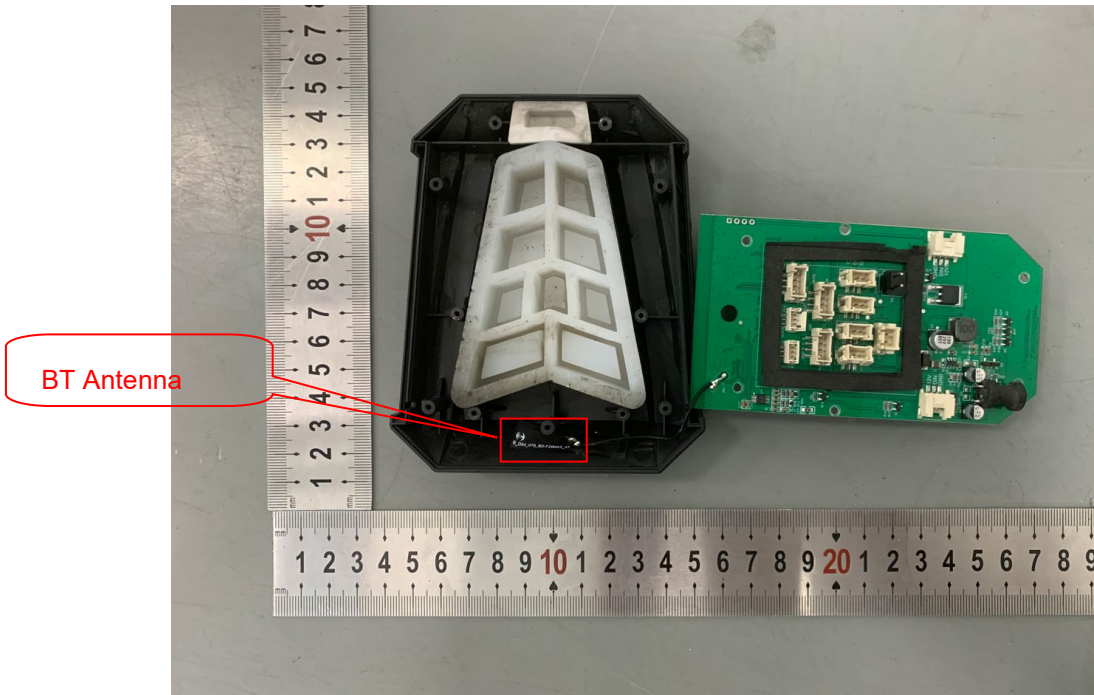


Photo 4

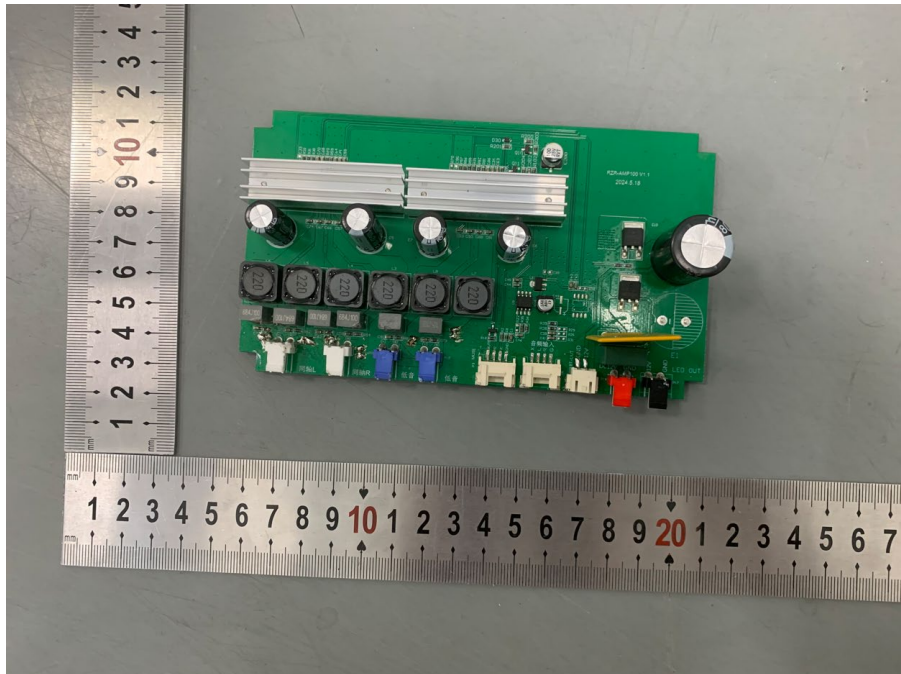


Photo 5

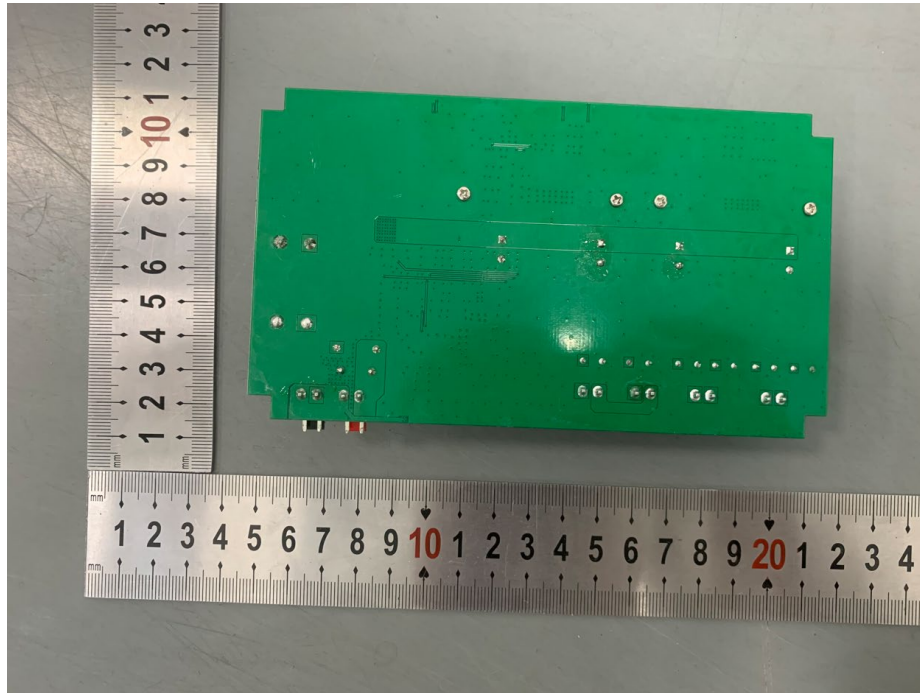


Photo 6

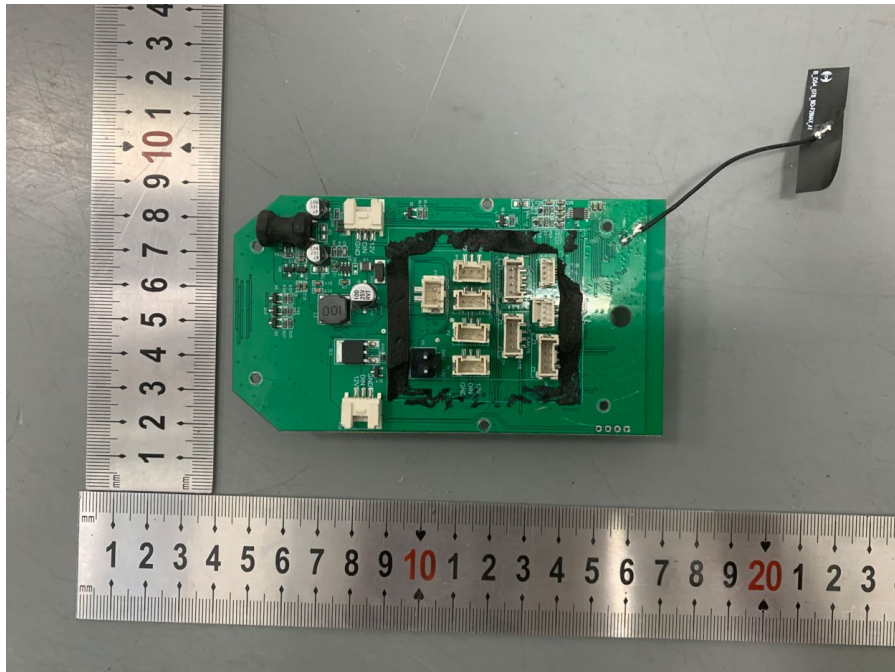


Photo 7

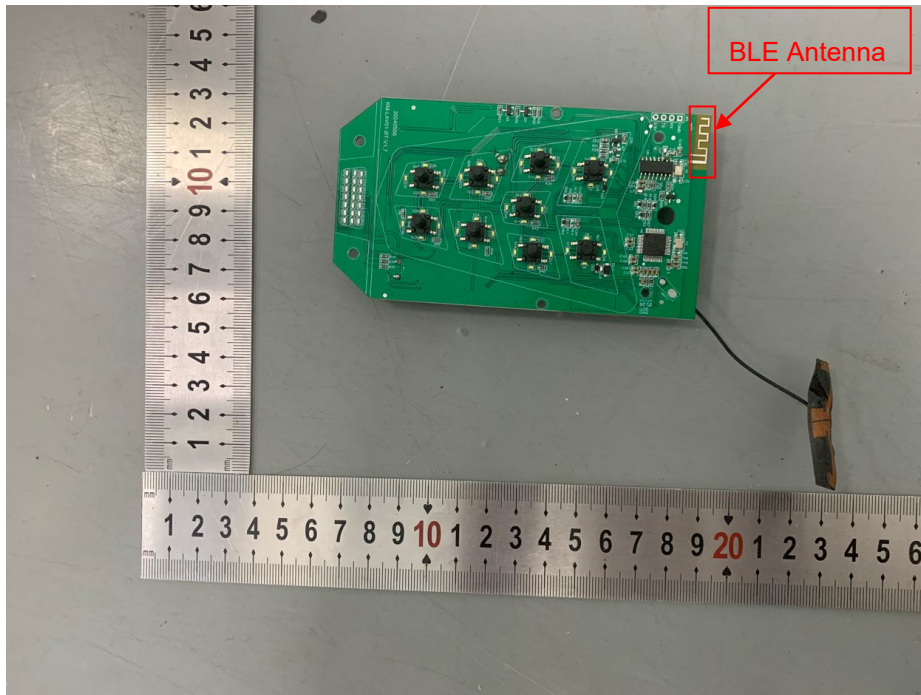
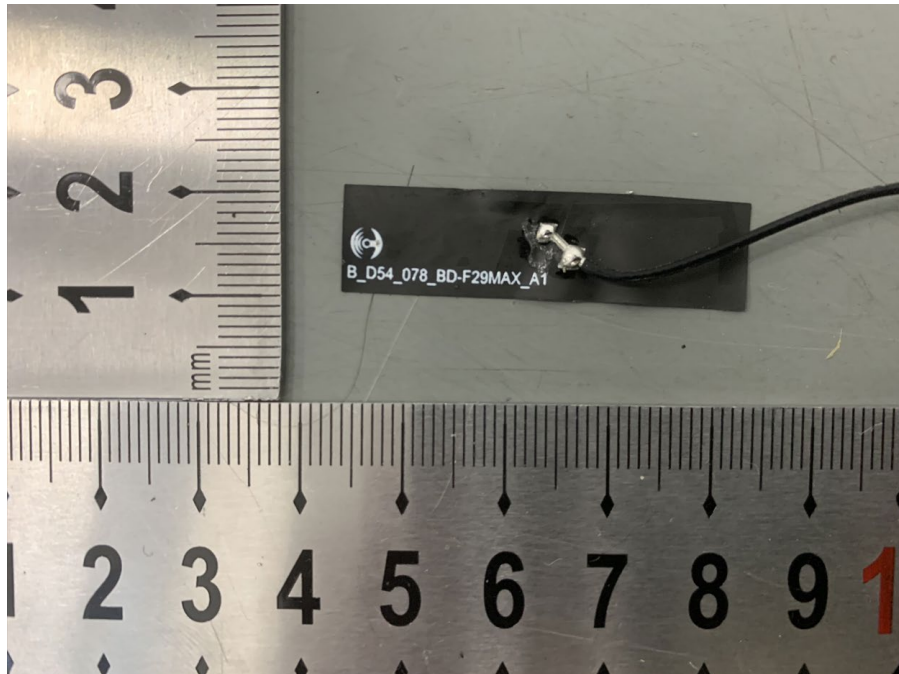


Photo 8



This image shows the bottom of the Raspberry Pi 3B+ PCB. A gold-colored antenna is visible at the top. Below it, the J1 connector is highlighted with a red box, showing pins for GND, RX, TX, and 3.3V. Other components labeled include ANT1, C18, C15, L3, C30, Y1, C29, R54, R56, and C35. A black integrated circuit (IC) is also visible, labeled with 'MS300' and '12518'.

-----End-----