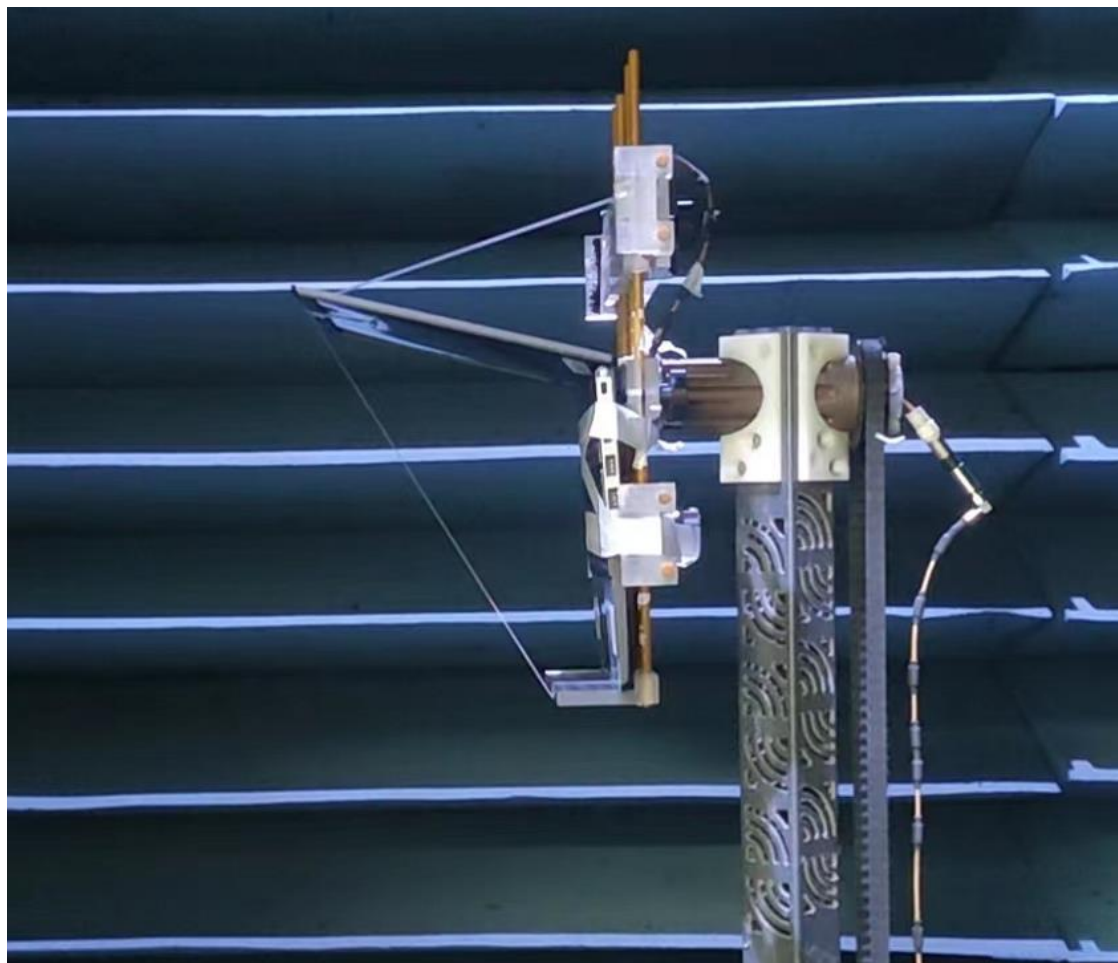


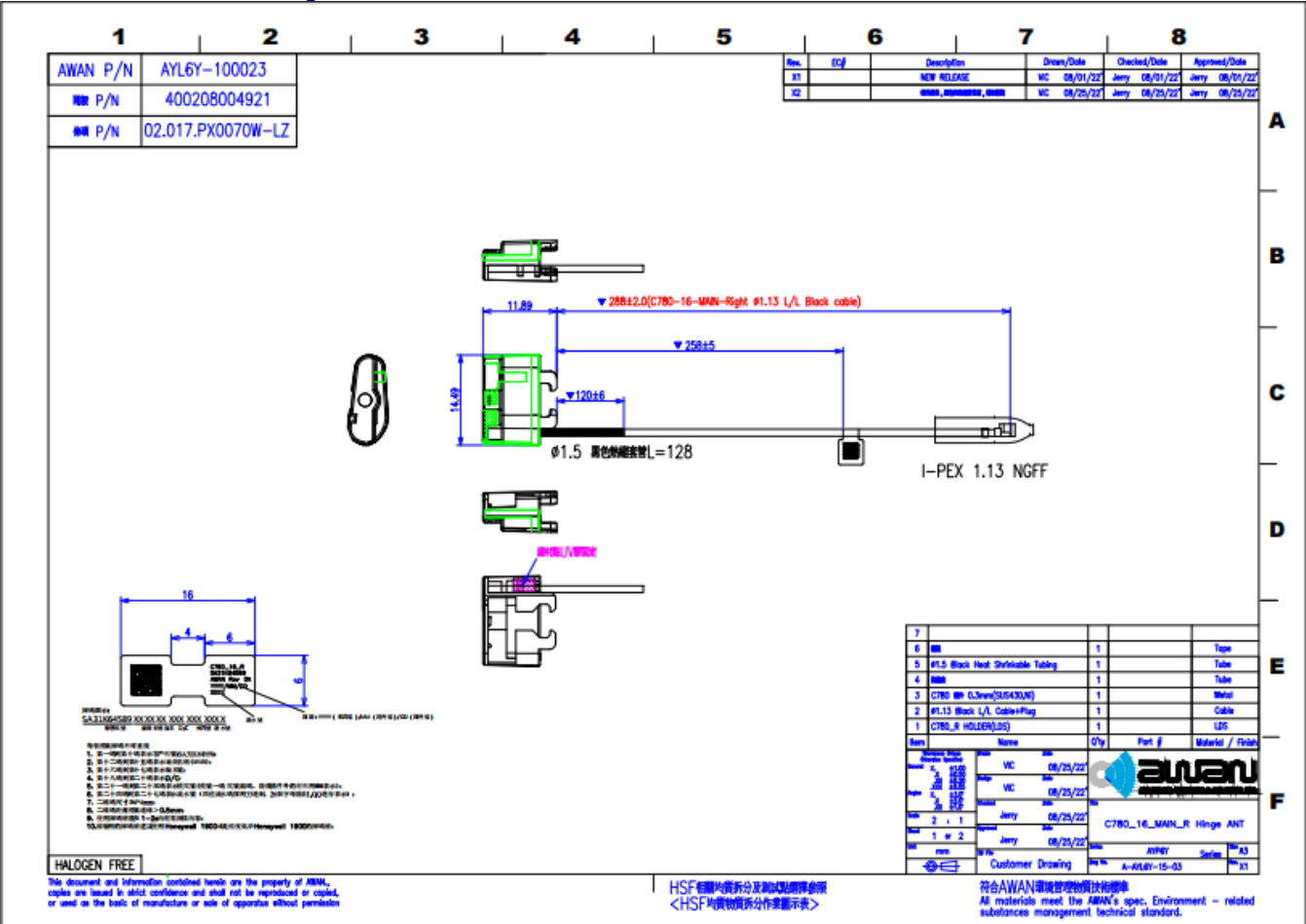
3. Setup photo



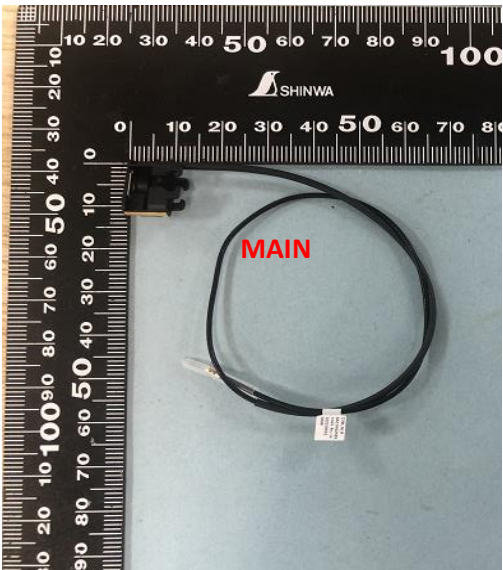
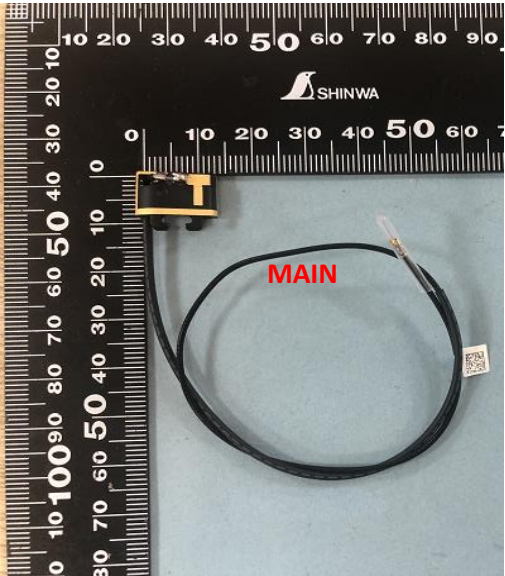
Section 2. Dimensioned Photos and Drawings of Antennas

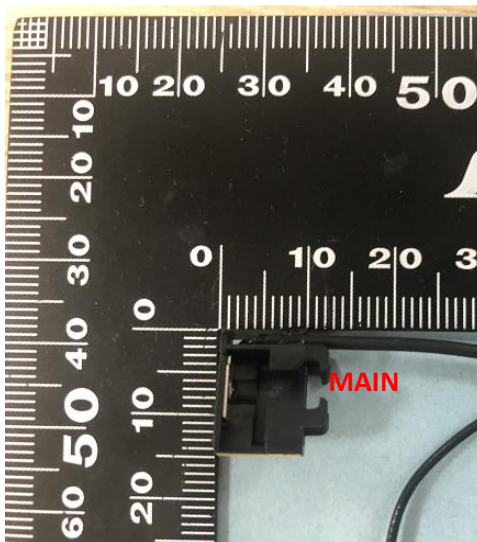
Include the dimensioned photo and drawing of Main antenna here.

Main Antenna Drawing:



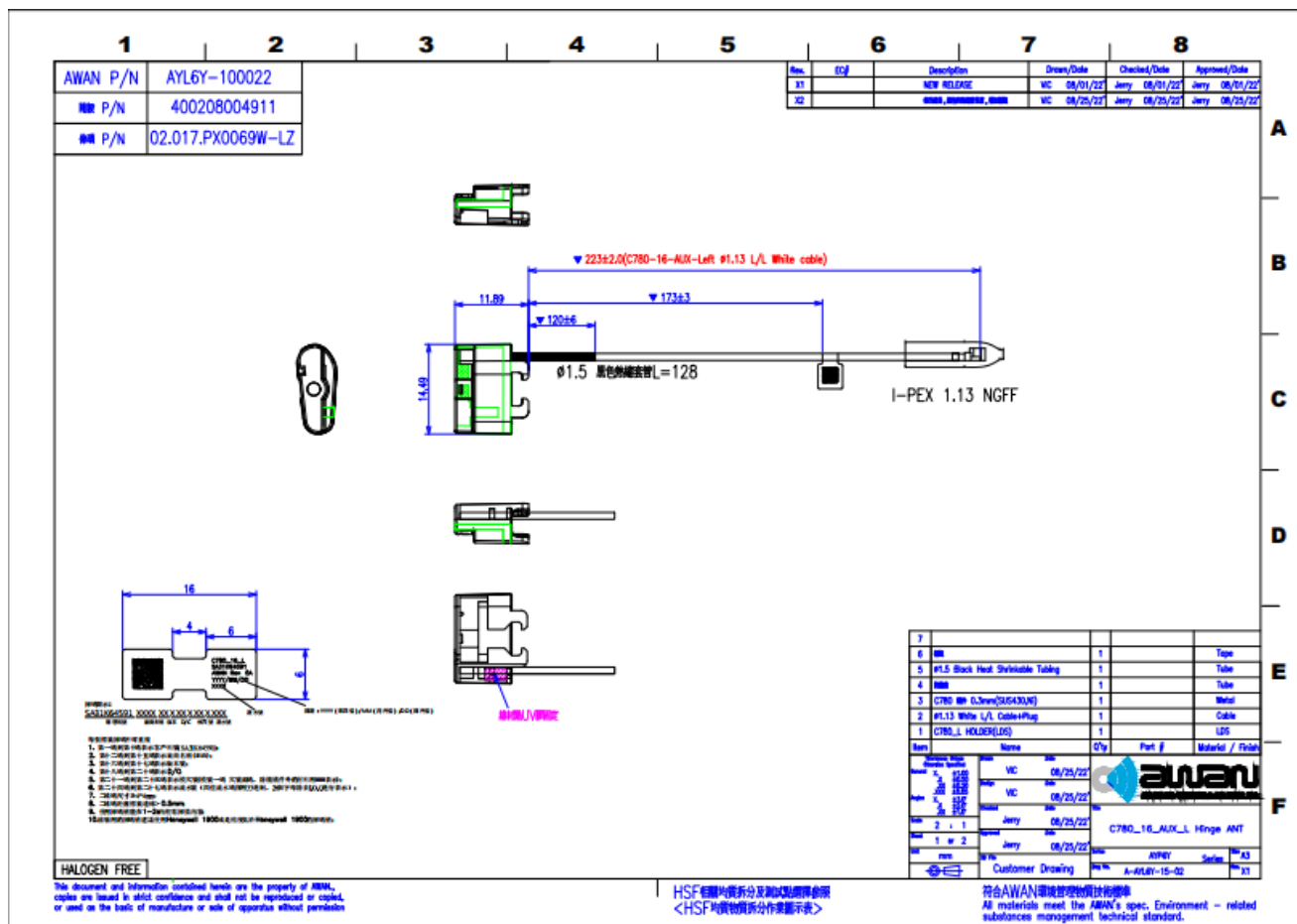
Main Antenna Photo (Front/Back):



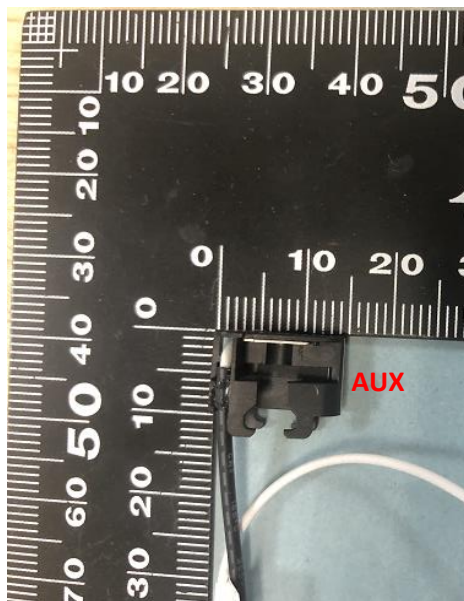
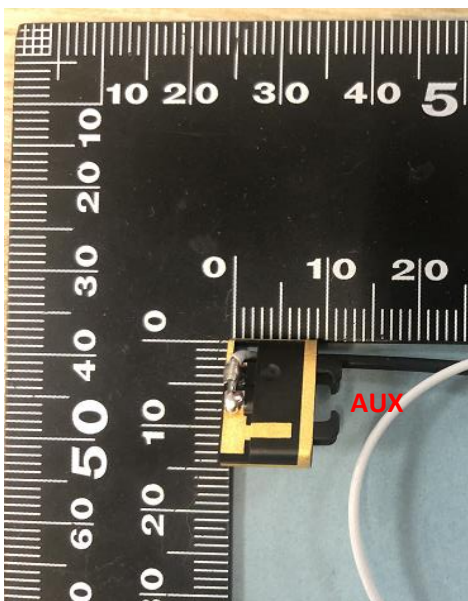


Aux Antenna Dimensioned Drawing:

Include a dimensioned photo and dimensioned drawing of Aux antenna here.



Aux Antenna Photo (Front/Back):



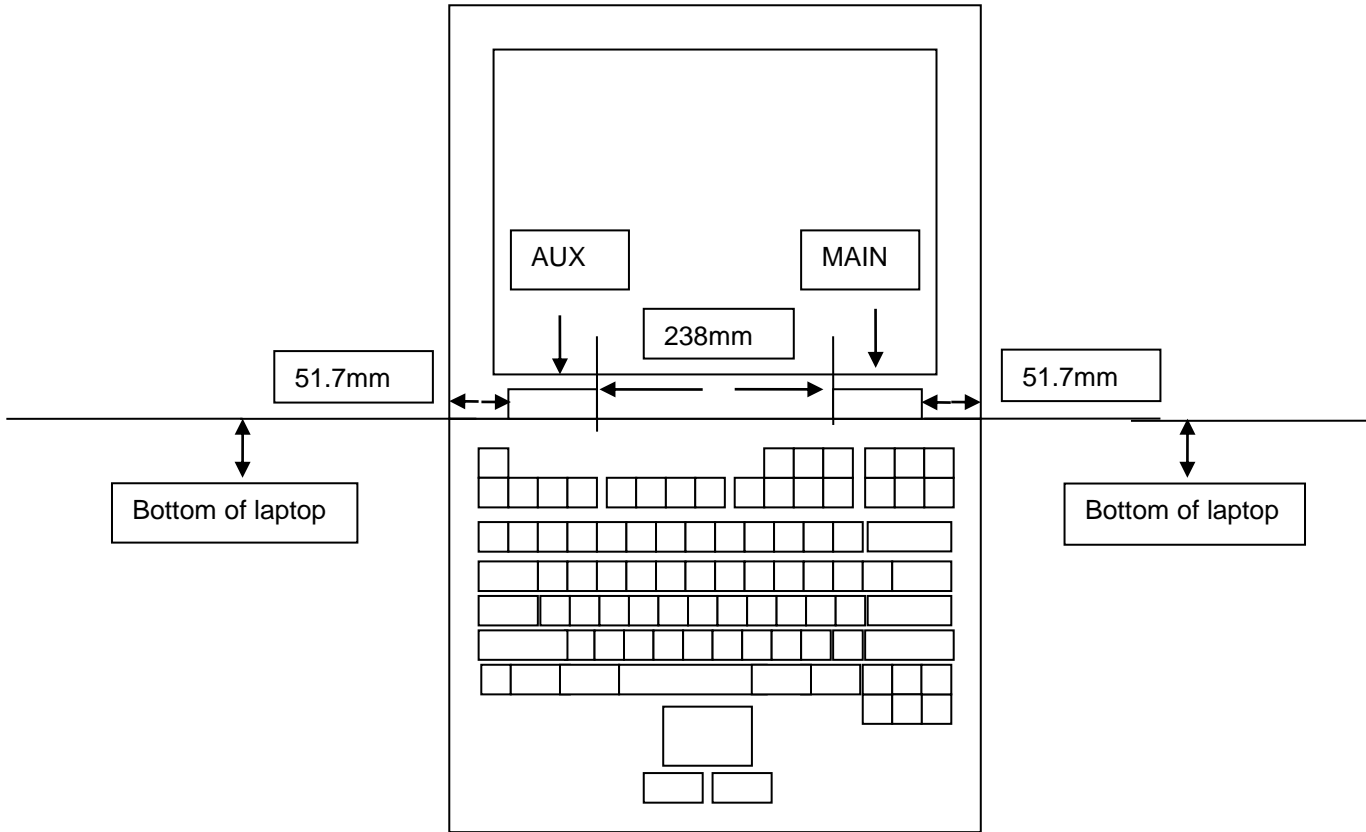
Note: antenna photo should include L type ruler

Section 3. Radiation characteristics of antenna loaded in Host Platform

Section 4. Antenna Host Platform Location Information

Include a **dimensioned photo(s) or dimensioned drawing(s)** of Main and Aux antenna placements (measurements are not required for receive-only antenna).

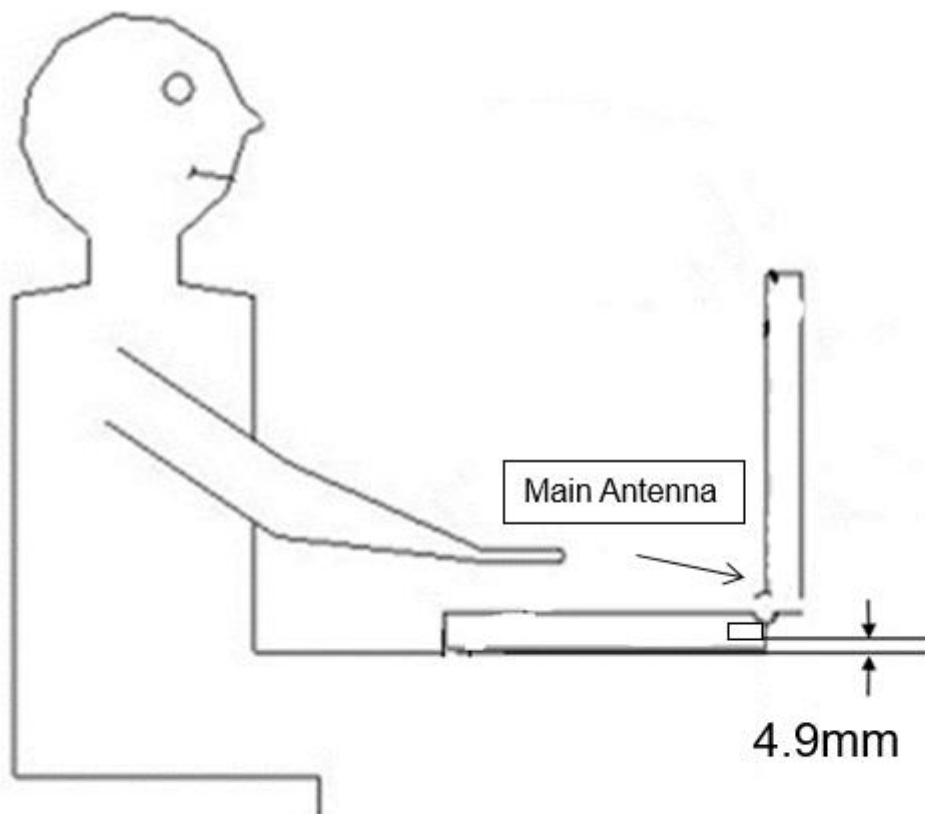
Any antenna that transmits must show dimensions to bottom of laptop. Provide a description of the materials that are used for supporting or surrounding transmit antennas; for example, non-conductive plastics vs. conductive coated plastic or metallic materials.



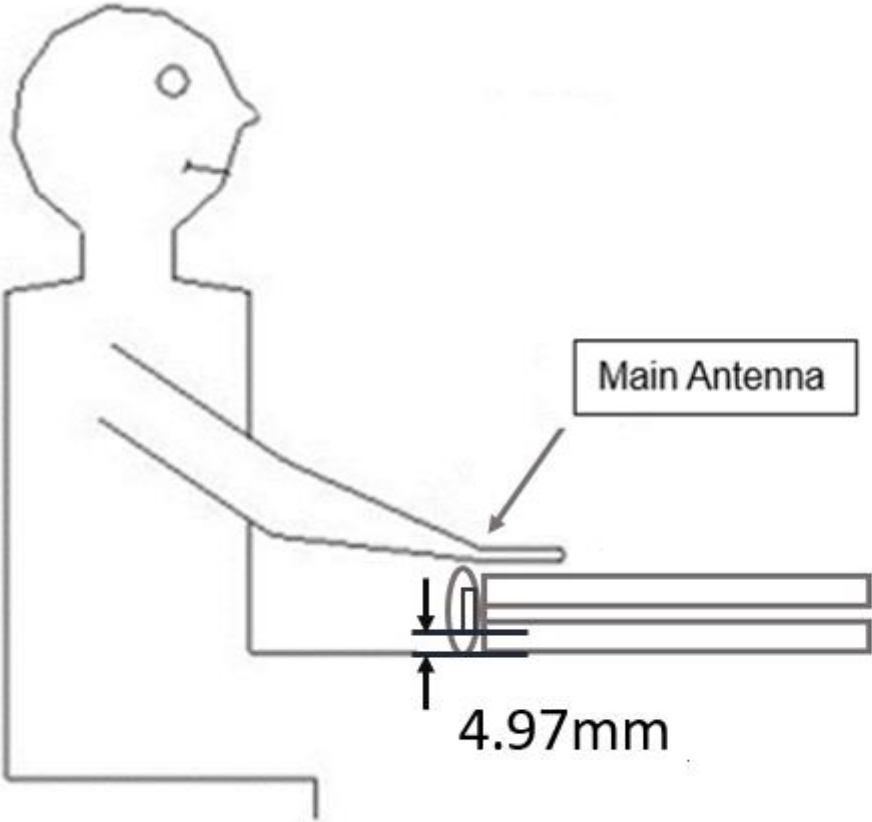
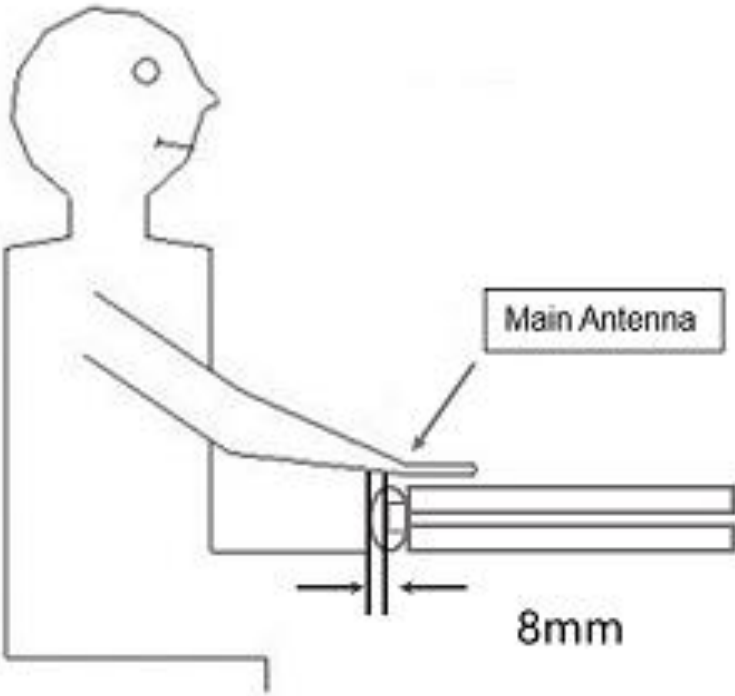
Section 5. Antenna dimensional information for SAR evaluation

Include a **dimensioned photo(s) or dimensioned drawing(s)** showing the distance (mm) between the transmit antennas and the user. For notebook/laptop hosts show lapheld position (example below). For tablet hosts show all orientations including lapheld, primary & secondary portrait, primary & secondary landscape positions. Include a description of any proximity sensors or power throttling implementations that limit or exclude use of any host orientation.

NB Mode Sar dimensioned photo:



PAD Mode Sar dimensioned photo:



Section 6. Diagram Example of Co-Location Antenna Separation

Include a **dimensioned photo or dimensioned drawing** showing the distance (mm) between all WLAN transmit antennas and other co-located radiator transmit antenna such as Bluetooth, WWAN,..

(Note: Due to the evolving rules regarding co-location, each platform will need to be reviewed on a case by case basis)

