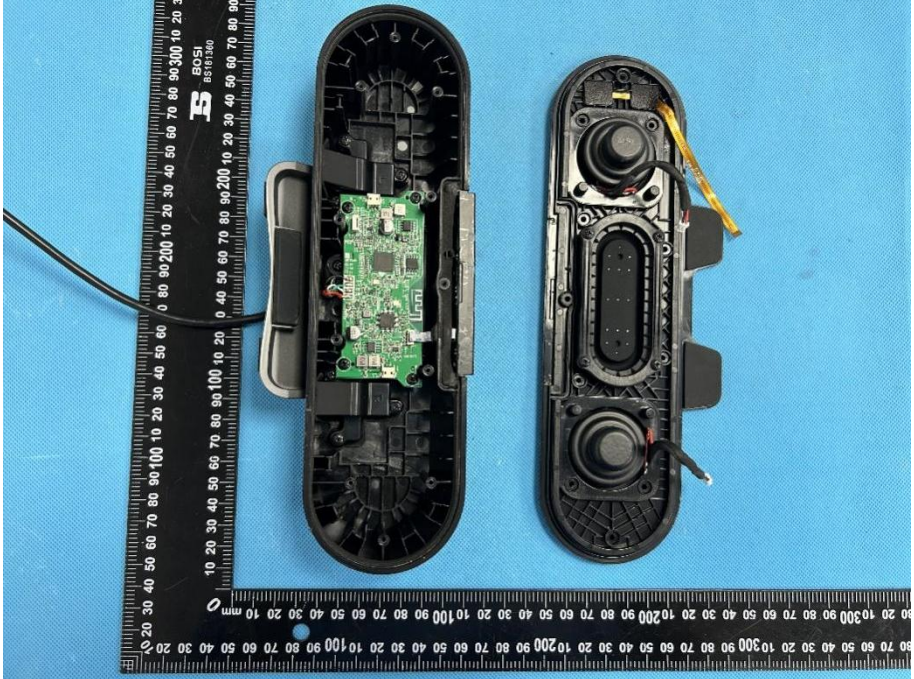
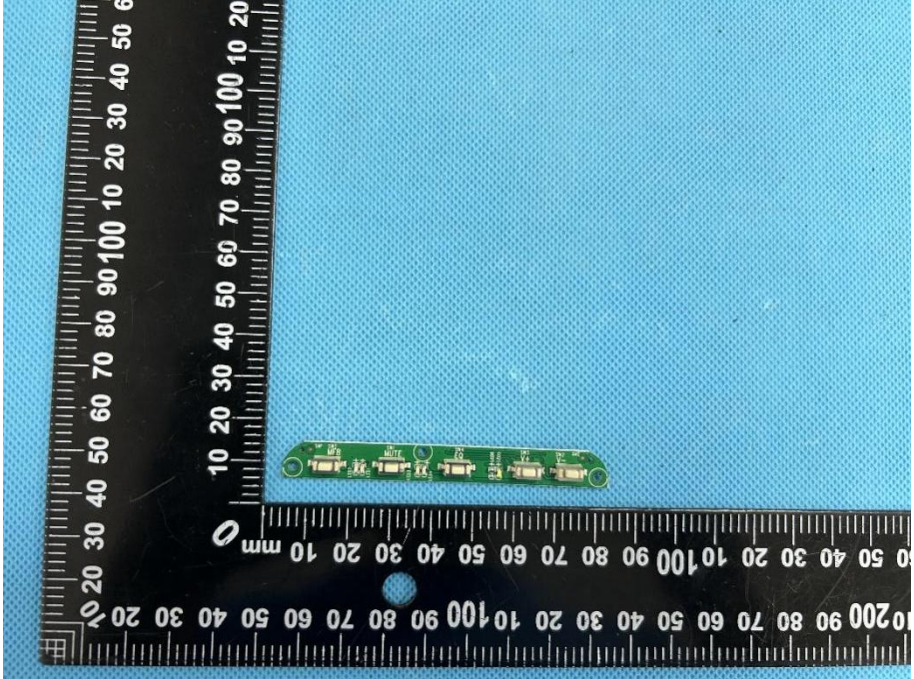
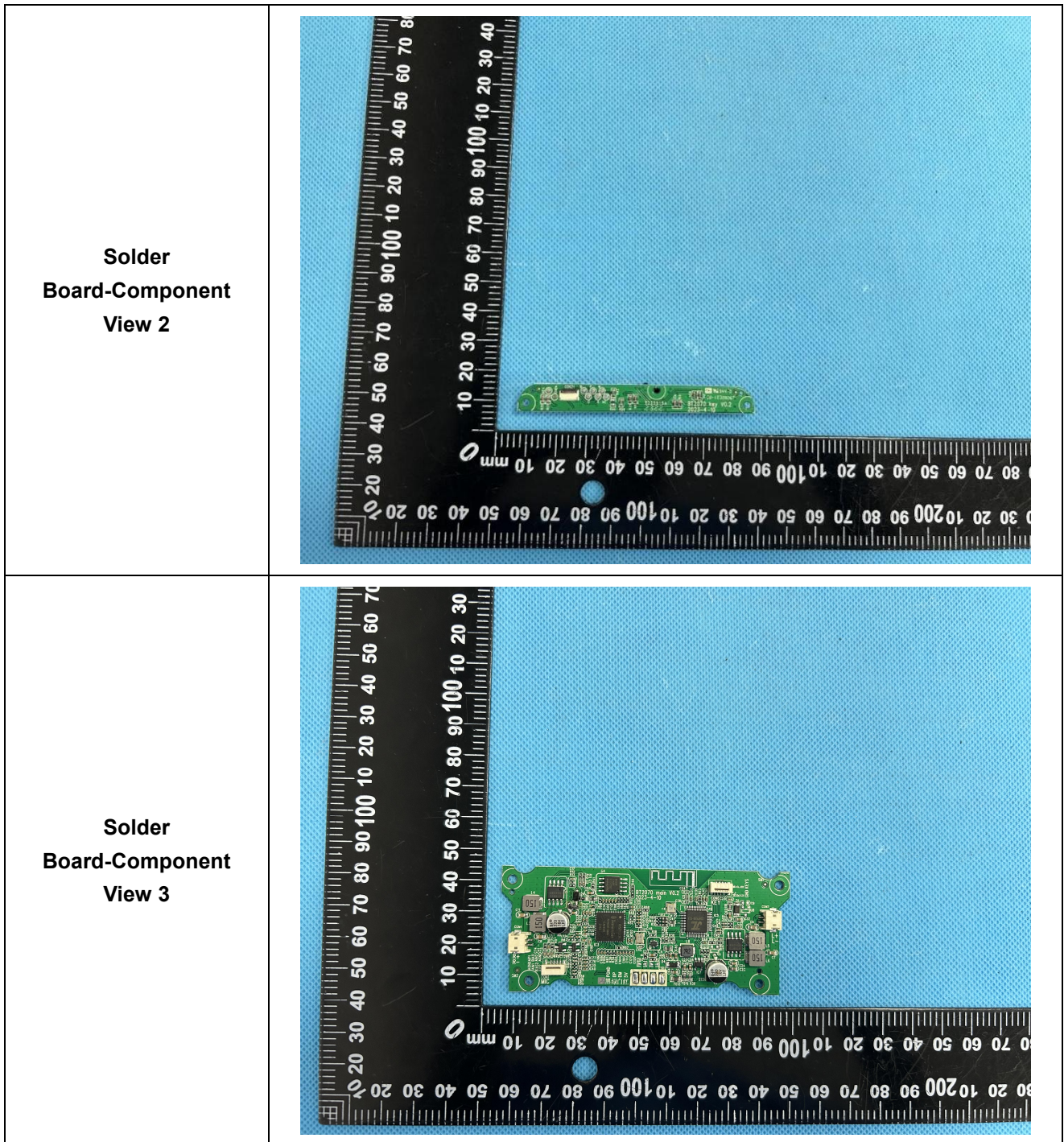
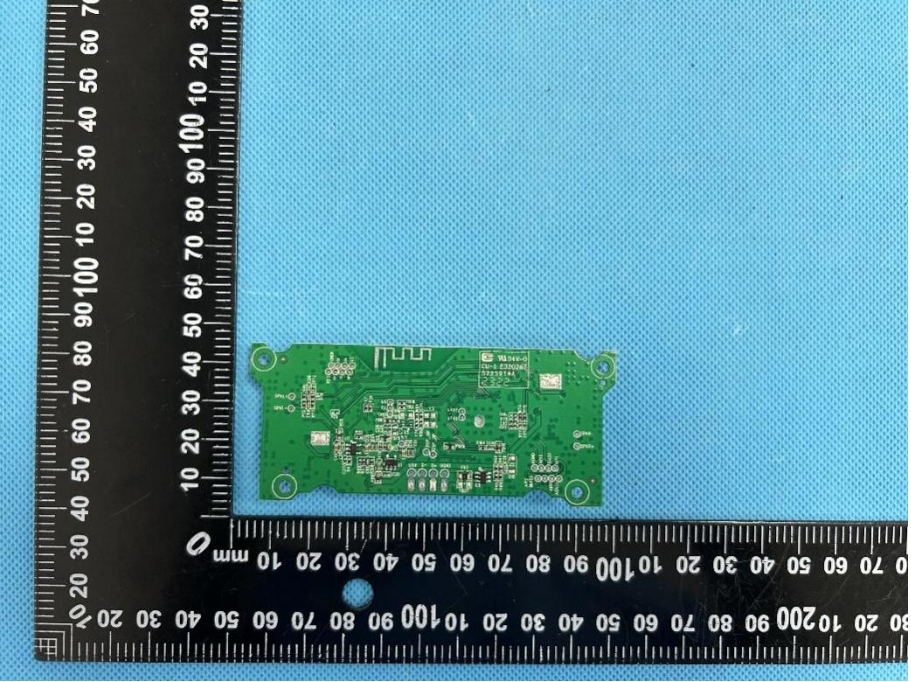
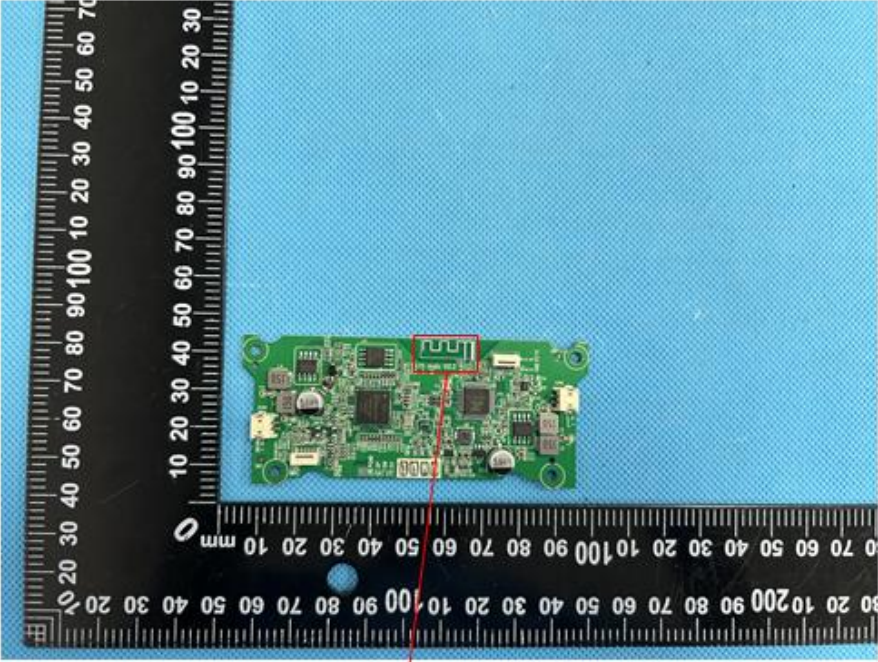


### EXHIBIT 3 - EUT INTERNAL PHOTOGRAPHS

<p><b>EUT Housing and Board View 1</b></p>	 A photograph showing the disassembled EUT housing and internal board. The black plastic housing is split into two halves, with the green printed circuit board (PCB) resting in the left half. The right half of the housing shows internal components like a speaker and a microphone. A black ruler is placed vertically on the left side of the housing for scale. The background is a blue textured surface.
<p><b>Solder Board-Component View 1</b></p>	 A close-up photograph of a small green PCB component. The component is rectangular and has several small electronic components and solder joints on its surface. A black ruler is placed vertically to the left of the component for scale. The background is a blue textured surface.



<p><b>Solder Board-Component View 4</b></p>	 <p>A photograph of a green printed circuit board (PCB) component, likely a solder mask, placed on a blue textured surface. The component is rectangular with several circular mounting holes. It is surrounded by a black L-shaped ruler with white markings in millimeters. The ruler shows the component is approximately 100mm wide and 60mm high.</p>
<p><b>Antenna View</b></p>	 <p>A photograph of the same green PCB component from a different perspective, showing the antenna structure. A red box highlights a specific area on the board, and a red line points from this box to a label 'BT Ant.' located below the image. The ruler and background are the same as in the previous view.</p> <p>BT Ant.</p>