

Basic Manual

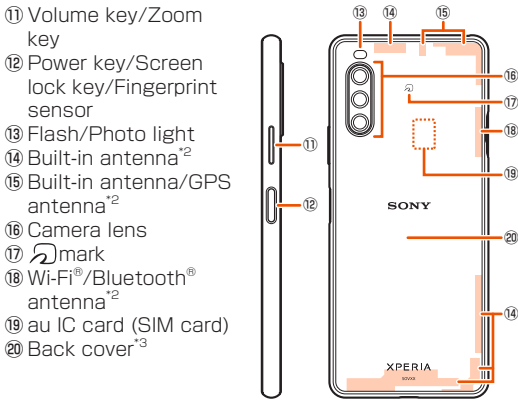
Online Manual (Japanese)

Check "Online Manual" (Japanese) which describes detail explanations on various functions on the product from this procedure.

In the Home screen, slide the screen up → [お客さまサポート (Customer support)] → [取扱説明書 (Online Manual)] (Japanese)

Also, you can check "Online Manual" (Japanese) on the au homepage.
[https://www.au.com/online-manual/sov43/\(Japanese\)](https://www.au.com/online-manual/sov43/(Japanese))

In this manual, the contents on Android 9 are provided. For the latest edition, refer to "取扱説明書 (Basic Manual)" (Japanese) available on the au homepage.
[https://www.au.com/support/service/mobile/guide/manual/\(Japanese\)](https://www.au.com/support/service/mobile/guide/manual/(Japanese))



- *1 Do not jab with a sharp object such as a needle. Doing so may cause a malfunction.
- *2 The antenna is built into the main unit. Covering around the antenna by your hand may affect the quality of call/communication.
- *3 The back cover is not removable. Removing forcibly might cause damage or a malfunction. Also, battery is built into the main unit and not removable by customers.

3 Keep the product horizontal and then push the microSD memory card tray in straight

Pay attention to the direction the tray is being pushed in.

Firmly press where circled ○, and check that there is no gap between the main unit and the microSD memory card/au IC card (SIM card) slot cover.

■ Removing a microSD memory card

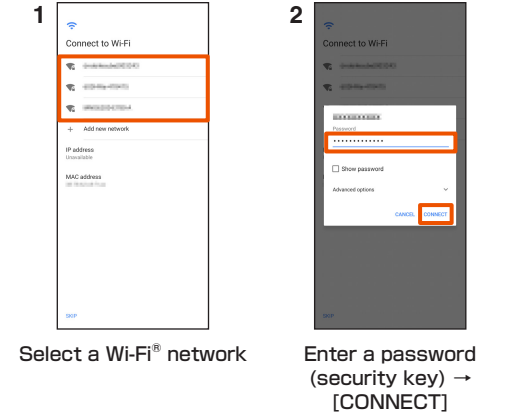
1 Remove the microSD memory card tray from the main unit

Put your fingertip (nail) into the groove of the microSD memory card/au IC card (SIM card) slot and draw the cover straight out.

2 Remove the microSD memory card from the microSD memory card tray

STEP3: Setting wireless LAN (Wi-Fi®) connection

You can use a home wireless LAN (Wi-Fi®) or public wireless LAN to access the Internet services. Set it in a place where the signal of Wi-Fi® network can be received.



Checking the Online Manual

Check "Online Manual" (Japanese) which describes detail explanations on various functions on the product from this procedure.

Also, you can check "Online Manual" (Japanese) on the au homepage.
[https://www.au.com/online-manual/sov43/\(Japanese\)](https://www.au.com/online-manual/sov43/(Japanese))



FCC ID

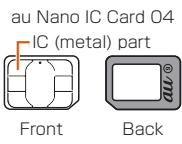
To view the regulatory compliance mark

- Find and tap [Settings] → [About phone] → [Certificates]

Regulatory compliance mark such as FCC ID is displayed on the screen.

au IC card (SIM card)

Your phone number etc. is recorded in au IC card (SIM card). The product is compatible with au Nano IC Card O4.



Notification LED

The Notification LED prompts charging, or informs battery level while charging, missed calls, new mails, etc. by turning on or flashing.

| LED Status | Description |
|------------|---|
| Red | The battery is charging when the remaining battery level is 14% or lower. |
| Orange | The battery is charging when the remaining battery level is 15% - 89%. |

3 Keep the product horizontal and then push the microSD memory card tray in straight

Pay attention to the direction the tray is being pushed in.

Firmly press where circled ○, and check that there is no gap between the main unit and the microSD memory card/au IC card (SIM card) slot cover (▶P.14).

Charging

When you purchase your product, the internal battery is not fully charged. Charge the battery before use.

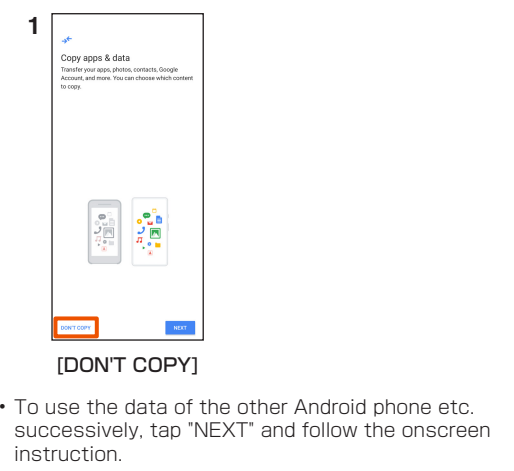
- ❖Information
- When charging starts, the Notification LED of the product lights according to the battery level. To check the battery level, see the status bar in the top of the screen, or in the Home screen, slide the screen up → [Settings] → [Battery].
 - If you start charging with the product turned off, a screen launches indicating the charging status but operations are not available. Thus, do not charge the product in a place where the use is prohibited.
 - The charging time may take longer when charging with a PC or while using the camera function.

■ Charging with the AC Adapter

Charging with connecting TypeC Common AC Adapter O2 (sold separately) is explained.

1 Insert the power plug of TypeC Common AC Adapter O2 (sold separately) into an outlet

STEP4: Copy apps & data



Preface

Thank you for buying "Xperia" (simply called "the product" or "main unit" from here on). Before using the product, read "Basic Manual" (this manual) and "Cautions on using the product" for proper handling.

About Operating Instructions

- "Basic Manual" (this manual)
Handles only basic operations for main features.
- "Online Manual" (Japanese)
Check "Online Manual" (Japanese) which describes detail explanations on various functions on the product from this procedure. For details on checking, see "Checking the Online Manual" in this manual.
- "取扱説明書 (Full Instruction Manual)" (Japanese)
For detailed descriptions on various functions, you can refer to the "取扱説明書 (詳細版) (Full Instruction Manual)" (Japanese) available on the au homepage.
[https://www.au.com/support/service/mobile/guide/manual/\(Japanese\)](https://www.au.com/support/service/mobile/guide/manual/(Japanese))



| LED Status | Description |
|-----------------------------|--|
| Green | The battery is charging when the remaining battery level is 90% or higher. |
| Flashing red | The remaining battery level is 14% or lower. |
| Flashing white ¹ | Indicates a missed call, new au-mail, new message, etc. |

*1 Flashes in sleep mode.

Attaching/removing au IC card (SIM card)

Before attaching/removing au IC card (SIM card), make sure to turn off the product.

■ Attaching au IC card (SIM card)

1 Remove the microSD memory card tray from the main unit

Put your fingertip (nail) into the groove of the microSD memory card/au IC card (SIM card) slot and draw the cover straight out.

2 Insert the USB Type-C plug of TypeC Common AC Adapter O2 (sold separately) into the USB Type-C connection terminal of the product straight

When charging is started with the product powered on, the start sound for charging sounds and the Notification LED of the product lights.

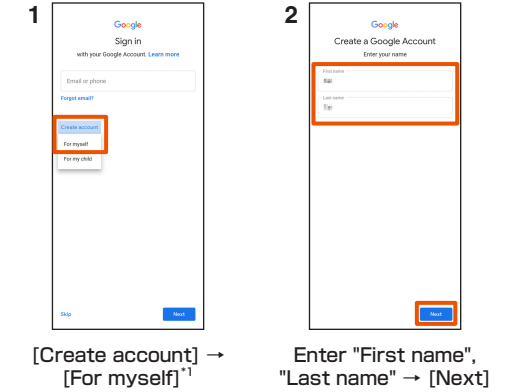
3 When charging is complete, remove the USB Type-C plug of TypeC Common AC Adapter O2 (sold separately) from the product

4 Remove the power plug of TypeC Common AC Adapter O2 (sold separately) from the outlet

STEP5: Setting up a Google account

Set up a Google account to synchronize with Gmail, contacts of online service, calendar, etc. Setting for creating a new Google account is explained here.

- If you set up a Google account, you can use Google apps such as "Gmail" or "Google Play".
- Although you can use the product without setting of a Google account, some apps using it cannot be used. When you activate the app, the setup screen for a Google account appears.



■ For Those Requiring an English Instruction Manual

Download URL:
<https://www.au.com/english/support/manual/>

Regarding notations used in this document

- In this manual, operations of tapping menu items/icons/buttons on the screen, etc. are indicated as [name of the item, etc.].
- In this manual, screens and operations for the product with au Nano IC Card O4 attached are described.
- Screen illustrations shown in this manual may look different from the actual screens. In some cases, minor details or a part of a screen may be omitted.
- In this manual, "Basic Manual" (this manual), "Cautions on using the product" and "取扱説明書 (詳細版) (Full instruction manual)" (Japanese) are collectively referred to as "Instruction Manual".
- In this manual, explanations for the wallpaper "Black" are provided.
- In this manual, operations in portrait view are described as a standard. In horizontal view, menu items, icons, buttons on the screen, etc. may differ.
- In this manual, "au Nano IC Card O4" is abbreviated as "au IC card (SIM card)".

- In this manual, "microSD™" memory card (commercially available), "microSDHC™" memory card (commercially available) and "microSDXC™" memory card (commercially available) are abbreviated as "microSD memory card".
- All of the indicated amounts exclude tax unless otherwise specified.
- Company names and product names referred to in this manual are trademarks or registered trademarks of respective companies. The TM and ® marks may be omitted in this manual.
- "The Company" as appears in the manual refers to these companies:
Sold by: KDDI CORPORATION, OKINAWA CELLULAR TELEPHONE COMPANY
Manufactured by: Sony Mobile Communications Inc.

4 Keep the product horizontal and then push the au IC card (SIM card) tray in straight all the way

Pay attention to the direction the tray is being pushed in.

5 Push the microSD memory card tray in straight

Pay attention to the direction the tray is being pushed in.

Firmly press where circled ○, and check that there is no gap between the main unit and the microSD memory card/au IC card (SIM card) slot cover.

Locking the screen/Unlocking screen lock

- Locking the screen
- Turn off the screen to set sleep mode to prevent the touch panel or key from operating mistakenly or lock the screen.
- 1 While the screen is displayed, press Power key
- Unlocking screen lock
- The lock screen appears when turning the power on or sleep mode is canceled by pressing Power key.
- 1 On the lock screen, swipe (flick) the screen up
- ❖Information
- In the lock screen, swipe (flick) "🔒" or "📷" to use Google Assistant or Camera.

Packaged items

Before your start using the product, make sure that you have all these packaged items with the product.

- Xperia
- Open-ear stereo headset (complimentary sample)
- Open-ear stereo headset (complimentary sample) manual
- 取扱説明書 (Basic Manual) (Japanese)
- ご利用にあたっての注意事項 (Cautions on using the product)(Japanese)
- microSD memory card/au IC card (SIM card) slot
- Front camera
- Earpiece/Speaker
- Proximity/Light sensor: Switches the touch panel on and off to prevent from erroneous operation during a call/ Auto-control for display brightness.
- Notification LED (▶P.8)
- Display (Touch panel)
- Mouthpiece/Microphone¹
- USB Type-C connection terminal

These items are not included in the package.

- microSD memory card
- USB Type-C™ cable
- AC adapter

■ Removing au IC card (SIM card)

1 Remove the microSD memory card tray from the main unit

Put your fingertip (nail) into the groove of the microSD memory card/au IC card (SIM card) slot and draw the cover straight out.

2 Remove the au IC card (SIM card) tray from the main unit

Put your fingertip (nail) on the catch of the tray and draw it straight out.

3 Remove the au IC card (SIM card) from the au IC card (SIM card) tray

4 Keep the product horizontal and then push the au IC card (SIM card) tray in straight all the way

Pay attention to the direction the tray is being pushed in.

5 Push the microSD memory card tray in straight

Pay attention to the direction the tray is being pushed in.

Firmly press where circled ○, and check that there is no gap between the main unit and the microSD memory card/au IC card (SIM card) slot cover (▶P.11).

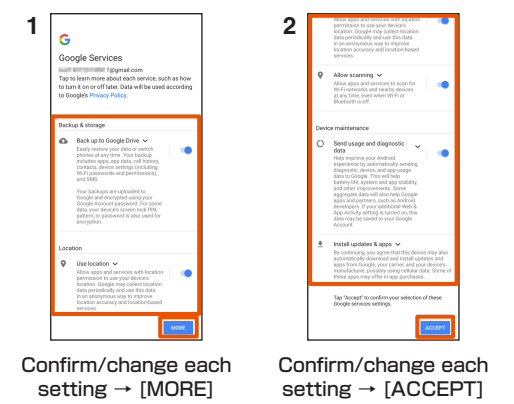
Initial settings

When "ようこそ (Welcome)" appears after the product is powered on, follow the onscreen instructions to set functions and services.

STEP1: Start of setting

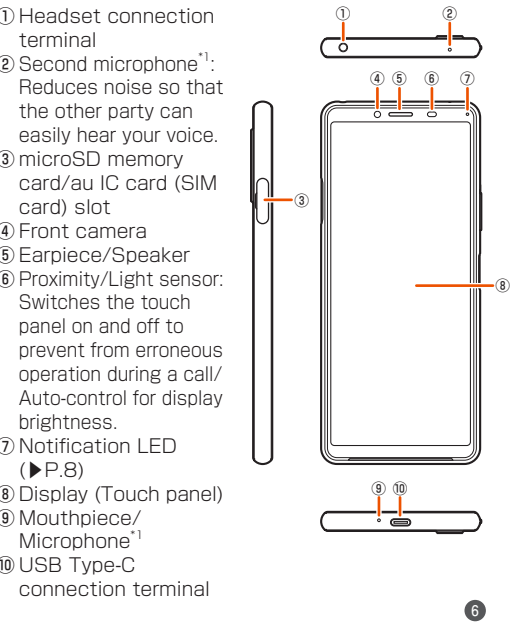


STEP6: Setting Google services



Getting Ready

Names and functions of parts



Attaching/Removing a microSD memory card

Before attaching/removing microSD memory card, make sure to turn off the product.

■ Attaching a microSD memory card

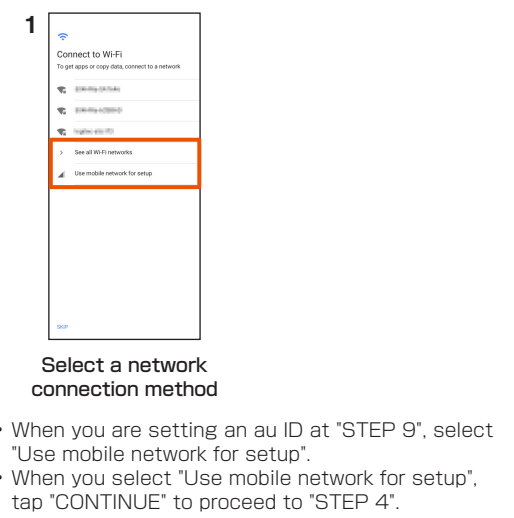
1 Remove the microSD memory card tray from the main unit

Put your fingertip (nail) into the groove of the microSD memory card/au IC card (SIM card) slot and draw the cover straight out.

2 Set a microSD memory card into the microSD memory card tray with the terminal side facing up

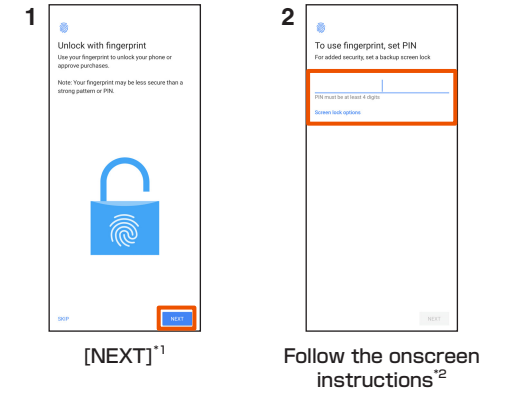
Surely set a microSD memory card into the tray not to come off.

STEP2: Setting up the network connection

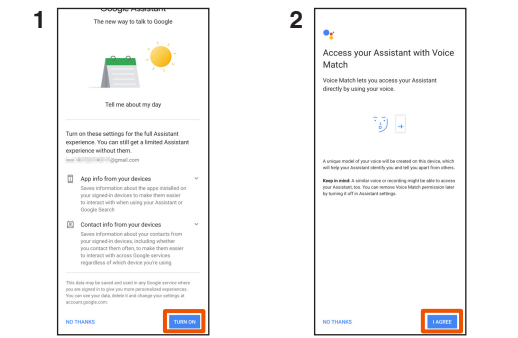


STEP7: Setting the unlock method of using fingerprint

Set whether to use the fingerprint authentication function. Before registering a fingerprint, set the screen lock unlock method.



STEP8: Setting up Google Assistant



[MORE] → [TURN ON]^{*1} [NEXT] → [I AGREE] → Follow the onscreen instruction

*1 To not set, tap "NO THANKS".

- If Google account is not set, the setting of Google Assistant is not displayed.
- When a settings screen for Google Pay appears, follow the onscreen instructions.

STEP9: Setting an au ID

By setting au ID, you can use various services provided by au such as auスマートパス (au Smart Pass) or "au Kantan Kessai (Easy Payment)", which allows you to do things such as purchase apps from Google Play.



Confirm contents^{*1} → Checkmark "au Terms of Service" → [SIGN IN]^{*2} Enter PIN number^{*3} → [次へ (Next)]



Enter a password → [同意して次へ (Agree, and next)]

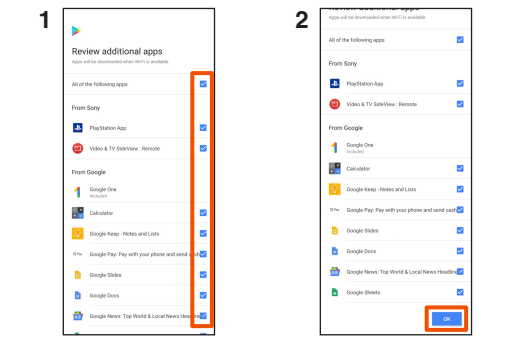
- Alternatively, after the initial setting, in the Home screen, slide the screen up → [Settings] → [au Settings] → [au ID].
- Tap "au Terms of Service" and check the information.
- If you have already been registered au ID, step 2 and 3 do not appear. Proceed to step 4.
- Sign-in is not possible if connected to Wi-Fi*. Tap "SKIP" and proceed to "STEP 10".
- PIN number is a four digit number chosen by the customer and noted on the application form.

STEP10: Setting au Apps being added



Mark apps to install → [Next]

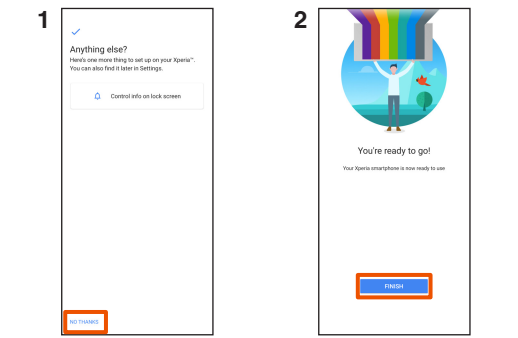
STEP11: Setting up additional apps



Unmark apps not to add^{*1} [OK]

*1 Tap an item to open an app introduction.

STEP12: Setting up more things



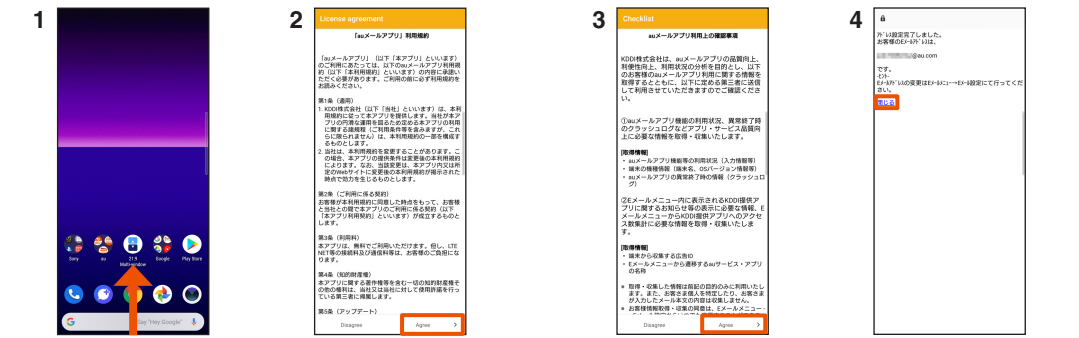
*1 To make other settings, tap items you want to set, and follow the onscreen instructions.

- The screen for setting more things does not appear if you do not set the fingerprint authentication or screen lock unlock method.
- Tap "FINISH" to complete initial settings.
- Downloading of the applications selected in "STEP 10" "STEP 11" starts when the product is connected to Wi-Fi*.

au-mail setting

- To use au-mail, subscription to LTE NET is required. If you did not subscribe it when you purchased the product, contact an au shop or Customer Service Center.
- Perform the initial settings in a place with good signal condition in Japan. If you perform in a place with bad signal condition or while moving, the settings may fail. The initial setting cannot be made via Wi-Fi* communication.
- Depending on time zone, the initial settings may take from 30 seconds to 3 minutes. Wait for a while with "Eメールアドレスの設定中です。しばらくお待ちください。" (Setting email address. Wait for a while.) displayed on the screen.

Making the initial settings

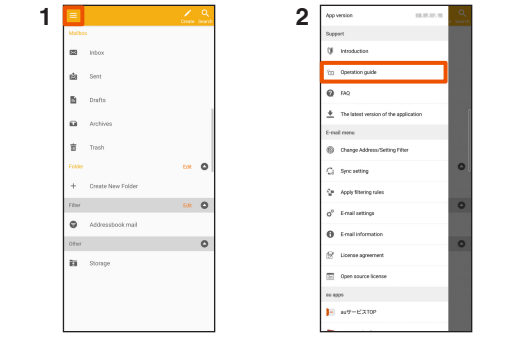


*1 For change of model, the au-mail address which you have been used so far is displayed.

Checking your au-mail address

1 In the Home screen, slide the screen up → [au-mail] → [E] → [E-mail information]

Checking the operations of au-mail app



In the Home screen, slide the screen up → [au-mail] → [E]

Changing your au-mail address

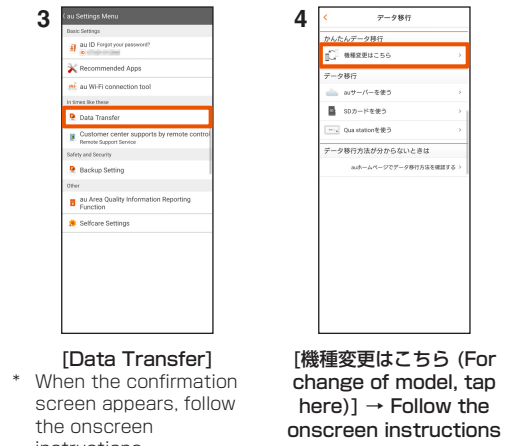
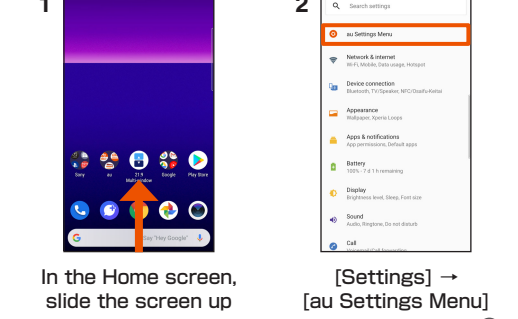
- In the Home screen, slide the screen up → [au-mail] → [E] → [Change Address/Setting Filter] → [OK]
- [メールアドレスの変更へ (To change Mail address)] → Enter the security code^{*1} → [送信 (Send)] → [OK]
- Confirm the content → [承諾する (I agree)] → Mark "ご希望のメールアドレスに変更する (Change to your desired mail address)" and enter a mail address of your choice → [送信 (Send)] → [OK]

*1 PIN number is a four digit number chosen by the customer and noted on the application form.

- When the confirmation screen appears, follow the onscreen instructions.
- The operations or the screen displays are subject to change without notice.

Transferring data from au Settings Menu

- Import or export data between the product and your previous au mobile phone by using microSD memory card or via the au server.
- To import data via the au server, save data to the au server from your previous au mobile phone in advance. To use the au server, set au ID (if there is no au Settings Menu on your previous au mobile phone, use "au Cloud" app).
- To import data by using a microSD memory card, save the data to a microSD memory card from your previous au mobile phone in advance (if there is no au Settings Menu on your previous au mobile phone, use "au backup" app).



- To back up photos and contacts to the au server automatically using "Data storage App", use this procedure. In the Home screen, slide the screen up → [Settings] → [au Settings Menu] → [Backup Setting] → Mark items to back up automatically

Receiving a call

- When the screen is OFF or on the lock screen

- Incoming call screen → Swipe (flick) "📞" up To reject the incoming call, swipe (flick) "📞" down. To answer with Answering Machine, slide the status bar in the top of the screen down → Tap "Answering Machine".

- Call → [📞]

- When the screen is ON (except on the lock screen)

- In the displayed notification, [ANSWER] To reject an incoming call, tap "DECLINE". To answer with Answering Machine, slide the status bar in the top of the screen down → Tap "Answering Machine".

- Call → [📞]

Setting wireless LAN (Wi-Fi®)

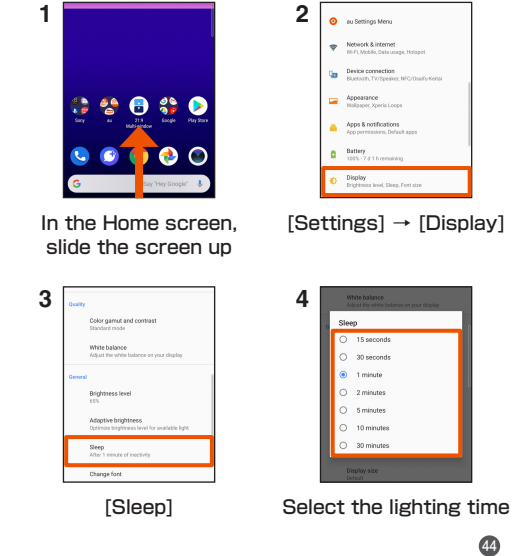
You can use a home wireless LAN (Wi-Fi®) or public wireless LAN to access the Internet services. Set it in a place where the signal of Wi-Fi® network can be received.



*1 If Wi-Fi® is off, set it on.

Setting the lighting time of screen

The screen turns off automatically when the set time has elapsed while no operation is made. When you cannot operate readily because the screen turns off soon, change the lighting time.



Appendix

Peripheral devices

- TypeC Common AC Adapter 01 (0601PQA) (sold separately)
- TypeC Common AC Adapter 02 (0602PQA) (sold separately)^{*1}
- Common AC Adapter 05 (0501PWA) (sold separately)^{*1}
- Common DC Adapter 03 (0301PEA) (sold separately)^{*1}
- Micro-B Type-C Adapter (0601PHA) (sold separately)
- au Carrying Case G Black (0106FCA) (sold separately)

*1 For use, Micro-B Type-C Adapter (sold separately) is needed.

- Information
- Accessories can be purchased from the au Online Shop. <https://onlineshop.au.com/> (Japanese)

Main specifications

| Main unit | | |
|--------------------------|--|--------------------|
| Display | Approx. 6.0 inches Liquid crystal TRILUMINOS® Display for mobile, Approx. 16.77 million colors 1,080 x 2,520 dots | |
| Weight | Approx. 170 g | |
| Dimension (W x H x T) | Approx. 69 mm x 158 mm x 8.1 mm (9.7 mm where thickest) | |
| Internal memory | ROM: Approx. 64 GB RAM: Approx. 4 GB | |
| Camera pixels | Camera: Effective pixels Approx. 12 million pixels, 8 million pixels Front camera: Effective pixels Approx. 8 million pixels | |
| Continuous call time | In Japan | Approx. 1,700 min. |
| | Overseas (GSM) | Approx. 720 min. |
| Continuous stand-by time | In Japan | Approx. 580 hours |
| | Overseas (GSM) | Approx. 650 hours |

| | | |
|---|--|---|
| Charging time | | |
| Using TypeC Common AC Adapter 01 (sold separately): Approx. 160 min. Using TypeC Common AC Adapter 02 (sold separately): Approx. 140 min. | | |
| Continuous tethering time | | |
| Wi-Fi® tethering maximum connection number | | |
| Bluetooth® function | Communication type | Compliant with Bluetooth® standard Ver.5.0 |
| | Output | Compliant with Bluetooth® standard Power Class 1 |
| | Communication coverage distance ¹ | Within 10 m with good visibility |
| | Supported Bluetooth® profile ² | HSP, HFP, PBAP ³ , A2DP, apt-X, AVRCP, SPP, OPP, HID, HOGP, MAP, GATT, PAN-NAP, PANU |
| Radio frequency band | | 2.4 GHz band (2,400 MHz - 2,483.5 MHz) |

- *1 Varies by obstruction between communication devices or radio wave reception status.
- *2 It is a specification according to purpose of use of Bluetooth® device and is defined by Bluetooth® standard.
- *3 Some contacts data may not be displayed correctly on the other party's device.

- Information
- The continuous call time, continuous stand-by time and continuous tethering time may drop to less than half depending on the battery charging status, usage environment such as temperature, reception condition at the location where the product is used, and the function settings.

For inquiries, call: Customer Service Center

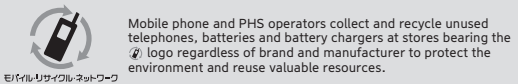
For general information (toll free)
Business hours 9:00–20:00 (7 days a week)
From au mobile phones | From non-au mobile phones/general subscriber phones
157 without area code ☎ 0077-7-111
In case above numbers are not available (toll free).
☎ 0120-977-033 (except Okinawa) ☎ 0120-977-699 (Okinawa)

For theft, loss, or malfunction (toll free)

Business hours : 24 hours live support
From au mobile phones | From non-au mobile phones/general subscriber phones
113 without area code ☎ 0077-7-113
In case above numbers are not available (toll free).
☎ 0120-925-314

Repair and Delivery Support Center

For theft, loss, or malfunction (toll free) | From au mobile phones/non-au mobile phones/general subscriber phones
Business hours 9:00–20:00 (7 days a week) ☎ 0120-925-919



やめましよう、歩きスマホ。 キケン! 水ぬれ充電 あぶない! 電池への衝撃