

System Performance Check Report for D2450V2 - SN706

Exposure Conditions

Frequency [MHz] Channel Number	2450.000 0	TSL Permittivity	37.5
Group UID	CW 0--	TSL Conductivity [S/m]	1.80
Conversion Factor	7.33	Phantom Section TSL	Flat HSL

Hardware Setup

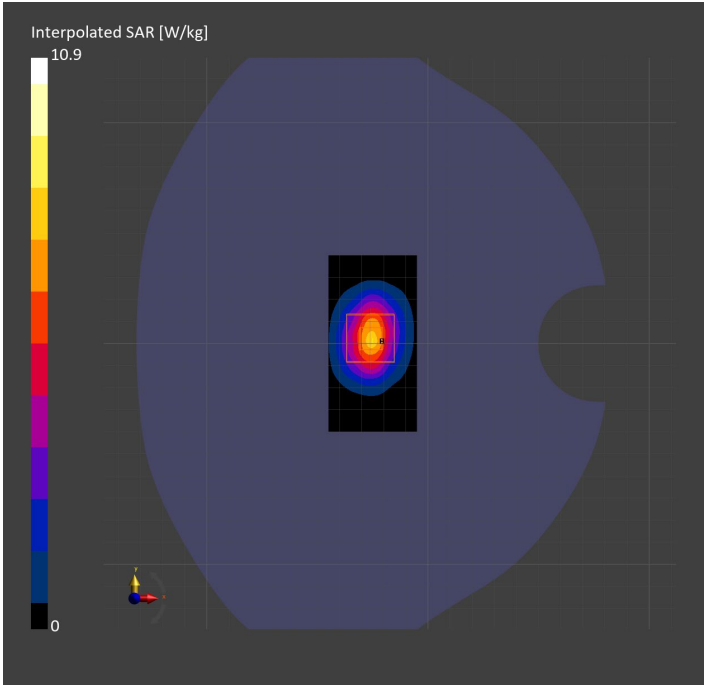
Probe Calibration Date	EX3DV4 - SN3772 2023-02-13	Phantom	Twin-SAM V8.0 (30deg probe tilt)
DAE Calibration Date	DAE4 Sn1359 2023-01-24	TSL Type	HBBL-600-10000
Software Version	16.2.4.2524		

Scans Setup

	Area Scan	Zoom Scan
Grid Extents [mm]	40.0 x 80.0	30.0 x 30.0 x 30.0
Grid Steps [mm]	10.0 x 10.0	5.0 x 5.0 x 1.5
Sensor Surface [mm]	3.0	1.4
Graded Grid	N/A	Yes
M2/M1 [%]		80.9
Dist 3dB Peak [mm]		9.0

Measurement Results

	Area Scan	Zoom Scan
psSAR1g [W/Kg]	5.83	5.37
psSAR10g [W/Kg]	2.72	2.50
Power Drift [dB]	N/A	-0.17



System Performance Check Report for D5GHzV2 - SN1138

Exposure Conditions

Frequency [MHz] Channel Number	5250.000 0	TSL Permittivity	35.8
Group UID	CW 0--	TSL Conductivity [S/m]	4.68
Conversion Factor	5.14	Phantom Section TSL	Flat HSL

Hardware Setup

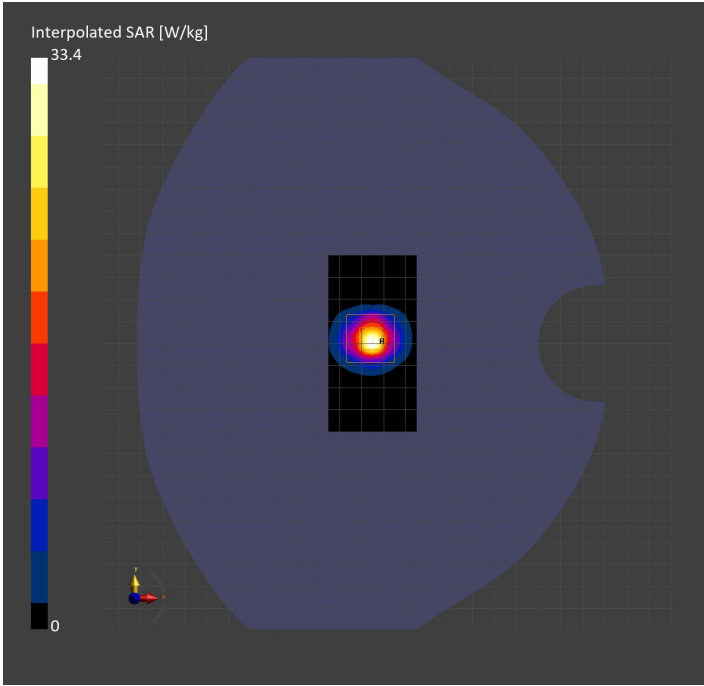
Probe Calibration Date	EX3DV4 - SN3773 2023-02-13	Phantom	Twin-SAM V5.0 (30deg probe tilt)
DAE Calibration Date	DAE4 Sn1258 2023-03-16	TSL Type	HBBL-600-10000
Software Version	16.2.4.2524		

Scans Setup

	Area Scan	Zoom Scan
Grid Extents [mm]	40.0 x 80.0	22.0 x 22.0 x 22.0
Grid Steps [mm]	10.0 x 10.0	4.0 x 4.0 x 1.4
Sensor Surface [mm]	3.0	1.4
Graded Grid	N/A	Yes
M2/M1 [%]		63.9
Dist 3dB Peak [mm]		7.2

Measurement Results

	Area Scan	Zoom Scan
psSAR1g [W/Kg]	7.82	8.47
psSAR10g [W/Kg]	2.26	2.44
Power Drift [dB]	N/A	-0.04



System Performance Check Report for D2450V2 - SN899

Exposure Conditions

Frequency [MHz] Channel Number	2450.000 0	TSL Permittivity	39.5
Group UID	CW 0--	TSL Conductivity [S/m]	1.73
Conversion Factor	7.64	Phantom Section TSL	Flat HSL

Hardware Setup

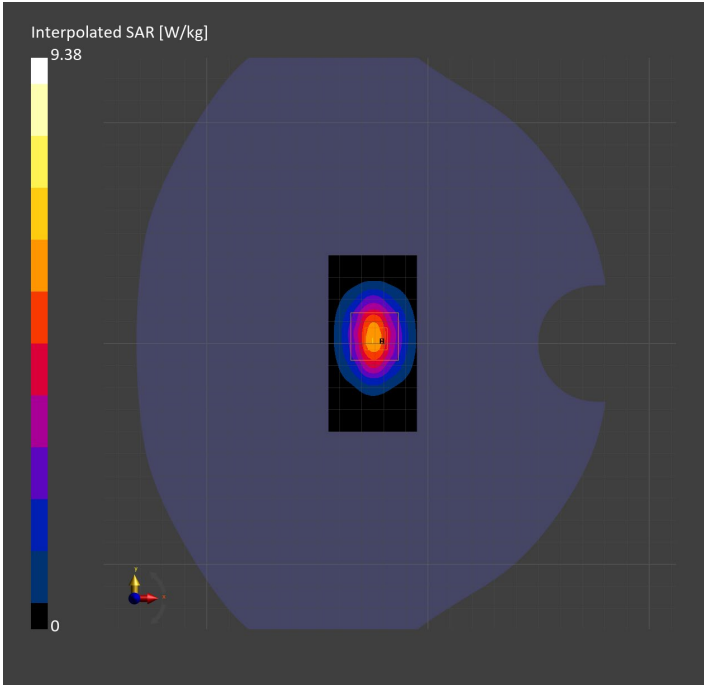
Probe Calibration Date	EX3DV4 - SN7587 2023-04-18	Phantom	Twin-SAM V8.0 (30deg probe tilt)
DAE Calibration Date	DAE4 Sn1239 2023-03-16	TSL Type	HBBL-600-10000
Software Version	16.2.4.2524		

Scans Setup

	Area Scan	Zoom Scan
Grid Extents [mm]	40.0 x 80.0	30.0 x 30.0 x 30.0
Grid Steps [mm]	10.0 x 10.0	5.0 x 5.0 x 1.5
Sensor Surface [mm]	3.0	1.4
Graded Grid	N/A	Yes
M2/M1 [%]		82.3
Dist 3dB Peak [mm]		9.0

Measurement Results

	Area Scan	Zoom Scan
psSAR1g [W/Kg]	4.70	4.84
psSAR10g [W/Kg]	2.18	2.32
Power Drift [dB]	N/A	-0.02



System Performance Check Report for D5GHzV2 - SN1003

Exposure Conditions

Frequency [MHz] Channel Number	5600.000 0	TSL Permittivity	34.1
Group UID	CW 0--	TSL Conductivity [S/m]	4.84
Conversion Factor	4.75	Phantom Section TSL	Flat HSL

Hardware Setup

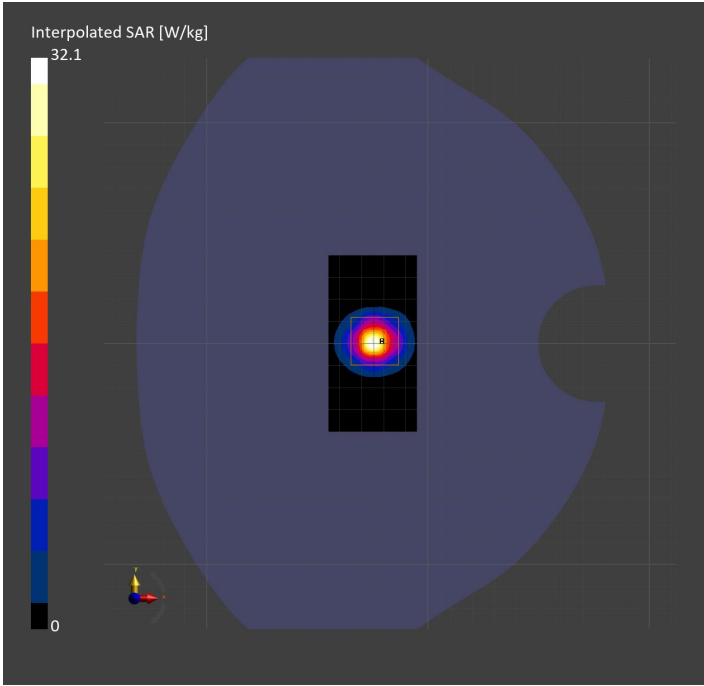
Probe Calibration Date	EX3DV4 - SN3929 2023-04-26	Phantom	Twin-SAM V5.0 (30deg probe tilt)
DAE Calibration Date	DAE4 Sn1675 2023-05-11	TSL Type	HBBL-600-10000
Software Version	16.2.4.2524		

Scans Setup

	Area Scan	Zoom Scan
Grid Extents [mm]	40.0 x 80.0	22.0 x 22.0 x 22.0
Grid Steps [mm]	10.0 x 10.0	4.0 x 4.0 x 1.4
Sensor Surface [mm]	3.0	1.4
Graded Grid	N/A	Yes
M2/M1 [%]		62.0
Dist 3dB Peak [mm]		7.3

Measurement Results

	Area Scan	Zoom Scan
psSAR1g [W/Kg]	7.34	7.64
psSAR10g [W/Kg]	2.06	2.14
Power Drift [dB]	N/A	0.02



System Performance Check Report for D5GHzV2 - SN1168

Exposure Conditions

Frequency [MHz] Channel Number	5600.000 0	TSL Permittivity	37.2
Group UID	CW 0--	TSL Conductivity [S/m]	4.81
Conversion Factor	4.46	Phantom Section TSL	Flat HSL

Hardware Setup

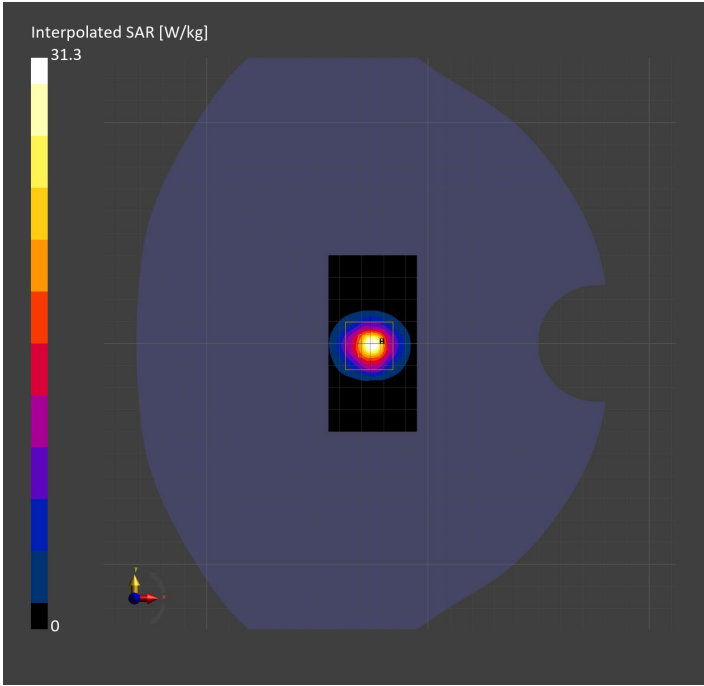
Probe Calibration Date	EX3DV4 - SN7585 2023-04-18	Phantom	Twin-SAM V5.0 (30deg probe tilt)
DAE Calibration Date	DAE4 Sn1259 2023-03-13	TSL Type	HBBL-600-10000
Software Version	16.2.4.2524		

Scans Setup

	Area Scan	Zoom Scan
Grid Extents [mm]	40.0 x 80.0	22.0 x 22.0 x 22.0
Grid Steps [mm]	10.0 x 10.0	4.0 x 4.0 x 1.4
Sensor Surface [mm]	3.0	1.4
Graded Grid	N/A	Yes
M2/M1 [%]		61.4
Dist 3dB Peak [mm]		7.3

Measurement Results

	Area Scan	Zoom Scan
psSAR1g [W/Kg]	6.74	7.33
psSAR10g [W/Kg]	1.90	2.06
Power Drift [dB]	N/A	0.14



System Performance Check Report for D5GHzV2 - SN1138

Exposure Conditions

Frequency [MHz] Channel Number	5600.000 0	TSL Permittivity	35.6
Group UID	CW 0--	TSL Conductivity [S/m]	4.85
Conversion Factor	4.46	Phantom Section TSL	Flat HSL

Hardware Setup

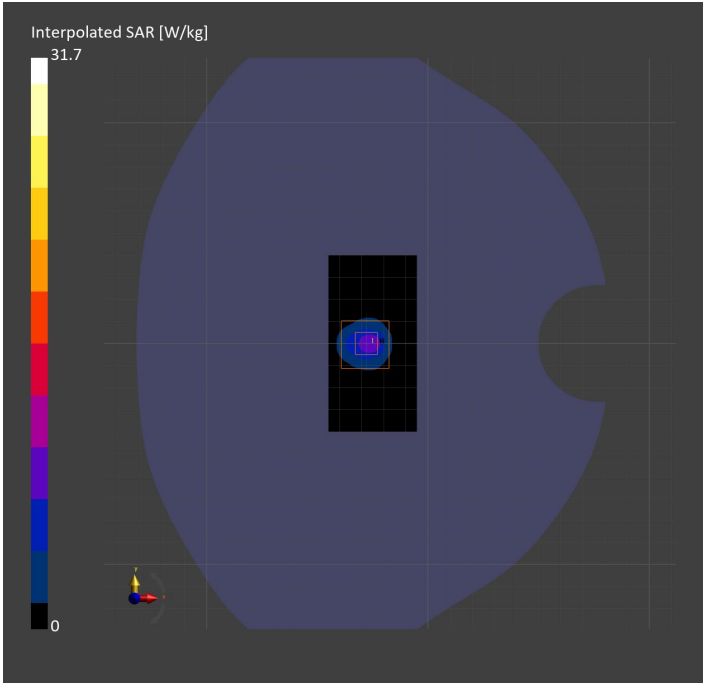
Probe Calibration Date	EX3DV4 - SN7585 2023-04-18	Phantom	Twin-SAM V5.0 (30deg probe tilt)
DAE Calibration Date	DAE4 Sn1797 2023-04-03	TSL Type	HBBL-600-10000
Software Version	16.2.4.2524		

Scans Setup

	Area Scan	Zoom Scan
Grid Extents [mm]	40.0 x 80.0	22.0 x 22.0 x 22.0
Grid Steps [mm]	10.0 x 10.0	4.0 x 4.0 x 1.4
Sensor Surface [mm]	3.0	1.4
Graded Grid	N/A	Yes
M2/M1 [%]		61.8
Dist 3dB Peak [mm]		7.2

Measurement Results

	Area Scan	Zoom Scan
psSAR1g [W/Kg]	6.69	7.60
psSAR10g [W/Kg]	1.97	2.14
Power Drift [dB]	N/A	0.00



System Performance Check Report for D5GHzV2 - SN1138

Exposure Conditions

Frequency [MHz] Channel Number	5750.000 0	TSL Permittivity	35.4
Group UID	CW 0--	TSL Conductivity [S/m]	5.23
Conversion Factor	5.15	Phantom Section TSL	Flat HSL

Hardware Setup

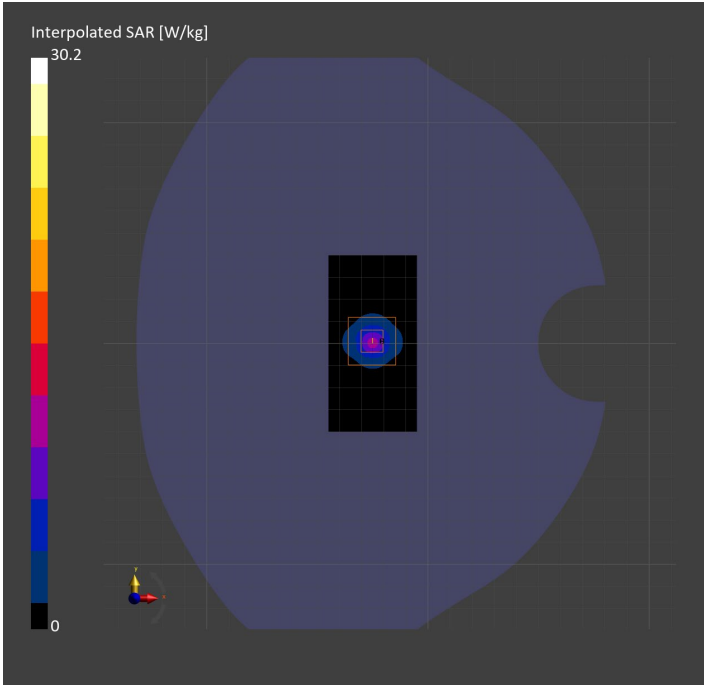
Probe Calibration Date	EX3DV4 - SN3902 2023-03-17	Phantom	Twin-SAM V5.0 (30deg probe tilt)
DAE Calibration Date	DAE4 Sn1439 2023-03-16	TSL Type	HBBL-600-10000
Software Version	16.2.4.2524		

Scans Setup

	Area Scan	Zoom Scan
Grid Extents [mm]	40.0 x 80.0	22.0 x 22.0 x 22.0
Grid Steps [mm]	10.0 x 10.0	4.0 x 4.0 x 1.4
Sensor Surface [mm]	3.0	1.4
Graded Grid	N/A	Yes
M2/M1 [%]		62.3
Dist 3dB Peak [mm]		7.6

Measurement Results

	Area Scan	Zoom Scan
psSAR1g [W/Kg]	6.86	7.07
psSAR10g [W/Kg]	1.95	2.03
Power Drift [dB]	N/A	-0.02



System Performance Check Report for D5GHzV2 - SN1138

Exposure Conditions

Band		TSL Permittivity	34.1
Frequency [MHz] Channel Number	5750.000 0	TSL Conductivity [S/m]	5.12
Group UID	CW 0--	Phantom Section TSL	Flat HSL
Conversion Factor	4.86	Test Distance [mm]	

Hardware Setup

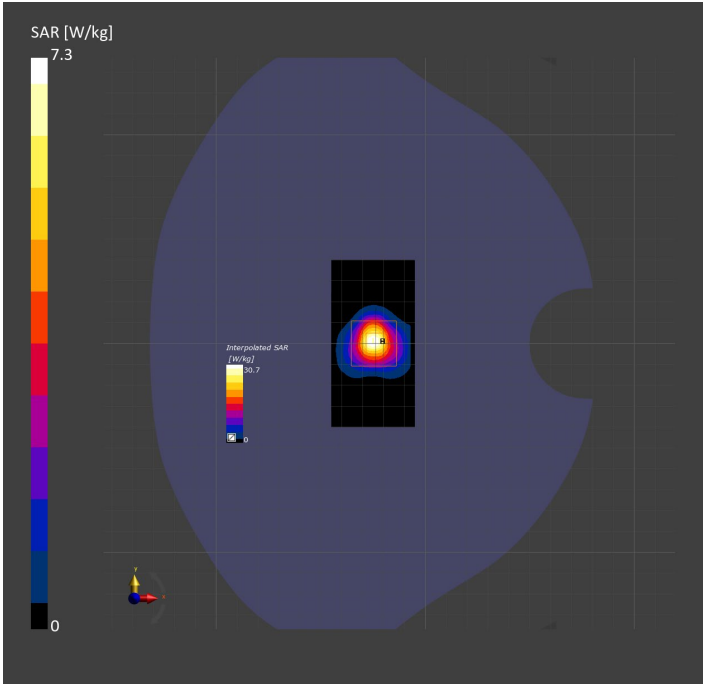
Probe Calibration Date	EX3DV4 - SN7810 2023-04-25	Phantom	Twin-SAM V8.0 (30deg probe tilt)
DAE Calibration Date	DAE4 Sn1797 2023-04-03	TSL Type	HBBL-600-10000
Software Version	16.2.4.2524		

Scan Setup

	Area Scan	Zoom Scan
Grid Extents [mm]	40.0 x 80.0	22.0 x 22.0 x 22.0
Grid Steps [mm]	10.0 x 10.0	4.0 x 4.0 x 1.4
Sensor Surface [mm]	3.0	1.4
Graded Grid	N/A	Yes
M2/M1 [%]		60.7
Dist 3dB Peak [mm]		7.4

Measurement Results

	Area Scan	Zoom Scan
psSAR1g [W/Kg]	6.77	7.31
psSAR10g [W/Kg]	1.94	2.11
Power Drift [dB]	N/A	-0.02



System Performance Check Report for D2600V2 - SN1036

Exposure Conditions

Frequency [MHz] Channel Number	2600.000 0	TSL Permittivity	37.8
Group UID	CW 0--	TSL Conductivity [S/m]	1.89
Conversion Factor	6.72	Phantom Section TSL	Flat HSL

Hardware Setup

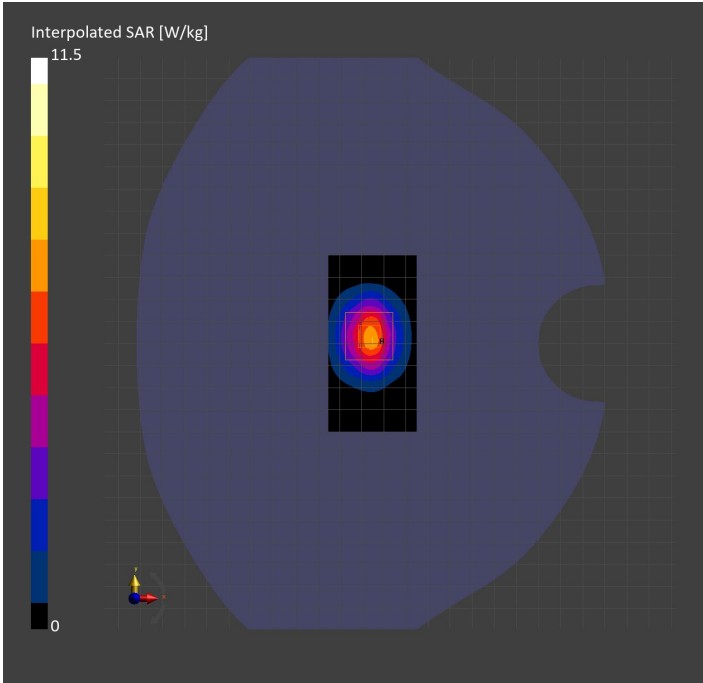
Probe Calibration Date	EX3DV4 - SN3749 2023-01-27	Phantom	Twin-SAM V8.0 (30deg probe tilt)
DAE Calibration Date	DAE4 Sn1357 2023-01-27	TSL Type	HBBL-600-10000
Software Version	16.2.4.2524		

Scans Setup

	Area Scan	Zoom Scan
Grid Extents [mm]	40.0 x 80.0	30.0 x 30.0 x 30.0
Grid Steps [mm]	10.0 x 10.0	5.0 x 5.0 x 1.5
Sensor Surface [mm]	3.0	1.4
Graded Grid	N/A	Yes
M2/M1 [%]		81.3
Dist 3dB Peak [mm]		9.0

Measurement Results

	Area Scan	Zoom Scan
psSAR1g [W/Kg]	5.58	5.75
psSAR10g [W/Kg]	2.56	2.68
Power Drift [dB]	N/A	-0.00



System Performance Check Report for D835V2 - SN4d002

Exposure Conditions

Frequency [MHz] Channel Number	835.000 0	TSL Permittivity	43.3
Group UID	CW 0--	TSL Conductivity [S/m]	0.945
Conversion Factor	7.83	Phantom Section TSL	Flat HSL

Hardware Setup

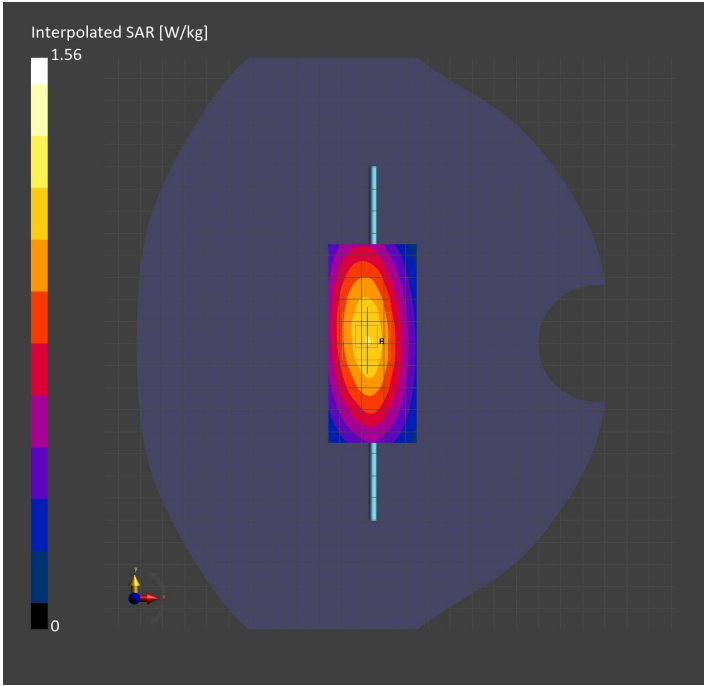
Probe Calibration Date	EX3DV4 - SN3749 2023-01-27	Phantom	Twin-SAM V8.0 (30deg probe tilt)
DAE Calibration Date	DAE4 Sn1357 2023-01-27	TSL Type	HBBL-600-10000
Software Version	16.2.4.2524		

Scans Setup

	Area Scan	Zoom Scan
Grid Extents [mm]	40.0 x 90.0	30.0 x 30.0 x 30.0
Grid Steps [mm]	10.0 x 15.0	6.0 x 6.0 x 1.5
Sensor Surface [mm]	3.0	1.4
Graded Grid	N/A	Yes
M2/M1 [%]		89.8
Dist 3dB Peak [mm]		15.6

Measurement Results

	Area Scan	Zoom Scan
psSAR1g [W/Kg]	1.02	1.07
psSAR10g [W/Kg]	0.674	0.703
Power Drift [dB]	N/A	-0.10



System Performance Check Report for D3500V2 - SN1011

Exposure Conditions

Frequency [MHz] Channel Number	3500.000 0	TSL Permittivity	38.8
Group UID	CW 0--	TSL Conductivity [S/m]	2.78
Conversion Factor	6.78	Phantom Section TSL	Flat HSL

Hardware Setup

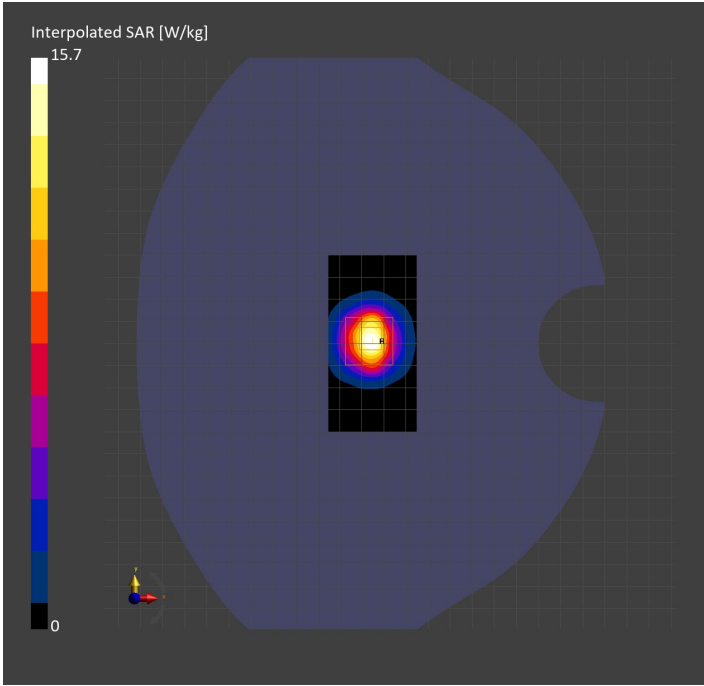
Probe Calibration Date	EX3DV4 - SN3989 2023-01-26	Phantom	Twin-SAM V8.0 (30deg probe tilt)
DAE Calibration Date	DAE4 Sn1257 2022-09-20	TSL Type	HBBL-600-10000
Software Version	16.2.4.2524		

Scans Setup

	Area Scan	Zoom Scan
Grid Extents [mm]	40.0 x 80.0	28.0 x 28.0 x 28.0
Grid Steps [mm]	10.0 x 10.0	5.0 x 5.0 x 1.4
Sensor Surface [mm]	3.0	1.4
Graded Grid	N/A	Yes
M2/M1 [%]		76.1
Dist 3dB Peak [mm]		8.3

Measurement Results

	Area Scan	Zoom Scan
psSAR1g [W/Kg]	6.08	6.18
psSAR10g [W/Kg]	2.38	2.39
Power Drift [dB]	N/A	0.02



System Performance Check Report for D3700V2 - SN1110

Exposure Conditions

Frequency [MHz] Channel Number	3700.000 0	TSL Permittivity	38.5
Group UID	CW 0--	TSL Conductivity [S/m]	2.97
Conversion Factor	6.94	Phantom Section TSL	Flat HSL

Hardware Setup

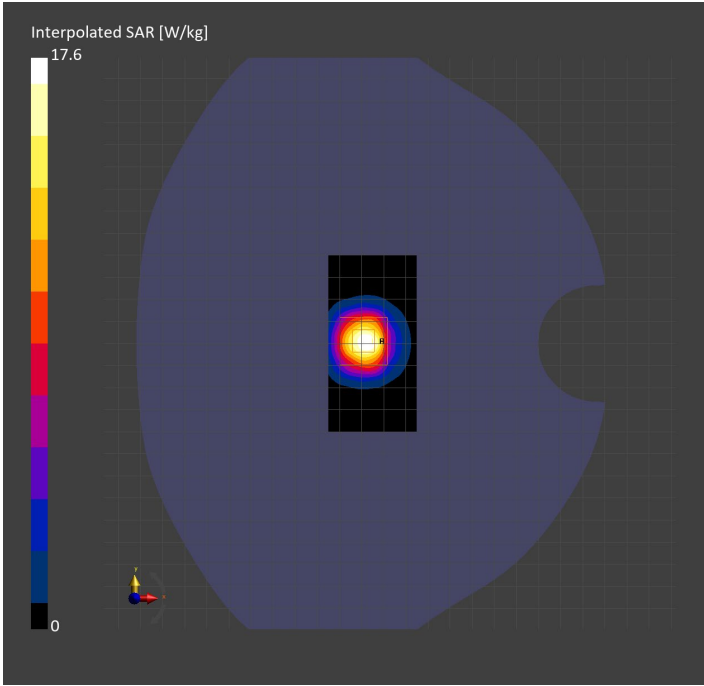
Probe Calibration Date	EX3DV4 - SN3989 2023-01-26	Phantom	Twin-SAM V8.0 (30deg probe tilt)
DAE Calibration Date	DAE4 Sn1257 2022-09-20	TSL Type	HBBL-600-10000
Software Version	16.2.4.2524		

Scans Setup

	Area Scan	Zoom Scan
Grid Extents [mm]	40.0 x 80.0	28.0 x 28.0 x 28.0
Grid Steps [mm]	10.0 x 10.0	5.0 x 5.0 x 1.4
Sensor Surface [mm]	3.0	1.4
Graded Grid	N/A	Yes
M2/M1 [%]		75.9
Dist 3dB Peak [mm]		8.3

Measurement Results

	Area Scan	Zoom Scan
psSAR1g [W/Kg]	6.34	6.82
psSAR10g [W/Kg]	2.50	2.57
Power Drift [dB]	N/A	-0.02



System Performance Check Report for D1750V2 - SN1053

Exposure Conditions

Frequency [MHz] Channel Number	1750.000 0	TSL Permittivity	38.5
Group UID	CW 0--	TSL Conductivity [S/m]	1.33
Conversion Factor	8.98	Phantom Section TSL	Flat HSL

Hardware Setup

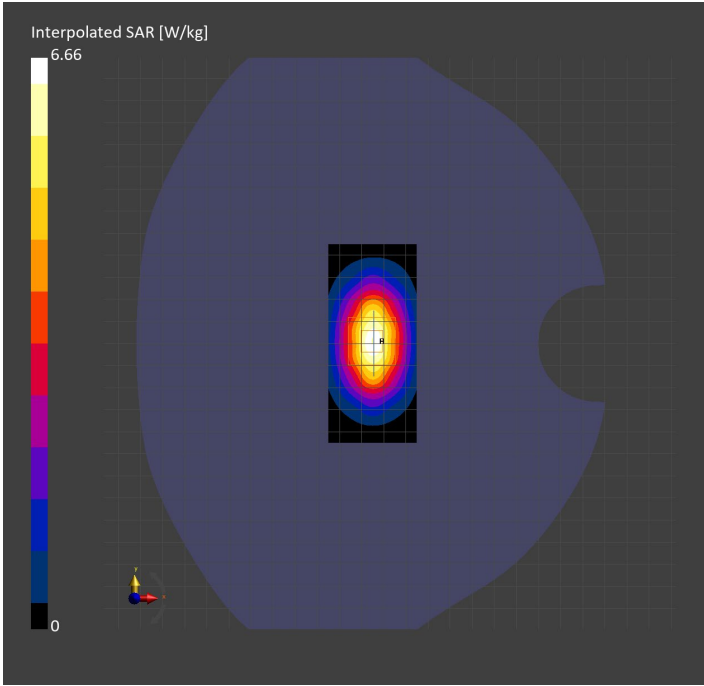
Probe Calibration Date	EX3DV4 - SN3989 2023-01-26	Phantom	Twin-SAM V8.0 (30deg probe tilt)
DAE Calibration Date	DAE4 Sn1257 2022-09-20	TSL Type	HBBL-600-10000
Software Version	16.2.4.2524		

Scans Setup

	Area Scan	Zoom Scan
Grid Extents [mm]	40.0 x 90.0	30.0 x 30.0 x 30.0
Grid Steps [mm]	10.0 x 15.0	6.0 x 6.0 x 1.5
Sensor Surface [mm]	3.0	1.4
Graded Grid	N/A	Yes
M2/M1 [%]		84.1
Dist 3dB Peak [mm]		10.8

Measurement Results

	Area Scan	Zoom Scan
psSAR1g [W/Kg]	3.86	3.76
psSAR10g [W/Kg]	2.07	2.04
Power Drift [dB]	N/A	-0.05



System Performance Check Report for D1640V2 - SN334

Exposure Conditions

Frequency [MHz] Channel Number	1640.000 0	TSL Permittivity	41.3
Group UID	CW 0--	TSL Conductivity [S/m]	1.25
Conversion Factor	8.86	Phantom Section TSL	Flat HSL

Hardware Setup

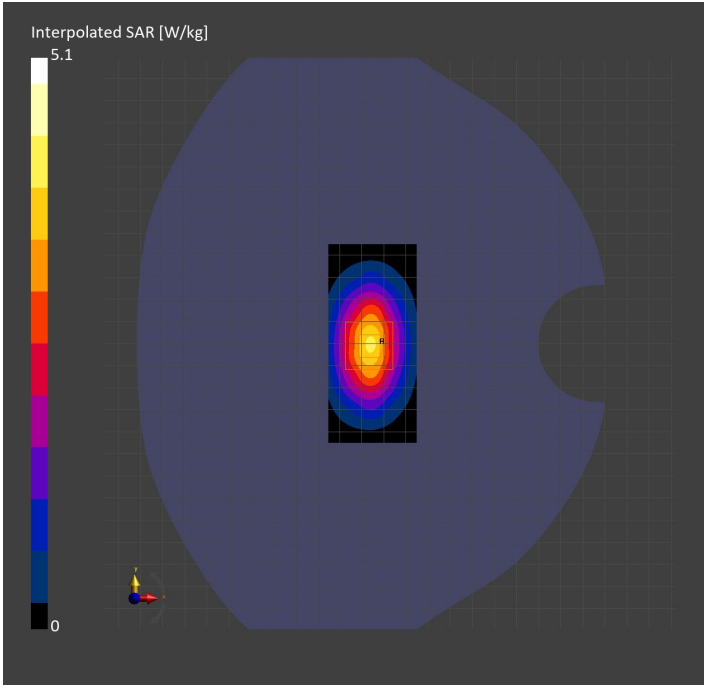
Probe Calibration Date	EX3DV4 - SN3989 2023-01-26	Phantom	Twin-SAM V8.0 (30deg probe tilt)
DAE Calibration Date	DAE4 Sn1257 2022-09-20	TSL Type	HBBL-600-10000
Software Version	16.2.4.2524		

Scans Setup

	Area Scan	Zoom Scan
Grid Extents [mm]	40.0 x 90.0	30.0 x 30.0 x 30.0
Grid Steps [mm]	10.0 x 15.0	6.0 x 6.0 x 1.5
Sensor Surface [mm]	3.0	1.4
Graded Grid	N/A	Yes
M2/M1 [%]		86.6
Dist 3dB Peak [mm]		11.4

Measurement Results

	Area Scan	Zoom Scan
psSAR1g [W/Kg]	3.20	3.10
psSAR10g [W/Kg]	1.77	1.74
Power Drift [dB]	N/A	-0.14



System Performance Check Report for D1750V2 - SN1050

Exposure Conditions

Frequency [MHz] Channel Number	1750.000 0	TSL Permittivity	41.6
Group UID	CW 0--	TSL Conductivity [S/m]	1.34
Conversion Factor	8.66	Phantom Section TSL	Flat HSL

Hardware Setup

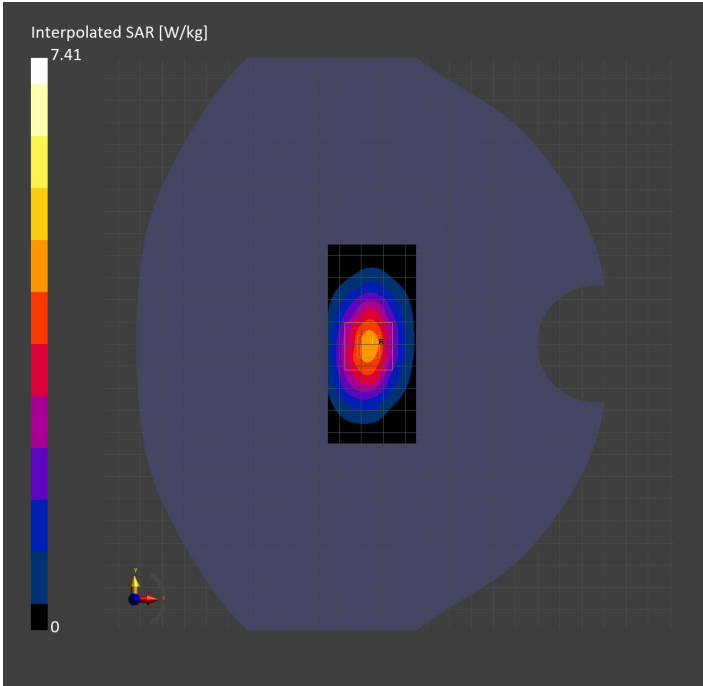
Probe Calibration Date	EX3DV4 - SN7569 2023-04-18	Phantom	Twin-SAM V8.0 (30deg probe tilt)
DAE Calibration Date	DAE4 Sn1547 2023-04-18	TSL Type	HBBL-600-10000
Software Version	16.2.4.2524		

Scans Setup

	Area Scan	Zoom Scan
Grid Extents [mm]	40.0 x 90.0	30.0 x 30.0 x 30.0
Grid Steps [mm]	10.0 x 15.0	6.0 x 6.0 x 1.5
Sensor Surface [mm]	3.0	1.4
Graded Grid	N/A	Yes
M2/M1 [%]		80.3
Dist 3dB Peak [mm]		10.8

Measurement Results

	Area Scan	Zoom Scan
psSAR1g [W/Kg]	3.88	3.82
psSAR10g [W/Kg]	2.09	2.04
Power Drift [dB]	N/A	-0.03



System Performance Check Report for D1900V2 - SN5d163

Exposure Conditions

Frequency [MHz] Channel Number	1900.000 0	TSL Permittivity	41.7
Group UID	CW 0--	TSL Conductivity [S/m]	1.41
Conversion Factor	8.43	Phantom Section TSL	Flat HSL

Hardware Setup

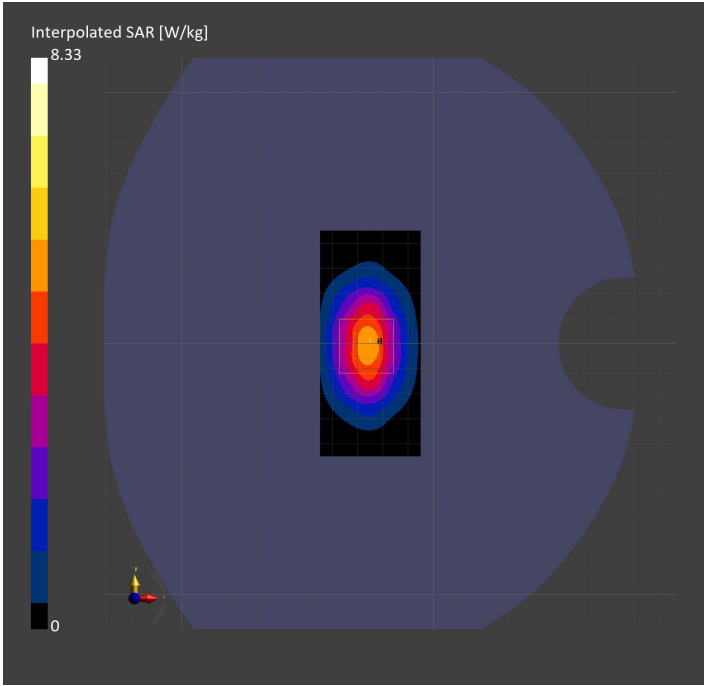
Probe Calibration Date	EX3DV4 - SN3991 2022-09-22	Phantom	Twin-SAM V8.0 (30deg probe tilt)
DAE Calibration Date	DAE4 Sn1674 2023-05-11	TSL Type	HBBL-600-10000
Software Version	16.2.4.2524		

Scans Setup

	Area Scan	Zoom Scan
Grid Extents [mm]	40.0 x 90.0	30.0 x 30.0 x 30.0
Grid Steps [mm]	10.0 x 15.0	6.0 x 6.0 x 1.5
Sensor Surface [mm]	3.0	1.4
Graded Grid	N/A	Yes
M2/M1 [%]		80.8
Dist 3dB Peak [mm]		10.8

Measurement Results

	Area Scan	Zoom Scan
psSAR1g [W/Kg]	4.40	4.30
psSAR10g [W/Kg]	2.30	2.23
Power Drift [dB]	N/A	-0.09



System Performance Check Report for D2600V2 - SN1036

Exposure Conditions

Frequency [MHz] Channel Number	2600.000 0	TSL Permittivity	38.8
Group UID	CW 0--	TSL Conductivity [S/m]	1.91
Conversion Factor	7.06	Phantom Section TSL	Flat HSL

Hardware Setup

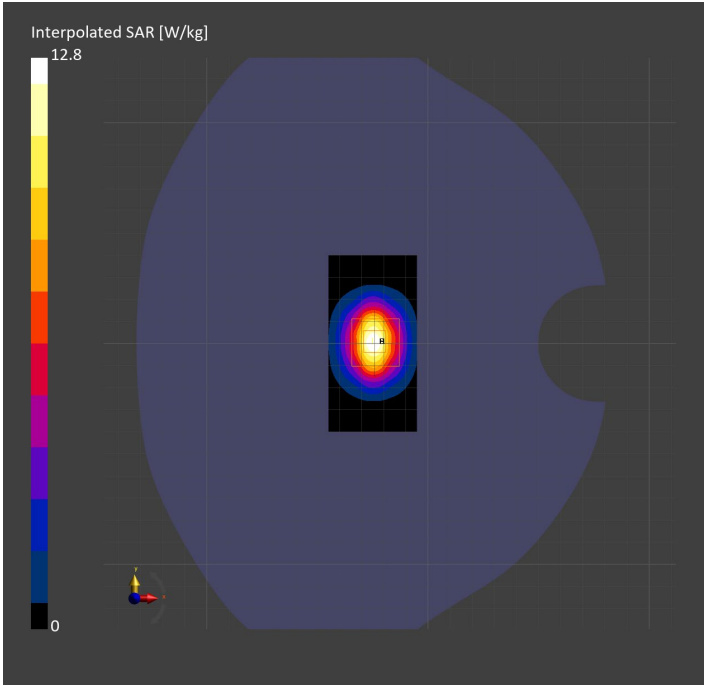
Probe Calibration Date	EX3DV4 - SN7806 2023-04-04	Phantom	Twin-SAM V8.0 (30deg probe tilt)
DAE Calibration Date	DAE4 Sn1784 2023-04-03	TSL Type	HBBL-600-10000
Software Version	16.2.4.2524		

Scans Setup

	Area Scan	Zoom Scan
Grid Extents [mm]	40.0 x 80.0	30.0 x 30.0 x 30.0
Grid Steps [mm]	10.0 x 10.0	5.0 x 5.0 x 1.5
Sensor Surface [mm]	3.0	1.4
Graded Grid	N/A	Yes
M2/M1 [%]		78.3
Dist 3dB Peak [mm]		9.0

Measurement Results

	Area Scan	Zoom Scan
psSAR1g [W/Kg]	5.86	5.97
psSAR10g [W/Kg]	2.63	2.71
Power Drift [dB]	N/A	-0.02



System Performance Check Report for D835V2 - SN4d002

Exposure Conditions

Frequency [MHz] Channel Number	835.000 0	TSL Permittivity	41.6
Group UID	CW 0--	TSL Conductivity [S/m]	0.894
Conversion Factor	8.76	Phantom Section TSL	Flat HSL

Hardware Setup

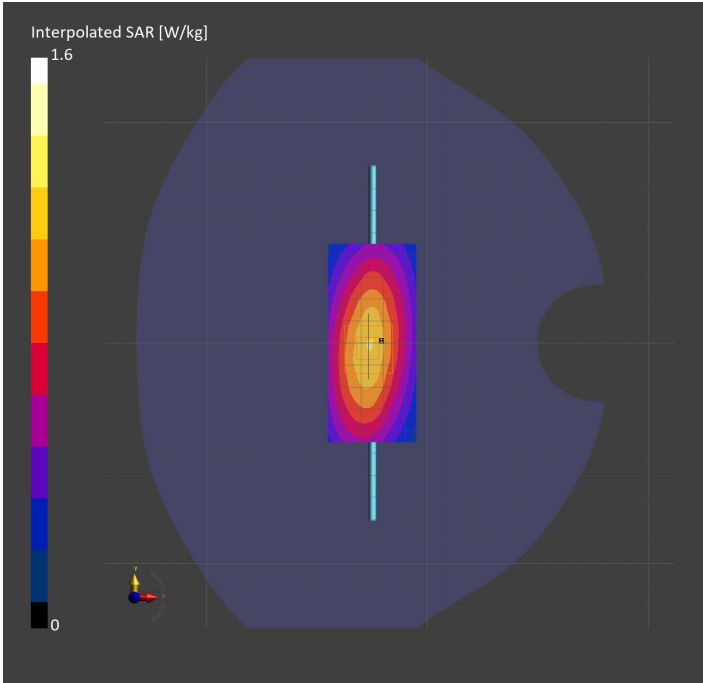
Probe Calibration Date	EX3DV4 - SN7806 2023-04-04	Phantom	Twin-SAM V8.0 (30deg probe tilt)
DAE Calibration Date	DAE4 Sn1784 2023-04-03	TSL Type	HBBL-600-10000
Software Version	16.2.4.2524		

Scans Setup

	Area Scan	Zoom Scan
Grid Extents [mm]	40.0 x 90.0	30.0 x 30.0 x 30.0
Grid Steps [mm]	10.0 x 15.0	6.0 x 6.0 x 1.5
Sensor Surface [mm]	3.0	1.4
Graded Grid	N/A	Yes
M2/M1 [%]		87.2
Dist 3dB Peak [mm]		17.2

Measurement Results

	Area Scan	Zoom Scan
psSAR1g [W/Kg]	1.04	1.05
psSAR10g [W/Kg]	0.690	0.697
Power Drift [dB]	N/A	0.01



System Performance Check Report for D1900V2 - SN5d140

Exposure Conditions

Frequency [MHz] Channel Number	1900.000 0	TSL Permittivity	38.4
Group UID	CW 0--	TSL Conductivity [S/m]	1.42
Conversion Factor	7.53	Phantom Section TSL	Flat HSL

Hardware Setup

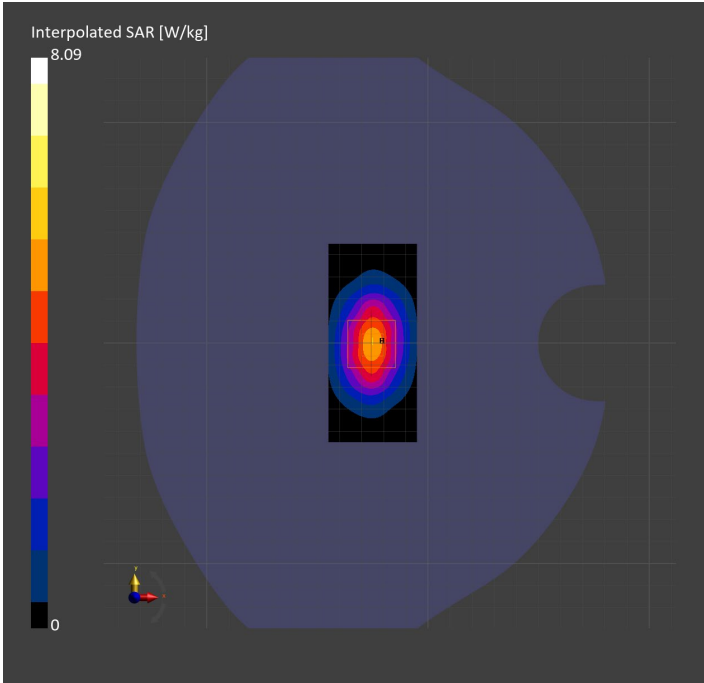
Probe Calibration Date	EX3DV4 - SN7807 2023-04-11	Phantom	Twin-SAM V8.0 (30deg probe tilt)
DAE Calibration Date	DAE4 Sn1799 2023-04-04	TSL Type	HBBL-600-10000
Software Version	16.2.4.2524		

Scans Setup

	Area Scan	Zoom Scan
Grid Extents [mm]	40.0 x 90.0	30.0 x 30.0 x 30.0
Grid Steps [mm]	10.0 x 15.0	6.0 x 6.0 x 1.5
Sensor Surface [mm]	3.0	1.4
Graded Grid	N/A	Yes
M2/M1 [%]		81.8
Dist 3dB Peak [mm]		10.3

Measurement Results

	Area Scan	Zoom Scan
psSAR1g [W/Kg]	4.29	4.30
psSAR10g [W/Kg]	2.24	2.25
Power Drift [dB]	N/A	-0.00



System Performance Check Report for D1900V2 - SN5d163

Exposure Conditions

Frequency [MHz] Channel Number	1900.000 0	TSL Permittivity	38.2
Group UID	CW 0--	TSL Conductivity [S/m]	1.45
Conversion Factor	7.53	Phantom Section TSL	Flat HSL

Hardware Setup

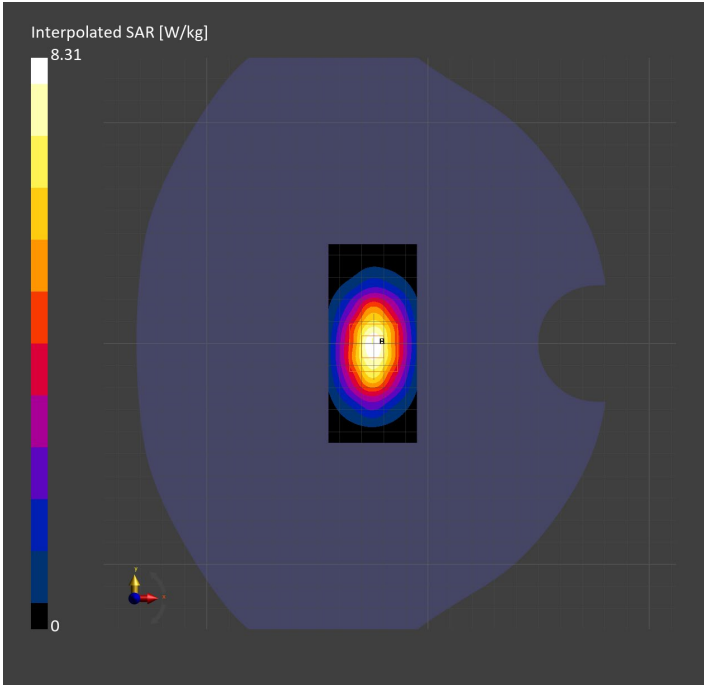
Probe Calibration Date	EX3DV4 - SN7807 2023-04-11	Phantom	Twin-SAM V8.0 (30deg probe tilt)
DAE Calibration Date	DAE4 Sn1799 2023-04-04	TSL Type	HBBL-600-10000
Software Version	16.2.4.2524		

Scans Setup

	Area Scan	Zoom Scan
Grid Extents [mm]	40.0 x 90.0	30.0 x 30.0 x 30.0
Grid Steps [mm]	10.0 x 15.0	6.0 x 6.0 x 1.5
Sensor Surface [mm]	3.0	1.4
Graded Grid	N/A	Yes
M2/M1 [%]		79.3
Dist 3dB Peak [mm]		10.9

Measurement Results

	Area Scan	Zoom Scan
psSAR1g [W/Kg]	4.17	4.22
psSAR10g [W/Kg]	2.18	2.20
Power Drift [dB]	N/A	-0.05



System Performance Check Report for D750V3 - SN1019

Exposure Conditions

Frequency [MHz] Channel Number	750.000 0	TSL Permittivity	44.3
Group UID	CW 0--	TSL Conductivity [S/m]	0.851
Conversion Factor	10.62	Phantom Section TSL	Flat HSL

Hardware Setup

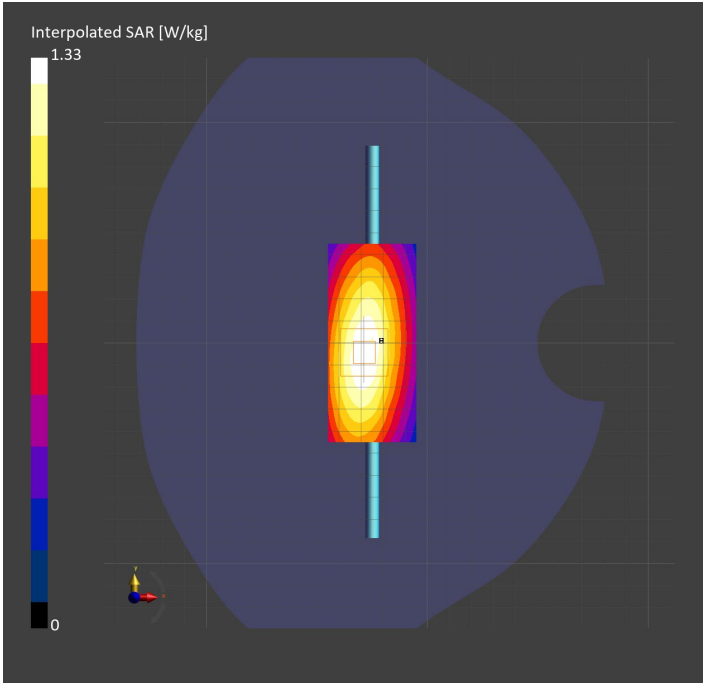
Probe Calibration Date	EX3DV4 - SN7589 2023-04-18	Phantom	Twin-SAM V5.0 (30deg probe tilt)
DAE Calibration Date	DAE4 Sn1544 2023-01-24	TSL Type	HBBL-600-10000
Software Version	16.2.4.2524		

Scans Setup

	Area Scan	Zoom Scan
Grid Extents [mm]	40.0 x 90.0	30.0 x 30.0 x 30.0
Grid Steps [mm]	10.0 x 15.0	6.0 x 6.0 x 1.5
Sensor Surface [mm]	3.0	1.4
Graded Grid	N/A	Yes
M2/M1 [%]		88.1
Dist 3dB Peak [mm]		> 15.0

Measurement Results

	Area Scan	Zoom Scan
psSAR1g [W/Kg]	0.899	0.897
psSAR10g [W/Kg]	0.605	0.602
Power Drift [dB]	N/A	-0.02



System Performance Check Report for D2600V2 - SN1036

Exposure Conditions

Frequency [MHz] Channel Number	2600.000 0	TSL Permittivity	40.1
Group UID	CW 0--	TSL Conductivity [S/m]	1.89
Conversion Factor	7.64	Phantom Section TSL	Flat HSL

Hardware Setup

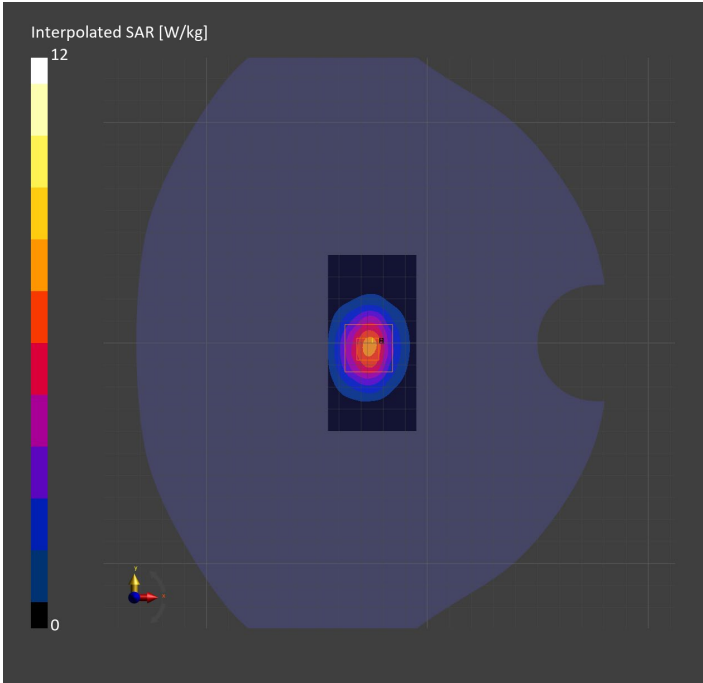
Probe Calibration Date	EX3DV4 - SN7589 2023-04-18	Phantom	Twin-SAM V5.0 (30deg probe tilt)
DAE Calibration Date	DAE4 Sn1544 2023-01-24	TSL Type	HBBL-600-10000
Software Version	16.2.4.2524		

Scans Setup

	Area Scan	Zoom Scan
Grid Extents [mm]	40.0 x 80.0	30.0 x 30.0 x 30.0
Grid Steps [mm]	10.0 x 10.0	5.0 x 5.0 x 1.5
Sensor Surface [mm]	3.0	1.4
Graded Grid	N/A	Yes
M2/M1 [%]		79.2
Dist 3dB Peak [mm]		9.1

Measurement Results

	Area Scan	Zoom Scan
psSAR1g [W/Kg]	5.74	5.71
psSAR10g [W/Kg]	2.63	2.63
Power Drift [dB]	N/A	0.02



System Performance Check Report for D750V3 - SN1019

Exposure Conditions

Frequency [MHz] Channel Number	750.000 0	TSL Permittivity	43.2
Group UID	CW 0--	TSL Conductivity [S/m]	0.878
Conversion Factor	8.93	Phantom Section TSL	Flat HSL

Hardware Setup

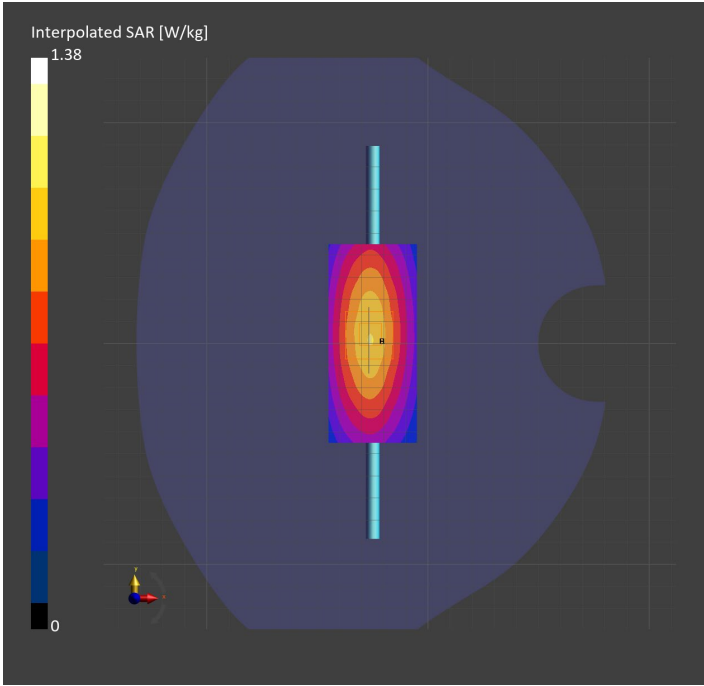
Probe Calibration Date	EX3DV4 - SN7448 2023-02-14	Phantom	Twin-SAM V5.0 (30deg probe tilt)
DAE Calibration Date	DAE4 Sn1472 2023-01-23	TSL Type	HBBL-600-10000
Software Version	16.2.4.2524		

Scans Setup

	Area Scan	Zoom Scan
Grid Extents [mm]	40.0 x 90.0	30.0 x 30.0 x 30.0
Grid Steps [mm]	10.0 x 15.0	6.0 x 6.0 x 1.5
Sensor Surface [mm]	3.0	1.4
Graded Grid	N/A	Yes
M2/M1 [%]		87.6
Dist 3dB Peak [mm]		> 15.0

Measurement Results

	Area Scan	Zoom Scan
psSAR1g [W/Kg]	0.905	0.919
psSAR10g [W/Kg]	0.606	0.606
Power Drift [dB]	N/A	-0.00



System Performance Check Report for D2600V2 - SN1036

Exposure Conditions

Frequency [MHz] Channel Number	2600.000 0	TSL Permittivity	39.6
Group UID	CW 0--	TSL Conductivity [S/m]	1.93
Conversion Factor	7.39	Phantom Section TSL	Flat HSL

Hardware Setup

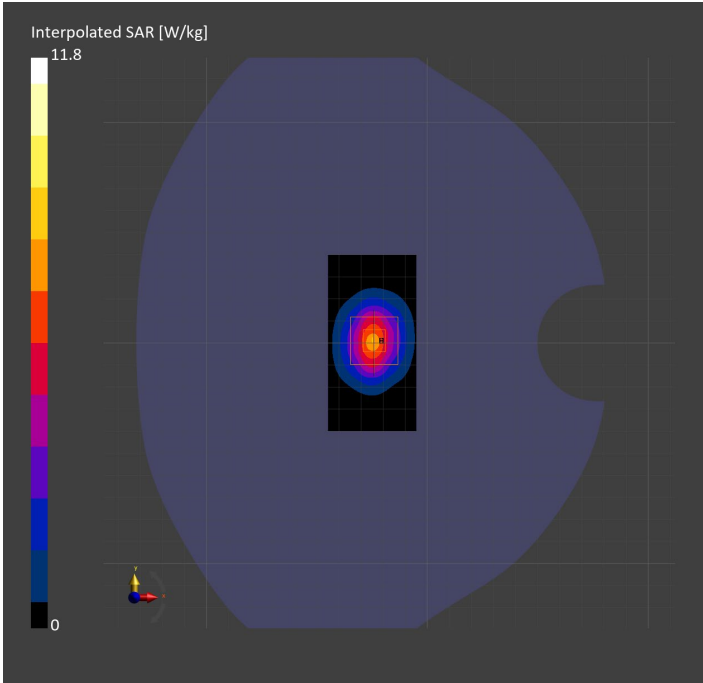
Probe Calibration Date	EX3DV4 - SN7448 2023-02-14	Phantom	Twin-SAM V5.0 (30deg probe tilt)
DAE Calibration Date	DAE4 Sn1472 2023-01-23	TSL Type	HBBL-600-10000
Software Version	16.2.4.2524		

Scans Setup

	Area Scan	Zoom Scan
Grid Extents [mm]	40.0 x 80.0	30.0 x 30.0 x 30.0
Grid Steps [mm]	10.0 x 10.0	5.0 x 5.0 x 1.5
Sensor Surface [mm]	3.0	1.4
Graded Grid	N/A	Yes
M2/M1 [%]		79.8
Dist 3dB Peak [mm]		9.0

Measurement Results

	Area Scan	Zoom Scan
psSAR1g [W/Kg]	5.59	5.58
psSAR10g [W/Kg]	2.51	2.53
Power Drift [dB]	N/A	0.00



System Performance Check Report for D2600V2 - SN1036

Exposure Conditions

Frequency [MHz] Channel Number	2600.000 0	TSL Permittivity	40.2
Group UID	CW 0--	TSL Conductivity [S/m]	1.90
Conversion Factor	7.33	Phantom Section TSL	Flat HSL

Hardware Setup

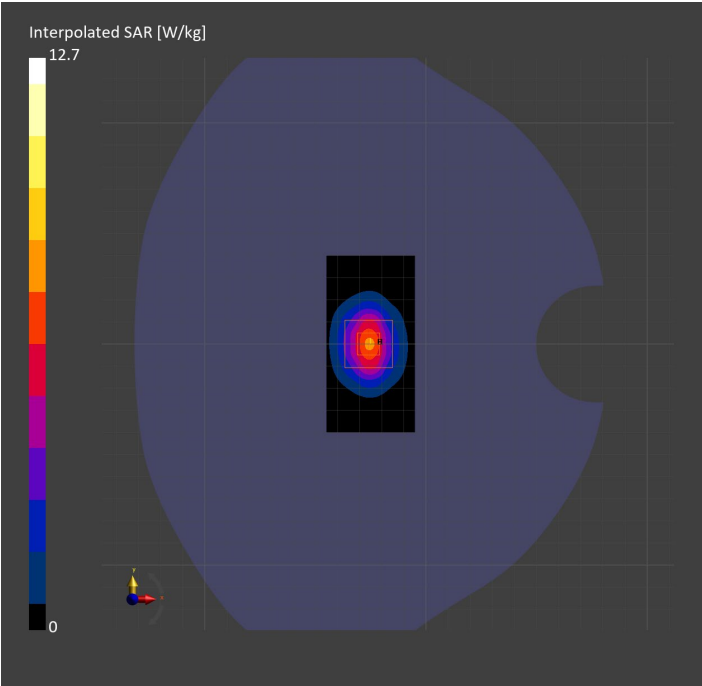
Probe Calibration Date	EX3DV4 - SN7808 2023-04-18	Phantom	Twin-SAM V8.0 (30deg probe tilt)
DAE Calibration Date	DAE4 Sn1796 2023-04-03	TSL Type	HBBL-600-10000
Software Version	16.2.4.2524		

Scans Setup

	Area Scan	Zoom Scan
Grid Extents [mm]	40.0 x 80.0	30.0 x 30.0 x 30.0
Grid Steps [mm]	10.0 x 10.0	5.0 x 5.0 x 1.5
Sensor Surface [mm]	3.0	1.4
Graded Grid	N/A	Yes
M2/M1 [%]		79.2
Dist 3dB Peak [mm]		9.0

Measurement Results

	Area Scan	Zoom Scan
psSAR1g [W/Kg]	5.73	5.96
psSAR10g [W/Kg]	2.54	2.72
Power Drift [dB]	N/A	-0.16



System Performance Check Report for D3700V2 - SN1110

Exposure Conditions

Frequency [MHz] Channel Number	3700.000 0	TSL Permittivity	38.3
Group UID	CW 0--	TSL Conductivity [S/m]	2.98
Conversion Factor	6.66	Phantom Section TSL	Flat HSL

Hardware Setup

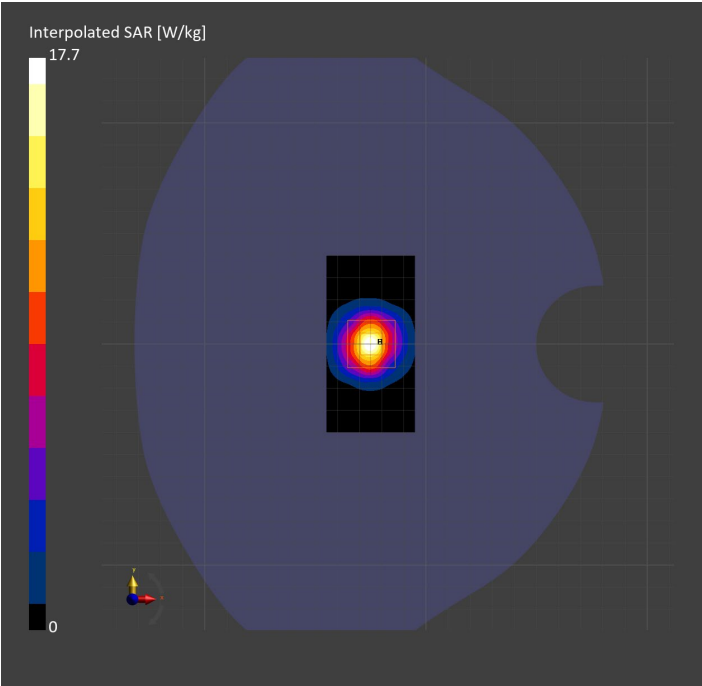
Probe Calibration Date	EX3DV4 - SN3990 2023-02-17	Phantom	Twin-SAM V5.0 (30deg probe tilt)
DAE Calibration Date	DAE4 Sn1545 2023-02-14	TSL Type	HBBL-600-10000
Software Version	16.2.4.2524		

Scans Setup

	Area Scan	Zoom Scan
Grid Extents [mm]	40.0 x 80.0	28.0 x 28.0 x 28.0
Grid Steps [mm]	10.0 x 10.0	5.0 x 5.0 x 1.4
Sensor Surface [mm]	3.0	1.4
Graded Grid	N/A	Yes
M2/M1 [%]		75.3
Dist 3dB Peak [mm]		8.6

Measurement Results

	Area Scan	Zoom Scan
psSAR1g [W/Kg]	6.62	6.74
psSAR10g [W/Kg]	2.45	2.55
Power Drift [dB]	N/A	0.00



System Performance Check Report for D3500V2 - SN1011

Exposure Conditions

Frequency [MHz] Channel Number	3500.000 0	TSL Permittivity	38.4
Group UID	CW 0--	TSL Conductivity [S/m]	2.77
Conversion Factor	6.79	Phantom Section TSL	Flat HSL

Hardware Setup

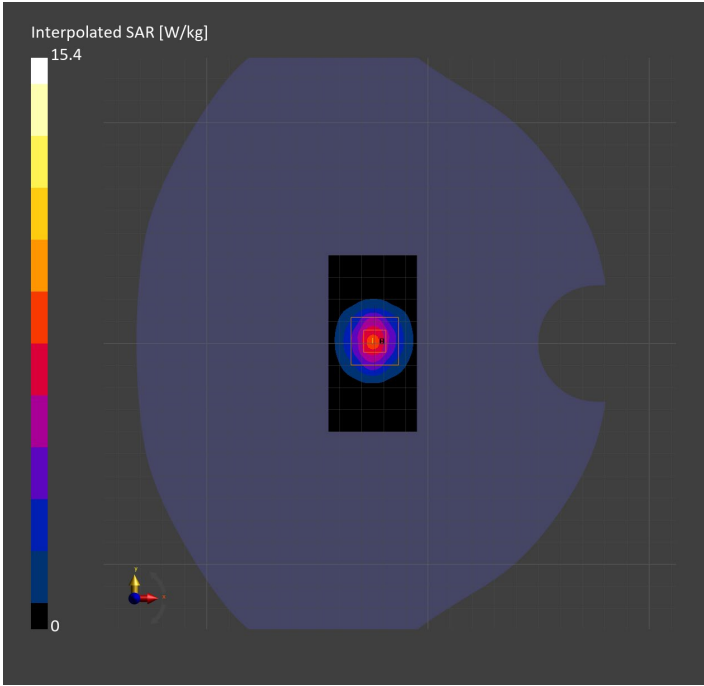
Probe Calibration Date	EX3DV4 - SN3990 2023-02-17	Phantom	Twin-SAM V5.0 (30deg probe tilt)
DAE Calibration Date	DAE4 Sn1545 2023-02-14	TSL Type	HBBL-600-10000
Software Version	16.2.4.2524		

Scans Setup

	Area Scan	Zoom Scan
Grid Extents [mm]	40.0 x 80.0	28.0 x 28.0 x 28.0
Grid Steps [mm]	10.0 x 10.0	5.0 x 5.0 x 1.4
Sensor Surface [mm]	3.0	1.4
Graded Grid	N/A	Yes
M2/M1 [%]		76.4
Dist 3dB Peak [mm]		8.1

Measurement Results

	Area Scan	Zoom Scan
psSAR1g [W/Kg]	5.89	6.08
psSAR10g [W/Kg]	2.30	2.40
Power Drift [dB]	N/A	-0.02



System Performance Check Report for D2600V2 - SN1036

Exposure Conditions

Frequency [MHz] Channel Number	2600.000 0	TSL Permittivity	37.9
Group UID	CW 0--	TSL Conductivity [S/m]	2.01
Conversion Factor	7.32	Phantom Section TSL	Flat HSL

Hardware Setup

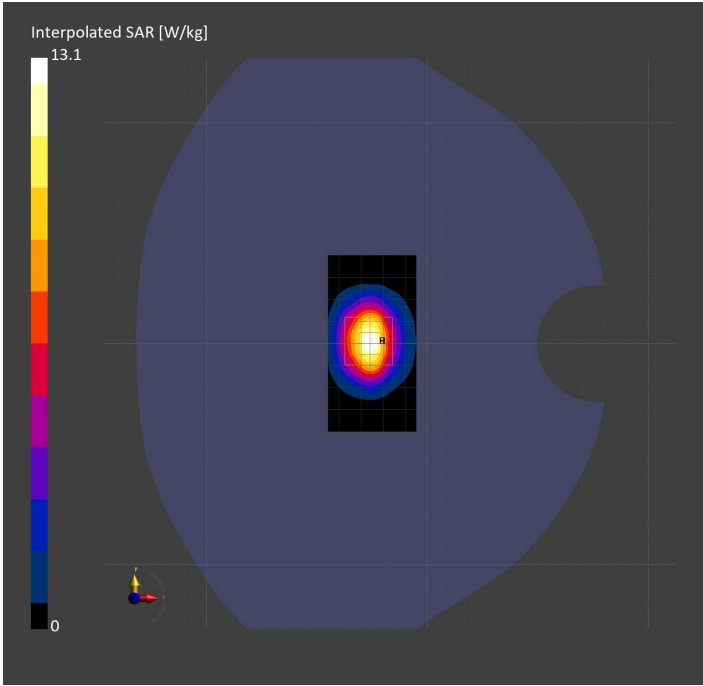
Probe Calibration Date	EX3DV4 - SN3885 2022-09-20	Phantom	Twin-SAM V5.0 (30deg probe tilt)
DAE Calibration Date	DAE4 Sn1548 2023-02-14	TSL Type	HBBL-600-10000
Software Version	16.2.4.2524		

Scans Setup

	Area Scan	Zoom Scan
Grid Extents [mm]	40.0 x 80.0	30.0 x 30.0 x 30.0
Grid Steps [mm]	10.0 x 10.0	5.0 x 5.0 x 1.5
Sensor Surface [mm]	3.0	1.4
Graded Grid	N/A	Yes
M2/M1 [%]		78.8
Dist 3dB Peak [mm]		9.0

Measurement Results

	Area Scan	Zoom Scan
psSAR1g [W/Kg]	6.09	6.06
psSAR10g [W/Kg]	2.73	2.72
Power Drift [dB]	N/A	0.01



System Performance Check Report for D2300V2 - SN1058

Exposure Conditions

Frequency [MHz] Channel Number	2300.000 0	TSL Permittivity	37.9
Group UID	CW 0--	TSL Conductivity [S/m]	1.66
Conversion Factor	7.71	Phantom Section TSL	Flat HSL

Hardware Setup

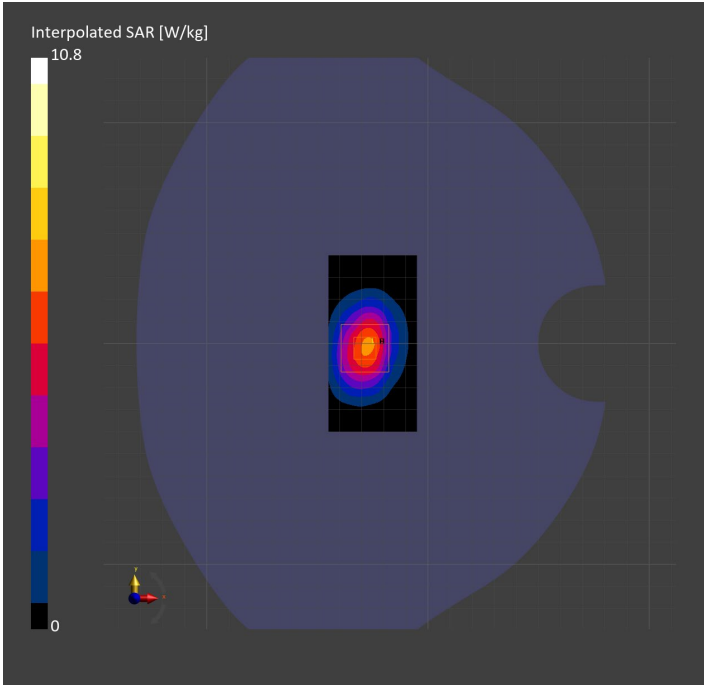
Probe Calibration Date	EX3DV4 - SN7482 2023-04-18	Phantom	Twin-SAM V8.0 (30deg probe tilt)
DAE Calibration Date	DAE4 Sn1380 2023-02-14	TSL Type	HBBL-600-10000
Software Version	16.2.4.2524		

Scans Setup

	Area Scan	Zoom Scan
Grid Extents [mm]	40.0 x 80.0	30.0 x 30.0 x 30.0
Grid Steps [mm]	10.0 x 10.0	5.0 x 5.0 x 1.5
Sensor Surface [mm]	3.0	1.4
Graded Grid	N/A	Yes
M2/M1 [%]		79.1
Dist 3dB Peak [mm]		9.1

Measurement Results

	Area Scan	Zoom Scan
psSAR1g [W/Kg]	5.18	5.25
psSAR10g [W/Kg]	2.55	2.52
Power Drift [dB]	N/A	-0.09



System Performance Check Report for D3500V2 - SN1060

Exposure Conditions

Frequency [MHz] Channel Number	3500.000 0	TSL Permittivity	39.5
Group UID	CW 0--	TSL Conductivity [S/m]	2.78
Conversion Factor	6.87	Phantom Section TSL	Flat HSL

Hardware Setup

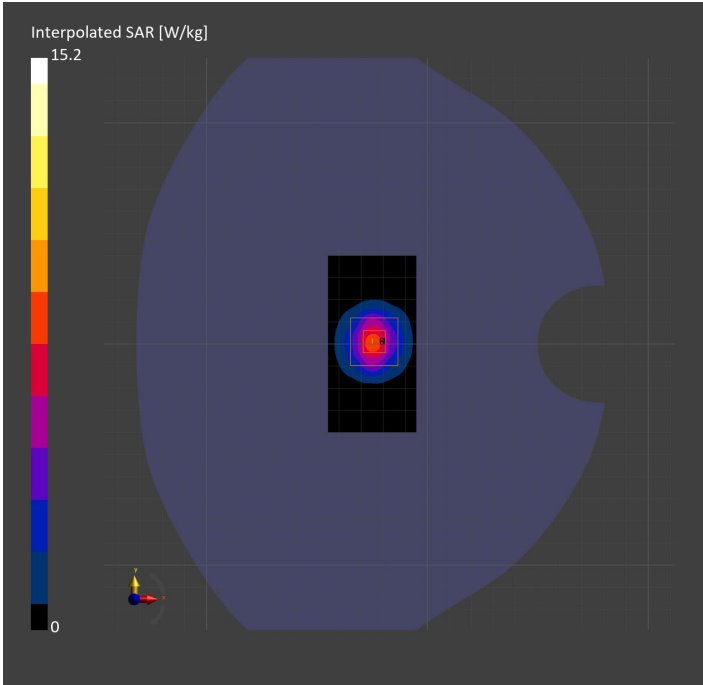
Probe Calibration Date	EX3DV4 - SN7335 2023-01-26	Phantom	Twin-SAM V8.0 (30deg probe tilt)
DAE Calibration Date	DAE4ip Sn1619 2023-04-18	TSL Type	HBBL-600-10000
Software Version	16.2.4.2524		

Scans Setup

	Area Scan	Zoom Scan
Grid Extents [mm]	40.0 x 80.0	28.0 x 28.0 x 28.0
Grid Steps [mm]	10.0 x 10.0	5.0 x 5.0 x 1.4
Sensor Surface [mm]	3.0	1.4
Graded Grid	N/A	Yes
M2/M1 [%]		77.2
Dist 3dB Peak [mm]		8.6

Measurement Results

	Area Scan	Zoom Scan
psSAR1g [W/Kg]	6.06	6.10
psSAR10g [W/Kg]	2.33	2.36
Power Drift [dB]	N/A	-0.00



System Performance Check Report for D3700V2 - SN1110

Exposure Conditions

Frequency [MHz] Channel Number	3700.000 0	TSL Permittivity	37.4
Group UID	CW 0--	TSL Conductivity [S/m]	2.97
Conversion Factor	6.92	Phantom Section TSL	Flat HSL

Hardware Setup

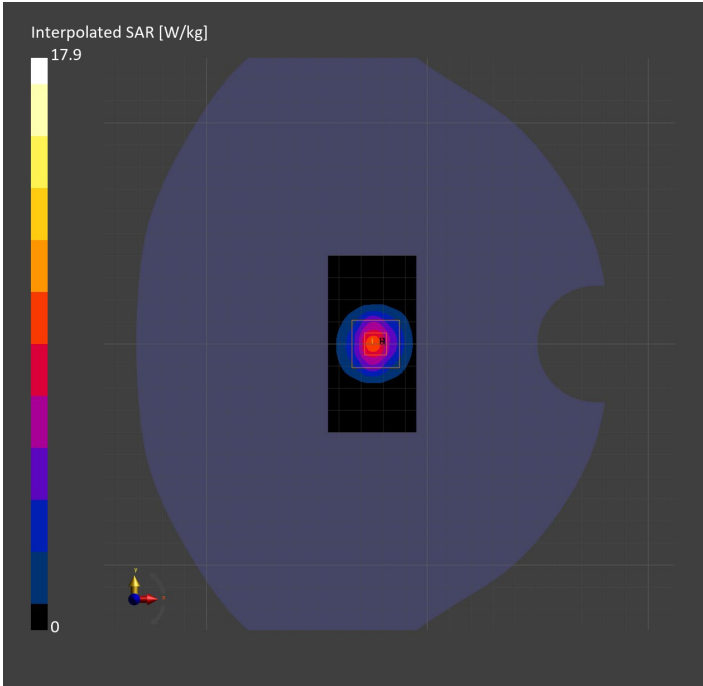
Probe Calibration Date	EX3DV4 - SN7335 2023-01-26	Phantom	Twin-SAM V8.0 (30deg probe tilt)
DAE Calibration Date	DAE4ip Sn1619 2023-04-18	TSL Type	HBBL-600-10000
Software Version	16.2.4.2524		

Scans Setup

	Area Scan	Zoom Scan
Grid Extents [mm]	40.0 x 80.0	28.0 x 28.0 x 28.0
Grid Steps [mm]	10.0 x 10.0	5.0 x 5.0 x 1.4
Sensor Surface [mm]	3.0	1.4
Graded Grid	N/A	Yes
M2/M1 [%]		76.2
Dist 3dB Peak [mm]		8.6

Measurement Results

	Area Scan	Zoom Scan
psSAR1g [W/Kg]	6.93	6.83
psSAR10g [W/Kg]	2.57	2.56
Power Drift [dB]	N/A	-0.12



System Performance Check Report for D3900V2 - SN1093

Exposure Conditions

Frequency [MHz] Channel Number	3900.000 0	TSL Permittivity	39.3
Group UID	CW 0--	TSL Conductivity [S/m]	3.16
Conversion Factor	6.15	Phantom Section TSL	Flat HSL

Hardware Setup

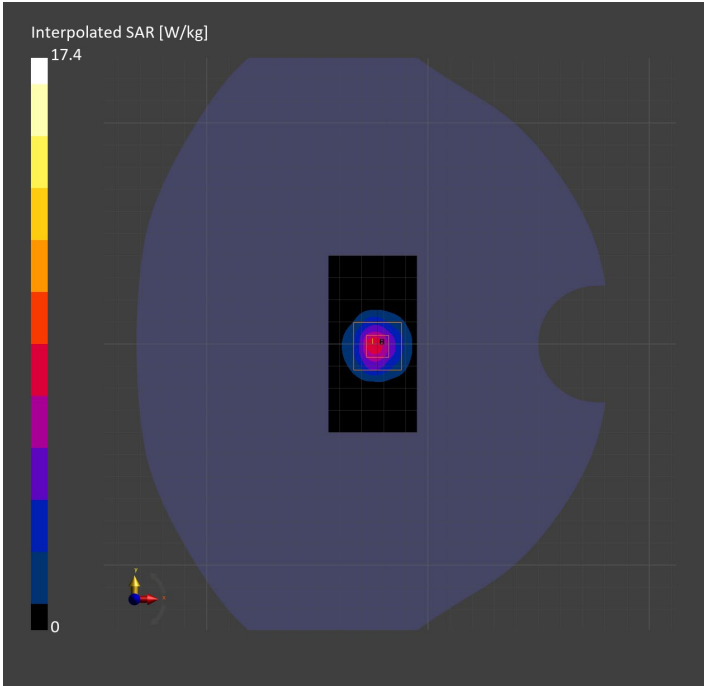
Probe Calibration Date	EX3DV4 - SN7463 2023-04-19	Phantom	Twin-SAM V8.0 (30deg probe tilt)
DAE Calibration Date	DAE4 Sn1673 2023-05-12	TSL Type	HBBL-600-10000
Software Version	16.2.4.2524		

Scans Setup

	Area Scan	Zoom Scan
Grid Extents [mm]	40.0 x 80.0	28.0 x 28.0 x 28.0
Grid Steps [mm]	10.0 x 10.0	5.0 x 5.0 x 1.4
Sensor Surface [mm]	3.0	1.4
Graded Grid	N/A	Yes
M2/M1 [%]		74.5
Dist 3dB Peak [mm]		8.1

Measurement Results

	Area Scan	Zoom Scan
psSAR1g [W/Kg]	5.73	6.36
psSAR10g [W/Kg]	2.04	2.27
Power Drift [dB]	N/A	-0.20



System Performance Check Report for D3500V2 - SN1011

Exposure Conditions

Frequency [MHz] Channel Number	3500.000 0	TSL Permittivity	38.8
Group UID	CW 0--	TSL Conductivity [S/m]	2.78
Conversion Factor	6.21	Phantom Section TSL	Flat HSL

Hardware Setup

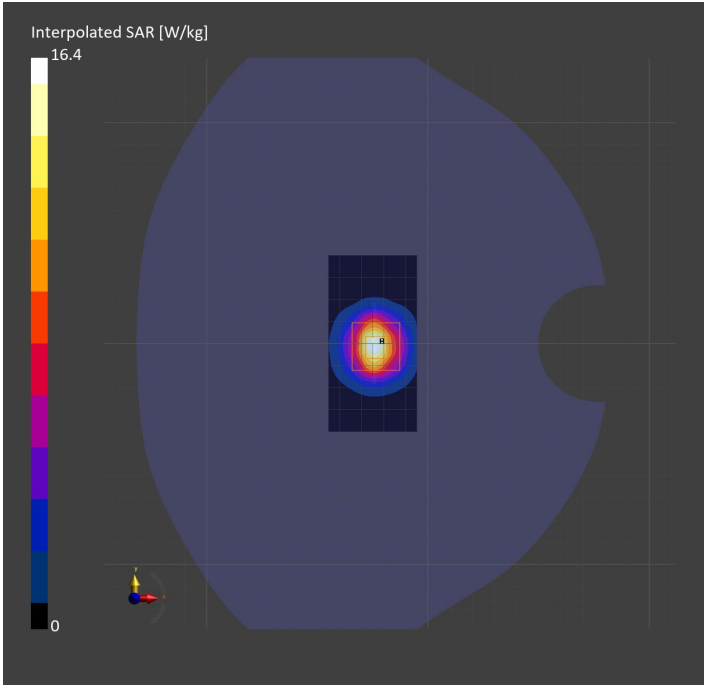
Probe Calibration Date	EX3DV4 - SN7463 2023-04-19	Phantom	Twin-SAM V8.0 (30deg probe tilt)
DAE Calibration Date	DAE4 Sn1673 2023-05-12	TSL Type	HBBL-600-10000
Software Version	16.2.4.2524		

Scans Setup

	Area Scan	Zoom Scan
Grid Extents [mm]	40.0 x 80.0	28.0 x 28.0 x 28.0
Grid Steps [mm]	10.0 x 10.0	5.0 x 5.0 x 1.4
Sensor Surface [mm]	3.0	1.4
Graded Grid	N/A	Yes
M2/M1 [%]		74.3
Dist 3dB Peak [mm]		8.6

Measurement Results

	Area Scan	Zoom Scan
psSAR1g [W/Kg]	6.09	6.31
psSAR10g [W/Kg]	2.37	2.50
Power Drift [dB]	N/A	0.00



System Performance Check Report for D4900V2 - SN1065

Exposure Conditions

Frequency [MHz] Channel Number	4900.000 0	TSL Permittivity	35.9
Group UID	CW 0--	TSL Conductivity [S/m]	4.29
Conversion Factor	6.28	Phantom Section TSL	Flat HSL

Hardware Setup

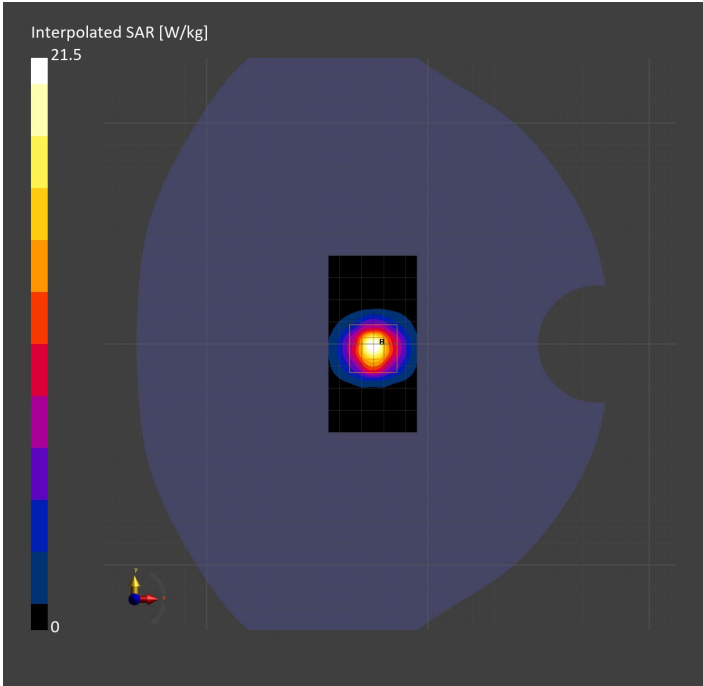
Probe Calibration Date	EX3DV4 - SN7356 2023-03-17	Phantom	Twin-SAM V8.0 (30deg probe tilt)
DAE Calibration Date	DAE4 Sn1798 2023-05-02	TSL Type	HBBL-600-10000
Software Version	16.2.4.2448		

Scans Setup

	Area Scan	Zoom Scan
Grid Extents [mm]	40.0 x 80.0	25.0 x 25.0 x 25.0
Grid Steps [mm]	10.0 x 10.0	4.0 x 4.0 x 1.4
Sensor Surface [mm]	3.0	1.4
Graded Grid	N/A	Yes
M2/M1 [%]		67.3
Dist 3dB Peak [mm]		8.2

Measurement Results

	Area Scan	Zoom Scan
psSAR1g [W/Kg]	6.04	6.30
psSAR10g [W/Kg]	1.94	2.02
Power Drift [dB]	N/A	0.01



System Performance Check Report for D3500V2 - SN1060

Exposure Conditions

Frequency [MHz] Channel Number	3500.000 0	TSL Permittivity	39.0
Group UID	CW 0--	TSL Conductivity [S/m]	2.85
Conversion Factor	7.04	Phantom Section TSL	Flat HSL

Hardware Setup

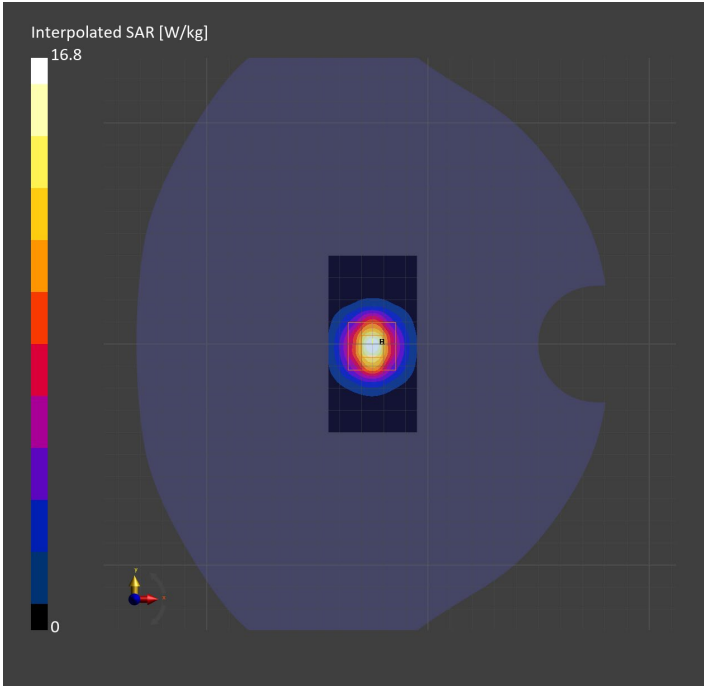
Probe Calibration Date	EX3DV4 - SN7356 2023-03-17	Phantom	Twin-SAM V8.0 (30deg probe tilt)
DAE Calibration Date	DAE4 Sn1798 2023-05-02	TSL Type	HBBL-600-10000
Software Version	16.2.4.2524		

Scans Setup

	Area Scan	Zoom Scan
Grid Extents [mm]	40.0 x 80.0	28.0 x 28.0 x 28.0
Grid Steps [mm]	10.0 x 10.0	5.0 x 5.0 x 1.4
Sensor Surface [mm]	3.0	1.4
Graded Grid	N/A	Yes
M2/M1 [%]		76.3
Dist 3dB Peak [mm]		9.0

Measurement Results

	Area Scan	Zoom Scan
psSAR1g [W/Kg]	6.52	6.69
psSAR10g [W/Kg]	2.52	2.61
Power Drift [dB]	N/A	-0.01



System Performance Check Report for D2300V2 - SN1058

Exposure Conditions

Frequency [MHz] Channel Number	2300.000 0	TSL Permittivity	37.5
Group UID	CW 0--	TSL Conductivity [S/m]	1.70
Conversion Factor	8.2	Phantom Section TSL	Flat HSL

Hardware Setup

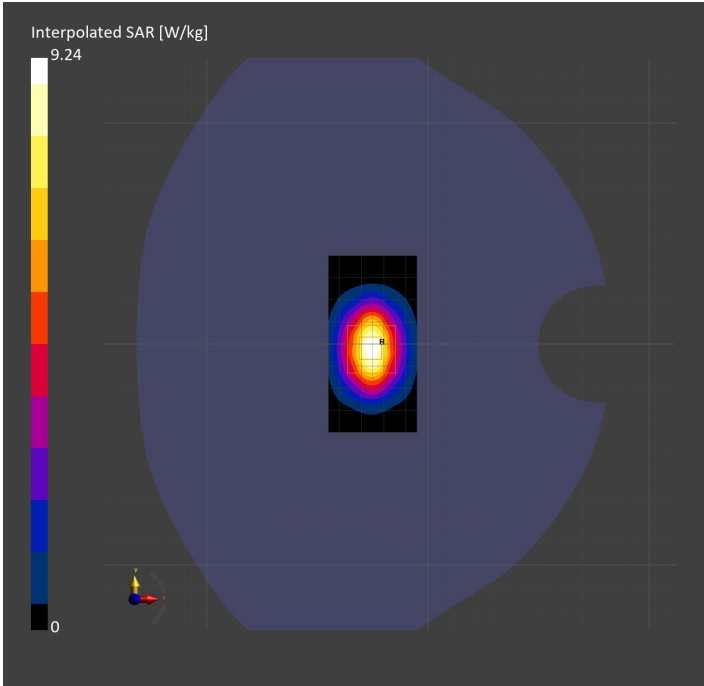
Probe Calibration Date	EX3DV4 - SN7356 2023-03-17	Phantom	Twin-SAM V8.0 (30deg probe tilt)
DAE Calibration Date	DAE4 Sn1798 2023-05-02	TSL Type	HBBL-600-10000
Software Version	16.2.4.2524		

Scans Setup

	Area Scan	Zoom Scan
Grid Extents [mm]	40.0 x 80.0	30.0 x 30.0 x 30.0
Grid Steps [mm]	10.0 x 10.0	5.0 x 5.0 x 1.5
Sensor Surface [mm]	3.0	1.4
Graded Grid	N/A	Yes
M2/M1 [%]		80.9
Dist 3dB Peak [mm]		9.0

Measurement Results

	Area Scan	Zoom Scan
psSAR1g [W/Kg]	4.67	4.63
psSAR10g [W/Kg]	2.24	2.22
Power Drift [dB]	N/A	0.01



System Performance Check Report for CLA-13 - SN1008

Exposure Conditions

Frequency [MHz] Channel Number	13.000 0	TSL Permittivity	57.5
Group UID	CW 0--	TSL Conductivity [S/m]	0.727
Conversion Factor	19.03	Phantom Section TSL	Flat HSL

Hardware Setup

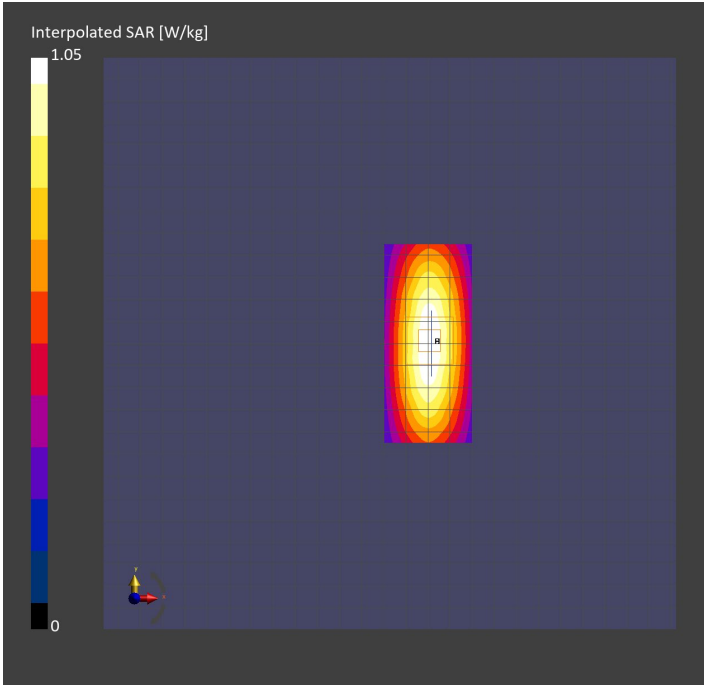
Probe Calibration Date	EX3DV4 - SN3989 2023-01-26	Phantom	ELI V8.0 (20deg probe tilt)
DAE Calibration Date	DAE4 Sn1257 2022-09-20	TSL Type	HBBL4-250V3
Software Version	16.2.4.2524		

Scans Setup

	Area Scan	Zoom Scan
Grid Extents [mm]	40.0 x 90.0	30.0 x 30.0 x 30.0
Grid Steps [mm]	10.0 x 15.0	6.0 x 6.0 x 1.5
Sensor Surface [mm]	3.0	1.4
Graded Grid	N/A	Yes
M2/M1 [%]		75.4
Dist 3dB Peak [mm]		15.2

Measurement Results

	Area Scan	Zoom Scan
psSAR1g [W/Kg]	0.546	0.522
psSAR10g [W/Kg]	0.439	0.321
Power Drift [dB]	N/A	-0.03



System Performance Check Report for D3500V2 - SN1011

Exposure Conditions

Frequency [MHz] Channel Number	3500.000 0	TSL Permittivity	39.6
Group UID	CW 0--	TSL Conductivity [S/m]	2.79
Conversion Factor	6.78	Phantom Section TSL	Flat HSL

Hardware Setup

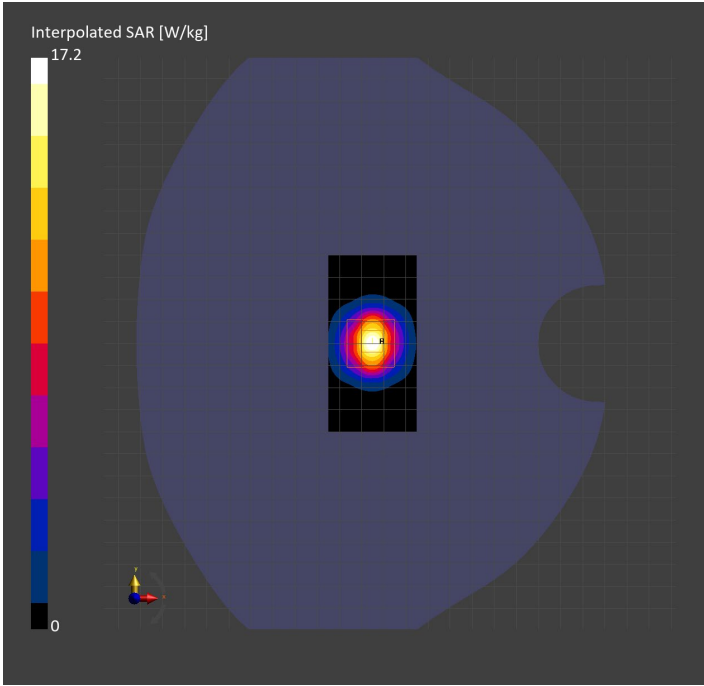
Probe Calibration Date	EX3DV4 - SN3989 2023-01-26	Phantom	Twin-SAM V8.0 (30deg probe tilt)
DAE Calibration Date	DAE4 Sn1547 2023-04-18	TSL Type	HBBL-600-10000
Software Version	16.2.4.2524		

Scans Setup

	Area Scan	Zoom Scan
Grid Extents [mm]	40.0 x 80.0	28.0 x 28.0 x 28.0
Grid Steps [mm]	10.0 x 10.0	5.0 x 5.0 x 1.4
Sensor Surface [mm]	3.0	1.4
Graded Grid	N/A	Yes
M2/M1 [%]		75.8
Dist 3dB Peak [mm]		8.3

Measurement Results

	Area Scan	Zoom Scan
psSAR1g [W/Kg]	6.61	6.79
psSAR10g [W/Kg]	2.53	2.66
Power Drift [dB]	N/A	-0.06



System Performance Check Report for D1640V2 - SN324

Exposure Conditions

Frequency [MHz] Channel Number	1640.000 0	TSL Permittivity	40.9
Group UID	CW 0--	TSL Conductivity [S/m]	1.24
Conversion Factor	8.86	Phantom Section TSL	Flat HSL

Hardware Setup

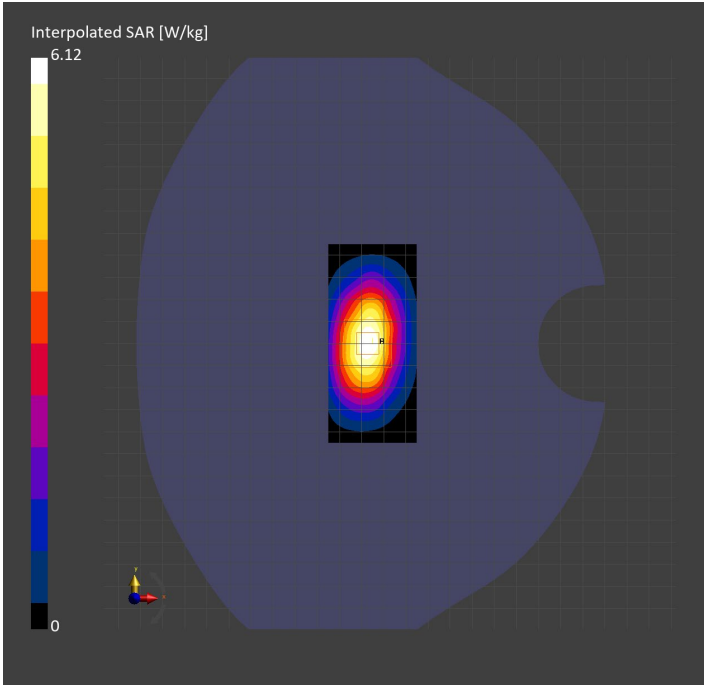
Probe Calibration Date	EX3DV4 - SN3989 2023-01-26	Phantom	Twin-SAM V8.0 (30deg probe tilt)
DAE Calibration Date	DAE4 Sn1547 2023-04-18	TSL Type	HBBL-600-10000
Software Version	16.2.4.2524		

Scans Setup

	Area Scan	Zoom Scan
Grid Extents [mm]	40.0 x 90.0	30.0 x 30.0 x 30.0
Grid Steps [mm]	10.0 x 15.0	6.0 x 6.0 x 1.5
Sensor Surface [mm]	3.0	1.4
Graded Grid	N/A	Yes
M2/M1 [%]		84.8
Dist 3dB Peak [mm]		10.8

Measurement Results

	Area Scan	Zoom Scan
psSAR1g [W/Kg]	3.42	3.56
psSAR10g [W/Kg]	1.91	1.97
Power Drift [dB]	N/A	-0.03



System Performance Check Report for D750V3 - SN1019

Exposure Conditions

Frequency [MHz] Channel Number	750.000 0	TSL Permittivity	43.6
Group UID	CW 0--	TSL Conductivity [S/m]	0.878
Conversion Factor	8.6	Phantom Section TSL	Flat HSL

Hardware Setup

Probe Calibration Date	EX3DV4 - SN3749 2023-01-27	Phantom	Twin-SAM V8.0 (30deg probe tilt)
DAE Calibration Date	DAE4 Sn1784 2023-04-03	TSL Type	HBBL-600-10000
Software Version	16.2.4.2524		

Scans Setup

	Area Scan	Zoom Scan
Grid Extents [mm]	40.0 x 90.0	30.0 x 30.0 x 30.0
Grid Steps [mm]	10.0 x 15.0	6.0 x 6.0 x 1.5
Sensor Surface [mm]	3.0	1.4
Graded Grid	N/A	Yes
M2/M1 [%]		89.2
Dist 3dB Peak [mm]		> 15.0

Measurement Results

	Area Scan	Zoom Scan
psSAR1g [W/Kg]	0.818	0.831
psSAR10g [W/Kg]	0.547	0.558
Power Drift [dB]	N/A	0.12

