

Edifier International Limited
P.O. Box 6264
General Post Office
Hong Kong
Tel: +852 2522 6989
Fax: +852 2522 1989
www.edifier.com
© 2018 Edifier International Limited. All rights reserved.
Printed in China

NOTICE:
For the need of technical improvement and system upgrade, information contained herein may be subject to change from time to time without prior notice.
Products of EDIFIER will be customized for different applications. Pictures and illustrations shown on this manual may be slightly different from actual product. Picture for reference only, actual product prevails.

EDIFIER®


S3000 Pro


Multimedia Speaker

User manual | Manuel d'utilisateur | Manual de usuario | Bedienungsanleitung | Manuale dell'utente | Manual do utilizador

Important safety instruction

- Please read the instructions carefully. Keep it in safe place for future reference.
- Use only accessories approved by the manufacturer.
- Install the instrument properly by following the instructions in the device connection section.
- Using the product in a 0-35°C environment is recommended.
- To reduce the risk of fire and electric shock, do not expose the product to rain or moisture.
- Do not use this product near water. Do not immerse the product into any liquid or have it exposed to dripping or splashing.
- Do not install or use this product near any heat source (e.g. radiator, heater, stove, or other devices that generate heat).
- Do not place any object filled with liquids, such as vases on the product, neither should any open fire, such as lighted candles be placed on the product.
- Do not block any ventilation openings. Do not insert any object into ventilation openings or slots. It may cause fire or electric shock.
- Keep sufficient clearance around the product to maintain good ventilation (minimum 5cm is recommended).
- Do not force a plug into the jack. Before connection, check for blockage in the jack and whether the plug matches the jack and is oriented to the right direction.
- Keep the provided accessories and parts (such as screws) away from children to prevent from being swallowed by mistake.
- Do not open or remove the housing yourself. It may expose you to dangerous voltage or other hazardous risks. Regardless the cause of damage (such as damaged wire or plug, exposure to liquid splash or foreign object falling in, exposure to rain or moisture, product not working or being dropped, etc.), the repair has to be performed by an authorized service professional immediately.
- Before cleaning the product with dry cloth, always turn off the product and disconnect the power plug first.
- Never use strong acid, alkali, gasoline, alcohol, or other chemical solvents to clean the product surface. Use only neutral solvent or clear water for cleaning.

 Excessively loud music may lead to hearing loss. Please keep the volume in a safe range.

 Correct Disposal of this product. This marking indicates that this product should not be disposed with other household wastes throughout the EU. To prevent possible harm to the environment or human health from uncontrolled waste disposal, recycle it responsibly to promote the sustainable reuse of material resources. To return your used device, please use the return and collection systems or contact the retailer where the product was purchased. They can take this product for environmental safe recycling.


 Use only with the cart, stand, tripod, bracket, or table specified by the manufacturer, or sold with the apparatus. When a cart is used, use caution when moving the cart/apparatus combination to avoid injury from tip-over.


English

Important safety instruction


Power warning:

- Place the product near the power outlet for easy use.
- Before use, make sure that the operating voltage is the same as your local power supply. Correct operating voltage can be found on the product plate.
- For safety purpose, unplug the product during lightning storms or when unused for extended periods of time.
- Under normal conditions, the power supply may get hot. Please keep good ventilation in the area and exercise caution.
- Safety warning labels on the housing or bottom of the product or power adaptor.

 This symbol is to alert the user to the presence of un-insulated dangerous voltage within the product's enclosure that may be of sufficient magnitude to constitute a risk of electric shock to persons.

 This symbol is to warn the user not to disassemble the enclosure of the product and there is no user-replaceable part inside. Take the product to an authorized service center for repair.

 This symbol indicates that the product is for indoor use only.

 This symbol indicates that the product is a CLASS II or double insulated electrical device with no earth requirement.

The MAINS plug is used as the disconnect device, the disconnect device shall remain readily operable.

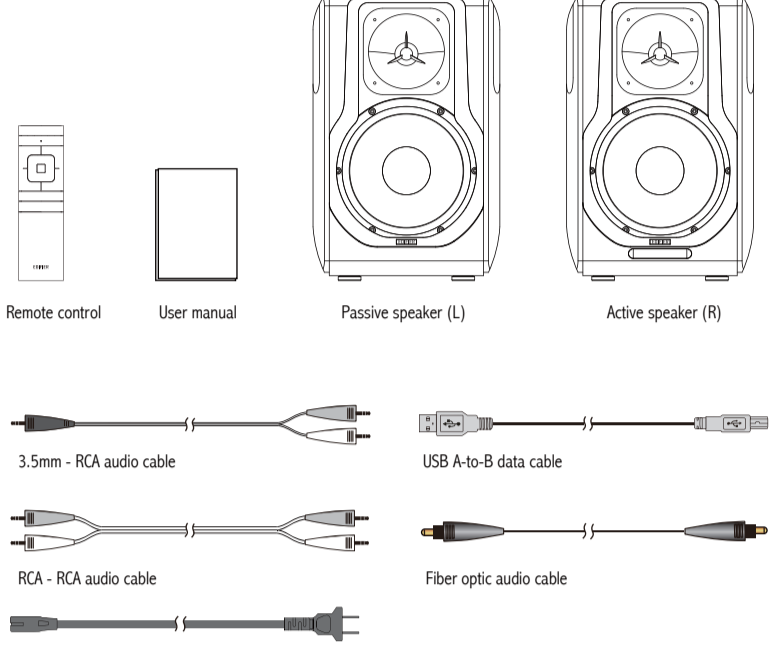
For wireless product:

- Wireless product may generate shortwave radio frequencies and interfere with the normal use of other electronic devices or medical equipment.
- Turn off the product when it's disallowed. Do not use the product in medical facilities, on airplane, at gas stations, near automatic gates, automatic fire alarm system or other automated devices.
- Do not use the product in the vicinity of a pacemaker within a 20cm range. The radio waves may affect the normal operation of the pacemaker or other medical devices.

English

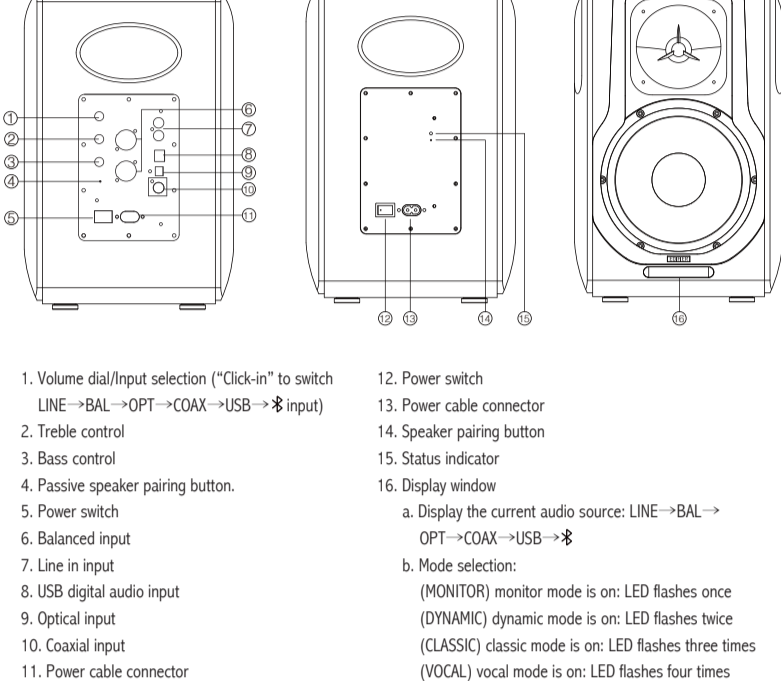
Unpack the box

Box Contents



English

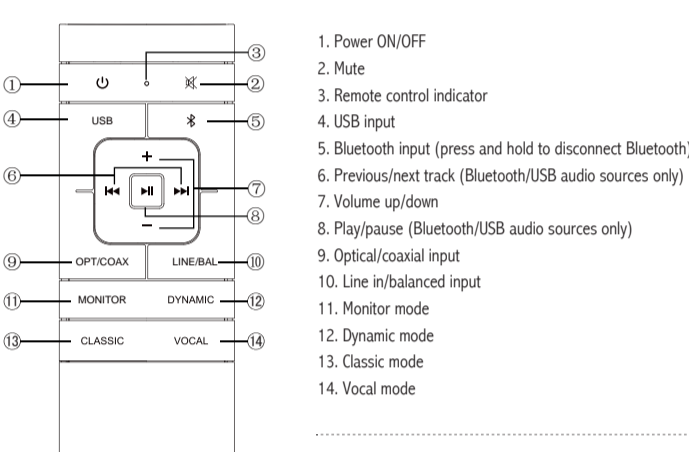
Illustrations



English

Remote control illustration

Point the remote control to the remote receiving window on the speaker, the optimum operational distance is 7 meters.

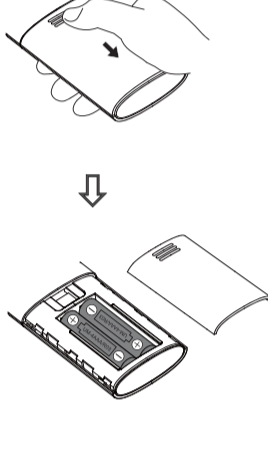


Four modes:
CLASSIC mode: reproduces a classic HiFi sound.
MONITOR mode: features a flat audio response curve, for sound with no coloration.
DYNAMIC mode: more punch, more dynamics.
VOCAL mode: human voice emphasized, singer's position will seem closer to listener.

Note: After being turned off/on or when audio source is changed, the speaker will return to CLASSIC mode by default, please manually set to other modes via remote control.

English

Remote control illustration

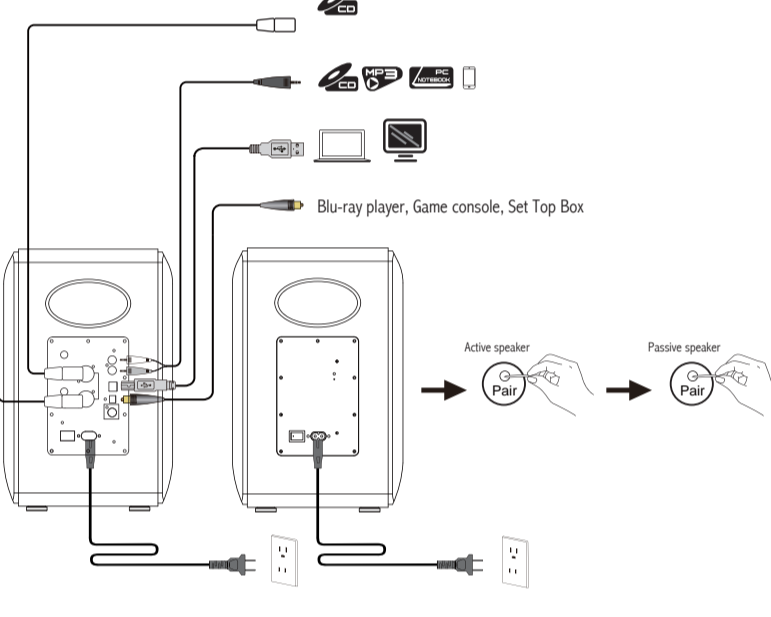


- As the illustration shows, press remote control battery cover downward with thumb and follow the arrow direction to remove cover, and place two AAA batteries (note the "+" and "-" pole) into the remote control.
- The battery life is normally about 6 months; please replace it when the remote control is not sensitive or the control distance to be shortened.
- Never use old and new batteries together.

Note:
1. Do not place the remote control in places that are hot and humid.
2. Do not charge the batteries.
3. Remove the batteries when unused for a long period of time to avoid battery leakage.
4. The battery should not be exposed to excessive heat such as direct sun, fire or similar.
5. Danger of explosion if battery is incorrectly replaced. Replace only with the same or equivalent type.

English

Connection



- As the illustration shows, connect to audio sources using the corresponding audio cable.
- Connect speakers to power source using power cables and turn power switch on, the speakers should be ready to go. LED light on the active speaker will display current audio source. Please select the correct audio source with the corresponding connection.

English

Connection

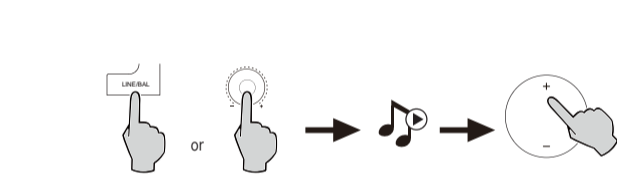
The active speaker (R) and passive speaker (L) have been paired before leaving the factory. The wireless connection will resume automatically when both speakers are powered on and the red indicator on the passive speaker is lit. If the wireless connection fails to resume, please follow the steps below to re-pair.

- Power on the active speaker; then press and hold the "Pair" button on the back panel of the active speaker (R), the current mode's LED light in the display window will blink rapidly.
- Press and hold the "Pair" button on the back panel of the passive speaker (L), the red indicator on the passive speaker (L) will blink rapidly.
- Wait until the red indicator on the passive speaker (L) is lit constantly. Then the pairing is complete and wireless connection is made.

Note:
If the red indicator on the passive speaker (L) is in a breathing pattern, it indicates that there is no connection or the connection is unsuccessful, please repeat the above steps.

English

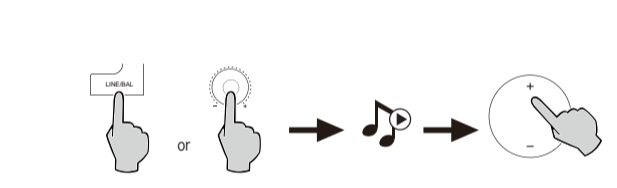
Balanced Input



- Connect audio source (CD player, decoder, etc.) to balanced output port on the rear panel of the active speaker using XLR balanced audio cable (XLR cable not included).
- Press the "LINE/BAL" button on the remote control, or press the "Volume dial/Input selection" dial on the rear panel of the active speaker until LED indicator on the active speaker displays "BAL".
- Play music on the connected device and adjust the settings to a desired level.

English

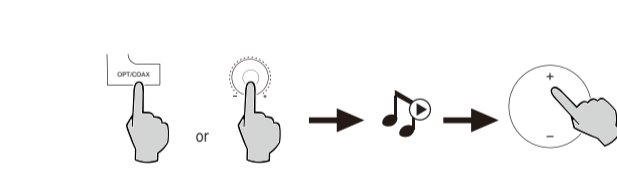
Line In Input



- Connect audio source (mobile phone, tablet, etc.) to Line in input port (note color matching) on the rear panel of the active speaker using 3.5mm-RCA audio cable or RCA-RCA audio cable.
- Press the "LINE/BAL" button on the remote control, or press the "Volume dial/Input selection" dial on the rear panel of the active speaker until display window on the active speaker displays "LINE".
- Play music on the connected device and adjust the settings to a desired level.

English

Optical/Coaxial Input

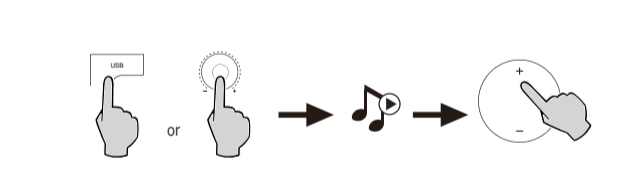


- Connect audio source (Blu-ray player, Set Top Box, etc.) to optical or coaxial input port on the rear panel of the active speaker using fiber optic audio cable or coaxial cable (coaxial cable not included).
- Press the "OPT/COAX" button on the remote control, or press the "Volume dial/Input selection" dial on the rear panel of the active speaker until display window on the active speaker displays "OPT" or "COAX".
- Play music on the connected device and adjust the settings to a desired level.

Note:
Only the standard PCM audio signals (44.1KHz/48KHz/96KHz/192KHz) function in optical/coaxial mode.

English

USB Digital Audio Input



- Connect audio source (mobile phone, tablet, etc.) to Line in input port (note color matching) on the rear panel of the active speaker using 3.5mm-RCA audio cable or RCA-RCA audio cable.
- Press the "LINE/BAL" button on the remote control, or press the "Volume dial/Input selection" dial on the rear panel of the active speaker until display window on the active speaker displays "LINE".
- Play music on the connected device and adjust the settings to a desired level.

USB interface chip in the S3000 Pro is a XNOS chip used by high-end audio equipment. After being connected to PC, USB interface will directly extract and play back digital audio signal in a manner similar to the "USB external sound card", to avoid sound degradation and dynamic range compression caused by digital-to-analog conversion of PC sound card, and to ensure the restoration of original sound quality.

- Please refer to the details on page 11 to download and install the driver program.
- Connect USB A type port on PC to USB B type input port on the rear panel of the active speaker using USB A-to-B data cable.
- Press the "USB" button on the remote control, or press the "Volume dial/Input selection" dial on the rear panel of the active speaker until display window on the active speaker displays "USB".
- Play music on the connected device and adjust the settings to a desired level.

English

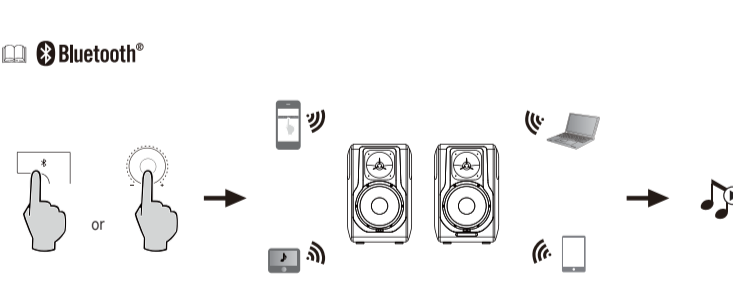
USB Digital Audio Input

- Note:**
Windows 7 / windows 10 operating systems only support USB Audio Class I audio transmission (only supports 2 channel audio signal, the highest sampling rate is 96KHz). The USB interface chip in the S3000 Pro uses USB Audio Class 2 audio transmission to support the 192KHz audio signal. For Windows 7 / windows 10 operating system users, using the S3000 Pro speaker you will need to download the special driver.
The address is <http://www.edifier.com/zh/zh/speakers/S3000-Pro>
Microsoft has stopped maintaining the XP system, we cannot provide a driver for this OS but it can be used normally. There may be risk warning during installation, please install according to your needs.
USB driver in Apple Mac operating system supports USB Audio Class I and Class 2 audio transmission by default, therefore driver program installation is not needed.
For driver program introduction, please refer to the description on the download page, or click the following link to check: <http://www.wms.com/support/usb-audio-driver-support>
5. If you need to buy USB A-to-B data cable, you can search for and buy it on various e-commerce platforms.
6. In USB mode, only PCM signal with 44.1KHz/48KHz/96KHz/192KHz can be decoded.

Note:
The play control under USB input belongs to USB HID control, this control needs support of player software, and so there may be compatibility differences for different audio player software.

English

Bluetooth Input



- Press the "X" button on the remote control, or press the "Volume dial/Input selection" dial on the rear panel of the active speaker until display window on the active speaker displays "X".
- Set your Bluetooth device (mobile phone, tablet, etc.) to search for and connect to "EDIFIER S3000 Pro".

Note:
* The Bluetooth function of S3000 Pro can only be searched and connected in Bluetooth input. The current Bluetooth connection will be disconnected once the speaker switches to other audio inputs. When switched back to Bluetooth input, the speaker will try to connect to the device connected last time.
* Pin code for connection is "0000" if needed.
* To disconnect Bluetooth, press and hold the "X" button on the remote control for 2 seconds.
* To enjoy all Bluetooth functions of this product, please ensure your audio source device has A2DP and AVRCP profiles.
* Bluetooth connectivity and compatibility may be different between different source devices, depending on the software versions of source devices.
* The built-in Qualcomm® aptX™ decoder in the product helps to achieve better wireless transmission sound quality, therefore please use the device supporting Qualcomm® aptX™ as the audio source.

English

Specification

Power output: RL (treble): 5W+5W
RL (mid-range and bass): 120W+120W
Frequency response: 38Hz-40KHz
Input: Line in / USB / Optical / Coaxial / Bluetooth / Balanced input

Frequency Band: 2.480GHz - 2.480GHz; 5.736-5.814GHz

RF Power output (ERP): 1.88dBm for 2.4GHz band; 11.52dBm for 5.8GHz band

There is no restriction of use.

English

Troubleshooting

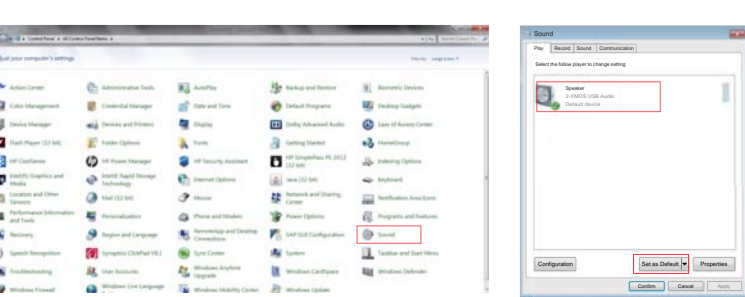
Problem	Solution
No sound	<ul style="list-style-type: none">• Check if the power indicator light is ON.• Try to turn up the volume using either the master volume control or remote control.• Ensure the audio cables are firmly connected and the input is set correctly on the speakers.
Cannot connect via Bluetooth	<ul style="list-style-type: none">• Check if there is a signal output from the audio source.• Make sure the speaker is switched to Bluetooth input. If it is in other audio input modes, Bluetooth will not connect. Disconnect from any Bluetooth device by pressing and holding "X" in Bluetooth mode, then try again.• Effective Bluetooth transmission range is 10 meters; please ensure that operation is within the range.• Try another Bluetooth device for connection.
The S3000 Pro does not turn on	<ul style="list-style-type: none">• Check if main power is connected, or if the wall outlet is switched on.

To learn more about EDIFIER, please visit www.edifier.com
For Edifier warranty queries, please visit the relevant country page on www.edifier.com and review the section titled Warranty Terms.
USA and Canada: service@edifier.ca
South America: Please visit www.edifier.com (English) or www.edifier.com (Spanish/Portuguese) for local contact information.

English

Troubleshooting

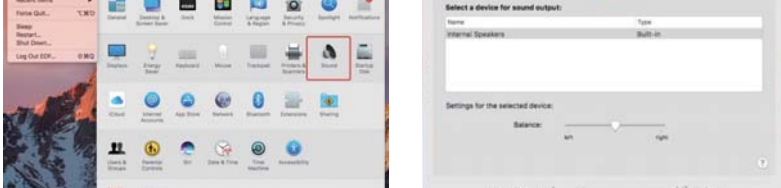
If speaker is connected to PC by a USB audio cable:
a. If the PC is using Windows operating system, please confirm that the special USB driver for S3000 Pro has been installed. If not, please download and install the driver.
b. For Windows users, please open "Device Manager" to check if there is USB device listed as "EDIFIER S3000 Pro" or "XNOS USB Audio"; if not, you may need to install the special USB driver program of S3000 Pro or re-start PC.
For Mac users, please open "System Preferences" -> "Sound" Tab, to check if there is audio output device enumerated as "EDIFIER S3000 Pro".
c. Please confirm whether the speaker is set as the audio output device.
For Windows users, please open "Control Panel" -> "Sound" -> "Play" -> "Set as Default" Tab to set "XNOS USB Audio" as the current audio output device.



English

Troubleshooting

For Mac users, please open "System Preferences" -> "Sound" -> "Output" Tab to select "EDIFIER S3000 Pro" as the current audio output device.



English