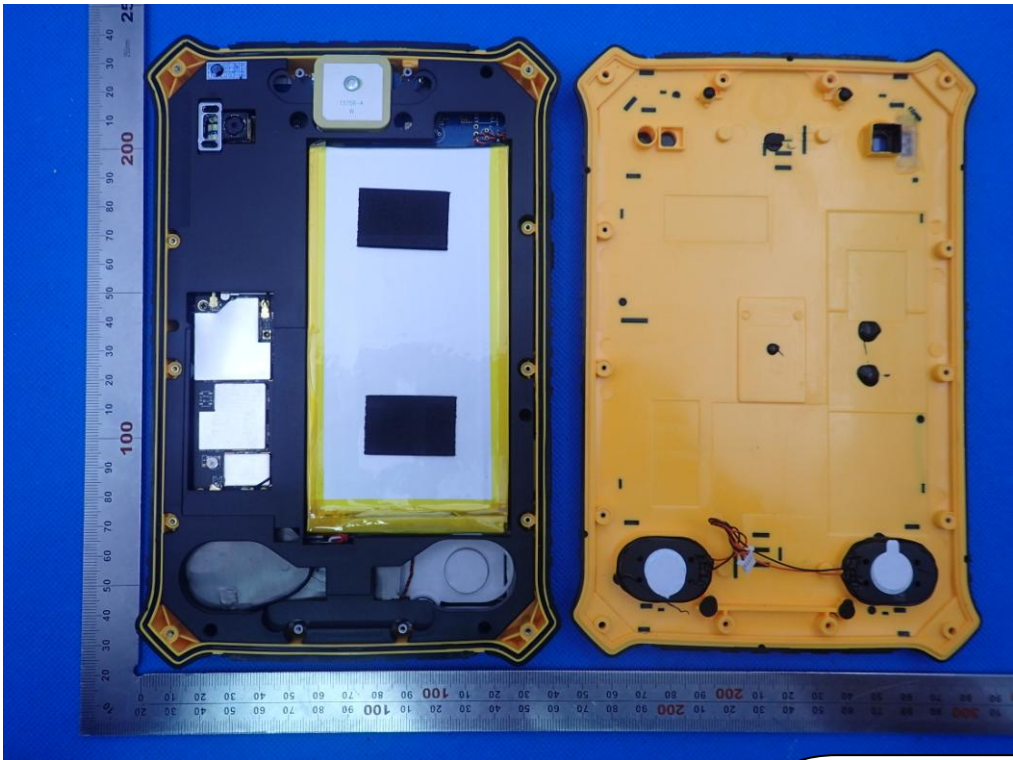
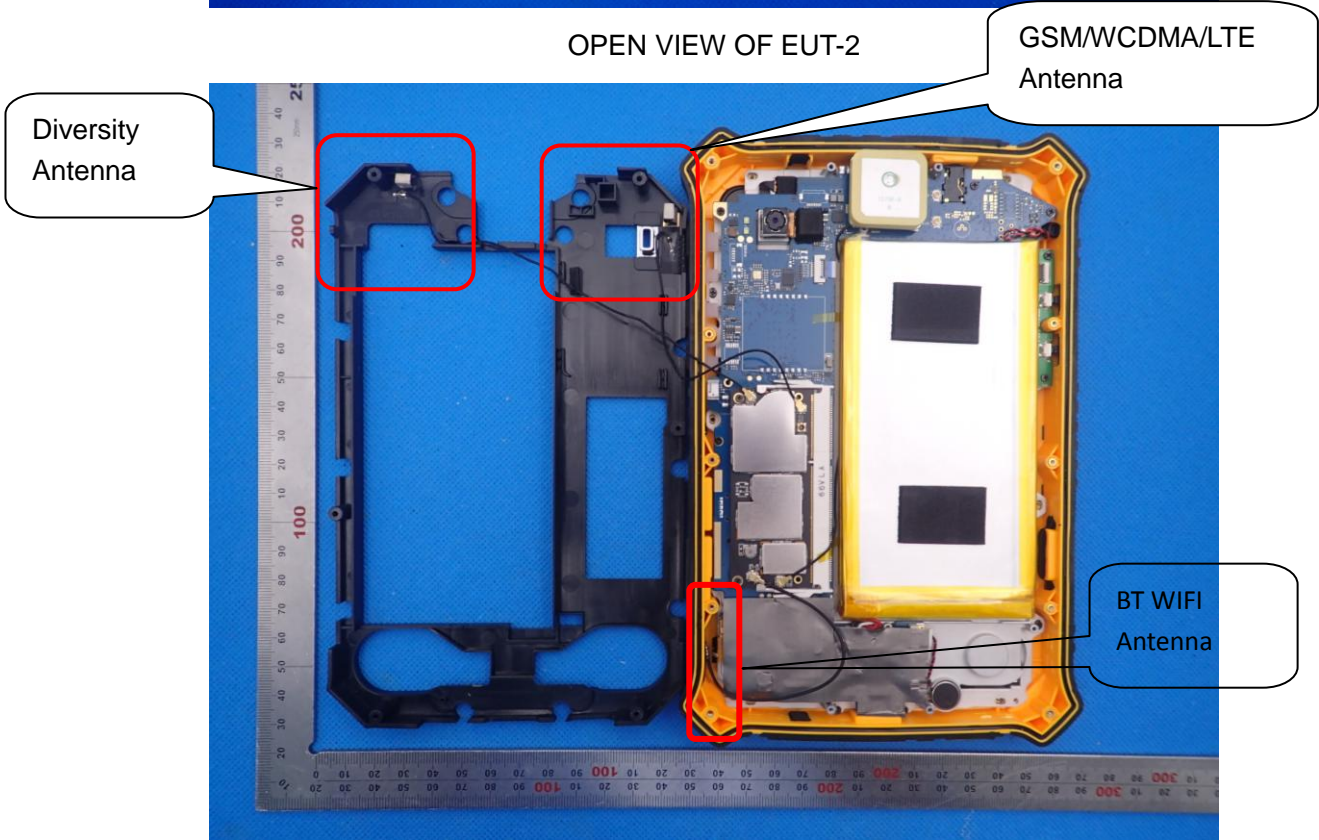


Internal Photos

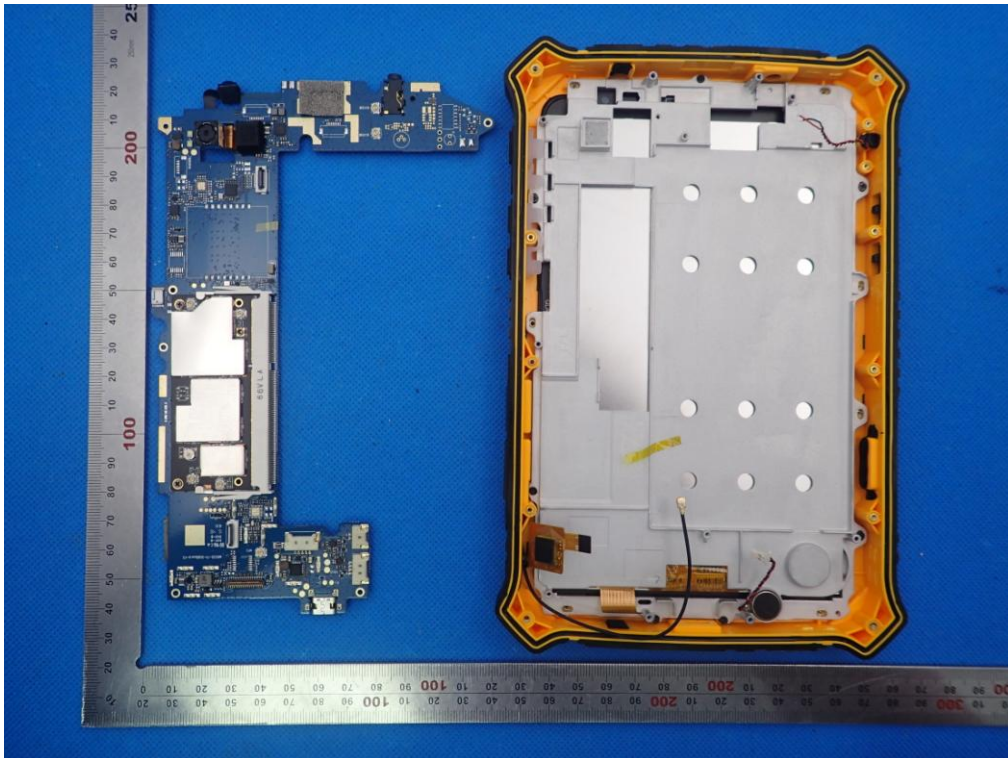
OPEN VIEW OF EUT-1



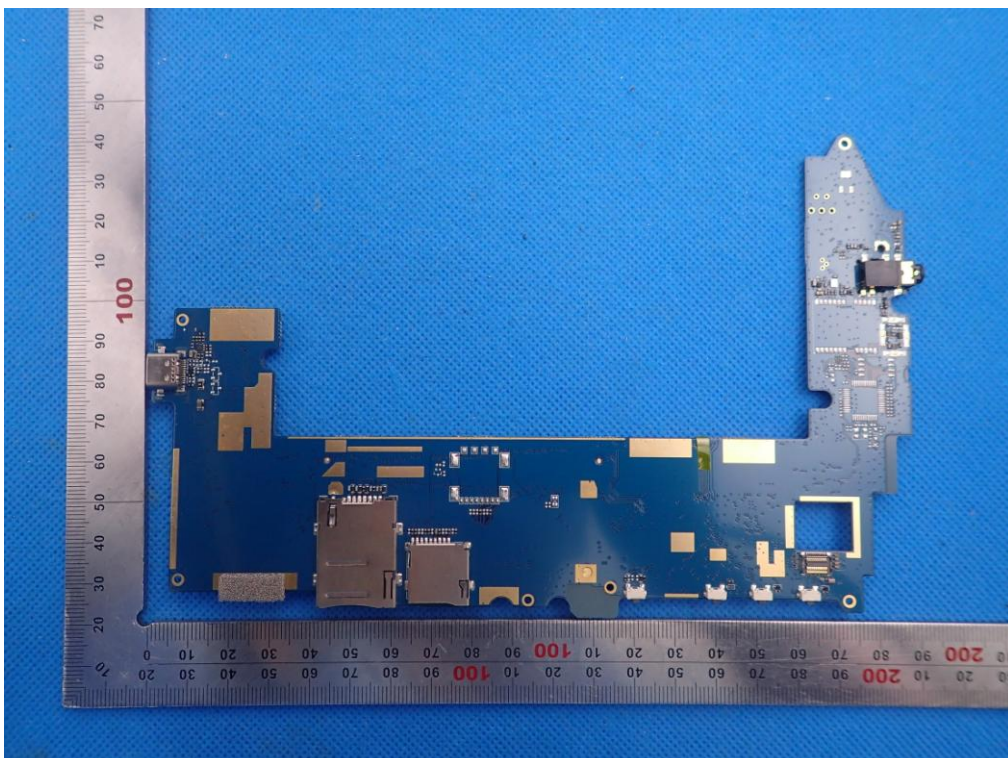
OPEN VIEW OF EUT-2



OPEN VIEW OF EUT-3



INTERNAL VIEW OF EUT-1



A photograph of a disassembled laptop showing the main system board, a separate SSD, and a separate I/O board. A ruler is placed below the components for scale. The main system board is blue and features a large square heat spreader, various integrated circuits, and connectors. The SSD is a small, rectangular, silver-colored component. The I/O board is a smaller blue board with various ports and connectors. The ruler shows measurements in centimeters and inches.

The image shows a MediaTek MT6735V ARM processor module. The module is black with gold-plated edge connectors. The text on the module includes "P2016H6N", "MT6735V", "1634-WAHNNH", "CT1KB076", and "ARM". The module is placed on a blue surface with a ruler for scale. The ruler shows the module is approximately 100mm long and 20mm wide.

INTERNAL VIEW OF EUT-4

