

## EXHIBIT 1 - PRODUCT LABELING

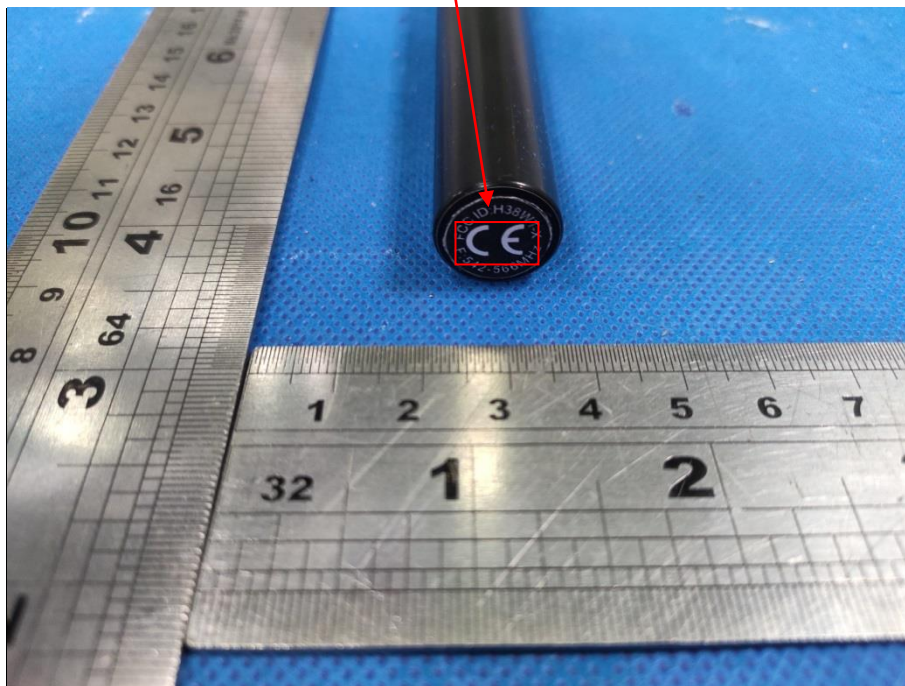
### Proposed FCC ID Label Format

**FCC ID: H38WT-X**

Specifications: Text is black in color and justified. Labels are printed in indelible ink on permanent adhesive silk-screened onto the EUT or shall be affixed at a conspicuous location on the EUT.

### Proposed Label Location on EUT

FCC ID Label Location



## EXHIBIT 2 - EUT EXTERNAL PHOTOGRAPHS

---

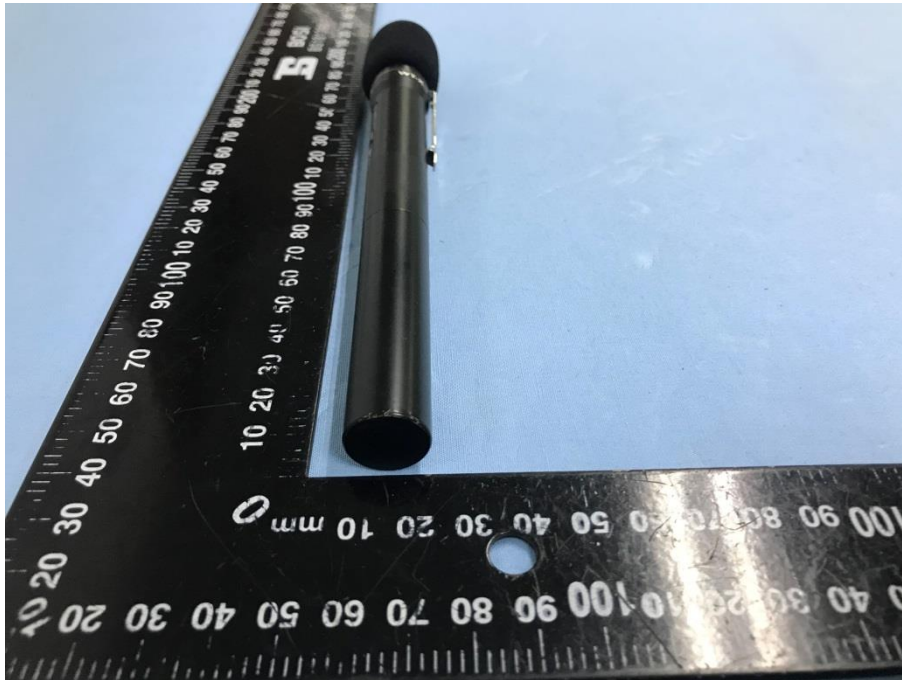
EUT View 1



EUT View 2



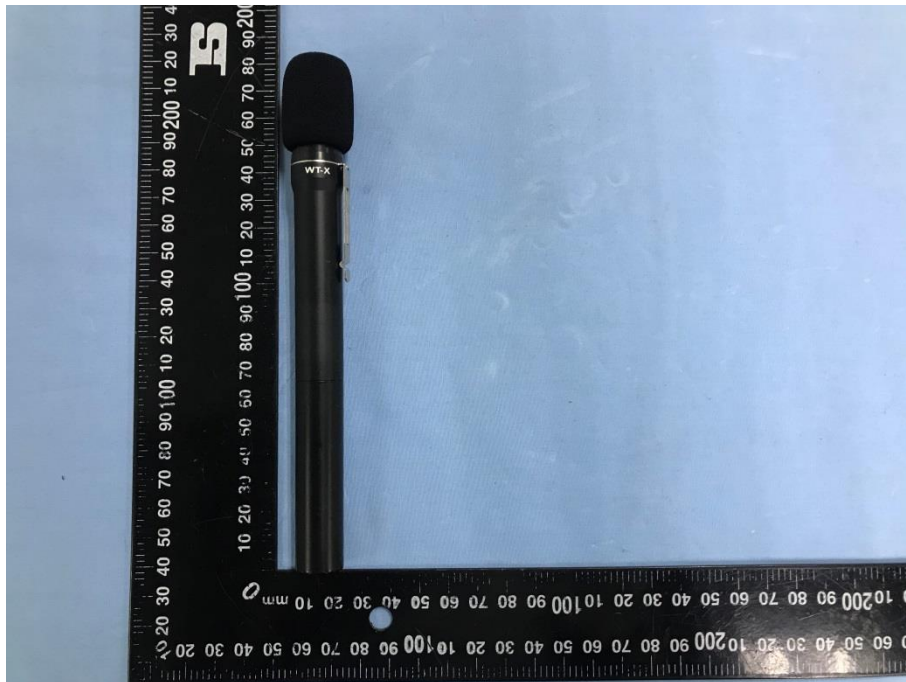
**EUT View 3**



**EUT View 4**



**EUT View 5**



**EUT View 6**





## EXHIBIT 3 - EUT INTERNAL PHOTOGRAPHS

---

### EUT Housing and Board View 1



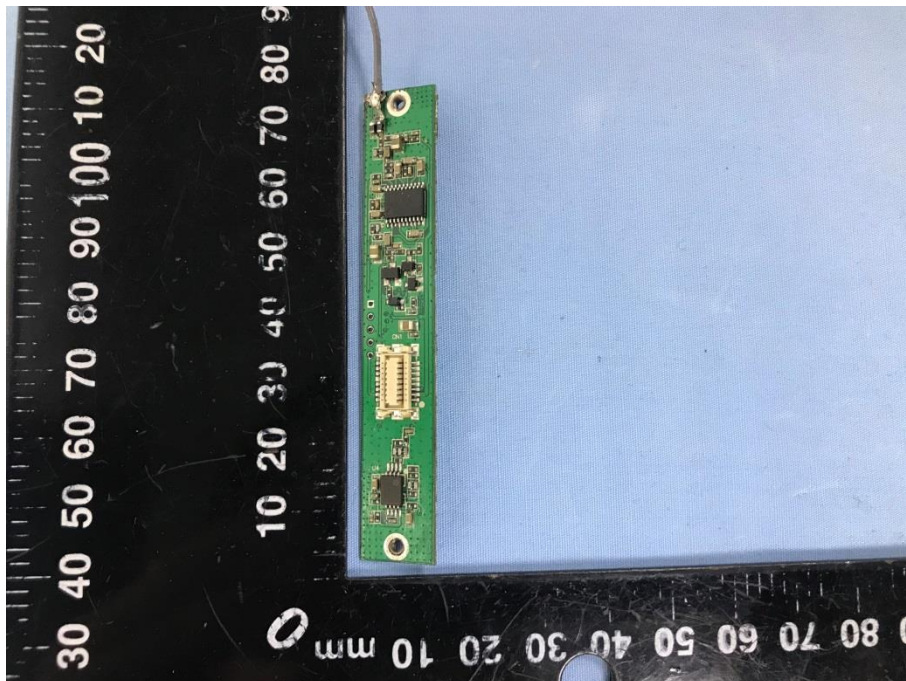
### EUT Housing and Board View 2



### Solder Board-Component View 1

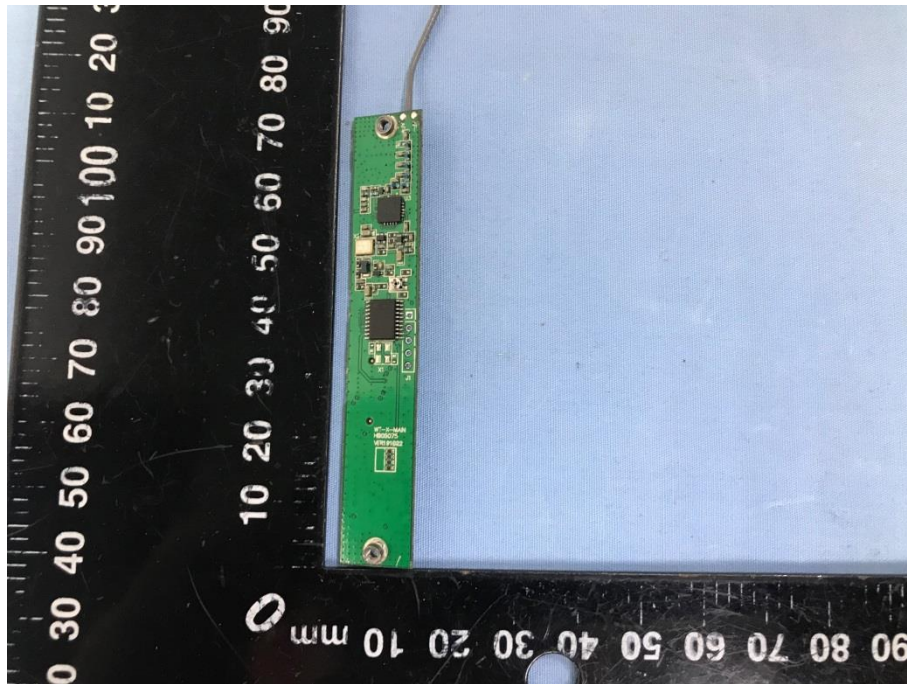


### Solder Board-Component View 2

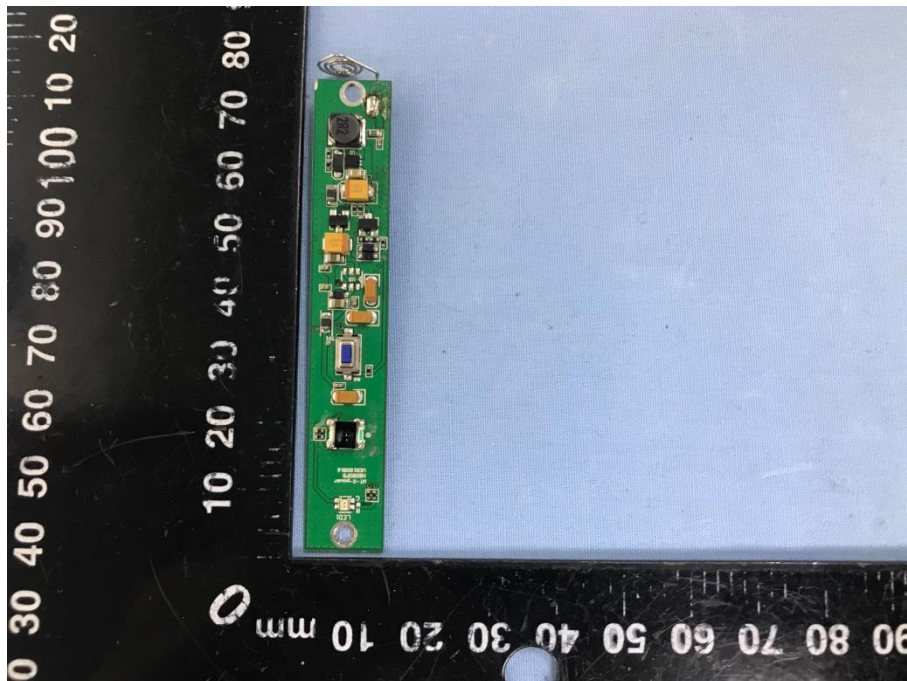




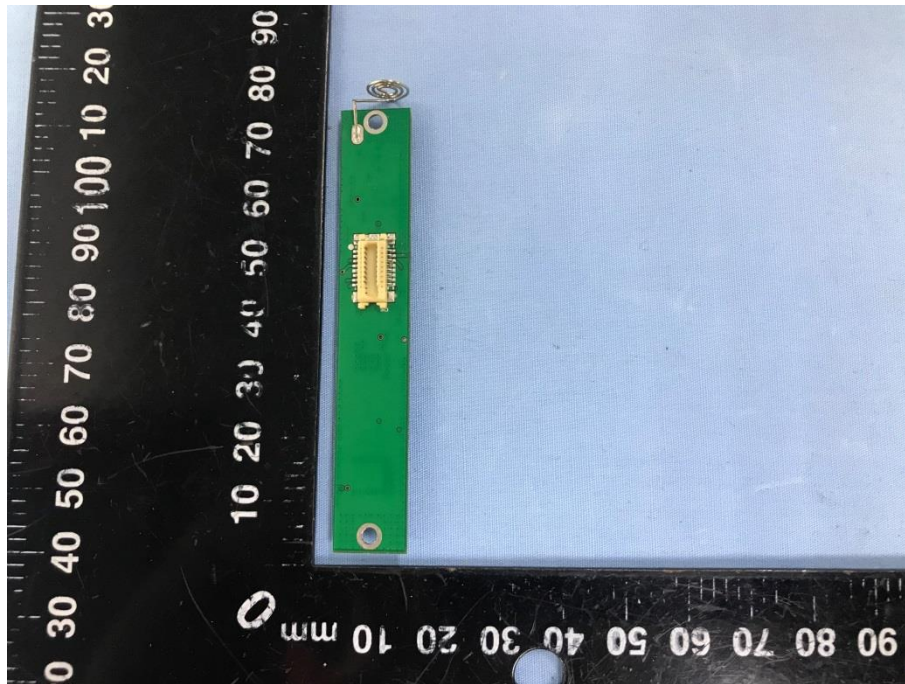
**Solder Board-Component View 3**



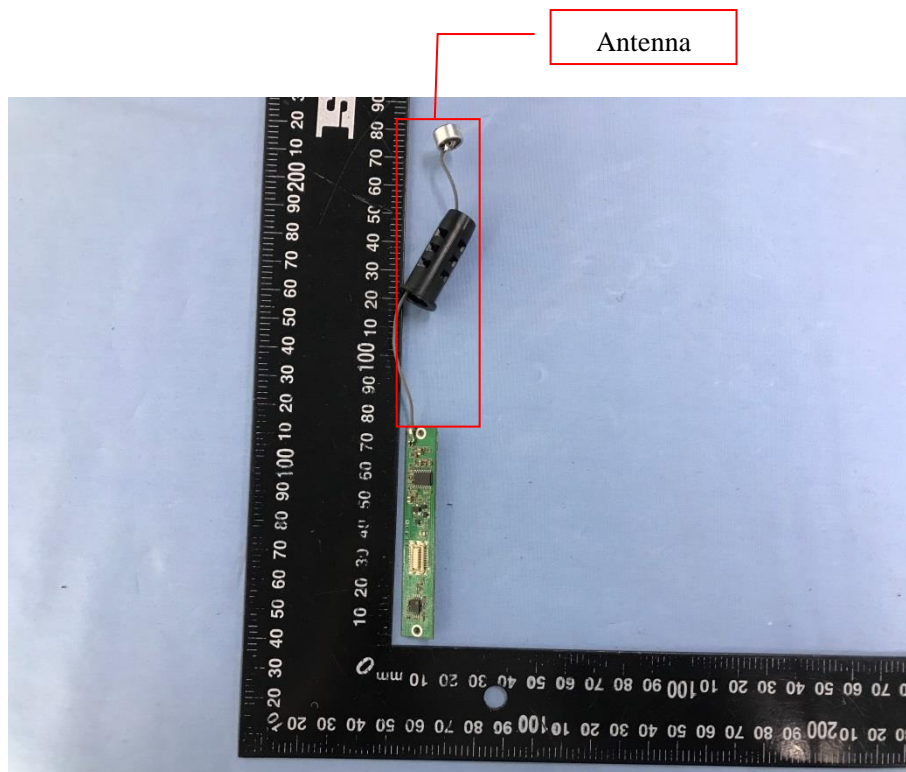
**Solder Board-Component View 4**



### Solder Board-Component View 5



### Antenna View





## EXHIBIT 4 - TEST SETUP PHOTOGRAPHS

---

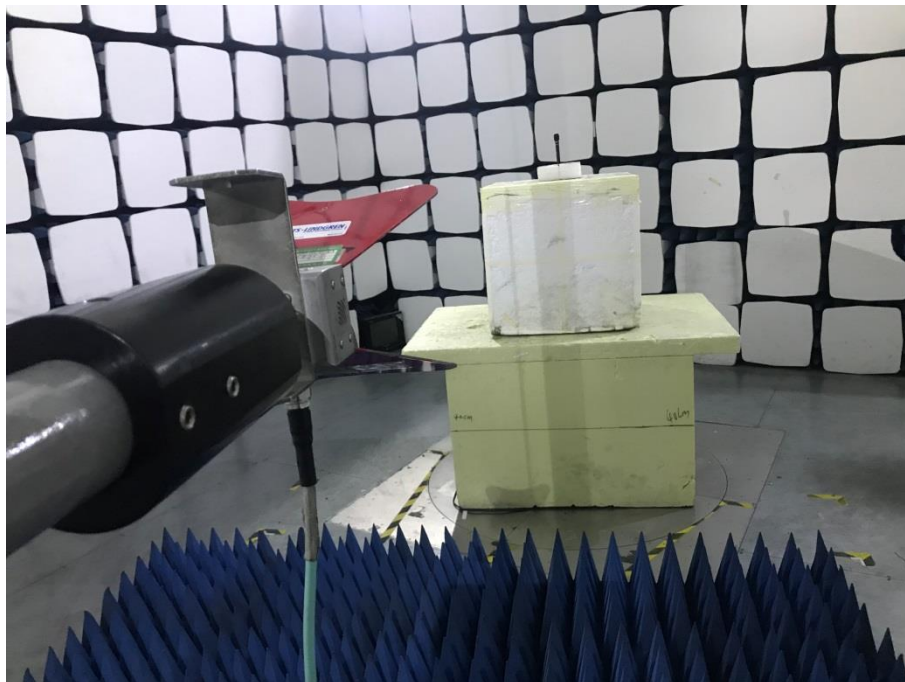
### Radiation Emission Test Setup (Below 30MHz)



### Radiation Emission Test Setup (30MHz to 1GHz)



### Radiation Emission Test Setup (Above 1GHz)



---

## EXHIBIT 5 - USERS MANUAL

---

### Information to Users

According to the FCC Part 15.19, 15.21, and 15.105 rules, for this EUT, the instructions or operation manual furnished the user shall include the following or similar statement, placed in a prominent location in the text of the manual:

### FCC Warning

This device complies with Part 15 of the FCC Rules. Operation is subject to the following two conditions:

(1) This device may not cause harmful interference, and (2) This device must accept any interference received, including interference that may cause undesired operation.

NOTE 1: This equipment has been tested and found to comply with the limits for a Class B digital device, pursuant to part 15 of the FCC Rules. These limits are designed to provide reasonable protection against harmful interference in a residential installation. This equipment generates, uses and can radiate radio frequency energy and, if not installed and used in accordance with the instructions, may cause harmful interference to radio communications. However, there is no guarantee that interference will not occur in a particular installation. If this equipment does cause harmful interference to radio or television reception, which can be determined by turning the equipment off and on, the user is encouraged to try to correct the interference by one or more of the following measures:

- Reorient or relocate the receiving antenna.
- Increase the separation between the equipment and receiver.
- Connect the equipment into an outlet on a circuit different from that to which the receiver is connected.
- Consult the dealer or an experienced radio/TV technician for help.

NOTE 2: Any changes or modifications to this unit not expressly approved by the party responsible for compliance could void the user's authority to operate the equipment.