

**Bluetooth v2.0+EDR**

**USB Adapter**

**User's Guide**

## **Federal Communication Commission Interference Statement**

This equipment has been tested and found to comply with the limits for a Class B digital device, pursuant to Part 15 of the FCC Rules. These limits are designed to provide reasonable protection against harmful interference in a residential installation.

This equipment generates, uses and can radiate radio frequency energy and, if not installed and used in accordance with the instructions, may cause harmful interference to radio communications. However, there is no guarantee that interference will not occur in a particular installation. If this equipment does cause harmful interference to radio or television reception, which can be determined by turning the equipment off and on, the user is encouraged to try to correct the interference by one of the following measures:

- ◆ Reorient or relocate the receiving antenna.
- ◆ Increase the separation between the equipment and receiver.
- ◆ Connect the equipment into an outlet on a circuit different from that to which the receiver is connected.
- ◆ Consult the dealer or an experienced radio/TV technician for help.

***FCC Caution:*** To assure continued compliance, any changes or modifications not expressly approved by the party responsible for compliance could void the user's authority to operate this equipment. (Example - use only shielded interface cables when connecting to computer or peripheral devices).

This device complies with Part 15 of the FCC Rules. Operation is subject to the following two conditions:

- (1) This device may not cause harmful interference, and
- (2) This device must accept any interference received, including interference that may cause undesired operation.

## **CE Mark Warning**

This is a Class B product. In a domestic environment, this product may cause radio interference, in which case the user may be required to take adequate measures.



# TABLE OF CONTENTS

---

<b>INTRODUCTION .....</b>	<b>1</b>
BLUETOOTH TECHNOLOGY .....	1
ABOUT THE BLUETOOTH V2.0+EDR USB ADAPTER .....	1
PRODUCT FEATURES .....	2
UNPACKING .....	3
<b>INSTALLATION THE BLUETOOTH SOFTWARE .....</b>	<b>4</b>
INSTALLATION THE BLUETOOTH SOFTWARE .....	5
USING THE BLUETOOTH SOFTWARE.....	9
<b>INTRODUCTION THE BLUETOOTH SOFTWARE .....</b>	<b>13</b>
BLUETOOTH TRAY .....	13
ICONS USED FOR BLUETOOTH DEVICES AND SERVICES .....	14
CREATE A CONNECTION .....	14
FIND BLUETOOTH DEVICES .....	15
PERIODIC SEARCH FOR DEVICES.....	15
FIND A SERVICE.....	16
BLUETOOTH CONNECTION STATUS .....	18
SEND TO BLUETOOTH .....	19
ACCESS THE BLUETOOTH CONFIGURATION PANEL .....	20
BLUETOOTH SERVICES VERSUS BLUETOOTH APPLICATIONS .....	20
BLUETOOTH EXCHANGE FOLDER .....	21
<b>BLUETOOTH APPLICATION .....</b>	<b>22</b>
BLUETOOTH APPLICATIONS OVERVIEW .....	22
HUMAN INTERFACE DEVICE (HID).....	23
AUDIO GATEWAY .....	25
BLUETOOTH SERIAL PORT .....	26
DIAL-UP NETWORKING.....	27
FAX .....	28
HEADSET .....	29
FILE TRANSFER.....	30
NETWORK ACCESS .....	32

PIM SYNCHRONIZATION .....	33
PIM ITEM TRANSFER .....	35
PRINTER .....	37
<b>BLUETOOTH SERVICE .....</b>	<b>39</b>
NOTIFICATIONS SERVICE .....	39
AUDIO GATEWAY SERVICE .....	41
BLUETOOTH SERIAL PORT SERVICE .....	42
DIAL-UP NETWORKING SERVICE .....	43
FAX SERVICE .....	44
FILE TRANSFER SERVICE .....	44
HEADSET SERVICE .....	46
NETWORK ACCESS SERVICE .....	47
PIM ITEM TRANSFER .....	49
PIM SYNCHRONIZATION .....	52
<b>BLUETOOTH SETTINGS .....</b>	<b>53</b>
HARDWARE SETTINGS .....	53
ADVANCED SETTINGS .....	54
ACCESSIBILITY SETTINGS .....	55
DISCOVERY SETTINGS .....	56
<b>SECURITY .....</b>	<b>59</b>
AUTHENTICATION .....	59
AUTHORIZATION .....	59
BLUETOOTH DEVICE IDENTITY .....	59
ENCRYPTION .....	60
LINK KEY .....	60
PAIRING DEVICES .....	60
PASSKEY .....	61
SECURE CONNECTION .....	61
SECURITY REQUEST DIALOG BOX .....	61
<b>SPECIFICATIONS .....</b>	<b>62</b>

# **INTRODUCTION**

---

Thank you for purchasing of the Bluetooth V2.0+EDR USB Adapter. This Adapter will allow you connect to other Bluetooth devices.

## **Bluetooth Technology**

---

Bluetooth is a short range wireless communication technology. It allows wireless connections between Bluetooth devices such as cellular phones, personal digital assistants (PDA), desktop and notebooks computers, mouse, keyboards, printers, and home appliances. Bluetooth refers to a worldwide standard designed to operate in the internationally recognized ISM frequency band (2.4 GHz – 2.48 GHz). Within the ISM band, Bluetooth transmissions hop between 79 separate frequencies 1,600 times every second, and with a communication range of about 10 meters for class II or 100 meters for class I.

## **About the Bluetooth V2.0+EDR USB Adapter**

---

The Bluetooth V2.0+EDR USB Adapter is the perfect wireless solution for quick and easy access to Bluetooth enabled devices. It is a class 2/3 low power device and is bundled with Bluetooth Software which allows you to connect to several Bluetooth devices at once. The wireless transmission range of the Bluetooth V2.0+EDR USB Adapter is up to 10 meters. A PC configured as the Bluetooth server can support up to 7 Bluetooth client devices with IP addresses being automatically assigned upon a successful connection. The Bluetooth Software also provides Internet sharing and security access between the server and clients.

---

## Product Features

---

- ◆ Bluetooth v2.0 + EDR Specification compliant
- ◆ USB 2.0 full-speed compliant
- ◆ Supports Bluetooth Enhanced Data Rate (EDR) compliant with v2.0.E.2 of specification for both 2Mbps and 3Mbps modulation modes
- ◆ Full Speed Bluetooth Operation with Full Piconet Support
- ◆ Scatternet Supported
- ◆ Support Bluetooth Class 2
- ◆ Supports all Bluetooth 2.0 features:
  - Adaptive Frequency Hopping (AFH), including classifier
  - Faster Connection – enhanced inquiry scan (immediate FHS response)
  - LMP improvements
  - Parameter Ranges
  - Extended SCO (eSCO)
  - SCO handle
  - Synchronization
- ◆ Support up to 7 active slave devices
- ◆ Supported Operating Systems for Windows 98SE, Windows Me, Windows 2000 and Windows XP
- ◆ Supported Broadcom BTW Bluetooth Stack Software with GAP, GOEP, SPP, FTP, OPP, DUN, SYNC, FAX, PAN, HID, HSP, HRCPP, BIP, BPP, GAVDP, A2DP and AVRCP
- ◆ System requirements:
  - Operation System:
  - Windows 98SE/Windows ME/Windows 2000 or Windows XP
  - One Available USB 2.0 Port
  - CD-ROM Driver

---

## Unpacking

---

Open the shipping package of the Bluetooth V2.0+EDR USB Adapter and carefully unpack its contents. The package should contain the following items:

- ◆ One Bluetooth V2.0+EDR USB Adapter
- ◆ One Installation CD with Driver, User's Manual and Bluetooth Software

If any item is found missing or damaged, please contact your local reseller for replacement.

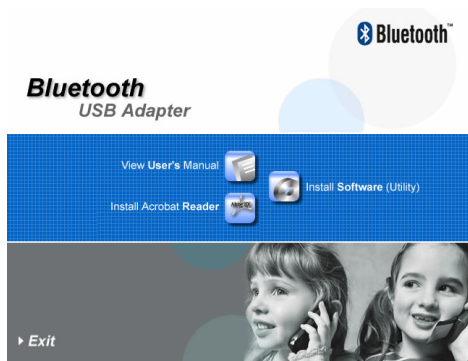


## INSTALLATION THE BLUETOOTH SOFTWARE

---

**Install the driver and software located on the CD that came with your purchase BEFORE installation the Bluetooth USB Adapter into your computer.**

Insert the Bluetooth Driver/Software CD into your CD-ROM drive and the Auto-run program will appear. Alternatively this can also be done manually by double clicking the autorun.exe file on the CD.

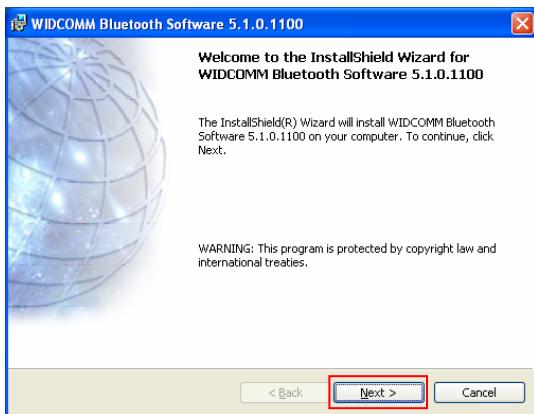


Click the “Install Software” on the menu to install the Bluetooth USB Adapter driver and software, the install wizard will begin the software installation. Follow the install wizard instructions completed the software install.

---

# Installation the Bluetooth Software

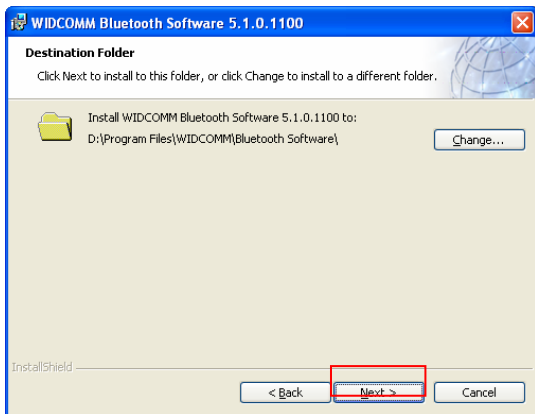
---



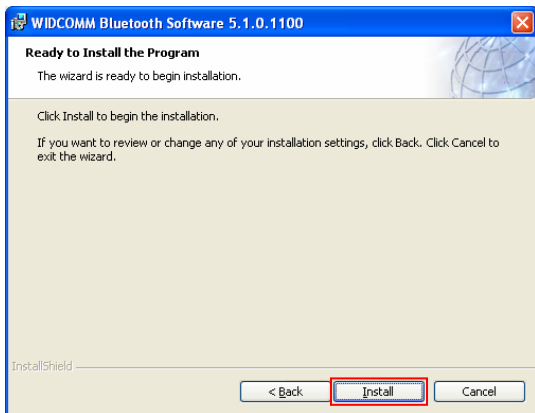
Click *Next* to continue the software installation.



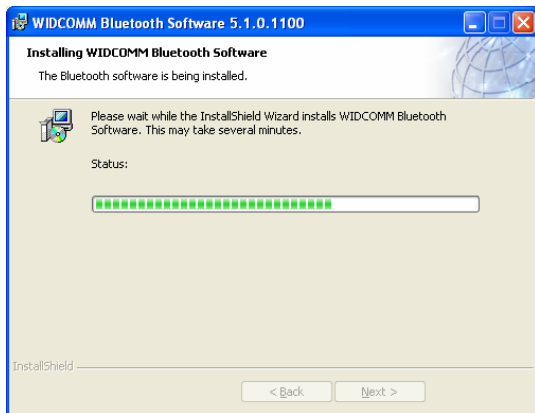
Read the *END USER LICENSE AGREEMENT* than selected “I accept the terms in the license agreement” and click **Next** to continue the software installation.



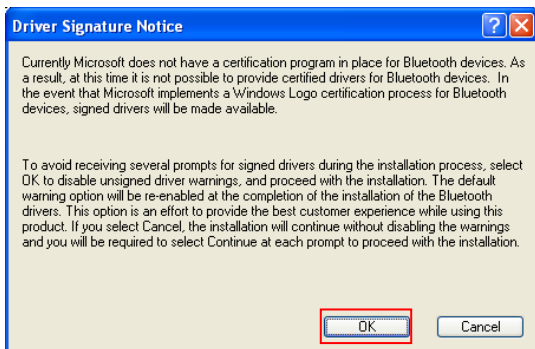
Click **Next** to continue the software installation.



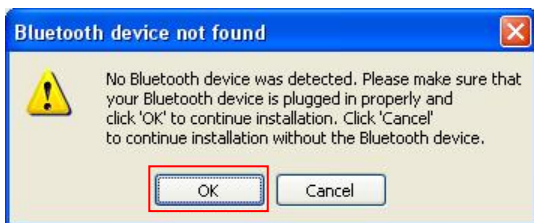
Click **Install** to start the software installation.



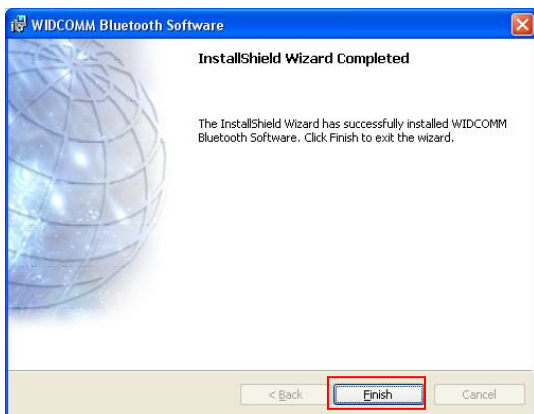
Start the software installation.



Click **OK** to continue the software installation.



Now plug the *Bluetooth V2.0+EDR USB Adapter* to an available USB port, than ckick **OK** to continue the software installation.



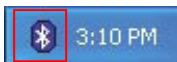
Click **Finsh** to finsh the software installation.

---

## Using the Bluetooth Software

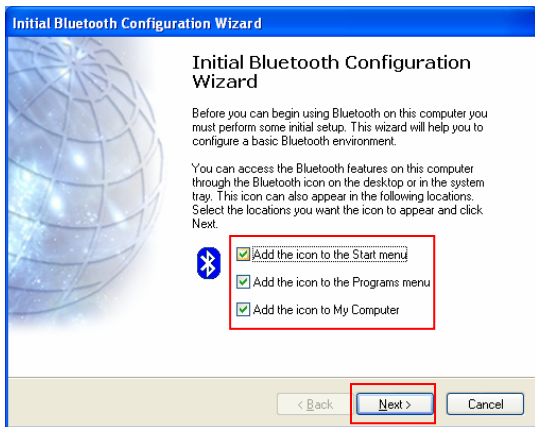
---

After you have completed the driver and software installation and reboot your computer, a Bluetooth icon will appear on your desktop and in the bottom right hand corner of your desktop screen (systray). The Bluetooth icon gives you access to **My Bluetooth Places**, for configuring your Bluetooth settings.

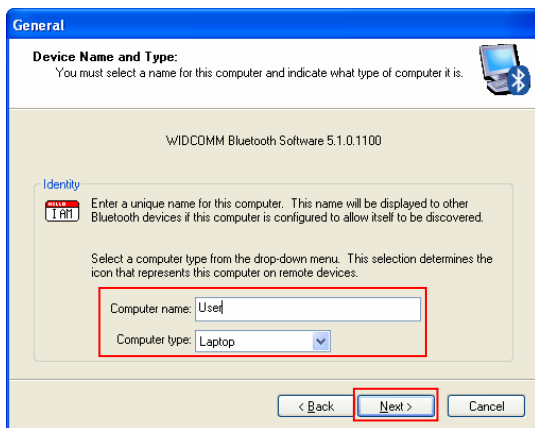


Double the Bluetooth icon for access to ***My Bluetooth Place***.

The **Bluetooth Configuration Wizard** launches the first time that you double click on **My Network Place**.



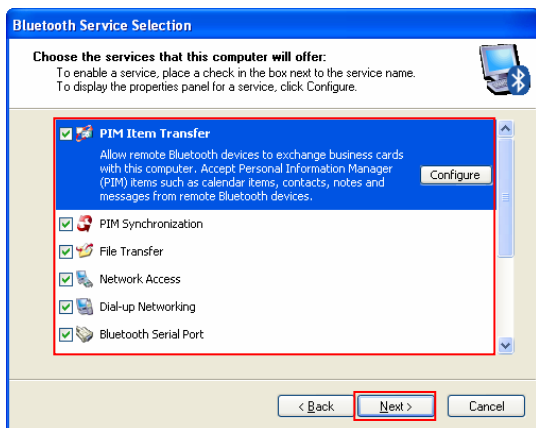
Click ***Next*** to continue the configuration.



Type a unique name for your Computer. Select Desktop or Laptop than Click **Next**.



Click **Next** to continue the configuration.



Select the Services that your Bluetooth USB Adapter will provide to other Bluetooth products than click **Next** to continue the configuration.





You can configure your other Bluetooth devices at this step. Otherwise, click **Skip** to finish the configuration for your Bluetooth USB Adapter. Click **Next** to continue the configuration.



Click **Finish** to finish the configuration.

The Bluetooth USB Adapter is now able to connect to other Bluetooth devices and your setup is complete!

# INTRODUCTION THE BLUETOOTH SOFTWARE

---

## Bluetooth Tray

---

The Bluetooth tray resides in the Windows system tray, which is normally located in the lower-right corner of the screen. The Bluetooth tray provides fast access to most Bluetooth operations.

### Access My Bluetooth Places

Double-click the Bluetooth icon or right-click the Bluetooth icon and then select Explore My Bluetooth Places.

### Access the Bluetooth Setup Wizard

- ◆ Configure how this computer accesses a service on another Bluetooth device
- ◆ Locate remote Bluetooth devices
- ◆ Configure the way that this computer provides services to remote Bluetooth devices
- ◆ Set the name and type of this Bluetooth device, e.g., “Eddy’s PC” and “Desktop.”

### Access the Bluetooth Configuration Panel

Right-click the Bluetooth icon and then select Advanced Configuration.

### Access the Quick Connect option

Right-click the Bluetooth icon, selects Quick Connect, and then selects the type of service to which you wish to connect.

### Start/Stop Bluetooth on this computer


**To start Bluetooth:** in the Windows system tray, right-click the Bluetooth icon and select Start the Bluetooth Device. The Bluetooth icon is blue in color with a white insert when Bluetooth is running.

**To stop Bluetooth:** in the Windows system tray, right-click the Bluetooth icon and select Stop the Bluetooth Device. The Bluetooth icon is blue in color with a red insert when Bluetooth is stopped.

---

## Icons Used for Bluetooth Devices and Services

---

The Bluetooth icon  in the Windows system tray provides feedback about Bluetooth status.



The Bluetooth USB Adapter enabled.



The Bluetooth USB Adapter disabled or not plugged.



The Bluetooth was connected with other Bluetooth devices.

---

## Create a Connection

---

### From the Bluetooth Icon in the System Tray

In the Windows system tray, right-click the Bluetooth icon, select Quick Connect and then the Bluetooth service that you wish to use.

If this computer has created a connection to the desired type of service in the past, the options on the shortcut menu are:

- ◆ The name(s) of any device(s) with which prior connections to this type of service have been established. Select a name from the list to re-establish connection.
- ◆ Other Devices...Select this option to search for additional devices that potentially provide the desired service, select a device from the list, and then click Connect.

If this computer has never created a connection to this type of service, the only option on the shortcut menu is “Find Devices....” Select this option to search for devices that potentially provide the desired service, select a device from the list, and then click Connect.

## Using the Bluetooth Setup Wizard

- ◆ From the Folders pane of Windows Explorer, right-click My Bluetooth Places and select Bluetooth Setup Wizard or
- ◆ In Windows Explorer, with My Bluetooth Places selected, from the Bluetooth menu, select Bluetooth Setup Wizard or
- ◆ From the Windows system tray: right-click the Bluetooth icon and select Bluetooth Setup Wizard.

Follow the wizard's on-screen instructions.

## From Entire Bluetooth Neighborhood

From Windows Explorer:

- ◆ In the Folders pane, select Entire Bluetooth Neighborhood, right-click a device name and select "Connect ..." the desired service or
- ◆ In the Folders pane, expand Entire Bluetooth Neighborhood, select a device, and then, in the right pane, right-click a service provided by that device and select "Connect to..."

---

## Find Bluetooth Devices

---

Search for Devices looks for Bluetooth devices in the vicinity and displays the devices that it finds in My Bluetooth Places.

To start a search for devices, in the Folders pane of My Bluetooth Places, select Entire Bluetooth Neighborhood, and then, from the Bluetooth menu, select Search for Devices.

---

## Periodic Search for Devices

---

Bluetooth can be configured to automatically search for devices on a regular basis (Bluetooth Configuration Panel → Discovery tab).

One of the advantages of Bluetooth is the mobility that the wireless connections allow. However, mobility means that devices may move in or out of connection range during the time between the automatic updates

performed by Bluetooth. To be certain that the displayed list of devices in the neighborhood is current, or if automatic periodic inquiry is not enabled, force an update of the device list using the technique described in Search for Devices, above.

Some devices within connection range may not show up in the list of devices found because:

- ◆ Your device is configured to report only specific types or classes of devices (Bluetooth Configuration Panel → Discovery tab, on your device).
- ◆ The unlisted device is configured to be non-discoverable (Bluetooth Configuration Panel → Accessibility tab, on the un-listed device).

---

## Find A Service

---

The process of determining the services that a device provides is called Service Discovery.

To initiate a Service Discovery, in the Folders pane of My Bluetooth Places, right-click a device name and select Discover Available Services from the shortcut menu.

Bluetooth services are those things that this computer can do for remote Bluetooth devices. For example, if this computer allows a remote Bluetooth device to send a fax using a fax modem that is physically attached to this computer, then this computer is providing the Bluetooth fax service.

Some services are hardware dependant; this computer cannot provide the fax service unless it has a physical fax modem, for example.

Some Bluetooth services use virtual “hardware.” The Bluetooth Serial Port service, for example, does not use a physical port on this computer. Instead, it creates virtual serial ports that Windows applications can see and use as if they were actual physical ports.

Each Bluetooth service that this computer is capable of providing can be started automatically when Bluetooth starts. Each service can be setup to

require security measures before allowing a remote Bluetooth device to connect.

Bluetooth services require a Bluetooth application on the remote device; services and applications usually have coinciding names; i.e., there is a Bluetooth Fax Service and a Bluetooth Fax Application.

The services supported by Bluetooth are:

- ◆ Bluetooth Serial Port -- a wireless connection between two devices. This connection can be used by applications as though a physical serial cable connected the devices.
- ◆ Dial-up Networking -- allows a device to use a modem that is physically attached to another Bluetooth device.
- ◆ Fax -- allows a device to send a fax using a remote Bluetooth cell phone, modem, or computer.
- ◆ File Transfer -- allows a device to perform file system operations on another Bluetooth device; browse, open, copy, etc.
- ◆ Headset -- allows a Bluetooth headset to be used as the audio input/output mechanism for another Bluetooth device, such as a computer or cell phone.
- ◆ PIM Item Transfer -- allows two Bluetooth devices to exchange Personal Information Manager data such as business cards, calendar items, email messages, and notes.
- ◆ PIM Synchronization -- allows two Bluetooth devices to synchronize Personal Information Manager data.
- ◆ Network Access -- allows a device to access a Local Area Network via a second Bluetooth device that is physically connected to the network or allows a remote device to become part of an ad hoc network provided by the Bluetooth server.
- ◆ Audio Gateway -- allows the microphone/speakers on Bluetooth device (typically a computer) to be used as the audio input/output mechanism for a remote Bluetooth device, such as a cell phone.

All Bluetooth servers do not necessarily provide all of these services. For example, network gateways may provide only the Network Access service.

---

## Bluetooth Connection Status

---

The Bluetooth Connection Status dialog box displays information about the state of a connection and provides a means to disconnect an active connection.

**Display the Connection Status dialog box:** in My Bluetooth Places, from the Folders pane, select a device, and then, in the right pane of My Bluetooth Places, right-click a service name and select Status from the shortcut menu.

The Information provided is:

**Status:** “Connected” or “Not Connected”

**Device Name:** the name of the device to which this computer is connected.

**Duration:** the length of time that this connection has been established, displayed in hours, minutes and seconds. Depending on the service, the connection may time out (automatically disconnect) after a specific period of inactivity.

**Activity:** the number of bytes sent and received over the connection.

**Signal Strength:** a graphic indicator that ranges from Too Weak through Good to Too Strong.

---

## Send to Bluetooth

---

This feature is used to send information to another Bluetooth device. Data types include:

- ◆ Files from Windows Explorer
- ◆ Documents from Microsoft Office applications, including:
  - Word
  - Excel
  - Access
  - PowerPoint
- ◆ Microsoft Outlook items, including:
  - Contacts
  - Appointments
  - Tasks
  - Messages
  - Notes.

### To use Send to Bluetooth

- ◆ In the application:
  - Windows Explorer -- select one or more files to be transferred. Folders cannot be transferred.
  - Microsoft Office -- only the document in the active window can be transferred.
  - Microsoft Outlook -- select one or more items to be transferred.
- ◆ From the application's File menu, select Send To, and then select Bluetooth from the shortcut menu. Select a device from the shortcut menu to send the data or Select Other..., choose a device from the list, and then click OK to send the data.



---

## Access the Bluetooth Configuration Panel

---

The Bluetooth Configuration Panel provides access to settings for Bluetooth services, client applications, hardware, security, discovery, accessibility, default paths, event notification and other Bluetooth related items.

To Open the Bluetooth Configuration Panel:

- From the Windows Control Panel, select Bluetooth Configuration or
- In the Windows System Tray, right-click the Bluetooth icon, and select Advanced Configuration from the shortcut menu.

---

## Bluetooth Services versus Bluetooth Applications

---

Bluetooth Services are services that this computer provides to remote Bluetooth devices. The Bluetooth services on this computer are referred to collectively in the Bluetooth configuration panel as “Local Services.”

Bluetooth Applications are software applications on this computer that allow this computer to use the Bluetooth services that are provided by remote devices. The Bluetooth applications on this computer are referred to collectively in the Bluetooth configuration panel as “Client Applications.”

Bluetooth Services and Bluetooth Applications usually have coinciding names; e.g., there is a File Transfer service and a File Transfer client application.

How this computer provides a service to remote devices is configured on the Local Services tab of the Bluetooth configuration panel.

How this computer uses a service that is provided by a remote device is configured on the Client Applications tab of the Bluetooth configuration panel.

---

## Bluetooth Exchange Folder

---

This is the highest-level directory on this computer to which a remote Bluetooth device has access.

Devices that have been granted access to this computer's Bluetooth Exchange Folder also have access to all sub-folders contained within that folder and all files in those sub-folders.

***NOTE: The Bluetooth Exchange Folder is shared by the PIM Item Transfer and the File Transfer services and can be configured from the Properties page of either of those services. When the Bluetooth Exchange Folder is re-configured for either of these services, the other service will be updated to use the new location.***

# BLUETOOTH APPLICATION

---

## Bluetooth Applications Overview

---

### Identity

- ◆ Computer Name -- enter a unique name to identify this computer to other Bluetooth devices in the vicinity; this field cannot be left blank.
- ◆ Computer type -- select either Desktop or Laptop from the shortcut menu to set the type of icon remote devices will use to represent this computer.

### Overview

Some built-in Bluetooth applications provide full functionality for a specific task, such as locating other Bluetooth devices or synchronizing two Personal Information Managers.

Other built-in Bluetooth applications provide a way for standard Windows applications to accomplish their tasks wirelessly. For example, a Bluetooth application may create a wireless serial connection between computers or provide wireless access to the Internet.

The difference between Bluetooth Applications and Bluetooth Services:

- ◆ Bluetooth Applications are software programs on this computer that allow this computer to use the Bluetooth services that are provided by other devices. In the Bluetooth configuration panel, these programs are referred to collectively as “Client Applications.”
- ◆ Bluetooth Services are software programs on this computer that provide a service to other devices. In the Bluetooth configuration panel, these programs are referred to collectively as “Local Services.”

## General Configuration

All of the built-in Bluetooth applications allow you to rename the application and to require a secure connection when using the application.

To access the configuration properties page for a built-in Bluetooth application:

- ◆ In the Windows system tray, right-click the Bluetooth icon and select Advanced Configuration from the shortcut menu or
- ◆ From the Windows control panel select Bluetooth Configuration or
- ◆ From Windows Explorer, right-click Entire Bluetooth Neighborhood and select Properties from the shortcut menu.

In the Bluetooth configuration panel, Client Applications tab, highlight the application to be configured, and then click Properties (or double-click the application).

---

## Human Interface Device (HID)

---

### Overview

The Human Interface Device (HID) Application allows this computer to wirelessly use one or more remote Bluetooth HID's as input/output devices.

For example, the HID Application allows this computer to use a Bluetooth keyboard and a Bluetooth mouse. Important Note: The Bluetooth USB Adapter should work with most HID devices.

## **Create a Bluetooth HID connection**

Open a connection to a Bluetooth Human Interface Device using one of these techniques:

- ◆ From My Bluetooth Places
- ◆ Using the Bluetooth Setup Wizard

Once an HID connection is established, that connection will persist. If the computer is shut down, when the computer is turned on again the connection will re-establish automatically.

## **Close an HID connection**

Under normal circumstances, there is no reason to close an HID connection; once established the connection is maintained automatically, even during the power off and power on processes.

If, for some reason, the connection must be closed: from My Bluetooth Places, right-click the service name and select Disconnect.

When an HID connection is closed manually by the operator, the connection's "persistence" is broken. The connection must be re-established manually, after which the connection will again persist until broken manually.

## **Configure**

No configuration is necessary.

---

## Audio Gateway

---

### Overview

The Audio Gateway Application allows a remote Bluetooth device to use this computer's microphone and speakers as the remote device's audio input and output devices.

### Create a Bluetooth Audio Gateway connection

Open a connection to the Audio Gateway service that is provided by another Bluetooth device using one of these techniques:

- ◆ Windows system tray, Bluetooth icon
- ◆ From My Bluetooth Places
- ◆ Using the Bluetooth Setup Wizard

### Close an audio gateway connection

If the connection was established via the Bluetooth icon in the Windows system tray; click the Bluetooth icon, select Quick Connect, Audio Gateway and then select the device that is providing the service (active connections have a checkmark in front of them). or

No matter how the connection was created, in My Bluetooth Places, right-click the service name and select Disconnect.

### Configure

The Bluetooth Configuration Panel > Client Applications > Audio Gateway > General tab provides options to configure:

- ◆ The application name -- to change it, highlight the existing name and enter the new name.
- ◆ Enable or disable secure connection. To enable secure connection, place a checkmark in the box.

---

## Bluetooth Serial Port

---

The Bluetooth Serial Port application allows this computer to establish a wireless serial connection with a remote Bluetooth device.

The applications on both this computer and the remote device must be configured to send and receive data to and from the respective communications port (COM port) assigned to the Bluetooth serial port. The wireless serial connection may then be used by the applications as though a physical serial cable connected the devices.

### Create a Bluetooth Serial Port connection

Establish a connection using one of these techniques

- ◆ Windows system tray, Bluetooth icon
- ◆ From My Bluetooth Places
- ◆ Using the Bluetooth Setup Wizard

### Close a Bluetooth Serial Port connection

- ◆ If the connection was established via the Bluetooth icon in the Windows system tray; click the Bluetooth icon, select Quick Connect, Bluetooth Serial Port and then select the device that is providing the service (active connections have a checkmark in front of them). or
- ◆ No matter how the connection was created, In My Bluetooth Places, right-click the service name and select Disconnect.

### Configure

The Bluetooth Configuration Panel → Client Applications → Bluetooth Serial Port → General tab provides options to configure:

- ◆ The application name -- to change it, highlight the existing name and enter the new name.
- ◆ Enable or disable secure connection. To enable secure connection, place a checkmark in the box.
- ◆ The communications port (COM port) to be used.

---

## Dial-up Networking

---

### Overview

The Bluetooth Dial-up Networking application allows this computer to use a modem that is physically connected to a remote device to access the Internet, and log on to a remote network.

### Create a Dial-up Networking connection

Open a connection to the Dial-up Networking service that is provided by another Bluetooth device using one of these techniques:

- ◆ Windows system tray, Bluetooth icon
- ◆ From My Bluetooth Places
- ◆ Using the Bluetooth Setup Wizard

After the Bluetooth dial-up networking connection is established it can be used the same way as any other networking connection. For example, you can open a browser and explore the World Wide Web, if the remote computer has Internet access.

### Close a Dial-up Networking connection

- ◆ If the connection was established via the Bluetooth icon in the Windows system tray; click the Bluetooth icon, select Quick Connect, Dial-up Networking and then select the device that is providing the service (active connections have a checkmark in front of them). or
- ◆ No matter how the connection was created, In My Bluetooth Places, right-click the service name and select Disconnect.

### Configure

The Bluetooth Configuration Panel → Client Applications → Dial-up Networking → General tab provides options to configure:

- ◆ The application name -- to change it, highlight the existing name and enter the new name.
- ◆ Enable or disable secure connection. To enable secure connection, place a checkmark in the box.
- ◆ The Bluetooth virtual device to be used.



---

# FAX

---

## Overview

The Bluetooth Fax service allows this computer to send a fax using a Fax/Modem that is physically connected to a remote device.

## To Send a Fax

1. Open a connection to the Fax service that is provided by another Bluetooth device, using one of these techniques:
  - Windows system tray, Bluetooth icon
  - From My Bluetooth Places
  - Using the Bluetooth Setup Wizard
2. Open or create the document to be faxed and select the “Print”, “Send to Fax Recipient” or similar command that is available in most applications.

## Close a Fax Connection

Fax connections close automatically when the Fax transmission is complete.

## Configure

The Bluetooth Configuration Panel → Client Applications → Fax → General tab provides options to configure:

- ◆ The application name -- to change it, highlight the existing name and enter the new name.
- ◆ Enable or disable secure connection. To enable secure connection, place a checkmark in the box.

---

# Headset

---

## Overview

The Headset application allows this computer to use a Bluetooth headset (or any other device that offers the Bluetooth headset service) as the audio input and output device for this computer.

Possible uses include:

- ◆ If this computer has on-board telephone hardware, a Bluetooth headset might be used as the audio input/output device to make/receive telephone calls.
- ◆ If this computer has voice recognition capabilities, a Bluetooth headset might be used as the audio input device.

Any other scenario that requires audio input/output can potentially take advantage of a Bluetooth headset to replace a hardwired microphone and/or speakers.

## Create a Headset connection

Establish a connection using one of these techniques:

- ◆ Windows system tray, Bluetooth icon
- ◆ From My Bluetooth Places
- ◆ Using the Bluetooth Setup Wizard

***NOTE: Most Bluetooth headsets “ring” when a connection is attempted; answer the ring to complete the connection and begin using the headset as the audio input/output device for this computer.***

## Close a Headset connection

- ◆ If the connection was established via the Bluetooth icon in the Windows system tray; click the Bluetooth icon, select Quick Connect,

Headset and then select the device that is providing the service (active connections have a checkmark in front of them). or

- ◆ No matter how the connection was created, in My Bluetooth Places, right-click the service name and select Disconnect.

## **Configure**

The Bluetooth Configuration Panel → Client Applications → Headset → General tab provides options to configure:

- ◆ The application name → to change it, highlight the existing name and enter the new name.
- ◆ Enable or disable secure connection. To enable secure connection, place a checkmark in the box.

---

## **File Transfer**

---

### **Overview**

The Bluetooth File Transfer application allows this computer to perform file operations on the Bluetooth Exchange Folder (and the folders and files it contains) of a remote device.

### **Copy to/from a remote device**

In the Folders pane of Windows Explorer, from the Entire Bluetooth Neighborhood branch, select a device and expand that branch to view the Bluetooth Exchange Folder of the remote device.

Use drag-and-drop to copy any file or folder contained in the Public Folder of the remote device to the desired folder on this computer.

You can also drag-and-drop files or folders from this computer to the Public Folder (and its sub-folders) of the remote device.

## Other file operations

Right-click a file or folder in the remote device's Public Folder for a context sensitive menu. All potential menu options may not be available at all times.

Potential menu options include:

- ◆ Open -- opens the selected file on this computer, using the default application for this type of file.
- ◆ Print -- sends the selected file to this computer's default printer.
- ◆ Send To
- ◆ 3 ½ floppy (A) -- the 3 ½ inch floppy drive on this computer
- ◆ Bluetooth Exchange Folder -- the Bluetooth Exchange Folder on this computer.
- ◆ Rename -- applies only to empty folders; file names and the names of folders that contain objects cannot be changed using this technique.
- ◆ Cut, Copy, Paste, Delete, Refresh, View & New -- standard Windows functions.

## Configure

The Bluetooth Configuration Panel > Client Applications > File Transfer > General tab provides options to configure:

- ◆ The application name -- to change it, highlight the existing name and enter the new name.
- ◆ Enable or disable secure connection. To enable secure connection, place a checkmark in the box.

---

## Network Access

---

### Overview

The Bluetooth Network Access application makes it possible for this computer:

- ◆ To connect to a Local Area Network via a physical connection on a remote Bluetooth device. or
- ◆ To connect to an ad hoc network provided by a remote Bluetooth device.

The type of network connection that is available is determined by the configuration of the remote Bluetooth device.

### Create a Network Access connection

Establish a connection using one of these techniques

- ◆ Windows system tray, Bluetooth icon
- ◆ From My Bluetooth Places
- ◆ Using the Bluetooth Setup Wizard

### Close a Network Access connection

- ◆ If the connection was established via the Bluetooth icon in the Windows system tray; click the Bluetooth icon, select Quick Connect, Network Access and then select the device that is providing the service (active connections have a checkmark in front of them). or
- ◆ No matter how the connection was created, In My Bluetooth Places, right-click the service name and select Disconnect.

## Configure

The Bluetooth Configuration Panel → Client Applications → Network Access → General tab provides options to configure:

- ◆ The application name -- to change it, highlight the existing name and enter the new name.
- ◆ Enable or disable secure connection. To enable secure connection, place a checkmark in the box.

---

## PIM Synchronization

---

### Overview

The PIM Synchronization Application is used to synchronize the Personal Information Manager (PIM) database of this computer with the PIM database of a remote Bluetooth device.

The supported PIMs are:

- ◆ Microsoft Outlook
- ◆ Microsoft Outlook Express
- ◆ Lotus Notes

The supported data types are:

- ◆ Business cards
- ◆ Calendar items
- ◆ Email (with or without attachments)
- ◆ Notes

## Configure PIM Synchronization

The Bluetooth Configuration Panel → Client Applications → PIM Synchronization → General tab provides options to configure:

- ◆ The application name -- to change it, highlight the existing name and enter the new name.
- ◆ Enable or disable secure connection. To enable secure connection, place a checkmark in the box.
- ◆ The PIM items to be synchronized and the PIM on this computer
- ◆ The data item types which can be synchronized are:
  - Business cards
  - Calendar items
  - Email (with or without attachments-see below)
  - Notes

Possible synchronization options for each of these data item types include:

- ◆ Do Not Synchronize-this item type will not be synchronized
- ◆ Synchronize Microsoft Outlook -- this item type will be synced with its matching entry in Microsoft Outlook, regardless of the PIM that contains this entry on the remote device. If a matching Outlook entry does not exist, it will be created
- ◆ Synchronize Outlook-Express -- this item type will be synced with its matching entry in Express, regardless of the PIM that contains this entry on the remote device. If a matching Express entry does not exist, it will be created
- ◆ Synchronize Lotus Notes -- this item type will be synced with its matching entry in Lotus Notes, regardless of the PIM that contains this entry on the remote device. If a matching Notes entry does not exist, it will be created.
- ◆ Email attachments. The only option is include or do not include attachments with email that is sent or received on this computer using this service.

---

## PIM Item Transfer

---

### Overview

The Bluetooth PIM Item Transfer application allows this computer to send and receive Personal Information Manager items to-and-from a remote Bluetooth device. Item transfer can be accomplished several ways:

To send, receive or exchange business cards:

1. From Windows Explorer, My Bluetooth Places, right-click the PIM Item Transfer service on a remote device and select the appropriate option. Or In the Windows system tray, right-click the Bluetooth icon, select Quick Connect > Business Card Exchange, select a device from the list, select the appropriate option from the shortcut menu, and then click OK.
2. From Windows Explorer, My Bluetooth Places, highlight the PIM Item Transfer service on a remote device, and then, from the Bluetooth menu on the Windows menu bar, select the appropriate action. In addition to the business card options listed above, you can also send Notes (\*.vnt), Email (\*.vmg) and Calendar (\*.vcs) items from this menu.
3. From within a supported Personal Information Manager, select one or more items and then, from the PIM's File menu, select Send to Bluetooth.

Whether sent items are accepted by the remote device is determined by how the remote device's PIM Item Transfer service is configured.

### Close a PIM Item Transfer Connection

This application closes the open connection automatically when its task is complete.



## Configure PIM Item Transfer

The Bluetooth Configuration Panel → Client Applications → PIM Item Transfer → General tab provides options to configure:

- ◆ The application name -- to change it, highlight the existing name and enter the new name.
- ◆ Enable or disable secure connection. To enable secure connection, place a checkmark in the box.
- ◆ How your business card is handled when it is requested by a remote device. The Send My Business Card options are:
  - Choose a business card as needed-each time a remote device requests your business card you must select a card from your PIM. If you ignore the request the remote device will receive a timeout notice.
  - Always send the same business card-when this option is selected a dialog appears that allows you to set a default business card, which will be sent automatically when requests are received.
- ◆ Where to store received business cards. The Received Business Cards options are:
  - Microsoft Outlook
  - Outlook Express
  - Lotus Notes
- ◆ Email attachments. The only option is include or do not include attachments with email that is sent or received on this computer using this service.

---

# Printer

---

## Overview

The Bluetooth Printer application allows this computer to use a Bluetooth printer. Once a Bluetooth printer has been properly installed, it can be used from this computer in the same way as any other printer would be.

## Configure

The Bluetooth Configuration Panel → Client Applications → Printer → General tab provides options to configure:

- ◆ The application name -- to change it, highlight the existing name and enter the new name.
- ◆ Enable or disable secure connection. To enable secure connection, place a checkmark in the box.

## Install a Bluetooth Printer

### Option One:

1. Perform a search for devices and then, from Entire Bluetooth Neighborhood, right-click a Bluetooth printer, select Add Printer from the shortcut menu and follow the on-screen instructions.
2. When the wizard asks you to select a printer make and model, do so.  
  
If your printer is not in the list of options, click Have Disk..., insert the driver disk for the printer, and then navigate to the drive and directory that contains the driver initiation file (\*.inf) for the printer.
3. To complete the installation, follow the on-screen instructions.

## **Option Two:**

1. From the Windows Control Panel, select Printers → Add Printer → Next → Local printer → Next.
2. On the Select the Printer Port screen of the wizard:
  - a. Select Create a new port
  - b. In the Type shortcut menu, select Bluetooth Printer Port, and then click Next.
3. On the next screen, select the printer by name, and then click Connect.
4. Install the driver: when asked to select a printer make and model, do so.

If your printer is not in the list of options, click Have Disk..., insert the driver disk for the printer, and then navigate to the drive and directory that contain the driver initiation file (\*.inf) for the printer.

5. To complete the installation, follow the on-screen instructions.

## **Delete a printer**

Click Start → Settings → Printers, right-click the printer to be deleted, and then select Delete from the shortcut menu. or

In Entire Bluetooth Neighborhood, right-click an installed Bluetooth printer and select Delete Printer from the shortcut menu.

# BLUETOOTH SERVICE

---

## Common Configuration Settings

These properties can be set individually for each Bluetooth service:

- ◆ Service Name -- the default name of each service can be changed.
- ◆ Secure Connection -- requires that remote devices provide proof of identity and that all data be encrypted.
- ◆ Startup Automatically -- starts the service automatically when Bluetooth is started.
- ◆ Notifications -- provides visual and/or audio notification that a remote device is attempting to connect (or has connected) to a service on this computer.

---

## Notifications Service

---

### Overview

There are three types of notification:

- ◆ Authentication request, also called a PIN code request -- this notification appears automatically in a balloon over the Windows system tray if a Personal Identification Code is required before a connection can proceed. An audio file can also be associated with the notification.
- ◆ Authorization request, also called a connection request -- this type of notification can be visual, audio, or both. It notifies you of attempts to access a Bluetooth service on this computer; the connection will not proceed until you click the balloon that appears over the Windows system tray. If the notification balloon is ignored, the connection request will time out and fail.
- ◆ Notification only -- this type of notification does not effect access in any way; it is solely for information purposes to let you know that a connection has been established.

## Example

Both Authentication and Authorization request notifications are controlled by whether Secure Connection is enabled for an individual service.

An example of how notifications might work when a remote device attempts to access a service on this computer, if all notifications are enabled:

1. Authentication: a balloon notification (audio optional) appears to prompt for a PIN code. If the PIN code does not match the code entered on the remote device, the connection will not be allowed. Once the remote device has been authenticated this notification will not appear again, unless the paired relationship is broken and the devices must re-pair.
2. Authorization: a balloon notification appears and/or a sound file provides audio notification that a remote device is attempting to access a Bluetooth service on this computer. Click the balloon to proceed. A dialog box appears that offers the option of letting the connection proceed this time only or to always allow this particular remote device to use the service it is attempting to access.
3. Once a connection has been authorized, an additional visual and/or audio notification may appear (if enabled). This notification is for information only to inform the operator that a connection has been established.

After two devices are paired (step 1, above), the authentication notification will no longer appear when a connection is attempted.

If “Always allow...” is enabled during the authorization process (step 2, above), the authorization notification will not appear on future connection attempts.

Connection notification (step 3, above) only happens if it has been enabled on the Notifications tab of the individual service being accessed.

## Service Access Notification

“Notifications” lets you associate a sound (Windows \*.wav file) and/or a visual indication with access attempts by remote devices.

A different notification sound can be associated with each local Bluetooth service.

### Associate a sound with service access

From the Bluetooth Configuration Panel, Local Services tab:

1. Double-click a service name and then select the Notifications tab.
2. Check the desired options; visual and sound may both be selected for a single event.
3. Choose a sound; click the Browse button and navigate to the sound file (\*.wav) to be used for notification.

To preview the sound file, click the play button.

4. Click OK to close the service’s property dialog box.

---

## Audio Gateway Service

---

The Bluetooth Audio Gateway service allows this computer to use a remote Bluetooth device’s microphone and speakers as this computer’s input and output devices.

For example, if this computer has voice recognition capabilities, a Bluetooth headset might be used as the audio input device.

### Hardware Requirements

- ◆ The Bluetooth radio on both this computer and the remote device must support audio.
- ◆ The remote device handles both audio input and output for this computer; therefore, this computer does not require a sound card, microphone or speakers.

## **Configure the Audio Gateway Service**

From the Windows system tray, right-click the Bluetooth icon, select Advanced Configuration → Local Services, and then double-click the Audio Gateway service.

Set the common configuration properties of the service, and then click OK.

---

## **Bluetooth Serial Port Service**

---

The Bluetooth Serial Port service allows a remote Bluetooth device to establish a wireless serial connection with this computer. The wireless serial connection may be used by applications as though a physical serial cable connected the devices.

### **To establish a Bluetooth Serial Port connection**

The connection must be initiated from the remote device by the Bluetooth Serial Port application.

### **Determine the communications port being used by this computer for the Bluetooth Serial Port**

In the Windows system tray, right-click the Bluetooth icon, select Advanced Configuration, and then the Local Services tab. The COM port assigned to this service is the last item in the Bluetooth Serial Port service row. Configure the application on this computer that will use this service to send its data to this COM.

### **Add a Bluetooth Serial Port**

The Bluetooth Serial Port service has one pre-configured Bluetooth Serial Port, but additional Bluetooth Serial Ports can be added as needed.

## To add a port

1. From the Bluetooth Configuration Panel, Local Services tab, click Add Serial Service.
2. In the properties dialog box, modify the properties.
3. Enter a unique name (less than 99 alphanumeric characters).
4. Select secure connection, if desired.
5. Select Startup Automatically, if desired.
6. From the COM Port shortcut menu select a communications port that is not assigned to any other service.
7. Click OK.

## To remove a Bluetooth Serial Port

From the Bluetooth Configuration Panel, Local Services tab, select the port to be removed and then click Delete.

**NOTE:** *The Delete button is only available when a Bluetooth Serial Port is selected.*

---

## Dial-up Networking Service

---

The Bluetooth Dial-up Networking service makes it possible for a remote Bluetooth device to use a modem that is physically connected to this computer. The remote device can then access the Internet or log on to a remote network.

## Configure the Dial-up Networking service

From the Windows system tray, right-click the Bluetooth icon, select Advanced Configuration → Local Services, and then double-click the Dial-up Networking service.

- ◆ Select the physical modem to be used from the Modems: shortcut menu.
- ◆ Set the common configuration properties of the service, and then click OK.



---

## FAX Service

---

The Fax service allows a remote Bluetooth device to send a Fax via a modem that is physically attached to this computer.

### Configure the Fax service

From the Windows system tray, right-click the Bluetooth icon, select Advanced Configuration → Local Services, and then double-click the Fax service.

- ◆ Select the physical modem to be used from the Modems: shortcut menu.
- ◆ Set the common configuration properties of the service, and then click OK.

---

## File Transfer Service

---

The File Transfer service allows this computer to perform file operations on the Bluetooth Exchange Folder (and the folders and files it contains) of a remote device.

### Basic setup procedure

Right-click the Bluetooth icon and select Explore My Bluetooth Places.

Configure Windows Explorer so that the Folders pane is visible (View → Explorer Bar → Folders).

In the Folders pane, select Entire Bluetooth Neighborhood and then, on the menu bar, select Bluetooth → Search For Devices.

In the Folders pane, expand Entire Bluetooth Neighborhood to show the devices in the vicinity.

## **Copy to/from a remote device**

In the Folders pane of Windows Explorer, from the Entire Bluetooth Neighborhood branch, select a device and expand that branch to view the Bluetooth Exchange Folder of the remote device.

Use drag-and-drop to copy any file or folder contained in the Public Folder of the remote device to the desired folder on this computer.

You can also drag-and-drop files or folders from this computer to the Public Folder (and its sub-folders) of the remote device.

## **Other file operations**

Right-click a file or folder in the remote device's Public Folder for a context sensitive menu. All potential menu options may not be available at all times.

Potential menu options include:

- ◆ Open -- opens the selected file on this computer, using the default application for this type of file.
- ◆ Print -- sends the selected file to this computer's default printer.
- ◆ Send To
  - 3 ½ floppy (A) -- the 3 ½ inch floppy drive on this computer
  - Public Folder on My Device -- the Public Folder on this computer.
- ◆ Rename -- applies only to empty folders; file names and the names of folders that contain objects cannot be changed using this technique.
- ◆ Cut, Copy, Paste, Delete, Refresh, View & New -- standard Windows functions.

---

## Headset Service

---

The Bluetooth Headset Service allows this computer to provide audio input/output for remote Bluetooth devices.

For example, if the remote device is a Bluetooth telephone, this computer's microphone and speakers can be used as speakerphone input and output for that device.

### Hardware Requirements

- ◆ This computer must have a sound card, microphone, and speakers installed.
- ◆ The Bluetooth radio on both on this computer and the remote device must support audio.

### Configure the Headset Service

- ◆ From the Windows system tray, right-click the Bluetooth icon, select Advanced Configuration → Local Services, and then double-click the Headset service.
- ◆ Set the common configuration properties of the service, and then click OK.

---

## Network Access Service

---

The Bluetooth Network Access service makes it possible for a remote Bluetooth device to access a Local Area Network that is physically attached to this computer or allows a remote device to become part of an ad hoc network provided by this computer.

After this computer has been configured to provide the Network Access service to other Bluetooth devices, it will not be able to use the Bluetooth Network Access service provided by another Bluetooth device without being re-configured. Put another way, this computer cannot be both a Bluetooth Network Access server and a Bluetooth Network Access client at the same time.

### Setup for Windows 98SE & Windows Me

***NOTE: Internet Protocol routing software is required on Windows 98SE and Windows Me servers.***

***Install and configure the routing software as instructed by the software's manufacturer.***

#### **Configure the server:**

1. From the Windows Control Panel, double-click the Network icon.
2. On the Configuration tab, select TCP/IP → Bluetooth LAN Access Server Driver (scroll down if necessary).
3. Click Properties and select the IP Address tab.
  - a. Select Specify an IP address
  - b. Enter an IP Address (suggested value—192.168.1.1)
  - c. Enter a Subnet Mask (suggested value—255.255.255.0)
4. Click OK twice to close the dialog boxes and then click YES to restart the computer.

## **Setup for Windows 2000 and Windows XP**

If Internet Connection sharing was previously enabled (before BTW was installed) it must be disabled and then re-enabled before the Bluetooth network adapter can use it.

Configure for Network Access:

1. From the Windows system tray, right-click the Bluetooth icon and select Advanced Configuration from the shortcut menu.
2. In the Bluetooth configuration panel, select the Local Services tab, Network Access and then click Properties....
3. From the Network Access, General properties page, in the Type of service shortcut menu, select “Allow other devices to access the Internet/LAN via this computer,” and then click Configure Connection Sharing.
4. Right-click Local Area Connection, select Properties and then select the Sharing tab.
5. Select Enable Internet Connection Sharing for this connection, click OK, and then click YES in the confirmation dialog box.

## **Configure for Group Ad Hoc Networking:**

1. From the Windows system tray, right-click the Bluetooth icon and select Advanced Configuration from the shortcut menu.
2. In the Bluetooth configuration panel, select the Local Services tab, Network Access and then click Properties....
3. From the Network Access, General properties page, in the Type of service shortcut menu, select “Allow other devices to create a private network with this computer.”
4. Click OK.

---

## PIM Item Transfer

---

### Overview

The PIM Item Transfer service allows Personal Information Manager items to be transferred between this computer and a remote Bluetooth device.

Four data types are supported:

- ◆ Business Cards
- ◆ Calendar Items
- ◆ Email Messages
- ◆ Notes

Each data type can be saved in any of the supported and installed PIMs.

When the PIM that is associated with an individual data type is changed on the PIM Item Transfer page, that data type is also changed for the PIM Synchronization service.

### Configure

In addition to the configuration options common to all Bluetooth services, this service also has settings that determine:

- ◆ How business card requests are handled. The options are:
  - Never send my business card -- ignore the request.
  - Choose a business card as needed -- when prompted, select a business card to be sent to the requester.
  - Always send the same business card -- when a request is received always send the same business card. When this option is selected, a dialog box appears from within which an installed Personal Information Manager (if more than one is installed on this computer) and an existing business card can be selected.

- Previously sent business cards -- once a card is selected using the “Always send the same business card” option, above, that card will be added to the shortcut menu as an option.
- ◆ Where to store inbound data items, on an individual basis. Options include (not all options apply to all items):
  - Do Not Accept
  - Any of the installed PIMs on this computer
  - Save to Folder
- ◆ The Bluetooth Exchange Folder location—the directory on this computer where inbound items that are not to be saved in a PIM will be kept.
- ◆ Whether to send/receive attachments with email. Check or clear this option, as appropriate.

### **Close a PIM Item Transfer connection**

PIM Item Transfer connections close automatically when the data transfer is complete.

### **Default Business Card Selection**

When the “Always send the same business card” option is selected, a dialog box appears to allow the selection of a default business card.

The first time the dialog box appears it provides a way to choose the Personal Information Manager that stores the default business card. Click the down-arrow in the PIM shortcut menu and select the PIM to be used.

On subsequent appearances of this dialog box, the PIM selection option is not available.

## **Change the selected PIM**

On the PIM Item Transfer properties page, “Received items” section, there is a Business Cards shortcut menu. When a PIM was selected during initial setup the selected item in this menu was set to the same PIM. To change the PIM used for the default business card, open this shortcut menu and select a new PIM.

### **Choose a default business card**

1. In the Select a Bluetooth Business Card dialog box that appears when “Always send the same business card” is selected, highlight the card.
2. Click OK to choose a highlighted business card and return to the PIM Item Transfer Properties page. The chosen contact now appears in, and is selected in, the “Business card requests” shortcut menu.

If the “Always send the same business card” option is selected again, and a different contact chosen, the properties page will display both contacts in the shortcut menu.



---

## PIM Synchronization

---

The PIM Synchronization service can be used by a remote device to synchronize its Personal Information Manager (PIM) database with the PIM database of this computer.

Four data types are supported:

- ◆ Business cards
- ◆ Calendar items
- ◆ Email messages
- ◆ Notes

Whether an individual item is accepted and where it is stored, when accepted, is configured in the PIM Item Transfer service. If that service is not configured to store a particular data type in Outlook, then that data type cannot be synchronized.

***NOTE: Data types that will be synchronized must be saved in the PIM database (this is configured in the PIM Item Transfer service); otherwise, that data type will not be available for selection (it will be grayed out) in the PIM Synchronization configuration settings.***

Microsoft Outlook permits duplicate entries, so all duplicates may not be exchanged in the synchronization process.

***NOTE: Only Outlook's default contacts folder is synchronized. Items in sub-folders are not synchronized. Items that are moved from the default folder to a sub-folder will appear to have been deleted the next time synchronization takes place.***

# BLUETOOTH SETTINGS

---

## Hardware Settings

---

The Hardware tab of the Bluetooth Configuration Panel provides basic information about the Bluetooth hardware installed on this computer and access to the Advanced Settings dialog box, if required:

- ◆ Devices:
  - Name: the name of the device, e.g., WIDCOMM Bluetooth Device
  - Type: the type of device, e.g., USB.
- ◆ Device Properties:
  - Device status: indicates that the device is operating properly or that there is a problem/conflict.
  - Manufacturer: the name of the company that manufactured the device selected in the Devices section of this dialog box.
  - Firmware Revision: the manufacturer's firmware version number.
  - Device Address: the Bluetooth Device Address (BDA or BD\_Addr) assigned to this device when it was manufactured.
  - HCI Version: the version number of the Bluetooth Specification that the Host Controller Interface complies with.
  - HCI Revision: the revision number of the Bluetooth Specification that the Host Controller Interface complies with.
  - LMP Version: the version number of the Bluetooth Specification that the Link Manager Protocol complies with.
  - LMP Sub Version: the sub-version number of the Bluetooth Specification that the Link Manager Protocol complies with.
- ◆ The Advanced button: displays the Advanced Settings dialog box, which allows you to select the country code and transmission power settings. This option is not available on all systems.

---

## Advanced Settings

---

When available, this dialog box is reached from the Hardware tab of the Bluetooth Configuration Panel.

*NOTE: Depending on the country in which the hardware is sold and/or in which it will be used, the Advanced button may not be present.*

From this dialog box you can set the:

- ◆ Country Code:
  - North America, Europe (except France), and Japan
  - France and China
- ◆ Maximum Transmission Power:
  - High
  - Medium
  - Low

Click Apply to implement the changes. A dialog box appears with notification that the Bluetooth device attached to this computer must be reset before the change(s) will take effect.

Click Yes to reset the Bluetooth device now -- all open Bluetooth connections will be closed.

Click No to save the changes -- the changes will be applied the next time the Bluetooth device is reset or restarted.

---

## Accessibility Settings

---

The Accessibility tab of the Bluetooth Configuration Panel lets you specify whether remote devices may access this computer, which remote devices have access, and whether an audio warning is played when a Personal Identification Number (PIN code) is required.

### **Allow other devices to discover this computer**

Select “Let other Bluetooth devices discover this computer” to permit remote Bluetooth devices to find and report this computer.

If “Allow No devices” (below) is selected, this option is not available.

### **Control the types of devices that are allowed to connect to this computer**

From the “Devices allowed connecting to this computer” shortcut-menu, select:

- ◆ No devices -- no remote devices are permitted to initiate a connection with this computer. However, this computer can still initiate connections with remote Bluetooth devices.
- ◆ All devices -- all remote devices are permitted to connect to this computer.
- ◆ Connections are subject to additional security restrictions, such as authentication and authorization that may be required by the individual services provided by this computer.
- ◆ Only paired devices -- only devices that have been paired with this computer are allowed to connect to it.
- ◆ Only devices listed below -- only the listed devices are allowed to connect to this computer (see Accessibility, adding and deleting devices).

## **Choose an audio notification file**

When Secure Connection is enabled for any of the Bluetooth Services on his computer a PIN code is required before that service can be accessed. To chose a notification sound that will play when a remote device attempts to access a service that requires a secure connection, click Select audio file... and select the sound (\*.wav) file to be played.

Limit access to this computer to specific remote devices

From the Bluetooth Configuration Panel, Accessibility tab, in the Allow shortcut menu, select “Only devices listed below”.

## **Add a device to the list**

1. Click Add Device.
2. In the Devices with access... dialog box select the desired device(s) and click OK.

## **Delete a device from the list**

In the list of devices allowed to access this computer, select the device to be removed from the list, and then click Delete.

---

## **Discovery Settings**

---

The settings on the Discovery tab of the Bluetooth Configuration Panel determine whether this computer looks for other Bluetooth devices automatically, how often it looks and what type of devices it looks for.

## **Periodic Search for Devices**

When “Look for other Bluetooth devices” is selected, Bluetooth automatically searches for devices every X minutes. X is an whole number between 1 and 60. To change the time between auto inquiries, highlight the existing time and enter the new time.

## **Determine the devices that will be reported**

Bluetooth can screen out devices that you do not need access to.

The options are:

- ◆ Report all Bluetooth devices.
- ◆ Report only selected Bluetooth devices (see *Discovery, Adding Specific Devices* and *Discovery, Deleting Specific Devices*).
- ◆ Select the desired option from the drop-down list.

## **Discover Specific Devices**

The type of device(s) that this computer looks for and reports when it is searching for other Bluetooth devices can be limited.

Limit the remote devices reported

Bluetooth can report only specific devices, specific class (es) of device(s), or specific type(s) of device(s) within a class.

- ◆ Specific devices: an individual computer or Bluetooth cellular telephone is examples of specific devices.
- ◆ Specific class of device: “computer” is an example of a class of devices.
- ◆ Specific type of device within a class: “laptop” is an example of a specific type of device within the “computer” class of devices.

The devices to be discovered can be mixed-and-matched; you can discover one or more specific devices, classes of devices and types of devices within a class at the same time.

## **Remove a device from the list of devices to be discovered**

In the Bluetooth Configuration Panel, from the Discovery tab, select the device to be removed and click the Delete button.

### **Temporarily override the discovery of specific devices**

In the Bluetooth Configuration Panel, from the Discovery tab, select “Report all Bluetooth devices.” The specifically selected devices will be discovered along with all other devices.

To re-enable specific device discovery re-select “Report only selected Bluetooth devices.”

# SECURITY

---

## Authentication

---

Authentication is used to verify identity; it requires a passkey or link key from the remote device. When a remote device attempts access, a visual and/or audio warning notifies the local operator.

If the notification is ignored, access is denied after a preset timeout.

When devices are “paired,” those devices automatically exchange a link key and Authentication is carried out without operator intervention.

---

## Authorization

---

Authorization is Yes-or-No security that requires operator intervention to avoid having the connection time out and fail.

Authorization is limited to:

- ◆ Yes, you may connect (click the balloon to proceed).
  - ◆ No, you may not connect (ignore the balloon prompt and the connection will fail).
- 

## Bluetooth Device Identity

---

Every Bluetooth device has a unique Bluetooth Device Address (BDA) assigned to it during the manufacturing process. This address cannot be changed by the end-user.

A device's BDA is usually displayed in hexadecimal format; 00:40:F4:39:57:6D is a valid BDA.

Each Bluetooth device also has an operator-configurable, user-friendly name to help distinguish it from other devices. The user-friendly name may be up to 99 alphanumeric characters in length and may contain spaces. *My Personal Computer* is a valid user-friendly name.

---



---

## Encryption

---

Encrypting data translates it into an unreadable format using a secret key or password. Decrypting the data requires the same key or password that was used to encrypt it.

---

## Link Key

---

A unique, internally generated, access code based on a passkey, the Bluetooth Device Address and an internally generated random number. Link keys are generated automatically when devices Pair.

After a link key is generated, manual entry of the passkey is not required.

---

## Pairing Devices

---

Pairing allows you to avoid entering access information each time a connection is attempted. Paired devices share a unique link key, which they exchange each time they connect.

### **Paired devices remain paired even when**

- ◆ One of the devices is not on
- ◆ A service connection is interrupted or the service stopped
- ◆ One or both devices are rebooted.

### **To Pair with another device**

If Secure Connection is enabled, devices will pair automatically the first time they connect (a passkey must be successfully exchanged).

To pair with a device manually:

In the Folders pane of My Bluetooth Places, right-click a device, select Pair Device from the shortcut menu, and then follow the on-screen instructions.

## **Remove Pairing**

In the Folders pane of My Bluetooth Places, right-click a paired device and select Unpair Device from the shortcut menu.

---

## **Passkey**

---

An alphanumeric string up to 16 characters in length. Passkeys are also called Personal Identification Numbers, or PIN codes.

A passkey may be required if the Secure Connection option is enabled for a Bluetooth service or application.

---

## **Secure Connection**

---

A passkey or link key is required each time a connection is attempted.

All data exchanged over the Bluetooth connection is encrypted.

Depending on other configuration options, authorization may also be required.

---

## **Security Request Dialog Box**

---

A Bluetooth passkey request and/or Bluetooth Authorization request balloon may appear over the Windows system tray when a connection is attempted if Secure Connection is enabled.

Click the balloon to proceed.

# SPECIFICATIONS

---

Standards:	Bluetooth v2.0+EDR Specification Compliant Universal Serial Bus v2.0, v1.1, v1.0
Interface:	USB v2.0 with Type-A plug (backward compatible with USB v1.0, v1.1)
Data Speed:	Basic data rate: up to 723.2Kbps Enhanced data rate: up to 2Mbps and 3Mbps
Frequency band:	2.400~2.4835GHz
Modulation Technology:	FHSS (Frequency Hopping Spread Spectrum) GFSK(Gaussian Frequency Shift Keying)
Modulation Schemes:	$\pi/4$ DQPSK 8DPSK
Range Coverage:	Up to 10Meters, Bluetooth Class II (depends on environment)
LED indicators:	Power, Activity
EMI Compatibility:	FCC Class B, CE Class B,
Bluetooth Certificate:	BQB Certified
Dimensions:	46 x 18.5 x 9 mm
Storage Temperature:	Storage: -10°C ~ 65°C Operation: 0°C ~ 40°C
Humidity: (non-condensing)	Storage: 5% ~ 90% Operation: 5% ~70%
Supported Profile:	Bluetooth GAP, GOEP, SPP, FTP, OPP, DUN, SYNC, FAX, PAN, HID, HSP, HRCp, BIP, BPP, GAVDP, A2DP, AVRCP, DUN
Configuration Utility:	Windows 98/2000/Me/XP