

Specific Absorption Rate (SAR) Test Report**ZyXEL Communications Corporation****802.11g Wireless CardBus Card****Model Number: G-120**

Test Report: EME-060717

Issue date: Jun. 30, 2006

Total No of Pages Contained in this Report: 111

Accredited for testing to FCC Part 15

Tested by: Kevin Chen	
Reviewed by: Jerry Liu	

Review Date: Jun. 30, 2006

All services undertaken are subject to the following general policy: Reports are submitted for exclusive use of the client to whom they are addressed. Their significance is subject to the adequacy and representative character of the samples and to the comprehensiveness of the tests, examinations or surveys made. This report shall not be reproduced except in full, without written consent of Intertek Testing Services, Taiwan Ltd.

Table of Contents

1.0 General information	3
1.1 Client Information.....	3
1.2 Equipment under test (EUT)	4
1.3 Test plan reference	4
1.4 Modifications required for compliance	4
1.5 Test configuration	5
1.5.1 Support equipment & EUT antenna position	5
1.5.2 Test Condition	6
2.0 SAR Evaluation.....	7
2.1 SAR Limits	7
2.2 Configuration Photographs	8
2.3 SAR measurement system	18
2.4 SAR measurement system validation	20
2.4.1 System Validation result	21
2.4.2 System Performance Check result.....	23
2.5 Test Result.....	25
3.0 Test Equipment	28
3.1 Equipment List.....	28
3.2 Tissue Simulating Liquid	29
3.2.1 Body Tissue Simulating Liquid	29
3.2.2 Body Liquid result.....	30
3.3 E-Field Probe and 2450 Balanced Dipole Antenna Calibration	31
4.0 Measurement Uncertainty	32
5.0 WARNING LABEL INFORMATION - USA	34
6.0 REFERENCES.....	35
7.0 Document Revision Record	36
APPENDIX A - SAR Evaluation Data	37
APPENDIX B - Photographs.....	86
APPENDIX C - E-Field Probe and 2450MHz Balanced Dipole Antenna Calibration Data	87

1.0 General information

The device was tested at the Intertek Testing Services facility in Hsinchu, Taiwan. The maximum output power declared by the ZyXEL.

EUT model # G-120 was evaluated accordance with the requirements for compliance testing defined in FCC OET Bulletin 65, Supplement C (Edition 01-01) and meet the SAR requirement, the phantom employed was the box phantom of 2mm thick in one wall. The total uncertainty for the evaluation of the spatial peak SAR values averaged over a cube of 1g tissue mass had been assessed for this system to be $\pm 20.6\%$, the dosimetry assessment system INDEXSAR SARA2 was used.

In summary, the maximum spatial peak SAR value for the sample device averaged over 1g was found to be:

Phantom	Position (worst case)	SAR _{1g} , W/kg
2mm thick box phantom wall	EUT perpendicular to phantom 0 mm separation with host 2 Notebook PC, 802.11b at channel 11	1.266 W/kg

In conclusion, the tested Sample device was found to be in compliance with the requirements defined in OET Bulletin 65, Supplement C (Edition 01-01) for body configurations.

1.1 Client Information

The G-120 has been tested at the request of:

Applicant: ZyXEL Communications Corporation
No. 6, Innovation Rd II, Science-Based Industrial Park,
Hsin-Chu, Taiwan

1.2 Equipment under test (EUT)**Product Descriptions:**

Equipment	802.11g Wireless CardBus Card		
Trade Name	ZyXEL	Model No:	G-120
FCC ID	I88G120	S/N No.	Not Labeled
Category	Portable	RF Exposure	Uncontrolled Environment
Frequency Band	2412 – 2462 MHz	System	DSSS, OFDM

EUT Antenna Description			
Type	PCB Printed	Configuration	Fixed
Dimensions	N/A	Gain	2 dBi
Location	Embedded		

Use of Product : **802.11g Wireless CardBus Card**

Manufacturer: **ZyXEL Communications Corporation**

Production is planned: [X] Yes, [] No

EUT receive date: Jun. 14, 2006

EUT status: Normal operating condition

Test start date: Jun. 28, 2006

Test end date: Jun. 28, 2006

1.3 Test plan reference

FCC Rule: Part 2.1093, FCC's OET Bulletin 65, Supplement C (Edition 01-01) and IEEE 1528

1.4 Modifications required for compliance

The EUT has no modifications during test.

1.5 Test configuration

Please refer to section 2.2 figure 2 ~ 18

1.5.1 Support equipment & EUT antenna position

Support Equipment				
Item #	Equipment	Brand	Model No.	S/N
1	Notebook PC	DELL	PP02X	8Y210A04
2	Notebook PC	HP	Compaq ux5000	CNU411174K
3	Notebook PC	Toshiba	PS240T-00UHY	92043590J



Host: DELL (1)



Host: HP (2)



Host: Toshiba (3)

1.5.2 Test Condition

During tests the worst-case data (max RF coupling) was determined with following conditions:

Usage	Operates with a portable computer	Distance between antenna axis at the joint and the liquid surface:	Laptop is touching the Phantom separating 0mm in bottom position, separating 0mm and 15mm in perpendicular position.	
Simulating human Head/ Body	Body	EUT Battery	Device is powered from host computer through battery.	
802.11b Conducted output Power	Channel	Frequency MHz	Before SAR Test (dBm)	After SAR Test (dBm)
	Low Channel - 1	2412	20.49	20.48
	Mid Channel - 6	2437	20.62	20.63
	High Channel- 11	2462	20.66	20.66
802.11g Conducted output Power	Channel	Frequency MHz	Before SAR Test (dBm)	After SAR Test (dBm)
	Low Channel – 1	2412	23.85	-
	Mid Channel – 6	2437	24.62	24.62
	High Channel- 11	2462	24.03	-

The spatial peak SAR values were assessed for lowest, middle and highest operating channels, defined by the manufacturer.

The conducted output power was measured before and after the test using a wideband peak power meter.

The EUT was transmitted continuously during the test.

The EUT contains 802.11b and 802.11g functions, after verify, the maximum of output power was occurred at 1Mbps data rate in 802.11b function and 6Mbps data rate in 802.11g functions. All the test data were performed under the above transmission rate.

2.0 SAR Evaluation

The evaluation of the result analysis was based on software: SARA2 Version 2.33VPM (Virtual Probe Miniaturization).

2.1 SAR Limits

The following FCC limits for SAR apply to devices operate in General Population/Uncontrolled Exposure environment:

EXPOSURE (General Population/Uncontrolled Exposure environment)	SAR (W/kg)
Average over the whole body	0.08
Spatial Peak (1g)	1.60
Spatial Peak for hands, wrists, feet and ankles (10g)	4.00

2.2 Configuration Photographs

SAR Measurement Test Setup

Figure 1: Test System



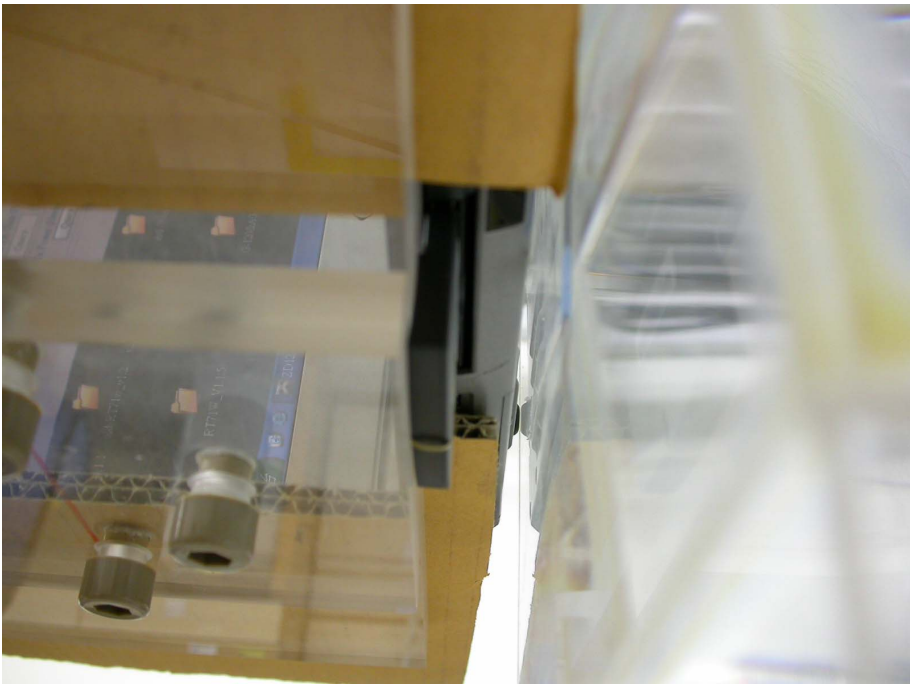
Test Equipment: Notebook (DELL)

SAR Measurement Test Setup

Figure 2: EUT bottom to phantom, 0 mm separation



Figure 3: EUT bottom to phantom, 0 mm separation-Zoom in



SAR Measurement Test Setup

Figure 4: EUT perpendicular to phantom, 0 mm separation



Figure 5: EUT perpendicular to phantom, 0 mm separation-Zoom in



SAR Measurement Test Setup

Figure 6: EUT perpendicular to phantom, 15 mm separation

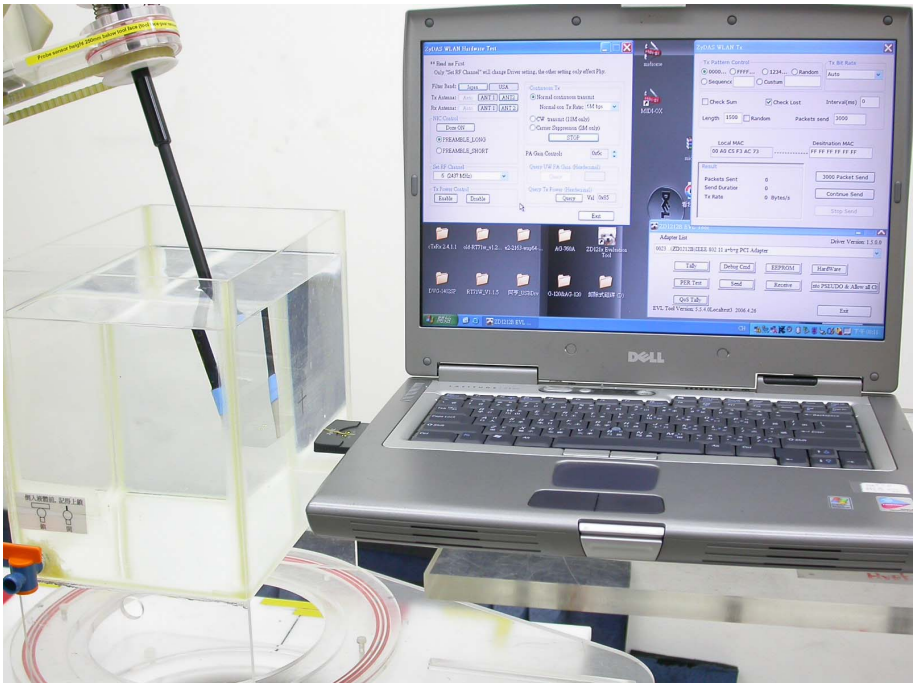


Figure 7: EUT perpendicular to phantom, 15 mm separation-Zoom in



Test Equipment: Notebook (HP)

SAR Measurement Test Setup

Figure 8: EUT bottom to phantom, 0 mm separation

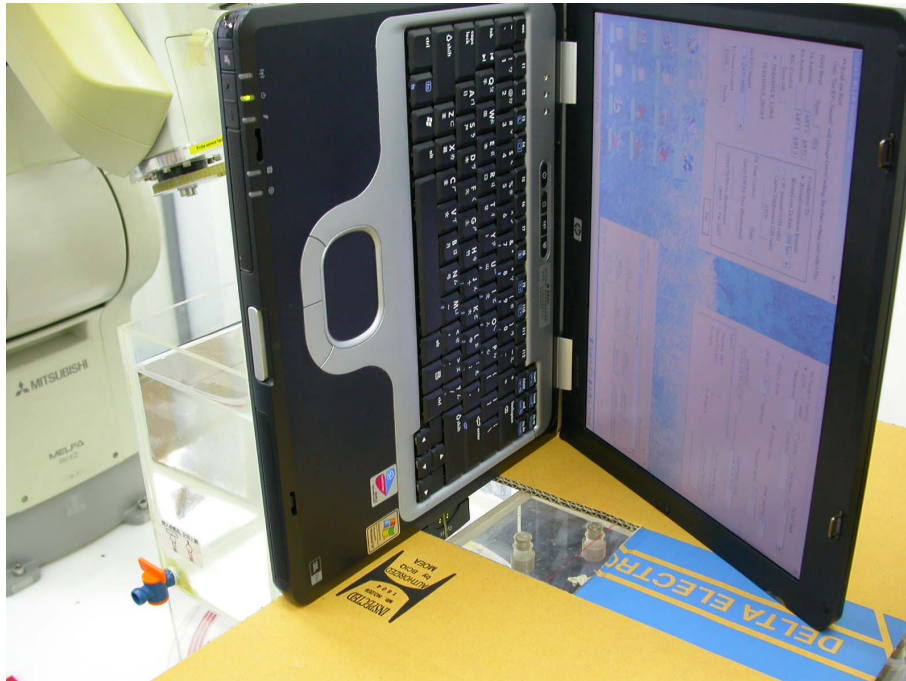
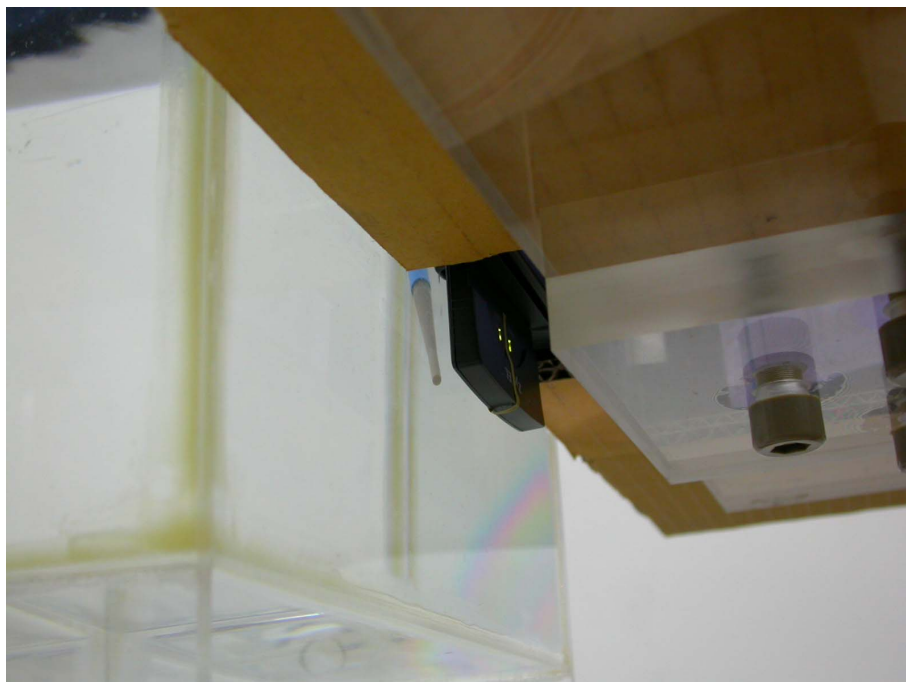


Figure 9: EUT bottom to phantom, 0 mm separation-Zoom in



SAR Measurement Test Setup

Figure 10: EUT perpendicular to phantom, 0 mm separation



Figure 11: EUT perpendicular to phantom, 0 mm separation-Zoom in

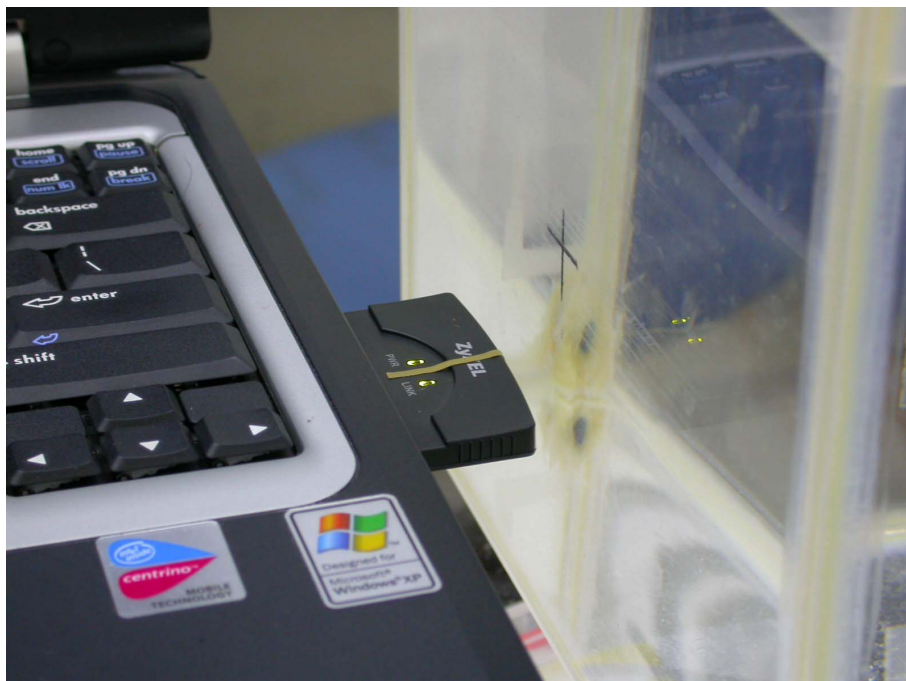


SAR Measurement Test Setup

Figure 12: EUT perpendicular to phantom, 15 mm separation



Figure 13: EUT perpendicular to phantom, 15 mm separation-Zoom in



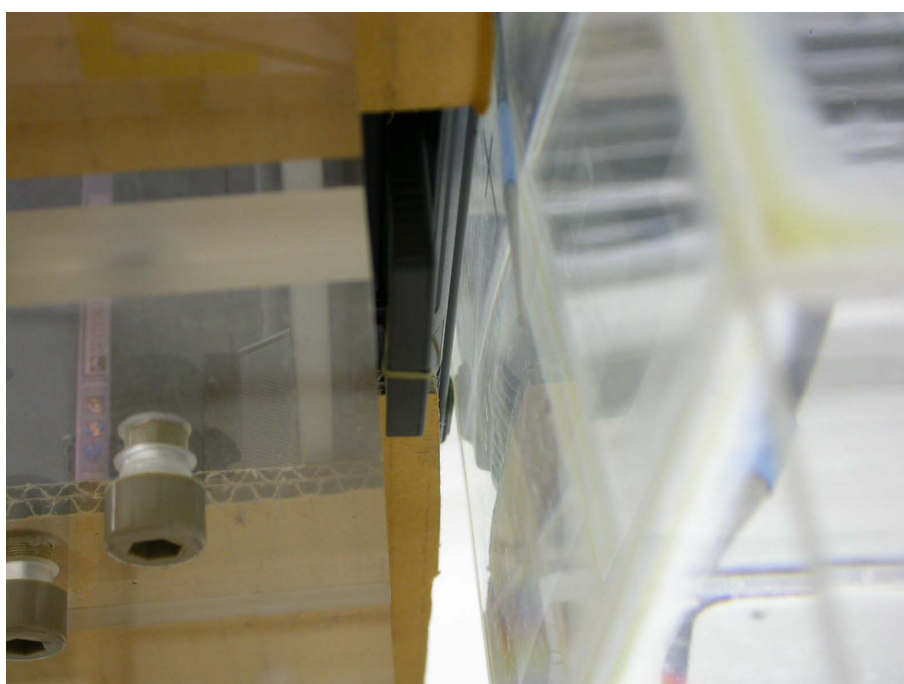
Test Equipment: Notebook (Toshiba)

SAR Measurement Test Setup

Figure 14: EUT bottom to phantom, 0 mm separation



Figure 15: EUT bottom to phantom, 0 mm separation-Zoom in



SAR Measurement Test Setup

Figure 16: EUT perpendicular to phantom, 0 mm separation



Figure 17: EUT perpendicular to phantom, 0 mm separation-Zoom in



SAR Measurement Test Setup

Figure 18: EUT perpendicular to phantom, 15 mm separation



Figure 19: EUT perpendicular to phantom, 15 mm separation-Zoom in



2.3 SAR measurement system

Robot system specification

The SAR measurement system being used is the IndexSAR SARA2 system, which consists of a Mitsubishi RV-E2 6-axis robot arm and controller, IndexSAR probe and amplifier and SAM phantom Head Shape. The robot is used to articulate the probe to programmed positions inside the phantom head to obtain the SAR readings from the DUT.

The system is controlled remotely from a PC, which contains the software to control the robot and data acquisition equipment. The software also displays the data obtained from test scans.

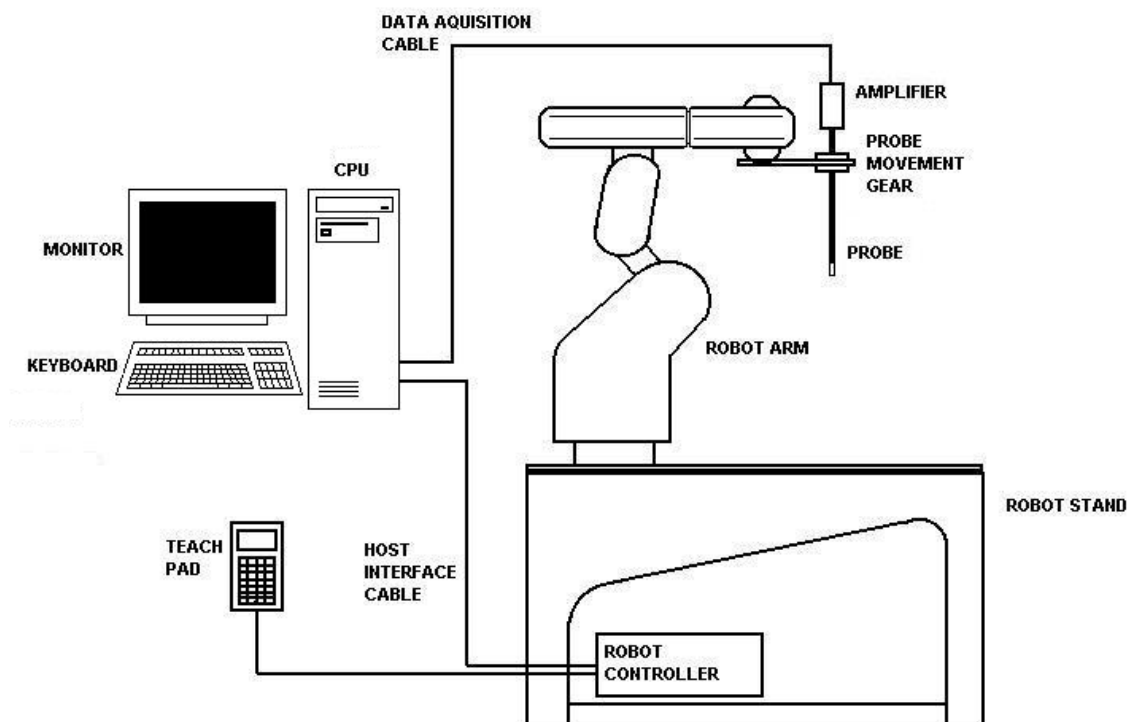


Figure 1: Schematic diagram of the SAR measurement system

The position and digitized shape of the phantom heads are made available to the software for accurate positioning of the probe and reduction of set-up time.

The SAM phantom heads are individually digitized using a Mitutoyo CMM machine to a precision of 0.02mm. The data is then converted into a shape format for the software, providing an accurate description of the phantom shell. In operation, the system first does an area (2D) scan at a fixed depth within the liquid from the inside wall of the phantom. When the maximum SAR point has been found, the system will then carry out a 3D scan central at that point to determine volume averaged SAR level.

The first 2 measurements points in a direction perpendicular to the surface of the phantom during the zoom scan and closest to the phantom surface, were only 3.5mm and the probe is kept at greater than half a diameter from the surface.

The probe presentation angle has a minor effect on SAR results at frequencies within the IEEE1528 range but that the effects become more marked with bigger probes and at higher frequencies. Indexsar have implemented a correction scheme based on the VPM theory.

Implications of this approach are that the +/- 30 degrees to the surface normal criterion does not obviate variations in probe sensitivity with probe presentation angle because the relevance angle is to the local field-gradient direction and not the surface normal. Effects are small at IEEE1528 frequencies and can be assessed or corrected using VPM dependent on frequency of testing.

Boundary effect compensation is a new opportunity that can be corrected for if appropriate measurements have been made during the waveguide probe calibrations. Indexsar have responded to this opportunity by modifying the waveguide measurements for probes calibrated now and by building a correction scheme into the software.

2.4 SAR measurement system validation

Prior to the assessment, the system was verified to the $\pm 10\%$ of the specifications by using the system validation equipments. The validation was performed at 2450 MHz on then bottom side of box phantom.

Procedures

The SAR evaluation was performed with the following procedures:

- a. The SAR distribution was measured at the exposed side of the bottom of the box phantom and was measured at a distance of 15 mm for 300 ~ 1000 MHz and 10 mm for 1000 ~ 3000 MHz from the inner surface of the shell. The feed power was 1/5W.
- b. The dimension for this cube is 32 mm x 32 mm x 34 mm was assessed by measuring 5 x 5 x 7 points. On the basis of this data set, the spatial peak SAR value was evaluated with the following procedure:
 - i) The data at the surface were extrapolated, since the center of the dipoles is 2.7 mm away from the tip of the probe and the distance between the surface and the lowest measurement point is 5 mm. The extrapolation was based on a least square algorithm. A polynomial of the fourth order was calculated through the points in Z-axes. This polynomial was then used to evaluate the points between the surface and the probe tip.
 - ii) The maximum interpolated value was searched with a straightforward algorithm. Around this maximum, the SAR values averaged over the spatial volumes (1g or 10g) were computed using the 3-D spline interpolation algorithm. The 3-D spline is composed of three one-dimensional splines with the “Not a knot” condition (in x, y and z directions). The volume was integrated with the trapezoidal algorithm. 1000 points (10 x 10 x 10) were interpolated to calculate the average.
 - iii) All neighboring volumes were evaluated until no neighboring volume with a higher average value was found.

The test scans procedure for system validation also applies to the general scan procedure except for the set-up position. For general scan, the EUT was placed at the side of phantom. For validation scan, the standard dipole antenna was placed at the bottom of phantom

2.4.1 System Validation result

System Validation (2450 MHz Body)				
Frequency MHz	Operating Mode	Target SAR _{Ig} (W/kg)	Measured SAR _{Ig} (W/kg)	Deviation (±10%)
2450	CW	52.4	49.765	-5.03 %

Please see the plot below:

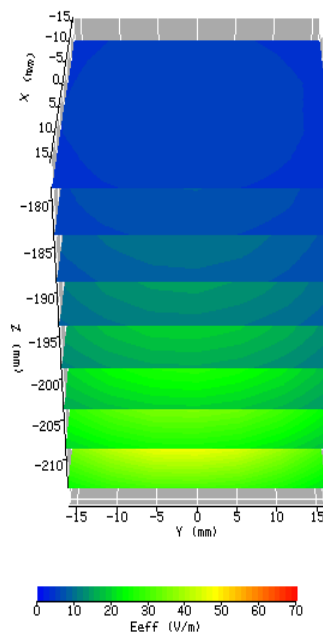
Date:	2006/6/27	Position:	Bottom of the Phantom
Filename:	2450 system validation.txt	Phantom:	HeadBox2-val..csv
Device Tested:	SARA2 system validation	Head Rotation:	0
Antenna:	2450 STD Dipole Antenna	Test Frequency:	2450MHz
Shape File:	none.csv	Power Level:	23dBm /CW

Probe: 0136
Cal File: SN0114_2450_CW_BODY

	X	Y	Z
Cal Factors:			
Air	490	377	387
DCP	20	20	20
Lin	.435	.435	.435

Amp Gain: 2
Averaging: 1
Batteries
Replaced: -

Liquid: 15.5cm
Type: 2450MHz Body
Conductivity: 1.9236
Relative Permittivity: 53.5164
Liquid Temp (deg C): 23
Ambient Temp (deg C): 23
Ambient RH (%): 58
Density (kg/m3): 1000
Software Version: 2.33VPM
Crest Factor = 1



ZOOM SCAN RESULTS:

Spot SAR (W/kg):	Start Scan	End Scan
	0.602	0.603

Change during Scan (%) 0.23

Max E-field (V/m): 63.98

Max SAR (W/kg)	1g	10g
	9.953	4.243

Location of Max (mm):	X	Y	Z
	0.0	-1.2	-220.4

Normalized to an input power of 1W
Averaged over 1 cm³ (1g) of tissue
49.765W/kg

2.4.2 System Performance Check result

System performance check (2450 MHz Head)				
Frequency MHz	Operating Mode	Target SAR _{Ig} (W/kg)	Measured SAR _{Ig} (W/kg)	Deviation (±10%)
2450	CW	52.4	49.765	-5.03 %

Please see the plot below:

Date:	2006/6/27	Position:	Bottom of the phantom
Filename:	2450 per. check.txt	Phantom:	HeadBox2-test.csv
Device Tested:	2450 performance check	Head Rotation:	0
Antenna:	2450 Dipole antenna	Test Frequency:	2450MHz
Shape File:	none.csv	Power Level:	23 dBm

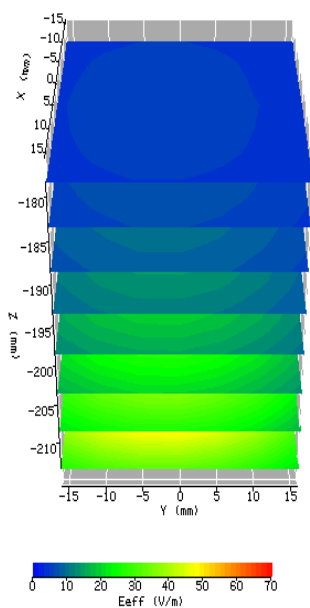
Probe: 0136
Cal File: SN0136_2450_CW_BODY

Cal Factors:

	X	Y	Z
Air	490	377	387
DCP	20	20	20
Lin	.435	.435	.435

Amp Gain: 2
Averaging: 1
Batteries Replaced: -

Liquid: 15.5cm
Type: 2450 MHz Body
Conductivity: 1.9236
Relative Permittivity: 53.5164
Liquid Temp (deg C): 23
Ambient Temp (deg C): 23
Ambient RH (%): 58
Density (kg/m3): 1000
Software Version: 2.33VPM



ZOOM SCAN RESULTS:

Spot SAR (W/kg):	Start Scan	End Scan
	0.602	0.603

Change during Scan (%) 0.23

Max E-field (V/m): 63.98

Max SAR (W/kg)	1g	10g
	9.953	4.243

Location of Max (mm):	X	Y	Z
	0.0	-1.2	-220.4

Normalized to an input power of 1W
Averaged over 1 cm³ (1g) of tissue
49.765W/kg

2.5 Test Result

The results on the following page(s) were obtained when the device was tested in the condition described in this report. Detailed measurement data and plots, which reveal information about the location of the maximum SAR with respect to the device, are reported in Appendix A.

Measurement Results

Trade Name:	ZyXEL	Model No.:	G-120
Serial No.:	Not Labeled	Test Engineer:	Kevin Chen
TEST CONDITIONS			
Ambient Temperature	23 °C	Relative Humidity	50 %
Test Signal Source	Tx Mode	Signal Modulation	DSSS, OFDM
Output Power Before SAR Test	See section 1.5.2	Output Power After SAR Test	See section 1.5.2
Test Duration	23 min. each scan	Number of Battery Change	-

FOR Notebook (DELL)

EUT Position						
Channel (MHz)	Operating Mode	Crest Factor	Description	Distance (mm)	Measured SAR_{1g} (W/kg)	Plot Number
2437	DSSS	1	Bottom to phantom	0	0.181	1
2437	OFDM	1	Bottom to phantom	0	0.142	2
2437	DSSS	1	Perpendicular to phantom	0	0.818	3
2437	OFDM	1	Perpendicular to phantom	0	0.667	4
2437	DSSS	1	Perpendicular to phantom	15	0.128	5
2437	OFDM	1	Perpendicular to phantom	15	0.099	6
2412	DSSS	1	Perpendicular to phantom	0	0.734	7
2462	DSSS	1	Perpendicular to phantom	0	1.043	8

Note: 1. The distance from bottom of EUT to flat phantom is 18 mm.
2. Configuration at middle channel with more than -3dB of applicable limit.

FOR Notebook (HP)

EUT Position						
Channel (MHz)	Operating Mode	Crest Factor	Description	Distance (mm)	Measured SAR _{1g} (W/kg)	Plot Number
2437	DSSS	1	Bottom to phantom	0	0.428	17
2437	OFDM	1	Bottom to phantom	0	0.324	18
2437	DSSS	1	Perpendicular to phantom	0	0.969	19
2437	OFDM	1	Perpendicular to phantom	0	0.795	20
2437	DSSS	1	Perpendicular to phantom	15	0.154	21
2437	OFDM	1	Perpendicular to phantom	15	0.121	22
2412	DSSS	1	Perpendicular to phantom	0	0.806	23
2462	DSSS	1	Perpendicular to phantom	0	1.266	24

Note: 1. The distance from bottom of EUT to flat phantom is 10.5 mm.
2. Configuration at middle channel with more than -3dB of applicable limit.

FOR Notebook (Toshiba)

EUT Position						
Channel (MHz)	Operating Mode	Crest Factor	Description	Distance (mm)	Measured SAR _{1g} (W/kg)	Plot Number
2437	DSSS	1	Bottom to phantom	0	0.313	9
2437	OFDM	1	Bottom to phantom	0	0.263	10
2437	DSSS	1	Perpendicular to phantom	0	0.944	11
2437	OFDM	1	Perpendicular to phantom	0	0.735	12
2437	DSSS	1	Perpendicular to phantom	15	0.101	13
2437	OFDM	1	Perpendicular to phantom	15	0.078	14
2412	DSSS	1	Perpendicular to phantom	0	0.832	15
2462	DSSS	1	Perpendicular to phantom	0	1.163	16

Note: 1. The distance from bottom of EUT to flat phantom is 13 mm.
2. Configuration at middle channel with more than -3dB of applicable limit.

3.0 Test Equipment

3.1 Equipment List

The Specific Absorption Rate (SAR) tests were performed with the INDEXSAR SARA2 SYSTEM.

The following major equipment/components were used for the SAR evaluations:

SAR Measurement System			
EQUIPMENT	SPECIFICATIONS	Intertek ID No.	LAST CAL. DATE
Balanced Validation dipole	2450MHz	EC381-4	05/2005
Controller	Mitsubishi CR-E116	EP320-1	N/A
Robot	Mitsubishi RV-E2	EP320-2	N/A
	Repeatability: ± 0.04 mm; Number of Axes: 6		
E-Field Probe	IXP-050 (S/N 0136)	EC356	03/2006
	Frequency Range: 450MHz ~ 2450MHz Probe outer diameter: 5.2 mm; Length: 350 mm; Distance between the probe tip and the dipole center: 2.7 mm		
Data Acquisition	SARA2	N/A	N/A
	Processor: Pentium 4; Clock speed: 1.5GHz; OS: Windows XP; I/O: two RS232; Software: SARA2 Ver. 2.33VPM (Virtual Probe Minaturisation)		
Phantom	2mm wall thickness box phantom	N/A	N/A
	Shell Material: clear Perspex; Thickness: 2 ± 0.1 mm; Capacity: 152.5 x 225.5 x 200 (W x L x D) mm ³ ; Dielectric constant: less than 2.85 above 500MHz;		
Device holder	Material: clear Perspex; Dielectric constant: less than 2.85 above 500MHz	N/A	N/A
Simulated Tissue	Mixture	N/A	06/27/2006
	Please see section 3.2 for details		
Wideband Peak Power Meter/ Sensor	Anritsu ML2487A with MA2491A power sensor	EC396	10/18/2005
	Frequency Range: 100MHz~18GHz		
RF Power Meter	Boonton 4231A with 51011-EMC power sensor	EC359	03/22/2006
	Frequency Range: 0.03 to 8 GHz, <24dBm		
Vector Network Analyzer	HP 8753B HP 85046A	EC375	08/19/2005
	Frequency Range: 300k to 3GHz		
Signal Generator	R&S SMR27	EC354	08/15/2005
	Frequency Range: 10M to 27GHz, <120dBuV		

3.2 Tissue Simulating Liquid

The head and body tissue parameters should be used to test operating frequency band of transmitters. When a transmission band overlaps with one of the target frequencies, the tissue dielectric parameters of the tissue medium at the middle of a device transmission band should be within $\pm 5\%$ of the parameters specified at that target frequency.

3.2.1 Body Tissue Simulating Liquid

Body Ingredients Frequency (2.45 GHz)	
DGBE (Dilethylene Glycol Butyl Ether)	26.7%
Salt	0.04%
Water	73.2%

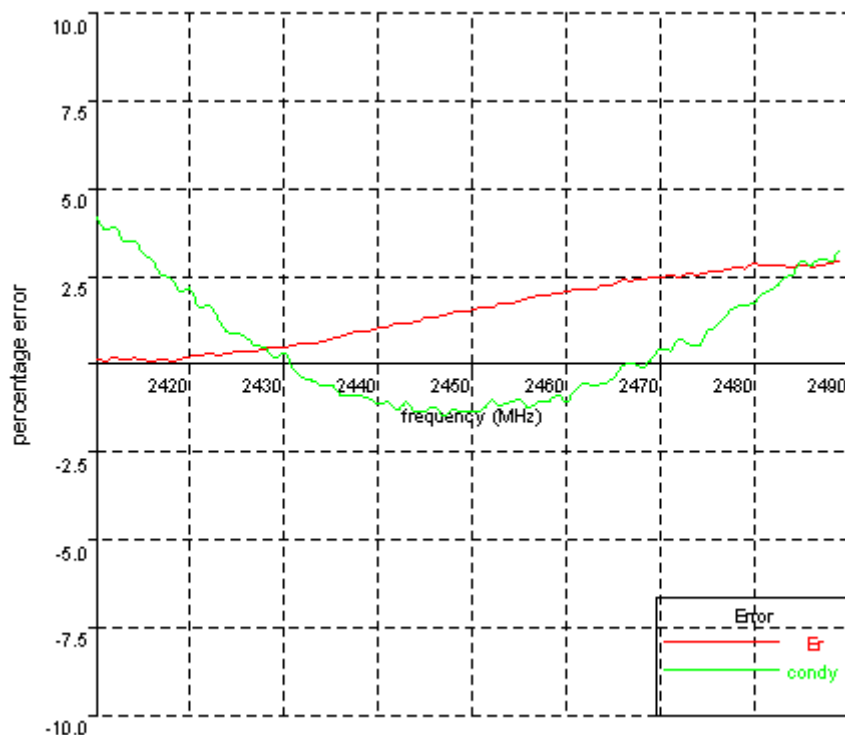
The dielectric parameters were verified prior to assessment using the HP 85046A dielectric probe kit and the HP 8753B network Analyzer. The dielectric parameters were:

Frequency (MHz)	Temp. ()	ϵ_r / Relative Permittivity			σ / Conductivity (mho/m)			ρ *(kg/m ³)
		measured	target	($\pm 5\%$)	measured	target	($\pm 5\%$)	
2450	23.2	53.52	52.7	1.56%	1.92	1.95	-1.54%	1000

* Worst-case assumption

3.2.2 Body Liquid result

Date: 27 Jun. 2006	Temperature: 23.5	Type: 2450 MHz/ body	Tested by: Kevin
2410, 52.8239438121, -1.9920525582		2450, 53.5164113554, -1.9236237738	
2411, 52.8012028368, -1.9864422133		2451, 53.5503435574, -1.9257648762	
2412, 52.8500693353, -1.9883480255		2452, 53.5413000373, -1.9329127764	
2413, 52.8114857406, -1.981342507		2453, 53.6236376993, -1.9312611466	
2414, 52.837945371, -1.982966395		2454, 53.5954074927, -1.9345368353	
2415, 52.8151983679, -1.9766034682		2455, 53.6462018353, -1.9370463605	
2416, 52.7930384367, -1.9736408662		2456, 53.6817622192, -1.9340065465	
2417, 52.8244561493, -1.9672402515		2457, 53.7133369262, -1.938695529	
2418, 52.7745081565, -1.9663604985		2458, 53.7364618571, -1.940505813	
2419, 52.8262766598, -1.9600280811		2459, 53.7429908372, -1.9456458441	
2420, 52.8601374772, -1.963021746		2460, 53.7917877975, -1.9428568832	
2421, 52.875120725, -1.9535006812		2461, 53.7995196525, -1.9520111334	
2422, 52.892787953, -1.9555347591		2462, 53.8030751587, -1.9559299888	
2423, 52.8719445222, -1.9488959536		2463, 53.8070624853, -1.9565794033	
2424, 52.8999577405, -1.9427746194		2464, 53.864660072, -1.9591510264	
2425, 52.9149522754, -1.9430249946		2465, 53.8813027774, -1.9634370085	
2426, 52.9238891429, -1.941103014		2466, 53.9434877164, -1.9716407525	
2427, 52.9335991804, -1.9383524786		2467, 53.9355573603, -1.97461501	
2428, 52.9669207115, -1.9379415738		2468, 53.9554345137, -1.9736195096	
2429, 52.9834598518, -1.9336385496		2469, 53.9726954574, -1.9791589215	
2430, 52.9756706315, -1.9372320205		2470, 53.9804336662, -1.9869897774	
2431, 53.0163814746, -1.9292103555		2471, 53.9972892801, -1.9875396694	
2432, 53.0364998271, -1.9252160775		2472, 53.9818013036, -1.9957684074	
2433, 53.0447031635, -1.9247789661		2473, 54.0345768253, -1.9941887801	
2434, 53.0581528114, -1.9231130706		2474, 54.0126928217, -1.9943567883	
2435, 53.1039208701, -1.9242281048		2475, 54.0479051271, -2.0039195573	
2436, 53.1395755966, -1.9199322631		2476, 54.0530927261, -2.0088090627	
2437, 53.1694941554, -1.9206784065		2477, 54.0850093926, -2.0160428145	
2438, 53.2222320941, -1.9214455276		2478, 54.110134626, -2.022474002	
2439, 53.2228140793, -1.9202947455		2479, 54.1021797707, -2.024700298	
2440, 53.2555043527, -1.9189111257		2480, 54.1777848277, -2.0273561451	
2441, 53.2776554168, -1.9203326959		2481, 54.1341003803, -2.0348424927	
2442, 53.3248440928, -1.916835699		2482, 54.1514184812, -2.0380888496	
2443, 53.3257964612, -1.9225239618		2483, 54.1334986736, -2.045449388	
2444, 53.3460322287, -1.9176933704		2484, 54.1141387052, -2.0491874915	
2445, 53.3977774505, -1.9196304213		2485, 54.1491802924, -2.0586468537	
2446, 53.4130883139, -1.9227744617		2486, 54.1170162301, -2.0575212031	
2447, 53.4400246688, -1.91869371		2487, 54.1337369068, -2.0627972862	
2448, 53.4853618014, -1.9229386584		2488, 54.1684357857, -2.0622282583	
2449, 53.4855372601, -1.9222937456		2489, 54.1989336117, -2.0703512023	
		2490, 54.1548571069, -2.0897647394	



3.3 E-Field Probe and 2450 Balanced Dipole Antenna Calibration

Probe calibration factors and dipole antenna calibration are included in Appendix C.

4.0 Measurement Uncertainty

The uncertainty budget has been determined for the INDEXSAR SARA2 measurement system according to IEEE P1528 documents [3] and is given in the following table. The extended uncertainty (95% confidence level) was assessed to be 20.6 % for SAR measurement, and the extended uncertainty (95% confidence level) was assessed to be 20.2 % for system performance check.

Table 1 Exposure Assessment Uncertainty
Example of measurement uncertainty assessment SAR measurement

a	b			c	d	e		f	g	h	i
Uncertainty Component	Sec.	Tol. (+/-)			Prob. Dist.	Divisor (descrip)	Divisor (value)	c1 (1g)	c1 (10g)	Standard Uncertainty (%) 1g	Standard Uncertainty (%) 10g
		(dB)		(%)							
Measurement System											
Probe Calibration	E2.1			2.5	N	1 or k	1	1	1	2.50	2.50
Axial Isotropy	E2.2	0.25	5.93	5.93	R	$\sqrt{3}$	1.73	0	0	0.00	0.00
Hemispherical Isotropy	E2.2	0.45	10.92	10.92	R	$\sqrt{3}$	1.73	1	1	6.30	6.30
Boundary effect	E2.3		4	4.00	R	$\sqrt{3}$	1.73	1	1	2.31	2.31
Linearity	E2.4	0.04	0.93	0.93	R	$\sqrt{3}$	1.73	1	1	0.53	0.53
System Detection Limits	E2.5		1	1.00	R	$\sqrt{3}$	1.73	1	1	0.58	0.58
Readout Electronics	E2.6		1	1.00	N	1 or k	1.00	1	1	1.00	1.00
Response time	E2.7		0	0.00	R	$\sqrt{3}$	1.73	1	1	0.00	0.00
Integration time	E2.8		1.4	1.40	R	$\sqrt{3}$	1.73	1	1	0.81	0.81
RF Ambient Conditions	E6.1		3	3.00	R	$\sqrt{3}$	1.73	1	1	1.73	1.73
Probe Positioner Mechanical Tolerance	E6.2		0.6	0.60	R	$\sqrt{3}$	1.73	1	1	0.35	0.35
Probe Position wrt. Phantom Shell	E6.3		3	3.00	R	$\sqrt{3}$	1.73	1	1	1.73	1.73
SAR Evaluation Algorithms	E5		8	8.00	R	$\sqrt{3}$	1.73	1	1	4.62	4.62
Test Sample Related											
Test Sample Positioning	E4.2		2	2.00	N	1	1.00	1	1	2.00	2.00
Device Holder Uncertainty	E4.1		2	2.00	N	1	1.00	1	1	2.00	2.00
Output Power Variation	6.6.2		5	5.00	R	$\sqrt{3}$	1.73	1	1	2.89	2.89
Phantom and Tissue Parameters											
Phantom Uncertainty (shape and thickness)	E3.1		4	4.00	R	$\sqrt{3}$	1.73	1	1	2.31	2.31
Liquid conductivity (Deviation from target)	E3.2		5	5.00	R	$\sqrt{3}$	1.73	0.64	0.43	1.85	1.24
Liquid conductivity (measurement uncert.)	E3.3		1.1	1.10	N	1	1.00	0.64	0.43	0.70	0.47
Liquid permittivity (Deviation from target)	E3.2		5	5.00	R	$\sqrt{3}$	1.73	0.6	0.49	1.73	1.41
Liquid permittivity (measurement uncert.)	E3.3		1.1	1.10	N	1	1.00	0.6	0.49	0.66	0.54
Combined standard uncertainty					RSS					10.5	10.3
Expanded uncertainty	(95% Confidence Level)				k=2					20.6	20.3

Table 2 System Check (Verification)

Example of measurement uncertainty assessment for system performance check

a	b			c	d	e		f	g	h	i
Uncertainty Component	Sec.	Tol. (+/-)			Prob. Dist.	Divisor (descrip)	Divisor (value)	c1 (1g)	c1 (10g)	Standard Uncertainty (%) 1g	Standard Uncertainty (%) 10g
		(dB)		(%)							
Measurement System											
Probe Calibration	E2.1			2.5	N	1 or k	1	1	1	2.50	2.50
Axial Isotropy	E2.2	0.25	5.93	5.93	R	$\sqrt{3}$	1.73	0	0	0.00	0.00
Hemispherical Isotropy	E2.2	0.45	10.92	10.92	R	$\sqrt{3}$	1.73	1	1	6.30	6.30
Boundary effect	E2.3		4	4.00	R	$\sqrt{3}$	1.73	1	1	2.31	2.31
Linearity	E2.4	0.04	0.93	0.93	R	$\sqrt{3}$	1.73	1	1	0.53	0.53
System Detection Limits	E2.5		1	1.00	R	$\sqrt{3}$	1.73	1	1	0.58	0.58
Readout Electronics	E2.6		1	1.00	N	1 or k	1.00	1	1	1.00	1.00
Response time	E2.7		0	0.00	R	$\sqrt{3}$	1.73	1	1	0.00	0.00
Integration time	E2.8		1.4	1.40	R	$\sqrt{3}$	1.73	1	1	0.81	0.81
RF Ambient Conditions	E6.1		3	3.00	R	$\sqrt{3}$	1.73	1	1	1.73	1.73
Probe Positioner Mechanical Tolerance	E6.2		0.6	0.60	R	$\sqrt{3}$	1.73	1	1	0.35	0.35
Probe Position wrt. Phantom Shell	E6.3		3	3.00	R	$\sqrt{3}$	1.73	1	1	1.73	1.73
SAR Evaluation Algorithms	E5		8	8.00	R	$\sqrt{3}$	1.73	1	1	4.62	4.62
Dipole											
Dipole axis to liquid distance	8, E4.2		2	2.00	N	1	1.00	1	1	2.00	2.00
Input power and SAR drift measurement	8, 6.6.2		5	5.00	R	$\sqrt{3}$	1.73	1	1	2.89	2.89
Phantom and Tissue Parameters											
Phantom Uncertainty (thickness)	E3.1		4	4.00	R	$\sqrt{3}$	1.73	1	1	2.31	2.31
Liquid conductivity (Deviation from target)	E3.2		5	5.00	R	$\sqrt{3}$	1.73	0.64	0.43	1.85	1.24
Liquid conductivity (measurement uncert.)	E3.3		1.1	1.10	N	1	1.00	0.64	0.43	0.70	0.47
Liquid permittivity (Deviation from target)	E3.2		5	5.00	R	$\sqrt{3}$	1.73	0.6	0.49	1.73	1.41
Liquid permittivity (measurement uncert.)	E3.3		1.1	1.10	N	1	1.00	0.6	0.49	0.66	0.54
Combined standard uncertainty					RSS					10.3	10.1
Expanded uncertainty	(95% Confidence Level)				k=2					20.2	19.9

5.0 WARNING LABEL INFORMATION - USA

See user manual.

6.0 REFERENCES

- [1] ANSI, *ANSI/IEEE C95.1-1999: IEEE Standard for Safety Levels with Respect to Human Exposure to Radio Frequency Electromagnetic Fields, 3kHz to 300 GHz*, The Institute of electrical and Electronics Engineers, Inc., New York, NY 10017, 1999
- [2] Federal Communications Commission, "Evaluating Compliance with FCC Guidelines for Human Exposure to Radiofrequency Electromagnetic Fields", Supplement C to OET Bulletin 65, Washington, D.C. 20554, 1997
- [3] IEEE Standards Coordinating Committee 34, "IEEE Recommended Practice for Determining the Peak Spatial-Average Specific Absorption Rate (SAR) in the Human Head from Wireless Communications Devices: Measurement Techniques", IEEE Std 1528TM-2003
- [4] Industry Canada, "Evaluation Procedure for Mobile and Portable Radio Transmitters with respect to Health Canada's Safety Code 6 for Exposure of Humans to Radio Frequency Fields", Radio Standards Specification RSS-102 Issue 1 (Provisional): September 1999.
- [5] IEC 62209-1 Human exposure to radio frequency fields from hand-held and body-mounted wireless communication devices – Human models, instrumentation, and procedures – Part 1: Procedure to determine the specific absorption rate (SAR) for hand-held devices used in close proximity to the ear (frequency range of 300MHz to 3GHz)

7.0 Document Revision Record

Revision/ Job Number	Writer Initials	Date	Change
TC0600912	Y.Y.	Jun. 30, 2006	Original document

APPENDIX A - SAR Evaluation Data

Power drift: Power drift is the measurement of power drift of the device over one complete SAR scan.

To assess the drift of the power of the device under test, a SAR measurement was made in the middle of the zoom scan volume at the start of the scan and a measurement at this point was then also made after the measurement scan. The difference between the two measurements should be less than 5%.

Plot #1 (1/2)

Date:	2006/6/28	Position:	Bot. 0mm to phantom
Filename:	G120_DellC_bot0_11b-6.txt	Phantom:	HeadBox2-test.csv
Device Tested:	G-120	Head Rotation:	0
Antenna:	PCB printed	Test Frequency:	11b_2437MHz
Shape File:	G-120_DellC-bot.csv	Power Level:	20.62 dBm

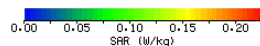
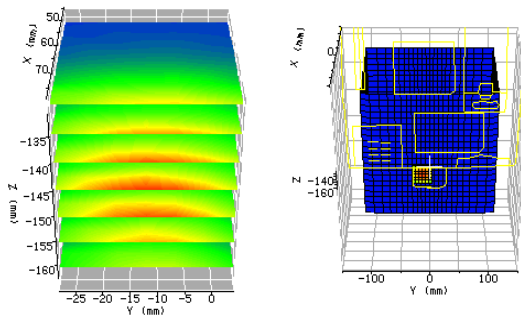
Probe: 0136
Cal File: SN0136_2450_CW_BODY

Cal Factors:

	X	Y	Z
Air	490	377	387
DCP	20	20	20
Lin	.435	.435	.435

Amp Gain: 2
Averaging: 1
Batteries Replaced: -

Liquid: 15.5cm
Type: 2450 MHz Body
Conductivity: 1.9236
Relative Permittivity: 53.516
Liquid Temp (deg C): 23
Ambient Temp (deg C): 22
Ambient RH (%): 56
Density (kg/m3): 1000
Software Version: 2.33VPM



ZOOM SCAN RESULTS:

Spot SAR (W/kg):

Start Scan	End Scan
0.057	0.058

Change during Scan (%): 2.64

Max E-field (V/m): 10.56**Max SAR (W/kg)**

1g	10g
0.181	0.110

Location of Max (mm):

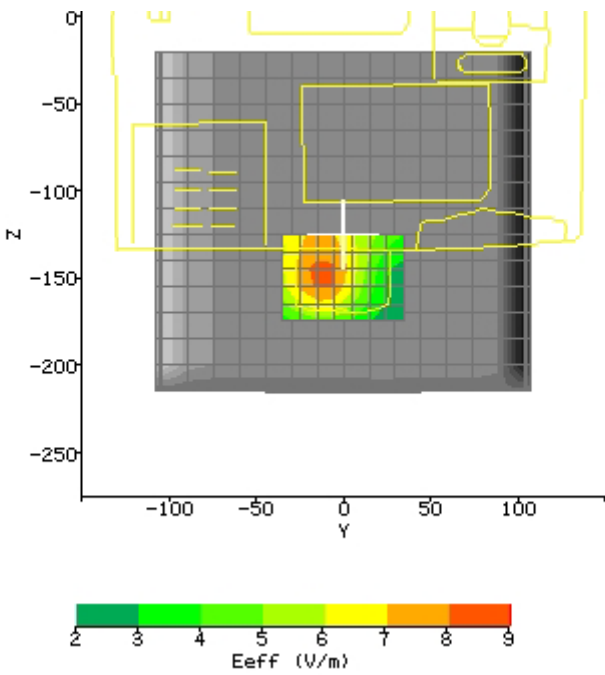
X	Y	Z
78.0	-28.0	-147.0

Plot #1 (2/2)

AREA SCAN:

Scan Extent:

	Min	Max	Steps
Y	-35.0	35.0	7.0
Z	-175.0	-125.0	5.0



Plot #2 (1/2)

Date:	2006/6/28	Position:	Bot. 0mm to phantom
Filename:	G120_DellC_bot0_11g-6.txt	Phantom:	HeadBox2-test.csv
Device Tested:	G-120	Head Rotation:	0
Antenna:	PCB printed	Test Frequency:	11g_2437MHz
Shape File:	G-120_DellC-bot.csv	Power Level:	24.62 dBm

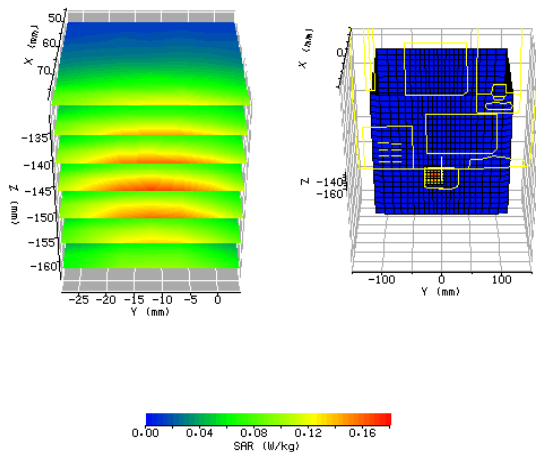
Probe: 0136
Cal File: SN0136_2450_CW_BODY

Cal Factors:

	X	Y	Z
Air	490	377	387
DCP	20	20	20
Lin	.435	.435	.435

Amp Gain: 2
Averaging: 1
Batteries Replaced: -

Liquid: 15.5cm
Type: 2450 MHz Body
Conductivity: 1.9236
Relative Permittivity: 53.516
Liquid Temp (deg C): 23
Ambient Temp (deg C): 22
Ambient RH (%): 56
Density (kg/m3): 1000
Software Version: 2.33VPM

**ZOOM SCAN RESULTS:**

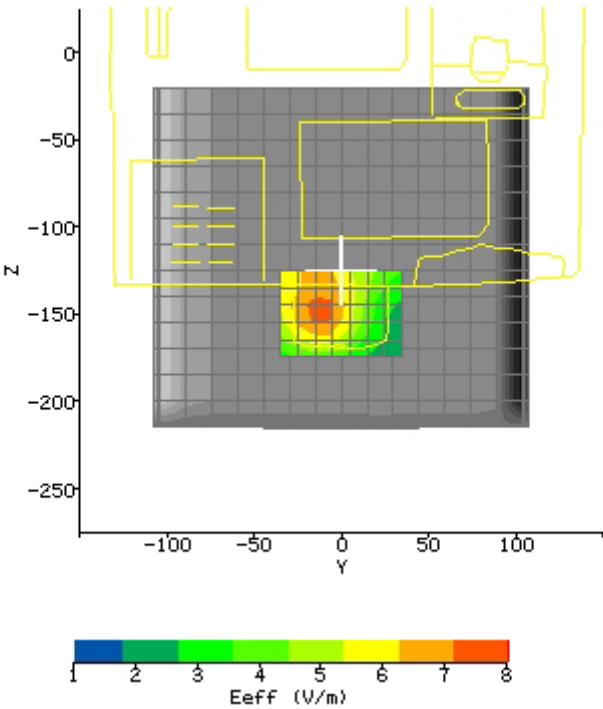
Spot SAR (W/kg):	Start Scan	End Scan
	0.046	0.046
Change during Scan (%)	0	
Max E-field (V/m):	9.37	
Max SAR (W/kg)	1g	10g
	0.142	0.087
Location of Max (mm):	X	Y
	78.0	-28.0
		Z
		-147.1

Plot #2 (2/2)

AREA SCAN:

Scan Extent:

	Min	Max	Steps
Y	-35.0	35.0	7.0
Z	-175.0	-125.0	5.0



Plot #3 (1/2)

Date:	2006/6/28	Position:	Per. 0mm to phantom
Filename:	G120_DellC_per0_11b-6.txt	Phantom:	HeadBox2-test.csv
Device Tested:	G-120	Head Rotation:	0
Antenna:	PCB printed	Test Frequency:	11b_2437MHz
Shape File:	G-120_DellC-per.csv	Power Level:	20.62 dBm

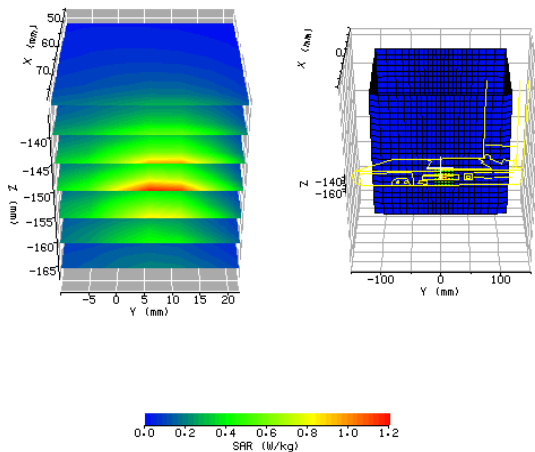
Probe: 0136
Cal File: SN0136_2450_CW_BODY

Cal Factors:

	X	Y	Z
Air	490	377	387
DCP	20	20	20
Lin	.435	.435	.435

Amp Gain: 2
Averaging: 1
Batteries Replaced: -

Liquid: 15.5cm
Type: 2450 MHz Body
Conductivity: 1.9236
Relative Permittivity: 53.516
Liquid Temp (deg C): 23
Ambient Temp (deg C): 22
Ambient RH (%): 56
Density (kg/m3): 1000
Software Version: 2.33VPM

**ZOOM SCAN RESULTS:****Spot SAR (W/kg):**

Start Scan	End Scan
0.206	0.201

Change during Scan (%): -2.48

Max E-field (V/m): 24.70**Max SAR (W/kg)**

1g	10g
0.818	0.365

Location of Max (mm):

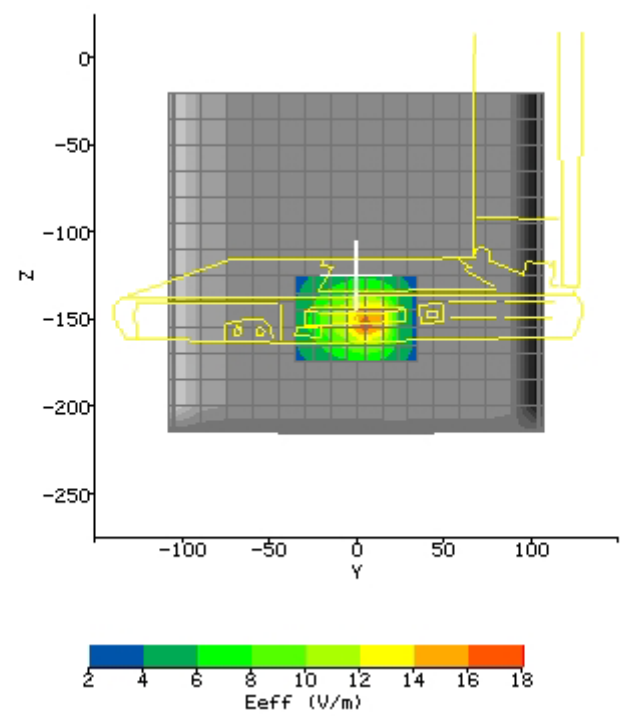
X	Y	Z
78.1	-10.0	-151.1

Plot #3 (2/2)

AREA SCAN:

Scan Extent:

	Min	Max	Steps
Y	-35.0	35.0	7.0
Z	-175.0	-125.0	5.0



Plot #4 (1/2)

Date:	2006/6/28	Position:	Per. 0mm to phantom
Filename:	G120_DellC_per0_11g-6.txt	Phantom:	HeadBox2-test.csv
Device Tested:	G-120	Head Rotation:	0
Antenna:	PCB printed	Test Frequency:	11g_2437MHz
Shape File:	G-120_DellC-per.csv	Power Level:	24.62 dBm

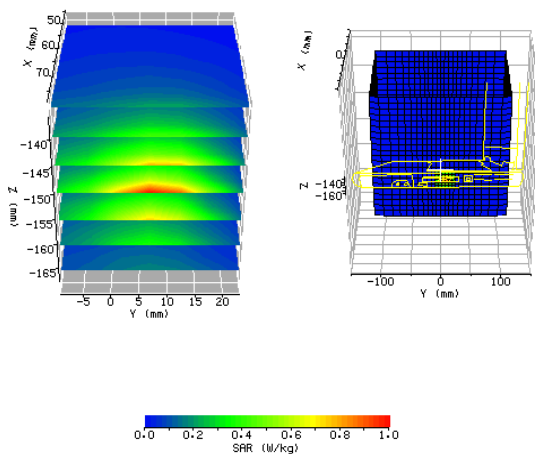
Probe: 0136
Cal File: SN0136_2450_CW_BODY

Cal Factors:

	X	Y	Z
Air	490	377	387
DCP	20	20	20
Lin	.435	.435	.435

Amp Gain: 2
Averaging: 1
Batteries Replaced: -

Liquid: 15.5cm
Type: 2450 MHz Body
Conductivity: 1.9236
Relative Permittivity: 53.516
Liquid Temp (deg C): 23
Ambient Temp (deg C): 22
Ambient RH (%): 56
Density (kg/m3): 1000
Software Version: 2.33VPM

**ZOOM SCAN RESULTS:**

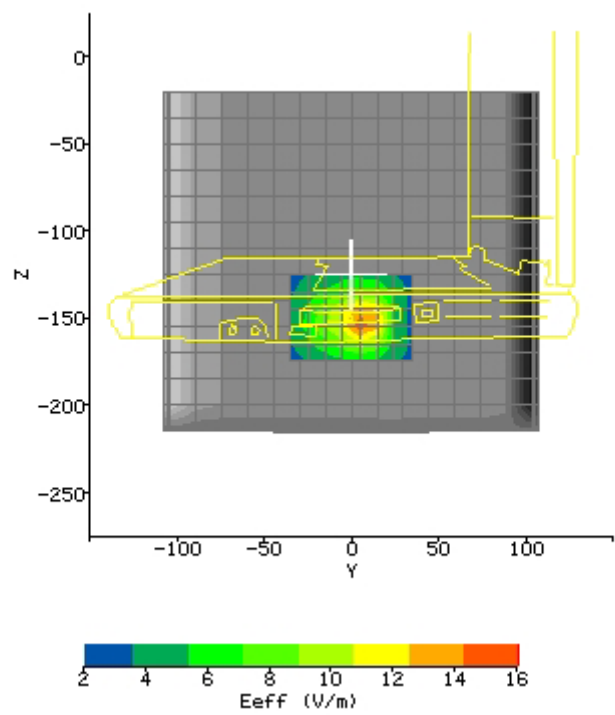
Spot SAR (W/kg):	Start Scan	End Scan
	0.162	0.163
Change during Scan (%)	0.93	
Max E-field (V/m):	22.73	
Max SAR (W/kg)	1g	10g
	0.667	0.296
Location of Max (mm):	X	Y
	78.1	-9.0
		Z
		-151.1

Plot #4 (2/2)

AREA SCAN:

Scan Extent:

	Min	Max	Steps
Y	-35.0	35.0	7.0
Z	-175.0	-125.0	5.0



Plot #5 (1/2)

Date:	2006/6/28	Position:	Per. 15mm to phantom
Filename:	G120_DellC_per15_11b-6.txt	Phantom:	HeadBox2-test.csv
Device Tested:	G-120	Head Rotation:	0
Antenna:	PCB printed	Test Frequency:	11b_2437MHz
Shape File:	G-120_DellC-per.csv	Power Level:	20.62 dBm

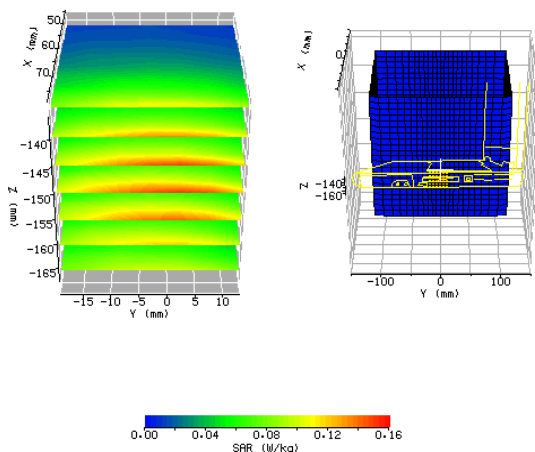
Probe: 0136
Cal File: SN0136_2450_CW_BODY

Cal Factors:

	X	Y	Z
Air	490	377	387
DCP	20	20	20
Lin	.435	.435	.435

Amp Gain: 2
Averaging: 1
Batteries Replaced: -

Liquid: 15.5cm
Type: 2450 MHz Body
Conductivity: 1.9236
Relative Permittivity: 53.516
Liquid Temp (deg C): 23
Ambient Temp (deg C): 22
Ambient RH (%): 56
Density (kg/m3): 1000
Software Version: 2.33VPM

**ZOOM SCAN RESULTS:**

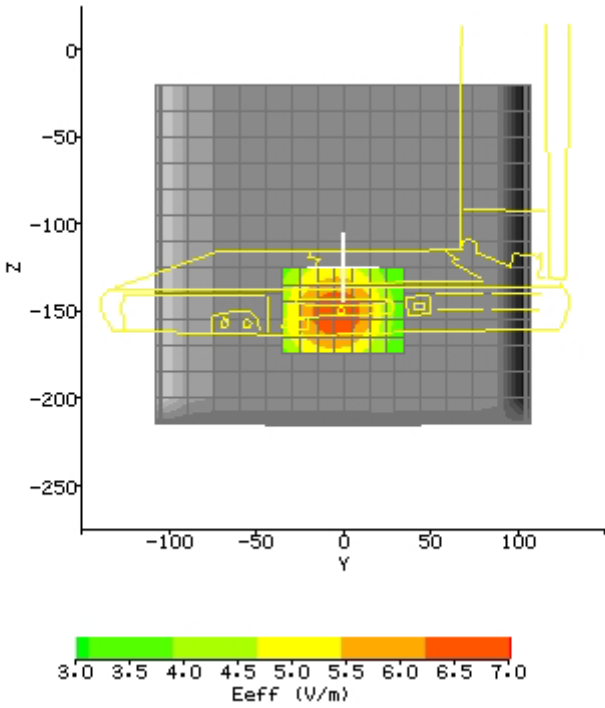
Spot SAR (W/kg):	Start Scan	End Scan
	0.042	0.042
Change during Scan (%)	0	
Max SAR (W/kg)	1g	10g
	0.128	0.079
Location of Max (mm):	X	Y
	78.1	-19.0
		Z
		-150.2

Plot #5 (2/2)

AREA SCAN:

Scan Extent:

	Min	Max	Steps
Y	-35.0	35.0	7.0
Z	-175.0	-125.0	5.0



Plot #6 (1/2)

Date:	2006/6/28	Position:	Per. 15mm to phantom
Filename:	G120_DellC_per15_11g-6.txt	Phantom:	HeadBox2-test.csv
Device Tested:	G-120	Head Rotation:	0
Antenna:	PCB printed	Test Frequency:	11g_2437MHz
Shape File:	G-120_DellC-per.csv	Power Level:	24.62 dBm

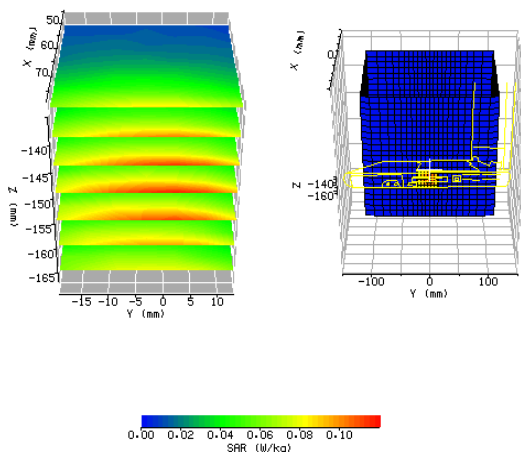
Probe: 0136
Cal File: SN0136_2450_CW_BODY

Cal Factors:

	X	Y	Z
Air	490	377	387
DCP	20	20	20
Lin	.435	.435	.435

Amp Gain: 2
Averaging: 1
Batteries Replaced: -

Liquid: 15.5cm
Type: 2450 MHz Body
Conductivity: 1.9236
Relative Permittivity: 53.516
Liquid Temp (deg C): 23
Ambient Temp (deg C): 22
Ambient RH (%): 56
Density (kg/m3): 1000
Software Version: 2.33VPM

**ZOOM SCAN RESULTS:**

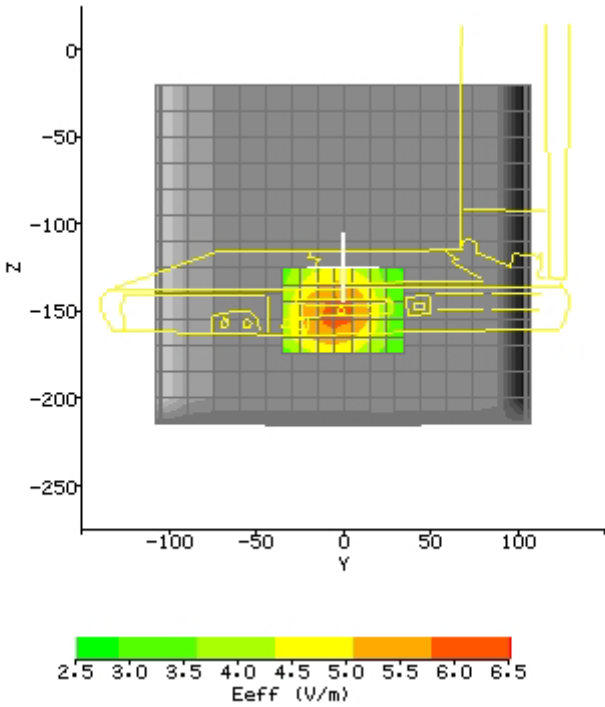
Spot SAR (W/kg):	Start Scan	End Scan
	0.035	0.034
Change during Scan (%)	-3.43	
Max E-field (V/m): 7.84	1g	10g
	0.099	0.062
Location of Max (mm):	X	Y
	78.1	-19.0
		Z
		-150.1

Plot #6 (2/2)

AREA SCAN:

Scan Extent:

	Min	Max	Steps
Y	-35.0	35.0	7.0
Z	-175.0	-125.0	5.0



Plot #7 (1/2)

Date:	2006/6/28	Position:	Per. 0mm to phantom
Filename:	G120_DellC_per0_11b-1.txt	Phantom:	HeadBox2-test.csv
Device Tested:	G-120	Head Rotation:	0
Antenna:	PCB printed	Test Frequency:	11b_2412MHz
Shape File:	G-120_DellC-per.csv	Power Level:	20.49 dBm

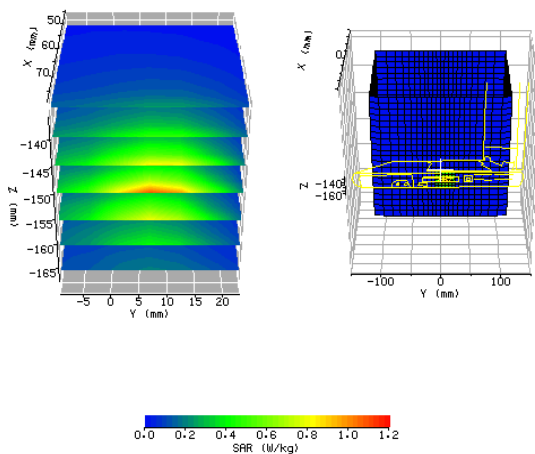
Probe: 0136
Cal File: SN0136_2450_CW_BODY

Cal Factors:

	X	Y	Z
Air	490	377	387
DCP	20	20	20
Lin	.435	.435	.435

Amp Gain: 2
Averaging: 1
Batteries Replaced: -

Liquid: 15.5cm
Type: 2450 MHz Body
Conductivity: 1.9236
Relative Permittivity: 53.516
Liquid Temp (deg C): 23
Ambient Temp (deg C): 22
Ambient RH (%): 56
Density (kg/m3): 1000
Software Version: 2.33VPM

**ZOOM SCAN RESULTS:**

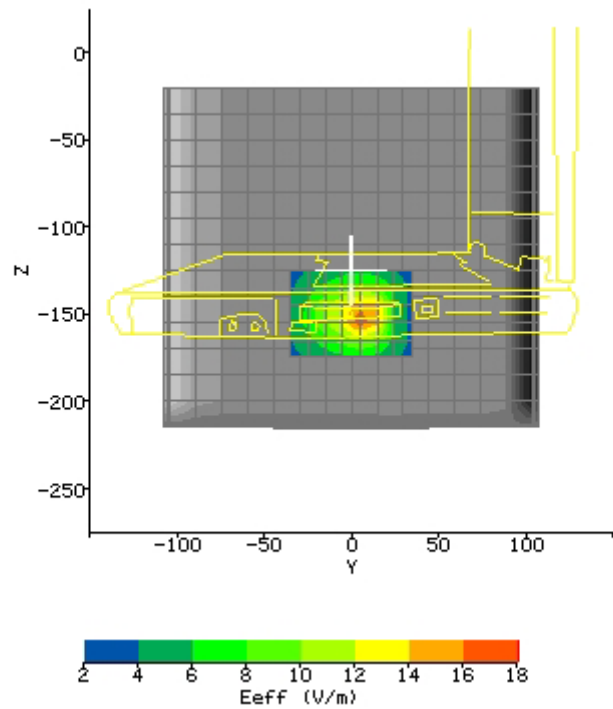
Spot SAR (W/kg):	Start Scan	End Scan
	0.185	0.184
Change during Scan (%)	-0.64	
Max E-field (V/m):	23.73	
Max SAR (W/kg)	1g	10g
	0.734	0.330
Location of Max (mm):	X	Y
	78.1	-9.0
		Z
		-151.1

Plot #7 (2/2)

AREA SCAN:

Scan Extent:

	Min	Max	Steps
Y	-35.0	35.0	7.0
Z	-175.0	-125.0	5.0



Plot #8 (1/2)

Date:	2006/6/28	Position:	Per. 0mm to phantom
Filename:	G120_DellC_per0_11b-11.txt	Phantom:	HeadBox2-test.csv
Device Tested:	G-120	Head Rotation:	0
Antenna:	PCB printed	Test Frequency:	11b_2462MHz
Shape File:	G-120_DellC-per.csv	Power Level:	20.66 dBm

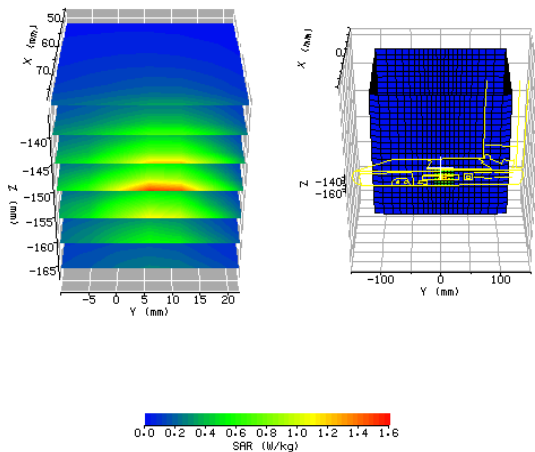
Probe: 0136
Cal File: SN0136_2450_CW_BODY

Cal Factors:

	X	Y	Z
Air	490	377	387
DCP	20	20	20
Lin	.435	.435	.435

Amp Gain: 2
Averaging: 1
Batteries Replaced: -

Liquid: 15.5cm
Type: 2450 MHz Body
Conductivity: 1.9236
Relative Permittivity: 53.516
Liquid Temp (deg C): 23
Ambient Temp (deg C): 22
Ambient RH (%): 56
Density (kg/m3): 1000
Software Version: 2.33VPM

**ZOOM SCAN RESULTS:**

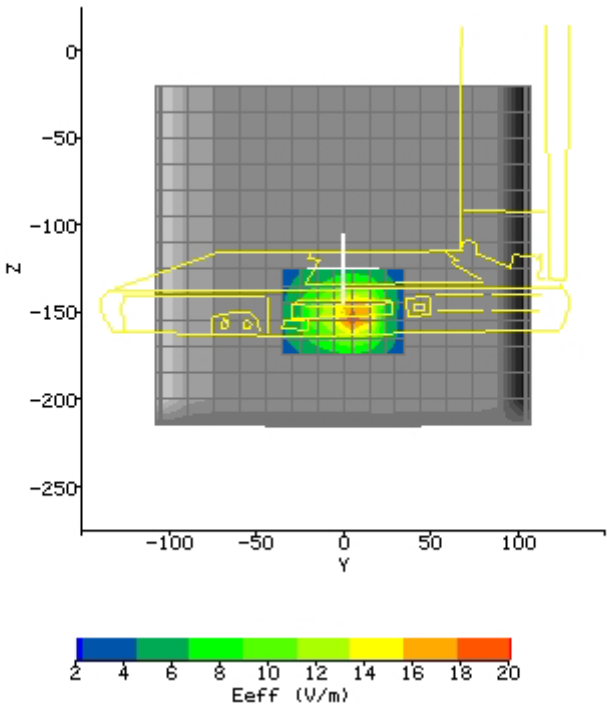
Spot SAR (W/kg):	Start Scan	End Scan	
	0.245	0.247	
Change during Scan (%)	1.01		
Max E-field (V/m):	27.97		
Max SAR (W/kg)	1g	10g	
	1.043	0.460	
Location of Max (mm):	X	Y	Z
	78.1	-10.0	-151.1

Plot #8 (2/2)

AREA SCAN:

Scan Extent:

	Min	Max	Steps
Y	-35.0	35.0	7.0
Z	-175.0	-125.0	5.0



Plot #9 (1/2)

Date:	2006/6/28	Position:	Bot. 0mm to phantom
Filename:	G120_Toshiba_bot0_11b-6.txt	Phantom:	HeadBox2-test.csv
Device Tested:	G-120	Head Rotation:	0
Antenna:	PCB printed	Test Frequency:	11b_2437MHz
Shape File:	G-120_Toshiba-bot.csv	Power Level:	20.62 dBm

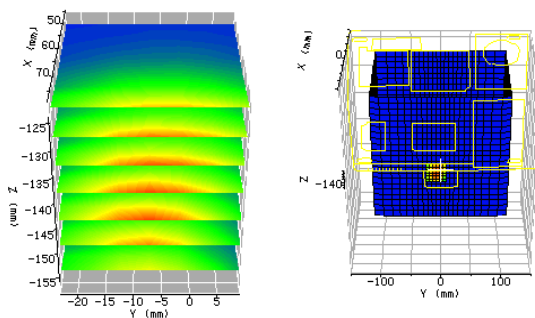
Probe: 0136
Cal File: SN0136_2450_CW_BODY

Cal Factors:

	X	Y	Z
Air	490	377	387
DCP	20	20	20
Lin	.435	.435	.435

Amp Gain: 2
Averaging: 1
Batteries Replaced: -

Liquid: 15.5cm
Type: 2450 MHz Body
Conductivity: 1.9236
Relative Permittivity: 53.516
Liquid Temp (deg C): 23
Ambient Temp (deg C): 22
Ambient RH (%): 56
Density (kg/m3): 1000
Software Version: 2.33VPM

**ZOOM SCAN RESULTS:**

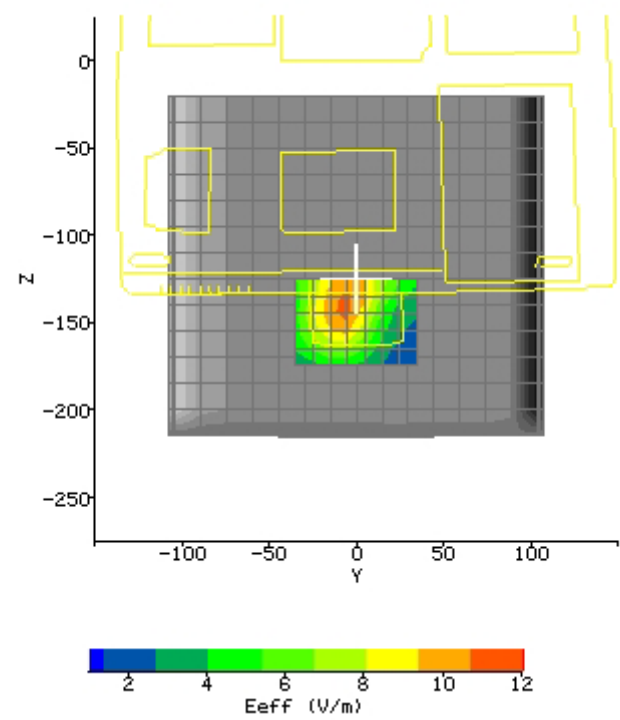
Spot SAR (W/kg):	Start Scan	End Scan
	0.097	0.100
Change during Scan (%)	2.49	
Max E-field (V/m):	13.88	
Max SAR (W/kg)	1g	10g
	0.313	0.188
Location of Max (mm):	X	Y
	78.1	-23.0
		Z
		-139.1

Plot #9 (2/2)

AREA SCAN:

Scan Extent:

	Min	Max	Steps
Y	-35.0	35.0	7.0
Z	-175.0	-125.0	5.0



Plot #10 (1/2)

Date:	2006/6/28	Position:	Bot. 0mm to phantom
Filename:	G120_Toshiba_bot0_11g-6.txt	Phantom:	HeadBox2-test.csv
Device Tested:	G-120	Head Rotation:	0
Antenna:	PCB printed	Test Frequency:	11g_2437MHz
Shape File:	G-120_Toshiba-bot.csv	Power Level:	24.62 dBm

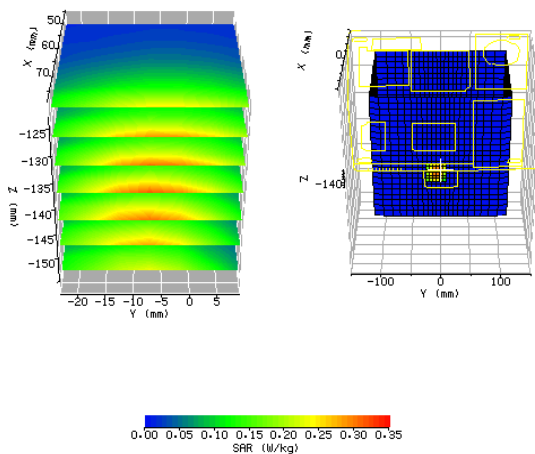
Probe: 0136
Cal File: SN0136_2450_CW_BODY

Cal Factors:

	X	Y	Z
Air	490	377	387
DCP	20	20	20
Lin	.435	.435	.435

Amp Gain: 2
Averaging: 1
Batteries Replaced: -

Liquid: 15.5cm
Type: 2450 MHz Body
Conductivity: 1.9236
Relative Permittivity: 53.516
Liquid Temp (deg C): 23
Ambient Temp (deg C): 22
Ambient RH (%): 56
Density (kg/m3): 1000
Software Version: 2.33VPM

**ZOOM SCAN RESULTS:**

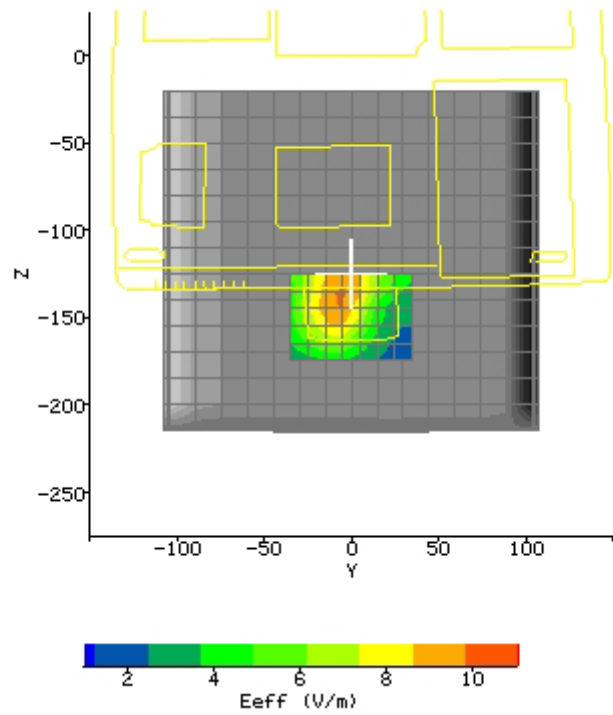
Spot SAR (W/kg):	Start Scan	End Scan
	0.085	0.084
Change during Scan (%)	-1.41	
Max E-field (V/m):	12.78	
Max SAR (W/kg)	1g	10g
	0.263	0.158
Location of Max (mm):	X	Y
	78.1	-23.0
		Z
		-138.1

Plot #10 (2/2)

AREA SCAN:

Scan Extent:

	Min	Max	Steps
Y	-35.0	35.0	7.0
Z	-175.0	-125.0	5.0



Plot #11 (1/2)

Date:	2006/6/28	Position:	Per. 0mm to phantom
Filename:	G120_Toshiba_per0_11b-6.txt	Phantom:	HeadBox2-test.csv
Device Tested:	G-120	Head Rotation:	0
Antenna:	PCB printed	Test Frequency:	11b_2437MHz
Shape File:	G-120_Toshiba-per.csv	Power Level:	20.62 dBm

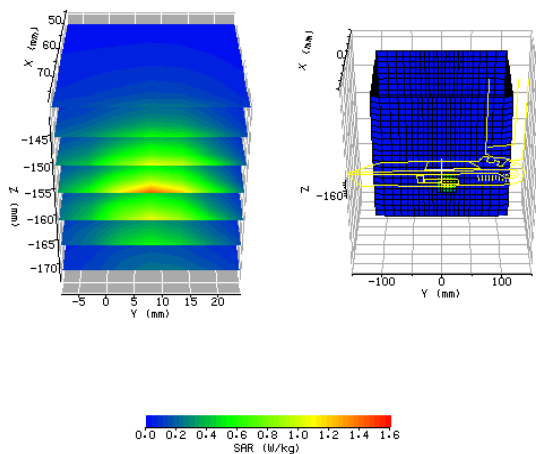
Probe: 0136
Cal File: SN0136_2450_CW_BODY

Cal Factors:

	X	Y	Z
Air	490	377	387
DCP	20	20	20
Lin	.435	.435	.435

Amp Gain: 2
Averaging: 1
Batteries Replaced: -

Liquid: 15.5cm
Type: 2450 MHz Body
Conductivity: 1.9236
Relative Permittivity: 53.516
Liquid Temp (deg C): 23
Ambient Temp (deg C): 22
Ambient RH (%): 56
Density (kg/m3): 1000
Software Version: 2.33VPM

**ZOOM SCAN RESULTS:**

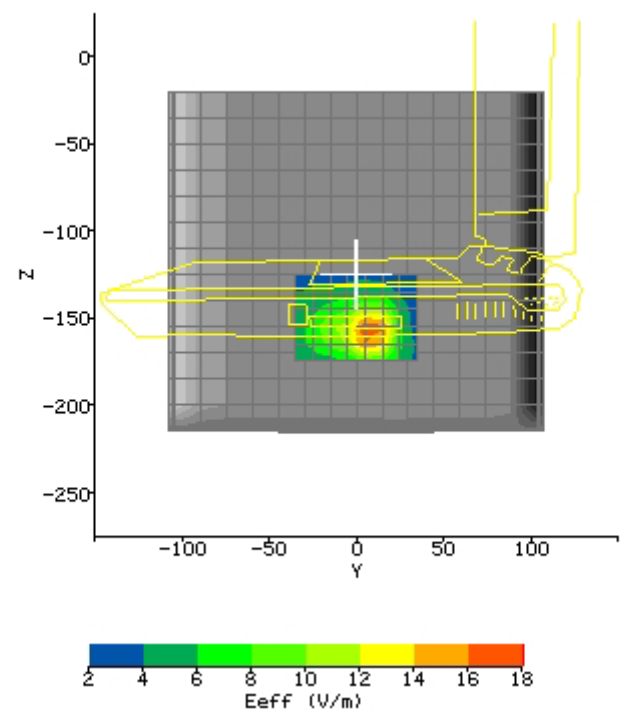
Spot SAR (W/kg):	Start Scan	End Scan
	0.233	0.235
Change during Scan (%)	1.04	
Max E-field (V/m):	27.25	
Max SAR (W/kg)	1g	10g
	0.944	0.405
Location of Max (mm):	X	Y
	78.0	-8.0
		Z
		-158.0

Plot #11 (2/2)

AREA SCAN:

Scan Extent:

	Min	Max	Steps
Y	-35.0	35.0	7.0
Z	-175.0	-125.0	5.0



Plot #12 (1/2)

Date / Time:	2006/6/28	Position:	Per. 0mm to phantom
Filename:	G120_Toshiba_per0_11g-6.txt	Phantom:	HeadBox2-test.csv
Device Tested:	G-120	Head Rotation:	0
Antenna:	PCB printed	Test Frequency:	11g_2437MHz
Shape File:	G-120_Toshiba-per.csv	Power Level:	24.62 dBm

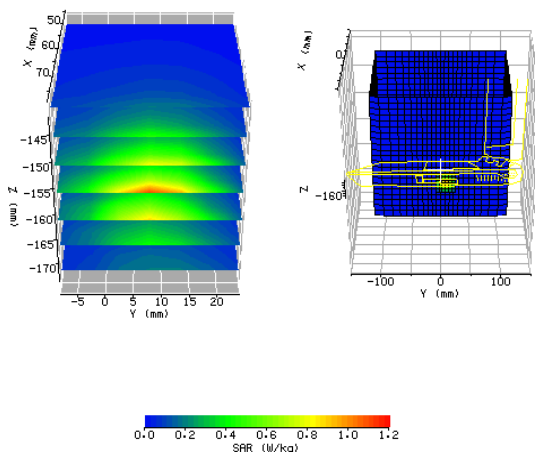
Probe: 0136
Cal File: SN0136_2450_CW_BODY

Cal Factors:

	X	Y	Z
Air	490	377	387
DCP	20	20	20
Lin	.435	.435	.435

Amp Gain: 2
Averaging: 1
Batteries Replaced: -

Liquid: 15.5cm
Type: 2450 MHz Body
Conductivity: 1.9236
Relative Permittivity: 53.516
Liquid Temp (deg C): 23
Ambient Temp (deg C): 22
Ambient RH (%): 56
Density (kg/m3): 1000
Software Version: 2.33VPM

**ZOOM SCAN RESULTS:**

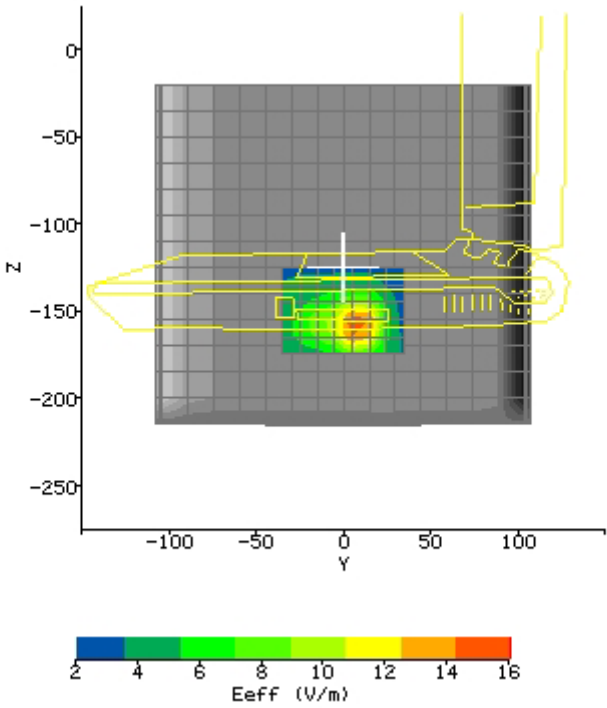
Spot SAR (W/kg):	Start Scan	End Scan
	0.181	0.182
Change during Scan (%)	0.68	
Max E-field (V/m):	23.97	
Max SAR (W/kg)	1g	10g
	0.735	0.316
Location of Max (mm):	X	Y
	78.0	-8.0
		Z
		-158.0

Plot #12 (2/2)

AREA SCAN:

Scan Extent:

	Min	Max	Steps
Y	-35.0	35.0	7.0
Z	-175.0	-125.0	5.0



Plot #13 (1/2)

Date:	2006/6/28	Position:	Per. 15mm to phantom
Filename:	G120_Toshiba_per15_11b-6.txt	Phantom:	HeadBox2-test.csv
Device Tested:	G-120	Head Rotation:	0
Antenna:	PCB printed	Test Frequency:	11b_2437MHz
Shape File:	G-120_Toshiba-per.csv	Power Level:	20.62 dBm

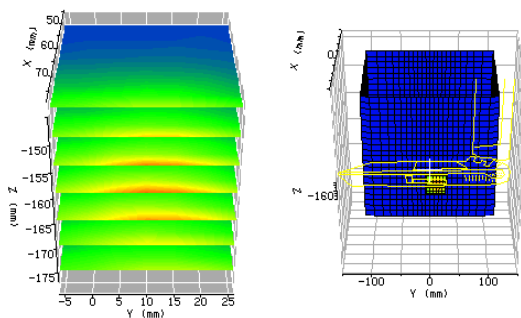
Probe: 0136
Cal File: SN0136_2450_CW_BODY

Cal Factors:

	X	Y	Z
Air	490	377	387
DCP	20	20	20
Lin	.435	.435	.435

Amp Gain: 2
Averaging: 1
Batteries Replaced: -

Liquid: 15.5cm
Type: 2450 MHz Body
Conductivity: 1.9236
Relative Permittivity: 53.516
Liquid Temp (deg C): 23
Ambient Temp (deg C): 22
Ambient RH (%): 56
Density (kg/m3): 1000
Software Version: 2.33VPM

**ZOOM SCAN RESULTS:**

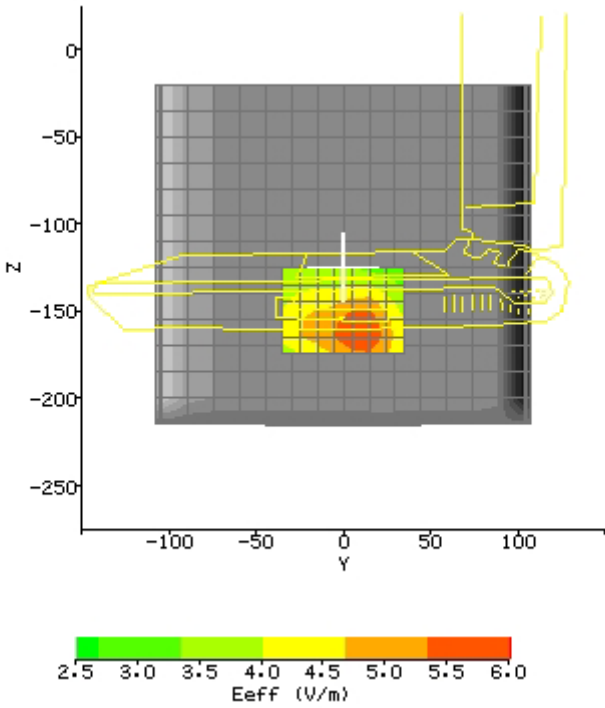
Spot SAR (W/kg):	Start Scan	End Scan
	0.032	0.032
Change during Scan (%)	0	
Max SAR (W/kg)	1g	10g
	0.101	0.060
Location of Max (mm):	X	Y
	78.0	-6.0
		Z
		-160.1

Plot #13 (2/2)

AREA SCAN:

Scan Extent:

	Min	Max	Steps
Y	-35.0	35.0	7.0
Z	-175.0	-125.0	5.0



Plot #14 (1/2)

Date:	2006/6/28	Position:	Per. 15mm to phantom
Filename:	G120_Toshiba_per15_11g-6.txt	Phantom:	HeadBox2-test.csv
Device Tested:	G-120	Head Rotation:	0
Antenna:	PCB printed	Test Frequency:	11g_2437MHz
Shape File:	G-120_Toshiba-per.csv	Power Level:	24.62 dBm

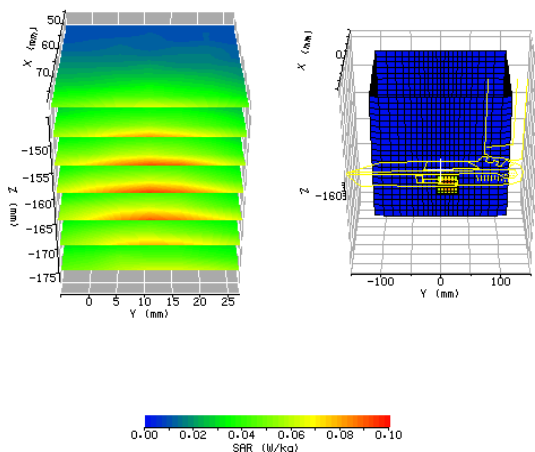
Probe: 0136
Cal File: SN0136_2450_CW_BODY

Cal Factors:

	X	Y	Z
Air	490	377	387
DCP	20	20	20
Lin	.435	.435	.435

Amp Gain: 2
Averaging: 1
Batteries Replaced: -

Liquid: 15.5cm
Type: 2450 MHz Body
Conductivity: 1.9236
Relative Permittivity: 53.516
Liquid Temp (deg C): 23
Ambient Temp (deg C): 22
Ambient RH (%): 56
Density (kg/m3): 1000
Software Version: 2.33VPM

**ZOOM SCAN RESULTS:**

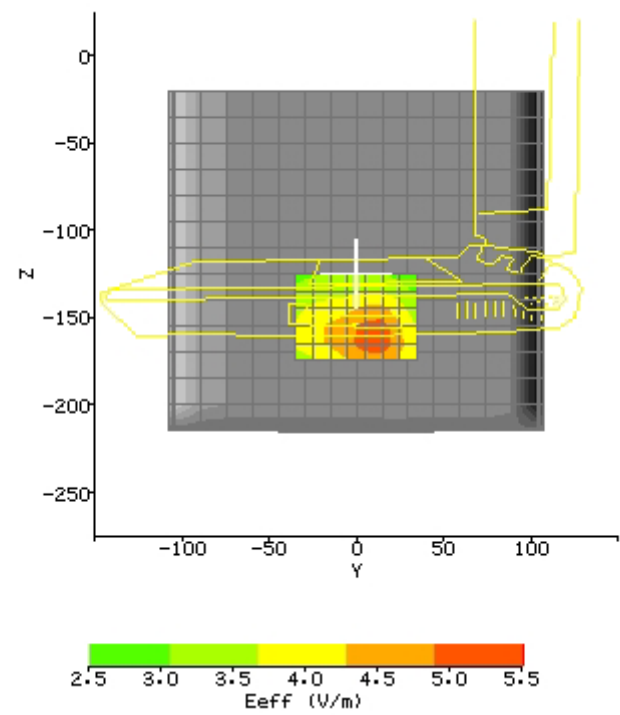
Spot SAR (W/kg):	Start Scan	End Scan
	0.028	0.026
Change during Scan (%)	-3.20	
Max E-field (V/m):	7.00	
Max SAR (W/kg)	1g	10g
	0.078	0.048
Location of Max (mm):	X	Y
	78.1	-5.0
		Z
		-160.1

Plot #14 (2/2)

AREA SCAN:

Scan Extent:

	Min	Max	Steps
Y	-35.0	35.0	7.0
Z	-175.0	-125.0	5.0



Plot #15 (1/2)

Date:	2006/6/28	Position:	Per. 0mm to phantom
Filename:	G120_Toshiba_per0_11b-1.txt	Phantom:	HeadBox2-test.csv
Device Tested:	G-120	Head Rotation:	0
Antenna:	PCB printed	Test Frequency:	11b_2412MHz
Shape File:	G-120_Toshiba-per.csv	Power Level:	20.49 dBm

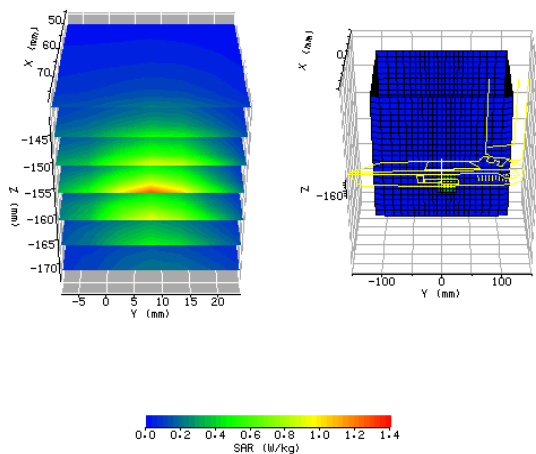
Probe: 0136
Cal File: SN0136_2450_CW_BODY

Cal Factors:

	X	Y	Z
Air	490	377	387
DCP	20	20	20
Lin	.435	.435	.435

Amp Gain: 2
Averaging: 1
Batteries Replaced: -

Liquid: 15.5cm
Type: 2450 MHz Body
Conductivity: 1.9236
Relative Permittivity: 53.516
Liquid Temp (deg C): 23
Ambient Temp (deg C): 22
Ambient RH (%): 56
Density (kg/m3): 1000
Software Version: 2.33VPM

**ZOOM SCAN RESULTS:**

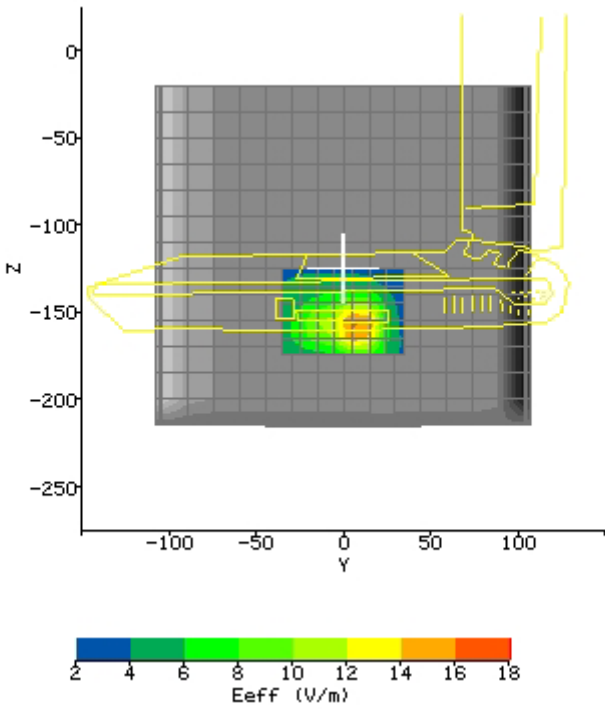
Spot SAR (W/kg):	Start Scan	End Scan
	0.212	0.213
Change during Scan (%)	0.58	
Max E-field (V/m):	25.62	
Max SAR (W/kg)	1g	10g
	0.832	0.360
Location of Max (mm):	X	Y
	78.0	-8.0
		Z
		-158.0

Plot #15 (2/2)

AREA SCAN:

Scan Extent:

	Min	Max	Steps
Y	-35.0	35.0	7.0
Z	-175.0	-125.0	5.0



Plot #16 (1/2)

Date:	2006/6/28	Position:	Per. 0mm to phantom
Filename:	G120_Toshiba_per0_11b-11.txt	Phantom:	HeadBox2-test.csv
Device Tested:	G-120	Head Rotation:	0
Antenna:	PCB printed	Test Frequency:	11b_2462MHz
Shape File:	G-120_Toshiba-per.csv	Power Level:	20.66 dBm

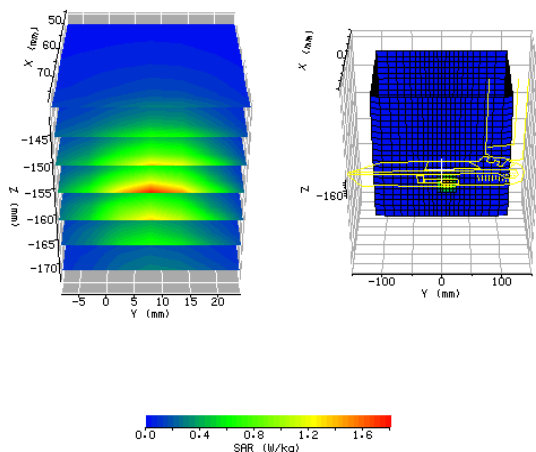
Probe: 0136
Cal File: SN0136_2450_CW_BODY

Cal Factors:

	X	Y	Z
Air	490	377	387
DCP	20	20	20
Lin	.435	.435	.435

Amp Gain: 2
Averaging: 1
Batteries Replaced: -

Liquid: 15.5cm
Type: 2450 MHz Body
Conductivity: 1.9236
Relative Permittivity: 53.516
Liquid Temp (deg C): 23
Ambient Temp (deg C): 22
Ambient RH (%): 56
Density (kg/m3): 1000
Software Version: 2.33VPM

**ZOOM SCAN RESULTS:**

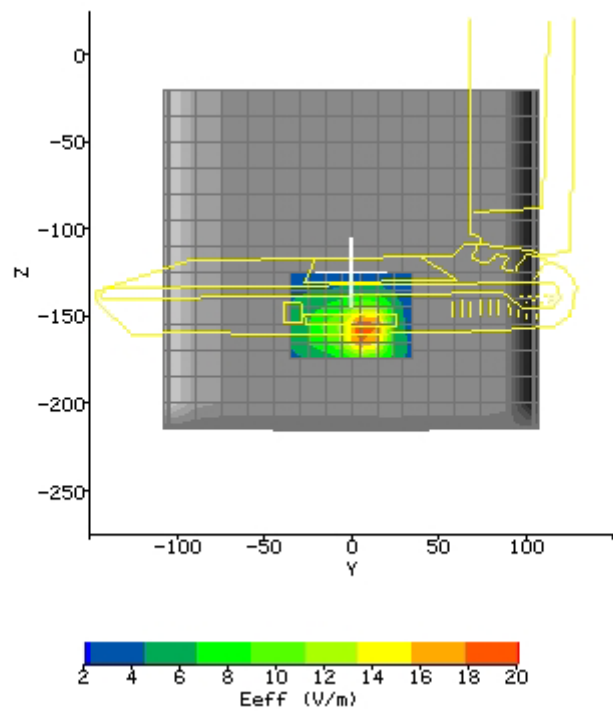
Spot SAR (W/kg):	Start Scan	End Scan
	0.288	0.289
Change during Scan (%)	0.43	
Max E-field (V/m):	30.30	
Max SAR (W/kg)	1g	10g
	1.163	0.494
Location of Max (mm):	X	Y
	78.0	-8.0
		Z
		-158.0

Plot #16 (2/2)

AREA SCAN:

Scan Extent:

	Min	Max	Steps
Y	-35.0	35.0	7.0
Z	-175.0	-125.0	5.0



Plot #17 (1/2)

Date:	2006/6/28	Position:	Bot. 0mm to phantom
Filename:	G120_HP2_bot0_11b-6.txt	Phantom:	HeadBox2-test.csv
Device Tested:	G-120	Head Rotation:	0
Antenna:	PCB printed	Test Frequency:	11b_2437MHz
Shape File:	G-120_HP2-bot.csv	Power Level:	20.62 dBm

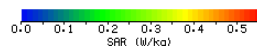
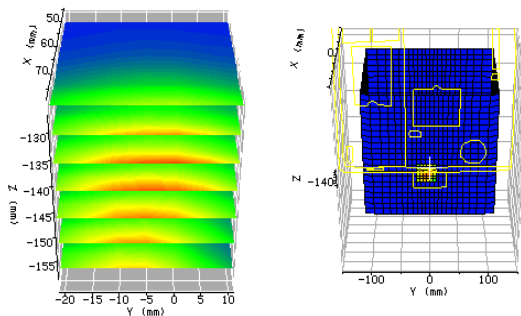
Probe: 0136
Cal File: SN0136_2450_CW_BODY

Cal Factors:

	X	Y	Z
Air	490	377	387
DCP	20	20	20
Lin	.435	.435	.435

Amp Gain: 2
Averaging: 1
Batteries Replaced: -

Liquid: 15.5cm
Type: 2450 MHz Body
Conductivity: 1.9236
Relative Permittivity: 53.516
Liquid Temp (deg C): 23
Ambient Temp (deg C): 22
Ambient RH (%): 56
Density (kg/m3): 1000
Software Version: 2.33VPM

**ZOOM SCAN RESULTS:**

Spot SAR (W/kg):	Start Scan	End Scan
	0.137	0.138

Change during Scan (%) 0.89

Max E-field (V/m): 16.16

Max SAR (W/kg)

1g	10g
0.428	0.255

Location of Max (mm):

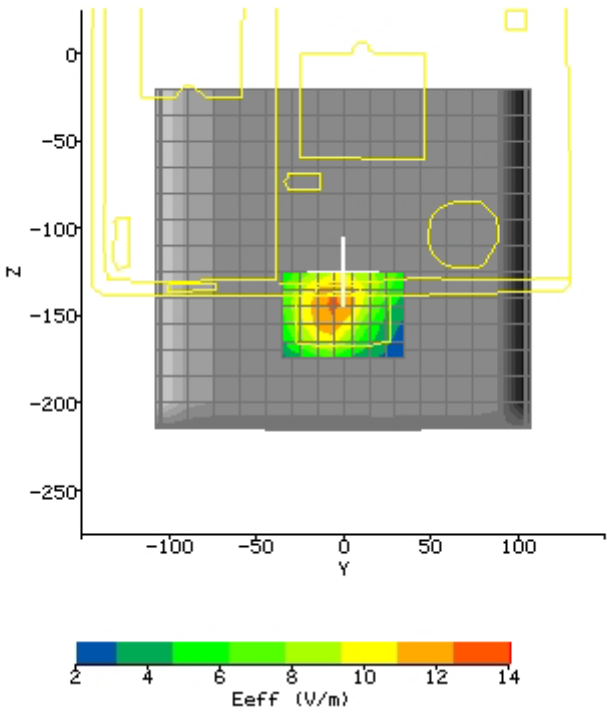
X	Y	Z
78.0	-21.0	-141.2

Plot #17 (2/2)

AREA SCAN:

Scan Extent:

	Min	Max	Steps
Y	-35.0	35.0	7.0
Z	-175.0	-125.0	5.0



Plot #18 (1/2)

Date:	2006/6/28	Position:	Bot. 0mm to phantom
Filename:	G120_HP2_bot0_11g-6.txt	Phantom:	HeadBox2-test.csv
Device Tested:	G-120	Head Rotation:	0
Antenna:	PCB printed	Test Frequency:	11g_2437MHz
Shape File:	G-120_HP2-bot.csv	Power Level:	24.62 dBm

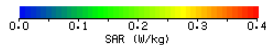
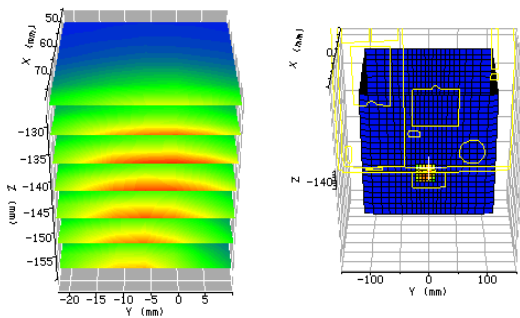
Probe: 0136
Cal File: SN0136_2450_CW_BODY

Cal Factors:

	X	Y	Z
Air	490	377	387
DCP	20	20	20
Lin	.435	.435	.435

Amp Gain: 2
Averaging: 1
Batteries Replaced: -

Liquid: 15.5cm
Type: 2450 MHz Body
Conductivity: 1.9236
Relative Permittivity: 53.516
Liquid Temp (deg C): 23
Ambient Temp (deg C): 22
Ambient RH (%): 56
Density (kg/m3): 1000
Software Version: 2.33VPM



ZOOM SCAN RESULTS:

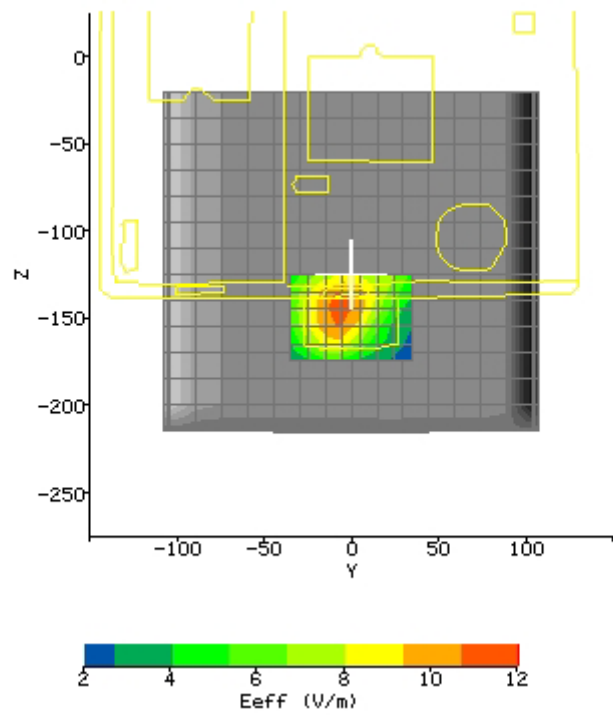
Spot SAR (W/kg):	Start Scan	End Scan
	0.107	0.102
Change during Scan (%)	-3.73	
Max E-field (V/m):	14.13	
Max SAR (W/kg)	1g	10g
	0.324	0.194
Location of Max (mm):	X	Y
	78.0	-22.0
		Z
		-141.3

Plot #18 (2/2)

AREA SCAN:

Scan Extent:

	Min	Max	Steps
Y	-35.0	35.0	7.0
Z	-175.0	-125.0	5.0



Plot #19 (1/2)

Date:	2006/6/28	Position:	Per. 0mm to phantom
Filename:	G120_HP2_per0_11b-6.txt	Phantom:	HeadBox2-test.csv
Device Tested:	G-120	Head Rotation:	0
Antenna:	PCB printed	Test Frequency:	11b_2437MHz
Shape File:	G-120_HP2-per.csv	Power Level:	20.62 dBm

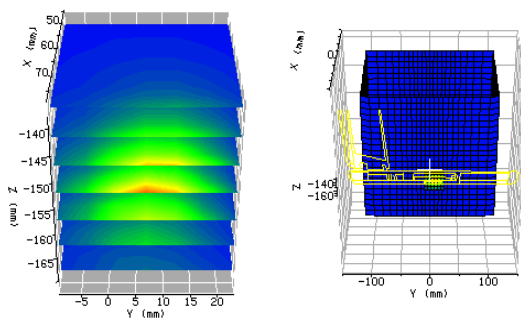
Probe: 0136
Cal File: SN0136_2450_CW_BODY

Cal Factors:

	X	Y	Z
Air	490	377	387
DCP	20	20	20
Lin	.435	.435	.435

Amp Gain: 2
Averaging: 1
Batteries Replaced: -

Liquid: 15.5cm
Type: 2450 MHz Body
Conductivity: 1.9236
Relative Permittivity: 53.516
Liquid Temp (deg C): 23
Ambient Temp (deg C): 22
Ambient RH (%): 56
Density (kg/m3): 1000
Software Version: 2.33VPM

**ZOOM SCAN RESULTS:**

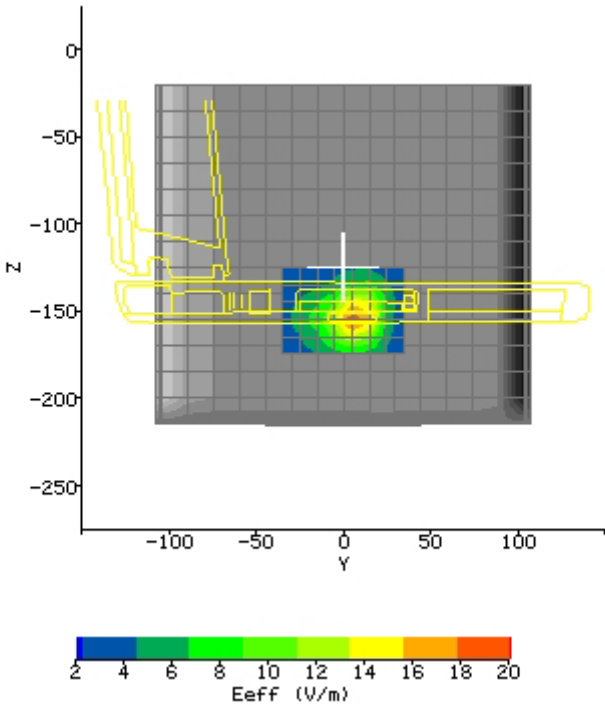
Spot SAR (W/kg):	Start Scan	End Scan
	0.250	0.261
Change during Scan (%)	3.41	
Max E-field (V/m):	27.11	
Max SAR (W/kg)	1g	10g
	0.969	0.422
Location of Max (mm):	X	Y
	78.1	-9.0
		Z
		-153.1

Plot #19 (2/2)

AREA SCAN:

Scan Extent:

	Min	Max	Steps
Y	-35.0	35.0	7.0
Z	-175.0	-125.0	5.0



Plot #20 (1/2)

Date:	2006/6/28	Position:	Per. 0mm to phantom
Filename:	G120_HP2_per0_11g-6.txt	Phantom:	HeadBox2-test.csv
Device Tested:	G-120	Head Rotation:	0
Antenna:	PCB printed	Test Frequency:	11g_2437MHz
Shape File:	G-120_HP2-per.csv	Power Level:	24.62 dBm

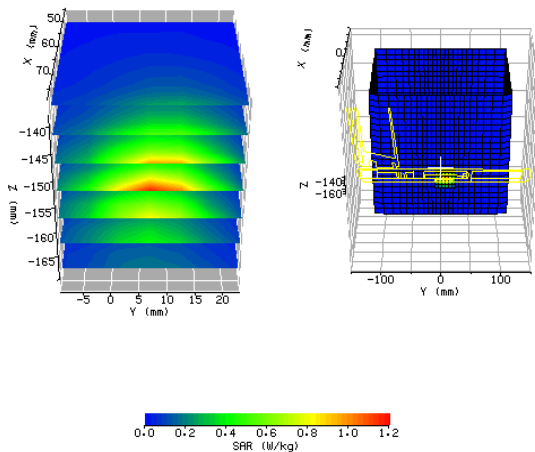
Probe: 0136
Cal File: SN0136_2450_CW_BODY

Cal Factors:

	X	Y	Z
Air	490	377	387
DCP	20	20	20
Lin	.435	.435	.435

Amp Gain: 2
Averaging: 1
Batteries Replaced: -

Liquid: 15.5cm
Type: 2450 MHz Body
Conductivity: 1.9236
Relative Permittivity: 53.516
Liquid Temp (deg C): 23
Ambient Temp (deg C): 22
Ambient RH (%): 56
Density (kg/m3): 1000
Software Version: 2.33VPM

**ZOOM SCAN RESULTS:**

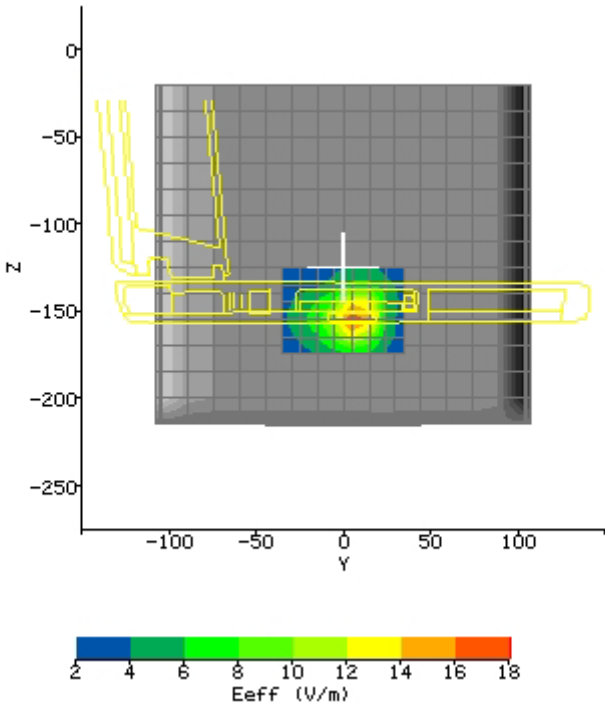
Spot SAR (W/kg):	Start Scan	End Scan
	0.211	0.211
Change during Scan (%)	0	
Max E-field (V/m):	24.65	
Max SAR (W/kg)	1g	10g
	0.795	0.346
Location of Max (mm):	X	Y
	78.1	-9.0
		Z
		-153.1

Plot #20 (2/2)

AREA SCAN:

Scan Extent:

	Min	Max	Steps
Y	-35.0	35.0	7.0
Z	-175.0	-125.0	5.0



Plot #21 (1/2)

Date:	2006/6/28	Position:	Per. 15mm to phantom
Filename:	G120_HP2_per15_11b-6.txt	Phantom:	HeadBox2-test.csv
Device Tested:	G-120	Head Rotation:	0
Antenna:	PCB printed	Test Frequency:	11b_2437MHz
Shape File:	G-120_HP2-per.csv	Power Level:	20.62 dBm

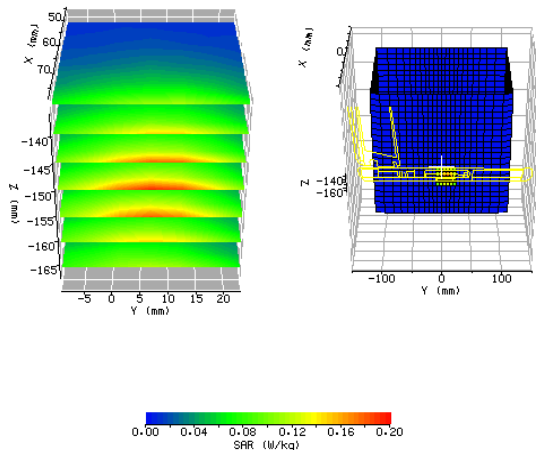
Probe: 0136
Cal File: SN0136_2450_CW_BODY

Cal Factors:

	X	Y	Z
Air	490	377	387
DCP	20	20	20
Lin	.435	.435	.435

Amp Gain: 2
Averaging: 1
Batteries Replaced: -

Liquid: 15.5cm
Type: 2450 MHz Body
Conductivity: 1.9236
Relative Permittivity: 53.516
Liquid Temp (deg C): 23
Ambient Temp (deg C): 22
Ambient RH (%): 56
Density (kg/m3): 1000
Software Version: 2.33VPM



ZOOM SCAN RESULTS:

Spot SAR (W/kg):

Start Scan	End Scan
0.048	0.047

Change during Scan (%): -3.13

Max E-field (V/m): 10.02**Max SAR (W/kg)**

1g	10g
0.154	0.088

Location of Max (mm):

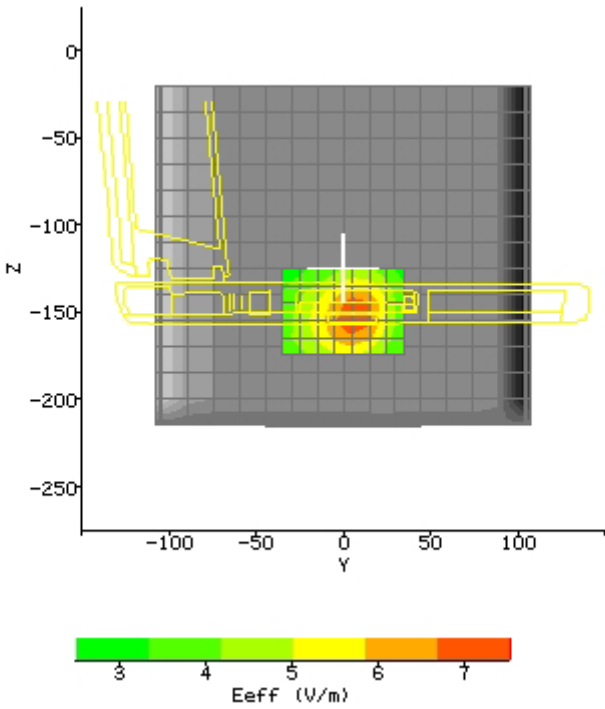
X	Y	Z
78.1	-9.0	-152.0

Plot #21 (2/2)

AREA SCAN:

Scan Extent:

	Min	Max	Steps
Y	-35.0	35.0	7.0
Z	-175.0	-125.0	5.0



Plot #22 (1/2)

Date:	2006/6/28	Position:	Per. 15mm to phantom
Filename:	G120_HP2_per15_11g-6.txt	Phantom:	HeadBox2-test.csv
Device Tested:	G-120	Head Rotation:	0
Antenna:	PCB printed	Test Frequency:	11g_2437MHz
Shape File:	G-120_HP2-per.csv	Power Level:	24.62 dBm

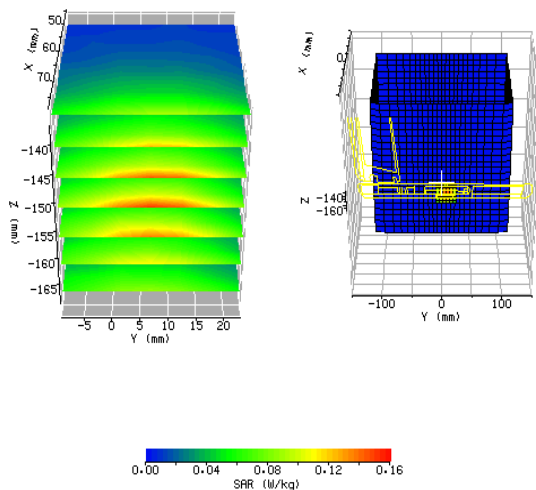
Probe: 0136
Cal File: SN0136_2450_CW_BODY

Cal Factors:

	X	Y	Z
Air	490	377	387
DCP	20	20	20
Lin	.435	.435	.435

Amp Gain: 2
Averaging: 1
Batteries Replaced: -

Liquid: 15.5cm
Type: 2450 MHz Body
Conductivity: 1.9236
Relative Permittivity: 53.516
Liquid Temp (deg C): 23
Ambient Temp (deg C): 22
Ambient RH (%): 56
Density (kg/m3): 1000
Software Version: 2.33VPM

**ZOOM SCAN RESULTS:**

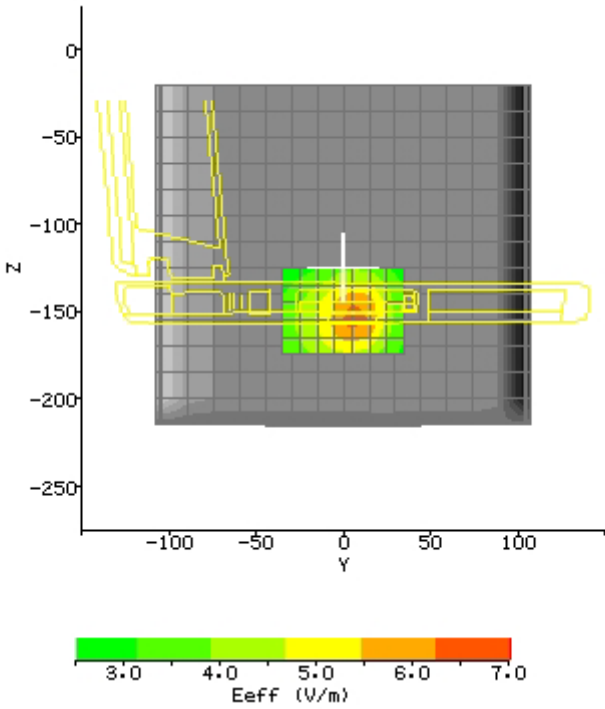
Spot SAR (W/kg):	Start Scan	End Scan	
	0.037	0.037	
Change during Scan (%)	0		
Max E-field (V/m):	8.87		
Max SAR (W/kg)	1g	10g	
	0.121	0.070	
Location of Max (mm):	X	Y	Z
	78.1	-9.0	-152.1

Plot #22 (2/2)

AREA SCAN:

Scan Extent:

	Min	Max	Steps
Y	-35.0	35.0	7.0
Z	-175.0	-125.0	5.0



Plot #23 (1/2)

Date:	2006/6/28	Position:	Per. 0mm to phantom
Filename:	G120_HP2_per0_11b-1.txt	Phantom:	HeadBox2-test.csv
Device Tested:	G-120	Head Rotation:	0
Antenna:	PCB printed	Test Frequency:	11b_2412MHz
Shape File:	G-120_HP2-per.csv	Power Level:	20.49 dBm

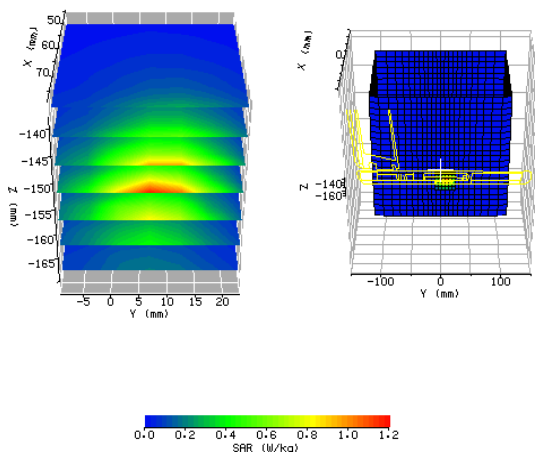
Probe: 0136
Cal File: SN0136_2450_CW_BODY

Cal Factors:

	X	Y	Z
Air	490	377	387
DCP	20	20	20
Lin	.435	.435	.435

Amp Gain: 2
Averaging: 1
Batteries Replaced: -

Liquid: 15.5cm
Type: 2450 MHz Body
Conductivity: 1.9236
Relative Permittivity: 53.516
Liquid Temp (deg C): 23
Ambient Temp (deg C): 22
Ambient RH (%): 56
Density (kg/m3): 1000
Software Version: 2.33VPM

**ZOOM SCAN RESULTS:**

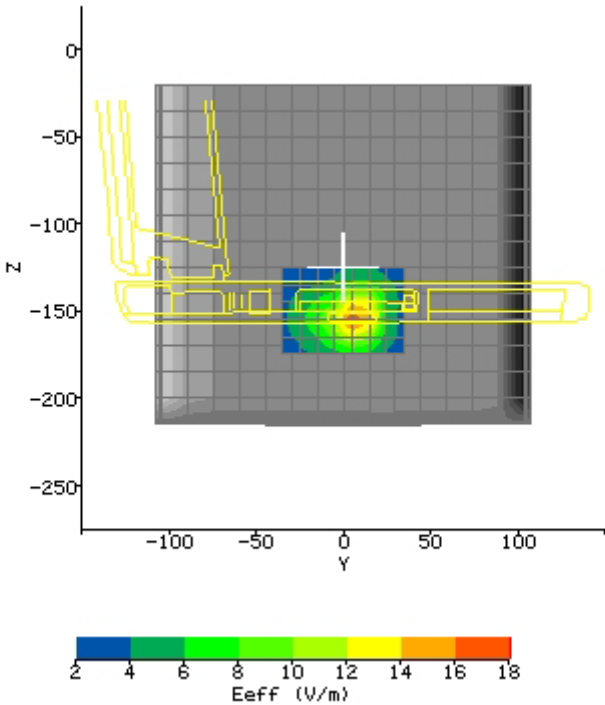
Spot SAR (W/kg):	Start Scan	End Scan
	0.221	0.224
Change during Scan (%)	1.12	
Max E-field (V/m):	24.72	
Max SAR (W/kg)	1g	10g
	0.806	0.354
Location of Max (mm):	X	Y
	78.1	-9.0
		Z
		-153.1

Plot #23 (2/2)

AREA SCAN:

Scan Extent:

	Min	Max	Steps
Y	-35.0	35.0	7.0
Z	-175.0	-125.0	5.0



Plot #24 (1/2)

Date:	2006/6/28	Position:	Per. 0mm to phantom
Filename:	G120_HP2_per0_11b-11.txt	Phantom:	HeadBox2-test.csv
Device Tested:	G-120	Head Rotation:	0
Antenna:	PCB printed	Test Frequency:	11b_2462MHz
Shape File:	G-120_HP2-per.csv	Power Level:	20.66 dBm

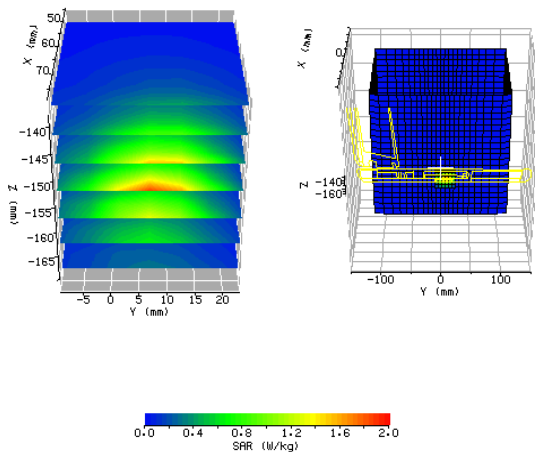
Probe: 0136
Cal File: SN0136_2450_CW_BODY

Cal Factors:

	X	Y	Z
Air	490	377	387
DCP	20	20	20
Lin	.435	.435	.435

Amp Gain: 2
Averaging: 1
Batteries Replaced: -

Liquid: 15.5cm
Type: 2450 MHz Body
Conductivity: 1.9236
Relative Permittivity: 53.516
Liquid Temp (deg C): 23
Ambient Temp (deg C): 22
Ambient RH (%): 56
Density (kg/m3): 1000
Software Version: 2.33VPM

**ZOOM SCAN RESULTS:**

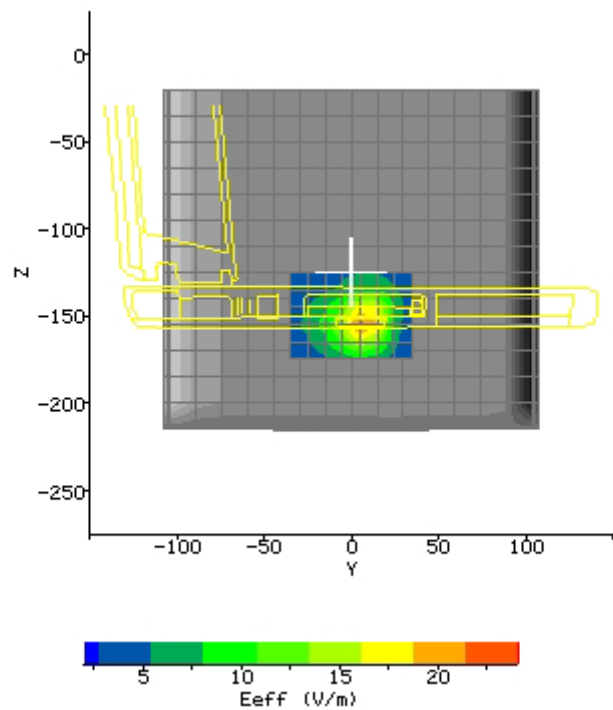
Spot SAR (W/kg):	Start Scan	End Scan	
	0.337	0.336	
Change during Scan (%)	-0.35		
Max E-field (V/m):	31.02		
Max SAR (W/kg)	1g	10g	
	1.266	0.554	
Location of Max (mm):	X	Y	Z
	78.1	-9.0	-153.1

Plot #24 (2/2)

AREA SCAN:

Scan Extent:

	Min	Max	Steps
Y	-35.0	35.0	7.0
Z	-175.0	-125.0	5.0



APPENDIX B - Photographs





FCC ID. : I88G120

EME-060717
Page 87 of 111

**APPENDIX C - E-Field Probe and 2450MHz Balanced Dipole Antenna
Calibration Data**



Probe

Oakfield House
Cudworth Lane
Newdigate
Surrey RH5 5DR

Tel: +44 (0) 1306 631 233

Fax: +44 (0) 1306 631 834

Email: enquiries@indexsar.com

Calibration Certificate
Dosimetric E-field Probe

Type:	IXP-050
-------	----------------

Manufacturer:	IndexSAR, UK
---------------	---------------------

Serial Number:	0136
----------------	-------------

Place of Calibration:	IndexSAR, UK
-----------------------	---------------------

IndexSAR Limited hereby declares that the IXP-050 Probe named above has been calibrated for conformity to the IEEE 1528 and CENELEC En 50361 standards on the date shown below.

Date of Initial Calibration:	March 2006
------------------------------	-------------------

The probe named above will require a calibration check on the date shown below.

Next Calibration Date:	March 2007
------------------------	-------------------

The calibration was carried out using the methods described in the calibration document. Where applicable, the standards used in the calibration process are traceable to the UK's National Physical Laboratory.

Certify Report: Attachment

Approved By:

A handwritten signature in black ink, appearing to read "M. J. Main", is written over the "Approved By:" label.



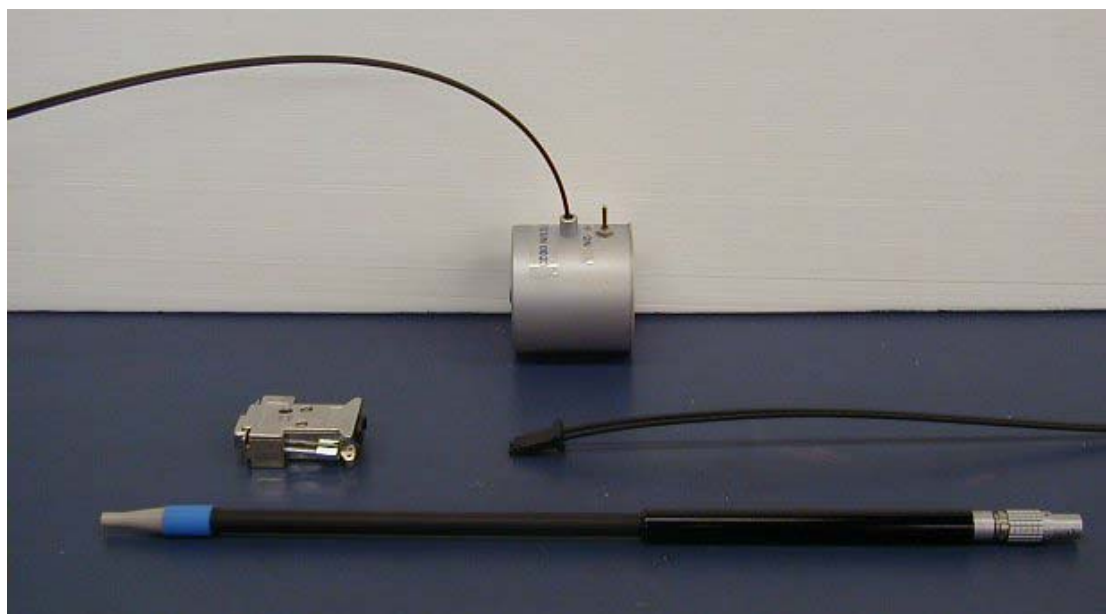
IMMERSIBLE SAR PROBE

CALIBRATION REPORT

Part Number: IXP – 050

S/N 0136

March 2006



Indexsar Limited
Oakfield House
Cudworth Lane
Newdigate
Surrey RH5 5BG
Tel: +44 (0) 1306 632 870
Fax: +44 (0) 1306 631 834
e-mail: enquiries@indexsar.com

INTRODUCTION

This Report presents measured calibration data for a particular Indexsar SAR probe (S/N 0136) and describes the procedures used for characterisation and calibration.

Indexsar probes are characterised using procedures that, where applicable, follow the recommendations of CENELEC [1] and IEEE [2] standards. The procedures incorporate techniques for probe linearisation, isotropy assessment and determination of liquid factors (conversion factors). Calibrations are determined by comparing probe readings with analytical computations in canonical test geometries (waveguides) using normalised power inputs.

Each step of the calibration procedure and the equipment used is described in the sections below.

CALIBRATION PROCEDURE

1. Objectives

The calibration process comprises three stages

Determination of the channel sensitivity factors which optimise the probe's overall rotational isotropy in brain fluid across a range of frequencies

At each frequency of interest, application of these channel sensitivity factors to model the exponential decay of SAR in a waveguide fluid cell, and hence derive the liquid conversion factors at that frequency

Determination of the effective tip radius and angular offset of the X channel which together optimise the probe's spherical isotropy in 900MHz brain fluid

2. Probe output

The probe channel output signals are linearised in the manner set out in Refs [1] and [2]. The following equation is utilized for each channel:

$$U_{lin} = U_{o/p} + U_{o/p}^2 / DCP \quad (1)$$

where U_{lin} is the linearised signal, $U_{o/p}$ is the raw output signal in voltage units and DCP is the diode compression potential in similar voltage units.

DCP is determined from fitting equation (1) to measurements of U_{lin} versus source feed power over the full dynamic range of the probe. The DCP is a characteristic of the Schottky diodes used as the sensors. For the IXP-050 probes with CW signals the DCP values are typically 0.10V (or 20 in the voltage units used by Indexsar software, which are V*200).

In turn, measurements of E-field are determined using the following equation (where output voltages are also in units of V*200):

$$E_{liq}^2 (V/m) = U_{linx} * Air Factor_x * Liq Factor_x \\ + U_{liny} * Air Factor_y * Liq Factor_y \\ + U_{linz} * Air Factor_z * Liq Factor_z \quad (3)$$

Here, "Air Factor" represents each channel's sensitivity, while "Liq Factor" represents the enhancement in signal level when the probe is immersed in tissue-simulant

liquids at each frequency of interest.

3. Selecting channel sensitivity factors to optimise isotropic response

After manufacture, the first stage of the calibration process is to balance the three channels' Air Factor values, thereby optimising the probe's overall axial response ("rotational isotropy").

To do this, a 900MHz waveguide containing head-fluid simulant is selected. Like all waveguides used during probe calibration, this particular waveguide contains two distinct sections: an air-filled launcher section, and a liquid cell section, separated by a dielectric matching window designed to minimise reflections at the air-liquid interface.

The waveguide stands in an upright position and the liquid cell section is filled with 900MHz brain fluid to within 10 mm of the open end. The depth of liquid ensures there is negligible radiation from the waveguide open top and that the probe calibration is not influenced by reflections from nearby objects.

During the measurement, a TE_{01} mode is launched into the waveguide by means of an N-type-to-waveguide adapter. The probe is then lowered vertically into the liquid until the tip is exactly 10mm above the centre of the dielectric window. This particular separation ensures that the probe is operating in a part of the waveguide where boundary corrections are not necessary.

Care must also be taken that the probe tip is centred while rotating.

The exact power applied to the input of the waveguide during this stage of the probe calibration is immaterial since only relative values are of interest while the probe rotates. However, the power must be sufficiently above the noise floor and free from drift.

The dedicated Indexsar calibration software rotates the probe in 10 degree steps about its axis, and at each position, an Indexsar 'Fast' amplifier samples the probe channels 500 times per second for 0.4 s. The raw $U_{o/p}$ data from each sample are packed into 10 bytes and transmitted back to the PC controller via an optical cable. U_{linx} , U_{liny} and U_{linz} are derived from the raw $U_{o/p}$ values and written to an Excel template.

Once data have been collected from a full probe rotation, the Air Factors are adjusted using a special Excel Solver routine to equalise the output from each channel and hence minimise the rotational isotropy. This automated approach to optimisation removes the effect of human bias.

Figure 5 represents the output from each diode sensor as a function of probe rotation angle. The directionality of the orthogonally-arranged sensors can be checked by analysing the data using dedicated Indexsar software, which displays the data in 3D format, a representative image of which is shown in Figure 3. The left-hand side of this diagram shows the individual channel outputs after linearisation (see above). The program uses these data to balance the channel outputs and then applies an optimisation process, which makes fine adjustments to the channel factors for optimum isotropic response.

4. Determination of Conversion ("Liquid") Factors at each frequency of interest

A lookup table of conversion factors for a probe allows a SAR value to be derived at the measured frequencies, and for either brain or body fluid-simulant.

The method by which the conversion factors are assessed is based on the comparison between measured and analytical rates of decay of SAR with height above a dielectric window. This way, not only can the conversion factors for that frequency/fluid combination be determined, but an allowance can also be made for the scale and range of boundary layer effects.

The theoretical relationship between the SAR at the cross-sectional centre of the lossy waveguide as a function of the longitudinal distance (z) from the dielectric separator is given by Equation 4:

$$SAR(z) = \frac{4(P_f - P_b)}{\rho ab \delta} e^{-2z/\delta} \quad (4)$$

Here, the density ρ is conventionally assumed to be 1000 kg/m³, ab is the cross-sectional area of the waveguide, and P_f and P_b are the forward and reflected power inside the lossless section of the waveguide, respectively. The penetration depth δ (which is the reciprocal of the waveguide-mode attenuation coefficient) is a property of the lossy liquid and is given by Equation (5).

$$\delta = \left[\operatorname{Re} \left\{ \sqrt{(\pi/a)^2 + j\omega\mu_o(\sigma + j\omega\epsilon_o\epsilon_r)} \right\} \right]^{-1} \quad (5)$$

where σ is the conductivity of the tissue-simulant liquid in S/m, ϵ_r is its relative permittivity, and ω is the radial frequency (rad/s). Values for σ and ϵ_r are obtained prior to each waveguide test using an Indexsar DiLine measurement kit, which uses the TEM method as recommended in [2]. σ and ϵ_r are both temperature- and fluid-dependent, so are best measured using a sample of the tissue-simulant fluid immediately prior to the actual calibration.

Wherever possible, all DiLine and calibration measurements should be made in the open laboratory at $22 \pm 2.0^\circ\text{C}$; if this is not possible, the values of σ and ϵ_r should reflect the actual temperature. Values employed for calibration are listed in the tables below.

By ensuring the liquid height in the waveguide is at least three penetration depths, reflections at the upper surface of the liquid are negligible. The power absorbed in the liquid is therefore determined solely from the waveguide forward and reflected power.

Different waveguides are used for 835/900MHz, 1800/1900MHz, 2450MHz and 5200/5800MHz measurements. Table A.1 of [1] can be used for designing calibration waveguides with a return loss greater than 20 dB at the most important frequencies used for personal wireless communications, and better than 15dB for frequencies greater than 5GHz. Values for the penetration depth for these specific fixtures and tissue-simulating mixtures are also listed in Table A.1.

According to [1], this calibration technique provides excellent accuracy, with standard uncertainty of less than 3.6% depending on the frequency and medium. The calibration itself is reduced to power measurements traceable to a standard

calibration procedure. The practical limitation to the frequency band of 800 to 5800 MHz because of the waveguide size is not severe in the context of compliance testing.

During calibration, the probe is lowered carefully until it is just touching the cross-sectional centre of the dielectric window. 200 samples are then taken and written to an Excel template file before moving the probe vertically upwards. This cycle is repeated 50 times. The vertical separation between readings is determined from practical considerations of the expected SAR decay rate, and range from 1mm steps at low frequency, through 0.5mm at 2450MHz, down to 0.2mm at 5GHz.

Once the data collection is complete, a Solver routine is run which optimises the measured-theoretical fit by varying the conversion factor, and the boundary correction size and range.

For 450 MHz calibrations, the response of the probe-under-test is compared with the equivalent response of a probe whose 450MHz characteristics have been determined by NPL. The conversion factor of the probe-under-test can then be deduced.

5. Measurement of Spherical Isotropy

The setup for measuring the probe's spherical isotropy is shown in Figure 2.

A box phantom containing 900MHz head fluid is irradiated by a vertically-polarised, tuned dipole, mounted to the side of the phantom on the robot's seventh axis. During calibration, the spherical response is generated by rotating the probe about its axis in 20 degree steps and changing the dipole polarisation in 10 degree steps.

By using the VPM technique discussed below, an allowance can also be made for the effect of E-field gradient across the probe's spatial extent. This permits values for the probe's effective tip radius and X-channel angular offset to be modelled until the overall spherical isotropy figure is optimised.

The dipole is connected to a signal generator and amplifier via a directional coupler and power meter. As with the determination of rotational isotropy, the absolute power level is not important as long as it is stable.

The probe is positioned within the fluid so that its sensors are at the same vertical height as the centre of the source dipole. The line joining probe to dipole should be perpendicular to the phantom wall, while the horizontal separation between the two should be small enough for VPM corrections to be applicable, without encroaching near the boundary layer of the phantom wall. VPM corrections require a knowledge of the fluid skin depth. This is measured during the calibration by recording the E-field strength while systematically moving the probe away from the dipole in 2mm steps over a 20mm range.

VPM (Virtual Probe Miniaturisation)

SAR probes with 3 diode-sensors in an orthogonal arrangement are designed to display an isotropic response when exposed to a uniform field. However, the probes are ordinarily used for measurements in non-uniform fields and isotropy is not assured when the field gradients are significant compared to the dimensions of the tip containing the three orthogonally-arranged dipole sensors.

It becomes increasingly important to assess the effects of field gradients on SAR probe readings when higher frequencies are being used. For Indexsar IXP-050

probes, which are of 5mm tip diameter, field gradient effects are minor at GSM frequencies, but are major above 5GHz. Smaller probes are less affected by field gradients and so probes, which are significantly less than 5mm diameter, would be better for applications above 5GHz.

The IndexSAR report IXS0223 describes theoretical and experimental studies to evaluate the issues associated with the use of probes at arbitrary angles to surfaces and field directions. Based upon these studies, the procedures and uncertainty analyses referred to in P1528 are addressed for the full range of probe presentation angles.

In addition, generalized procedures for correcting for the finite size of immersible SAR probes are developed. Use of these procedures enables application of schemes for virtual probe miniaturization (VPM) – allowing probes of a specific size to be used where physically-smaller probes would otherwise be required.

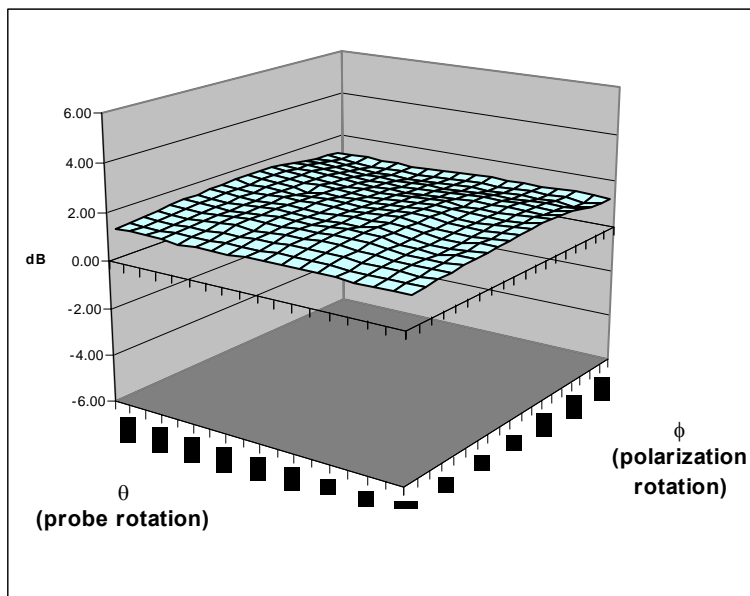
Given the typical dimensions of 3-channel SAR probes presently available, use of the VPM technique extends the satisfactory measurement range to higher frequencies.

CALIBRATION FACTORS MEASURED FOR PROBE S/N 0136

The probe was initially calibrated by the National Physical Laboratory (NPL) at 900, 1800 and 2450 MHz in liquid samples representing both brain liquid and body fluid at these frequencies. Additional calibrations were performed at Indexsar at 450, 835 and 1900 MHz. In both cases, the calibration was for CW signals only, and the axis of the probe was parallel to the direction of propagation of the incident field i.e. end-on to the incident radiation. The axial isotropy of the probe was measured by rotating the probe about its axis in 10 degree steps through 360 degrees in this orientation.

The reference point for the calibration is in the centre of the probe's cross-section at a distance of 2.7 mm from the probe tip in the direction of the probe amplifier. A value of 2.7 mm should be used for the tip to sensor offset distance in the software. The distance of 2.7mm for assembled probes has been confirmed by taking X-ray images of the probe tips (see Figure 8).

It is important that the diode compression point and air factors used in the software are the same as those quoted in the results tables, as these are used to convert the diode output voltages to a SAR value.



Surface Isotropy diagram of IXP-050 Probe S/N 0136 at 900MHz after VPM
(rotational isotropy axial ± 0.05 dB, spherical isotropy ± 0.24 dB)[†]

Probe tip radius	1.25
X Ch. Angle to red dot	0

Frequency	Head		Body	
	Bdy. Corr. – f(0)	Bdy. Corr. – d(mm)	Bdy. Corr. – f(0)	Bdy. Corr. – d(mm)
450	-	-	-	-
835	0.71	1.8	1.01	1.5
900	0	1	0	1
1800	0	1	0	1
1900	1.08	1.2	0.68	2.3
2450	0	1	0	1

[†] Based on previous measurements

SUMMARY OF CALIBRATION FACTORS FOR PROBE IXP-050 S/N 0136

Spherical isotropy measured at 900MHz [†]	0.24	(+/-) dB
--	------	----------

	X	Y	Z	
Air Factors	490	377	387	(V*200)
CW DCPs	20	20	20	(V*200)
DSSS [†]	20	20	20	(V*200)
GSM ^{†‡}	8	9.5	11.2	(V*200)
CDMA [†]	20	20	20	(V*200)

Freq (MHz)	Axial Isotropy		SAR ConvF		Notes
	(+/- dB)		(liq/air)		
	Head	Body	Head	Body	
450	-	-	0.299	0.298	1,3
835	0.05	0.04	0.284	0.304	1,2,3
900	0.05	0.04	0.281	0.299	1,2,4
1800	0.06	0.06	0.344	0.369	1,2,4
1900	0.06	0.06	0.320	0.399	1,2,3
2450	0.05	0.10	0.356	0.435	1,2,4

Notes	
1)	Calibrations done at 22°C +/-2°C
2)	Waveguide calibration
3)	Calibrated by Indexsar
4)	Calibrated by NPL

[†] Based on previous measurements

[‡] GSM factor not used with IXP-020 'fast' probe amplifier

PROBE SPECIFICATIONS

Indexsar probe 0136, along with its calibration, is compared with CENELEC and IEEE standards recommendations (Refs [1] and [2]) in the Tables below. A listing of relevant specifications is contained in the tables below:

Dimensions	S/N 0136	CENELEC [1]	IEEE [2]
Overall length (mm)	350		
Tip length (mm)	10		
Body diameter (mm)	12		
Tip diameter (mm)	5.2	8	8
Distance from probe tip to dipole centers (mm)	2.7		

Dynamic range	S/N 0136	CENELEC [1]	IEEE [2]
Minimum (W/kg)	0.01	<0.02	0.01
Maximum (W/kg) N.B. only measured to > 100 W/kg on representative probes	>100	>100	100

Isotropy (measured at 900MHz)	S/N 0136	CENELEC [1]	IEEE [2]
Axial rotation with probe normal to source (+/- dB)	0.06 Max (See table above)	0.5	0.25
Spherical isotropy covering all orientations to source (+/- dB)	0.24	1.0	0.50

Construction	Each probe contains three orthogonal dipole sensors arranged on a triangular prism core, protected against static charges by built-in shielding, and covered at the tip by PEEK cylindrical enclosure material. No adhesives are used in the immersed section. Outer case materials are PEEK and heat-shrink sleeving.
Chemical resistance	Tested to be resistant to glycol and alcohol containing simulant liquids but probes should be removed, cleaned and dried when not in use.

REFERENCES

[1] CENELEC, EN 50361, July 2001. Basic Standard for the measurement of specific absorption rate related to human exposure to electromagnetic fields from mobile phones.

[2] IEEE 1528, Recommended practice for determining the spatial-peak specific absorption rate (SAR) in the human body due to wireless communications devices: Experimental techniques.

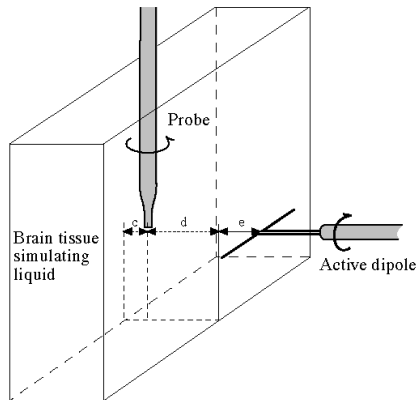


Figure 1. Spherical isotropy jig showing probe, dipole and box filled with simulated brain liquid (see Ref [2], Section A.5.2.1)

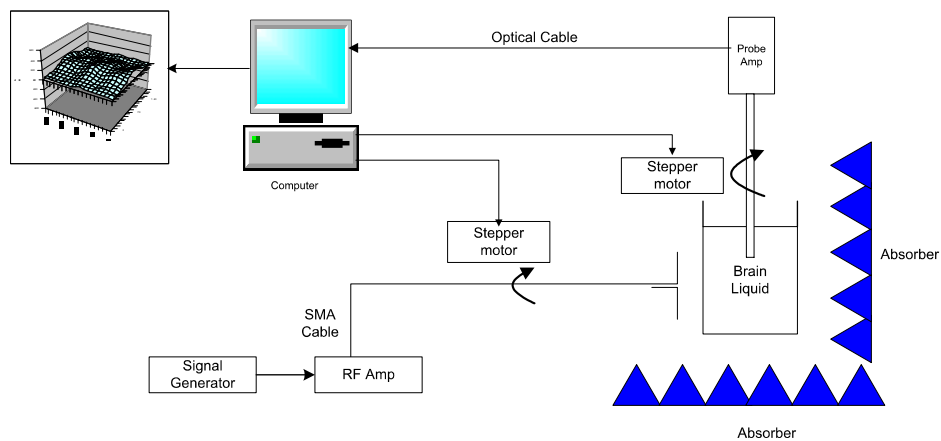


Figure 2. Schematic diagram of the test geometry used for isotropy determination

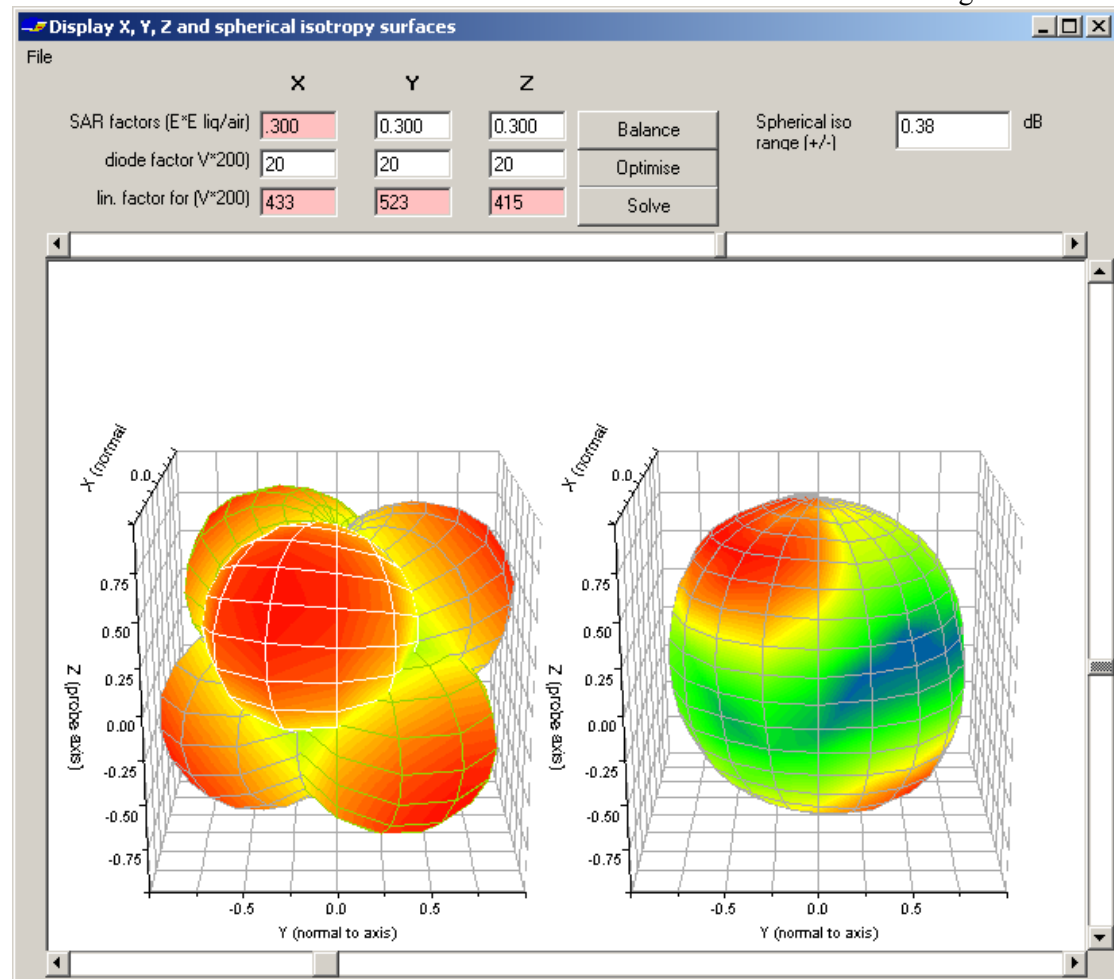


Figure 3. Typical graphical representation of a probe's response to fields applied from each direction. The diagram on the left shows the individual response characteristics of each of the three channels and the diagram on the right shows the resulting probe sensitivity in each direction. The colour range in the figure images the lowest values as blue and the maximum values as red. For the probe S/N 0136, this range is (+/-) 0.24dB.

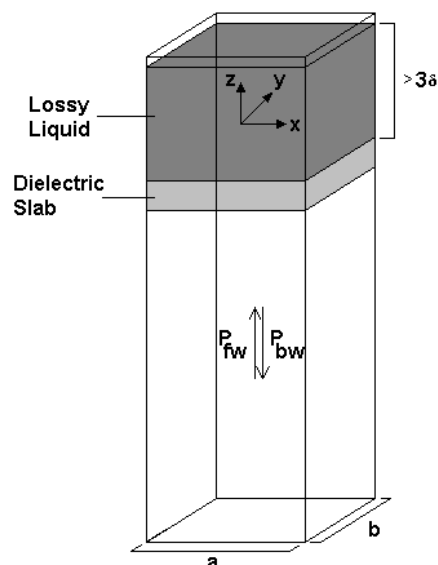


Figure 4. Geometry used for waveguide calibration (after Ref [2]. Section A.3.2.2)

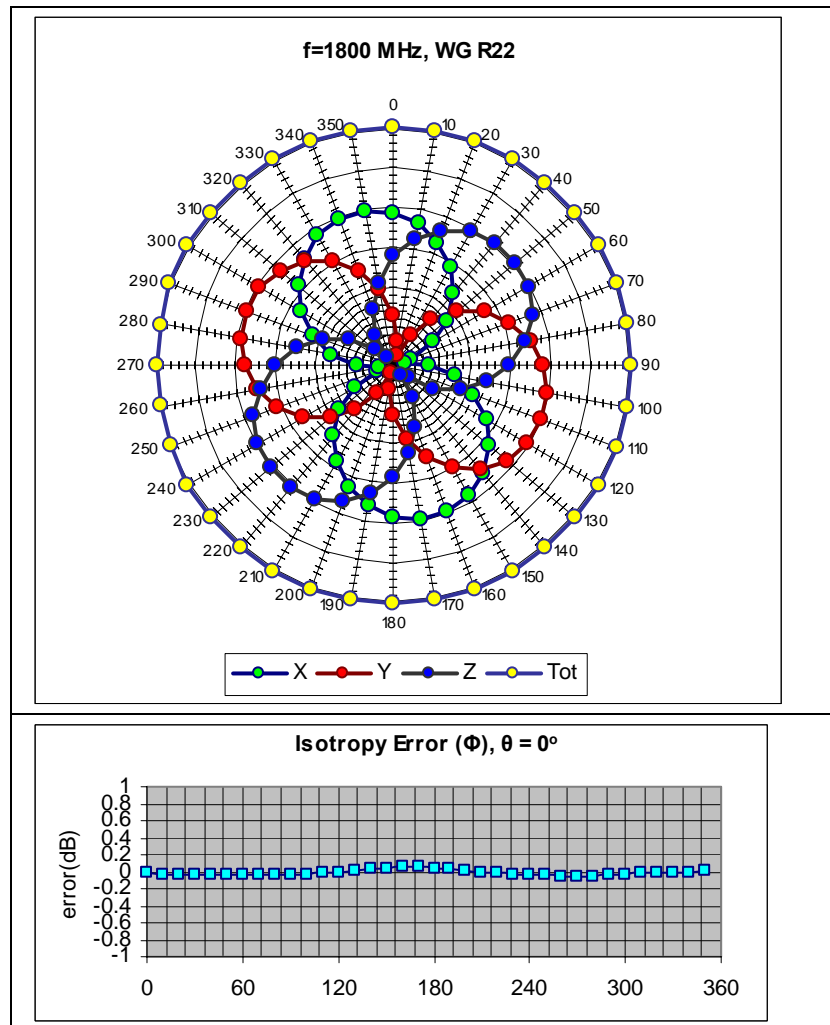


Figure 5. Example of the rotational isotropy of probe S/N 0136 obtained by rotating the probe in a liquid-filled waveguide at 2450 MHz. Similar distributions are obtained at the other test frequencies (1800 and 1900 MHz) both in brain liquids and body fluids (see summary table)

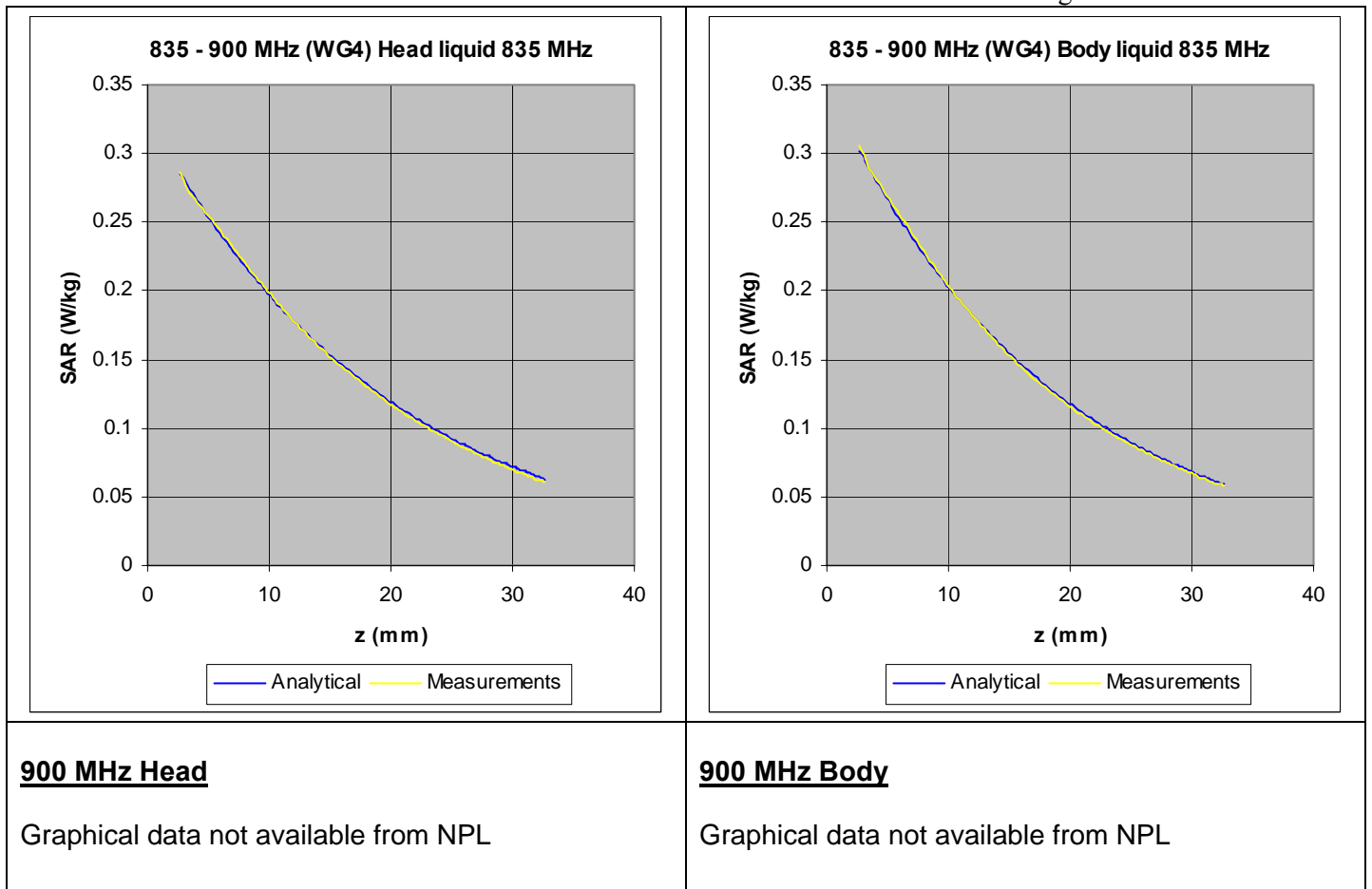


Figure 6. The measured SAR decay function along the centreline of the WG4 waveguide with conversion factors adjusted to fit to the theoretical function for the particular dimension, frequency, power and liquid properties employed.

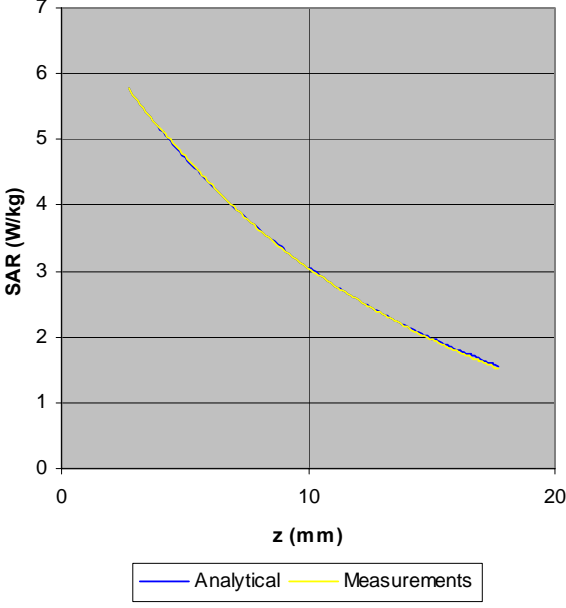
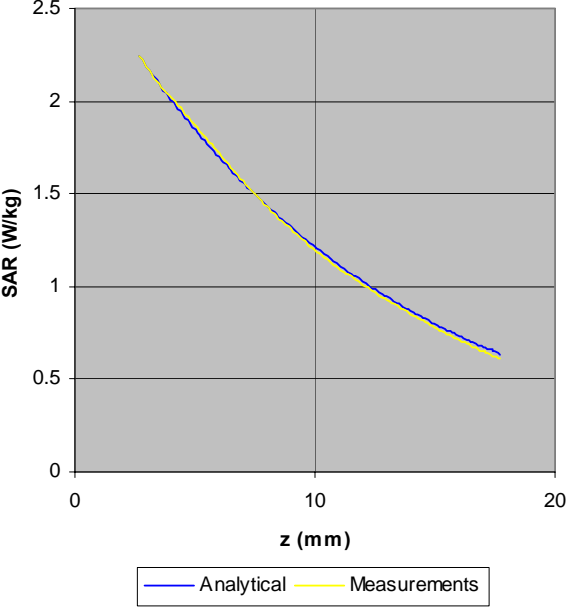
<p><u>1800 MHz Head</u></p> <p>Graphical data not available from NPL</p>	<p><u>1800 MHz Body</u></p> <p>Graphical data not available from NPL</p>
<p>1800 - 1900 (WG8) Head liquid 1900 MHz</p> 	<p>1800 - 1900 (WG8) Body liquid 1900 MHz</p> 
<p><u>2450 MHz Head</u></p> <p>Graphical data not available from NPL</p>	<p><u>2450 MHz Body</u></p> <p>Graphical data not available from NPL</p>

Figure 7. The measured SAR decay function along the centreline of the R22 waveguide with conversion factors adjusted to fit to the theoretical function for the particular dimension, frequency, power and liquid properties employed.

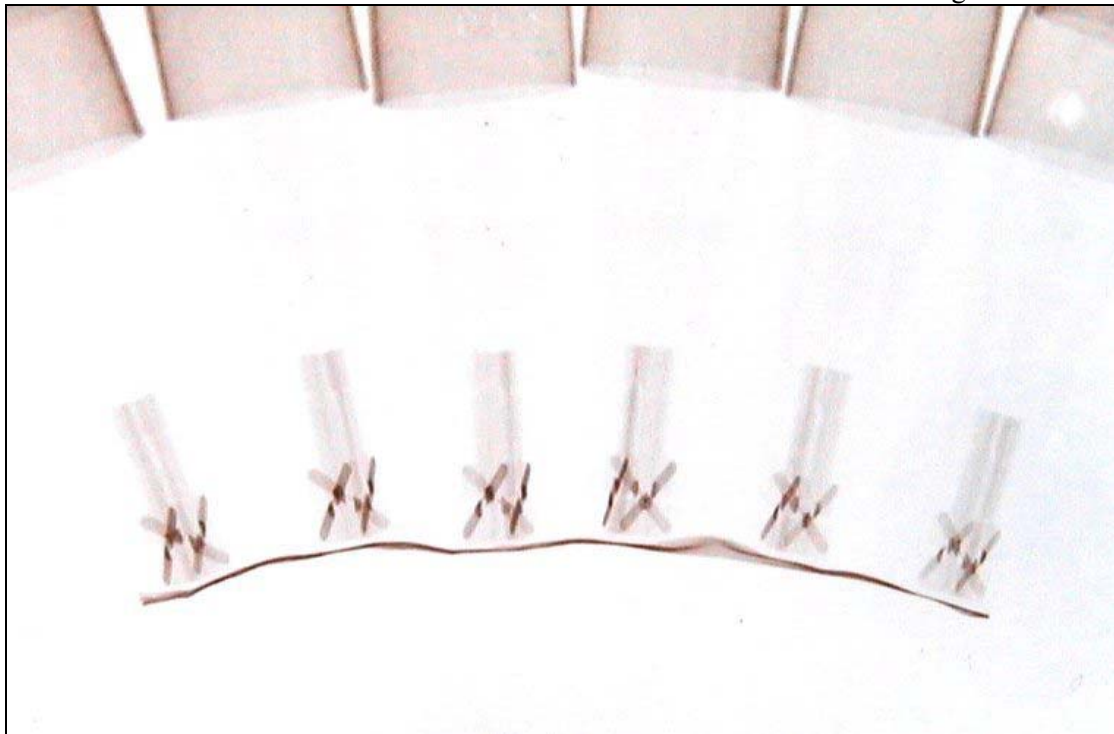


Figure 8: X-ray positive image of 5mm probes

Table indicating the dielectric parameters of the liquids used for calibrations at each frequency

Liquid used	Relative permittivity (measured)	Conductivity (S/m) (measured)
835 MHz BRAIN	41.53	0.89
835 MHz BODY	48.72	1.02
900 MHz BRAIN	40.8	0.95
900 MHz BODY	56.5	1.02
1800 MHz BRAIN	40.5	1.38
1800 MHz BODY	53.5	1.56
1900 MHz BRAIN	38.63	1.47
1900 MHz BODY	54.00	1.66
2450 MHz BRAIN	38.5	1.85
2450 MHz BODY	53.4	1.99



Dipole Certificate

Indexsar Limited
Oakfield House
Cudworth Lane
Newdigate
Surrey RH5 5DR
Tel: +44 (0) 1306 631 233
Fax: +44 (0) 1306 631 834
e-mail: enquiries@indexsar.com

Calibration / Conformance statement Balanced Validation dipole

Type:	IXD-245 2450MHz
Manufacturer:	IndexSAR, UK
Serial Number:	0048
Place of Calibration:	IndexSAR, UK

IndexSAR Limited hereby declares that the IXD series dipole named above has been checked for conformity to the specifications given in the draft IEEE 1528 and CENELEC En 50361 standards on the date shown below.


Date of Calibration/Check:	12 th May 2005
----------------------------	---------------------------

The dipole named above should be periodically re-checked using the procedures set out in the dipole calibration document. It is important that the cautions regarding handling of the dipoles (given in the calibration document) are adhered to.

Next Calibration Date:	May 2007
------------------------	----------

The calibration measurements were carried out using the methods described in the calibration document. Where applicable, the standards used in the calibration process are traceable to the UK's National Physical Laboratory.

Certify Report: Attachment

Approved By: 
--

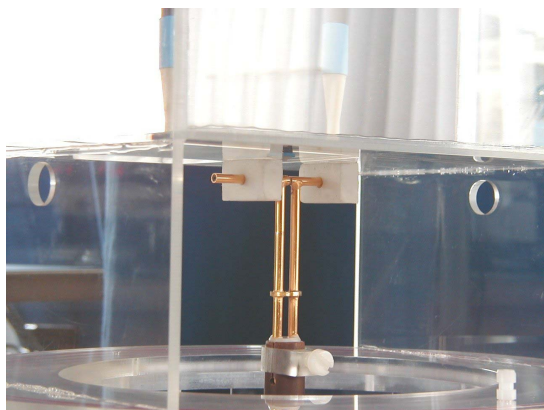


Report No. SN0048_2450
12th May 2005

INDEXSAR
2450MHz validation Dipole
Type IXD-245 S/N 0048

Performance measurements

Ian Bridger



Indexsar, Oakfield House, Cudworth Lane,
Newdigate, Surrey RH5 5BG. UK.
Tel: +44 (0) 1306 632 870 Fax: +44 (0) 1306 631 834
e-mail: enquiries@indexsar.com

1. Measurement Conditions

Measurements were performed using a box-shaped phantom made of PMMA with dimensions designed to meet the accuracy criteria for reasonably-sized phantoms that do not have liquid capacities substantially in excess of the volume of liquid required to fill the Indexsar upright SAM phantoms used for SAR testing of handsets against the ear.

An Anritsu MS4623B vector network analyser was used for the return loss measurements. The dipole was placed in a special holder made of low-permittivity, low-loss materials. This holder enables the dipole to be positioned accurately in the centre of the base of the Indexsar box-phantom used for flat-surface testing and validation checks.

The validation dipoles are supplied with special spacers made from a low-permittivity, low-loss foam material. These spacers are fitted to the dipole arms to ensure that, when the dipole is offered up to the phantom surface, the spacing between the dipole and the liquid surface is accurately aligned according to the guidance in the relevant standards documentation. The spacers are rectangular with a central hole equal to the dipole arm diameter and dimensioned so that the longer side can be used to ensure a spacing of 15mm from the liquid in the phantom (for tests at 900 MHz and below) and the shorter side can be used for tests at 1800MHz and above to ensure a spacing of 10mm from the liquid in the phantom. The spacers are made on a CNC milling machine with an accuracy of 1/40th mm but they may suffer wear and tear and need to be replaced periodically. The material used is Rohacell, which has a relative permittivity of approx. 1.05 and a negligible loss tangent.

The apparatus supplied by Indexsar for dipole validation tests thus includes:

Balanced dipoles for each frequency required are dimensioned according to the guidelines given in IEEE 1528 [1]. The dipoles are made from semi-rigid 50 Ohm co-ax, which is joined by soldering and is gold-plated subsequently. The constructed dipoles are easily deformed, if mis-handled, and periodic checks need to be made of their symmetry.

Rohacell foam spacers designed for presenting the dipoles to 2mm thick PMMA box phantoms. These components also suffer wear and tear and should be replaced when the central hole is a loose-fit on the dipole arms or if the edges are too worn to ensure accurate alignment. The standard spacers are dimensioned for use with 2mm wall thickness (additional spacers are available for 4mm wall thickness).

2. SAR Measurement

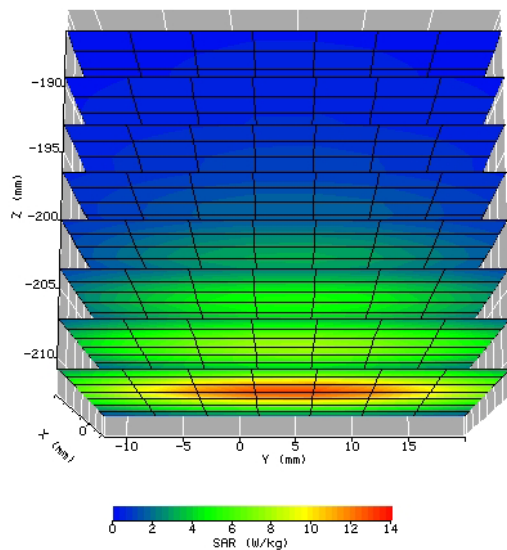
A SAR validation check is performed with the box-phantom located on the SARA2 phantom support base on the SARA2 robot system. Tests are then conducted at a feed power level of approx. 0.25W. The actual power level is recorded and used to normalise the results obtained to the standard input power conditions of 1W (forward power). The ambient temperature is 22°C +/- 1°C and the relative humidity is around 32% during the measurements.

The phantom is filled with a 2450MHz brain liquid using a recipe from [1], which has the following electrical parameters (measured using an Indexsar DiLine kit) at 2450MHz:

Relative Permittivity	39.54
Conductivity	1.95 S/m

The SARA2 software version 2.36 VPM is used with Indexsar IXP_050 probe Serial Number 0171 previously calibrated using waveguides.

The 3D measurements made using the dipole at the bottom of the phantom box is shown below:



The results, normalised to an input power of 1W (forward power) are typically:

Averaged over 1 cm ³ (1g) of tissue	49.132 W/kg
Averaged over 10cm ³ (10g) of tissue	23.992 W/kg

These results can be compared with Table 8.1 in [1]. The agreement is within 10%.

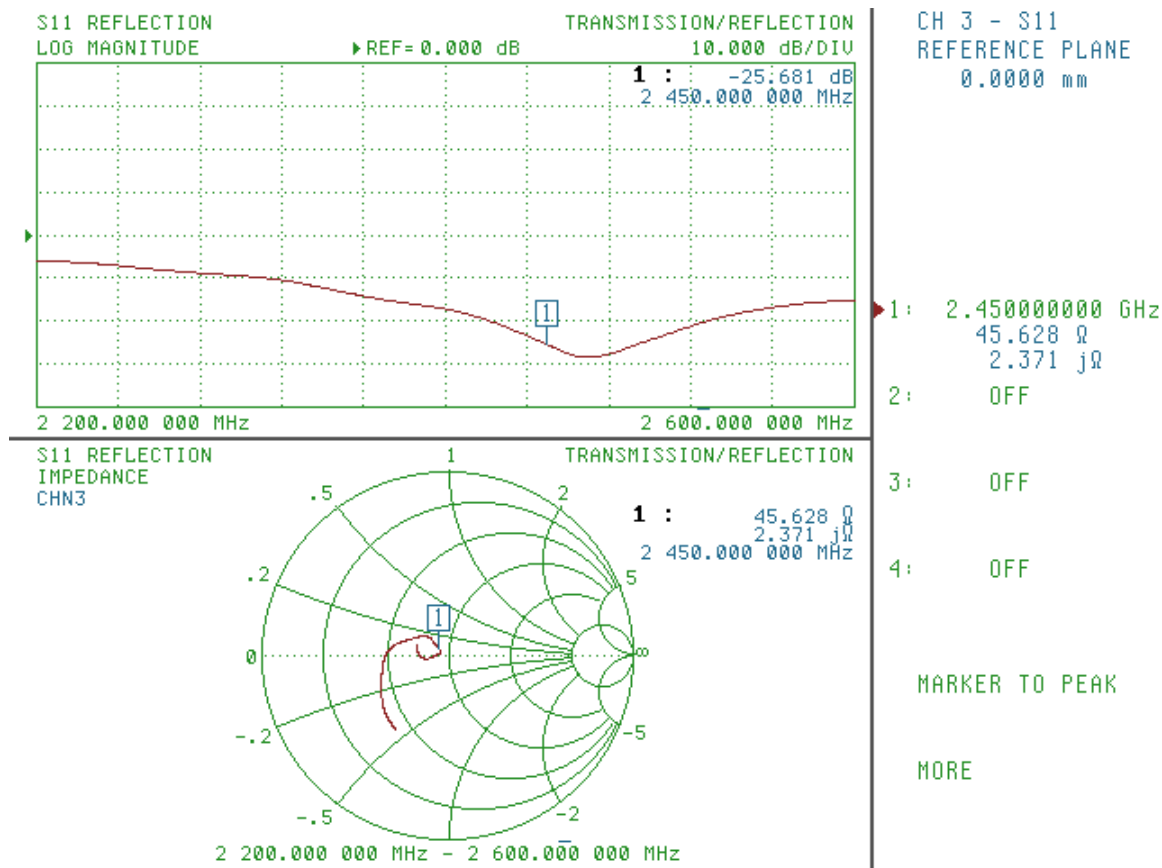
3. Dipole impedance and return loss

The dipoles are designed to have low return loss ONLY when presented against a lossy-phantom at the specified distance. A Vector Network Analyser (VNA) was used to perform a return loss measurement on the specific dipole when in the measurement-location against the box phantom. The distance was as specified in the standard i.e. 15mm from the liquid (for 2450MHz). The Indexasar foam spacers (described above) were used to ensure this condition during measurement.

The impedance was measured at the SMA-connector with the network analyser.
The following parameters were measured:

Dipole impedance at 2450 MHz $\text{Re}\{Z\} = 45.628 \, \Omega$
 $\text{Im}\{Z\} = 2.371 \, \text{m}\Omega$

Return loss at 2450MHz **-25.681 dB**



4. Dipole handling

The dipoles are made from standard, copper-sheathed coaxial cable. In assembly, the sections are joined using ordinary soft-soldering. This is necessary to avoid excessive heat input in manufacture, which would destroy the polythene dielectric used for the cable. The consequence of the construction material and the assembly technique is that the dipoles are fragile and can be deformed by rough handling. Conversely, they can be straightened quite easily as described in this report.

If a dipole is suspected of being deformed, a normal workshop lathe can be used as an alignment jig to restore the symmetry. To do this, the dipole is first placed in the headstock of the lathe (centred on the plastic or brass spacers) and the headstock is rotated by hand (do NOT use the motor). A marker (lathe tool or similar) is brought up close to the end of one dipole arm and then the headstock is rotated by 0.5 rev. to check the opposing arm. If they are not balanced, judicious deformation of the arms can be used to restore the symmetry.

If a dipole has a failed solder joint, the dipole can be fixed down in such a way that the arms are co-linear and the joint re-soldered with a reasonably-powerful electrical soldering iron. Do not use gas soldering irons. After such a repair, electrical tests must be performed as described below.

Please note that, because of their construction, the dipoles are short-circuited for DC signals.

5. Tuning the dipole

The dipole dimensions are based on calculations that assumed specific liquid dielectric properties. If the liquid dielectric properties are somewhat different, the dipole tuning will also vary. A pragmatic way of accounting for variations in liquid properties is to 'tune' the dipole (by applying minor variations to its effective length). For this purpose, Indexsar can supply short brass tube lengths to extend the length of the dipole and thus 'tune' the dipole. It cannot be made shorter without removing a bit from the arm. An alternative way to tune the dipole is to use copper shielding tape to extend the effective length of the dipole. Do both arms equally.

It should be possible to tune a dipole as described, whilst in place in the measurement position as long as the user has access to a VNA for determining the return loss.

6. References

IEEE Std 1528-2003. IEEE recommended practice for determining the peak spatial-average specific absorption rate (SAR) in the human body due to wireless communications devices: Measurement Techniques - Description