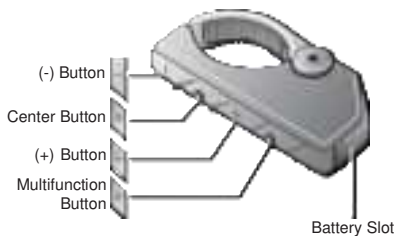


RC4 Manual



Getting Started



Remove the plastic tape from the battery slot to begin using the RC4.

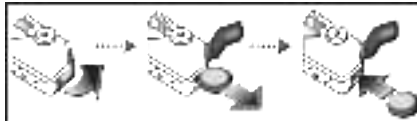
Installation



Note:

If your handlebar requires better grip for holding the RC4 in place, apply the rubber band around the handlebar.

Replacing the Battery



Button Operation

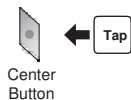
← Tap Tapping

←← Tap Double Tapping

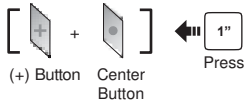
← 1" Press for 1 sec

Power On/Off

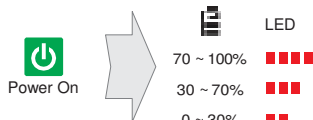
Power On



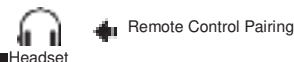
Deep Sleep



Battery Check



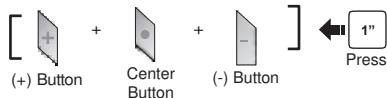
Bluetooth Pairing



Note:

- You can control the headset using the RC4 only after you pair them together.
- The RC4 supports Sena headsets with Bluetooth 4.1 or higher.

Factory Reset



Headset Control

To control your headset using the RC4, please refer to the Quick Reference Guide for button operations on functions such as phone, music, and intercom.

Note:

The Multifunction Button remotely controls special buttons such as the Ambient Mode Button of the 20S and the Camera Button of the 10C. Please refer to the Quick Reference Guide for more details.



Sena Technologies, Inc.

www.sena.com

Customer Support: support.sena.com

This device complies with part 15 of the FCC Rules. Operation is subject to the following two conditions: (1) This device may not cause harmful interference, and (2) this device must accept any interference received, including interference that may cause undesired operation.

This equipment has been tested and found to comply with the limits for a Class B digital device, pursuant to part 15 of the FCC Rules. These limits are designed to provide reasonable protection against harmful interference in a residential installation. This equipment generates, uses and can radiate radio frequency energy and, if not installed and used in accordance with the instructions, may cause harmful interference to radio communications. However, there is no guarantee that interference will not occur in a particular installation. If this equipment does cause harmful interference to radio or television reception, which can be determined by turning the equipment off and on, the user is encouraged to try to correct the interference by one or more of the following measures:

- Reorient or relocate the receiving antenna.
- Increase the separation between the equipment and receiver.
- Connect the equipment into an outlet on a circuit different from that to which the receiver is connected.
- Consult the dealer or an experienced radio/TV technician for help.

Changes or modifications not expressly approved by the party responsible for compliance could void the user's authority to operate the equipment.

RF Exposure Statement

This equipment complies with FCC radiation exposure limits set forth for an uncontrolled environment. End users must follow the specific operating instructions for satisfying RF exposure compliance. The antenna used for this transmitter must not transmit simultaneously with any other antenna or transmitter, except in accordance with FCC multi-transmitter product procedures.

When equipped, the distance between antenna and one's limb is 0mm.