

Audiolux·XT

QIEP-6/1682

**Qi STANDARD WIRELESS CHARGE
TRUE WIRELESS BLUETOOTH STEREO EARBUDS**



INSTRUCTION MANUAL

**PLEASE READ ALL INSTRUCTIONS CAREFULLY
AND RETAIN FOR FUTURE USE**

Getting Started

- Remove the product from the box.
- Please retain all packaging after you have checked and counted all the parts and the contents against the Package Contents list.

Package Contents

- True Wireless Bluetooth Stereo Earpods
- Charging Case
- USB Charging Cable
- Wireless Charging Pad
- 2 silicon ear tips
- Instruction Manual

Features

- Wireless Charging (Qi) enabled True Wireless Bluetooth Stereo Earpods
- Small and elegant design, good fit for your ears
- Dual charging - wireless charging (bonus Wireless Charger included) & traditional wired charging (Micro USB cable included)
- Supports android or iOS
- Supports hands-free call pick-up
- Supports wireless streaming of music
- Charging case included
- Great to charge your Qi enabled mobile phones as well
- Easier recharging - no need for wires while charging the TWS Earpods. Just place it on the wireless charging pad & begin charging!

Safety Instructions

Keep the unit away from heat sources, direct sunlight, humidity, water and any other liquids.

Do not operate the unit if it has been exposed to water, moisture or any other liquids to prevent against electric shock, explosion and/or injury to yourself and damage to the unit.

Do not use the unit if it has been dropped or damaged in any way.

Repairs to electrical equipment should only be performed by a qualified electrician. Improper repairs may place the user at serious risk.

Do not use the unit with wet hands.

Do not put objects into any of the openings.

Keep the unit free from dust, lint etc.

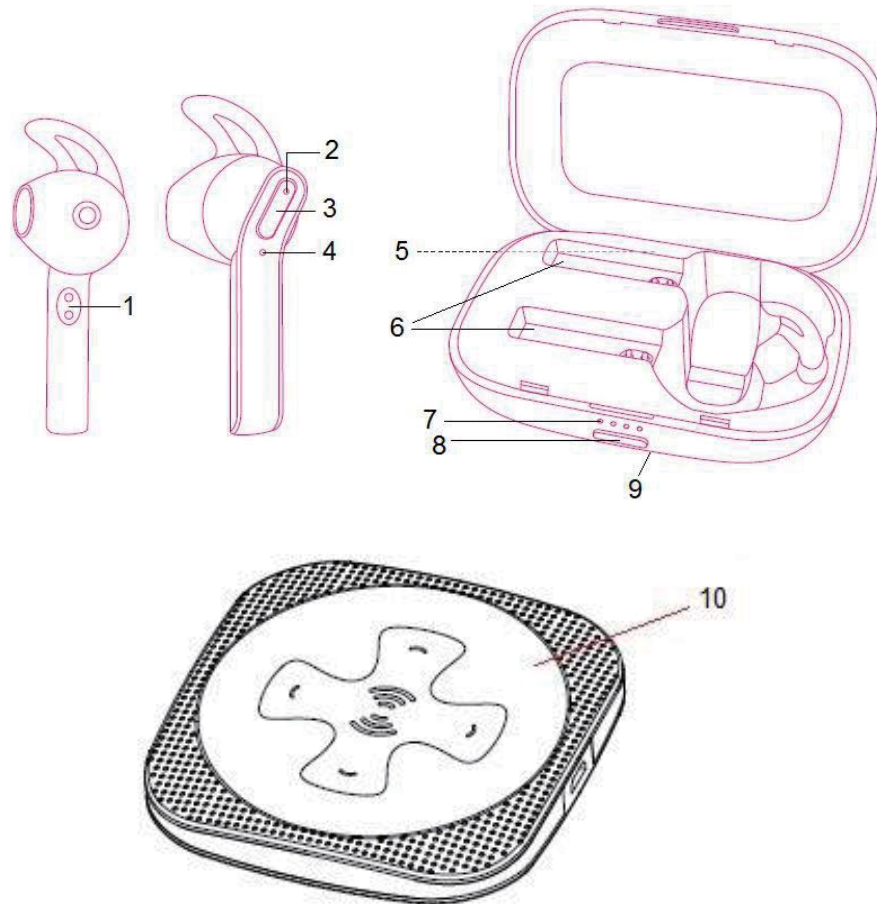
Do not use this unit for anything other than its intended use.

Keep the unit out of reach of children.

This product is not a toy.

Do not use the headset at excessive volume levels, as damage to hearing may occur.

Description of Parts:



1	Charging Connectors
2	LED indicator
3	MF (Multi-Function) / Phone Button
4	Built-In Microphone
5	Charging Port (at the back)
6	Charging Slots
7	Charging Case LED Indicator
8	Power Button (short press to battery status of the charging case)
9	Wireless Charging Receiver (located at the bottom)
10	Wireless Charger

INSTRUCTIONS FOR USE

Charging Instructions

The Charging Case and Bluetooth Earpods come with a built in rechargeable battery. Before using it for the first time we recommend you charge the battery fully. Please recharge the battery by following either methods every time they drain out.

To charge the Charging Case (without Bluetooth Earpods)

Method 1: Plug the Micro USB end of the included USB charging cable into the charging port of the Charging Case. Plug the other end into a suitable USB port such as the one on your computer or other devices made for USB charging. The charging LED indicator flashes blue to indicate that its being charged.

It takes 2-3 hours for the case to charge fully. When the battery is fully charged, the blue LED light will stay on.

Method 2: Connect the Wireless Charger (included) with the USB cable (included) and connect the other end of the cable to a suitable power outlet rated DC 5V 2A. Red LED indicator light around the Wireless Charger will turn on. Then place the Charging Case on Wireless Charging Pad in a way that the base of the Charging Case comes in contact with the center of the Wireless Charging Pad. The charging LED indicator will begin to flash blue, and the red LED indicator light around the Wireless charger will turn to auto-change of blue LED light, indicating that the Earbuds is being charged.

It takes 2-3 hours for the case to charge fully. When the battery is fully charged, the blue LED light will stay on.

To charge the Bluetooth Earpods

1. After fully recharging the Charging Case, disconnect charging case from charging.
2. Put the Bluetooth Earpods into respective charging slots correctly.
3. The LED light indicator on the Earpods turns red to indicate that the battery is being charged. It takes 1-2 hours for the Earpods to fully charge. When the battery is fully charged, the red LED light will turn blue, and then it will turn off within 1 minute. And the blue LED indicator on the Charging Case will turn off after next 20 seconds.

Turning on/off the Bluetooth Earpods

Take out the Earpod from the Charging Case, it will turn on automatically (Or, if the Earpod is not stored inside the Charging Case, press and hold the **MF** button for 3-4 seconds to turn ON.)

Press and hold the MF button of the Earpod for 3-4 seconds to turn OFF the device. (Or, put the Earpod back to the Charging Case, it will turn off for recharging automatically.)

Pairing either one Bluetooth Earpod with Bluetooth devices (phone or tablet that support call-answering)

- Take out one Earpod from the Charging Case, it will turn on automatically and the LED flashes red and blue (Or, if the Earpod is not stored inside the Charging Case, press and hold the **MF** button for 3-4 seconds to turn ON. An indication tone will be heard and the LED flashes red and blue.)
- Place the Bluetooth Earpod and Bluetooth device (phone or tablet that support call answering) no further than 3 feet apart from each other;
- Activate the Bluetooth function on your mobile device. Please refer to the manufacturer's instructions for instructions on enabling Bluetooth on your device.
- Once you have activated Bluetooth on your mobile device, select the "**Qi TWS Earpods**" from the list of available Bluetooth devices.
- If required, enter the password '0000' to confirm & finalize pairing.
- Once paired successfully, another indication tone will be heard and the LED will flash blue slowly.
- You can now start to use the earpod.
- If pairing is unsuccessful, turn off the device first and then re-pair following the above steps.
- Once you have paired the Bluetooth Earpod with a mobile device, the earpod will remember this mobile device and will pair automatically when its Bluetooth is activated within the range, during subsequently pairing. You do not need to re-pair any previously connected devices.
- The Bluetooth Earpod will attempt to automatically connect to the last device it was paired with when switched on. If you want to pair it with a new device, please follow the steps outlined above.

Making a call with the Bluetooth Earpod in Bluetooth mode

Basic operation

Function	Operation	Button
Answer incoming call	Incoming Call	Short press the Phone button to answer an incoming call.
Reject Incoming Call	Incoming Call	Press and hold the Phone button for 2 seconds and release
End call	Incoming Call	After your phone conversation, Short press the Phone button
Redial last number	Standby mode and connected to a device	Short press the Phone button twice

Listening to Music Wirelessly

Please ensure that your device (iPhone, Tablet or Other Smart Phone) is paired with the Bluetooth Earpod to stream music wirelessly. Once it is paired, play music from your device.

Function	Operation	Button
Pause	Playing music	Short press the MF button will pause the music
Play	Pausing	Short press the MF button will resume the music

Note: Other functions including volume increase/decrease, next/previous track, you may need to control through your source device.

Pairing both Bluetooth Earpods with Bluetooth devices (smart phone or tablet etc)

- Take out both Earpods from the Charging Case, it will turn on automatically and the LED flashes red and blue (*Or, if both Earpods are not stored inside the Charging Case, press and hold the **MF** button for 3-4 seconds to turn ON. An indication tone will be heard and the LED flashes red and blue.)
- After few seconds, you would hear another indication tone when both Earpods connected together. The LED light indicator on the right Earpod will flash red and blue, and the left Earpod will flash blue slowly.
- At this point, activate the Bluetooth function on your mobile device, and search for Bluetooth devices near you.
- Once you have activated Bluetooth on your mobile device, select the "**Qi TWS Earpods**" from the list of available Bluetooth devices.

- Once paired successfully, an indication tone will be heard and the LED on both units will flash blue slowly.

Making a call with the Bluetooth Earpods in Stereo pairing mode

Basic operation

Function	Operation	Button
Answer incoming call	Incoming Call	Short press the Phone button of one Earpod to answer an incoming call.
Reject Incoming Call	Incoming Call	Press and hold the Phone button of one Earpod for 2 seconds and release
End call	Incoming Call	After your phone conversation, short press the Phone button of one Earpod
Redial last number	Standby mode and connected to a device	Short press the Phone button of one Earpod twice

Note: both Earpods support phone conversation.

Listening to Music Wirelessly in Stereo pairing mode

Please ensure that your device (iPhone, Tablet or Other Smart Phone) is paired with the Bluetooth Earpods to stream music wirelessly. Once it is paired, play music from your device.

Function	Operation	Button
Pause	Playing music	Short press the MF button of one Earpod will pause the music
Play	Pausing	Short press the MF button of one Earpod will resume the music

Note: Other functions including volume increase/decrease, next/previous track, you may need to control through your source device.

Care and Maintenance

Read the following recommendations before using the Bluetooth Earpods. Following these you will be able to enjoy the product for many years.

- Don't expose the Bluetooth Earpods to liquid, moisture or humidity to avoid the product's internal circuit being affected.
- Don't use abrasive cleaning solvents to clean the device.
- Don't expose the device to extremely high or low temperature as this will shorten the life of electronic devices, destroy the battery or distort certain

plastic parts.

- Don't dispose of the device in a fire as it will result in an explosion.
- Don't expose the device to contact with sharp objects as this will cause scratches and damage.
- Don't let the device fall on the floor. The internal circuit might get damaged.
- Don't attempt to disassemble the device as it may get damaged if you are not professional.

Specifications

Bluetooth specification	Bluetooth 5.0
Operating distance	33 feet
Working time	up to 3 hours (moderate volume)
Charging input voltage	DC 5V
Charging time	2-3 hours for Charging Case 1-2 hours for Bluetooth Earpod
Speaker Power (each Earpod)	5mW
Built-In Battery	Charging Box: 500mAh Bluetooth Earpod: 50mAh (each)
Size	Charging Case: 2.85" (L) x 1.97" (D) x 1.00" (H)mm Bluetooth Earpod: 0.75" (L) x 0.73" (D) x 1.70" (H) mm (each)
Weight	Charging Case: 1.6 oz Bluetooth Earpod: 0.1 oz (each)

(Note: Battery life & charging time may vary based on usage & types of devices used.)

FCC Instructions

Changes or modifications not expressly approved by the party responsible for compliance could void the user's authority to operate the product.

NOTE: This product has been tested and found to comply with the limits for a Class B digital device, pursuant to Part 15 of the FCC Rules. These limits are designed to provide reasonable protection against harmful interference in a residential installation. This product generates, uses and can radiate radio frequency energy and, if not installed and used in accordance with the

instructions, may cause harmful interference to radio communications. However, there is no guarantee that interference will not occur in a particular installation. If the product does cause harmful interference to radio or television reception, which can be determined by turning the equipment off and on, the user is encouraged to try to correct the interference by one or more of the following measures:

- Reorient or relocate the receiving antenna.
- Increase the separation between the product and receiver.
- Connect the product into an outlet on a circuit different from that to which the receiver is connected.
- Consult the dealer or an experienced radio/TV technician for help.

This device complies with part 15 of the FCC Rules. Operation is subject to the following two conditions: (1) This device may not cause harmful interference, and (2) this device must accept any interference received, including interference that may cause undesired operation.

Limited Warranty

This manufacturer's product warranty extends to the original consumer purchaser of the product. Neither the retailer nor any other company involved in the sale or promotion of this product is a co-warrantor of this manufacturer warranty.

WARRANTY DURATION: All materials and workmanship are warranted to the original consumer purchaser for a period of ninety (90) days from the original purchase date.

WARRANTY COVERAGE: This product is warranted against defective materials or workmanship. This warranty is void if the product has been damaged by accident, in shipment, unreasonable use, misuse, neglect, improper service, commercial use, repairs by unauthorized personnel or other causes not arising out of defects in materials or workmanship. This warranty is effective only if the product is purchased and operated in USA and does not extend to any units which have been used in violation of written instructions furnished by manufacturer or to units which have been altered or modified or, to damaged products or parts thereof which have had the serial number removed, altered, defaced or rendered illegible.

WARRANTY DISCLAIMERS: This warranty is in lieu of all warranties expressed or implied and no representative or person is authorized to assume for manufacturer any other liability in connection with the sale of our products. There shall be no claims for defects or failure under any theory of tort, contractor commercial law including but

not limited to, negligence, gross negligence, strict liability, breach of warranty and breach of contract. Under no circumstances will Manufacturer' s / Distributor' s maximum liability exceed the retail value of the product.

WARRANTY PERFORMANCE: During the above 90-day warranty period, a product with a defect will be either repaired or replaced with a reconditioned comparable model (at manufacturer's option). The repaired or replacement product will be in warranty for the balance of the 90-day warranty period and an additional one-month period. No charge will be applicable for such repair or replacement.

SERVICE AND REPAIR: If service is required for this product, you should first contact Midwest Trading Group Customer Service at info@mtradinggroup.com or by calling 1 (866) 815-4714, Monday to Friday 10am to 6pm EST.

NOTE: Manufacturer cannot assume responsibility for loss or damage during incoming shipment. As a precautionary measure, carefully package the product for shipment, and insure it with the carrier. Be sure to enclose the following details with the product: your full name, return address and daytime phone number, a note describing the problem you experienced, a copy of your sales receipt or other proof of purchase to determine warranty status. C.O.D. shipments cannot be accepted.