

PHOTOS TEST REPORT

FROM



Test of: Alien Technology, LLC
to

To: FCC CFR 47 Part 15 Subpart E 15.407

Test Report Serial No.: ALNT64 - ALH 90xx FCC IC New Revision

This report supersedes: NONE

Applicant: Alien Technology, LLC
845 Embedded Way
San Jose, California 95138
USA

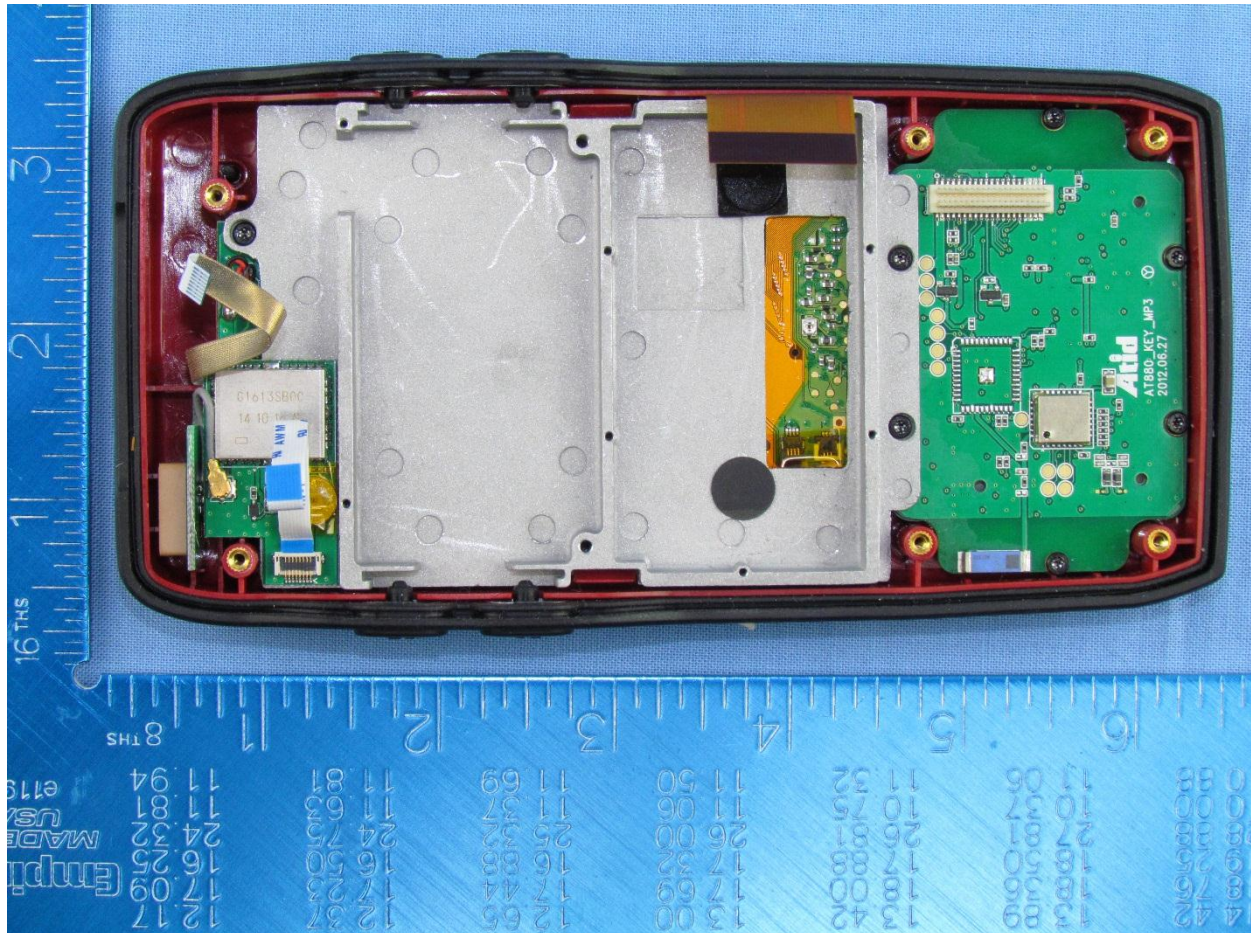
Product Function:

Issue Date: 16 December 2015

1. Internal Photographs

1.1.1. Product – Internal

Antenna 3

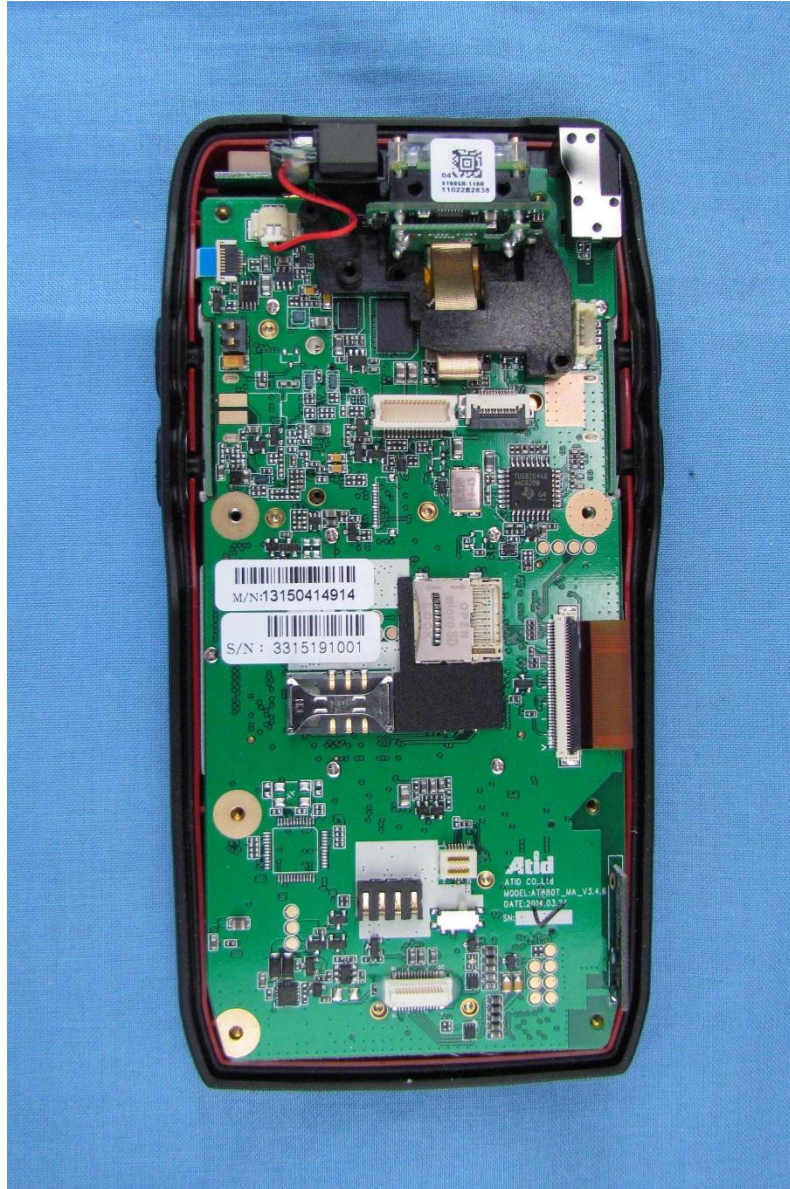


This test report may be reproduced in full only. The document may only be updated by MiCOM Labs personnel. All changes will be noted in the Document History section of the report.



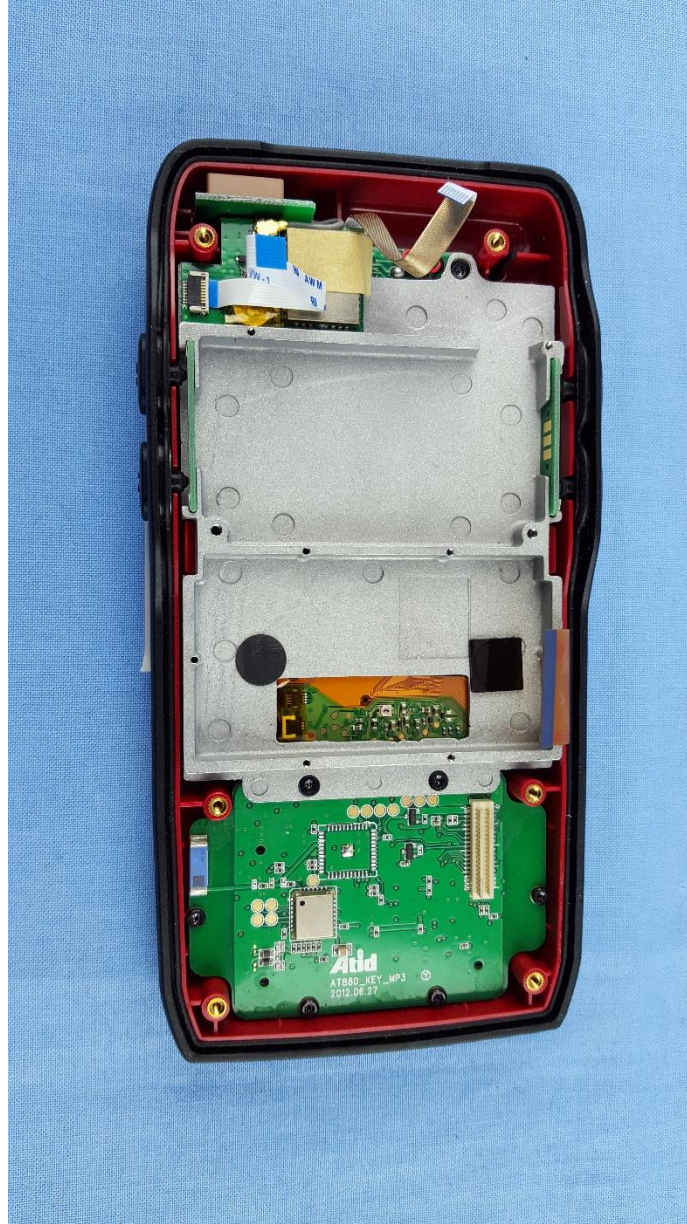
Title: Alien Technology, LLC
To: FCC CFR 47 Part 15 Subpart E 15.407
Serial #: ALNT64 - ALH 90xx FCC IC New Revision
Issue Date: 16 December 2015
Page: 3 of 24

Back Internal

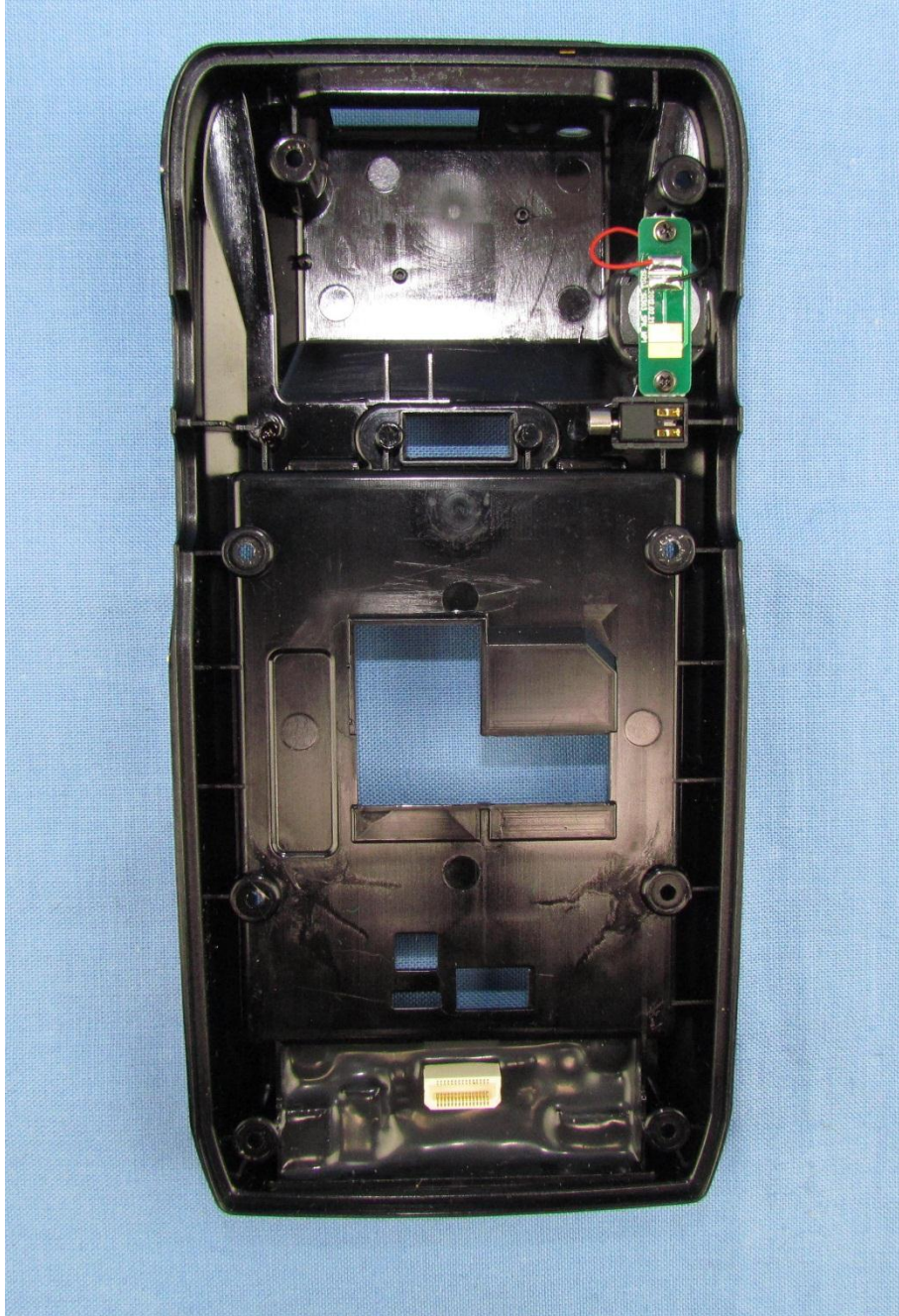


This test report may be reproduced in full only. The document may only be updated by MiCOM Labs personnel. All changes will be noted in the Document History section of the report.

Beneath PCB



Bottom Housing



This test report may be reproduced in full only. The document may only be updated by MiCOM Labs personnel. All changes will be noted in the Document History section of the report.



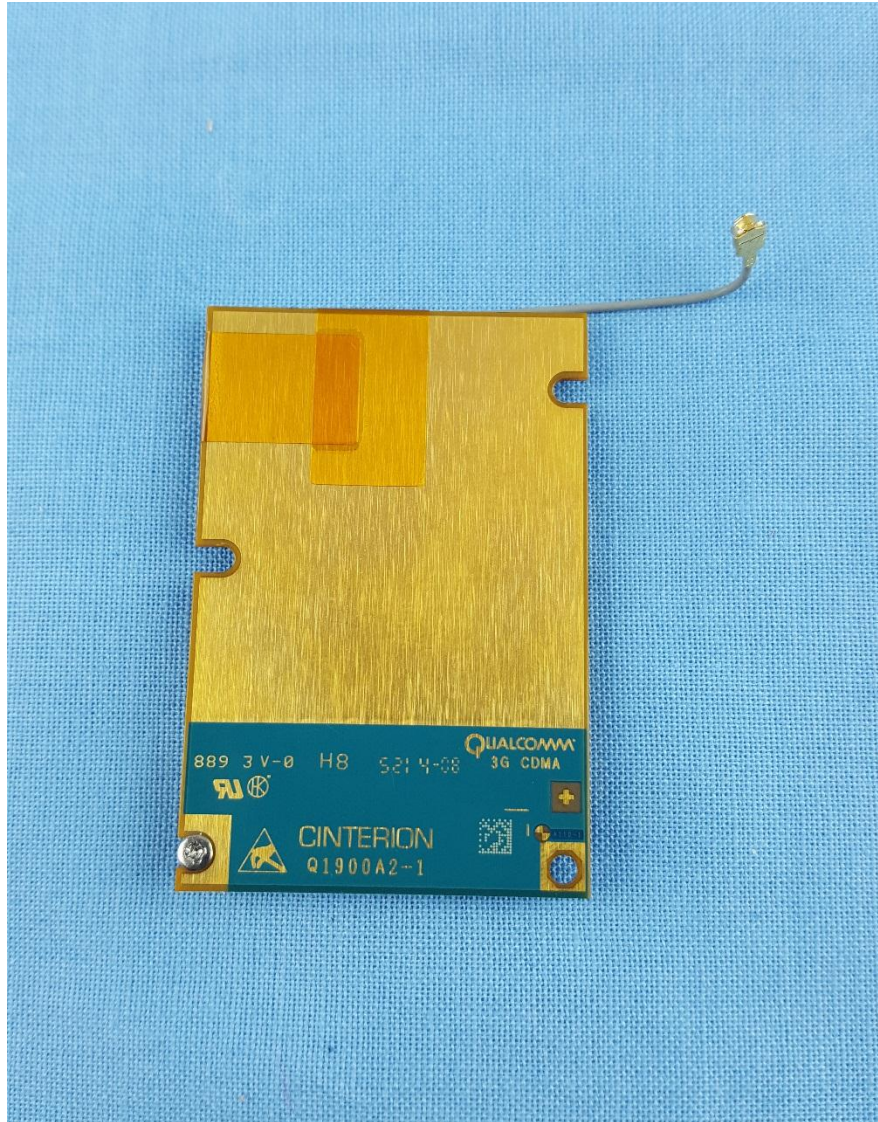
Title: Alien Technology, LLC
To: FCC CFR 47 Part 15 Subpart E 15.407
Serial #: ALNT64 - ALH 90xx FCC IC New Revision
Issue Date: 16 December 2015
Page: 6 of 24

CDMA Card Bottom

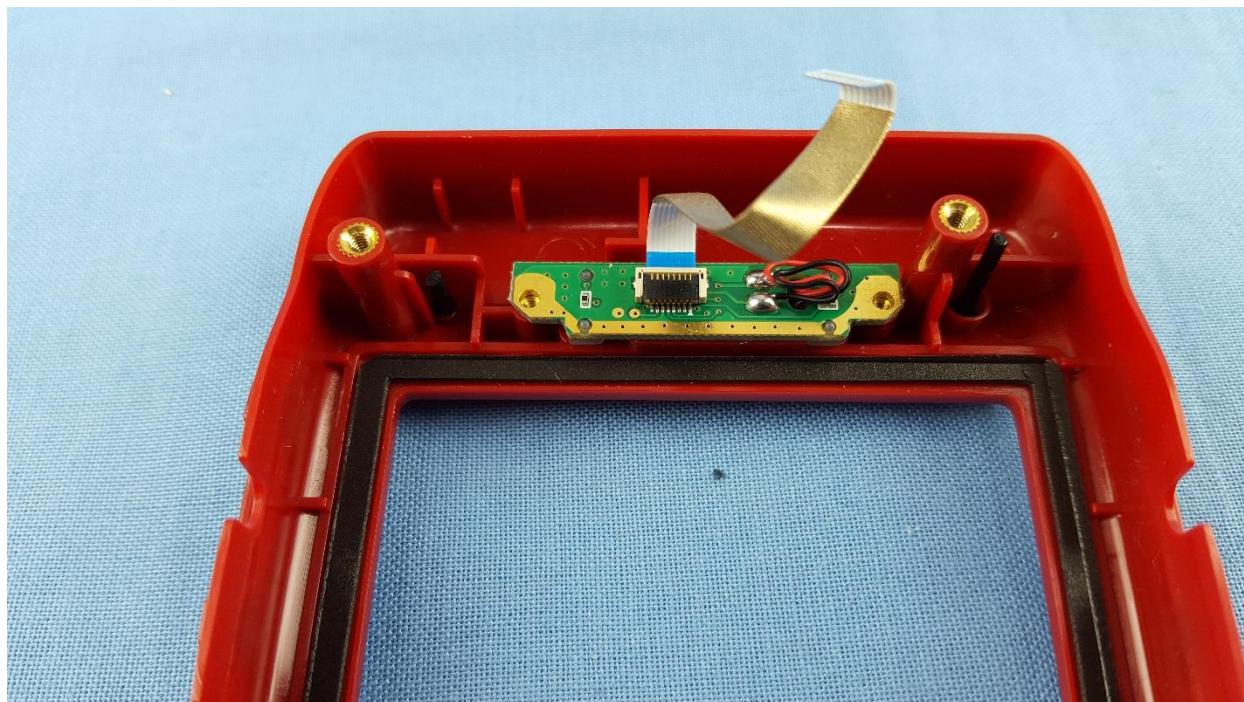


This test report may be reproduced in full only. The document may only be updated by MiCOM Labs personnel. All changes will be noted in the Document History section of the report.

CDMA Card Top



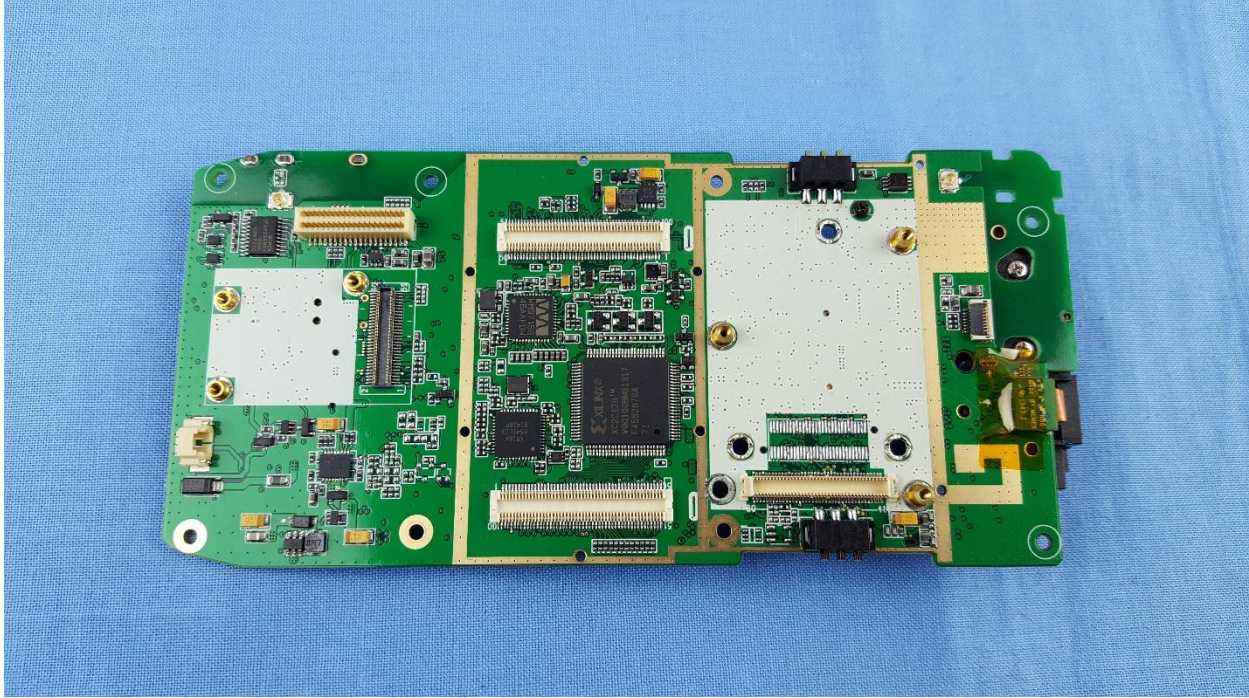
External LED Board



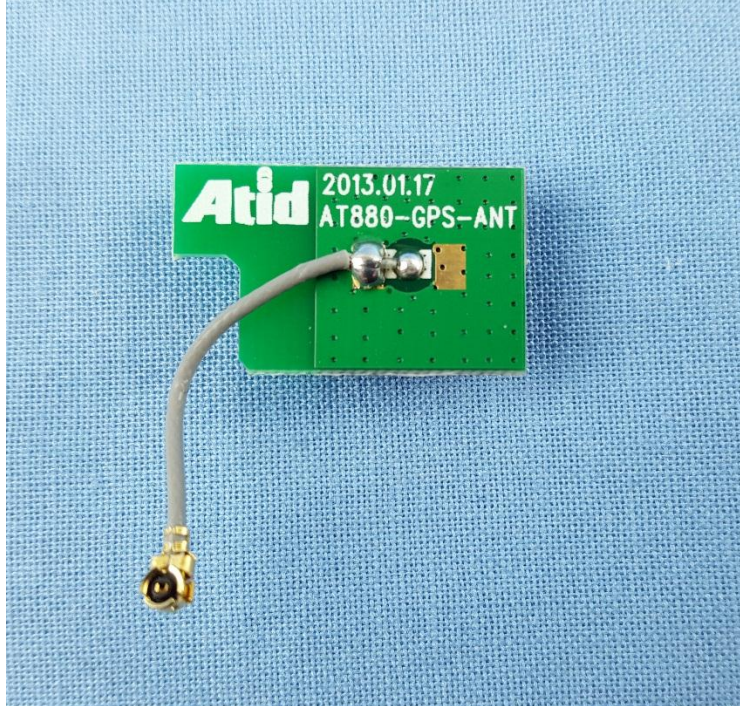
Front Housing



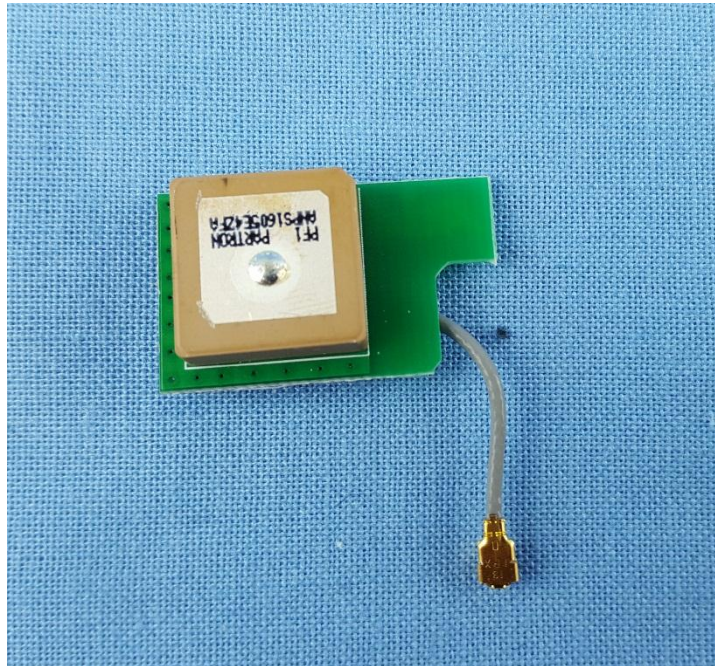
First PCB All components removed Bottom View



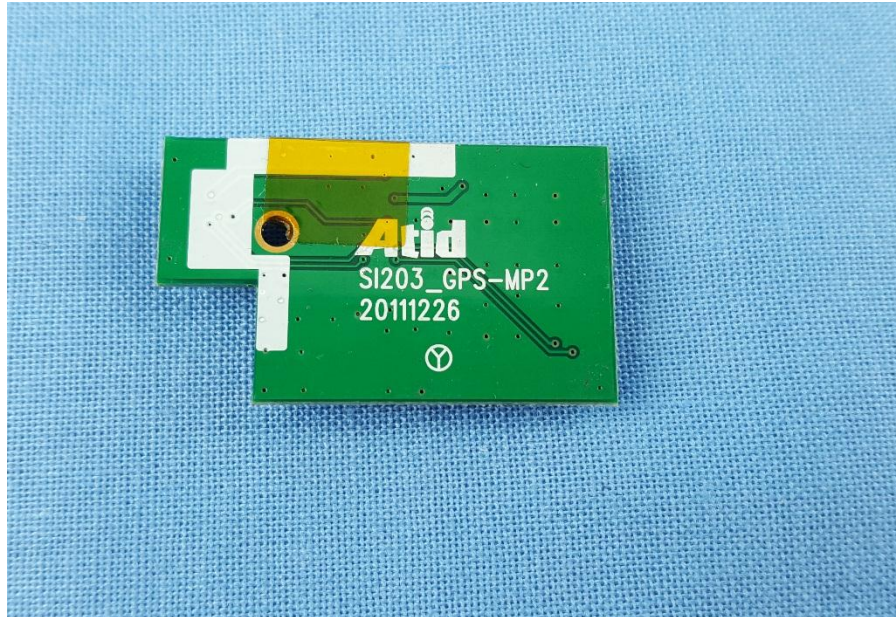
GPS Antenna Bottom



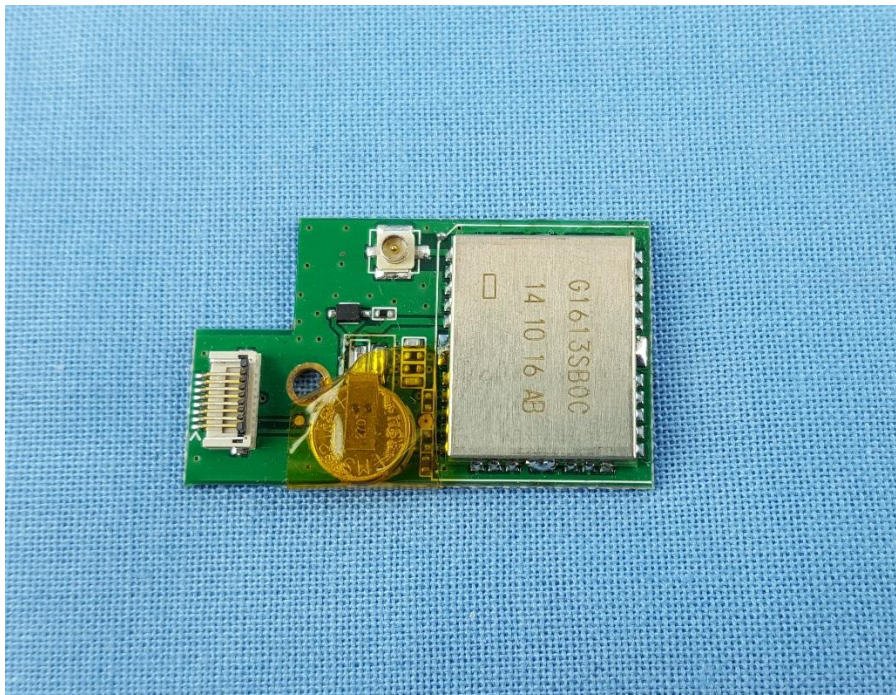
GPS Antenna Top



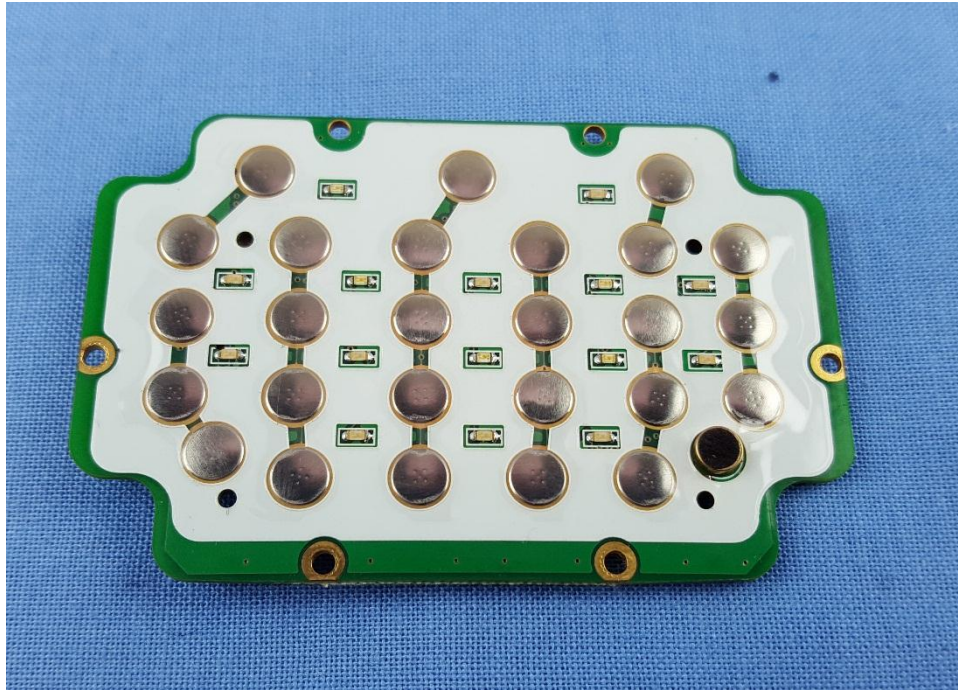
GPS Card Bottom



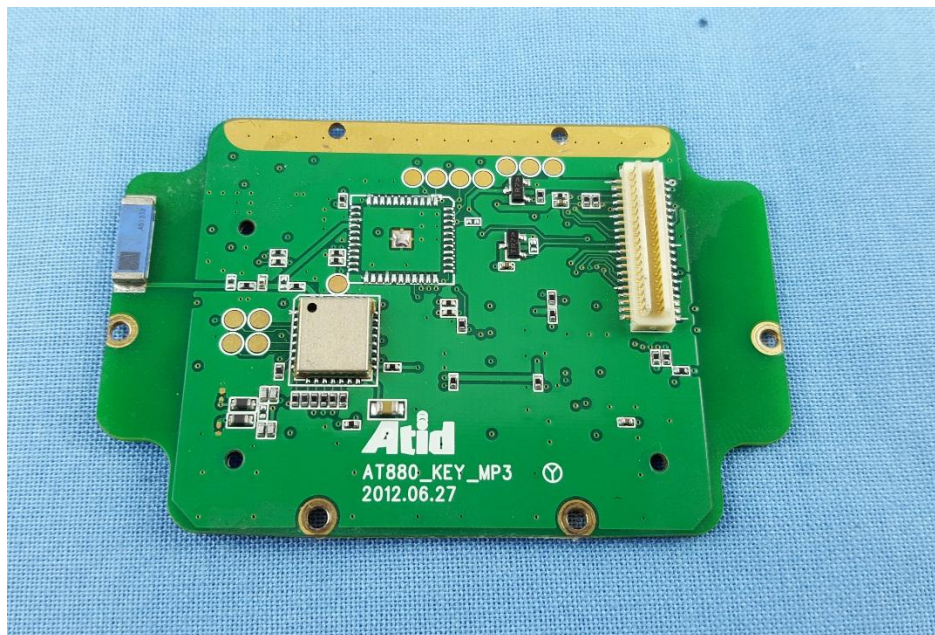
GPS Card Top



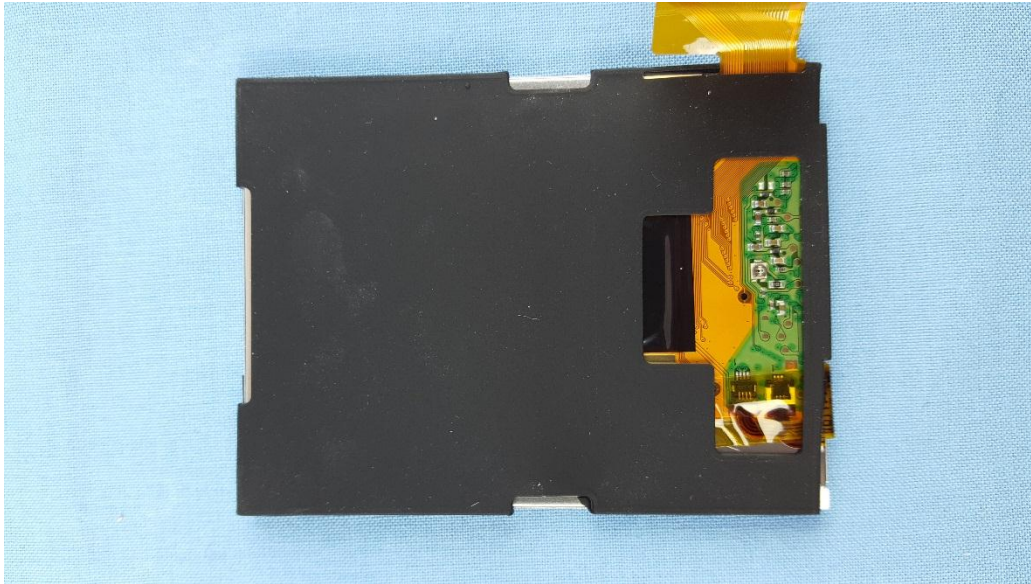
Keypad Board Bottom



Keypad Board Top



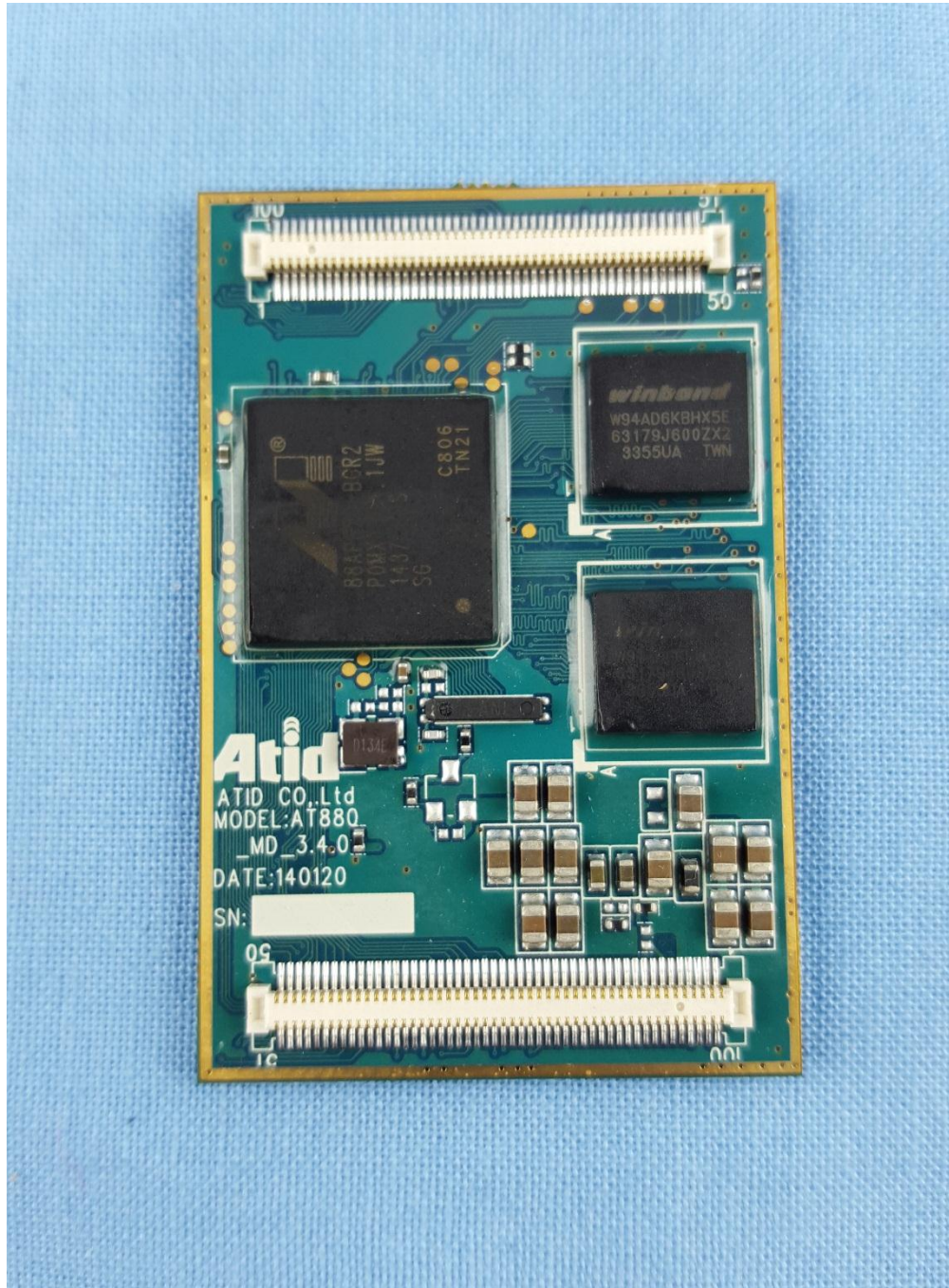
LCD Bottom



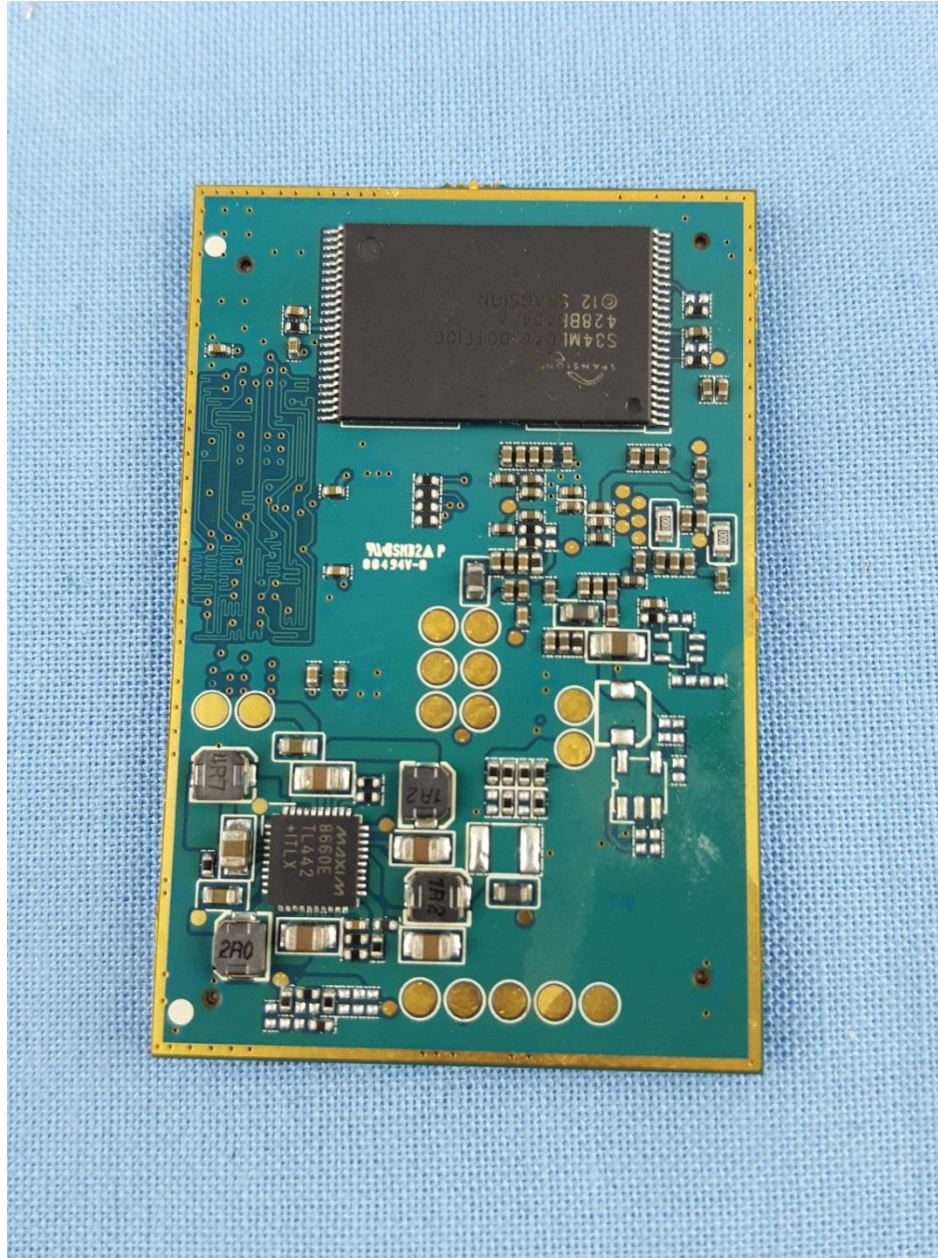
LCD Top



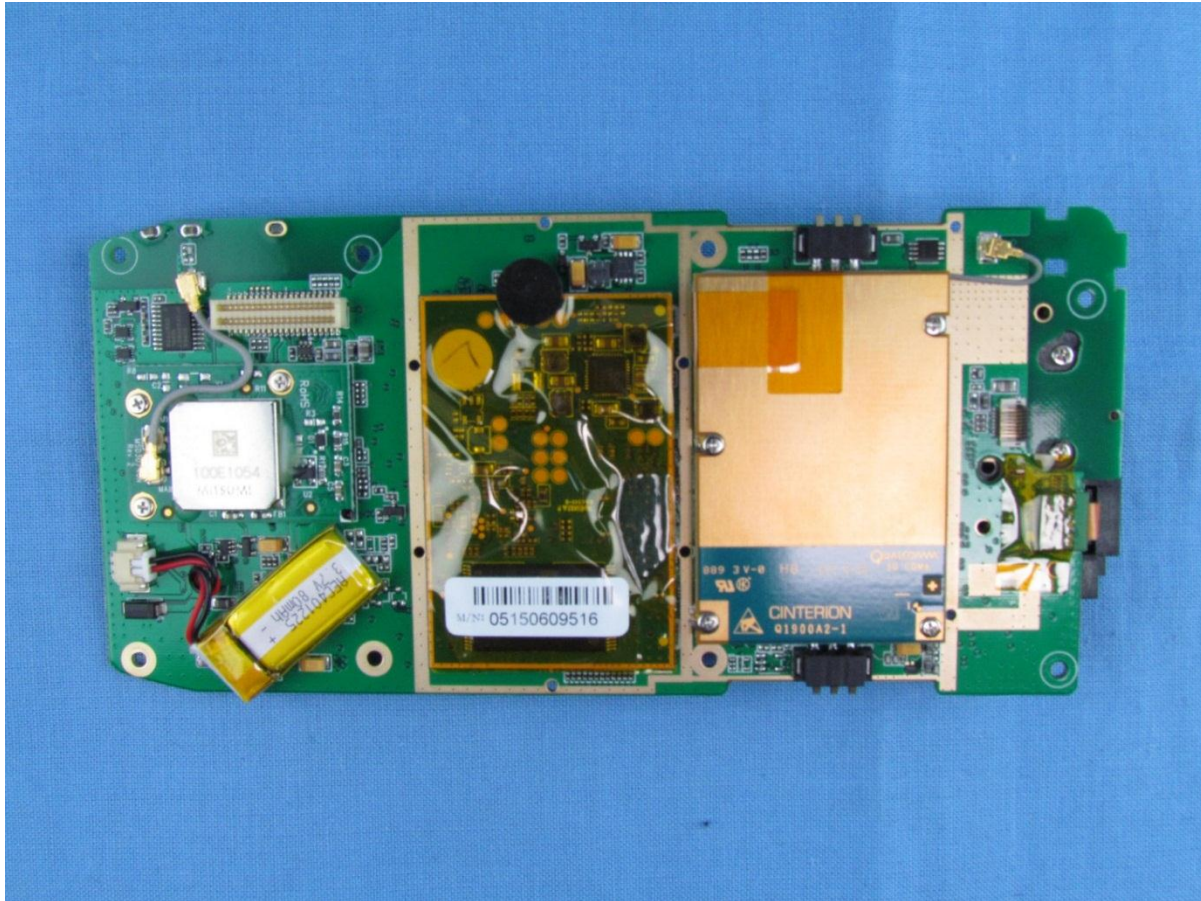
Middle Add on Card Bottom View



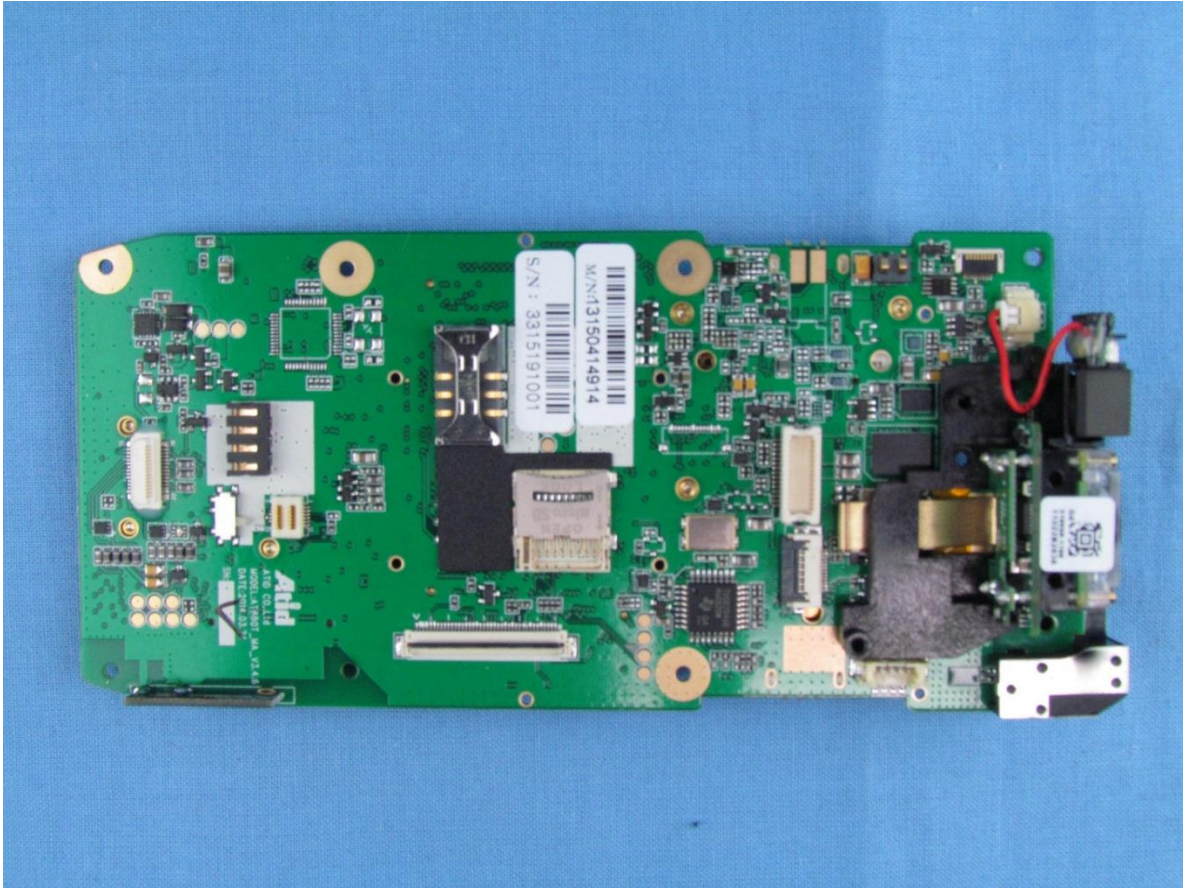
Middle Add On Card Top View



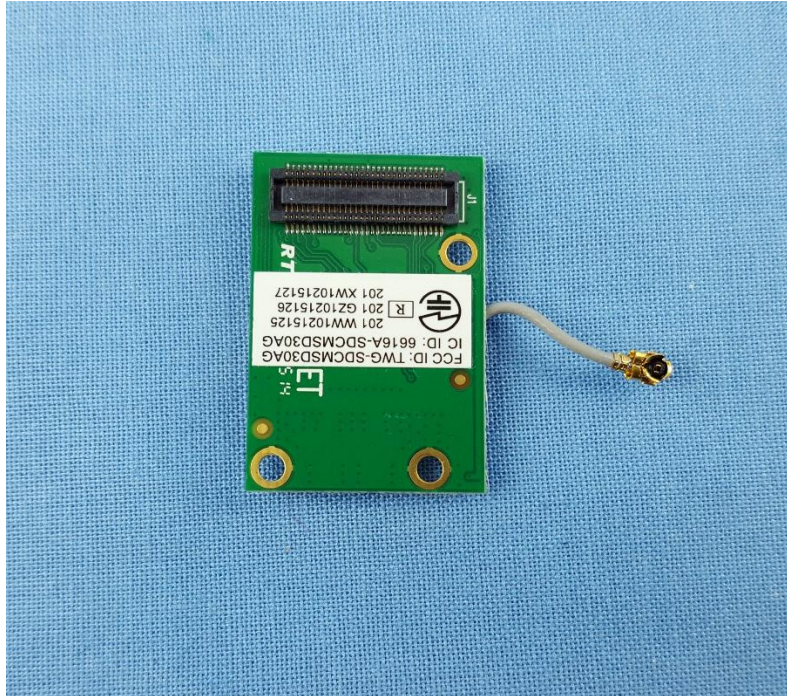
PCB Removed Bottom View



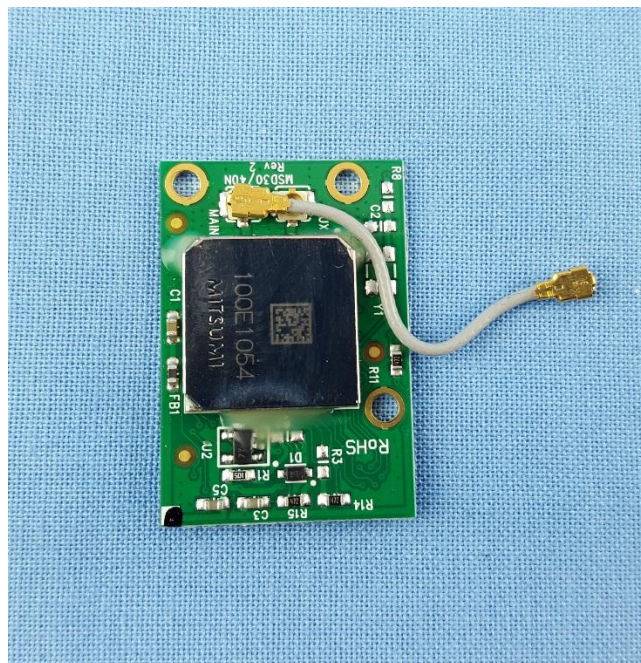
PCB Removed Top View



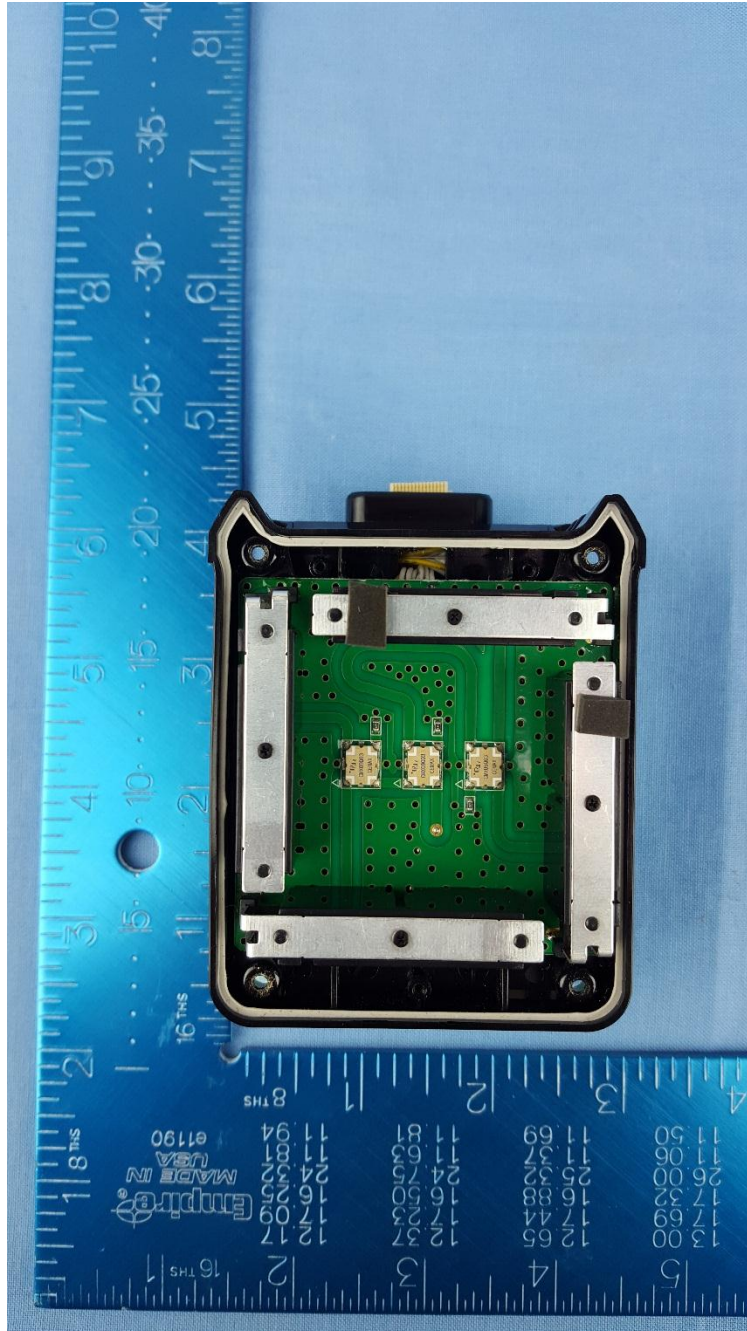
Radio Card Bottom



Radio Card Top

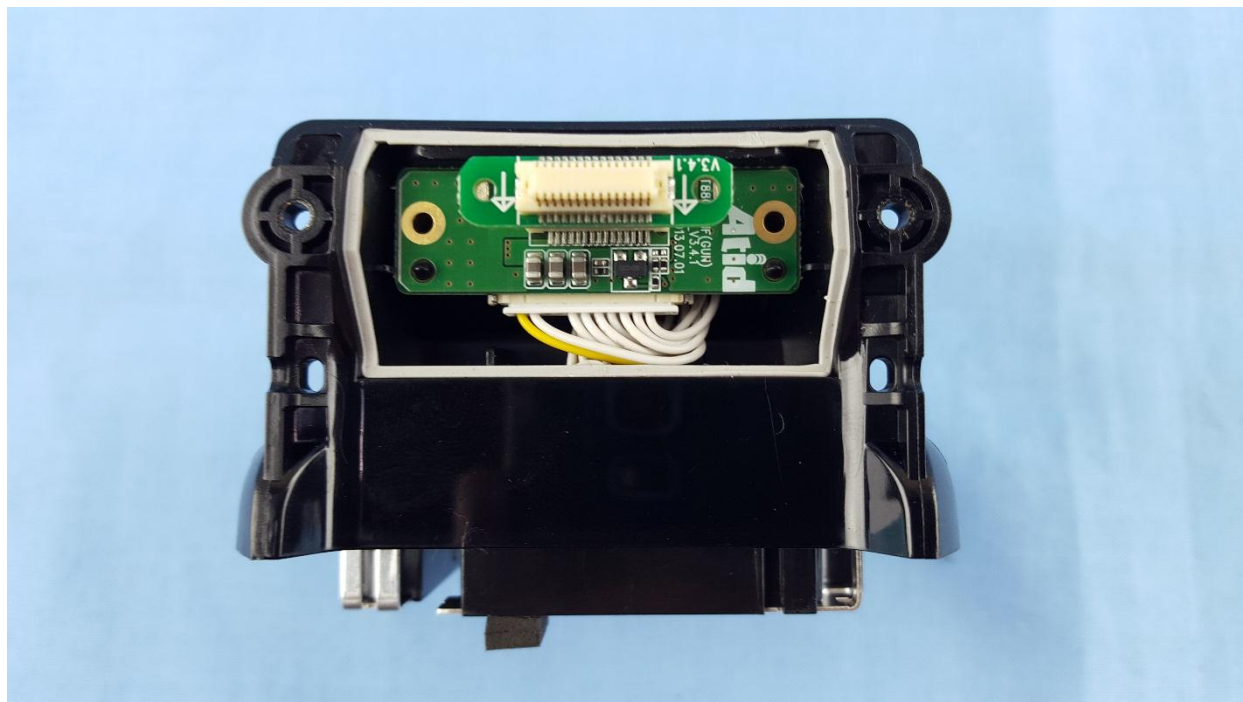


RFID Antenna

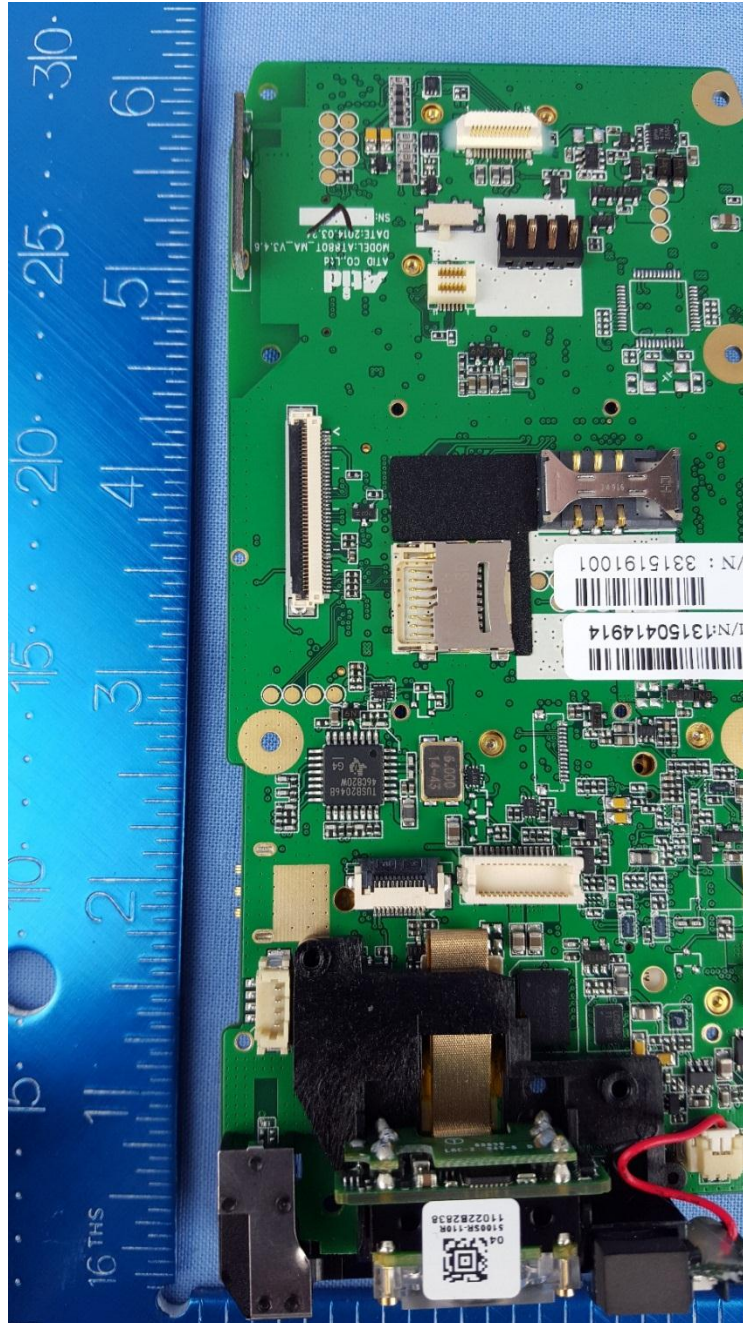


This test report may be reproduced in full only. The document may only be updated by MiCOM Labs personnel. All changes will be noted in the Document History section of the report.

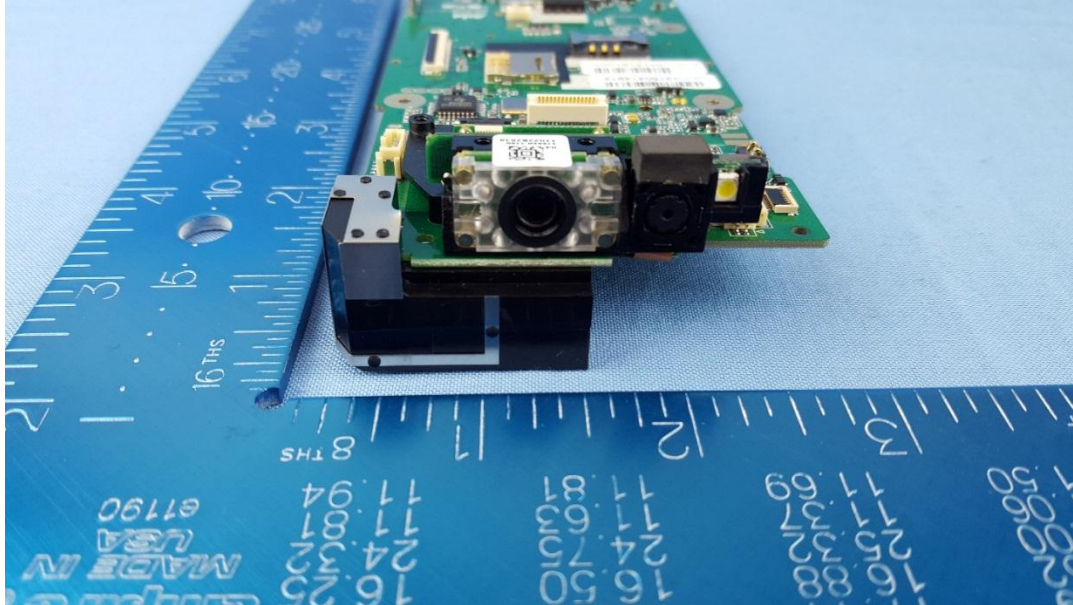
RFID Antenna Connector



WiFi Antenna



WWAN Antenna





575 Boulder Court
Pleasanton, California 94566, USA
Tel: +1 (925) 462 0304
Fax: +1 (925) 462 0306
www.micomlabs.com