



## WELCOME TO THE LAB

The Lab is where you'll find real people, developing really great products, in a real place called San Diego.

### PERSONAL TECH DONE BETTER



#### Designed for You

We actually listen to what you want and we're always looking for ways to make everything easier and better for you.



#### Lab Quality Sound

Choose from different settings and customize your sound style to match exactly what you're doing.



#### Surprisingly Awesome Value

We always pack in the most functionality and fun into every product at a truly accessible price.

## #yourkindoftech

Tech all about you

### WITH LOVE FROM THE LAB

We have lots of different ways to show we care.

#### GET STARTED + FREE GIFT

Product updates | How-to tips | FAQs & more

Go to [jlab.com/register](https://jlab.com/register) or [intl.jlab.com/register](https://intl.jlab.com/register) to unlock your customer benefits including a free gift.

Gift for US only. No APO/FPO/DPO addresses.

For support visit: [HELP.JLAB.COM](https://HELP.JLAB.COM)  
or [INTL.JLAB.COM/MANUALS](https://INTL.JLAB.COM/MANUALS)

### WE GOT YOUR BACK

We're obsessed with creating the best possible experience around owning our products. If you have any questions, concerns, or feedback, we're here for you. Contact a real human on our U.S.-based customer support team:

Website: [jlab.com/contact](https://jlab.com/contact)

Email: [support@jlab.com](mailto:support@jlab.com)

Phone U.S.: +1 (405) 445-7219

Phone U.K./EU: +44 (20) 8142 9361  
(Check hours [jlab.com/hours](https://jlab.com/hours))

Visit [jlab.com/warranty](https://jlab.com/warranty) to initiate a return or exchange.  
For international, visit [intl.jlab.com/warranty](https://intl.jlab.com/warranty) to initiate a return or exchange.

### LATEST AND GREATEST

Our team is constantly improving your product experience. This model may have new features or controls which are not detailed in this guide.

For the latest version of the manual,  
scan the QR code below.



DE Die vollständige Bedienungsanleitung ist online abrufbar unter [intl.jlab.com/manuals](https://intl.jlab.com/manuals)

FR Accédez au manuel complet du produit à l'adresse suivante: [intl.jlab.com/manuals](https://intl.jlab.com/manuals)

ES Acceda al manual completo del producto en [intl.jlab.com/manuals](https://intl.jlab.com/manuals)

PT Aceda ao manual completo do produto em [intl.jlab.com/manuals](https://intl.jlab.com/manuals)

IT È possibile consultare il manuale del prodotto alla pagina [intl.jlab.com/manuals](https://intl.jlab.com/manuals)

NL Toegang tot volledige producthandleiding op [intl.jlab.com/manuals](https://intl.jlab.com/manuals)



Distributed in U.K. by:  
JLab c/o Togo Limited  
21 Headlands Business Park, Ringwood,  
Hampshire BH24 3PB United Kingdom

EU Importer:  
JLab  
5927 Landau Ct.,  
Carlsbad, CA 92008, USA

FCC ID: 2AHYV-JBUDSSP  
IC: 21316-JBUDSSP

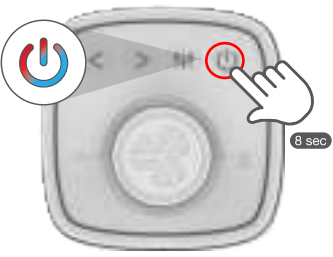



## JBUDS PARTY

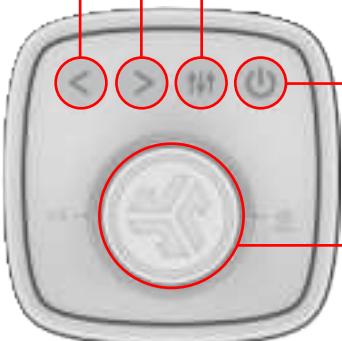
PORTABLE BLUETOOTH  
SPEAKER

## QUICK START GUIDE

## PAIR UP

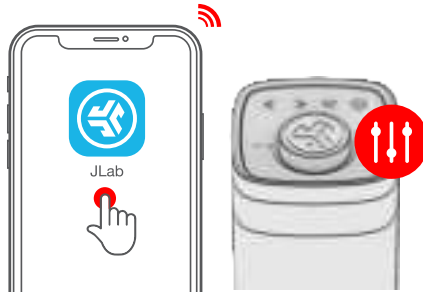
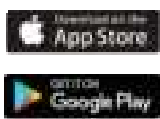
- 1** Press and hold button. Lights will flash **blue/red** to indicate pairing mode.  

- 2** Select JLab JBuds Party in your device settings to connect.  


## GO AHEAD, PRESS THE BUTTON

- EQ CHANGE:** 1x  
**TRACK FORWARD:** 1x  
**TRACK BACK:** 1x
- POWER ON:** PRESS HOLD 2s  
**POWER OFF:** PRESS HOLD 3s  
**LED CHANGE:** 1x (cycles 6 LED Animations)  
**PAIR NEW DEVICE:** When powered off **PRESS HOLD 8s**
- VOLUME:** ROTATE  
**PLAY/PAUSE:** 1x  
**LabSync:** **PRESS HOLD** (see LabSync page to connect JLab Party Speakers)
- 

## DOWNLOAD THE APP

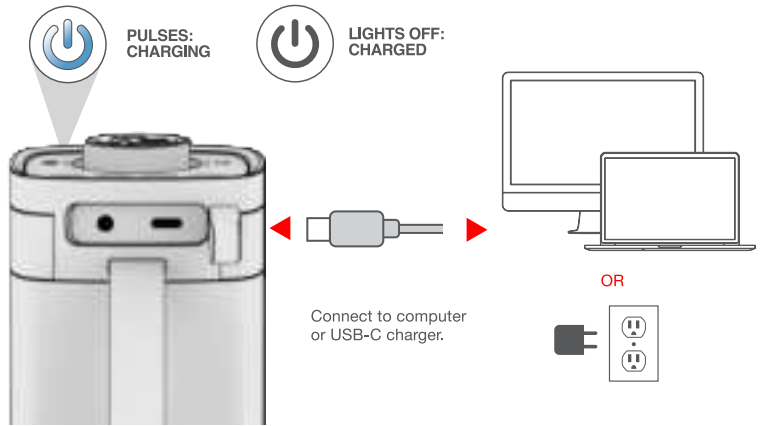
Customize the Sound, Lights, and Features.



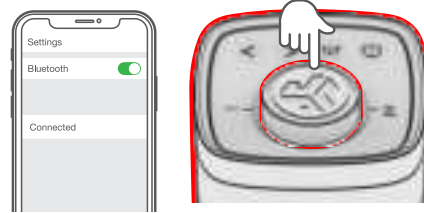
## QUICK TIPS

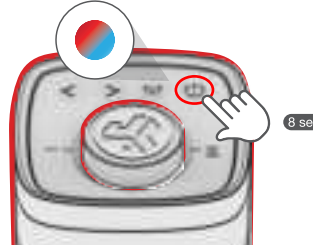
- JBuds Party is set to Eco-Mode by default. Lights will turn off when battery is less than 25% to conserve power.
- Turning off the lights will significantly improve playtime.
- JBuds Party will auto power off if no media is playing for 30 minutes.
- Download the JLab App to adjust the default settings.
- LabSync works with all JLab Pop Party, GO Party, JBuds Party, and Epic Party speakers.


## GET CHARGED



## LABSYNC (Cast to other JLab Party Speakers)

- 1** Connect **JBuds Party** to your device.  
Press Hold to enter LabSync. **JBuds Party** will say "LabSync"  


- 2** With your other **JLab Party Speaker(s)** turned off, **Press hold** power button until LEDs flash blue/red.  


- 3** Followed by entering LabSync on your other speaker(s).  


- 4** **Casting** and **Receiving**  
