

TEST REPORT

Product Name : QI2 3-IN-1 MAGNETIC WIRELESS CHARGING STAND
Brand Name : N/A
Model : MT7
Series Model : UD36, UD36L
FCC ID : 2AXTH-MT7
Applicant : **Shenzhen Caibo Technology Co.,Ltd**
Address : F4, Building 30, Fifth Industrial Zone, Huaide Cuigang Industrial Park, Fu Yong, Bao'an District, Shenzhen, Shenzhen, China
Manufacturer : **Shenzhen Caibo Technology Co.,Ltd**
Address : F4, Building 30, Fifth Industrial Zone, Huaide Cuigang Industrial Park, Fu Yong, Bao'an District, Shenzhen, Shenzhen, China
Standard(s) : FCC CFR Title 47 Part 15 Subpart C
Date of Receipt : Apr. 01, 2025
Date of Test : Apr. 02, 2025~ Apr. 17, 2025
Issued Date : Apr. 18, 2025

Issued By: **Guangdong Asia Hongke Test Technology Limited**
B1/F, Building 11, Junfeng Industrial Park, Chongqing Road, Heping Community, Fuhai Street,
Bao'an District, Shenzhen, Guangdong, China
Tel.: +86 0755-230967639 Fax.: +86 0755-230967639

Reviewed by:

Leon Yi

Leon.yi

Approved by:

Sean She

Sean She



Note: This device has been tested and found to comply with the standard(s) listed, this test report merely corresponds to the test sample. It is not permitted to copy extracts of these test result without the written permission of the test laboratory. This report shall not be reproduced except in full, without the written approval of Guangdong Asia Hongke Test Technology Limited. If there is a need to alter or revise this document, the right belongs to Guangdong Asia Hongke Test Technology Limited, and it should give a prior written notice of the revision document. This test report must not be used by the client to claim product endorsement.

Guangdong Asia Hongke Test Technology Limited

B1/F, Building 11, Junfeng Industrial Park, Chongqing Road, Heping Community, Fuhai Street, Bao'an District, Shenzhen, Guangdong, China.



Report Revise Record

Report Version	Issued Date	Notes
M1	Apr. 18, 2025	Initial Release

Contents

1	TEST SUMMARY	4
1.1	TEST STANDARDS	4
1.2	TEST SUMMARY	4
1.3	TEST FACILITY	5
1.4	MEASUREMENT UNCERTAINTY	5
2	GENGENERAL INFORMATION	6
2.1	ENVIRONMENTAL CONDITIONS	6
2.2	GENERAL DESCRIPTION OF EUT	6
2.3	DESCRIPTION OF THE TEST MODE	7
2.4	SPECIAL ACCESSORIES	7
2.5	EQUIPMENT LIST FOR THE TEST	8
3	TEST CONDITIONS AND RESULTS	9
3.1	CONDUCTED EMISSIONS TEST	9
3.2	RADIATED EMISSIONS.....	12
3.3	20dB BANDWIDTH.....	20
3.4	ANTENNA REQUIREMENT.....	23
4	TEST SETUP PHOTOGRAPHS OF EUT	24
5	PHOTOS OF THE EUT.....	25

1 TEST SUMMARY

1.1 Test Standards

The tests were performed according to following standards:

[FCC Rules Part 15.207,15.209, 15.215\(c\)](#)

[ANSI C63.10: 2013](#): American National Standard for Testing Unlicensed Wireless Devices

1.2 Test Summary

Test Item	Section in CFR 47	Test Result
Electric Field Radiated Emissions	FCC Part 15 C (Section15.209)	PASS
20dB Bandwidth/99% Bandwidth	FCC Part 15 C (Section15.215(c))	PASS
AC Power Line Conducted Emission	FCC Part 15 C (Section15.207)	PASS
Antenna Requirement	FCC Part 15 C (Section15.203	PASS

1.3 Test Facility

Test Laboratory:

Guangdong Asia Hongke Test Technology Limited

B1/F, Building 11, Junfeng Industrial Park, Chongqing Road, Heping Community, Fuhai Street, Bao'an District, Shenzhen, Guangdong, China

The test facility is recognized, certified or accredited by the following organizations:

FCC-Registration No.: 251906 Designation Number: CN1376

Guangdong Asia Hongke Test Technology Limited has been registered and fully described in a report filed with the (FCC) Federal Communications Commission. The acceptance letter from the FCC is maintained in our files.

IC —Registration No.: 31737 CAB identifier: CN0165

The 3m Semi-anechoic chamber of Guangdong Asia Hongke Test Technology Limited has been registered by Certification and Engineering Bureau of Industry Canada for radio equipment testing with Registration No.: 31737

A2LA-Lab Cert. No.: 7133.01

Guangdong Asia Hongke Test Technology Limited has been accredited by A2LA for technical competence in the field of electrical testing, and proved to be in compliance with ISO/IEC 17025: 2017 General Requirements for the Competence of Testing and Calibration Laboratories and any additional program requirements in the identified field of testing.

1.4 Measurement uncertainty

The data and results referenced in this document are true and accurate. The reader is cautioned that there may be errors within the calibration limits of the equipment and facilities. The measurement uncertainty was calculated for all measurements listed in this test report according to CISPR 16 - 4 "Specification for radio disturbance and immunity measuring apparatus and methods – Part 4: Uncertainty in EMC Measurements" and is documented in the Guangdong Asia Hongke Test Technology Limited's quality system according to DIN EN ISO/IEC 17025. Furthermore, component and process variability of devices similar to that tested may result in additional deviation. The manufacturer has the sole responsibility of continued compliance of the device.

Hereafter the best measurement capability for Asia Hongke laboratory is reported:

Test	Measurement Uncertainty	Notes
Power Line Conducted Emission	9KHz~30MHz ± 1.20 dB	(1)
Radiated Emission	9KHz~30MHz ± 3.10 dB	(1)
Radiated Emission	30MHz~1GHz ± 3.75 dB	(1)
Radiated Emission	1GHz~18GHz ± 3.88 dB	(1)
Radiated Emission	18GHz~40GHz ± 3.88 dB	(1)
RF power, conducted	30MHz~6GHz ± 0.16 dB	(1)
RF power density, conducted	± 0.24 dB	(1)
Spurious emissions, conducted	± 0.21 dB	(1)
Temperature	$\pm 1^{\circ}\text{C}$	(1)
Humidity	$\pm 3\%$	(1)
DC and low frequency voltages	$\pm 1.5\%$	(1)
Time	$\pm 2\%$	(1)
Duty cycle	$\pm 2\%$	(1)

The report uncertainty of measurement $y \pm U$, where expanded uncertainty U is based on a standard uncertainty Multiplied by a coverage factor of $k=2$, providing a level of confidence of approximately 95%

2 GENGGENERAL INFORMATION

2.1 Environmental conditions

During the measurement the environmental conditions were within the listed ranges:

Normal Temperature:	25°C
Relative Humidity:	55 %
Air Pressure:	101 kPa

2.2 General Description of EUT

Product Name:	QI2 3-IN-1 MAGNETIC WIRELESS CHARGING STAND
Model/Type reference:	MT7
Serial Model:	UD36, UD36L
Power Ratings:	Input: 9V3A / 12V3A Phone Wireless Output: 5W/7.5W/10W/15W(MAX) Earphone Wireless Output: 5W(MAX) Apple Watch Wireless Output: 5W(MAX)
Hardware Version:	N/A
Software Version:	N/A
Sample(s) Status:	AiTSZ-250401009-1(Normal sample) AiTSZ-250401009-2(Engineer sample)
Wireless Charger:	
Operation frequency:	Coil1: For Phone: 110kHz-205kHz, 360kHz Coil2: For Earphone: 110kHz-205kHz Coil3: For Watch: 300kHz-350kHz
Modulation Technology:	ASK
Antenna Type:	Loop coil antenna
Antenna gain:	0dBi
Remark: The above DUT's information was declared by manufacturer. For more detailed features description, please refer to the manufacturer's specifications or the User's Manual.	

2.3 Description of the test mode

Equipment under test was operated during the measurement under the following conditions:

☒ Charging and communication mode

Test Modes:		
Mode 1	AC Adapter + EUT + Earphone + Watch + Phone (Battery Status: < 1%)	Record
Mode 2	AC Adapter + EUT + Earphone + Watch + Phone (Battery Status: < 50%)	Pre-tested
Mode 3	AC Adapter + EUT + Earphone + Watch + Phone (Battery Status: < 99%)	Pre-tested
Mode 4	AC Adapter + EUT + Earphone+ Phone (Battery Status: < 1%)	Pre-tested
Mode 5	AC Adapter + EUT + Earphone+ Phone (Battery Status: < 50%)	Pre-tested
Mode 6	AC Adapter + EUT + Earphone+ Phone (Battery Status: < 99%)	Pre-tested
Mode 7	AC Adapter + EUT + Watch + Phone (Battery Status: < 1%)	Pre-tested
Mode 8	AC Adapter + EUT + Watch + Phone (Battery Status: < 50%)	Pre-tested
Mode 9	AC Adapter + EUT + Watch + Phone (Battery Status: < 99%)	Pre-tested
Mode 11	AC Adapter + EUT + Earphone + Watch	Pre-tested
Mode 12	AC Adapter + EUT + Earphone	Pre-tested
Mode 13	AC Adapter + EUT + Watch	Pre-tested
Mode 14	AC Adapter + EUT+ Phone (Battery Status: < 1%)	Pre-tested
Mode 15	AC Adapter + EUT+ Phone (Battery Status: < 50%)	Pre-tested
Mode 16	AC Adapter + EUT+ Phone (Battery Status: < 99%)	Pre-tested
Mode 17	Stand-by mode.	Pre-tested
Note: All test modes were pre-tested, but we only recorded the worst case in this report.		

2.4 Special Accessories

Follow auxiliary equipment(s) test with EUT that provided by the manufacturer or laboratory is listed as follow:

Description	Manufacturer	Model	Serial No.	Provided by	Other
Phone	YBZ	15W	/	Test lab	EPP 15W
Phone	Apple	Iphone 14	/	Test lab	MPP 15W
Watch	Apple	S6	/	Test lab	5W
Earphone	PocBuds	K6	/	Test lab	5W
Adapter	Aoda	A839-200150C-US1	/	Test lab	30W

2.5 Equipment List for the Test

No	Test Equipment	Manufacturer	Model No	Serial No	Cal. Date	Cal. Due Date
1	EMI Measuring Receiver	R&S	ESR	101160	2024.09.25	2025.09.24
2	Spectrum Analyzer	R&S	FSV40	101470	2024.09.23	2025.09.22
3	Low Noise Pre Amplifier	SCHWARZBECK	BBV 9745	00282	2024.09.25	2025.09.24
4	Low Noise Pre Amplifier	CESHENG	CSKJLNA231016A	CSKJLNA231016A	2024.09.25	2025.09.24
5	Passive Loop	ETS	6512	00165355	2024.08.29	2027.08.28
6	TRILOG Super Broadband test Antenna	SCHWARZBECK	VULB9168	01434	2024.08.29	2027.08.28
7	Broadband Horn Antenna	Schwarzbeck	BBHA 9120D	452	2024.08.29	2027.08.28
8	Horn Antenna 15-40GHz	SCHWARZBECK	BBHA9170	BBHA9170367	2024.08.28	2027.08.27
9	6dB Attenuator	JFW	50FPE-006	4360846-949-1	2024.09.24	2025.09.23
10	EMI Test Receiver	R&S	ESPI	100771	2024.09.25	2025.09.24
11	LISN	R&S	NNLK 8129	8130179	2024.09.24	2025.09.23
12	LISN	R&S	ESH3-Z5	892785/016	2024.09.23	2025.09.22
13	Pulse Limiter	R&S	ESH3-Z2	102789	2024.09.24	2025.09.23
14	RF Automatic Test system	TST	TSTPASS	21033016	2024.09.25	2025.09.24
15	Vector Signal Generator	Agilent	N5182A	MY50143009	2024.09.25	2025.09.24
16	Analog signal generator	Agilent	E8257	MY51554256	2024.09.25	2025.09.24
17	Spectrum Analyzer	Agilent	N9020A	MY51289843	2024.09.25	2025.09.24
18	Spectrum Analyzer	Agilent	N9020A	MY53421570	2024.09.25	2025.09.24
19	Power Sensor	Agilent	8481A	MY41097697	2024.09.25	2025.09.24
20	Wideband Radio communication tester	R&S	CMW500	1201.0002K50	2024.09.24	2025.09.23
21	DC power supply	ZHAOXIN	RXN-305D-2	28070002559	2024.09.24	2025.09.23
22	RE Software	EZ	EZ-EMC_RE	Ver.AIT-03A	N/A	N/A
23	CE Software	EZ	EZ-EMC_CE	Ver.AIT-03A	N/A	N/A
24	RF Software	TST	TSTPASS	Version 2.0	N/A	N/A
25	RF Software	cesheng	WCS-WCN	Version 2024.6.20	N/A	N/A
26	temporary antenna connector(Note)	NTS	R001	N/A	N/A	N/A

Note: The temporary antenna connector is soldered on the PCB board in order to perform conducted tests and this temporary antenna connector is listed in the equipment list.

3 TEST CONDITIONS AND RESULTS

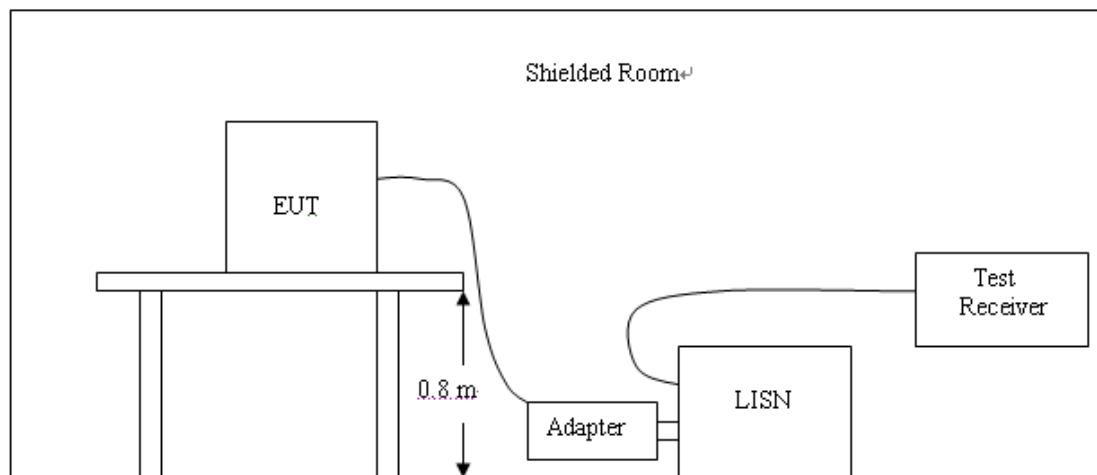
3.1 Conducted Emissions Test

LIMIT

Frequency range (MHz)	Limit (dBuV)	
	Quasi-peak	Average
0.15-0.5	66 to 56*	56 to 46*
0.5-5	56	46
5-30	60	50

* Decreases with the logarithm of the frequency.

TEST CONFIGURATION



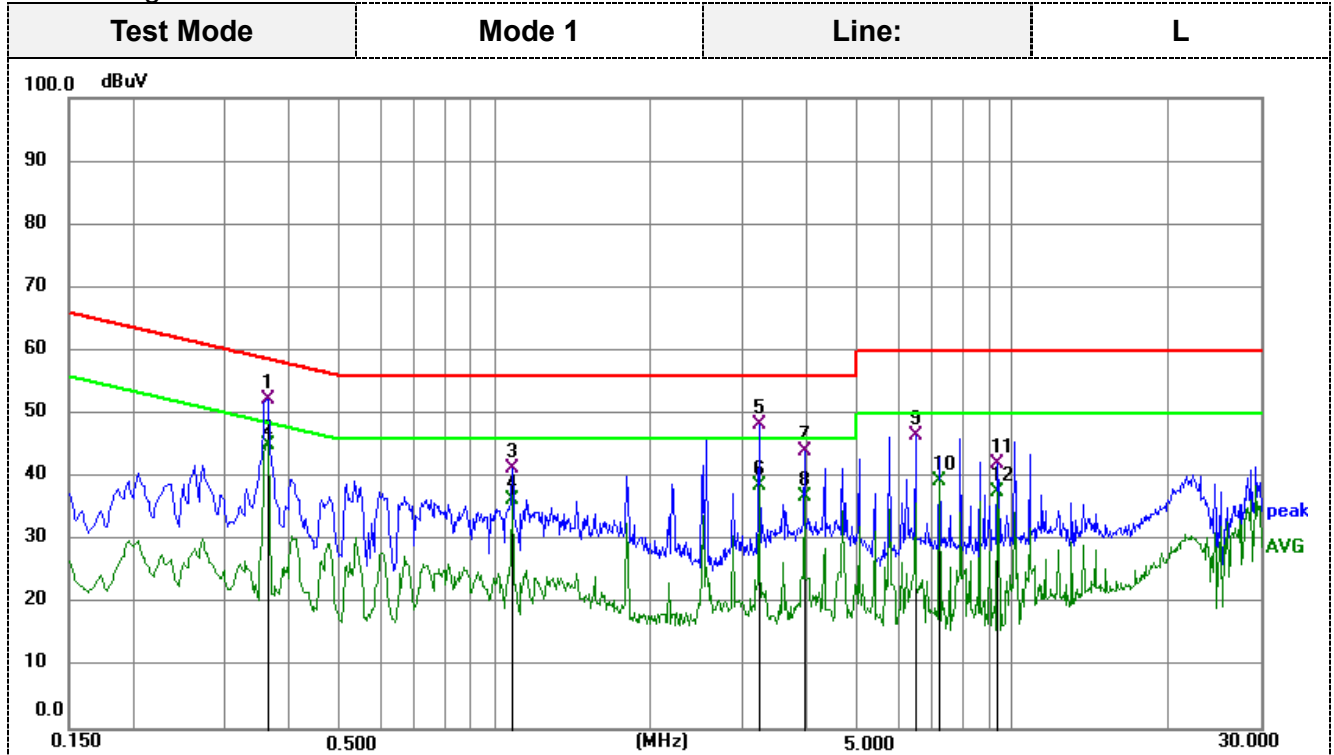
TEST PROCEDURE

1. The equipment was set up as per the test configuration to simulate typical actual usage per the user's manual. The EUT is a tabletop system; a wooden table with a height of 0.8 meters is used and is placed on the ground plane as per ANSI C63.10:2013.
2. Support equipment, if needed, was placed as per ANSI C63.10:2013.
3. All I/O cables were positioned to simulate typical actual usage as per ANSI C63.10:2013.
4. The adapter received AC120V/60Hz power through a Line Impedance Stabilization Network (LISN) which supplied power source and was grounded to the ground plane.
5. All support equipments received AC power from a second LISN, if any.
6. The EUT test program was started. Emissions were measured on each current carrying line of the EUT using a spectrum Analyzer / Receiver connected to the LISN powering the EUT. The LISN has two monitoring points: Line 1 (Hot Side) and Line 2 (Neutral Side). Two scans were taken: one with Line 1 connected to Analyzer / Receiver and Line 2 connected to a 50 ohm load; the second scan had Line 1 connected to a 50 ohm load and Line 2 connected to the Analyzer / Receiver.
7. Analyzer / Receiver scanned from 150 KHz to 30MHz for emissions in each of the test modes.
8. During the above scans, the emissions were maximized by cable manipulation.

TEST RESULTS

Remark:

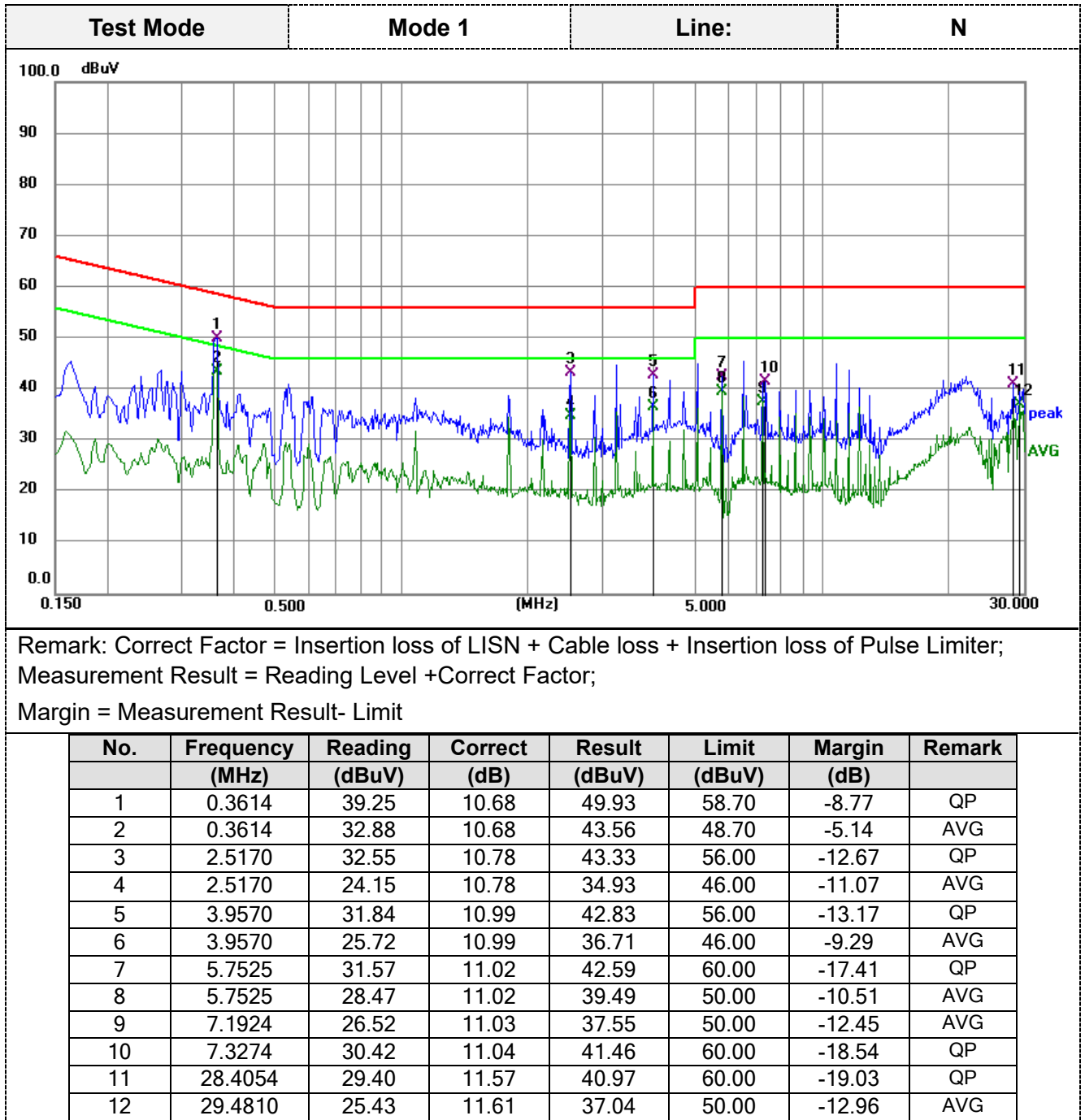
- Both 120 VAC, 50/60 Hz and 240 VAC, 50/60 Hz power supply have been tested, only the worst result of 120 VAC, 60 Hz was reported as below:
- Test phone coil can be configured working on EPP and MPP mode, only the worst result with phone coil working at EPP mode recorded as below:



Remark: Correct Factor = Insertion loss of LISN + Cable loss + Insertion loss of Pulse Limiter;
Measurement Result = Reading Level + Correct Factor;

Margin = Measurement Result - Limit

No.	Frequency (MHz)	Reading (dBuV)	Correct (dB)	Result (dBuV)	Limit (dBuV)	Margin (dB)	Remark
1	0.3614	41.49	10.69	52.18	58.70	-6.52	QP
2	0.3614	34.28	10.69	44.97	48.70	-3.73	AVG
3	1.0770	30.63	10.66	41.29	56.00	-14.71	QP
4	1.0770	25.57	10.66	36.23	46.00	-9.77	AVG
5	3.2370	37.41	10.83	48.24	56.00	-7.76	QP
6	3.2370	27.77	10.83	38.60	46.00	-7.40	AVG
7	3.9570	33.09	11.00	44.09	56.00	-11.91	QP
8	3.9570	25.92	11.00	36.92	46.00	-9.08	AVG
9	6.4725	35.56	11.03	46.59	60.00	-13.41	QP
10	7.1924	28.27	11.05	39.32	50.00	-10.68	AVG
11	9.3480	31.04	11.00	42.04	60.00	-17.96	QP
12	9.3480	26.52	11.00	37.52	50.00	-12.48	AVG



3.2 Radiated Emissions

Limit

For intentional device, according to § 15.209(a), the general requirement of field strength of radiated emission out of authorized band shall not exceed the following table at a 3 meters measurement distance.

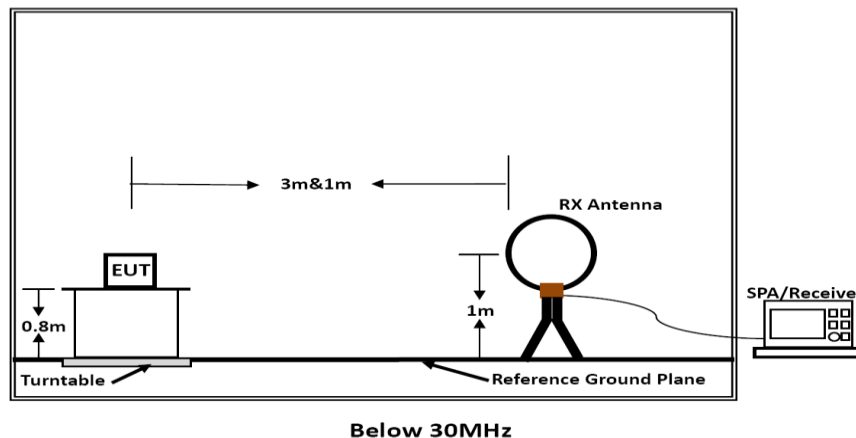
In addition, radiated emissions which fall in the restricted bands, as defined in §15.205(a), must also comply with the radiated emission limits specified in §15.209(a)

Radiated emission limits

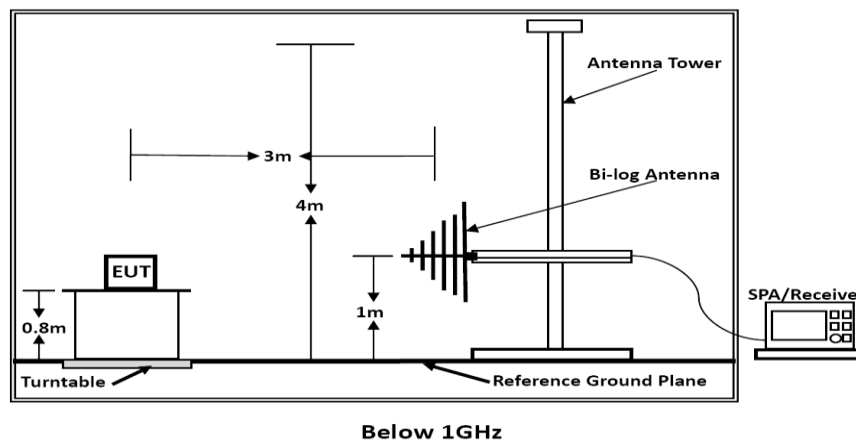
Frequency (MHz)	Distance (Meters)	Radiated (dBμV/m)	Radiated (μV/m)
0.009-0.49	3	$20\log(2400/F(\text{KHz}))+40\log(300/3)$	$2400/F(\text{KHz})$
0.49-1.705	3	$20\log(24000/F(\text{KHz}))+40\log(30/3)$	$24000/F(\text{KHz})$
1.705-30	3	$20\log(30)+40\log(30/3)$	30
30-88	3	40.0	100
88-216	3	43.5	150
216-960	3	46.0	200
Above 960	3	54.0	500

TEST CONFIGURATION

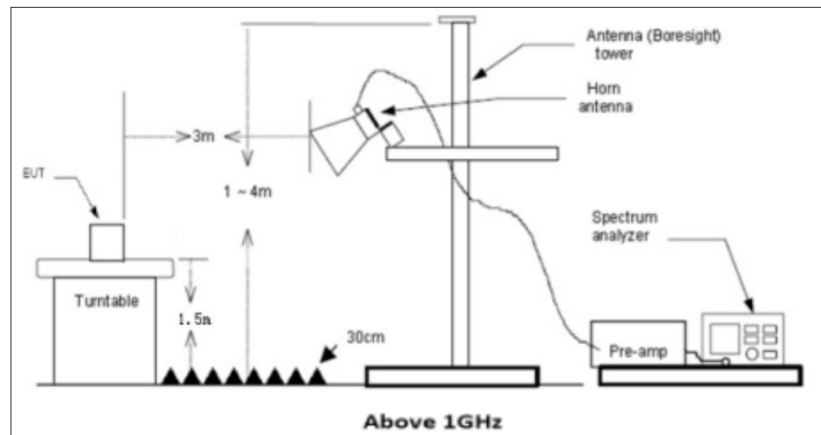
(A) Radiated Emission Test Set-Up, Frequency Below 30MHz



(B) Radiated Emission Test Set-Up, Frequency below 1000MHz



(C) Radiated Emission Test Set-Up, Frequency above 1000MHz



Test Procedure

- Below 1GHz measurement the EUT is placed on a turntable which is 0.8m above ground plane, and above 1GHz measurement EUT was placed on a low permittivity and low loss tangent turn table which is 1.5m above ground plane.
- Maximum procedure was performed by raising the receiving antenna from 1m to 4m and rotating the turn table from 0°C to 360°C to acquire the highest emissions from EUT
- And also, each emission was to be maximized by changing the polarization of receiving antenna both horizontal and vertical.
- Repeat above procedures until all frequency measurements have been completed.
- Radiated emission test frequency band from 9KHz to 1000MHz.
- The distance between test antenna and EUT as following table states:

Test Frequency range	Test Antenna Type	Test Distance
9KHz-30MHz	Active Loop Antenna	3
30MHz-1GHz	Bilog Antenna	3

- Setting test receiver/spectrum as following table states:

Test Frequency range	Test Receiver/Spectrum Setting	Detector
9KHz-150KHz	RBW=200Hz/VBW=3KHz, Sweep time=Auto	QP
150KHz-30MHz	RBW=9KHz/VBW=100KHz, Sweep time=Auto	QP
30MHz-1GHz	RBW=120KHz/VBW=1000KHz, Sweep time=Auto	QP

TEST RESULTS

Remark:

All test modes described in section 2.3 has been tested, only the worst result of Mode 1 and phone coil configured working on EPP mode is recorded as below:

For 9KHz-150KHz

(Phone Frequency:110-205KHz, Earphone Frequency:110-205KHz, Watch Frequency:300-350KHz)



Remark:

Emission Level = Reading + Factor;

Factor = Antenna Factor + Cable Loss;

Margin= Emission Level - Limit.

No.	Frequency (MHz)	Reading (dBuV)	Factor (dB/m)	Level (dBuV/m)	Limit (dBuV/m)	Margin (dB)	Det.
1	0.0177	35.89	20.94	56.83	122.65	-65.82	QP
2	0.0240	32.78	21.04	53.82	120.00	-66.18	QP
3	0.0412	31.41	22.07	53.48	115.31	-61.83	QP
4	0.0734	30.62	22.68	53.30	110.29	-56.99	QP
5	0.1165	52.77	22.23	75.00	106.28	-31.28	QP
6	0.1481	53.08	21.92	75.00	104.19	-29.19	QP

For 150KHz-30MHz

(Phone Frequency:110-205KHz, Earphone Frequency:110-205KHz, Watch Frequency:300-350KHz)



Remark:

Emission Level = Reading + Factor;

Factor = Antenna Factor + Cable Loss;

Margin= Emission Level - Limit.

No.	Frequency (MHz)	Reading (dBuV)	Factor (dB/m)	Level (dBuV/m)	Limit (dBuV/m)	Margin (dB)	Det.
1	0.3265	43.48	21.52	65.00	97.33	-32.33	QP
2	0.5823	28.06	22.03	50.09	72.30	-22.21	QP
3	1.8980	24.18	22.42	46.60	69.54	-22.94	QP
4	3.3456	21.17	22.70	43.87	69.54	-25.67	QP
5	7.7278	20.61	22.92	43.53	69.54	-26.01	QP
6	20.4850	18.98	26.22	45.20	69.54	-24.34	QP

For 9KHz-150KHz

(Phone Frequency:360KHz, Earphone Frequency:110-205KHz, Watch Frequency:300-350KHz)



Remark:

Emission Level = Reading + Factor;

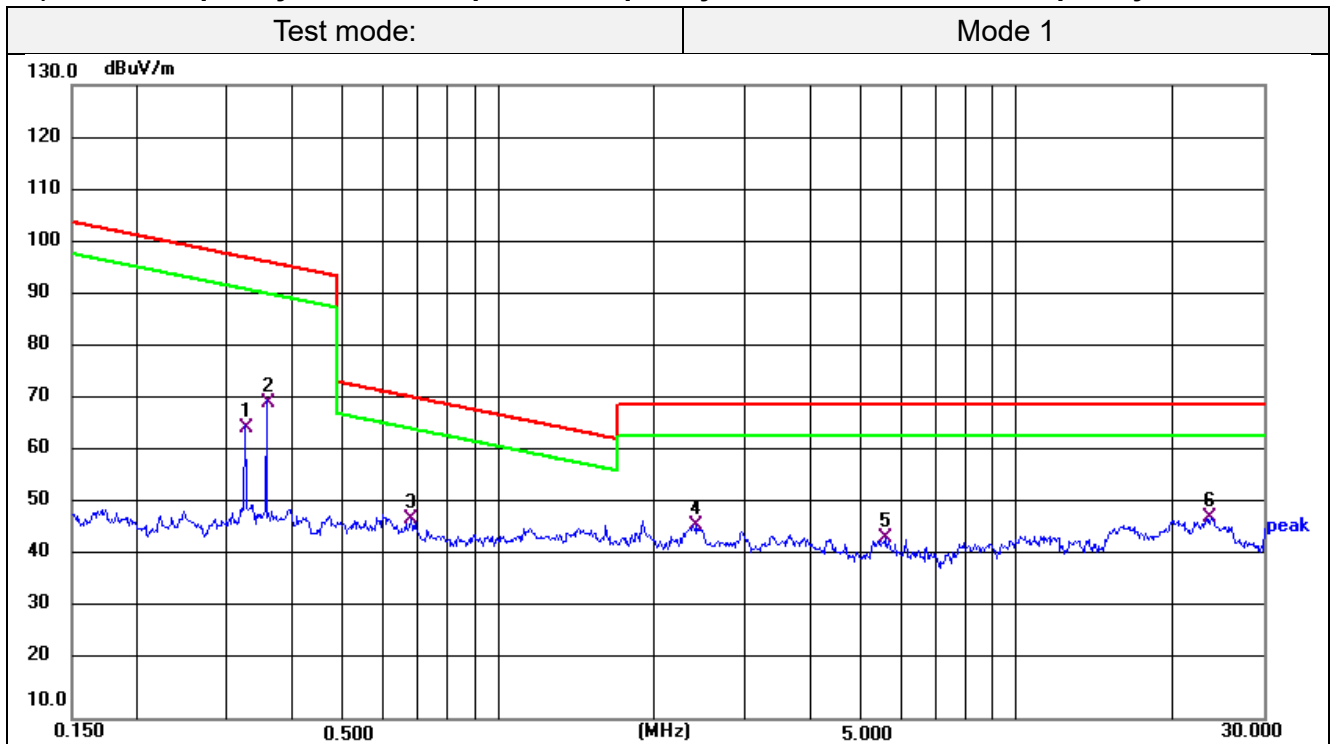
Factor = Antenna Factor + Cable Loss;

Margin= Emission Level - Limit.

No.	Frequency (MHz)	Reading (dBuV)	Factor (dB/m)	Level (dBuV/m)	Limit (dBuV/m)	Margin (dB)	Det.
1	0.0134	35.79	21.21	57.00	125.06	-68.06	QP
2	0.0177	35.89	20.94	56.83	122.65	-65.82	QP
3	0.0347	31.74	21.68	53.42	116.80	-63.38	QP
4	0.0618	32.02	22.64	54.66	111.78	-57.12	QP
5	0.1058	29.96	22.34	52.30	107.11	-54.81	QP
6	0.1481	58.08	21.92	80.00	104.19	-24.19	QP

For 150KHz-30MHz

(Phone Frequency:360KHz, Earphone Frequency:110-205KHz, Watch Frequency:300-350KHz



Remark:

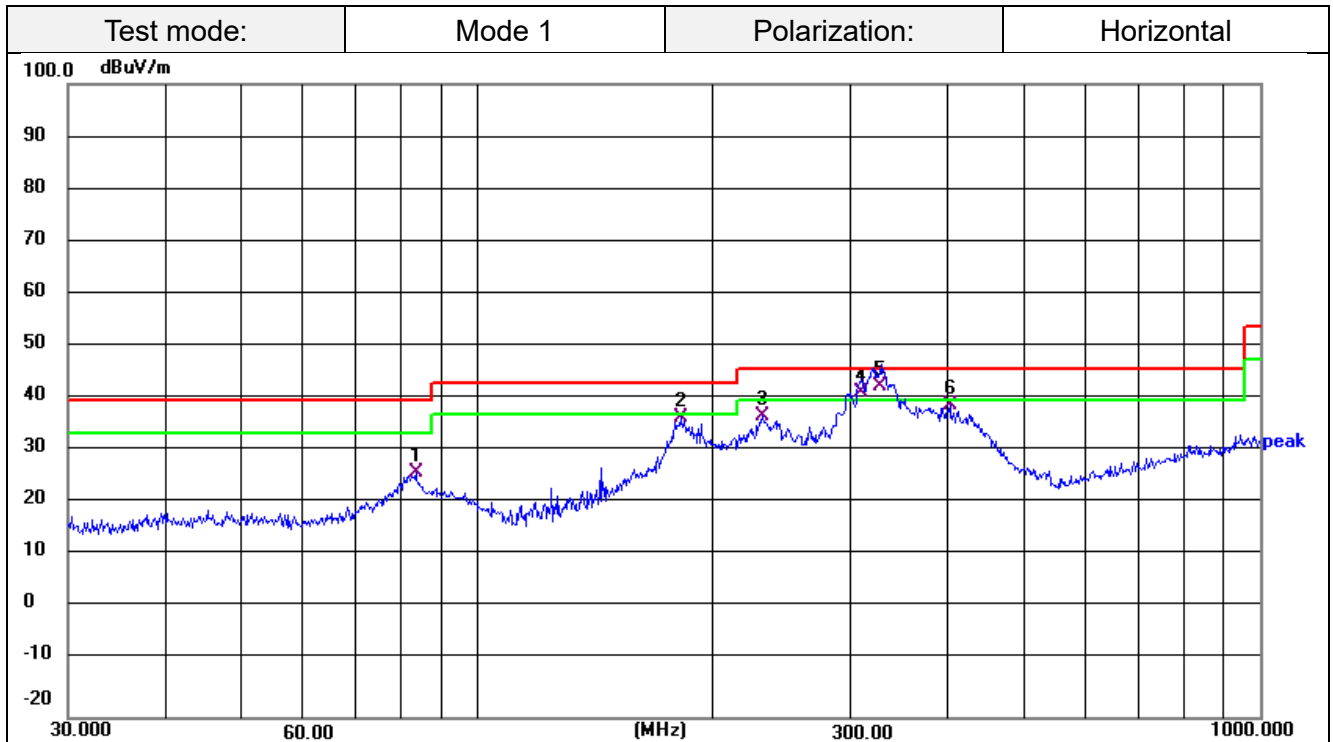
Emission Level = Reading + Factor;

Factor = Antenna Factor + Cable Loss;

Margin= Emission Level - Limit.

No.	Frequency (MHz)	Reading (dBuV)	Factor (dB/m)	Level (dBuV/m)	Limit (dBuV/m)	Margin (dB)	Det.
1	0.3265	43.48	21.52	65.00	97.33	-32.33	QP
2	0.3600	48.42	21.58	70.00	96.48	-26.48	QP
3	0.6790	25.43	22.30	47.73	70.97	-23.24	QP
4	2.4090	24.29	22.48	46.77	69.54	-22.77	QP
5	5.5640	21.00	23.22	44.22	69.54	-25.32	QP
6	23.7615	2.75	45.29	48.04	69.54	-21.50	QP

For 30MHz-1GHz



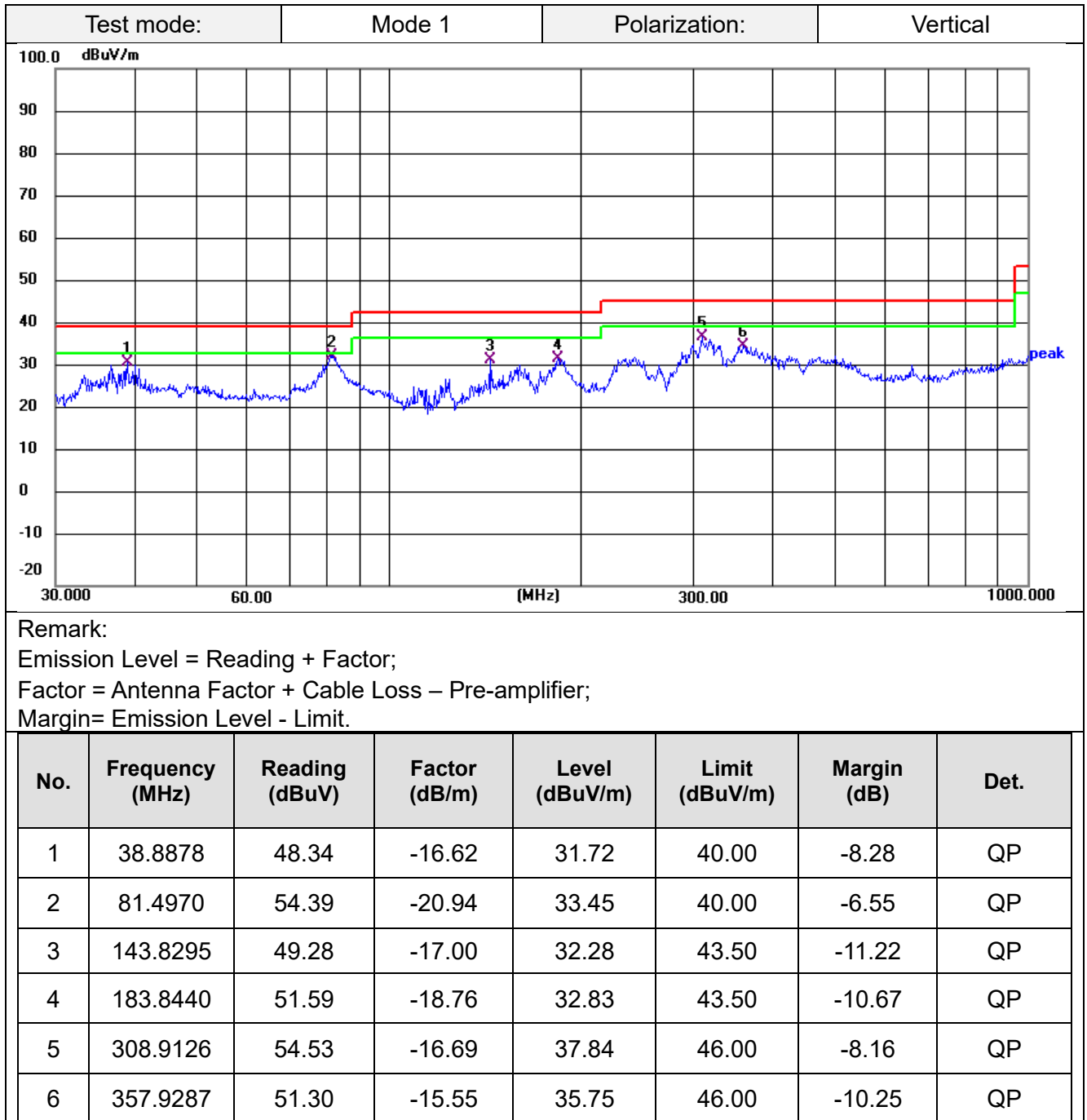
Remark:

Emission Level = Reading + Factor;

Factor = Antenna Factor + Cable Loss – Pre-amplifier;

Margin= Emission Level - Limit.

No.	Frequency (MHz)	Reading (dBuV)	Factor (dB/m)	Level (dBuV/m)	Limit (dBuV/m)	Margin (dB)	Det.
1	83.5222	47.40	-20.95	26.45	40.00	-13.55	QP
2	181.9202	55.33	-18.54	36.79	43.50	-6.71	QP
3	231.7179	56.80	-19.71	37.09	46.00	-8.91	QP
4	309.9577	58.40	-16.66	41.74	46.00	-4.26	QP
5	327.0930	59.06	-16.17	42.89	46.00	-3.11	QP
6	401.8385	53.75	-14.52	39.23	46.00	-6.77	QP



3.3 20dB Bandwidth

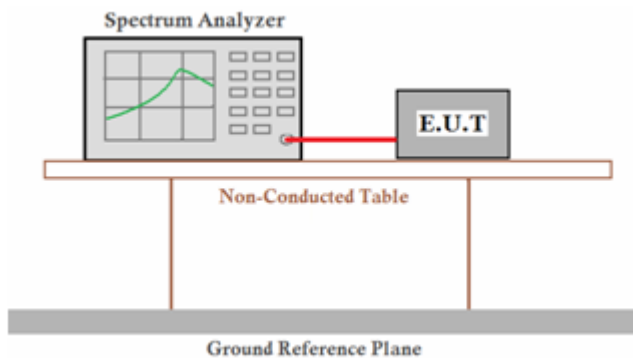
Limit

The 20dB bandwidth shall be less than 80% of the permitted frequency band.

Test Procedure

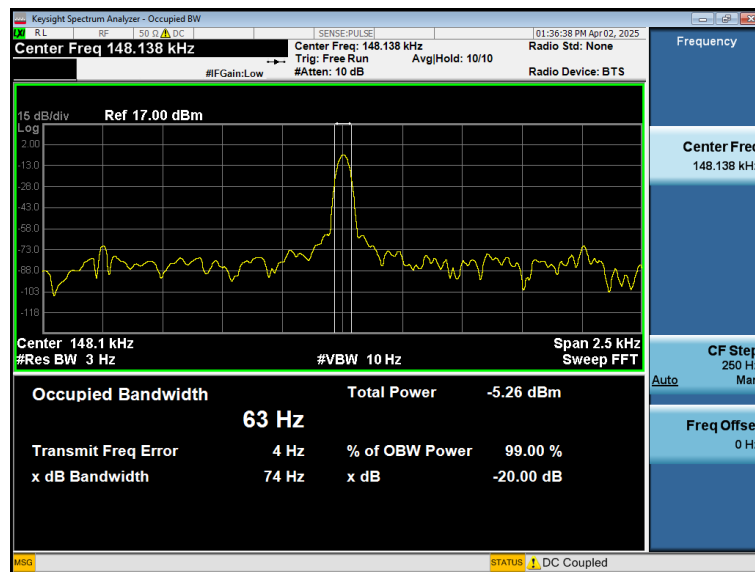
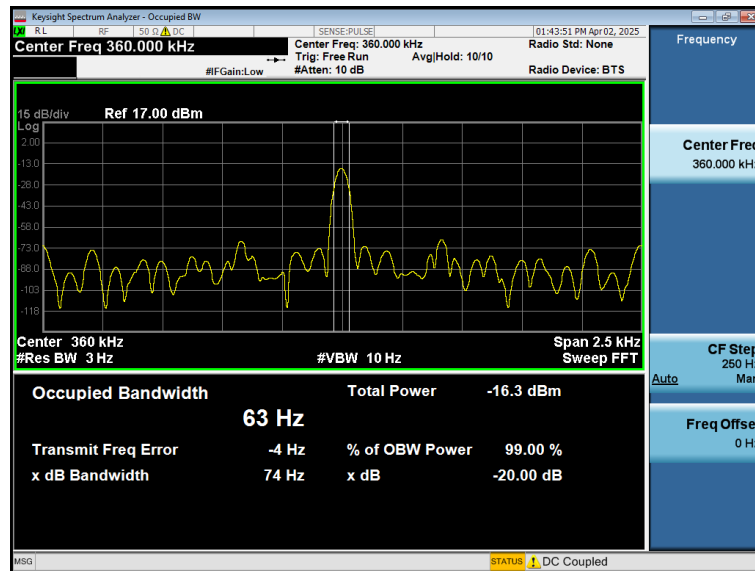
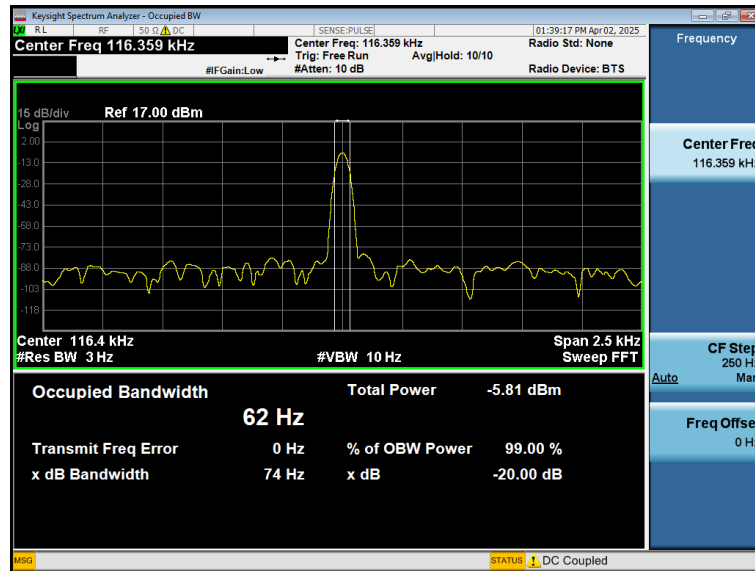
1. Set RBW = 30Hz.
2. Set the video bandwidth (VBW) $\geq 3 \times$ RBW.
3. Detector = Peak.
4. Trace mode = max hold.
5. Sweep = auto couple.
6. Allow the trace to stabilize.
7. Measure the maximum width of the emission that is constrained by the frequencies associated with the two outermost amplitude points (upper and lower frequencies) that are attenuated by 20 dB relative to the maximum level measured in the fundamental emission.

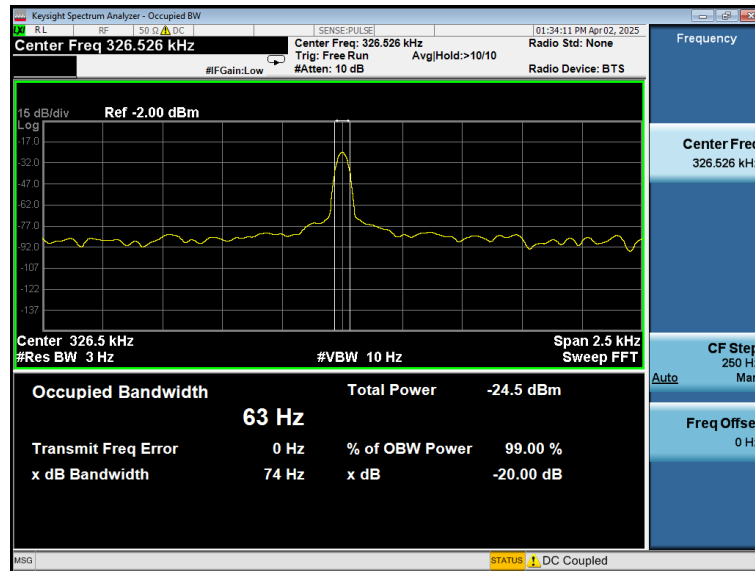
Test setup



Test Results

Coil	Frequency (KHz)	20dB bandwidth (KHz)	99% bandwidth (KHz)	Result
Phone	116.359	0.074	--	Pass
	360.000	0.074	--	Pass
Earphone	148.138	0.074	--	Pass
Watch	326.526	0.074	--	Pass





3.4 Antenna Requirement

Standard Applicable

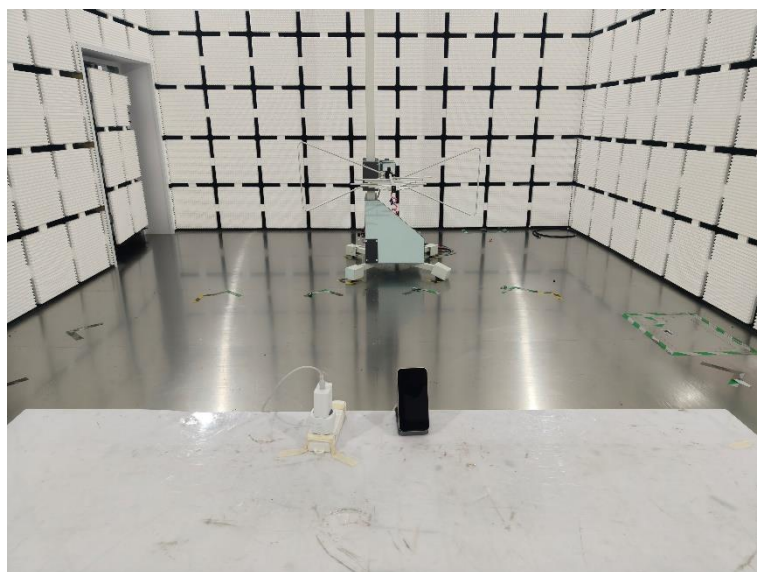
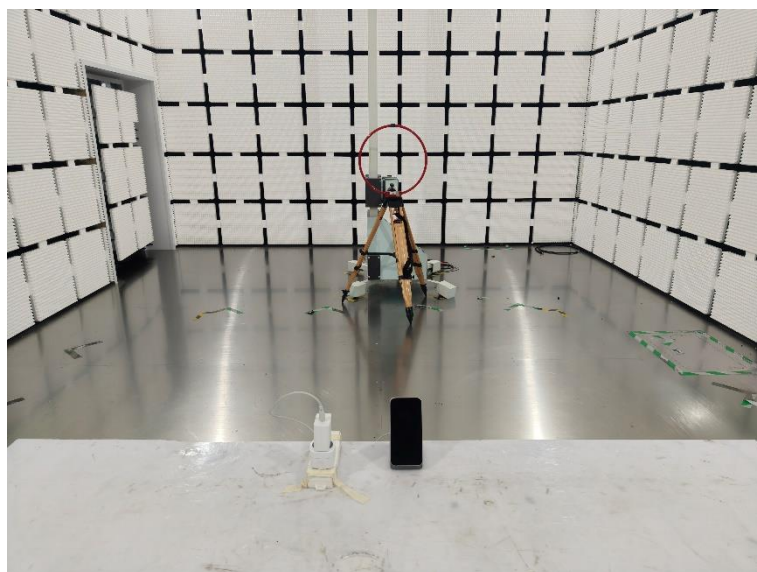
For intentional device, according to FCC 47 CFR Section 15.203:

An intentional radiator shall be designed to ensure that no antenna other than that furnished by the responsible party shall be used with the device. The use of a permanently attached antenna or of an antenna that uses a unique coupling to the intentional radiator, the manufacturer may design the unit so that a broken antenna can be replaced by the user, but the use of a standard antenna jack or electrical connector is prohibited

Confirmation

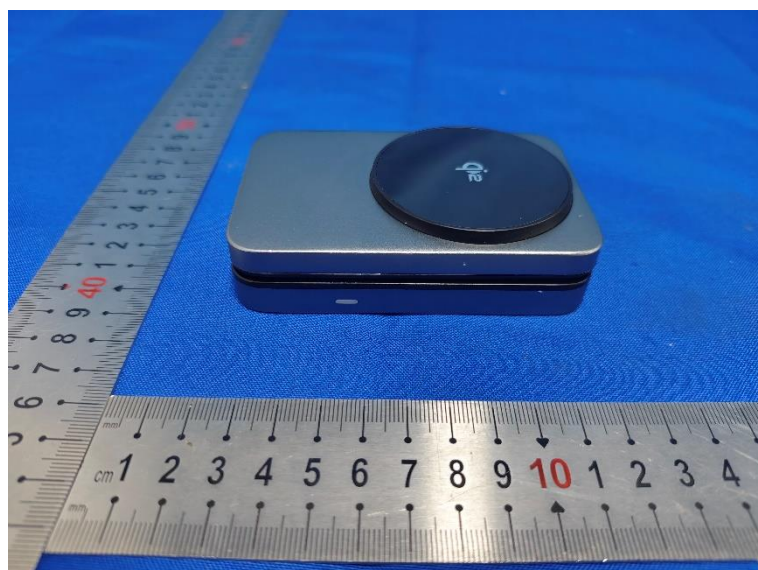
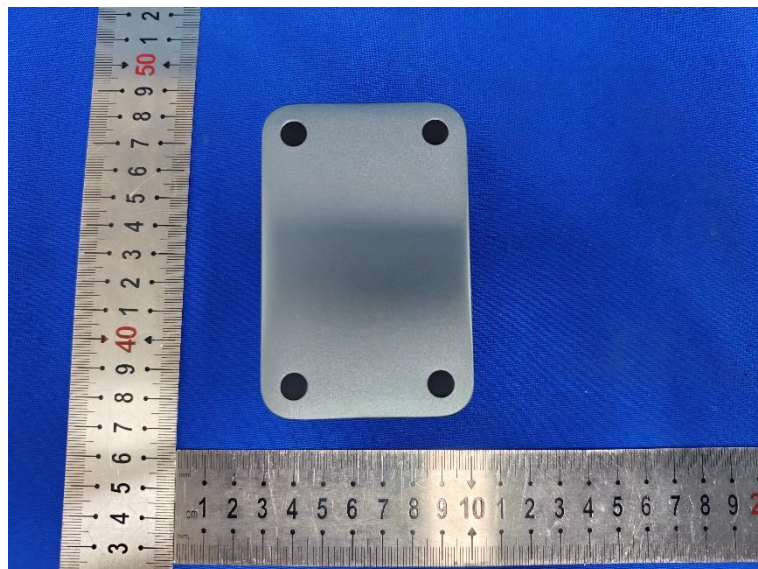
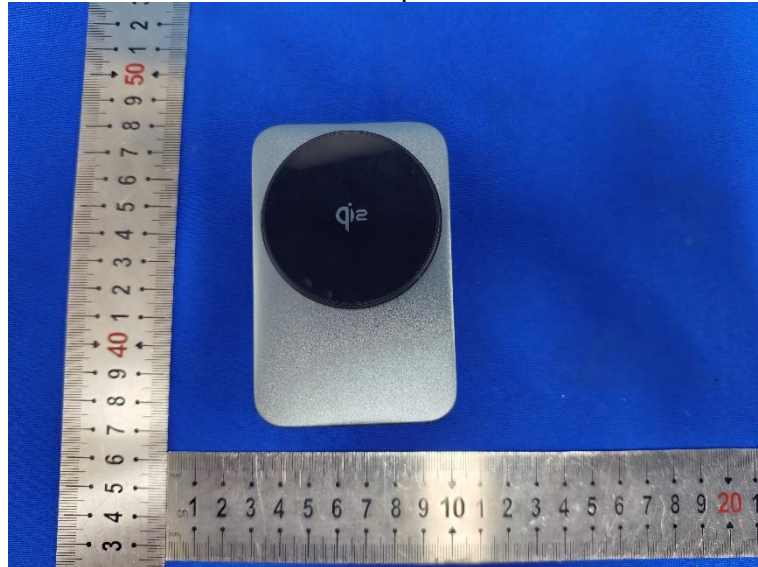
The EUT's antenna is an Inductive Loop coil Antenna, the best case gain of the antenna is 0dBi.

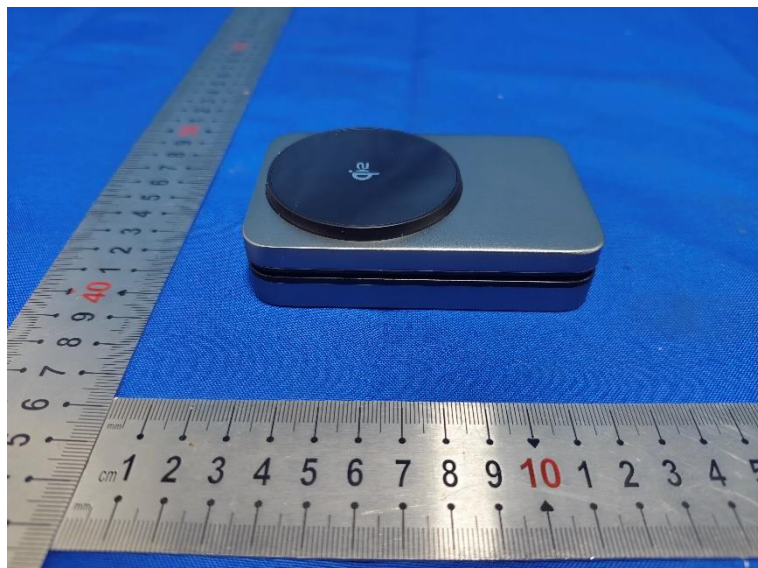
4 Test Setup Photographs of EUT

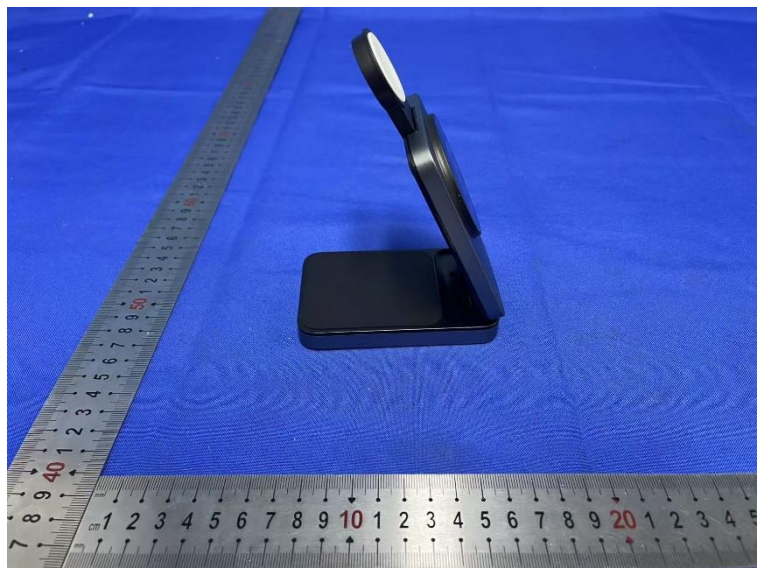


5 PHOTOS OF THE EUT

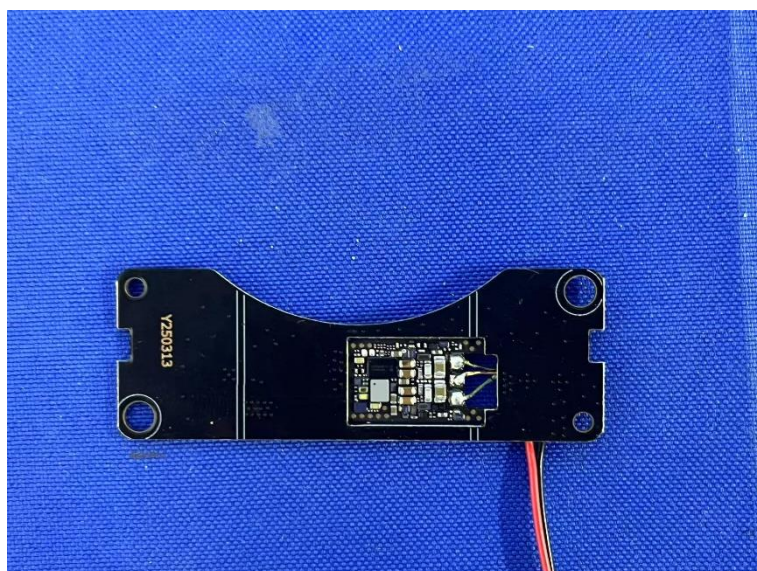
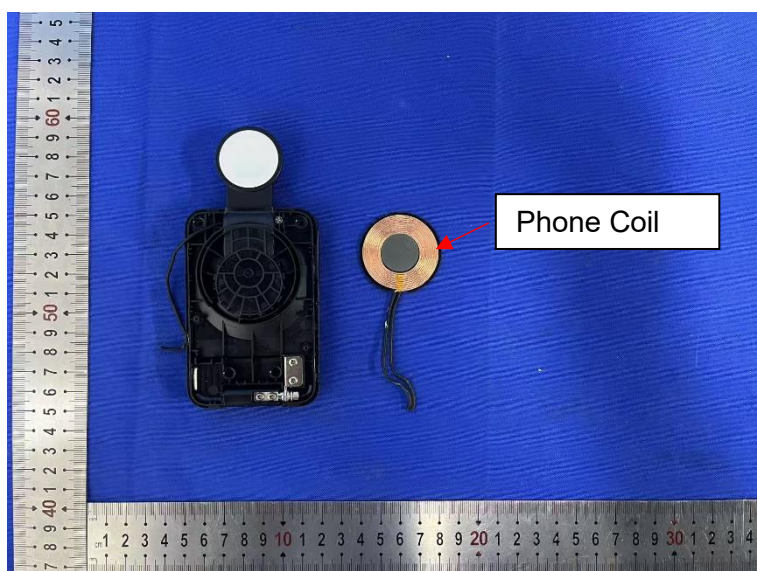
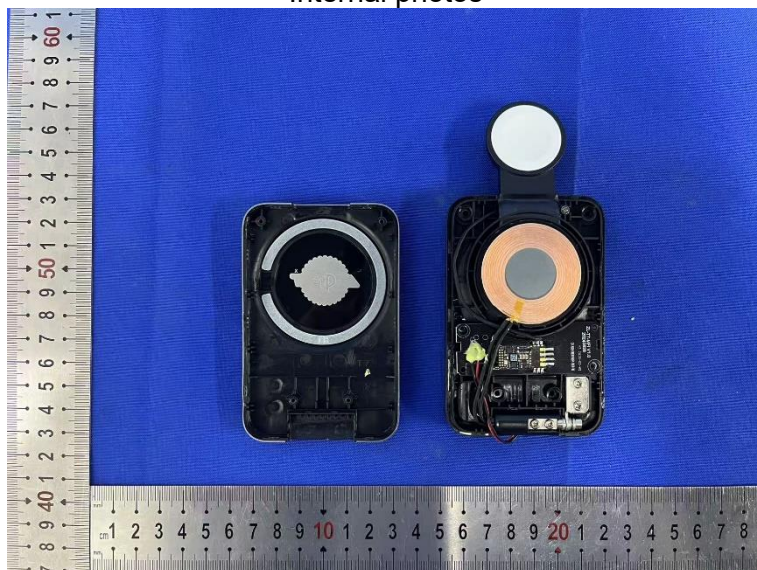
External photos

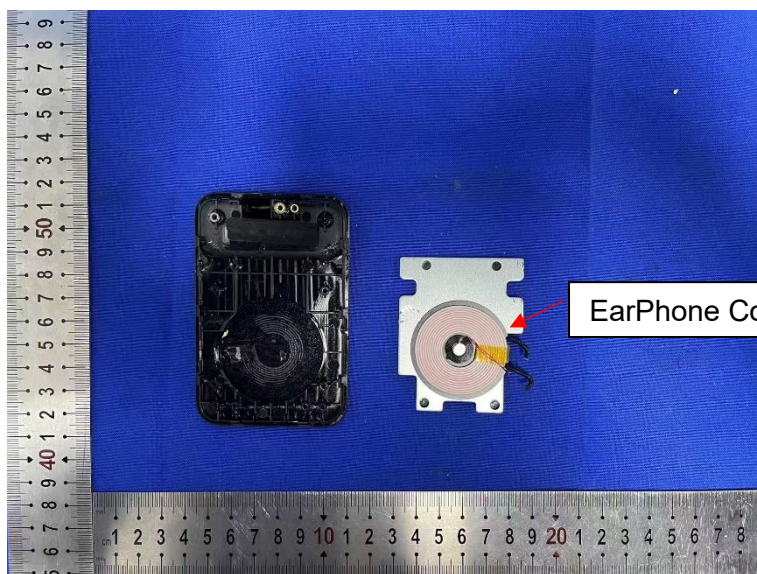
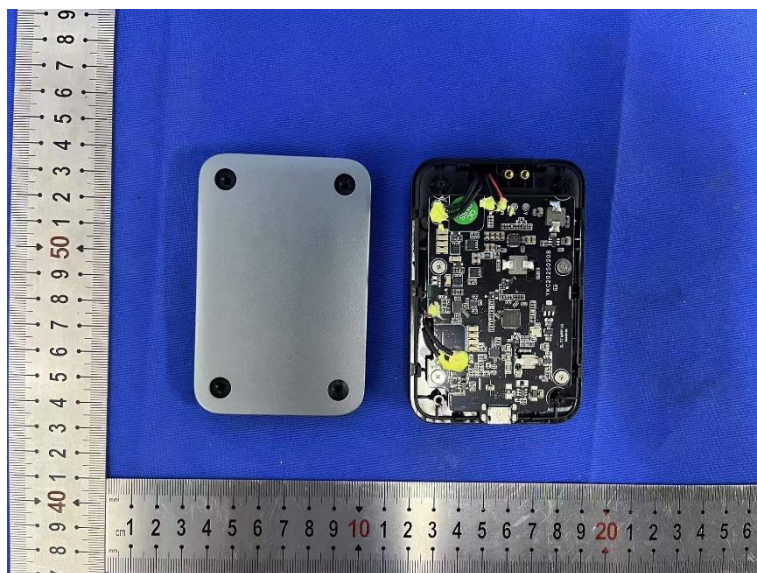
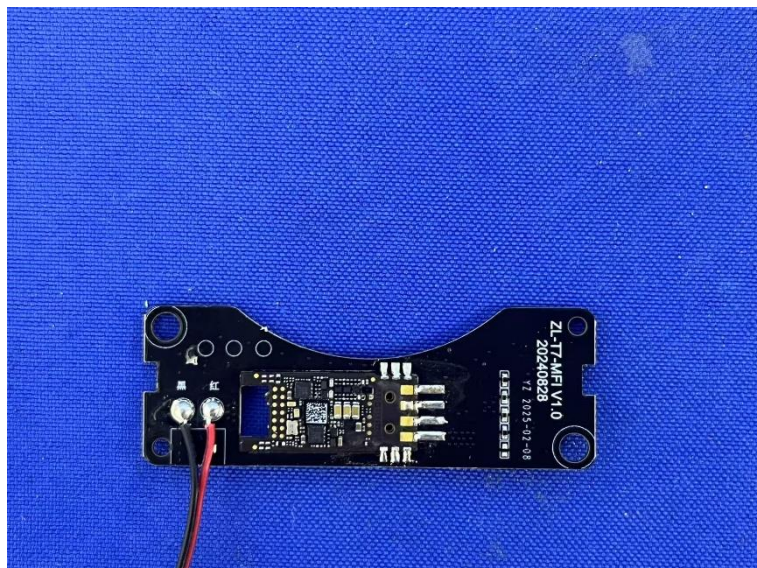


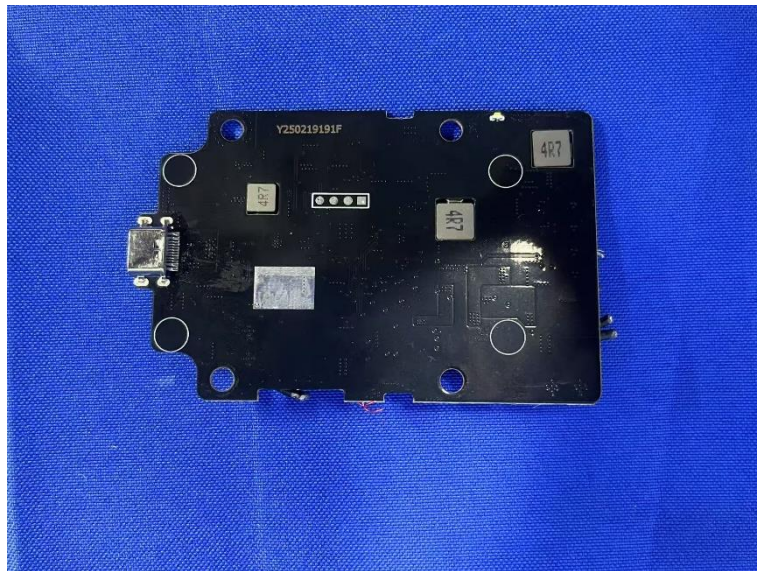
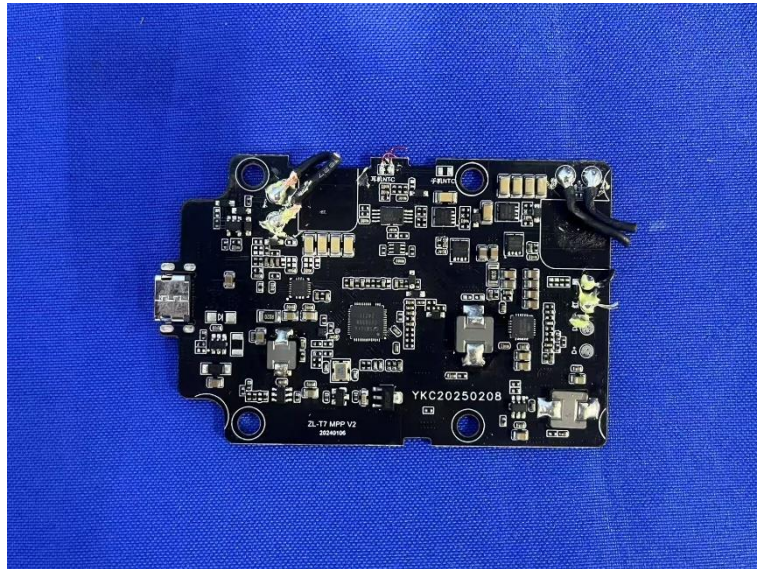




Internal photos







***** End of Report *****