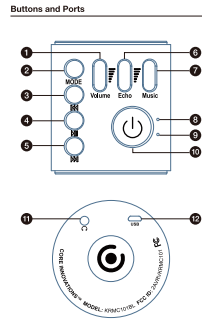
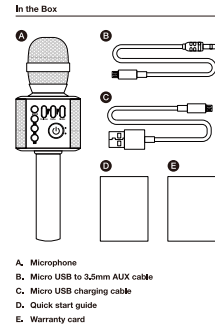


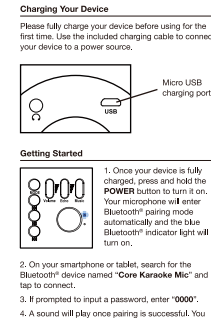
成品尺寸：70*100mm(风琴折)

材质：128G双胶纸双面印刷



Buttons and Ports

1. **Microphone Volume Adjustment:** use to increase or decrease microphone volume.
2. **Mode:** press and hold to connect two Core Innovations mics together.
3. **Previous:** press to play the previous song.
4. **Play / Pause:** press to play; press again to pause.
5. **Next:** press to play the next song.
6. **Echo Volume Adjustment:** use to increase or decrease echo volume.
7. **Music Volume Adjustment:** use to increase or decrease music volume.
8. **Bluetooth® Indicator Light:** a blue light indicates Bluetooth® is enabled.
9. **Charging Indicator Light:** a red light indicates the device is charging. The light will turn off when the device is fully charged.
10. **Power ON / OFF:** press and hold for 3 seconds to power on; press and hold for 3 seconds to power off.
11. **Headphone jack**
12. **Micro USB charging port / AUX IN / Recording port**



Getting Started (Continued)

may now start streaming music to your microphone using your connected device.

NOTE: You may adjust the microphone's volume according to your preference. You may also use your device as a Bluetooth® speaker by turning down the echo volume and music volume.

When the battery is low, please turn off the microphone and charge it using the included charging cable.

Bluetooth® Pairing

After initial Bluetooth® pairing, your microphone will automatically connect to the previously paired device when turned on.

To pair your speaker to a new device:

1. Make sure your microphone is turned off and disable Bluetooth® on your previously connected device.
2. Press and hold the **POWER** button on your microphone to turn it on. It will enter Bluetooth® pairing mode automatically.
3. On the new smartphone you wish to pair, search for the Bluetooth® device named **"Core Karaoke Mic"** and tap to connect.
4. A sound will play once pairing is successful. You are now ready to stream music from your new device.

Duet Mode / TWS Sync Mode

This karaoke mic features **TWS (True Wireless Stereo)** technology, which allows you and another person to sing on two Core Innovations karaoke mics simultaneously.

1. Press and hold the **POWER** button on both microphones to turn them on (both status lights will start flashing).
2. Press and hold the **MODE** button on one microphone to assign it as the primary mic. Once the primary mic has been assigned, the status light on the secondary mic will stop flashing. The primary mic status light will continue to flash.
3. Connect your Bluetooth®-enabled device to the primary mic by searching for **"Core Karaoke MIC"** in your Bluetooth® device settings. Once connected, the primary mic status light will stop flashing.
4. Both microphones are now in duet (TWS) mode and will play your selected music simultaneously.

Note: To disconnect the secondary mic, press and hold the **MODE** button on that mic (the LED light will start to flash again).

Press and hold the **MODE** button again on the secondary mic to reconnect to the primary mic.



Specifications

- Karaoke Amplifier
- Line-in Audio
- Fully compatible with Android® devices; partly compatible with Apple® devices
- Song recording function for Android® devices
- Bluetooth® Version: 5.0
- Speaker Diameter: 2"
- Speaker Power: 5W
- Working Voltage: 3.7 V
- Pick Up: Condenser
- Frequency: 130 Hz - 10 KHz
- Mixer: Reverbation
- Battery: Built-in 1200 mAh battery
- Charging Time: 3 - 3.5 hours
- Adapter (not included): DC 5V / 1000mA (universal with mobile phone adapter)

FCC Warning

This device complies with part 15 of the FCC Rules. Operation is subject to the following two conditions:
(1) This device may not cause harmful interference, and
(2) this device must accept any interference received, including interference that may cause undesired operation.

Any changes or modifications not expressly approved by the party responsible for compliance could void the user's authority to operate the equipment.

Note: This equipment has been tested and found to comply with the limits for a Class B digital device, pursuant to part 15 of the FCC Rules. These limits are designed to provide reasonable protection against harmful interference in a residential installation. This equipment generates, uses and can radiate radio frequency energy and, if not installed and used in accordance with the instructions, may cause harmful interference to radio communications. However, there is no guarantee that interference will not occur in a particular installation. If this equipment does cause harmful interference to radio or television reception, which can be determined by turning the equipment off and on, the user is encouraged to try to connect the interference by one or more of the following measures:

- Reorient or relocate the receiving antenna.
- Increase the separation between the equipment and the receiver.
- Connect the equipment into an outlet on a circuit different from that to which the receiver is connected.
- Consult the dealer or an experienced radio/TV technician for help.

The device has been evaluated to meet general RF exposure requirement. The device can be used in portable exposure condition without restriction.