

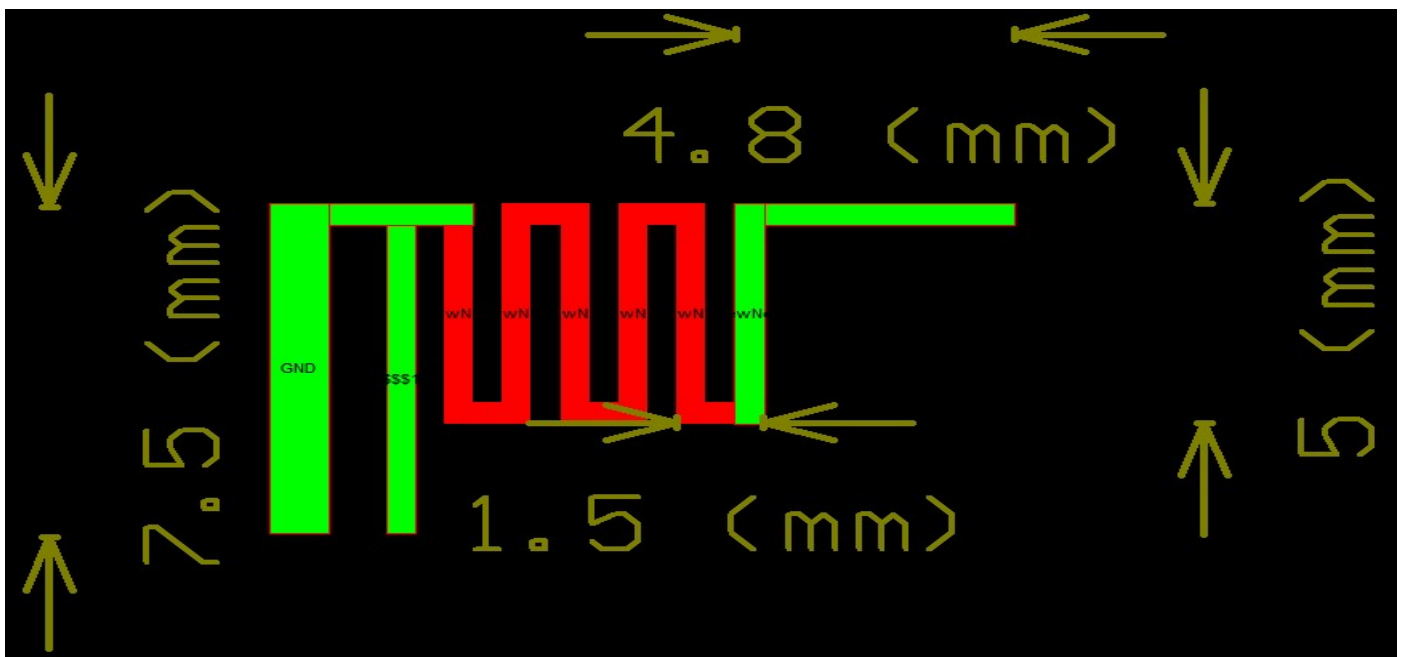
# Antenna Specification

## Specifications

### Summary

ITEM	SPEC.	
Model Name	ISM 2.4 GHz	
Center Frequency	2408 MHz 2437 MHz 2468 MHz	3.85 dBi 3.18 dBi 2.80 dBi
MAX. GAIN	3.85 dBi	
Polarization	Horizontal	
Azimuth Beam Pattern	Omni-directional	
Impedance	50 $\Omega$	
Antenna Length	41 mm	

### Antenna Photo & Length



# 1.Main antenna :

## 1.1 Horizontal



**Advance Data Technology Corporation**

**誠信科技股份有限公司**

http://www.adt.com.tw E-mail: service@adt.com.tw

Hwa Ya Lab : No.19, Hwa Ya 2nd RD, Kieki-kai, Taoyuan, Taiwan, R.O.C.

Tel (03) 318-3232 Fax (03) 318-5050

Tayuan Lab : 13-1 Lane 19, Wei Shai 3rd St, Kieki-kai, Taoyuan, Taiwan, R.O.C.

Tel (03) 327-0910 Fax (03) 327-0892

Hsichin Lab: 81-1 Lillbacking, 9th Lin, Wuling Tzuen, Chinglinli, Hsichin, Taiwan, R.O.C.

Tel (03) 593-5343 Fax (03) 593-5342

Brand / Model : IBM 2.4GHz

Remark : E1

Tested by : SHELLY

EUT description :

Location: **RF Chamber3**

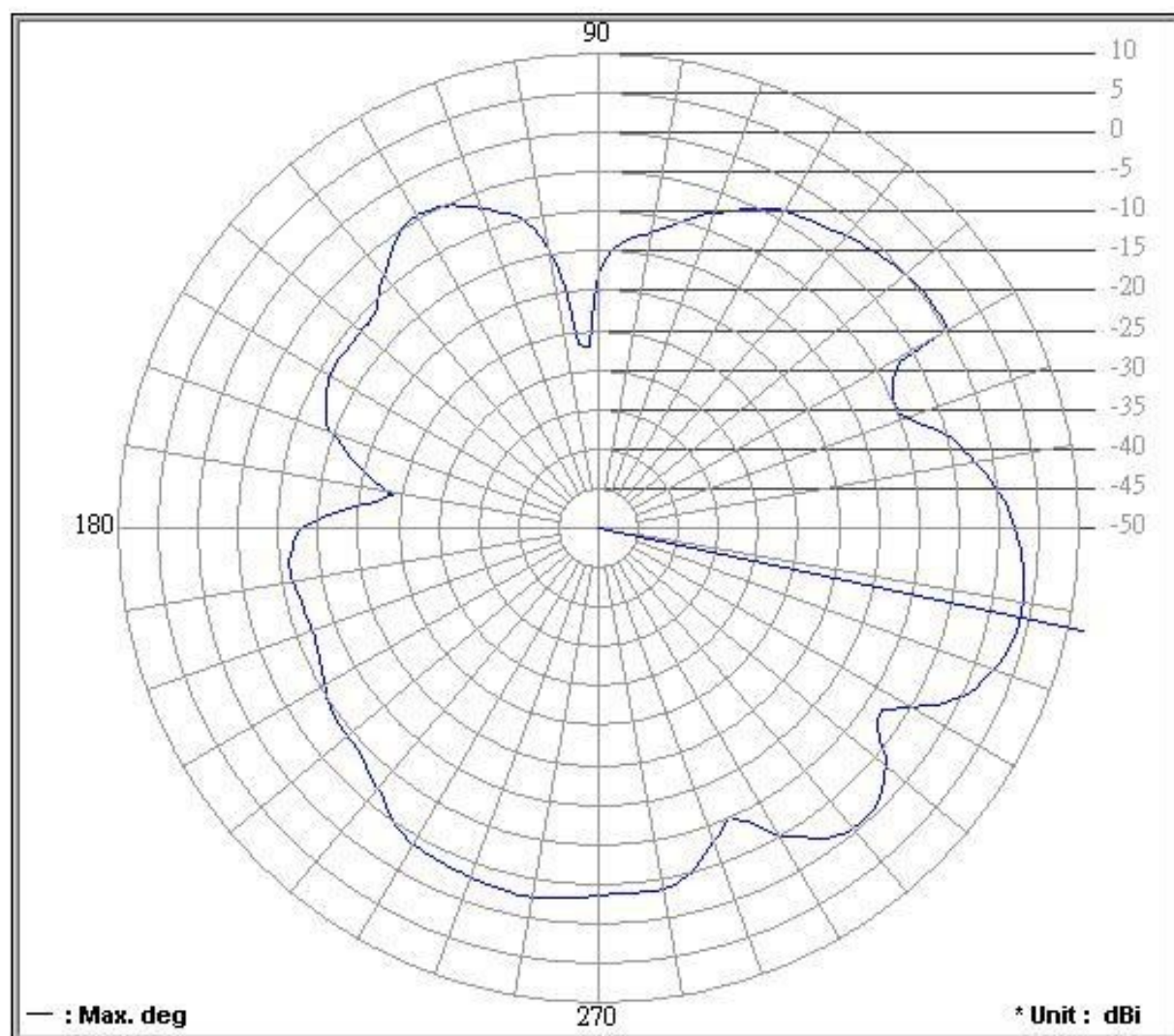
Date: 2015/11/16

Time: **15:20:43**

Temperatuer (°C): **25**

Humidity (%): **75**

Approved by:



Frequency (MHz) : 2408

Antenna Polarity : **Horizontal**

Average Gain (dB) : **-3.64**

Maximum Gain (dB) : **3.85**

Maximum Gain (degree) : **348**

Minimum Gain (dB) : **-27.08**

Minimum Gain (degree) : **93**

C:\Antenna Pattern V5.0\Graph\0818\08180019.png

## 1.2 Vertical



**Advance Data Technology Corporation**

**誠信科技股份有限公司**

http://www.adt.com.tw E-mail: service@adt.com.tw

Hwa Ya Lab : No.19, Hwa Ya 2nd RD, Kieikiao, Taoyuan, Taiwan, R.O.C.

Tel (03) 318-3232 Fax (03) 318-6050

Tayuan Lab : 13-1 Lane 19, Wei Siao 3rd St, Kieikiao, Taoyuan, Taiwan, R.O.C.

Tel (03) 327-0910 Fax (03) 327-0892

Hsichia Lab: 81-1 Lilaokeng, 9th Lh, Wuling Tzuen, Cihinglin, Hsichia, Taiwan, R.O.C.

Tel (03) 593-5343 Fax (03) 593-5342

Brand / Model : IBM 2.4GHz

Remark : E1

Tested by : SHELLY

EUT description :

Location: **RF Chamber3**

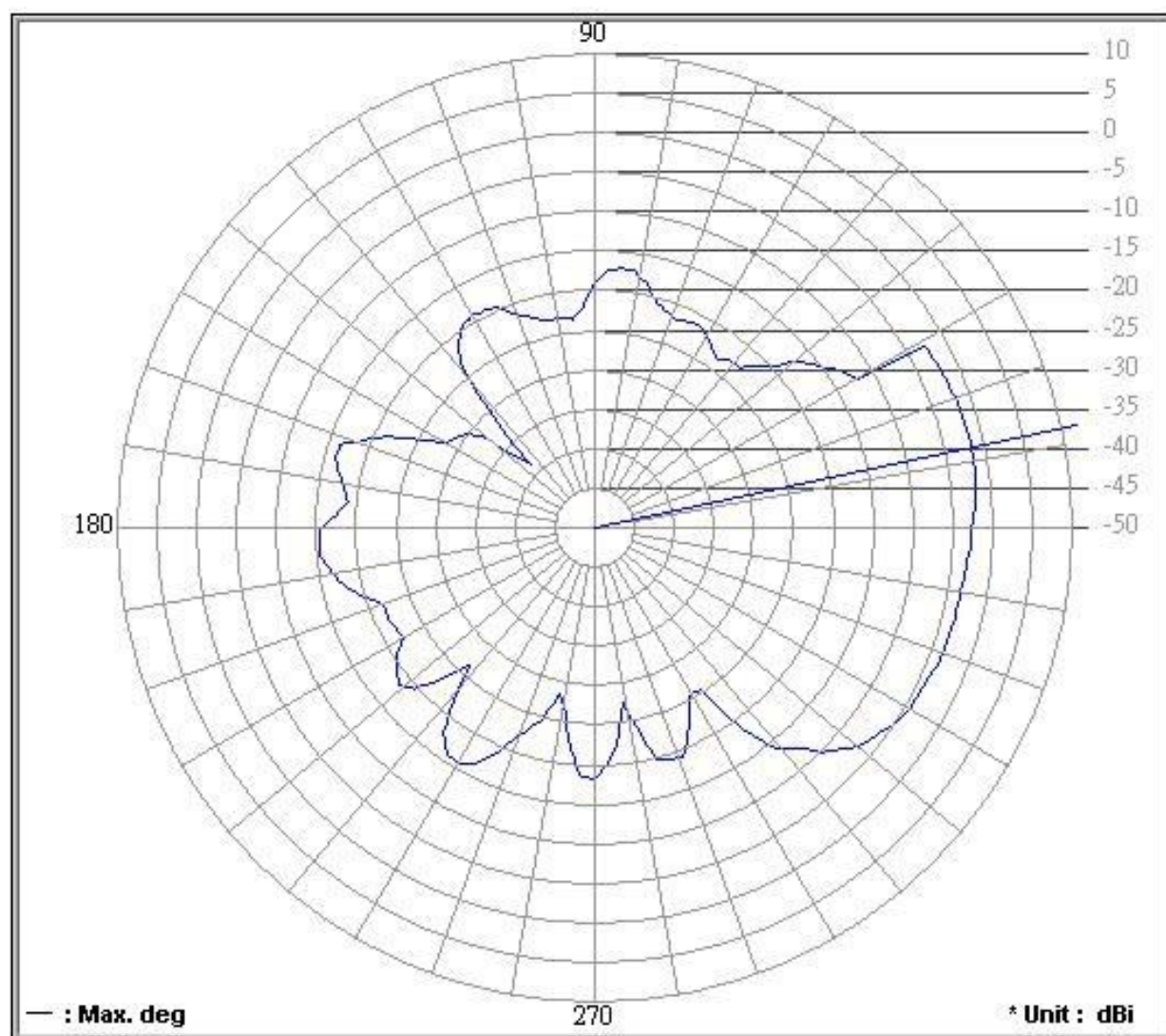
Date: 2015/11/16

Time: **15:34:49**

Temperatuer (°C): **25**

Humidity (%): **75**

Approved by:



Frequency (MHz) : 2408

Antenna Polarity : **Vertical**

Average Gain (dB) : **-9.57**

Maximum Gain (dB) : **-1.54**

Maximum Gain (degree) : **12**

Minimum Gain (dB) : **-38.76**

Minimum Gain (degree) : **135**

C:\Antenna Pattern V5.0\Graph\0818\08180024.png

## 2. Main antenna :

### 2.1 Horizontal



**Advance Data Technology Corporation**

**誠信科技股份有限公司**

http://www.adt.com.tw/ E-mail: service@adt.com.tw

Hwa Ya Lab : No.19, Hwa Ya 2nd RD, Kieki Kai, Taoyuan, Taiwan, R.O.C.

Tel (03) 318-3232 Fax (03) 318-5050

Tayuan Lab : 13-1 Lane 19, Wei Si Kai 3rd St, Kieki Kai, Taoyuan, Taiwan, R.O.C.

Tel (03) 327-0910 Fax (03) 327-0892

Hsichui Lab: 81-1 Lillacking, 9th Lla, Wuling Tzuen, Chinglin, Hsichui, Taiwan, R.O.C.

Tel (03) 593-5343 Fax (03) 593-5342

Brand / Model : IBM 2.4GHz

Remark : E1

Tested by : SHELLY

EUT description :

Location: **RF Chamber3**

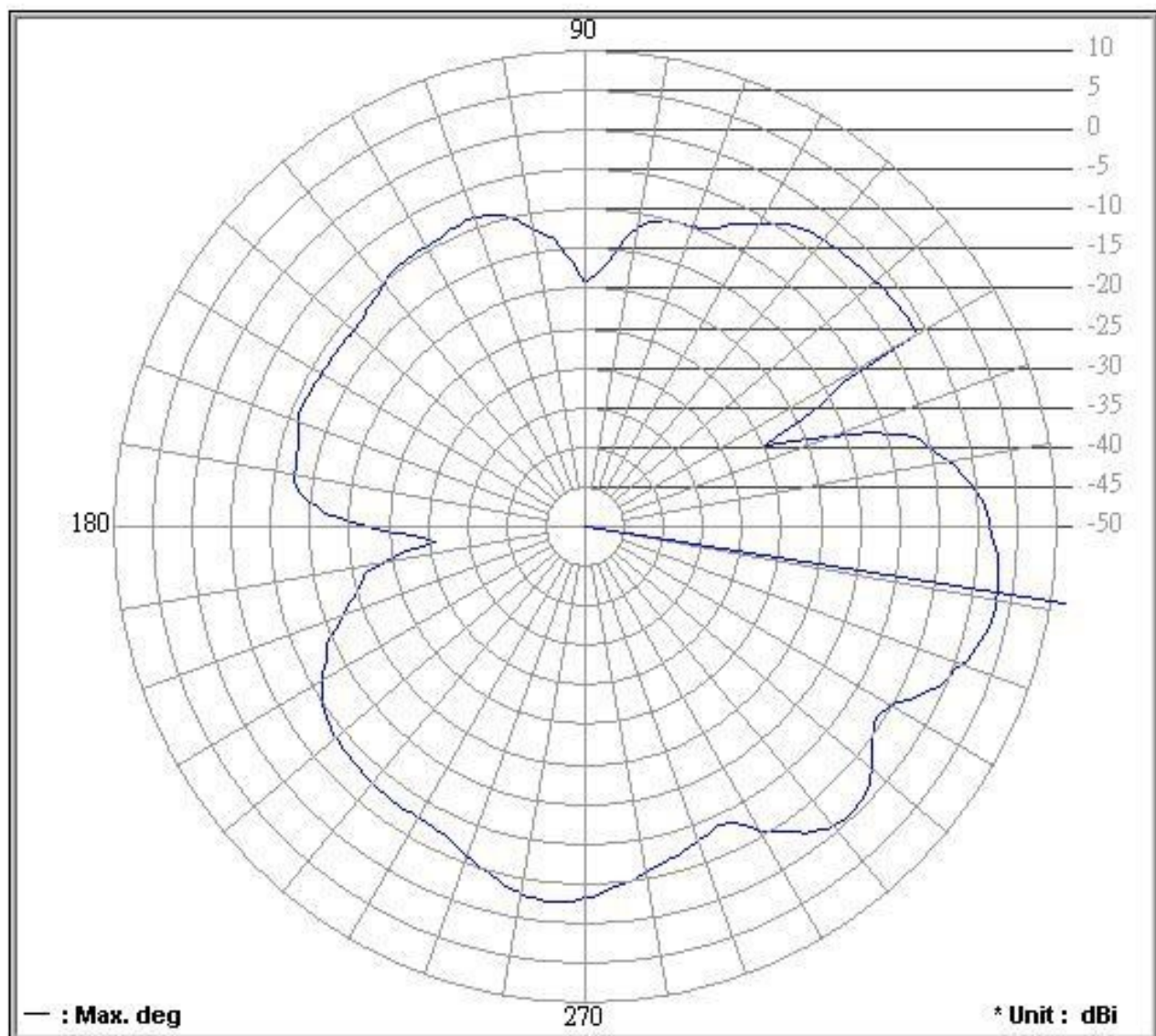
Date: 2015/11/16

Time: **15:23:51**

Temperatuer (°C): **25**

Humidity (%): **75**

Approved by:



Frequency (MHz) : 2437

Antenna Polarity : **Horizontal**

Average Gain (dB) : **-4.64**

Maximum Gain (dB) : **3.18**

Maximum Gain (degree) : **351**

Minimum Gain (dB) : **-30.92**

Minimum Gain (degree) : **186**

C:\Antenna Pattern V5.0\Graph\0818\08180020.png

## 2.2 Vertical



**Advance Data Technology Corporation**

**誠信科技股份有限公司**

http://www.adt.com.tw E-mail: service@adt.com.tw

Hwa Ya Lab : No.19, Hwa Ya 2nd RD, Kieik kiai, Taoyuan, Taiwan, R.O.C.

Tel (03) 318-3232 Fax (03) 318-5050

Taipei Lab : 13-1 Lane 19, Wei Shai 3rd St, Kieik kiai, Taoyuan, Taiwan, R.O.C.

Tel (03) 327-0910 Fax (03) 327-0892

Hsichih Lab: 81-1 Lailackeig, 9th Lih, Wuling Tseia, Chilinglin, Hsichih, Taiwan, R.O.C.

Tel (03) 593-5343 Fax (03) 593-5342

Brand / Model : IBM 2.4GHz

Remark : E1

Tested by : SHELLY

EUT description :

Location: **RF Chamber3**

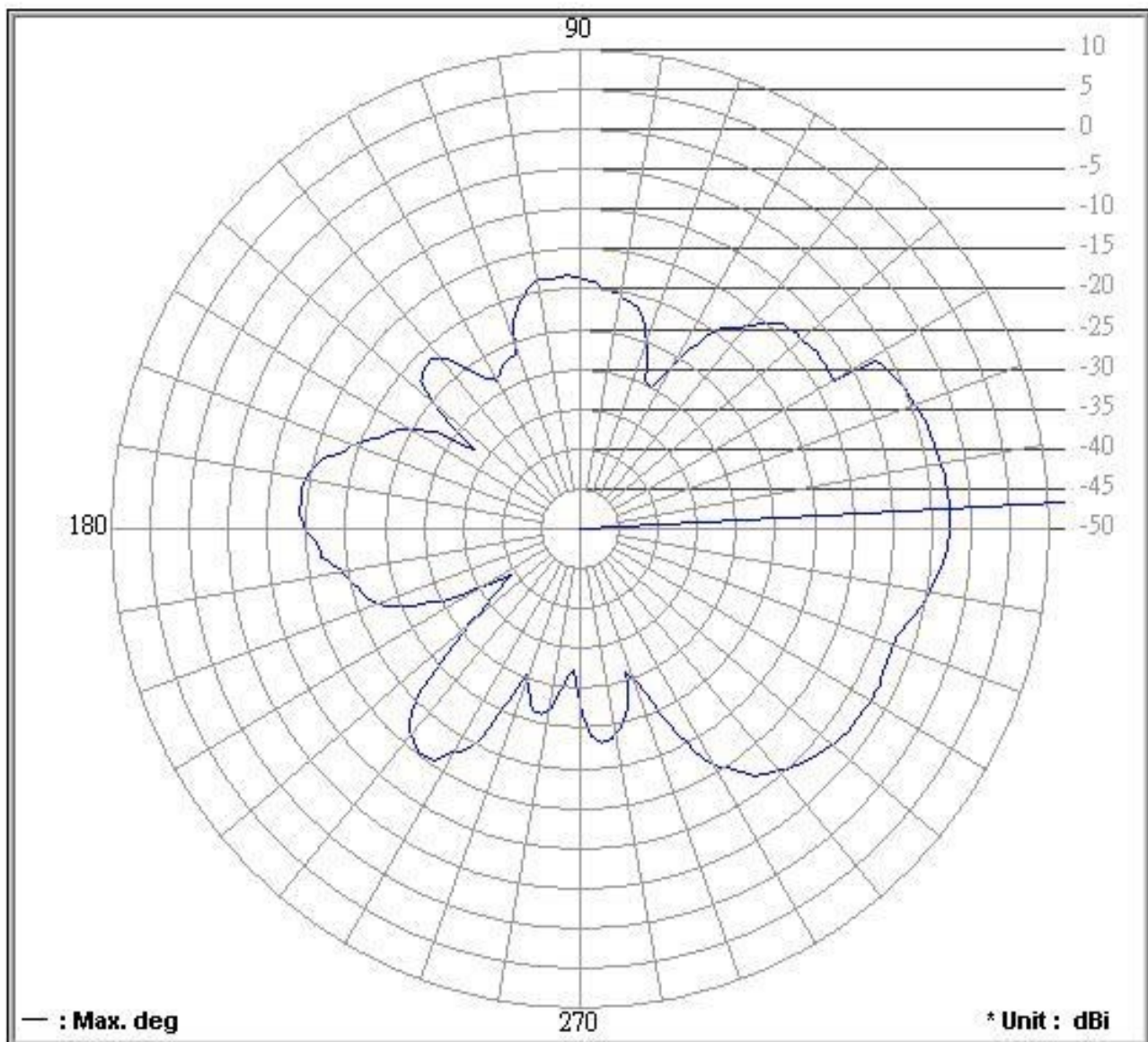
Date: 2015/11/16

Time: **15:32:20**

Temperatuer (°C): **25**

Humidity (%): **75**

Approved by:



Frequency (MHz) : 2437

Antenna Polarity : **Vertical**

Average Gain (dB) : **-11.06**

Maximum Gain (dB) : **-2.58**

Maximum Gain (degree) : **3**

Minimum Gain (dB) : **-39.35**

Minimum Gain (degree) : **213**

C:\Antenna Pattern V5.0\Graph\0818\08180023.png



**Advance Data Technology Corporation**

**誠信科技股份有限公司**

http://www.adt.com.tw/ E-mail: service@adt.com.tw

Hwa Ya Lab : No.19, Hwa Ya 2nd RD, Kieikiai, Taoyuan, Taiwan, R.O.C.

Tel (886) 318-3232 Fax (886) 318-5050

Taipei Lab : 13-1 Lane 19, Wei Sikai 3rd St, Kieikiai, Taoyuan, Taiwan, R.O.C.

Tel (886) 327-0910 Fax (886) 327-0892

Hsichui Lab: 81-1 Lillacking, 9th Lla, Wuling Tseai, Chinglin, Hsichui, Taiwan, R.O.C.

Tel (886) 593-5343 Fax (886) 593-5342

Brand / Model : IBM 2.4GHz

Remark : E1

Tested by : SHELLY

EUT description :

Location: **RF Chamber3**

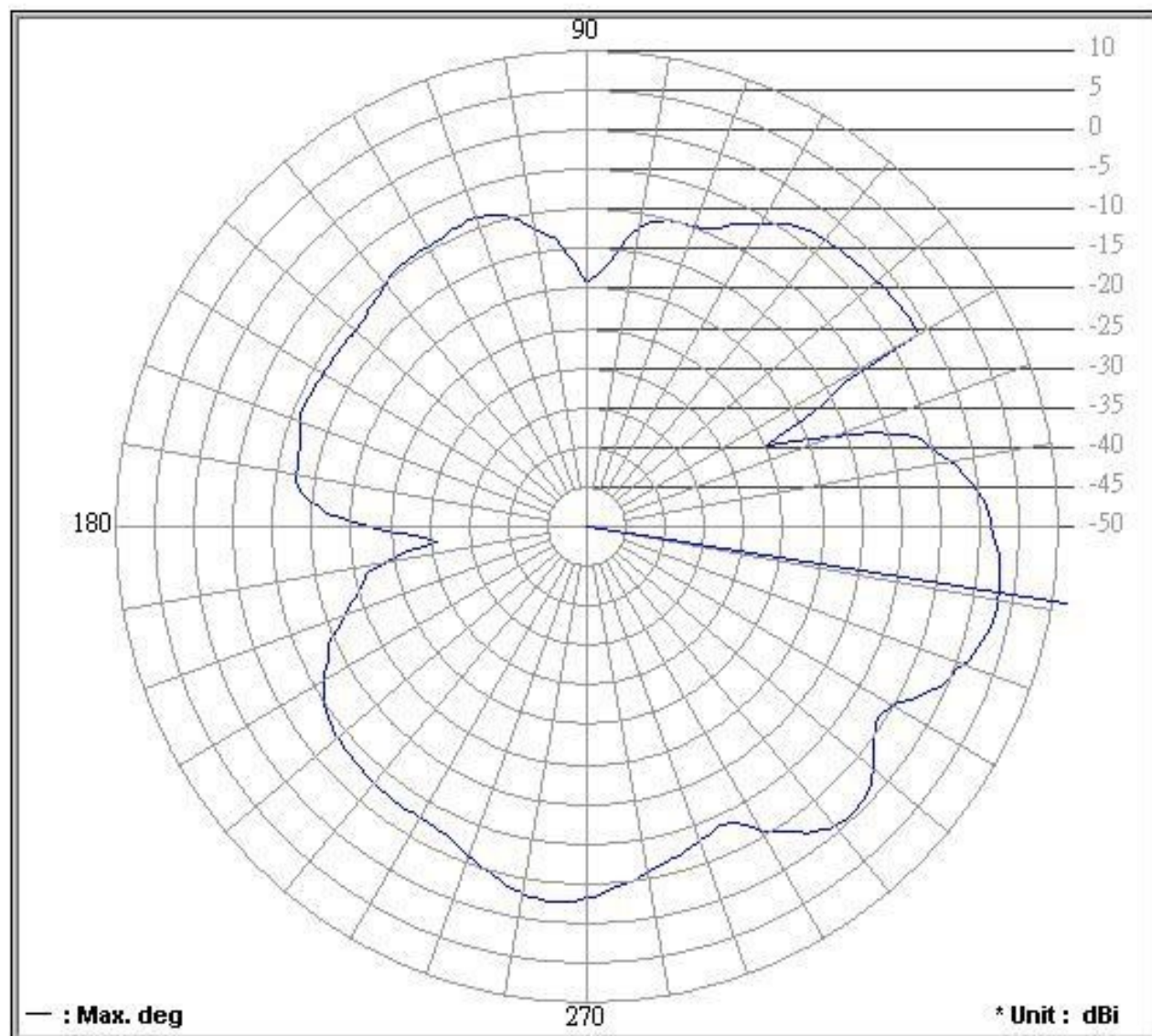
Date:

Time: **15:23:51**

Temperatuer (°C): **25**

Humidity (%): **75**

Approved by:



Frequency (MHz): 2468

Antenna Polarity: **Horizontal**

Average Gain (dB): **-4.64**

Maximum Gain (dB): **2.80**

Maximum Gain (degree): **351**

Minimum Gain (dB): **-30.92**

Minimum Gain (degree): **186**

C:\Antenna Pattern V5.0\Graph\0818\08180020.png



**Advance Data Technology Corporation**

**誠信科技股份有限公司**

http://www.adt.com.tw/ E-mail: service@adt.com.tw

Hwa Ya Lab : No.19, Hwa Ya 2nd RD, Kieiklan, Taoyuan, Taiwan, R.O.C.

Tel (03) 318-3232 Fax (03) 318-5050

Tayuan Lab : 13-1 Lane 19, Wei Shan 3rd St, Kieiklan, Taoyuan, Taiwan, R.O.C.

Tel (03) 327-0910 Fax (03) 327-0892

Hsichin Lab: 81-1 Lillackeig, 9th Lh, Wuling Tstet, Chinglin, Hsichin, Taiwan, R.O.C.

Tel (03) 593-5343 Fax (03) 593-5342

Brand / Model : IBM 2.4GHz

Remark : E1

Tested by : SHELLY

EUT description :

Location: **RF Chamber3**

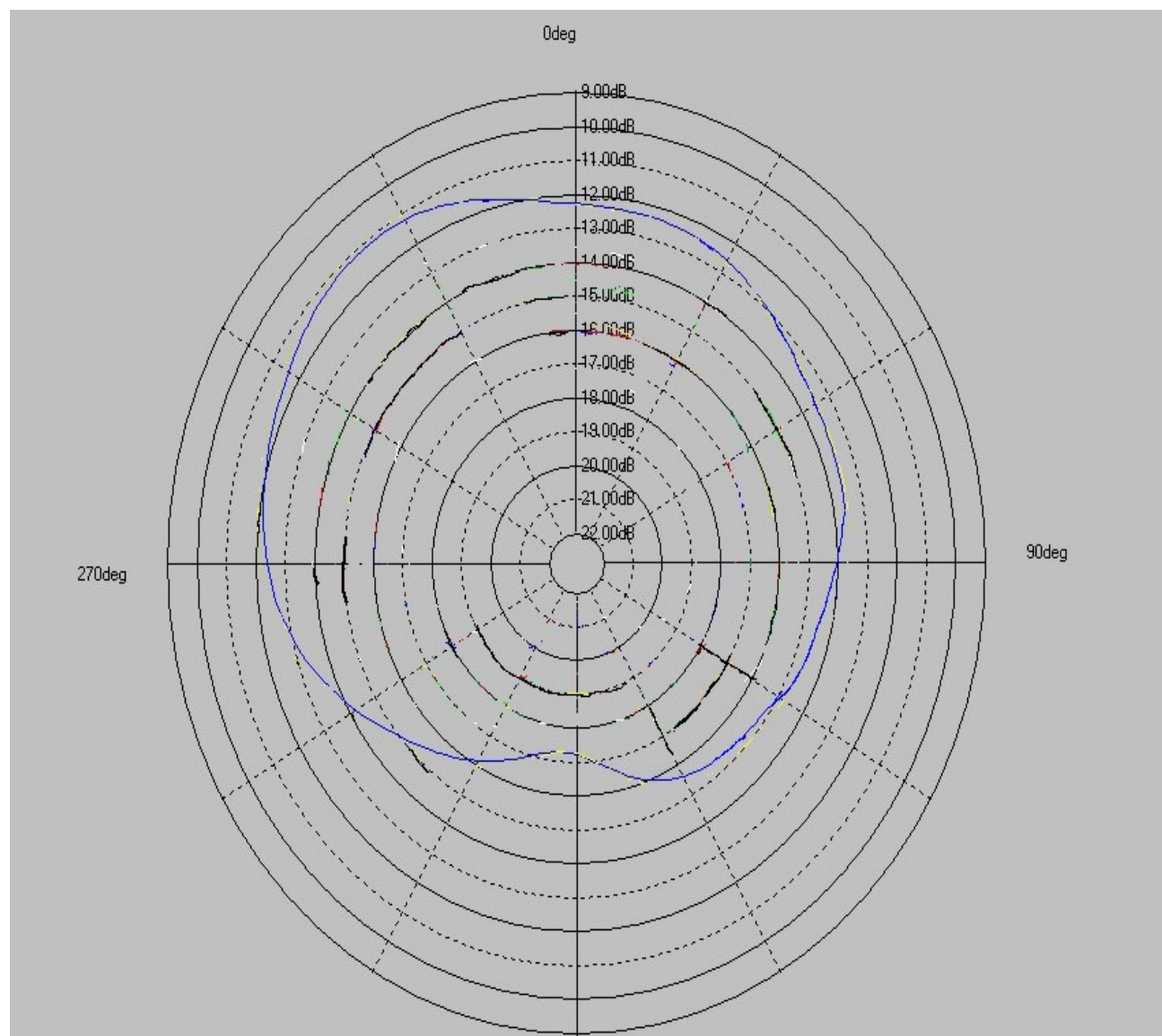
Date:

Time: **15:23:51**

Temperatuer (°C): **25**

Humidity (%): **75**

Approved by:



Frequency (MHz): 2468

Antenna Polarity: **Horizontal**

Average Gain (dB): **-4.64**

Maximum Gain (dB): **-1.35**

Maximum Gain (degree): **351**

Minimum Gain (dB): **-30.92**

Minimum Gain (degree): **186**

C:\Antenna Pattern V5.0\Graph\0818\08180020.png