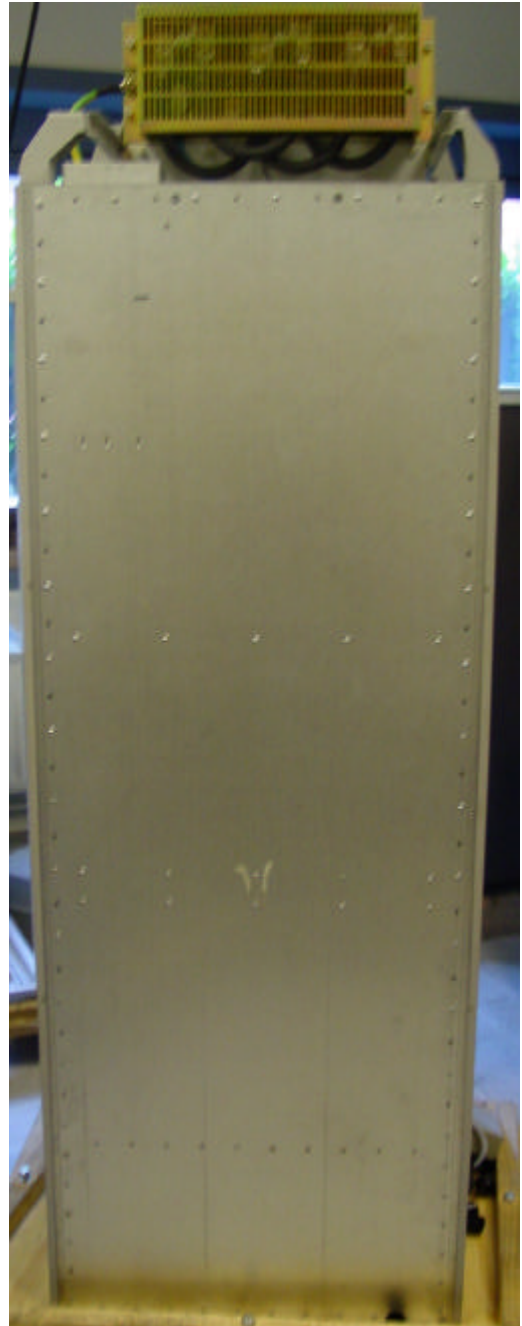


## **UMTS Indoor2 iBTS with optional +24/-55V DC/DC Converter pictures**



Front View with Optional DC Converter

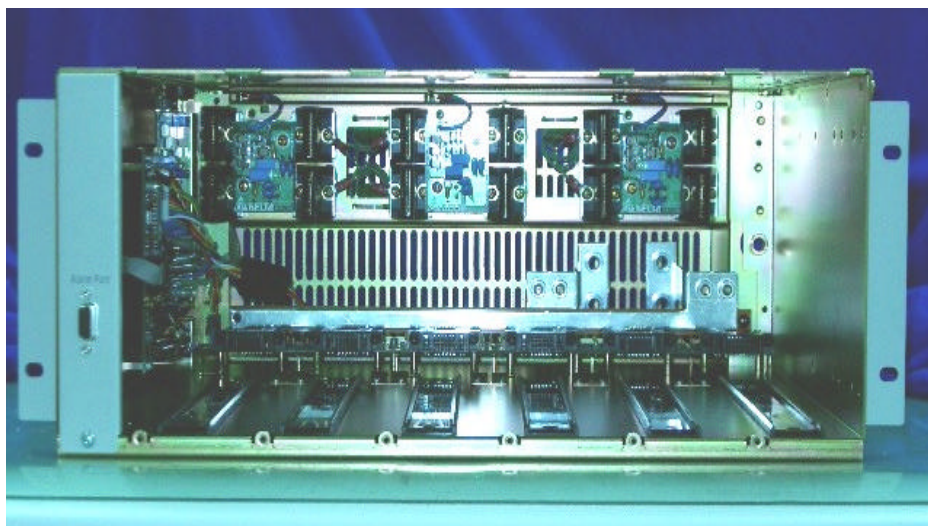


Back View with Optional DC Converter

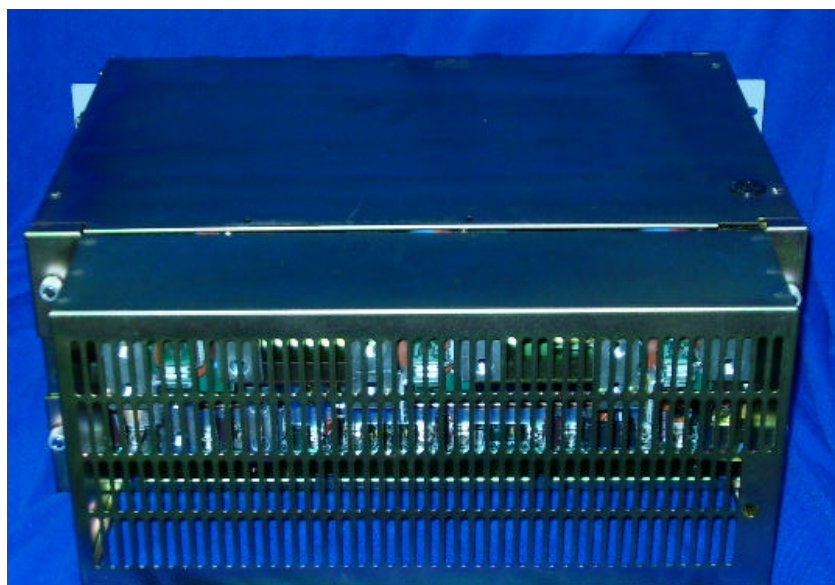


Side View with Optional DC Converter

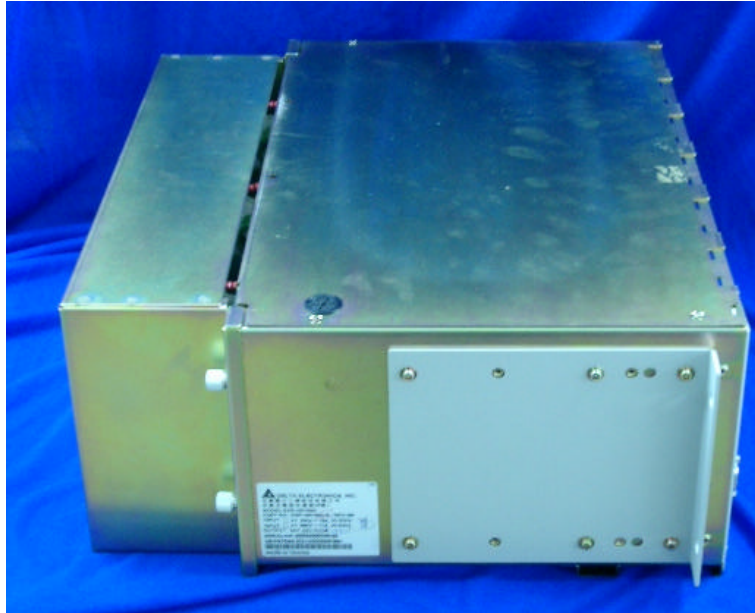
## Shelf Unit (Code: NTBY5103)



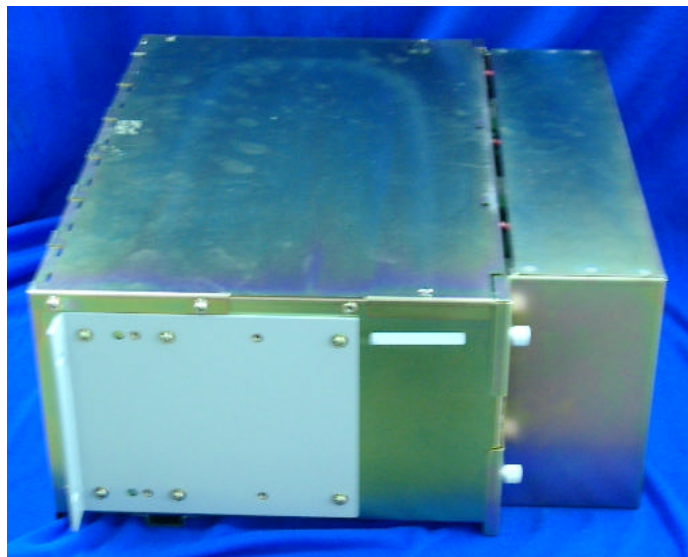
Front View



Rear View



Left Side View



Right Side View

## Converter Unit (Code: NTBY5101)



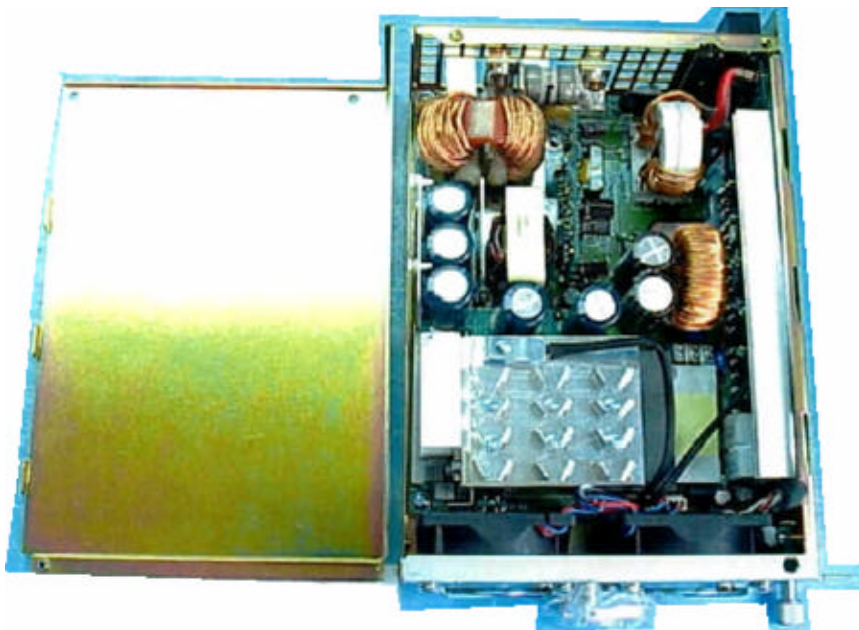
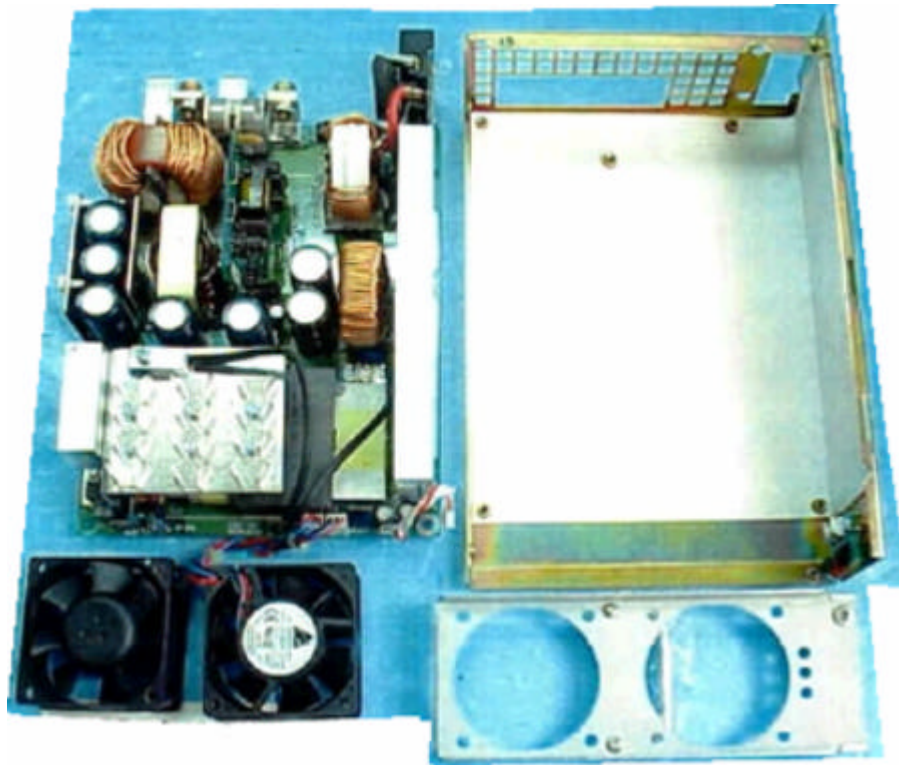
Front View

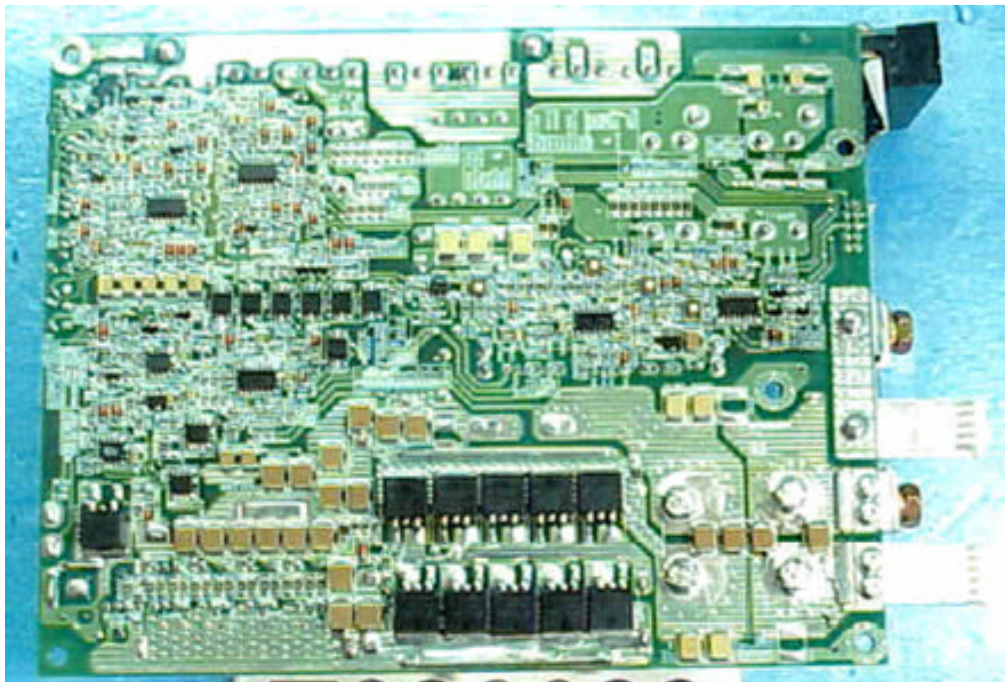


Side View



Rear View

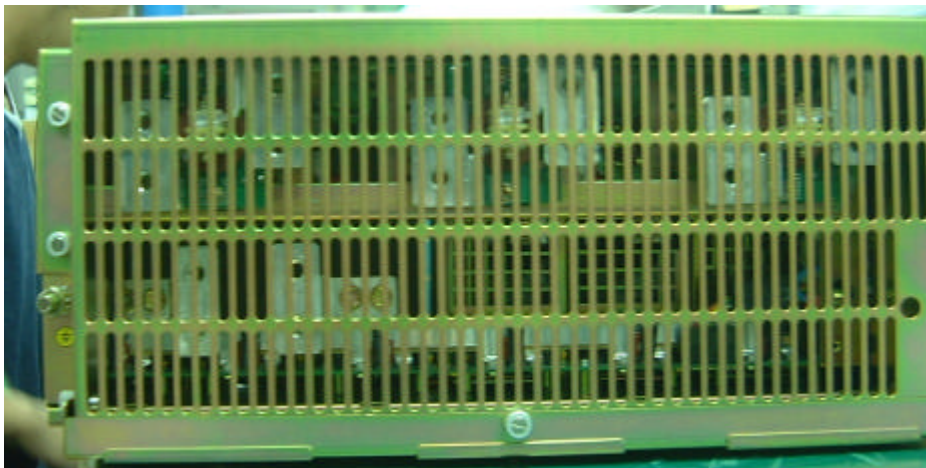




# **+24/-55V DC/DC Converter System (Code: NTBY51AA)**



Front View



Rear View



Internal Rear View



Internal Bottom View

## Blank Panel (Code: NTBY5102)



Front View



Rear View