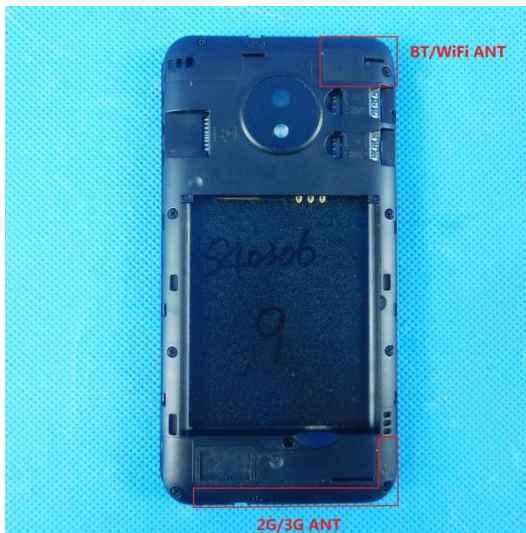
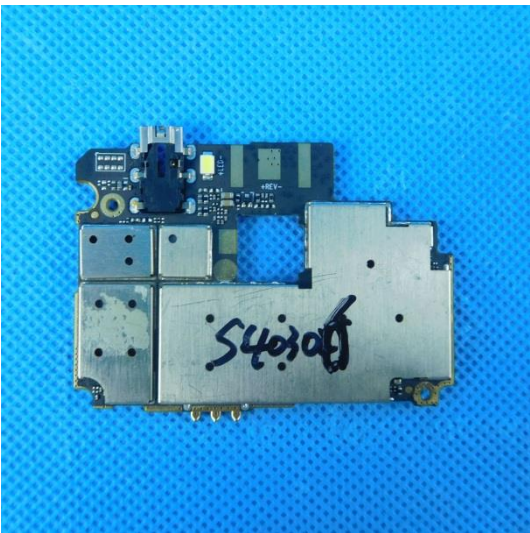
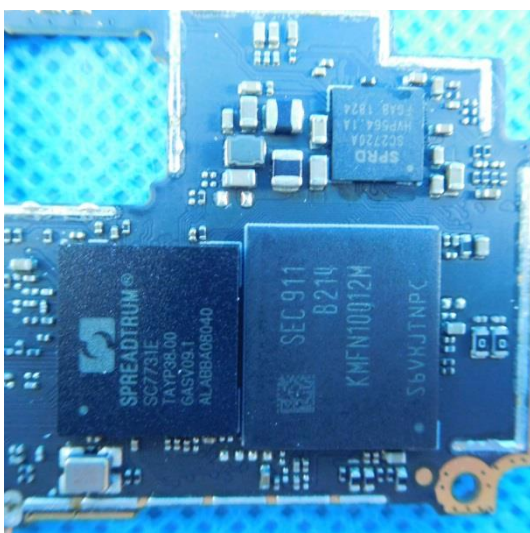
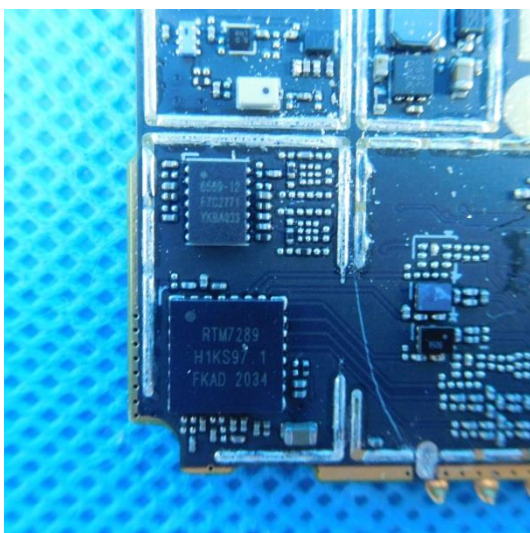


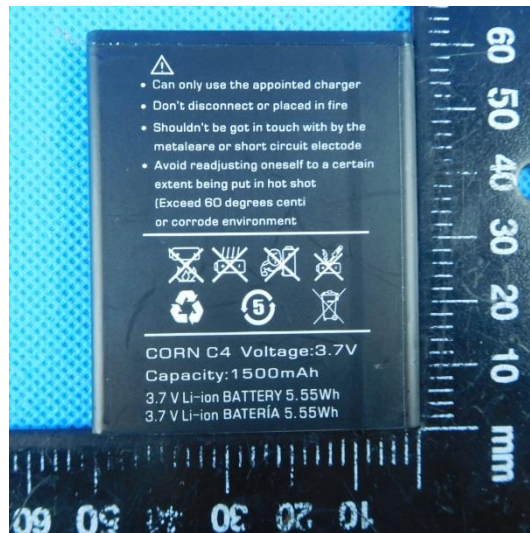
Model:X4

Internal photos of the EUT









- Can only use the appointed charger
- Don't disconnect or placed in fire
- Shouldn't be got in touch with by the metaleare or short circuit electrode
- Avoid readjusting oneself to a certain extent being put in hot shot
(Exceed 60 degrees centi
or corrode environment



CORN C4 Voltage:3.7V
Capacity: 1500mAh
3.7 V Li-ion BATTERY 5.55Wh
3.7 V Li-ion BATERIA 5.55Wh