

Truly Wire-Free Earbuds

User's Guide for Model IAEBT209 v2758-01

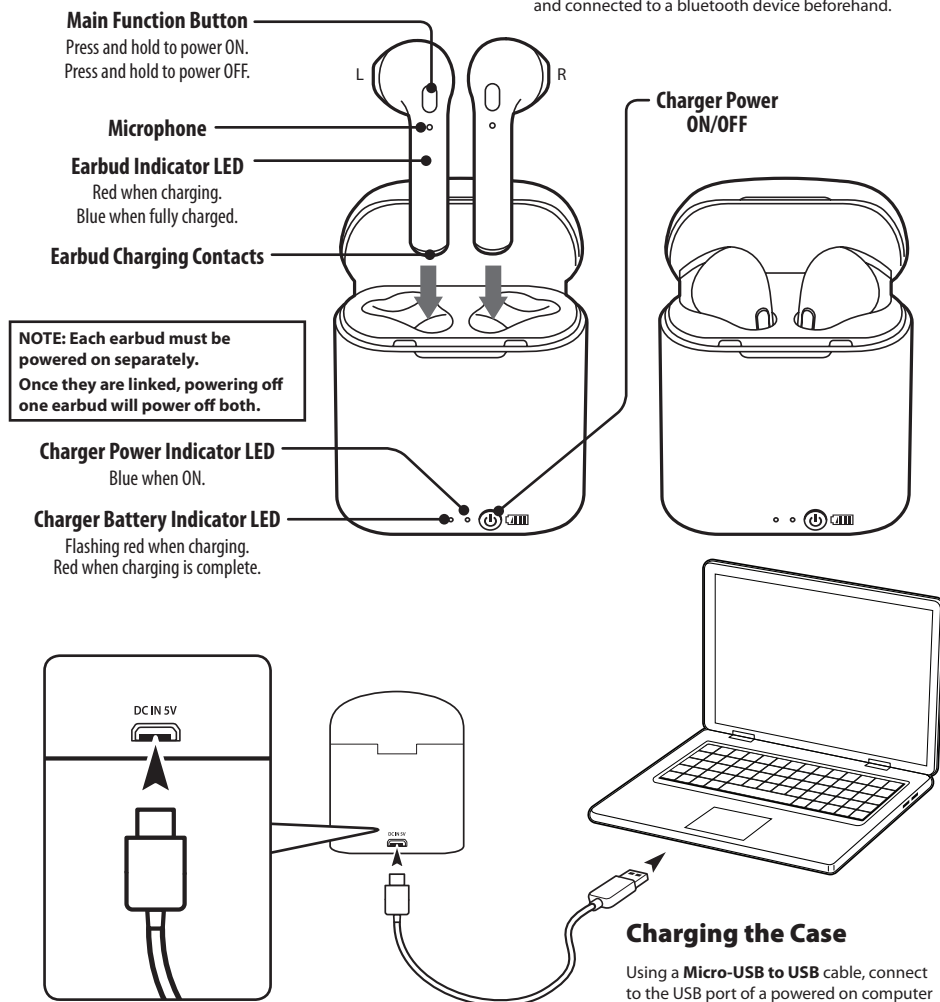


Charging the Earbuds

1. Open the cover and place the earbuds in their docking stations. Be sure to press down so the earbuds make contact with the charging contacts.
2. When charging, the indicator LEDs on the earbuds will turn red. When charging is complete, the indicators will turn blue.

Notes On Charging and Use

- Each earbud must be powered on separately.
- Once the earbuds are linked, powering off one earbud will power off both.
- Placing the earbuds in the charging case will automatically power them off.
- Removing the earbuds from the case will automatically power them on, link them, and connect to the last used Bluetooth device. The earbuds must have been linked and connected to a bluetooth device beforehand.



Charging Case & Auto-On Feature

1. Placing the earbuds in the charging case will automatically power them off and begin charging.
2. Removing the earbuds from the case will automatically power them on, link them, and connect to the last used Bluetooth device (earbuds must have been linked and connected to a Bluetooth device already).

Initial Linking of Earbuds & Pairing to a Bluetooth Device

1. To link the earbuds manually, press and hold the **Function** button **on both earbuds** until they start blinking blue and red. They will automatically pair with each other, when successfully linked, one of the earbud's indicator LEDs will begin blinking blue and red. A voice prompt will also announce the connection.
2. With the earbuds linked, you can now connect to your Bluetooth device. The **LED indicator** on one of the earbuds will flashing blue and red, indicating it is ready to pair to a Bluetooth device.
3. On your Bluetooth device, access Bluetooth Settings and search for nearby devices. Select **IAEBT209** when it is discovered. When successfully connected to your Bluetooth device, the LED indicator will slowly flash blue and a voice prompt will announce the connection.
4. Audio played through the connected Bluetooth device will now be heard through both earbuds. Use the controls on the connected device to play audio and adjust volume.

PLEASE NOTE: Due to the nature of truly wireless earbuds, you may experience slight interruptions with your audio in areas with multiple 2.4Ghz bands or in high wireless traffic areas.

Speakerphone

1. To accept a call, press the **Function** button, or use the controls on the connected phone. To end a call, press the **Function** button again.
2. To re-dial the last dialed number, press the **Function** button twice.

Customer Support

Customer Service: 1-888-999-4215 | **Email Support:** prodinfo@dpiinc.com | **Email Parts:** partsinfo@dpiinc.com

For Warranty Information and the most up-to-date version of this User's Guide, go to **www.iLiveElectronics.com**

To download this User's Guide in English, Spanish, or French, or to get answers to frequently asked questions, visit the support section at: **www.iLiveElectronics.com**

Para descargar este Manual del Usuario en inglés, español y francés, o para obtener respuestas a preguntas frecuentes, visite la sección de apoyo en: **www.iLiveElectronics.com**

Pour télécharger ce guide de l'utilisateur en anglais, espagnol ou français, ou pour obtenir des réponses à des questions fréquemment posées, consultez la rubrique d'assistance sur: **www.iLiveElectronics.com**

Copyright © 2019 Digital Products International (DPI, Inc.) All other trademarks appearing herein are the property of their respective owners. Specifications are subject to change without notice.

FCC Warnings

WARNING: Changes or modifications to this unit not expressly approved by the party responsible for compliance could void the user's authority to operate the equipment.

NOTE: This equipment has been tested and found to comply with the limits for a Class B digital device, pursuant to Part 15 of the FCC Rules. These limits are designed to provide reasonable protection against harmful interference in a residential installation. This equipment generates, uses, and can radiate radio frequency energy and, if not installed and used in accordance with the instructions, may cause harmful interference to radio communications. However, there is no guarantee that interference will not occur in a particular installation. If this equipment does cause harmful interference to radio or television reception, which can be determined by turning the equipment off and on, the user is encouraged to try to correct the interference by one or more of the following measures:

- Reorient or relocate the receiving antenna.
- Increase the separation between the equipment and receiver.
- Connect the equipment into an outlet on a circuit different from that to which the receiver is connected.
- Consult the dealer or an experienced radio/TV technician for help.

THIS DEVICE COMPLIES WITH PART 15 OF THE FCC RULES. OPERATION IS SUBJECT TO THE FOLLOWING TWO CONDITIONS: (1) THIS DEVICE MAY NOT CAUSE HARMFUL INTERFERENCE, AND (2) THIS DEVICE MUST ACCEPT ANY INTERFERENCE RECEIVED, INCLUDING INTERFERENCE THAT MAY CAUSE UNDESIRABLE OPERATION.

Additional Warnings

- **WARNING:** To prevent fire or shock hazards, do not expose this unit to rain or moisture.
- **WARNING :** Where the mains plug or appliance coupler is used as the disconnect device, such disconnect device shall remain readily operable.
- Lithium batteries, like all rechargeable batteries, are recyclable and should be recycled or disposed of according to state and local guidelines. They should never be disposed of in normal household waste, and they should never be incinerated, as they might explode. Contact your local government for disposal or recycling practices in your area.
- This product meets and complies with all Federal regulations.
- **To avoid hearing damage,** make sure that the volume on your music player is turned down before connecting your headphones. After placing headphones in/on your ears, gradually turn up the volume until you reach a comfortable listening level.



"WARNING : Cancer and Reproductive harm - www.P65Warnings.ca.gov."

For Earbuds, FCC ID: 2AH16IAEBT209