

**GRAPHICAL TEST RESULTS
PART 13
FOR RFI TEST REPORT SERIAL NO:
RFI/MICB1/RP42151A**

Test Of: Adaptive Broadband Ltd.
AB Access EXTENDER

To: FCC Part 15: Subpart E: 2000
(Unlicensed National Information Infrastructure Devices)

Radio Frequency Investigation Ltd, Ewhurst Park, Ramsdell,
Basingstoke, Hampshire, RG26 5RQ, ENGLAND.
Tel: +44 (0) 1256 851193 Fax: +44 (0) 1256 851192

Registered in England, No. 211 7901.
Registered Office: Ewhurst Park, Ramsdell,
Basingstoke, Hampshire RG26 5RQ



TESTING
0644

Test Of: Adaptive Broadband Ltd.**AB Access EXTENDER****To: FCC Part 15: Subpart E: 2000****(Unlicensed National Information Infrastructure Devices)**

This section contains the following graphs:

Graph Reference Number	Title
GPH/42151JD01/501	Radiated Emissions screen room scan, Receive Mode Channel 10, (30 MHz to 1 GHz)
GPH/42151JD01/502	Radiated Emissions screen room scan, Transmit Mode Channel 10, Horizontal, (30 MHz to 1 GHz)
GPH/42151JD01/503	Radiated Emissions screen room scan, Receive Mode Channel 12, (30 MHz to 1 GHz)
GPH/42151JD01/504	Radiated Emissions screen room scan, Transmit Mode Channel 12, Horizontal, (30 MHz to 1 GHz)
GPH/42151JD01/505	Radiated Emissions screen room scan, Transmit Mode Channel 12, Vertical, (30 MHz to 1 GHz)
GPH/42151JD01/506	Radiated Emissions screen room scan, Transmit Mode Channel 14, Vertical, (30 MHz to 1 GHz)
GPH/42151JD01/507	Radiated Emissions screen room scan, Transmit Mode Channel 14, Horizontal, (30 MHz to 1 GHz)
GPH/42151JD01/508	Radiated Emissions screen room scan, Receive Mode Channel 14, (30 MHz to 1 GHz)

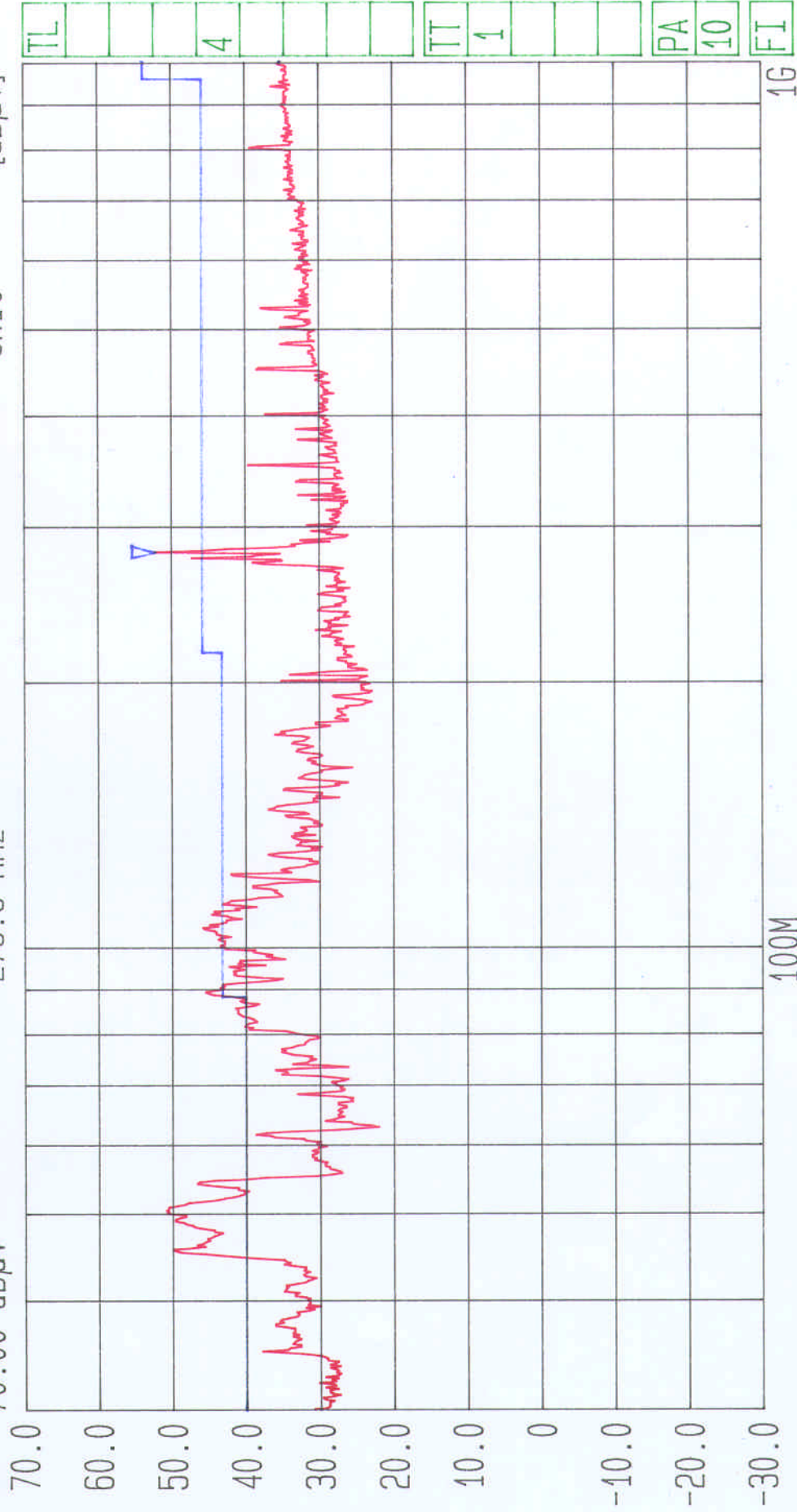
Date 20.Apr.'01 Time 11:57:46

Ref.Lvl 70.00 dBμV

Marker 52.33 dBμV
279.6 MHz

Res.Bw 120 kHz [imp]
TG.Lvl Off
CF.Stp 97.000 MHz

Vid.Bw 300 kHz
RF.Att 0 dB
Unit [dBμV]



Start 30 MHz

Span 970 MHz

Center 173.2 MHz

Sweep 380 ms

Stop 1 GHz

Radiated screened room scan. Tested by RFI for Adaptive Broadband. Part 15.209
EUT: SU Backhaul. Transmit mode. Channel 10. V polarity. GPH/42151JD01/500

Date 19.Apr.'01 Time 11:40:55

Ref.Lvl 70.00 dBμV

Marker 54.62 dBμV

280.7 MHz

Res.Bw 120 kHz [imp]

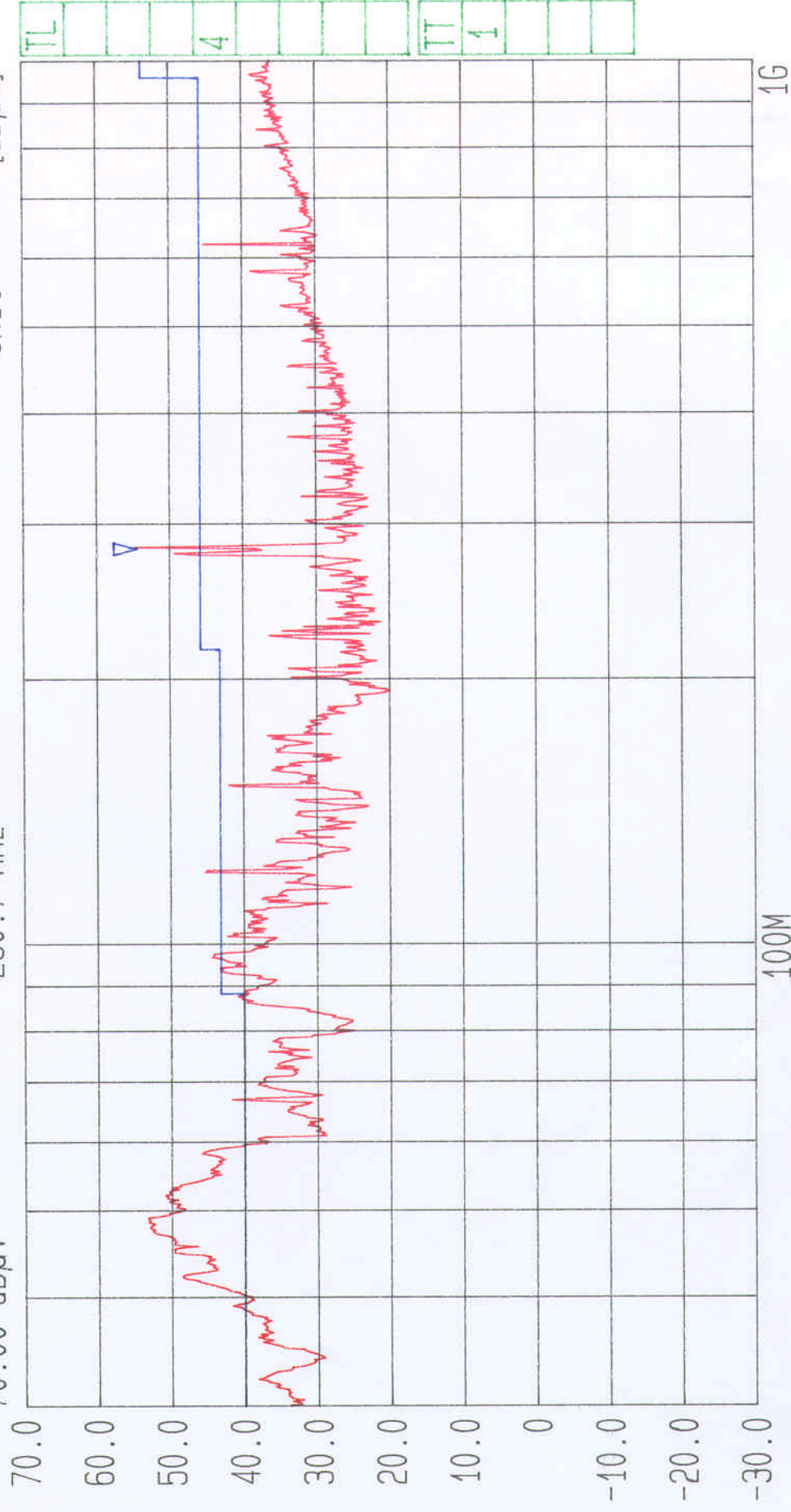
TG.Lvl off

CF.Stp 97.000 MHz

RF.Att 0 dB

Unit [dBμV]

Vid.Bw 300 kHz



Start 30 MHz

Span 970 MHz

Center 173.2 MHz

Sweep 380 ms

Stop 1 GHz

Radiated screened room scan. Tested by RFI for Adaptive Broadband. Part 15.209
EUT: SU Backhaul. Receive mode. Channel 10. GPH/42151JD01/501

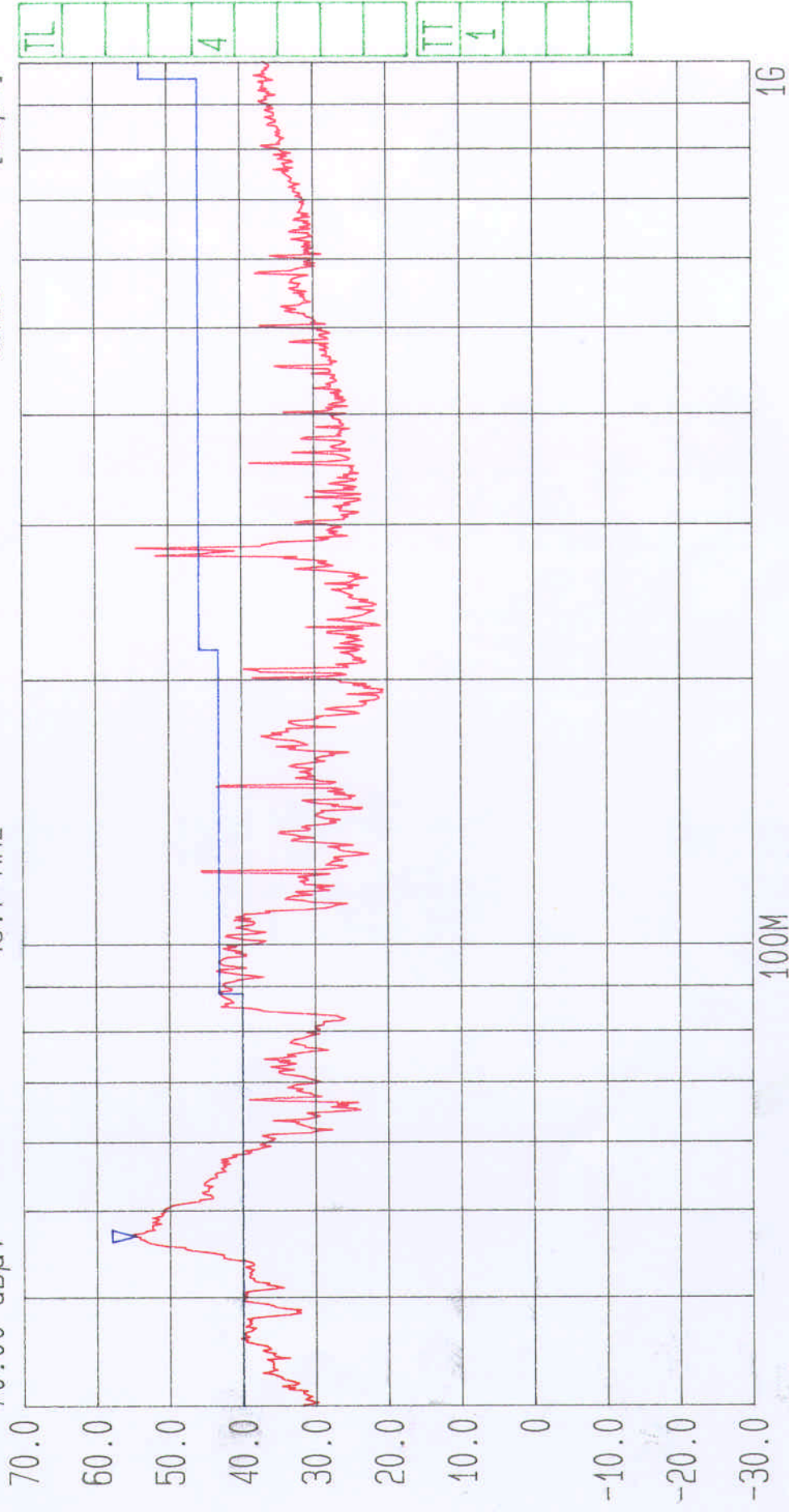
Date 19.Apr.'01 Time 12:02:35

Ref.Lvl 70.00 dBμV

Marker 55.00 dBμV
46.7 MHz

Res.Bw 120 kHz [imp]
TG.Lvl off
CF.Stp 97.000 MHz

Vid.Bw 300 kHz
RF.Att 0 dB
Unit [dBμV]



Start 30 MHz

Span 970 MHz

Center 173.2 MHz

Sweep 380 ms

Stop 1 GHz

Radiated screened room scan. Tested by RFI for Adaptive Broadband. Part 15.209
EUT: SU Backhaul. Transmit mode. Channel 10. Hor. Pol. GPH/42151JD01/502

Date 20.Apr.'01 Time 09:22:49

Ref.Lvl 70.00 dBuV

Marker 51.70 dBuV

279.6 MHz

Res.Bw 120 kHz [imp]

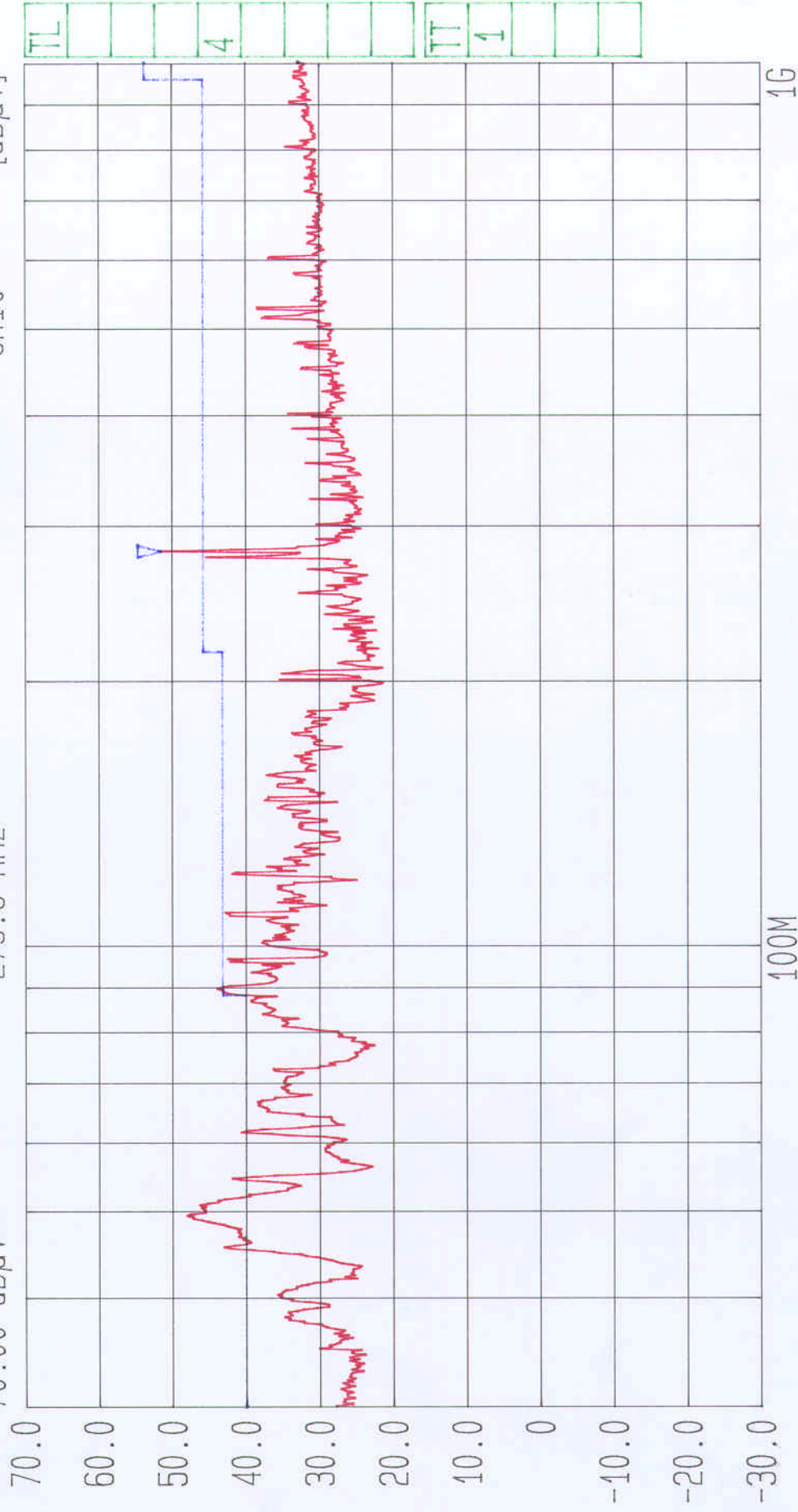
TG.Lvl off

CF.Stp 97.000 MHz

Vid.Bw 300 kHz

RF.Att 0 dB

Unit [dBuV]



Start 30 MHz

Span 970 MHz

Center 173.2 MHz

Sweep 380 ms

Stop 1 GHz

Radiated screened room scan. Tested by RFI for Adaptive Broadband. Part 15.209
EUT: Backhaul. Receive mode. Channel 12. GPH/42151JD01/503

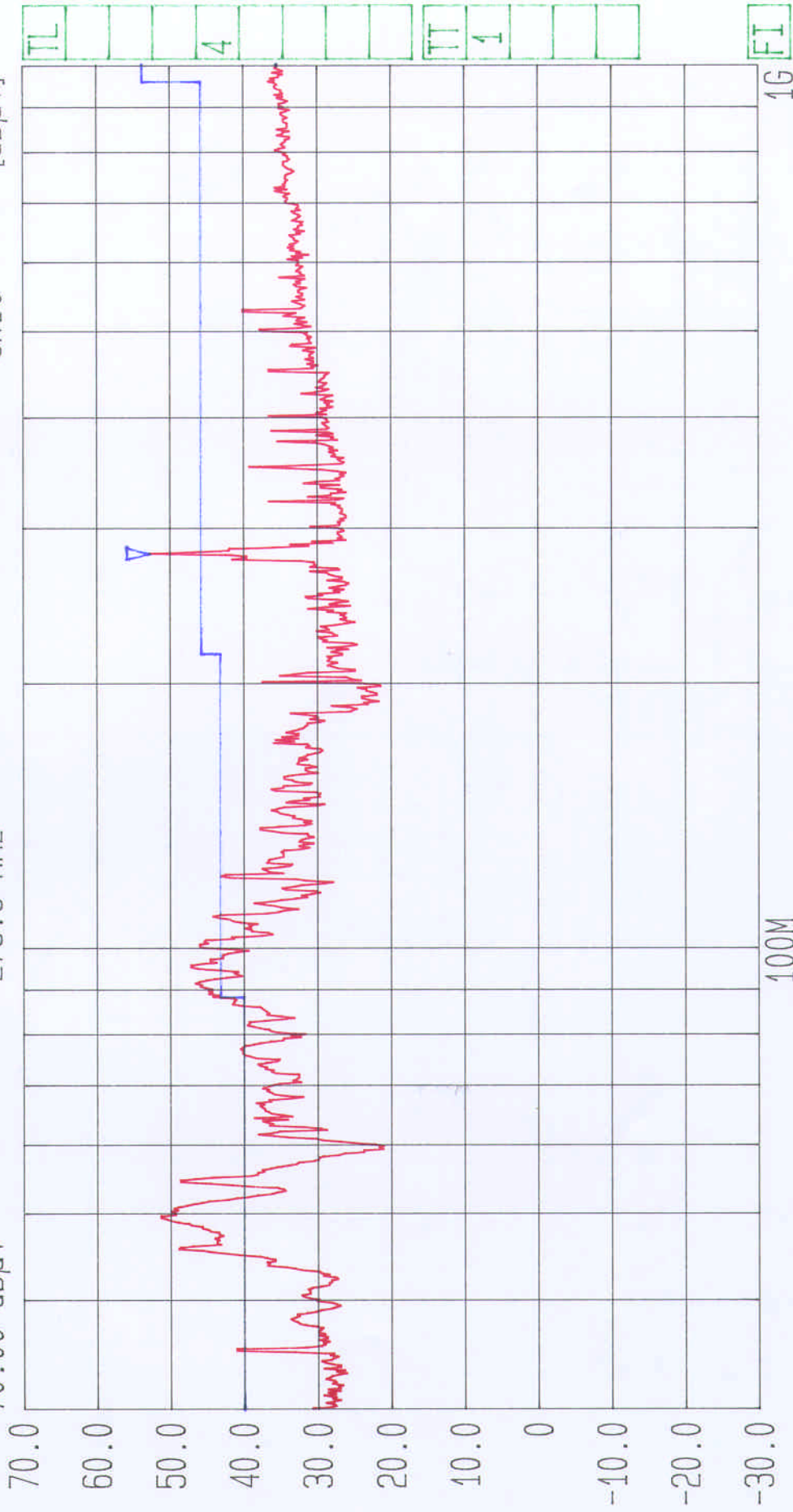
Date 20.Apr.'01 Time 09:42:08

Ref.Lvl 70.00 dBuV

Marker 52.89 dBuV
279.6 MHz

Res.Bw 120 kHz [imp]
TG.Lvl Off
CF.Stp 97.000 MHz

Vid.Bw 300 kHz
RF.Att 0 dB
Unit [dBuV]



Start 30 MHz

Span 970 MHz

Center 173.2 MHz

Sweep 380 ms

Stop 1 GHz

Radiated screened room scan. Tested by RFI for Adaptive Broadband. Part 15.209
EUT: Backhaul. Transmit mode. Channel 12. H polarity GPH/42151JD01/504

Date 20.Apr.'01 Time 10:02:45

Ref.Lvl 70.00 dBuV

Marker 49.28 dBuV

275.3 MHz

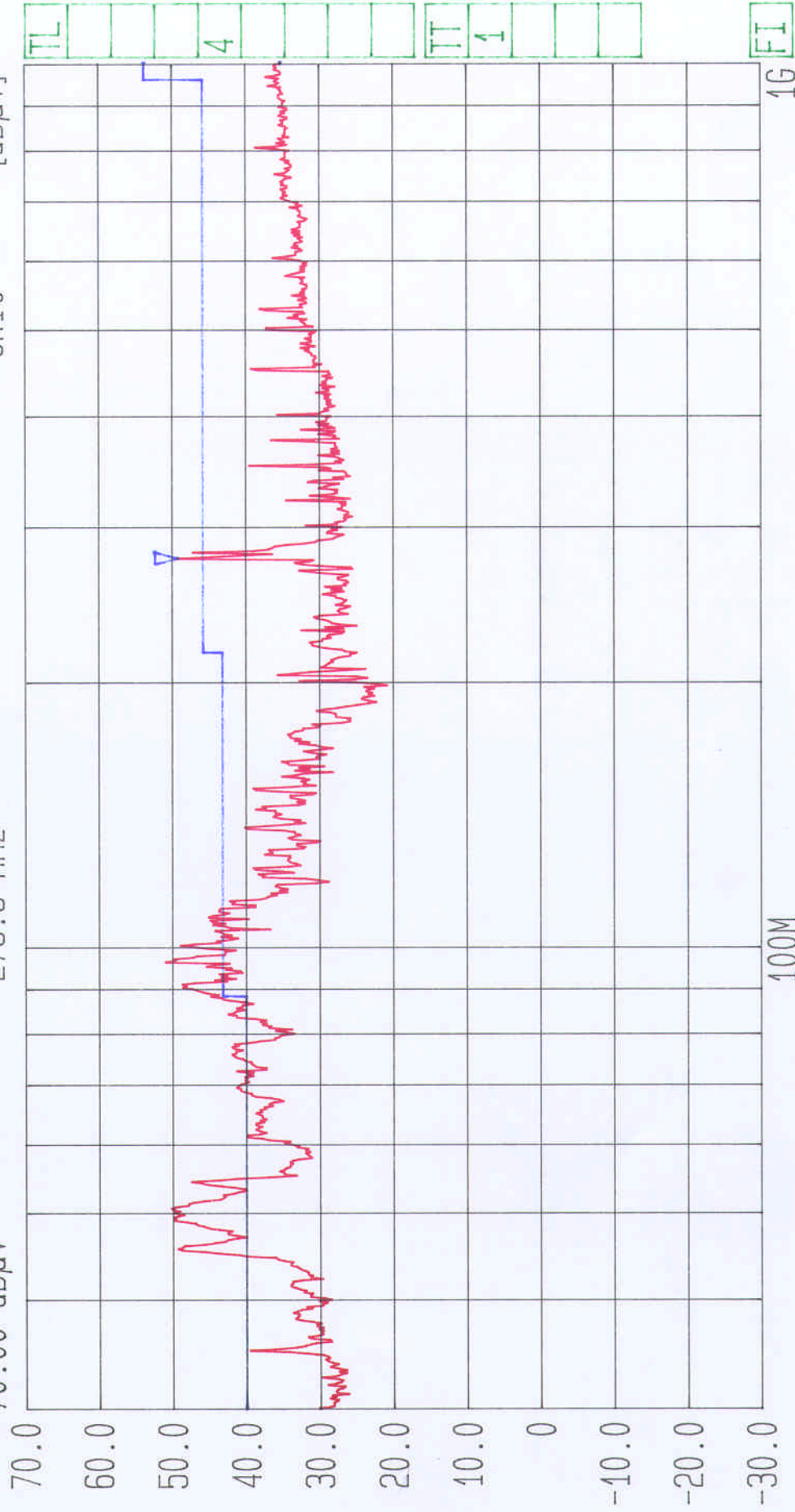
Res.Bw 120 kHz [imp]

TG.Lvl off

Vid.Bw 300 kHz

RF.Att 0 dB

Unit [dBuV]



Start 30 MHz

Span 970 MHz

Center 173.2 MHz

Sweep 380 ms

Stop 1 GHz

Radiated screened room scan. Tested by RFI for Adaptive Broadband. Part 15.209
EUT: Backhaul. Transmit mode. Channel 12. V polarity GPH/42151JD01/505

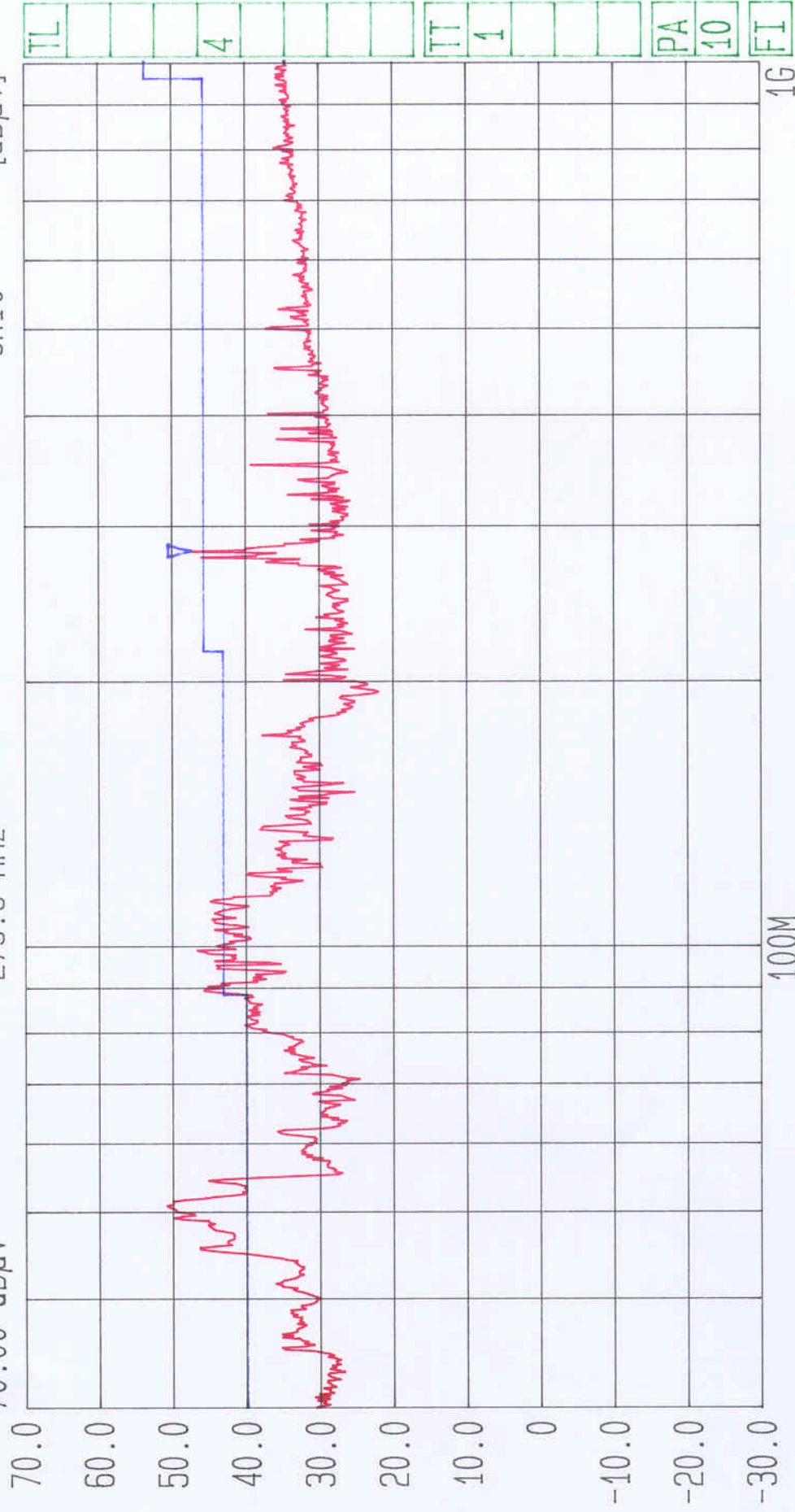
Date 20.Apr.'01 Time 10:23:19

Ref.Lvl1 70.00 dB μ V

Marker 47.51 dB μ V

279.6 MHz

Res.Bw 120 kHz [imp]
TG.Lvl1 off
CF.Stp 97.000 MHz
Vid.Bw 300 kHz
RF.Att 0 dB
Unit [dB μ V]



Start 30 MHz

Span 970 MHz

Center 173.2 MHz

Sweep 380 ms

Stop 1 GHz

Radiated screened room scan. Tested by RFI for Adaptive Broadband. Part 15.209
EUT: Backhaul. Transmit mode. Channel 14. V polarity GPH/42151JD01/506

Date 20.Apr.'01 Time 10:50:20

Ref.Lvl
70.00 dBuV

Marker
50.96 dBuV
279.6 MHz

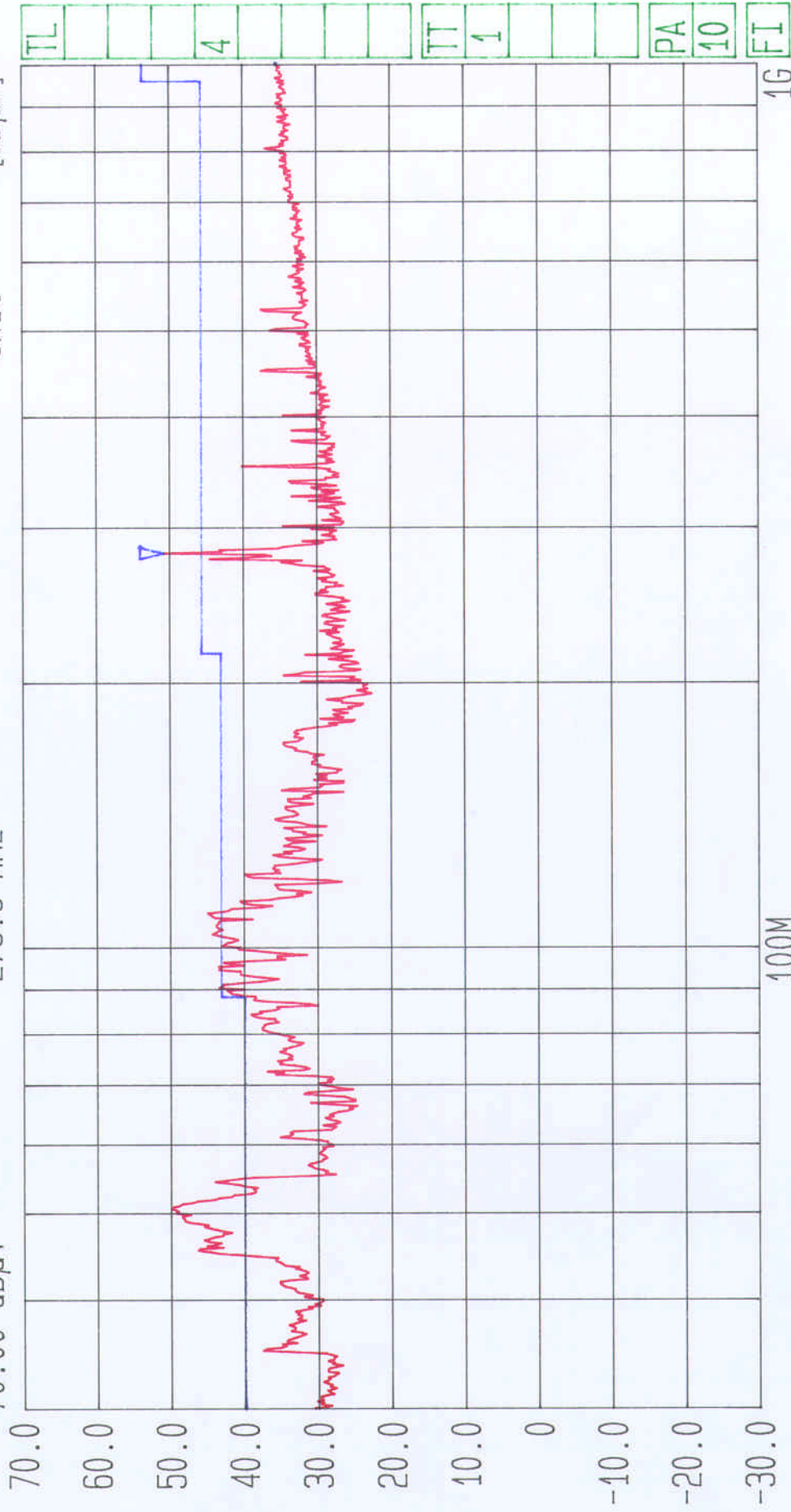
Res.Bw
120 kHz [imp]

TG.Lvl
off

Vid.Bw
300 kHz

RF.Att
0 dB

Unit
[dBuV]



Start
30 MHz

Span
970 MHz

Center
173.2 MHz

Sweep
80 ms

Stop
1 GHz

Radiated screened room scan. Tested by RFI for Adaptive Broadband. Part 15.209
EUT: Backhaul. Transmit mode. Channel 14. H polarity GPH/42151JD01/507

Date 20.Apr.'01 Time 10:58:14

Ref.Lvl
70.00 dBuV

Marker

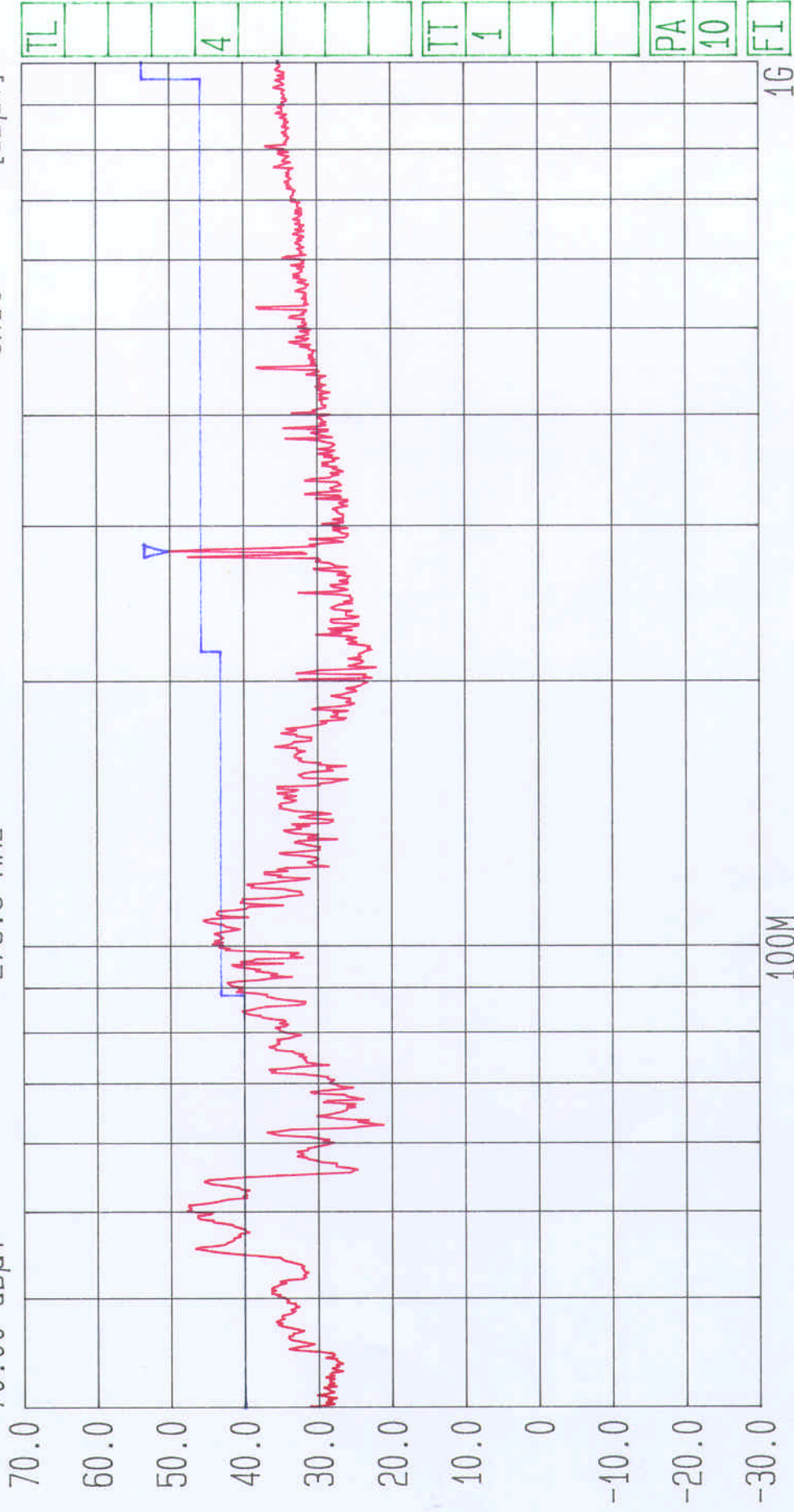
50.30 dBuV
279.6 MHz

Res.Bw
TG.Lvl
CF.Stp

120 kHz [imp]
Off
97.000 MHz

Vid.Bw
RF.Att
Unit

300 kHz
0 dB
[dBuV]



Start
30 MHz

Span
970 MHz

Center
173.2 MHz

Sweep
380 ms

Stop
1 GHz

Radiated screened room scan. Tested by RFI for Adaptive Broadband. Part 15.209
EUT: Backhaul. Receive mode. Channel 14. GPH/42151JD01/508