

料号:  
品名: 说明书  
规格: 100\*120mm  
材质: 书纸  
印刷: 单黑印刷  
装订方式: 骑马订  
备注: 封面封底的背面为空白

## Mini PC

User Manual

Now, the equipment has been tested and designed to comply with the limits for a Class B digital device, pursuant to part 15 of the FCC Rules. These tests were designed to provide reasonable assurance that interference will not occur under normal operating conditions. This equipment generates, uses and can radiate radio frequency energy and, if not installed and used in accordance with the instructions, may cause harmful interference to radio communications. However, there is no guarantee that interference will not occur in a particular installation. Therefore, if interference should occur, the user is encouraged to try to correct the interference by one or more of the following measures:

- Reorient or relocate the receiving antenna.
- Increase the separation between the equipment and receiver.
- Connect the equipment into an outlet on a circuit different from that to which the receiver is connected.
- Consult the dealer or an experienced radio/television technician for help.

This device complies with part 15 of FCC Rules. Operation is subject to the following two conditions:

1. This device may not cause harmful interference.
2. This device must accept any interference received, including interference that may cause undesired operation.

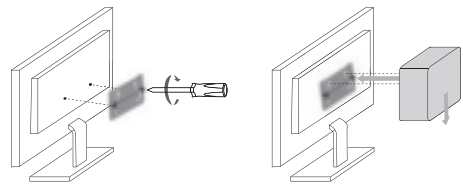
Any changes or modifications not expressly approved by the party responsible for compliance could void the user's authority to operate the equipment.

This equipment complies with FCC radiation exposure limits set forth for an uncontrolled environment. This equipment should be installed and operated with minimum distance 20 cm between the radiator and your body.

[illegible]

Mini PC*1	Power Adapter*1
User Manual*1	Hard disk fixing screws*4
Mini PC copper fixing screws*2	HDMI Cable*1
VESA Mounting Bracket*1	VESA Mounting Bracket Screws*2

### Installation of VESA bracket



### Tips and FAQ

1. Turn off your Mini PC.  
If your Mini PC does not respond, press the power button for at least 4-6 seconds until your Mini PC is turned on.
2. Boot into the system for the first time  
If you start-up your PC for the first time, you will be guided to configure your Windows operating system.
3. Start-up your Mini PC for the first time.  
Press the PCs power button. Wait for a few minutes until it starts up.  
Step 1: Select language/country/region  
Step 2: Select the keyboard type  
Step 3: Select the second input method, which can be "skipped"  
Step 4: Networking  
After selecting wifi, enter password is correct. If it chooses to install an internet card for a long time, the network will be updated automatically. And the update process will start on an interface for a long time, which prolongs the start-up time. (Skipping network connections is strongly recommended)  
Step 5: Set User Name and Password  
During the installation process, the desktop will appear.

1. Connect Wi-Fi. Connect PC to the Wi-Fi network using the following steps:
  - Click the Wi-Fi icon in the taskbar.
  - Click the Wi-Fi icon to open the Wi-Fi connections.
  - Select the Wi-Fi connection that you want to connect to.
2. Note that the PC must be in the list of available Wi-Fi connections. Select one of the connections to start the network connection.
3. Note that you may need to enter a security key to activate a Wi-Fi connection.
4. Enter the BIOS/UEFI settings.
  - The BIOS/UEFI basic input/output system is the first software loaded when the Miele PC starts.
  - Press the **DEL** or **F2** key to enter the BIOS/UEFI settings.
  - Under normal circumstances, the default BIOS/UEFI settings apply in most cases to ensure optimal performance of the Miele PC.
  - If you need to change the BIOS/UEFI settings, you must enter the BIOS/UEFI settings. (We have installed new system components that require further BIOS/UEFI settings of access.)
5. Note that you may need to enter a security key or password before you can change the BIOS/UEFI settings. We strongly recommend that you set a secure BIOS/UEFI settings to help the technical service personnel.