

Cover OUTSIDE

11" (27.9cm)

LUMO STUNT DRONE

Sharper Image® name and logo (including the 77 logo) are trademarks or registered trademarks. Distributed by and © 2022 MerchSource, LLC, Irvine, CA 92618. All rights reserved.

For customer support, please visit: www.merchsource.com or call 1-800-374-2744.

The artwork and design of this manual are protected by US copyright law and may not be reproduced, distributed, displayed, published or used for any purpose without prior written permission. It is not permitted to alter, remove or reproduce any trademarks or copyright notice from this manual.

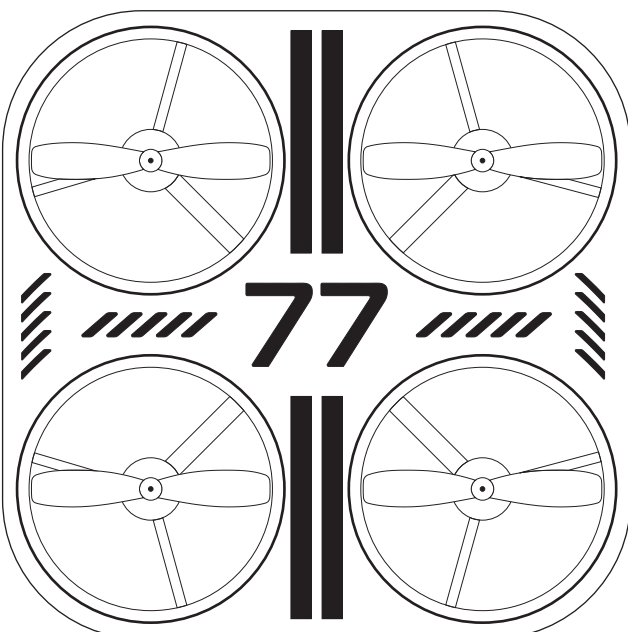
BC

Printed in China

LUMO STUNT DRONE

14+

INSTRUCTION MANUAL



Adult Assembly Required

KEEP THIS INSTRUCTION MANUAL AS IT CONTAINS IMPORTANT INFORMATION FOR FUTURE REFERENCE.

Due to continuous product improvements, the picture on the manual may differ slightly from the actual product.

WARNING: CHOKING HAZARD - Small Parts. Not for children under 3 years.

Cover INSIDE

INTRODUCTION

Congratulations on your purchase of the LUMO Stunt Drone.

It's time for some fun. This drone is capable of total controlled flight, fly up/down, left/right, and pitch forward or backward, on a 6-axis gyro stabilization. Includes USB charging cable, replacement blades and for auto orientation, auto take-off and auto landing control. The remote controller requires requires 4 AAA 1.5V batteries (not included). Alkaline batteries are recommended.

Please read all instructions and warnings in this manual prior to using your LUMO Stunt Drone, and keep this instruction manual as it contains important information for future reference. Adult assembly and a Phillips screwdriver will be required for battery installation.

Table of Contents

General Warnings	Page 2
Contents	Page 3
Remote Battery installation and Charging Battery	Page 4
Replacing Propellers	Page 5
Remote Overview	Page 6
Operating Drone	Page 7
Operating	Page 8
Other Features	Page 9

INTRODUCTION

1. Prepare for flight

- Drone must be charged before each use (Cable included).
- Indicator light on Drone will turn off when fully charged.
- Install batteries in remote.

2. Pair your drone

- Before each flight pair the remote with the drone:
- Turn your drone on and place on a flat, level surface.
- Turn on the remote.
- Push the left stick up and then down.
- Repeat steps 1 and 2 if necessary.

3. Calibrate

- Move both joysticks diagonally in toward the middle of the remote.

4. Remote Control Overview

Practice flying your drone indoors, below 10 feet, and at low speeds until comfortable with all controls to avoid unnecessary damage or injury.

- Left joystick: Up/Down controls elevation.
- Right joystick: controls flight direction.
- Direction Trim: Use to eliminate drift.
- Press the "Take Off Land" button to take off and land.
- To cut power to drone, press and hold red STOP button.

GENERAL WARNINGS

SAFETY WARNINGS

- Not recommended for children under 14 years of age. As with all electrical products, precautions should be observed during handling and use to reduce the risk of electrical shock.
- Adult supervision is required at all times.
- Never fly drones above or near people, sudden changes in wind or other conditions could lead to unexpected crashes.
- Always use caution when flying drone vehicles, obey relevant laws, respect the privacy and property rights of others.
- The drone shall never be modified or used for anything except its intended purpose.
- Before each use, an adult should review the product and battery to determine that no damage or hazards exist.
- DO NOT TOUCH SPINNING PROPELLERS.
- Do not allow anything to intentionally make contact in any way with spinning propellers or prevent contact with spinning blades by turning off remote prior to handling drone.
- Use caution and pay attention to your surroundings while operating drone.
- Do not fly drone into animals, people, or inanimate objects.
- Keep drone away from power lines, buildings, trees, public areas, and any other potentially hazardous areas.
- Do not operate in rain, heavy wind, and/or any type of severe weather.
- Do not land drone on wet surfaces.
- Never touch or allow others to touch drone while it is flying.
- Always turn drone off when it is not in use.
- Always fly drone in large open areas.

This device complies with Part 15 of the FCC Rules. Operation is subject to the following two conditions: (1) this device may not cause harmful interference, and (2) this device must accept any interference received, including interference that may cause undesired operation.

WARNING: Changes or modifications to this unit not expressly approved by the party responsible for compliance could void the user's authority to operate the equipment.

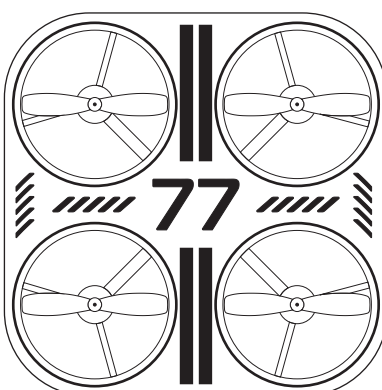
Note: This equipment has been tested and found to comply with the limits for a Class B digital device, pursuant to Part 15 of the FCC Rules. These limits are designed to provide reasonable protection against harmful interference in a residential installation. This equipment generates, uses and can radiate radio frequency energy and, if not installed and used in accordance with the instructions, may cause harmful interference to radio communications. However there is no guarantee that interference will not occur in a particular installation.

If this equipment does cause harmful interference to radio or television reception, which can be determined by turning the equipment off and on the user is encouraged to try to correct the interference by one or more of the following measures:

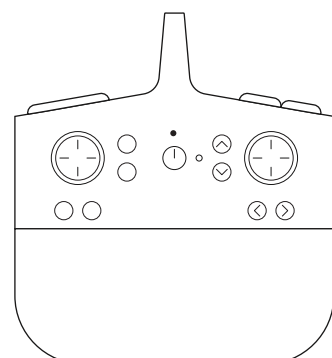
- Reorient or relocate the receiving antenna.
- Increase the separation between the equipment and receiver.
- Connect the equipment into an outlet on a circuit different from that to which the receiver is connected.
- Consult the dealer or an experienced radio/TV technician for help.

Fly-aways are the responsibility of the individual pilot and will not be replaced by the manufacturer.

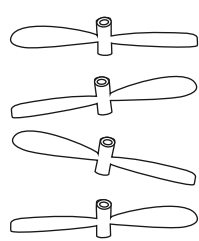
CONTENTS



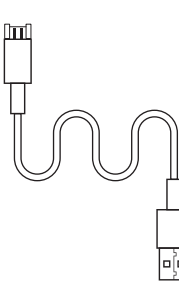
LED Drone



Drone Controller

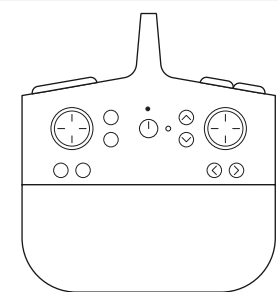


4 Replacement Propellers.



USB Charger Cable

REMOTE BATTERY INSTALLATION



**BATTERY WARNING-LITHIUM-POLYMER:**  
There is a risk of fire and personal injury if Li-Po battery is punctured, damaged or misused.  
• Never expose battery to extreme temperatures or moisture.  
• Do not subject battery to strong impacts.  
• Always keep battery away from flammable materials.  
• Only use manufacturer specified battery(ies), charger(s) and/or adapter, if applicable, specified by the manufacturer.  
• Battery is not serviceable.  
• Let battery cool to room temperature before charging.  
• While charging, never leave battery unattended.  
• Recycle or dispose of battery according to federal, state and local laws.  
**KEEP THIS PACKAGING FOR REFERENCE AS IT CONTAINS IMPORTANT INFORMATION.**

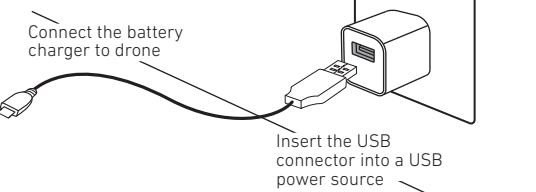
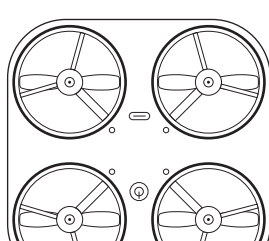
**BATTERY WARNING:**  
• Do not mix old and new batteries.  
• Insert batteries using the correct polarity. Do not short-circuit the supply terminal.  
• Remove batteries when not in use. Recycle or dispose of exhausted batteries according to federal, state, and local laws. Do not dispose of batteries in a fire - they may leak or explode.  
• Only use manufacturer specified battery(ies), charger(s) and/or adapter, if applicable, specified by the manufacturer.  
• Always use, replace, and recharge (if applicable) batteries under adult supervision.  
**KEEP THIS PACKAGING FOR REFERENCE AS IT CONTAINS IMPORTANT INFORMATION.**

1. Unscrew the screw at the bottom of the controller and then slide open the battery compartment.
2. Install 4 "AA" 1.5V batteries.
3. Replace and secure battery compartment with screw.

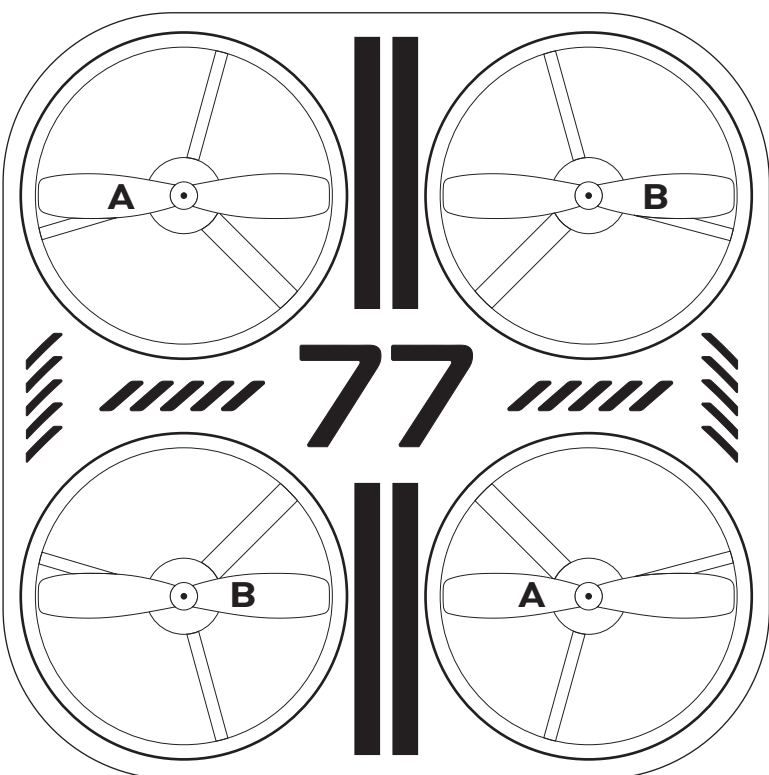
Charging Battery

1. Turn off the drone before charging.
2. Connect the battery charger cable to the charging port on the drone.
3. Connect USB connector to the power source.

Note: The drone will light up when it is charging and turn off when the battery is fully charged.

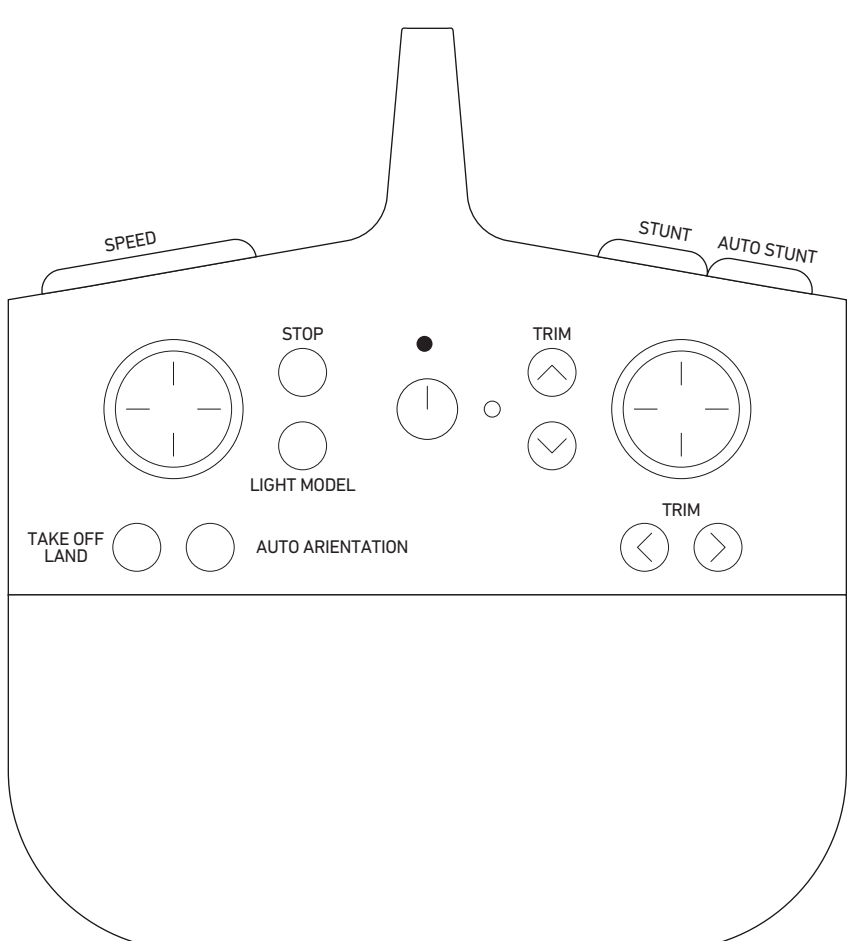


REPLACING PROPELLERS



- Only an adult should replace blades. To remove, pull up the blades directly.
- Push the power button on top of the drone and hold on 1-2s until LED lights on.
- Each blade spins differently. Blade B spins counter clockwise and Blade A spins clockwise.

REMOTE OVERVIEW



OPERATING DRONE

Step 1 - Pre-Flight Checklist

1. Read all warnings and instructions.
2. Install remote batteries, page 4.
3. Charge batteries, page 4.
4. Make sure that the drone and remote are powered off.

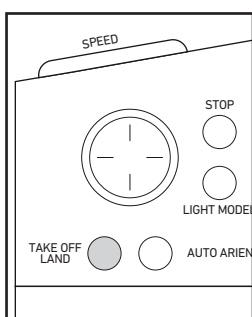
Step 2 - Choosing a location

- Drone is designed to be flown indoors and outdoors.
- Always make sure you have enough space to fly drone.
- Always follow warnings, page 2.

Step 3 - Pre-Flight

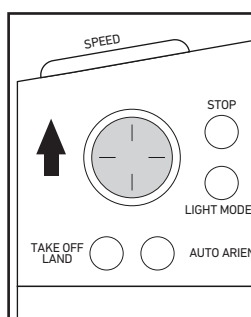
- Make sure your remote is off.
- Push the power button on top of the drone and hold on 1-2s until LED lights on.
- Place drone on a flat even surface. For ease of control, the blue lights should be toward you.
- Turn on the Remote controller: Push the left stick up and then down.
- The drone's lights will flicker during the pairing process and then remain on once it has paired.

Step 4 - Lift Off



Press the Take off Land Button.

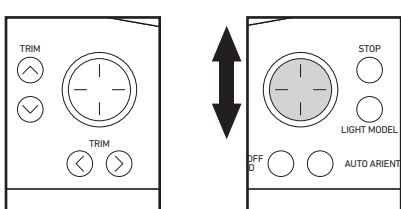
OR



Slowly and carefully press the Throttle stick up. Drone will begin to elevate.

OPERATING

Step 5 - Operating Drone in Flight



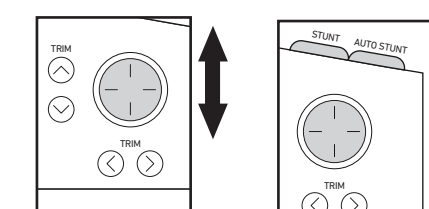
1. Follow this step if your drone begins to drift during take off or during flight.

A. Drone drifts backwards: Press the Forward Trim Button.

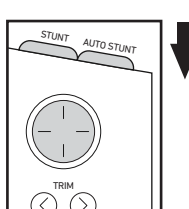
B. Drone drifts forward: Press the Backwards Trim Button.

C. Drone drifts right: Press the Right Trim Button.

D. Drone drifts left: Press the Left Trim Button.



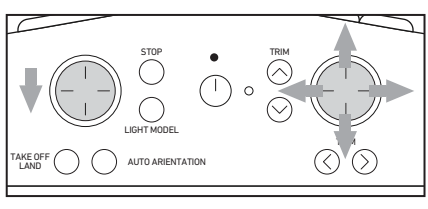
3. Use the Multi Directional Joystick to move forwards, backwards or side to side.



4. Stunts - Press the Stunt Button then press the Multi Directional Joystick in the direction you want to complete a stunt. Press the Auto Stunt Button to complete a radomn stunt.

Note: 1. The stunt function may be disabled if the drone battery power is low. 2. Repeat the drone at or above 10 feet before attempting a stunt.

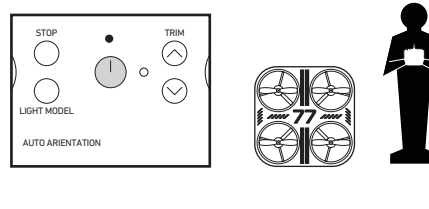
Step 6 - Landing Drone



1. Lower drone to 20 feet or less then press the Take Off Land button. Use the Multi Directional Joystick to maneuver drone. Or Push the left joystick down until the drone landing.

2. In the event the blades will not stop spinning, you can perform an emergency stop by pressing and holding the red STOP button.

Step 7 - Retrieving Drone



1. Turn off your remote. This will stop you from accidentally turning the propellers on.
2. Make sure the propellers have stopped spinning then pick up your drone. Press and hold the drone's on/off button to turn the drone off.

Note: You will need to pair your drone again before your next flight. (part 1 of step 4).

OTHER FEATURES

Auto Orientation

Press the Auto Orientation Button to turn the mode ON and then again to turn off.

- In this mode, the drone will always move in the direction you press the Multi Directional Button no matter which way the drone faces. When drone is in auto orientation mode, the drone will orient to the user (remote), no matter what direction the drone is facing.
- Press the Orientation button. Remote will beep every 6 seconds to indicate it is in Auto Orientation mode.
- Push the right stick up will send the drone away from the user, push left will move left, etc.
- Press Auto Orientation button to exit mode.

Adjust Speed

- Press the Speed button to toggle through three different speeds. Each speed is indicated by a tone.

Changing Drone Lights

- Press the Light Mode button to toggle between light on, slow pulse, fast pulse, and lights off.

Charge with Remote

- Use the controller to charge your drone when no other power source is available. Plug in the provided USB cable into the back of the controller to charge the drone.

Tips

- Do not crash drone into sand or dirt. Drone gears may become clogged.
- When first learning to fly, practice lifting off and hovering indoors.
- Stay several feet from walls and objects.