

## TX Antenna Specification (Hunting, Bullet Head, Dinosaur, and Sports Car these four common)

Antenna type: PCB antenna (copper foil) + 7 pin wire antenna

Antenna length:  $1.5+2.1+1.2*6+4.4+5.3*3+1.5*2+9.6=43.7\text{mm}$  (as indicated in the diagram)

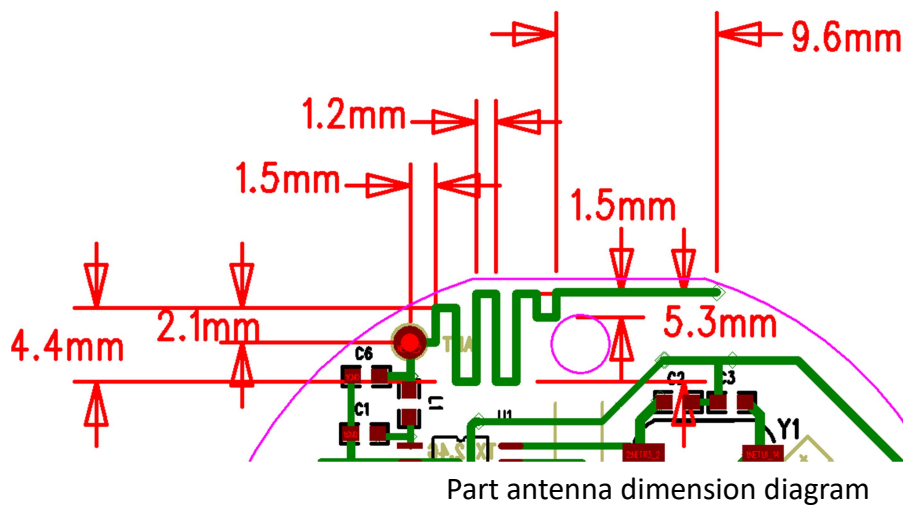
Antenna width: 0.5mm

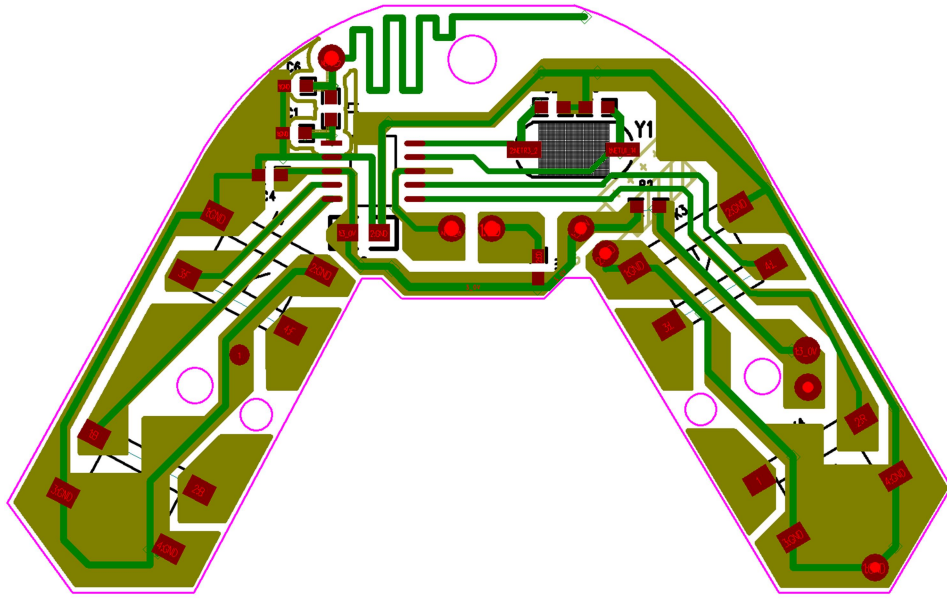
Copper foil thickness: 25mil

Wire antenna specification: 26AWG, 25mm length, 7pin, black

TX Antenna gain range : 0 dBi

RF Frequency range: 2402M~2480M Hz





TX PCB Full graph