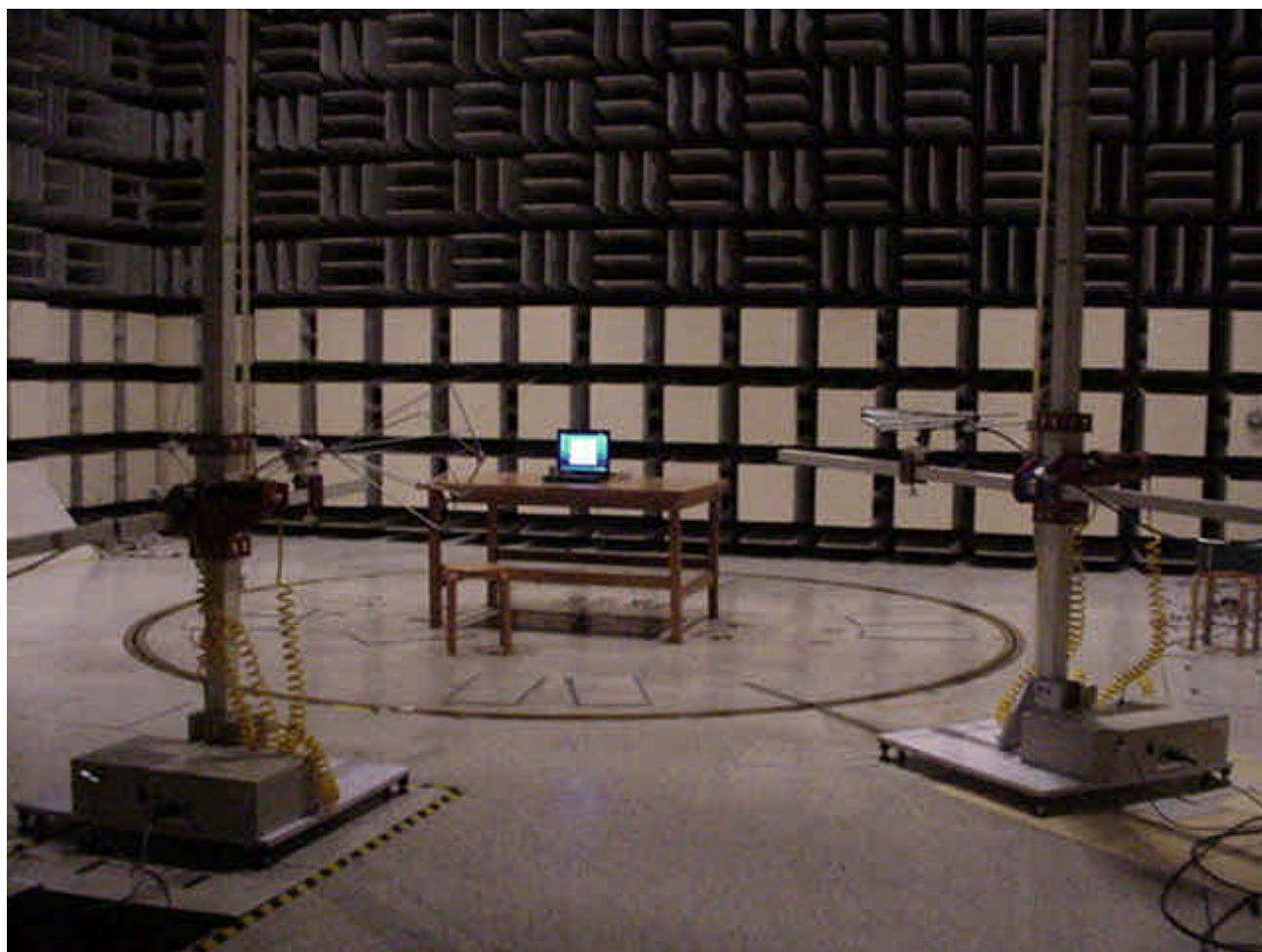


# Test Setup Photos

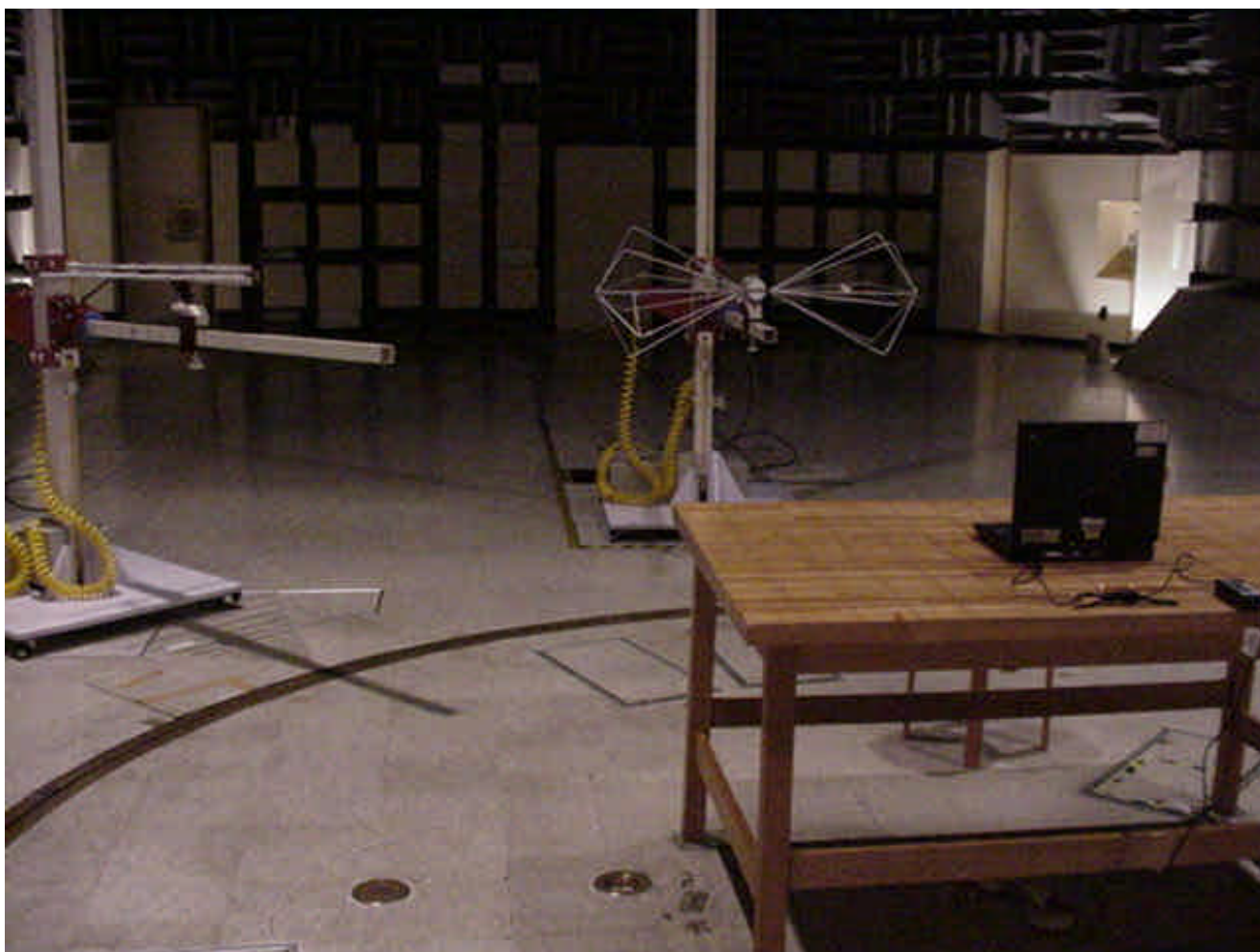
## EMI Semi-anechoic Chamber #2

### View from Antenna side



## **EMI Semi-anechoic Chamber #2**

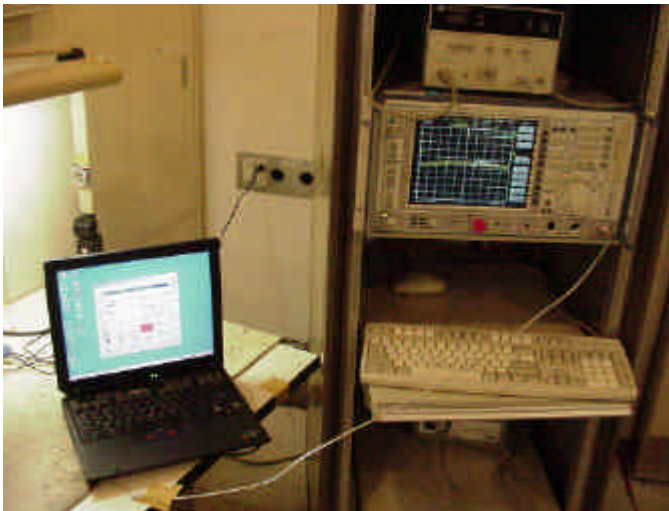
### **View from Turn Table side**



## Conducted Measurement Photos

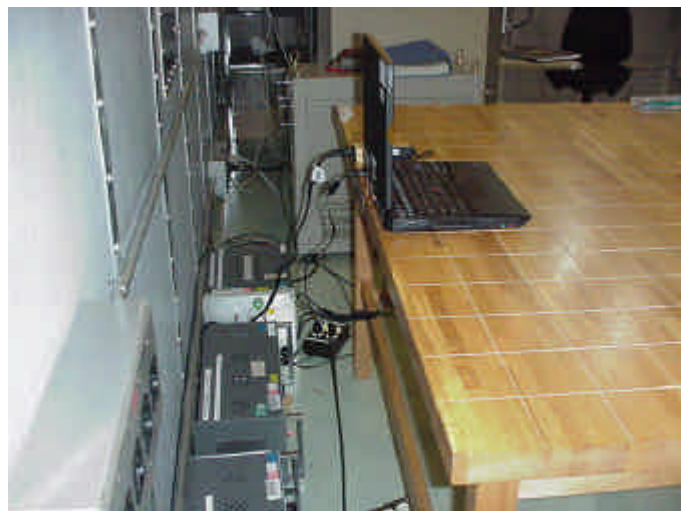
FCC	IC	Measurement Items	
<b>15.247(a)(2)</b>	<b>5.9.1</b>	Bandwidth at 6 dB blow	Tx
<b>15.247(b)(1)</b>	<b>6.2.2 (o)(b)</b>	Peak output power	
<b>15.247(c)</b>	<b>5.9.1</b> <b>6.2.2(o)(e1)</b>	Occupied BW (or Band-edge) Out of Band Emissions (Bandwidth at 20 dB blow)	
<b>15.247(d)</b>	<b>6.2.2(o)(b)</b>	Transmitter power density	

### EMI Semi-anechoic Chamber #2, Operation Room



FCC	IC	Measurement Items	
<b>15.207</b>	<b>6.6</b>	AC Wireline Conducted emissions	Tx
<b>15.207</b>	<b>7.4</b>	AC Wireline Conducted emissions	Rx

### Conducted EMI Room





**Radiated Measurement Photos**

FCC	IC	Measurement Items	
<b>15.205 / 209</b>	<b>6.2.1 / 6.3</b>	General Field Strength Limits (Restricted Bands and Radiated Emission Limits)	Tx
<b>15.209</b>	<b>7.3</b>	General Field Strength Limits (Radiated Emission Limits)	Rx

**EMI Semi-anechoic Chamber #2**



turn table

