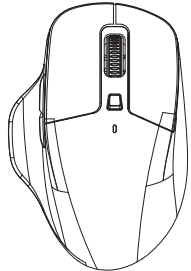


尺寸：70*100MM，材質：100克雙膠紙，正反兩面黑白印刷

User Guide



Product designation: Bluetooth Wireless Dual Mode Mouse
BRAND: SANWA
Model name:GMAWBT175
Manufacturer: Room 101,No.7, Yincheng 7nd Road,Xiabian Village, Chang'an Town,Dongguan City, GuangDong Prowince, China
For your personal enjoyment, we recommend that you read this manual thoroughlybefore using this product and keep this manual handy for reference if needed.

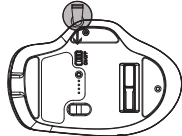
Main Specifications

- . Buttons: 6
- . Material: ABS
- . Size:110*73.7 *43.6mm;
- . Weight: 80±5g;
- . Key life: 5,000,000 times;
- . Scroll life: 3,000,000 times;
- . Key action: 65±15gf;
- . Transmission: 2.4G/BLUETOOTH
- . Operation distance: 6-10 meters
- . Resolution: 800/1200/1600DPI
- . With nano receiver and stored in the mouse body
- . Independent power on/off switch
- . Low power indicator
- . Service voltage: 1.5V;
- . Working current: <7.5mA;
- . Plug & play, no drivers needed

Setup and Use

I 2.4G MODE (green light)

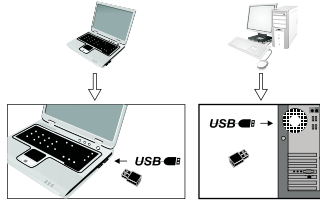
1. Put the power switch on the "ON" position



- 2.Get out of the nano Receiver from the slot on the bottom.



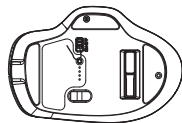
- 3.Plug the Nano receiver into the available USB port of computer



- 4.Wireless setup is ok. You can work freely

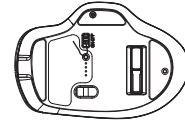
- .When you feels very slowly to move the mouse, it should be the batteries's power running low. You can take out the charging cable and charge it.

- 5.You can switch between 2.4G1 and 2 by pressing the mode switch button.

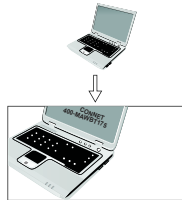


II BLUETOOTH MODE (blue light)

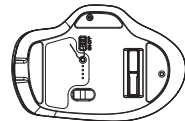
1. Press the mode switch button to switch the Bluetooth mode. When the blue light stops flashing, the pairing is successful.



- 2 The computer can connect to the mouse by turning on Bluetooth



- 3.You can switch between BT1 and 2 by pressing the mode switch button.



Package Contents:

- . 1PC wireless & Optical Mouse
- . 1PC Nano USB and TYPE-C Receiver
- . 1PC User Manual

System

Windows/XP /Vista/Win7/8/10 and Mac operating system

Tips and Notes

- . Don't use it on the reflecting and uneven surfaces which will effect the mouse
- . Don't put the nano receiver to stay with any bluetooth receivers together
- . Don't open and repair the mouse and receiver by yourself
- . Pls take the dry and soft cotton fabrics to clean the mouse
- . Remember to throw away the old batteries to the waste battery recycle bin

NOTE: This equipment has been tested and found to comply with the limits for a Class B digital device, pursuant to part 15 of the FCC Rules. These limits are designed to provide reasonable protection against harmful interference in a residential installation. This equipment generates uses and can radiate radio frequency energy and, if not installed and used in accordance with the instructions,may cause harmful interference to radio communications. However, there is no guarantee that interference will not occur in a particular installation. If this equipment does cause harmful interference to radio or television reception, which can be determined by turning the equipment off and on, the user is encouraged to try to correct the interference by one or more of the following measures:

- Reorient or relocate the receiving antenna.
- Increase the separation between the equipment and receiver.
- Connect the equipment into an outlet on a circuit different from that to which the receiver is connected.
- Consult the dealer or an experienced radio/TV technician for help

Changes or modifications not expressly approved by the party responsible for compliance could void the user's authority to operate the equipment.

This device complies with Part 15 of the FCC Rules. Operation is subject to the following two conditions:

- (1) this device may not cause harmful interference, and
- (2) this device must accept any interference received, including interference that may cause undesired operation.