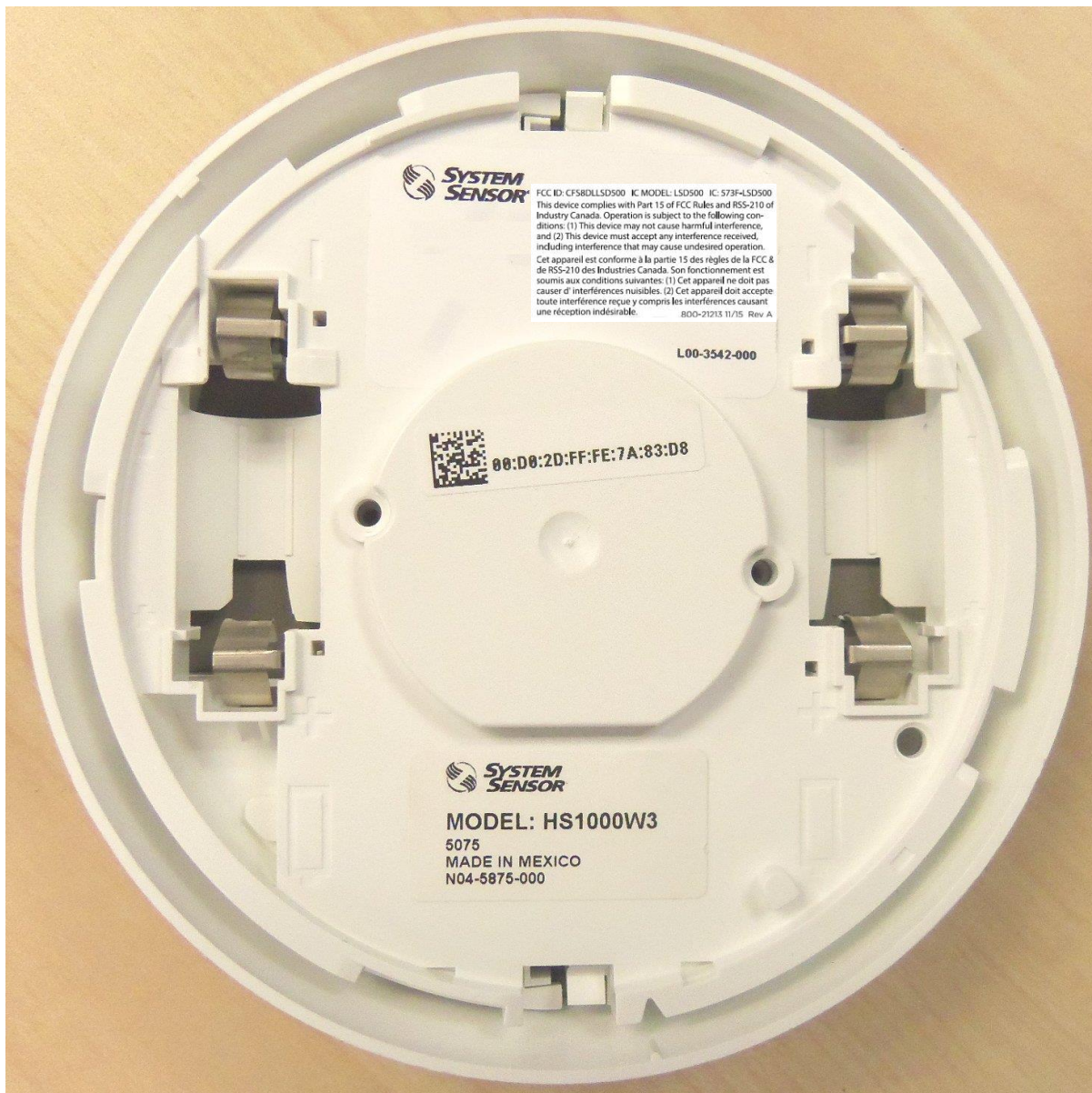
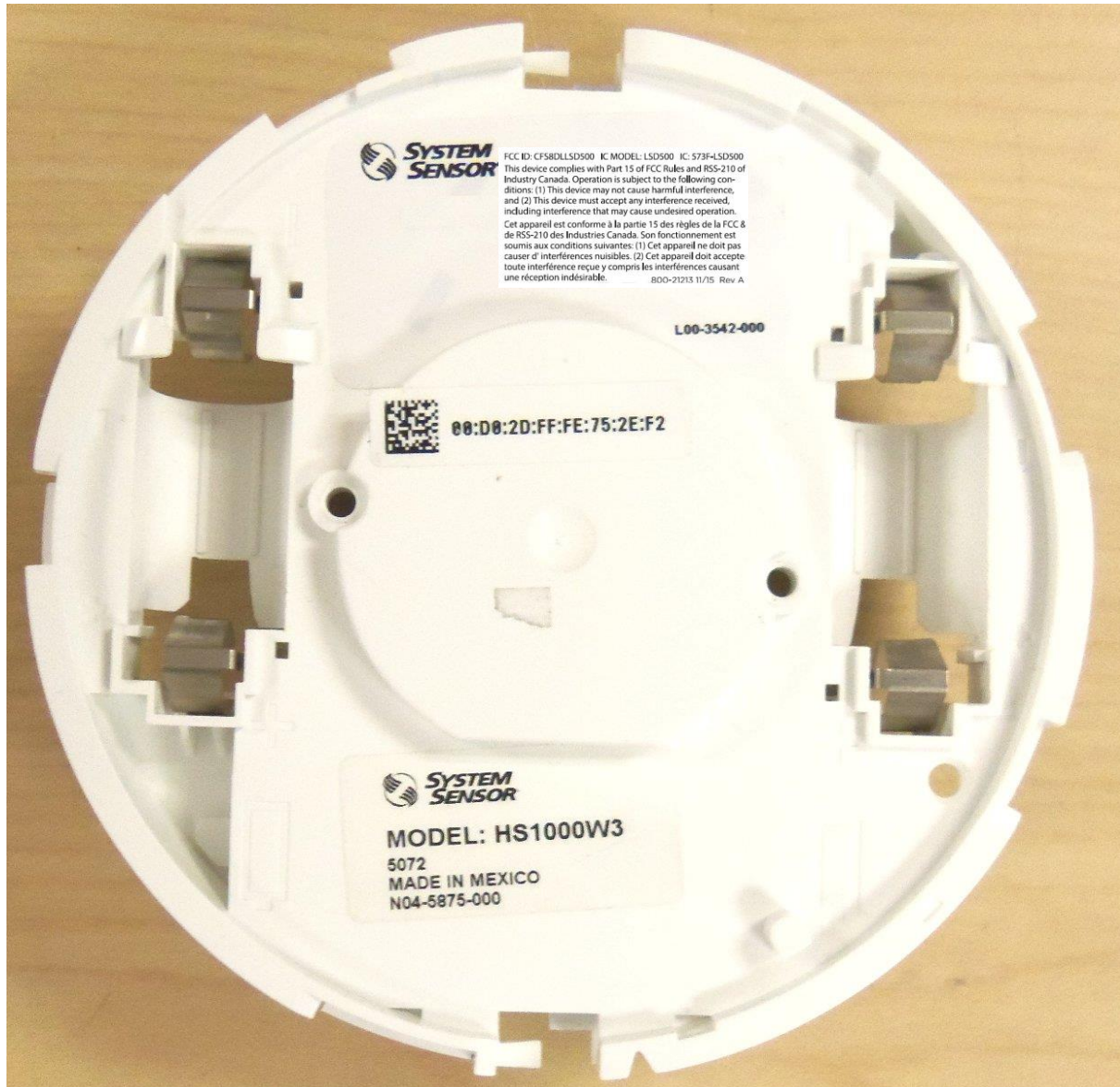
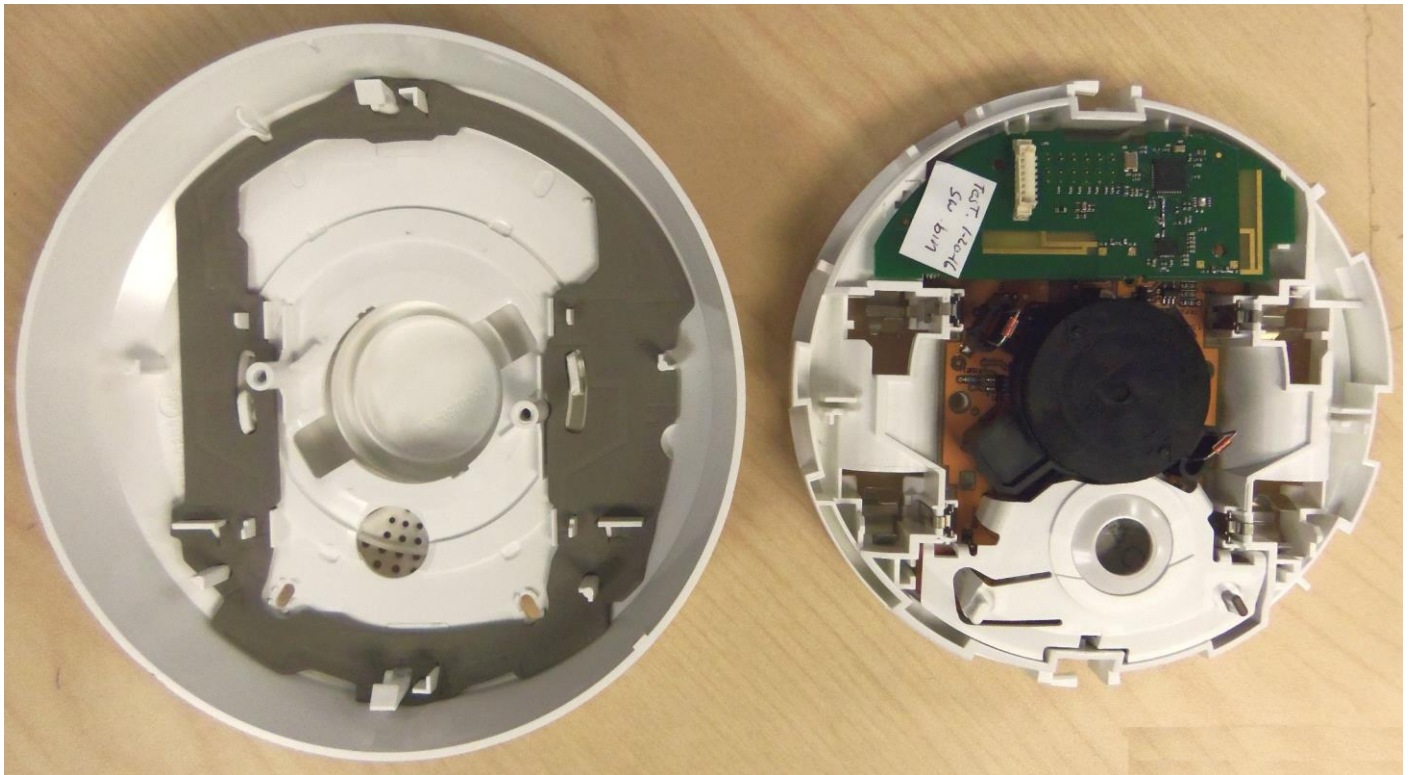


LSD500 INTERNAL PHOTOS**CASE BACK, MOUNTING PLATE REMOVED:**

LSD500 INTERNAL PHOTOS CONT.**INTERIOR ASSEMBLY BACK VIEW**

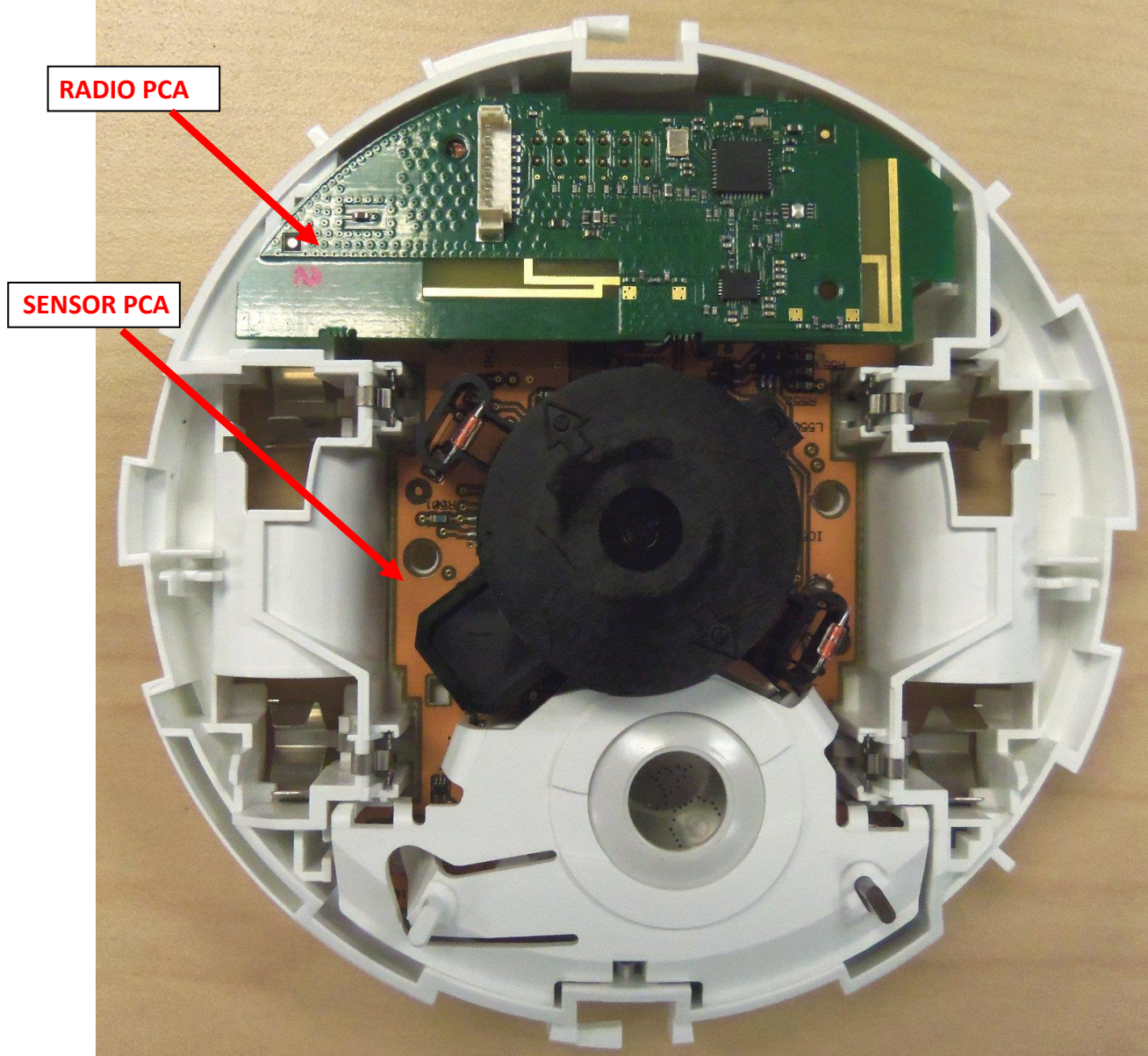
The circular edge of the plug-in case front, which could be seen in the previous photo, is not seen after the case front has been removed

**CASE FRONT INTERIOR (LEFT)
INTERIOR ASSEMBLY W/ CASE BACK COVER REMOVED (RIGHT)**



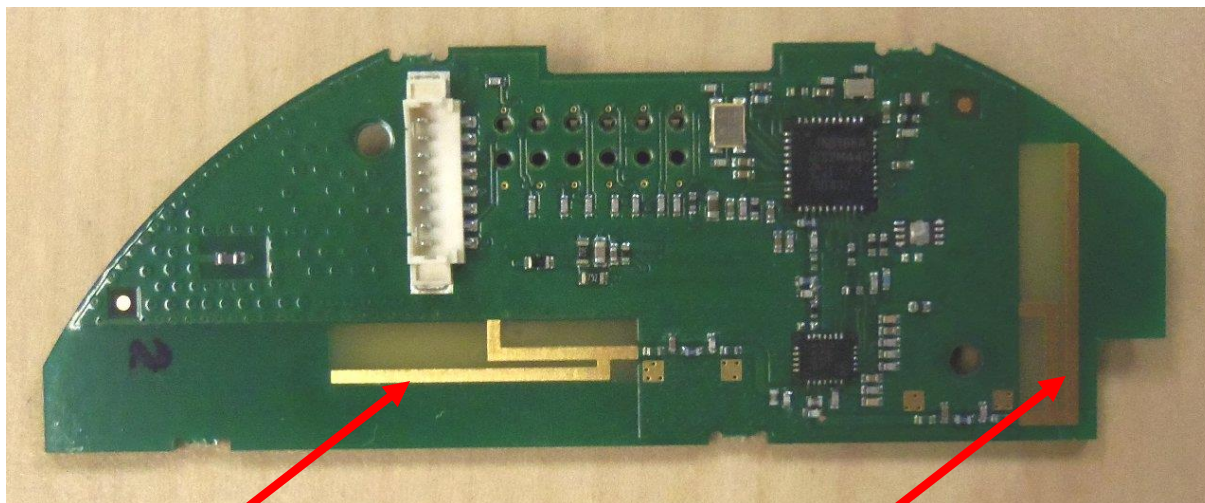
On the left is the case front which was removed from the interior assembly in the previous photo.
On the right is the interior assembly, front view.

INTERIOR ASSEMBLY REMOVED FROM CASE FRONT, FRONT VIEW

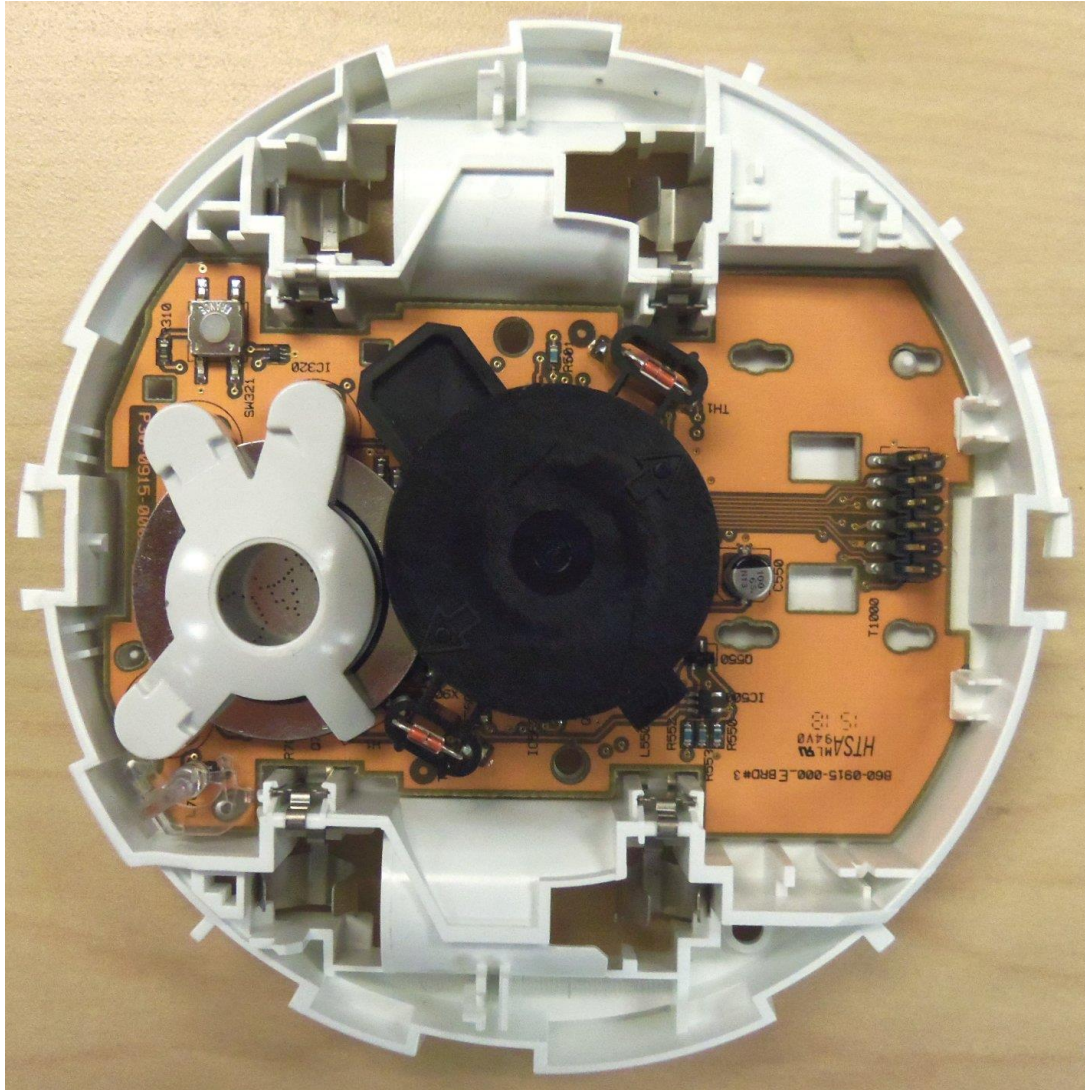


RADIO PCA

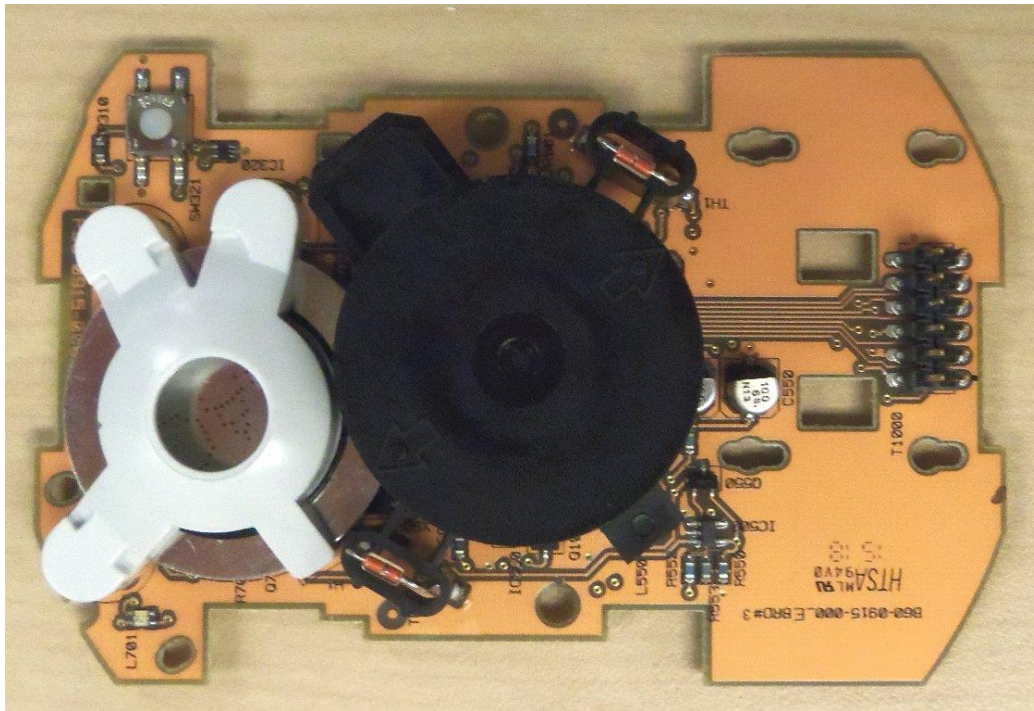
The radio PCA from the interior assembly (previous photo) contains the transceiver and PCB antennas.

**ANTENNA 2****PCA TOP****ANTENNA 1****PCA BOTTOM**

INTERIOR ASSY, SOUNDER COVER (LEFT) & RADIO PCA (RIGHT) REMOVED



SENSOR PCB REMOVED FROM INTERIOR ASSY PLASTIC, SENSOR SIDE



SENSOR PCB REMOVED FROM INTERIOR ASSY PLASTIC, BOTTOM SIDE

