

nut mini Smart Tracker

F6

Quick Guide

nut mini
防丟貼片 Smart Tracker

1 **Get** the app

Please search "Nut" from App Store or Google Play, or scan QR code to download it.



2 Turn on Bluetooth

Make sure your Bluetooth on the phone is on.

*Turn on notification in order to receive lost message.

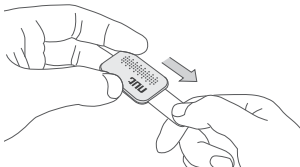
3 Sign up

Start Nut app and Sign up.

*Signing up by phone number is only supported in Mainland China. For people in other areas, please use Facebook or Twitter account.

4 **Pair** the Nut mini

1. Pull out the insulating paper, nut mini will flashing, that means boot.
2. Follow the prompts in the app, select nut mini to pairing.



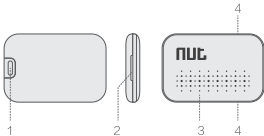
5 **Bound** your item with Nut mini

Tap the “Call Nut” button, if the Nut mini beeps and flashes, then pairing has completed. Try to take your item far from your phone and the distance between Nut mini and phone will show on app promptly. Notification and alerts will appear on the phone and Nut mini while they are beyond certain distance.



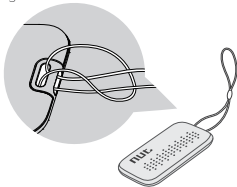
Know the Nut mini

1. Strap hole
2. Notch: for changing battery
3. Sound hole
4. Indicator lights



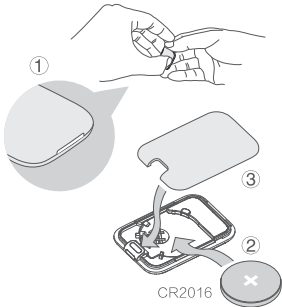
Install Strap

A strap shall be used, when you want to hang the Nut mini on the key, bag or other things.



Replace Battery

1. open Nut mini from the notch side.
2. Take out the old battery and put a new CR2016 Battery.
3. Close the Nut mini and it will restart again.



Welcome to
nutspace.com

FCC Information and Copyright

This equipment has been tested and found to comply with the limits for a Class B digital device, pursuant to part 15 of the FCC Rules.

These limits are designed to provide reasonable protection against harmful interference in a residential installation. This equipment generates,

uses and can radiate radio frequency energy and, if not installed and used in accordance with the instructions, may cause harmful interference

to radio communications. However, there is no guarantee that interference will not occur in a particular installation. If this equipment does

cause harmful interference to radio or television reception, which can be determined by turning the equipment off and on, the user is

encouraged to try to correct the interference by one or more of the following measures:

- Reorient or relocate the receiving antenna.
- Increase the separation between the equipment and receiver.
- Connect the equipment into an outlet on a circuit different from that to which the receiver is connected.
- Consult the dealer or an experienced radio/TV technician for help.

15.19 Labelling requirements.

This device complies with part 15 of the FCC Rules. Operation is subject to the following two conditions:

- (1) This device may not cause harmful interference, and
- (2) this device must accept any interference received, including interference that may cause undesired operation.

changes or modifications not expressly approved by the party responsible for compliance could void the user's authority to operate the equipment.

FCC RF warning statement: the device has been evaluated to meet general RF exposure requirement , The device can be used in portable exposure condition without restriction.



关注微信公共账号，了解更多使用技巧。
Follow WeChat for more information.
nut 服务电话/nut service telephone:
400-600-6873