

TACTOT^{.DK1}

WEARABLE HAPTIC VEST

UNBOXING

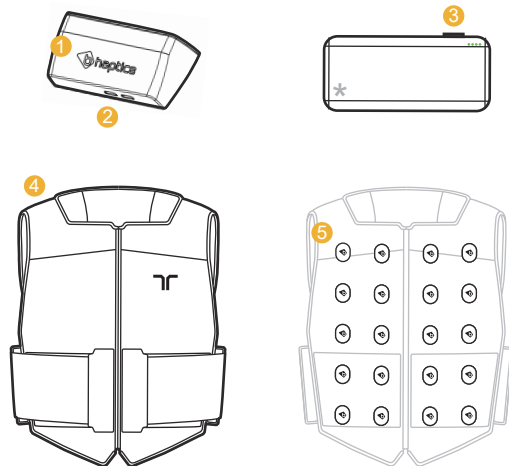
BOX CONTENTS

- 1x Tactot
- 2x Micro USB cable
- 1x Bluetooth dongle
- 1x Manual

ABOUT TACTOT

Tactot is a wireless vest for full torso haptic feedback. Using a total of 40 discontinuous placement of vibro-tactile motors, 20 in the front and 20 in the back, it creates a continuous form of tactile sensation around the body. It aims to enhance users' experience in an audio-visually immersive environment.

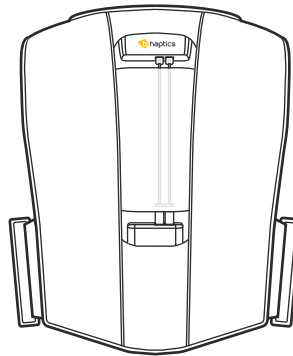
- | | |
|----------------------------|-----------------------------|
| 1. LED Status Indicator | 4. Tactot Vest |
| 2. Battery Connection port | 5. Vibro-tactile Motors |
| 3. On/Off Switch | * External Battery Optional |



SPECIFICATIONS

Model	Tactot DK1 BHTTT0000
Size	26 - 48 inch (body circumference)
Weight	1.6 kg (including battery)
Connection	Bluetooth low energy technology

CONNECTING BATTERY



Using the 2 micro USB cable found in the box, connect both to the battery and the device. Once connected, make sure the device is inserted back into its pocket like the image.

GETTING STARTED -BHAPTICS PLAYER

BHAPTICS PLAYER is an desktop software, for the optimization and control of your experience with Tactot. Acting as a link between the device, application and the Bhaptics Designer, it controls bluetooth connections, device settings and more.

DOWNLOADING SOFTWARE

Downloads for the Bhaptics Player software are available on our website, www.bhaptics.com.

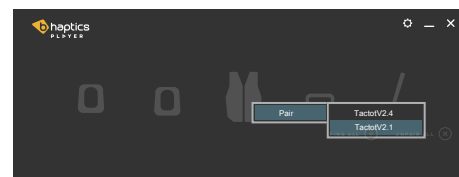
CONNECTING DEVICE

Turning Tactot on/off

After connecting the battery and device, press the power button on the battery to turn the device on. The device will turn off automatically when it is left unconnected for 2 mins.

Pairing and Unpairing

With the PC's bluetooth turned on (and if needed, with the dongle plugged in), find Tactot on the Player's interface. Right click and find your device name on the 'pair' tab. Once paired, the device will buzz to notify you it is ready. When the device is connected and not in use, the device will buzz every 100 secs to notify you. If a device had been paired once, it will connect automatically when turned on. To unpair, right click the paired device and find the 'unpair' button.



LED Indication



Waiting for connection

Connected to PC

TESTING HAPTIC FEEDBACK

The draw function can be found in the settings tab.



Path Mode

Draw lines within the dotted section to create continuous haptic feedback.



Dot Mode

Select specific vibro-tactile motors to activate.



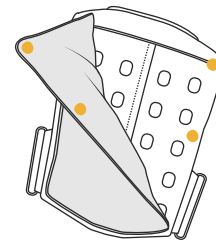
FIRMWARE UPDATE

When an update is available, notification will pop up on the settings button. The update will be found in the settings tab. Keep the firmware updated to its latest version. For more information visit our site.



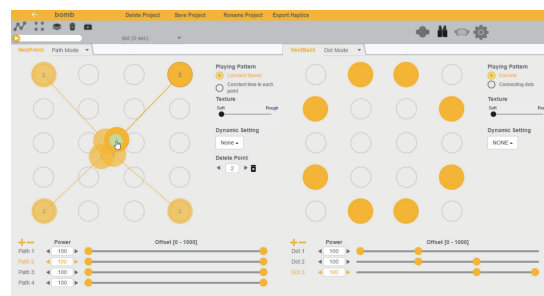
WASHING

To wash, remove and machine wash the detachable inner sleeve. When dry, reattach the inner sleeve, following the velcro guides.



GETTING STARTED - BHAPTICS DESIGNER

BHAPTICS DESIGNER is a web based application for creating and editing your own haptic feedback for Tactot. Visit our website, www.bhaptics.com, for further information.



BHAPTICS PLUGIN



We support plugins for Unity3D and Unreal Engine, which can be found in the Asset Store and Marketplace. When using, please keep to the plugin manual. And for the other SDKs, please contact us.

PRECAUTIONS

Before using the tactot, please read this manual carefully.

Safety and Warnings

- * Keep this product out of reach of small childrens.
- * Do not fasten the body straps excessively.
- * Never disassemble or modify the product.
- * Do not expose Tactot to extreme weather conditions.

Care and Handling

- * Do not throw, drop, or expose the device to physical impact.
- * Keep Tactot away from liquids, it is not water-resistant.
- * Do not store tactosy in extreme cold or hot areas.
- * Do not use chemicals or cleaning solvents on the device.

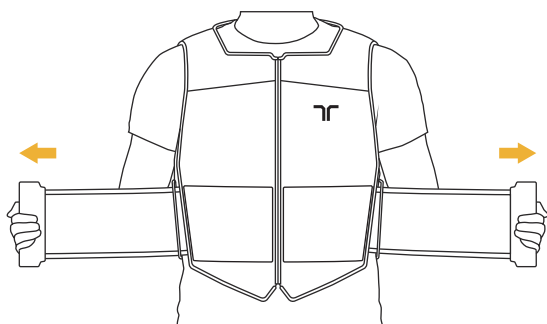
Contact our email for customer support.

“ support@bhaptics.com ”

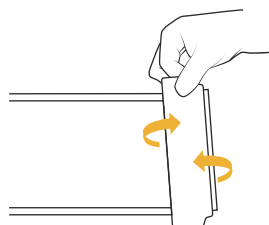
WEARING DEVICE

PUTTING ON TACTOT

Undo the velcro body straps and put on and zip up the tactot like you would wear a vest. Pull straps tightly to fit, then secure along the velcro guide towards the center of the body.



SIZE CONTROL



To account for larger fit, unravel the end of the velcro strap to fit your size. For smaller size, roll up the end of the velcro strap.

FCC Information to User

This equipment has been tested and found to comply with the limits for a Class B digital device, pursuant to Part 15 of the FCC Rules. These limits are designed to provide reasonable protection against harmful interference in a residential installation. This equipment generates, uses and can radiate radio frequency energy and, if not installed and used in accordance with the instructions, may cause harmful interference to radio communications. However, there is no guarantee that interference will not occur in a particular installation. If this equipment does cause harmful interference to radio or television reception, which can be determined by turning the equipment off and on, the user is encouraged to try to correct the interference by one of the following measures:

- Reorient or relocate the receiving antenna.
- Increase the separation between the equipment and receiver.
- Connect the equipment into an outlet on a circuit different from that to which the receiver is connected.
- Consult the dealer or an experienced radio/TV technician for help.

Caution

Modifications not expressly approved by the party responsible for compliance could void the user's authority to operate the equipment.

FCC Compliance Information : This device complies with Part 15 of the FCC Rules. Operation is subject to the following two conditions: (1) This device may not cause harmful interference, and (2) this device must accept any interference received, including interference that may cause undesired operation