

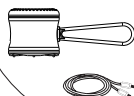
EW

User Manual

Packaging

Please make sure all below parts inside when the box opened

- Speaker
- USB Charge Cable
- User Manual



Quick Start Guide

ON/OFF: Hold the button 2s to turn On/ Off the speaker.

Charging: Use a Micro USB cable to charge the speaker.



Connection

Open the wireless setup on your Smart device, search and click "EWA Audio A119" to connect the speaker.

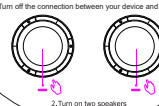


Support TWS

You can get two A119 speakers paired with each other for truly wireless stereo. (Another speaker need to be purchased separately)

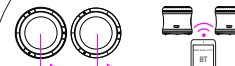


1. Turn off the connection between your device and the speaker.



2. Turn on two speakers

Support TWS



1. Please press the on/off button of each speaker quickly and continuously twice at the same time. When the "TWS" sound then you can see the blue light flash. After the two speakers are connected successfully.

2. Turn on two speakers

Tips:

- Two matched speakers will automatically connect to each other thereafter. It will automatically pair to previous wireless device as well.
- If auto connect failed, please restart devices, or clear wireless device connected records, and repeat steps as above

Indicator Status

	Red Light	Blue Light
Charging	ON	/
Fully Charged	/	/
Standby	/	ON
Playing	/	Blinking Slowly
Pairing	/	Blinking Quickly

Specifications

- Battery : 400mAh
- RMS :3W
- Frequency : 100Hz~18KHz
- SNR : S/N≥85dB
- Size : Ø 41.4×34 mm
- Protocols : HS/HF,A2DP,AVRCP,OPP
- Playing time : 4 Hours
- Charge Time : 2 Hours
- Waterproof Level : IPX7

Notice

- Turn on the speaker, it will automatically enter pairing mode by default, then automatically search and connect to paired devices.
- Do not touch chemicals such as benzene, thinner, etc.
- Please clean the speaker only use dry towels.
- Do not put the speaker close to open-flames such as lighted candles.
- It is a duty to protect the environment while you are considering drop the speaker, especially the battery inside.
- The speaker could only use in mild climate conditions
- Do not trample or squeeze the charging cable.
- User should not try to took the speaker apart, the speaker did not contain any component which could fixed by users.
- Please keep away from strong magnetic and electric fields.

Warranty Card

Dear Users,
Thanks for choosing EWA products.
For after sales service, please write down the contact details of you and the agent.

Model: _____
Date: _____
Your name: _____
Your phone No.: _____
Your address: _____
Sales agent: _____
Agent tel: _____
Agent address: _____
Agent e-mail: _____

For more information and instructions on how to get warranty service, send email to sales@ewach.com

EW

J.Y.M. Electronics Co.,Ltd
Shajing, Bao'an, Shenzhen 518000
info@ewach.com
www.ewach.com
+86-755-29918835

This device complies with part 15 of the FCC Rules. Operation is subject to the following two conditions: (1) This device may not cause harmful interference, and (2) this device must accept any interference received, including interference that may cause undesired operation.

Any Changes or modifications not expressly approved by the party responsible for compliance could void the user's authority to operate the equipment.

Note: This equipment has been tested and found to comply with the limits for a Class B digital device, pursuant to part 15 of the FCC Rules. These limits are designed to provide reasonable protection against harmful interference in a residential installation. This equipment generates uses and can radiate radio frequency energy and, if not installed and used in accordance with the instructions, may cause harmful interference to radio communications. However, there is no guarantee that interference will not occur in a particular installation. If this equipment does cause harmful interference to radio or television reception, which can be determined by turning the equipment off and on, the user is encouraged to try to correct the interference by one or more of the following measures:

- Reorient or relocate the receiving antenna.
- Increase the separation between the equipment and receiver.
- Connect the equipment into an outlet on a circuit different from that to which the receiver is connected.
- Consult the dealer or an experienced radio/TV technician for help.