

# Features

Below is a brief summary of the computer's many features:

## Performance

- Mobile Intel® Pentium® III Processor-M with 512 KB level 2 cache featuring the new Enhanced Intel® SpeedStep™ technology
- Memory expandable up to 256 MB
- High-capacity, Enhanced-IDE hard disk
- Li-Ion main battery pack
- Power management system with ACPI (Advanced Configuration Power Interface)
- Smart Card interface with pre-boot authentication system for added security

## Display

- 10.4"Thin-Film Transistor (TFT) liquid-crystal display (LCD) displaying 16M color at 1024x768 eXtended Graphics Array (XGA) resolution
- 8 MB Video DRAM
- 3D capabilities
- Simultaneous LCD and CRT display support
- "Automatic LCD dim" feature that automatically decides the best settings for your display and conserves power
- Dual display capability
- Tablet mode for LCD panel (Rotatable display)

## Multimedia

- 16-bit high-fidelity AC'97 PCI stereo audio with wavetable synthesizer
- Built-in speaker and microphone
- High-speed optical (CD-ROM) drive

## Connectivity

- High-speed fax/data modem port

- Fast infrared wireless communication
- USB (Universal Serial Bus) ports
- Ethernet/Fast Ethernet port
- IEEE 1394 port
- 802.11b wireless LAN (Available on select model)

#### Human-centric design and ergonomics

- Sleek, smooth and stylish design
- Acer Finetouch keyboard
- Ergonomically-centered touchpad pointing device
- Internet scroll key
- Support pen input via EMR stylus

#### Expansion

- Type II CardBus PC Card (formerly PCMCIA) slot
- Upgradeable memory

# Indicators

The computer has seven easy-to-read status icons below the display screen.



Icon	Function	Description
	Num Lock	Lights when Num Lock is activated.
	Caps Lock	Lights when Caps Lock is activated.
	Battery Charge	Lights when the battery is being charged.
	Media Activity	Lights when the floppy drive, hard disk or optical drive is active.
	Sleep	Lights when the computer enters Sleep mode.
	Power	Lights when the computer is on.
	Wireless Communication	Lights when the Wireless LAN capabilities are enabled.

The Power, Sleep and InviLink status icons are visible even when you close the display cover so you can see the status of the computer while the cover is closed.

# Using the keyboard

The keyboard has full-sized keys and an embedded keypad, separate cursor keys, two Windows keys and twelve function keys.

## Special keys

### Lock keys

The keyboard has three lock keys which you can toggle on and off.



Lock key	Description
Caps Lock	When Caps Lock is on, all alphabetic characters typed are in uppercase.
Num Lock (Fn-F11)	When Num Lock is on, the embedded keypad is in numeric mode. The keys function as a calculator (complete with the arithmetic operators +, -, *, and /). Use this mode when you need to do a lot of numeric data entry. A better solution would be to connect an external keypad.
Scroll Lock (Fn-F12)	When Scroll Lock is on, the screen moves one line up or down when you press the up or down arrow keys respectively. Scroll Lock does not work with some applications.



**Note:** To access the Num Lock and Scroll Lock functions, hold the Fn key down while pressing the F11 and F12 keys respectively.

## Embedded numeric keypad

The embedded numeric keypad functions like a desktop numeric keypad. It is indicated by small characters located on the upper right corner of the keycaps. To simplify the keyboard legend, cursor-control key symbols are not printed on the keys.



Desired access	Num lock on	Num lock off
Number keys on embedded keypad	Type numbers in a normal manner.	
Cursor-control keys on embedded keypad	Hold Shift while using cursor-control keys.	Hold Fn while using cursor-control keys.
Main keyboard keys	Hold Fn while typing letters on embedded keypad.	Type the letters in a normal manner.






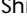




**Note:** If an external USB keyboard is connected to the computer, the internal keyboard is not disabled and can still be used.

## Windows keys

The keyboard has two keys that perform Windows-specific functions.

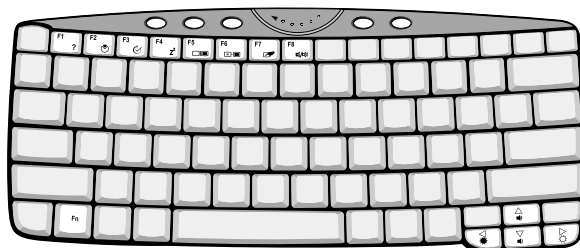






Key	Description
Windows logo key 	Start button. Combinations with this key perform shortcut functions. Below are a few examples:  + Tab (Activates next taskbar button)  + E (Explores My Computer)  + F (Finds Document)  + M (Minimizes All) Shift +  + M (Undoes Minimize All)  + R (Displays the Run... dialog box)
Application key 	Opens a context menu (same as a right-click).

## Hot keys







The computer employs hot keys or key combinations to access most of the computer’s controls like screen brightness, volume output and the BIOS Utility.

To activate hot keys, press and hold the **Fn** key before pressing the other key in the hot key combination.



Hot key	Icon	Function	Description
Fn-F1	?	Hot Key Help	Displays help on hot keys.
Fn-F2		Setup	Accesses the computer's configuration utility.
Fn-F3		Power Management Scheme Toggle	Switches the power management scheme used by the computer (function available if supported by operating system). See the online guide for more information.
Fn-F4	z <sup>z</sup>	Sleep	Puts the computer in Sleep mode. See the online guide for more information.
Fn-F5		Display Toggle	Switches display output between the display screen, external monitor (if connected) and both the display screen and external monitor.
Fn-F6		Screen Blank	Turns the display screen backlight off to save power. Press any key to return.



Hot key	Icon	Function	Description
Fn-F7		Touchpad Toggle	Turns the internal touchpad on and off.
Fn-F8		Speaker Toggle	Turns the speakers on and off.
Fn-↑		Volume up	Increases the speaker volume.
Fn-↓		Volume down	Decreases the speaker volume.
Fn-→		Brightness up	Increases the screen brightness.
Fn-←		Brightness down	Decreases the screen brightness.

## The Euro symbol

If your keyboard layout is set to United States-International or United Kingdom or if you have a keyboard with a European layout, you can type the Euro symbol on your keyboard.



**Note for US keyboard users:** The keyboard layout is set when you first set up Windows. For the Euro symbol to work, the keyboard layout has to be set to United States-International.

To verify the keyboard type:

- 1 Click on **Start**, **Control Panel**.
- 2 Double-click on **Regional and Language Options**.
- 3 Click on the **Language** tab and click on **Details**.
- 4 Verify that the keyboard layout used for "En English (United States)" is set to United States-International.
- 5 If not, select and click on **ADD**; then select **United States-International** and click on **OK**.

## 6 Click on **OK**.

To type the Euro symbol:

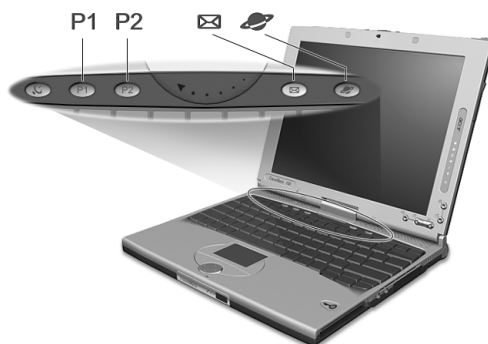
- 1 Locate the Euro symbol on your keyboard.
- 2 Open a text editor or word processor.
- 3 Hold **Alt Gr** and press the Euro symbol.



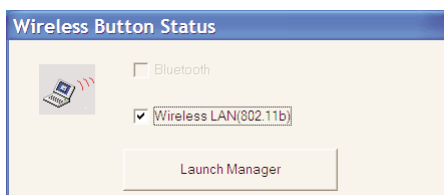
Some fonts and software do not support the Euro symbol. Please refer to <http://www.microsoft.com/typography/faq/faq12.htm> for more information.

## Launch Keys

Located at the top of the keyboard are four buttons. These buttons are called launch keys. They are designated as P1, P2, mail button and Web browser button.



**Note:** To the left of these four launch keys is the InviLink button. This feature is available on select model. To activate the InviLink feature press the InviLink button and a dialog box will be displayed showing the current status of the wireless feature.

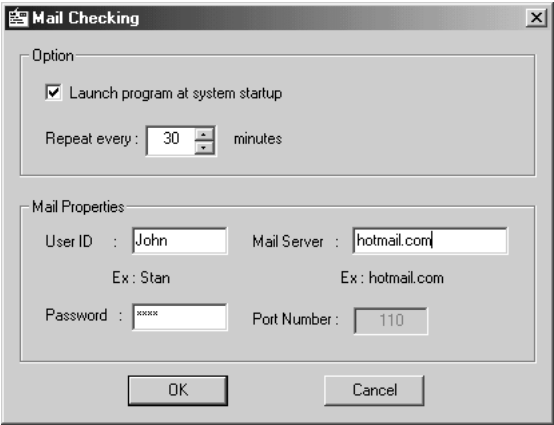


For more information on this feature, please refer to the InviLink manual.

Launch key	Default application
P1	User-programmable
P2	User-programmable
Mail	Email application. The mail button LED will flash when the user has incoming email
Web browser	Internet browser application

Email checking function

When you first start up your system, a Mail Checking dialog box will be displayed. In this dialog box, you have the option to launch the program at startup or not, set the time for mail checking, etc. If you already have an email account, you can fill in the Mail Properties in the dialog box.



The Mail Server is the server name where you get your email, for example: pop.mail.yahoo.com.tw.

Aside from the email checking function, there is a mail button that is used to launch the email application. It is located above the keyboard right below the LCD. The mail button LED will flash when the user has received an incoming email.

You can also access the Mail Checking dialog box by clicking on **Start, Programs, Launch Manager**, then click on **E-Mail checking setting**.

# Touchpad

The built-in touchpad is a PS/2-compatible pointing device that senses movement on its surface. This means the cursor responds as you move your finger on the surface of the touchpad. The central location on the palm rest provides optimum comfort and support.

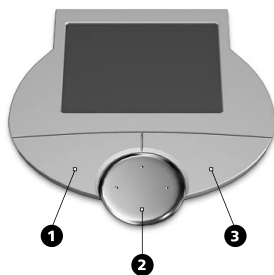


**Note:** When using an external USB or serial mouse, you can press **Fn-F7** to disable the touchpad. .



## Touchpad basics

The following items teach you how to use the touchpad:



- Move your finger across the touchpad to move the cursor.
- Press the left (1) and right (3) buttons located on the edge of the touchpad to do selection and execution functions. These two buttons are similar to the left and right buttons on a mouse. Tapping on the touchpad produces similar results.
- Use the 4-way scroll (2) key (top/bottom/left/right) to scroll a page up, down, left or right. This button mimics your cursor pressing on the vertical and horizontal scroll bars of Windows applications.

Function	Left button	Right button	4-way scroll key	Tap
Execute	Click twice quickly			Tap twice (at the same speed as double-clicking a mouse button)
Select	Click once			Tap once
Drag	Click and hold, then use finger to drag the cursor on the touchpad			Tap twice (at the same speed as double-clicking a mouse button) then hold finger to the touchpad on the second tap and drag the cursor
Access context menu		Click once		
Scroll			Click and hold the button in the desired direction (up/down/left/right)	



**Note:** Keep your fingers dry and clean when using the touchpad. Also keep the touchpad dry and clean. The touchpad is sensitive to finger movements. Hence, the lighter the touch, the better the response. Tapping harder will not increase the touchpad's responsiveness.

# Storage

This computer supplies you the following media storage:

- High-capacity Enhanced-IDE hard disk
- High-speed USB optical drive

## Hard disk

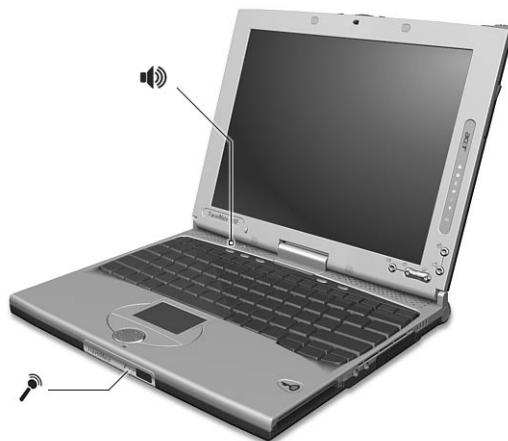
The high-capacity hard disk is the answer to your storage needs.

## Optical drive

The computer comes standard with a USB CD-ROM.

# Audio

The computer comes with 16-bit high-fidelity PCI stereo audio, and includes a built-in sensitive microphone and stereo speaker.



There are audio ports on the right panel of the computer. See “Right view” on page 7 for more information on connecting external audio devices.

## Adjusting the volume

Adjusting the volume on the computer is as easy as pressing some buttons. See “Hot keys” on page 22 for more informations on adjusting the speaker volume.



## Power management

This computer has a built-in power management unit that monitors system activity. System activity refers to any activity involving one or more of the following devices: keyboard, mouse, floppy drive, hard disk, and video memory. If no activity is detected for a period of time (called an inactivity timeout), the computer stops some or all of these devices in order to conserve energy.

This computer employs a power management scheme that supports ACPI (Advanced Configuration and Power Interface) which allows for maximum power conservation and maximum performance at the same time. Windows handles all power-saving chores for your computer.

Refer to your online guide and Windows help for more information.

# Moving around with your TravelMate

This section gives you tips and hints on things to consider when moving around or traveling with your computer.

## Disconnecting from the desktop

Follow these steps to disconnect your computer from external accessories:

- 1** Save your work in progress.
- 2** Remove any media, diskette or compact disc, from the drive(s).
- 3** Shut down the operating system.
- 4** Turn off the computer.
- 5** Close the display cover.
- 6** Disconnect the cord from the AC adapter.
- 7** Disconnect the keyboard, pointing device, printer, external monitor, and other external devices.
- 8** Disconnect the Kensington lock if you are using one to secure the computer.

## Moving around

“when you are just moving within short distances, for example, from your office desk to a meeting room”

### Preparing the computer

Before moving the computer, close and latch the display cover to place it in Sleep mode. You can now safely take the computer anywhere you go within the building. To bring the computer out of Sleep mode, open the display; then press, slide and release the power switch.

If you are taking the computer to a client's office or a different building, you may choose to shut down the computer:

- 1** Click on **Start, Shut Down....**
- 2** Select Shut down and click on **OK**.

- or -

you can put the computer in Sleep mode by pressing **Fn-F4**. Then close and latch the display.

When you are ready to use the computer again, unlatch and open the display; then press, slide and release the power switch.



**Note:** If the sleep indicator is off, the computer has entered Hibernation mode and turned off. If the power indicator is off but the sleep indicator is on, the computer has entered Sleep mode. In both cases, press, slide and release the power switch to turn the computer back on. Note that the computer may enter Hibernation mode after it is in Sleep mode for a period of time.

## What to bring to short meetings

A fully charged battery runs the computer for about 3 hours under most circumstances. If your meeting is shorter than that, you probably do not need to bring anything with you other than the computer.

## What to bring to long meetings

If your meeting will last longer than 3 hours or if your battery is not fully charged, you may want to bring the AC adapter with you to plug in your computer in the meeting room.

If the meeting room does not have an electrical outlet, reduce the drain on the battery by putting the computer in Sleep mode. Press **Fn-F4** or close the display cover whenever you are not actively using the computer. To resume, open the display (if closed); then press, slide, and release the power switch.

## Taking the computer home

“when you are moving from your office to your home or vice versa”

### Preparing the computer

After disconnecting the computer from your desktop, follow these steps to prepare the computer for the trip home:

- Make sure that you have removed any media, diskette and compact disc, in the drive(s). Failure to remove the media can damage the drive head.

- Pack the computer in a protective case that can prevent the computer from sliding around and cushion it if it should fall.



.....

**Caution:** Avoid packing items next to the top cover of the computer. Pressure against the top cover can damage the screen.

## What to bring with you

Unless you already have some items at home, bring the following items with you:

- AC adapter and power cord
- The printed user's manual

## Special considerations

Follow these guidelines to protect your computer while traveling to and from work:

- Minimize the effect of temperature changes by keeping the computer with you.
- If you need to stop for an extended period of time and cannot bring the computer with you, leave the computer in the trunk of the car to avoid exposing the computer to excessive heat.
- Changes in temperature and humidity can cause condensation. Allow the computer to return to room temperature, and inspect the screen for condensation before turning on the computer. If the temperature change is greater than 18°F (10°C), allow the computer to come to room temperature slowly. If possible, leave the computer for 30 minutes in an environment with a temperature between outside and room temperature.

## Setting up a home office

If you frequently work on your computer at home, it may be worthwhile to purchase a second AC adapter for use at home. With a second AC adapter, you can avoid transporting the extra weight to and from home.

If you use your computer at home for significant periods of time, you might also want to add an external keyboard, monitor, or mouse.

## Traveling with the computer

“when you are moving within a larger distance, for instance, from your office building to a client’s office building or traveling locally”

### Preparing the computer

Prepare the computer as if you were taking it home. Make sure that the battery in the computer is charged. Airport security may require you to turn on your computer when bringing it into the gate area.

### What to bring with you

Bring the following items with you:

- AC adapter
- Spare, fully-charged battery pack(s)
- Additional printer driver files if you plan to use another printer

### Special considerations

In addition to the guidelines for taking the computer home, follow these guidelines to protect your computer while traveling:

- Always take the computer as carry-on luggage.
- If possible, have the computer inspected by hand. Airport security X-ray machines are safe, but do not put the computer through a metal detector.
- Avoid exposing floppy disks to hand-held metal detectors.

## Traveling internationally with the computer

“when you are moving from country to country”

### Preparing the computer

Prepare the computer as you would normally prepare it for traveling.

### What to bring with you

Bring the following items with you:

- AC adapter
- Power cords that are appropriate to the country to which you are traveling
- Spare, fully-charged battery packs
- Additional printer driver files if you plan to use another printer
- Proof of purchase, in case you need to show it to customs officials
- International Traveler's Warranty passport

## Special considerations

Follow the same special considerations as when traveling with the computer. In addition, these tips are useful when traveling internationally:

- When traveling in another country, check that the local AC voltage and the AC adapter power cord specifications are compatible. If not, purchase a power cord that is compatible with the local AC voltage. Do not use converter kits sold for appliances to power the computer.
- If you are using the modem, check if the modem and connector is compatible with the telecommunications system of the country you are traveling in.

## Securing your computer

Your computer is a valuable investment that you need to take care of. Learn how to protect and take care of your computer.

Security features include hardware and software locks — a security notch, Smart Card and passwords.

### Using a computer security lock

A security keylock notch located on the rear panel of the computer lets you connect a Kensington-compatible key-based computer security lock.



Wrap a computer security lock cable around an immovable object such as a table or locked drawer handle. Insert the lock into the notch and turn the key to secure the lock. Some keyless models are also available.

### Using the Smart Card

This software includes the following components: PlatinumPAS™, PlatinumSecure™ and PlatinumKey™. Together, they provide you with multiple levels of security.

- PlatinumPAS implements the first security measure at the BIOS level and runs during the BIOS routine check when a computer is powered up or rebooting. If no Smart Card or Emergency Card is detected, the computer will stop booting up to prevent any illegal access to the system.
- PlatinumSecure enhances the secure logon procedure for Windows

XP at the Windows operating system level. It provides user authentication through its encryption/decryption function using the Smart Card. If your Smart Card is unavailable, you can use the Emergency Card as a temporary replacement card.

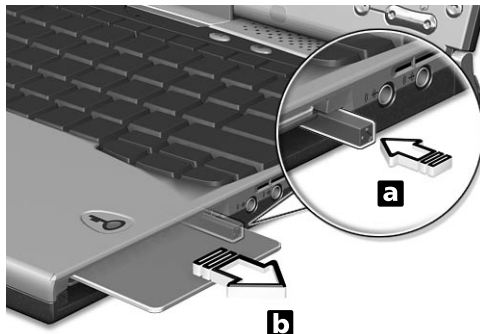
- PlatinumKey auto-authenticate and auto cache with one-click logons to all password-required websites (patent pending), eliminates the overhead costs associated with memorizing and typing user IDs and passwords when surfing the Internet with Microsoft or Netscape web browsers.

A card slot for your Smart Card is located on the right panel of the computer. This new security feature helps you boot up your computer with all your settings built right into your Smart Card. You don't have to remember your password to access your computer.





To remove the Smart Card press the Smart Card eject button (a) and remove the Smart Card (b) as shown in the illustration below.



For more details consult your Smart Card documentation.

## Registering your Smart Card



**Important!** Your Acer notebook is equipped with a Smart Card security feature that protects the computer from unauthorized access. If you enable this feature, please make sure that your warranty card is completed and sent back to Acer. This information will be used by Acer service centers to confirm ownership in case your Smart Card "key" is lost or damaged. Registering your notebook with Acer's service center is extremely important when replacing your lost Smart Card "key".

If you have already bypassed the Smart Card registration, please reinstall the application as follows:

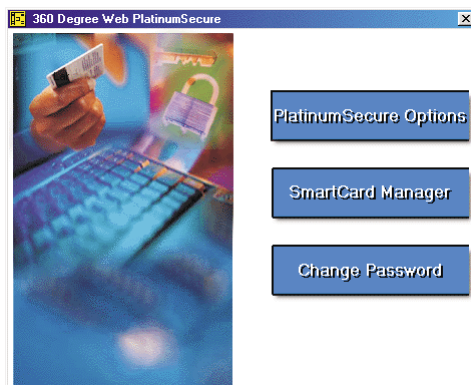
- 1 Insert your **System CD** and reinstall from it.
- 2 Follow the onscreen instructions.

To enable the Smart Card security feature, please refer to your Smart Card user manual.

## Running PlatinumSecure

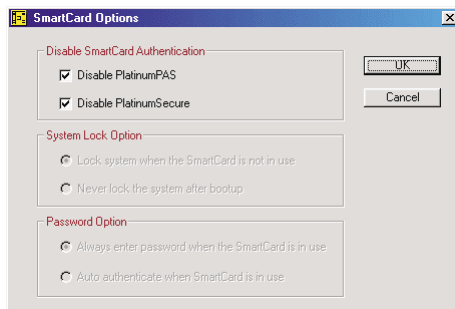
After installation, the PlatinumSecure icon appears on the Windows desktop. Double-click on it or click the right mouse button, then select

**Open** from the pop-up menu (or launch it from the PlatinumSecret program group). From the menu that appears, you can directly access three operations: PlatinumSecure Options, Smart Card Manager, and Change Password.



### PlatinumSecure Options

Click on the **PlatinumSecure Options** button to open the Smart Card Options window. It provides great flexibility to meet the various privacy protection needs of many different users.



- **Disable Smart Card Authentication**

When **Disable PlatinumPAS** is selected, the PlatinumPAS Preboot Authentication System will be disabled.

When **Disable PlatinumSecure** is selected, the PlatinumSecure Windows Logon Authentication with the Smart Card will be

disabled, which means that the protection of your PC as well as other options under **System Lock Option** and **Password Option** will be disabled, too. The Smart Card password is required for this selection.

- System Lock Option

When **Lock system when the Smart Card is not in use** (default) is selected, if the Smart Card is removed, the PlatinumSecure screensaver comes up and access to the system is locked. When **Never lock the system after bootup** is selected, there is no protection for the PC after boot up, and Password Option is disabled.

- Password Option

When **Always enter password when the Smart Card is in use** (default) is selected, the password is required whenever you need to regain access to the system while the Smart Card is inserted.

When **Auto authenticate when Smart Card is in use** is selected, no password is required. All you need to do is insert the Smart Card.

## Smart Card Manager

The Multiple user support is implemented and managed in Smart Card Manager. Please note that five users can be registered on one PC. If you registered as the Primary User, **ONLY** you can add/remove other users. If you registered as a regular user, other registered users could add/remove you. All registered users will be able to use the View Smart Card users option.

## Change Password

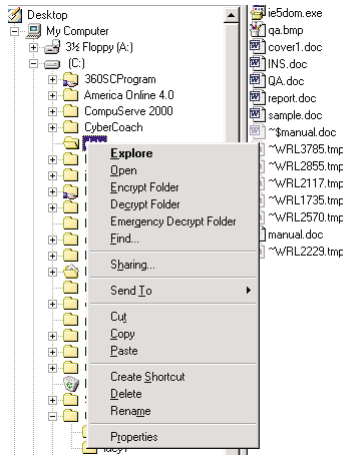
Click the **Change Password** button, fill in the three fields in the Change Password dialog box, and then close the dialog box by clicking the **OK** button to change the Smart Card password.

## Encrypt/Decrypt

PlatinumSecure can also be used to encrypt/decrypt files except for system files or files that are already encrypted with other applications. Double-click on a file to automatically encrypt/decrypt it. However, if the file is associated with an application, it will be opened with that application instead of being encrypted. Note that the encryption is not recursive. That is, when you encrypt a folder, only the files immediately under that folder are encrypted, other files under subfolders are not.

To find the Encrypt/Decrypt commands:

- Right-click on the Start menu,
- Right-click on a folder or icon on your Windows desktop, or
- In Windows Explorer, right-click on a selected folder, file, or group of files.



## Running PlatinumKey

PlatinumKey provides one-click logon to all password-required websites. With its unique Smart Card caching technology, you can greatly extend the limited card memory size to unlimited use by storing your private data in an encrypted file either on the Smart Card, or on the 360 Degree Web secure website server.

Information in PlatinumKey, like the ones in My Info and Credit Cards, can be transferred to other applications using the "drag-and-drop" method: simply point the cursor to the field containing the information, press and hold the left mouse button, then drag the cursor to the application and drop the information there.

PlatinumKey also makes it convenient to change your password. There is always a PWD button available, which is equivalent to the Change Password button in PlatinumSecure.

Follow these steps to use PlatinumKey:

- 1 Open your browser to connect to the Internet.

- 2 Double-click on the PlatinumKey icon on your Windows desktop.
- 3 Enter your Smart Card password and click **OK**.
- 4 If PlatinumKey is being used for the very first time, it will ask "Would you like to link to 360 Degree Web secure website server to backup the information on your Smart Card?" The default answer is Yes, and it will enable you to store your information (excluding the Credit Cards) on the 360 Degree Web secure website server for backup purposes in case the card is lost/stolen. If you choose No, you will only be able to save My Info, Credit Cards and 5 Websites on your Smart Card.
- 5 Log in to a website where you are already registered.
- 6 PlatinumKey automatically stores your login data and asks for your confirmation to automatically log you in the next time you access the site. Click **Yes** and continue browsing.
- 7 To close PlatinumKey when you are finished browsing, right-click on the PlatinumKey icon on your Windows taskbar and select Close PlatinumKey.

PlatinumKey provides a list of all the logon pages that you have stored. To go directly to any site on the list either double-click it or select it and click the Go button. Also, you can click the View button to view the selected website information including Web Name, User Name, Password, and Web URL. Similarly, type the first letter(s) of a site on the list, and the site will be searched and selected.

You can Edit and Delete the sites as well as other information, and Save or Cancel the changes you made, by selecting the button corresponding to each command.

## Using passwords

Three password types protect your computer from unauthorized access. Setting these passwords creates several different levels of protection for your computer and data:

- Setup Password prevents unauthorized entry into the BIOS Utility. Once set, you must key-in this password to gain access to the BIOS Utility. See "BIOS Utility" on page 57 and your online guide for more details.
- Power-On Password secures your computer against unauthorized use. Combine the use of this password with password checkpoints on boot-up and resume from hibernation for maximum security.

- Hard Disk Password protects your data by preventing unauthorized access to your hard disk. Even if the hard disk is removed from the computer and moved to another computer, it cannot be accessed without the Hard Disk Password.

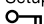


**Important!** Do not forget your Setup and Hard Disk Password! If you forget your password, please get in touch with your dealer or an authorized service center.

## Entering passwords

When a password is set, a password prompt appears in the left-hand corner of the display screen.

- When the Setup Password is set, the following prompt appears when you press **F2** to enter the BIOS Utility at boot-up.

Setup Password  


Type the Setup Password and press **Enter** to access the BIOS Utility.

- When the Power-on Password is set, the following prompt appears at boot-up.



Type the Power-on Password (a . symbol appears for each character you type) and press **Enter** to use the computer. If you enter the password incorrectly, an **x** symbol appears. Try again and press **Enter**.

- When the Hard Disk Password is set, the following prompt appears at boot-up.



Type the Hard Disk Password (a . symbol appears for each character you type) and press **Enter** to use the computer. If you enter the password incorrectly, an **x** symbol appears. Try again and press **Enter**.



**Important!** You have three chances to enter a password. If you successfully entered the password, you are presented with a correct entry symbol.

If you fail to enter the password correctly after three tries, the following message or symbol appears.

**Setup**

Incorrect password specified. System disabled.

**Power-on/Hard Disk**



Slide and hold the power switch for four seconds to shut down the computer. Then turn on the computer again, and try again. If you fail to enter the Hard Disk Password, please contact your dealer or an authorized service center.

## Setting passwords

You can set passwords using:

- Notebook Manager
- BIOS Utility

See your online guide for more details.

## 2 Customizing your computer



After learning the basics of your TravelMate computer, let's get acquainted with the advanced features of your computer. In this chapter, you will learn how to add options, upgrade components for better performance, and customize your computer.