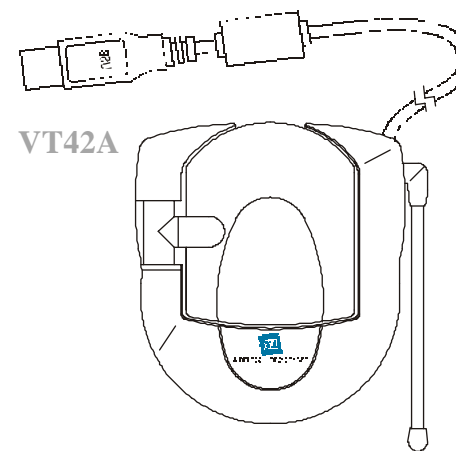




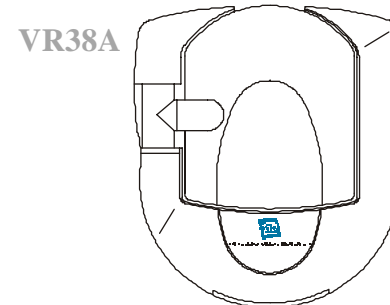
REMOTE MUSIC PLAYER



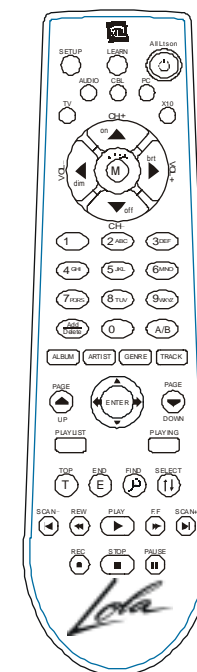
OWNER'S MANUAL



VT42A

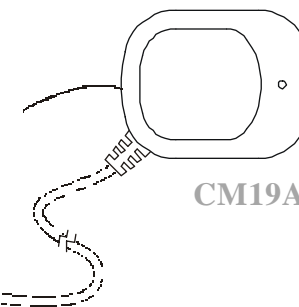


VR38A



UR89A

Basic Model, MK10A
(UR89A + CM19A)
Deluxe Model, MK11A
(UR89A + VT42A + VR38A)



CM19A

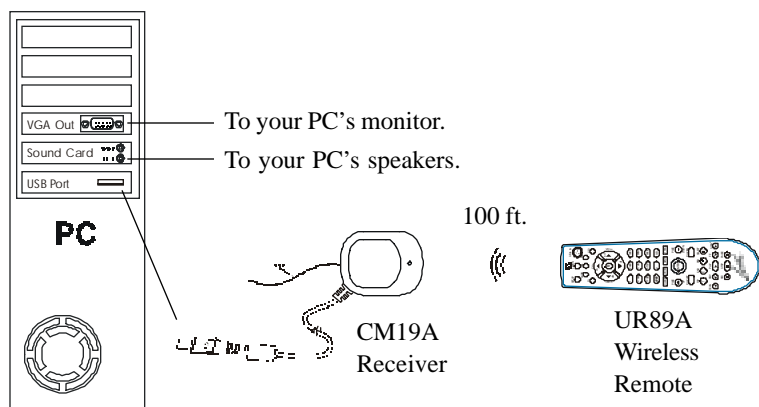
CONTENTS

Introduction	3
Basic System	4
Deluxe System	5
Installing the Software	6
Basic System	6
Deluxe System	7
Operation	8
Media Manager	8
Using Lola	10
Using the Remote	12
Installing the batteries	12
Button Descriptions	13
Connecting up the Audio/Video Sender (Deluxe System only)	14
Connecting up the Audio/Video Receiver (Deluxe System only)	15
Advanced Options	17
Using the Remote to Control Your TV/Audio system	17
Code Search	17
Code Identification	18
Learning Codes	18
Code List	19
Home Control	22
Controlling X10 Modules	23
Changing the Remote's Housecode	24
Changing the Remote's Master Code.	24
Fine Tuning Your System	25
Troubleshooting	26

INTRODUCTION

Your Lola™ Wireless Audio/Video Sender kit consists of a Sender which connects to the video and audio output jacks on your PC, and a Receiver which you connect to your TV and/or audio system. It includes the Lola software program that you install from X10's Web Site. You control the Audio/Video Sender and software using a remote control (included). The Sender converts the audio and video signals from your PC into wireless Radio Frequency (RF) signals and transmits them (even through walls) to the Receiver. The Receiver converts the signals back to their original form and passes them to your TV and/or audio system. The Lola software application lets you listen to audio files stored on your computer's hard drive, in a variety of formats (MP3, wma, rm, wav, etc.), on any TV or audio system in your home, and you can control everything using the remote control while sitting in front of your TV.

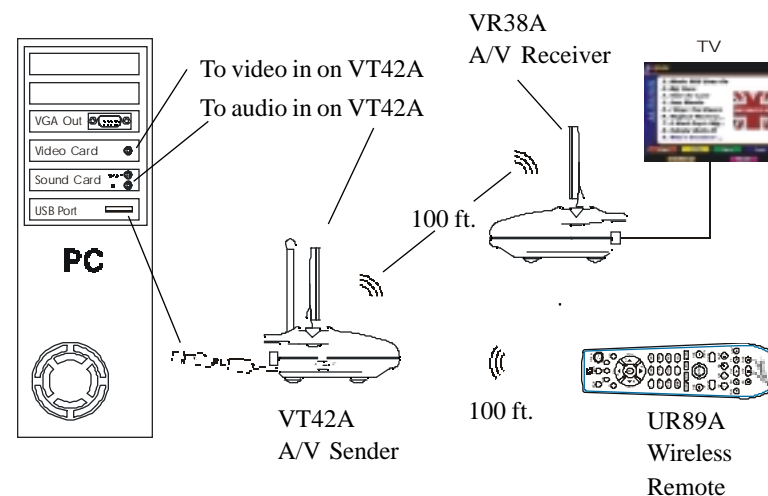
The Basic System includes the UR89A remote control, a CM19A USB PC Receiver, the Lola software, and all connecting cables.



The remote controls the Lola application in your PC via the CM19A receiver. The CM19A connects to your PC's USB port.

This lets you view the Lola application on your PC, and listen to audio files through your PC's speakers. You can also directly connect the video and sound outputs from your PC to a TV using the RCA, S-Video, and Audio, jacks and cables. All connecting cables are included.

The Deluxe System includes the UR89A remote control, a VT42A Wireless Audio/Video Sender with built in USB PC Receiver, a Wireless Audio/Video Receiver, and the Lola software, and all connecting cables.



The remote controls the Lola application in your PC via the receiver built into the VT42A. The VT42A connects to your PC's USB port.

The VT42A sends the sound and picture from your PC to the VR38A that you connect to a TV anywhere in your home. This lets you view the Lola application on your TV, hear the music files stored in your PC on your TV's speakers, and control the Lola application while sitting in front of your TV with the remote.

Or you can connect the VR38A receiver to your audio system, view Lola on your PC's monitor and listen to the music files stored in your PC on the speakers connected to your audio system.

INSTALLING THE SOFTWARE

Basic vs Deluxe Systems

The Basic System includes the UR89A remote control, a CM19A USB PC Receiver, the Lola software, and all connecting cables.

The Deluxe System includes the UR89A remote control, a VT42A Wireless Audio/Video Sender with built in USB PC Receiver, a Wireless Audio/Video Receiver, the Lola software, and all connecting cables.

Go to page 12 if you purchased the Deluxe System.

SOFTWARE INSTALLATION FOR BASIC SYSTEM (CM19A)

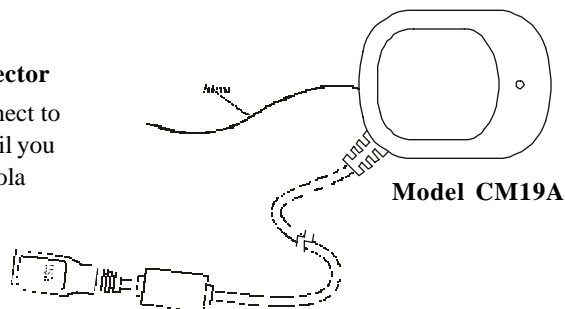
Before you install the software, unpack the hardware components and have the USB Receiver (Model CM19A) near your PC ready to connect it up when the Lola software installation program instructs you to do so.

IMPORTANT: Do NOT connect the USB connector before you install the software.

Log on to the Internet and go to the web address in the e-mail you received when your order was confirmed (or visit www.x10.com/software). There you will be able to install the software (you need to be connected to the Internet while you install the software). Follow the instructions to install it. At the appropriate point in the installation you will be instructed to plug the Receiver's USB connector into your PC's USB port. When you do this, Windows® will tell you it has found new hardware and will automatically install the X10 USB driver for the CM19A. Follow the instructions to complete the software installation.

USB connector

Do not connect to your PC until you install the Lola software.



SOFTWARE INSTALLATION FOR DELUXE SYSTEM (VT42A)

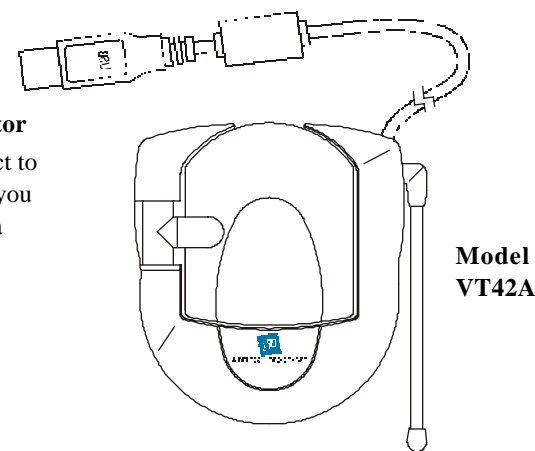
Before you install the software, unpack the hardware components and have the Sender (Model VT42A) near your PC ready to connect it up when the Lola software installation program instructs you to do so.

IMPORTANT: Do NOT connect the USB connector before you install the software.

Log on to the Internet and go to the web address in the e-mail you received when your order was confirmed (or visit www.x10.com/software). There you will be able to install the software (you need to be connected to the Internet while you install the software). Follow the instructions to install it. At the appropriate point in the installation you will be instructed to plug the Sender's USB connector into your PC's USB port. When you do this, Windows® will tell you it has found new hardware and will automatically install the X10 USB driver for the Sender. Follow the instructions to complete the software installation.

USB connector

Do not connect to your PC until you install the Lola software.



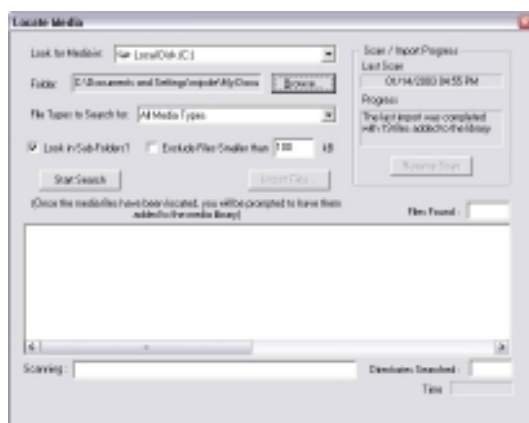
After the software installation is complete, connect the VT42A's power supply to the jack on the back of the unit and plug the power supply into an AC outlet. Make sure the switch on the side of the unit is ON.

Windows® is a registered trademark of Microsoft Corporation.

OPERATION

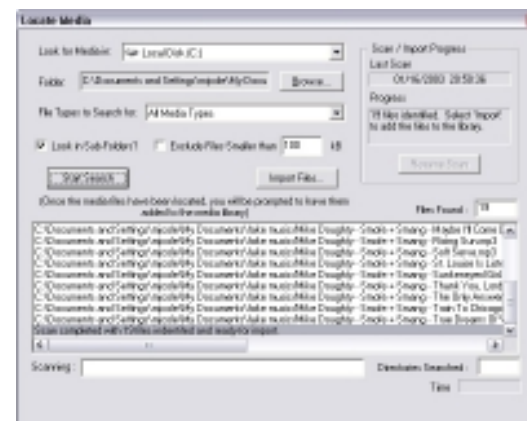
MEDIA MANAGER

Before using Lola you will need to use Media Manager to scan your computer for music files and import them into Lola. Lola then uses that information to display your music in an easy to use format that can be accessed by remote control from anywhere in your home. Select Run Media Manager from the Lola folder under your Windows Start button. Select Scan Computer for Media from the Tools menu. A screen like the one below appears.

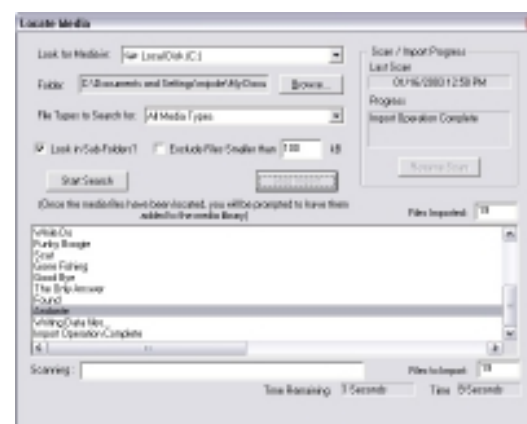


Click on the Browse button to find the location that you store your music files (if desired), then click on Start Search. Or scan your entire computer by clicking on Start Search.

Media Manager searches your computer for music files and lists them as they are found.



After Media Manager files all your music files, click on Import Files.



After you've imported all your music files into Lola, exit the Media Manager and run Lola.

Note you can also right-click on the screen while Lola is running and select Run Media Manager.

USING LOLA

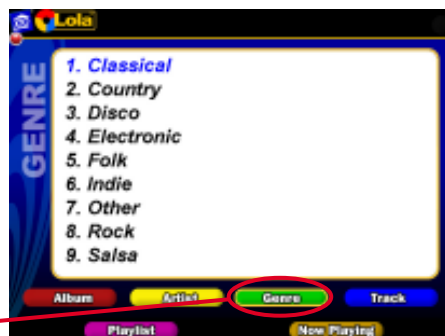
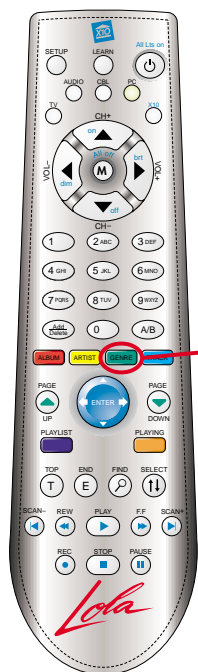
After you've installed the Lola software, connected up the hardware, and turned on your PC, the Lola shortcut icon shown below appears on your desktop.



Double-click on the Lola shortcut icon on your desktop to launch Lola. If you don't see the icon, run Lola from the Windows Start button.

If during installation you chose to have the Lola Controller run at startup, you can simply press the Power button on the remote to launch Lola.

Press the Genre button on the remote. A screen similar to the one below appears on your PC's screen.



The software displayed on your PC lets you select music by Album, by Artist, by Genre (Rock, Jazz, Country, etc.) or you can list all your tracks in sequence. You can also create and display your own Play Lists. The buttons on the remote match the categories shown on your PC screen.

You can use Media Manager included with Lola to search the Internet for the album covers for the albums you import into Lola and displays them on screen.



Select your favorite tracks from any album, play them in order, or out of sequence. Create your own albums and Play Lists.



When used with X10's 2.4 GHz Audio/Video Sender, you can display the above on any TV in your home. This lets you sit in front of your TV and select and play all the music stored in your PC using the remote control. You can hear your music through your TV's speakers, through a surround-sound system connected to your TV, or you can send the music to your stereo system - with no wires!

See Lola's Help for more information.

USING THE REMOTE

The Lola Remote works with the CM19A Receiver (Basic system) or VT42A Receiver/Transmitter (Deluxe system). The remote sends commands to the Receiver which is connected to your PC. This lets you access all the features of the Lola application from the comfort of your easy chair.

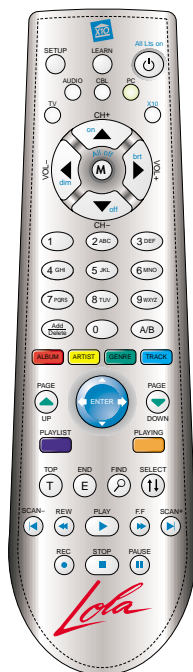
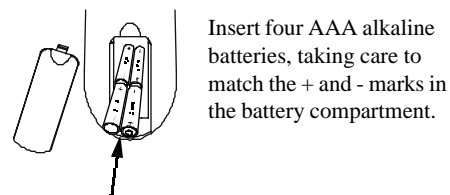
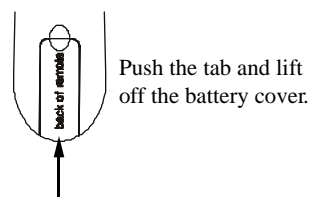
Press the corresponding button on the remote (color matched to the buttons on the screen) to view your music files by Album, by Artist, by Genre (Rock, Jazz, Country, etc.) or to list them all by track.

Press the Playlist button to view playlists that you previously set up in Media Manager.

Press Now Playing to view details on the track you're currently playing.

Use the up and down cursor keys on the remote to navigate around each screen and then use Play, Stop, Pause, etc. when you select the Album, Artist list, Genre, or playlist that you want to play.

INSTALL THE BATTERIES IN THE REMOTE.



BUTTON DESCRIPTIONS

Setup Used to setup the remote to control your TV or audio system (see page xx):

Learn Learns TV/Audio codes not in the remote's library (see page xx):

Power Hides/Reopens Lola. Also operates your TV/Stereo.

PC, TV, Audio Changes the remote's control from Lola, to TV, to audio system, respectively.

X10 Used for Home Control functions.

0-9 Selects track numbers directly.

Add/Delete Marks a track to be added to a playlist, or excluded from play.

A/B Selects input mode on your TV.

Album, Artist, Genre, Track Selects how you want to display/select your music files.

Up, Down, Left, Right Arrows Moves around the current list displayed. Works like a joystick.

Enter Opens the current selection. (Like pressing joystick button).

Page Up and Down Moves up and down through screens.

Playlist Displays your play lists.

Playing Displays info on the track that's playing.

Top, End, Find, Order Used to move around within, and organize your music files. Top and end go to the top and end of a list. Find lets you find albums/artists/tracks by name using the ABC, DEF, etc., on the numeric buttons (like you enter names on a cell phone). Order lets you rearrange the order of albums/artists/tracks.

Play, Stop, Pause, FF, REW, Scan+/- Used like you would use on your CD player.

Play Plays the currently highlighted selection. Also, with Add/Delete, used to exclude a track from play.

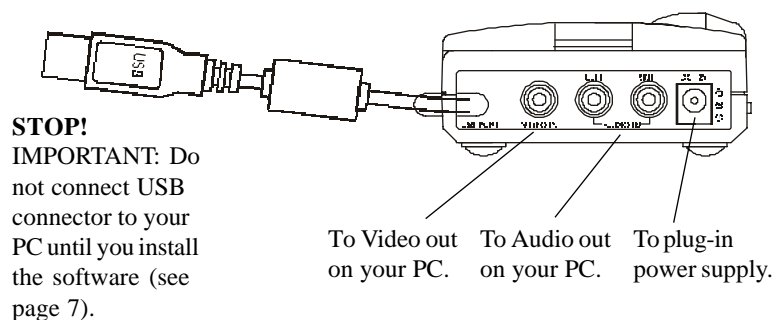
Record Saves the track exclusion for every time Lola is run.

See the help in the Lola software for more information. To access the help, right-click your mouse button while at your PC.

—CONNECTING UP THE AUDIO SENDER—

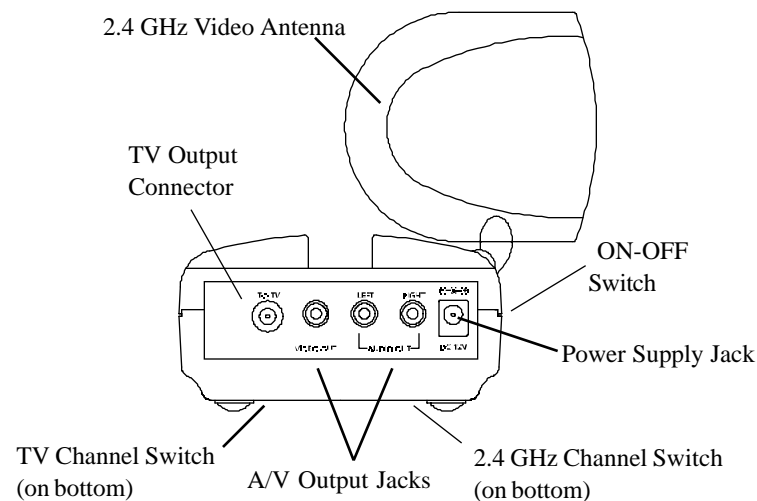
(SKIP PAGES 14 THRU 16 IF YOU HAVE THE BASIC SYSTEM)

1. Connect the jack on the audio cable (supplied) to the speaker/headphone jack, or line out jack on your PC's sound card. Use adapter if needed.
2. Connect the red RCA plug to the jack labelled AUDIO RIGHT and the white RCA plug to the jack labeled AUDIO LEFT on the A/V Sender.
3. Connect the yellow RCA plug on the supplied video cable to the Video out jack from your PC. If your PC has an S-Video Out jack you can use the supplied adapter.
4. Plug the other end of the video cable (yellow plug) to the video IN jack on the A/V Sender.
5. Set the channel switch (on the TOP of the unit) to channel A (to the RIGHT).
6. Plug the A/V Sender's Power Supply into a convenient 120 volt wall outlet and plug its jack into the Audio Sender.
7. Turn the power switch (on the side of unit) on.
8. Position the A/V Sender in a convenient location and orient the antenna so that the flat side points in the direction of the room where you will be installing the Receiver.

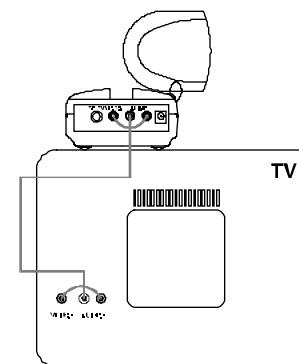


—CONNECTING UP THE RECEIVER—

Connecting the receiver to your TV lets you see the picture displayed on your PC's monitor on a TV located up to 100 ft. away from your PC.



1. Connect a set of Audio/Video cables to the A/V OUT jacks on the A/V Receiver. Connect the other end to your TV.
2. Plug the Audio/Video Receiver's Power Supply into a 120 volt wall outlet and plug its jack into the Audio/Video Receiver.
3. Turn power switch on (on side of unit).
4. Position the Audio/Video Receiver in a convenient location such as on top of the TV and orient the antenna so that the flat side points in the direction of the room where you set up the Audio/Video Sender.

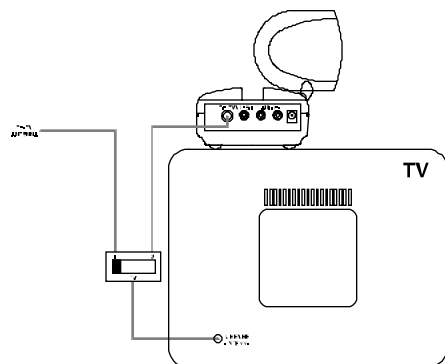


CONNECTING UP THE RECEIVER, CONT.

IF YOUR TV DOES NOT HAVE A/V CONNECTORS

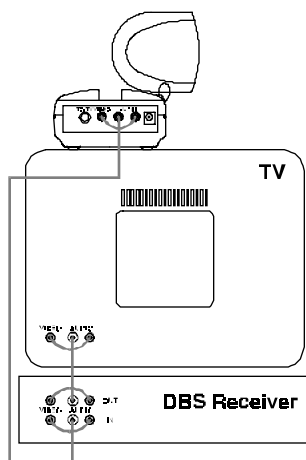
You can use the supplied coaxial cable to connect the TV OUT socket on the Audio/Video Receiver to the Antenna input on your TV. If you already have an antenna connected to your TV, you will need to use a TV antenna splitter.

Set your TV and the TV Channel switch on the Audio/Video Receiver (on bottom) to the same channel (3 or 4).



IF YOUR TV IS ALREADY HOOKED UP TO A SATELLITE RECEIVER OR OTHER A/V DEVICE

If a Satellite Receiver or other A/V component is connected to your TV using Audio/Video cables, you can connect the Audio/Video Receiver to the free LINE IN jacks on the component. If there are no LINE IN jacks, you will need to use a TV antenna splitter as described above.



ADVANCED OPTIONS

Using the remote to control your TV or Cable Box or Audio System

The remote can be set up to control the volume, channel etc. on your TV or audio system as follows.

1. Turn on the device you want to control (TV, Cable Box or Audio system).
2. Press and release mode button for the device you want to control (TV, Cable, or Audio).
3. Press and hold SETUP until the green LED indicator under the button you pressed in step 2 lights steadily. Release SETUP.
4. Enter the 3 digit Code from the Library Code Table on page 17. The LED turns off after the last digit entered.
5. Point the remote at the device and press the POWER button. Your device should turn off.

Code Search.

If you can't find the code for your device in the Code List you can search for it:

1. Turn on the device you want to control (TV, Cable, or Audio system).
2. Press and release mode button for the device you want to control (TV, Cable, or Audio).
3. Press and hold SETUP until the green LED indicator under the button you pressed in step 2 lights steadily. Release SETUP.
4. Press the CH+ (or Power) button on the remote repeatedly until your TV changes channel (or your Audio device turns off). If you overshoot you can press Ch -.
5. When your device responds, press Mute to install the code.

Code Identification.

To identify what code is stored in the remote:

1. Press and release mode button for the device you want to control (TV, Cable, or Audio).
2. Press and hold SETUP until the green LED indicator under the button you pressed in step 2 lights steadily. Release SETUP.
3. Press SETUP again.
4. Press each digit number in turn. When the indicator blinks off, the button you pressed when it blinked is the first digit of the code set in the remote.
5. Repeat step 4 twice to find the second and third digits.

Learning Codes.

If you can't find the code for your TV, Cable or audio system in the code library, you can learn the commands you need from your existing remote:

1. Point your existing remote at the UR89A Remote with a distance of about 1 inch between remotes.
2. Press the mode button that matches the equipment you want to learn (TV or Audio). The LED blinks once.
3. Press and hold SETUP until the green LED indicator under the button you pressed in step 2 lights steadily. Release SETUP.
4. Press and release the LEARN button. The LED blinks once.
5. Press and release the button on the UR89A Remote that you want to teach. (e.g. POWER) The LED blinks once.
6. Press the matching button on your existing remote that you want to learn. Hold the button until the LED on the UR89A Remote blinks off.
7. Repeat steps 5 and 6 for each button you want to learn.
8. When you've finished learning all the keys, press SETUP.

Note you can only learn codes under Power, Vol +/-, Ch+/-, and Mute.

Code List

TV

ABEX	185
ACME	003 031
ADA	009
ADC	009 002
ADMIRAL	001 173
ADVENTURA	174
AIKO	058
AIWA	195 196
ALLERON	046
AMARK	020
AMTRON	053
AKAI	002
AMSTRAD	189
ANAM NATIONAL	003 025 042 053 193
AOC	004 005 007 009 014 132 156 175
ARCHER	020
AUDIOVOX	053
BANG & OLUFSEN	190
BELCOR	004
BELL & HOWELL	000 001 049
BRADFORD	053
BROKSONIC	136 147
BROKWOOD	004
CANDLE	004 008 009 174
CAPEHART	175
CELEBRITY	002
CENTURION	009
CETRONIC	042
CHANGHONG	214
CITIZEN	001 004 008 009 042
.....	053 058 105 109 177
CLAIRTONE	014
CLASSIC	042 214
COLORTYME	004 009 010
CONCERTO	004 009
CONCIERGE	121
CONTEC/CONY	012 013 014 042 053
CRAIG	042 053
CROWN	042 053
CURTIS MATHES	000 001 004 009 015
.....	031 049 105 109 130
CXC	042 053
DAEWOO ..	004 005 009 017 018 019 042
.....	058 082 085 097 100 126 127 130 138
DAYTRON	004 009
DIMENSIA	000 031
DUMONT	004 121
DYNASTY	042
ELEKTRA	001
ELECTROBAND	002 014
ELECTROHOME	003 004 009 022 133

EMERSON	004 009 014 023 024 025
.....	026 027 030 032 033 034 035 036 037
.....	038 039 040 041 042 043 045 046 049
.....	053 116 135 147 155 177 179 189 198
ENVISION	004 009
FISHER	013 049 050 180 209
FUJITSU	046 197
FUNAI	042 053 046 155 189 198
FUTURETEC	042 053
GE	000 003 004 009 022 031 044 052
.....	054 055 087 092 103 107 125 164 181
GIBRALTER	004 121
GOLDSTAR	004 005 009 056
.....	057 133 155 156 172
GRUNDY	046 053
HALLMARK	004 009
HARVARD	053
HITACHI	001 004 009 013 059 060
.....	061 088 091 137 139 140 141
.....	142 143 144 145 146 179 210
IMA	053
INFINITY	062
INTEQ	121
JANEIL	174
JBL	062
JCB	002
JC PENNY	000 004 005 008 009
.....	022 031 052 054 055 063
.....	087 105 107 109 172 181
JENSEN	004 009
JVC	013 054 055 060 065 067 089
KAWASHO	002 004 009
KAYPANI	175
KEC	042
KENWOOD	004 009 133
KLOSS NOVABEAM	068 069 174
KONKA	016 047 066 157 158 176
KTV	014 021 042 053 070 116 177
LODGENET	000 001
LOEWE	062 211
LOGIK	000 001
LUXMAN	004 009
LXI	000 004 009 031
.....	049 062 107 109 181
MAGNAVOX	004 008 009 062 068 069
.....	074 075 076 077 089 133 163 165
MAJESTIC	000 001
MARANTZ	004 009 062
MEGATRON	004 009 059
MEI	014
MEMOREX	000 001 004 009
.....	046 049 051 135
MGA	004 005 009 022 046 133 180
MIDLAND	054 055 107 121 172 181
MINUTZ	052



MITSUBISHI	004 005 009 022 046
.....	081 089 132 133 180
MONTGOMERY WARD	000 001
MOTOROLA	003 173
MTC	004 005 009 014 105 109
MULTITECH	053
MULTIVISION	084
NAD	004 009 109 185
NEC	003 004 005 009 010 085 089 095
NIKEI	042
NIKKO	004 009 058
NTC	058
ONKING	042
ONWA	042 053
OPTIMUS	170 185
OPTONICA	095 173
ORION	035 121 135
PANASONIC	003 054 055 062
.....	070 148 170 171
PHILCO	003 004 005 008 009 062
.....	068 069 074 075 077 133
PHILIPS	003 004 006 008 062 068 069
.....	074 075 076 086 087 089 133 163
.....	183 184 205 206 207 208 212 213
PHILIPS/MAGNAVOX	183 184
.....	204 208 213
PILOT	004
PIONEER	004 009 090 179 185
PORTLAND	004 005 009 058
PRECISION	166
PRICE CLUB	105
PRISM	055
PROSCAN	000 031 107 181
PROTON	004 009 093 175 186 192
PULSAR	121
PULSER	004
QUASAR	003 054 055 062
.....	070 148 170 171
RADIO SHACK . 000 004 009 031 041 042	
.....	048 049 053 095 133 155 170 172 194
RCA	000 003 004 005 007 009 011
.....	048 078 082 092 094 096 098
.....	099 101 102 103 107 113 125 129
.....	133 167 179 181 187 188 191 194
REALISTIC	000 004 009 031 041 042
.....	048 049 053 095 133 155 170 172
RHAPSODY	014
RUNCO	121
SAMPO	004 009 172 175
SAMSUNG	004 005 009 015 104
.....	105 106 109 133 172
SAMSUX	009
SANSUI	135 136
SANYO	004 013 049 108 110 180 209
SCOTCH	004 009

SCOTT	004 009 024 035 042 046 053
SEARS	000 004 009 013 031 046 049
.....	105 107 109 110 133 180 181 189
SHARP	004 009 079 095 111
.....	112 114 122 123 124 173
SHOGUN	004
SIGNATURE	000 001 023
SIMPSON	008
SONIC	014
SONY	002 006 071 128
SOUNDESIGN ... 004 008 009 042 053 046	
SPECTRAVISION	203
SQUAREVIEW	189
SSS	004 042 053
STARLITE	053
SUPREMACY	174
SUPREME	002
SYLVANIA	004 008 009 062 068
.....	069 074 075 076 077
.....	133 155 161 163 189 198
SYMPHONIC	033 053 155 189 198
TANDY	173
TATUNG	003
TECHNICS	054 055
TECHWOOD	004 009 054 055
TEKNIKA . 000 001 004 005 008 009 013	
.....	042 046 053 058 076 105 109 170 174
TELECATION	117
TELERENT	000 001
TERA	004 186
TMK	004 009
TOSHIBA	013 049 089 105 109
.....	117 118 120 159 178
UNIVERSAL	052 087
VICTOR	060
VIDTECH	004 005 009
VIKING	174
WARDS	000 001 004 005 009 024
.....	031 033 046 052 062 068 069
.....	074 075 076 087 095 119 133
WHITE WESTINGHOUSE	097 100
.....	130 155
YAMAHA	004 005 009 133
ZENITH	000 001 004 023 038
.....	058 059 064 121 135 136 153

Cable

ABC	461 462 463 464 465 466 467
ADELPHIA	596
ALLEGRO	524 525
AMERICAST	527
ANTRONIX	468 469
ARCHER	468 469 470 471
AT & T	511

CABLETENNA	468
CABLEVIEW	468
CENTURY	471
CITIZEN	471
COLOUR VOICE	472 473
COMTRONICS	474 475
CONTEC/CONY	476
EASTERN	477
GARRARD	471
GC ELECTRONICS	469
GEMINI	478 479 536
GE	549
GENERAL INSTRUMENT	463 509
.....	511 513 514 518 528 529 530 531
HAMLIN	480 481 482
HITACHI	463
HYTEK	462
JASCO	471
JERROLD	461 463 464 465 467 478
.....	484 509 510 511 526 528 529
MAGNAVOX	485
MEMOREX	486
MOVIE TIME	462 487
NSC	462 487
OAK	462 476 489
PACE	532
PANASONIC	460 508
PARAGON	486
PHILIPS	471 472 473 479
.....	485 490 491 492
PHILIPS/MAGNAVOX	505 534
PIONEER	493 494 498
PULSAR	486
RADIO SHACK	505 525 534
RCA	460 507
REALISTIC	469
REGAL	482
REGENCY	477
REMBRANDT	463
RUNCO	486
SAMSUNG	474 494
SCIENTIFIC ATLANTA	466 496 497
.....	498 535 596 607
SIGNAL	474 478
SIGNATURE	463
SL MARX	474
SPRUCER	460
STANDARD COMPONENTS	499
STARCOM	461 467 478
STARGATE	474 478
STAR SIGHT	520
STAR SIGHT CABLE SERVICE	507
STARQUEST	478
STAR TRAK	516
TANDY	500
TELEVIEW	474

TELEWEST	532
TEXSCAN	499
TOCOM	464 501 513
TOSHIBA	486
TUSA	478
TV86	487
UNIKA	468 469 471
UNITED ARTISTS	462
UNITED CABLE	461
UNIVERSAL	468 469 470 471 502
VIDEOWAY	504
VIEWSTAR	475 485 487 500
VIDEO TECH	550
ZENITH	486 488 503 517 519 520
.....	521 522 523 524 525 527 533

Audio

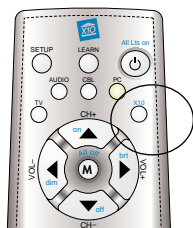
AIWA	839 842 851 860
CARVER	825
CITIZEN	826
DENON	803 817
FISHER	814 821
GOLDSTAR	766
HARMAN KARDON	804 818
JVC	790 813 819
KENWOOD	683 808 816 828 832 869
MAGNAVOX	796 814
MARANTZ	688 824
MITSUBISHI	877
NAD	721 739 743
ONKYO	805 811 812
OPTIMUS	667 747 748 749
.....	751 752 754 793
PANASONIC	810 815
PHILIPS	814 823 824 825
PIONEER	837 866 867 878
RADIO SHACK	706 754 793 806 865
.....	866 867 868 875 878 879
RCA	717 772 781 795 827 866
.....	867 870 871 872 875 878 879
REALISTIC	822
SANYO	705
SCOTT	768
SHARP	671 684 809
SHERWOOD	706 806 858 859
SONY	778 785 797 798 799
.....	833 834 835 836 843
TEAC	710 807 855 856 857
TECHNICS	791 810 815 823 863 864
VENTURER	745
YAMAHA	801 802 838 840
.....	841 846 847 848 849
ZENITH	676 730 749 759
.....	765 766 784 814 850



HOME CONTROL

The X10 button on the Lola remote control is your gateway to a world of useful control and automation solutions built by X10.

Why enter a dark room when there is a simple and affordable solution that can keep you safe and secure? From a simple remote control that can turn on a lamp, to a full-blown automation system, X10 provides you with all the products you need.



With the correct components in your X10 system, you can have all of these powerful options at your control:

- Give your home a secure appearance by scheduling when lights and other electronics turn on and off
- Distribute audio and video to stereos and televisions using wireless technology
- Turn on house lights while sitting in your car
- Schedule sprinkler systems
- Control your lights and electronic devices using your personal computer

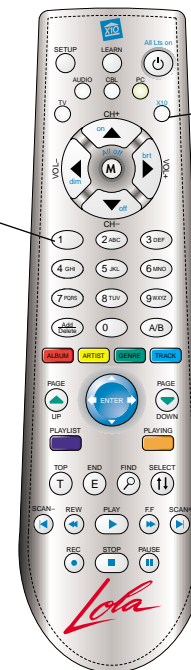
X10's control and automation products are easy to install and extremely affordable. Visit X10.com today for more information and the latest products to build and enhance your X10 system.



CONTROLLING X10 MODULES

Here's how to control X10 modules with your Lola Remote Control. The remote is set to House Code A by default. See next page to change it.

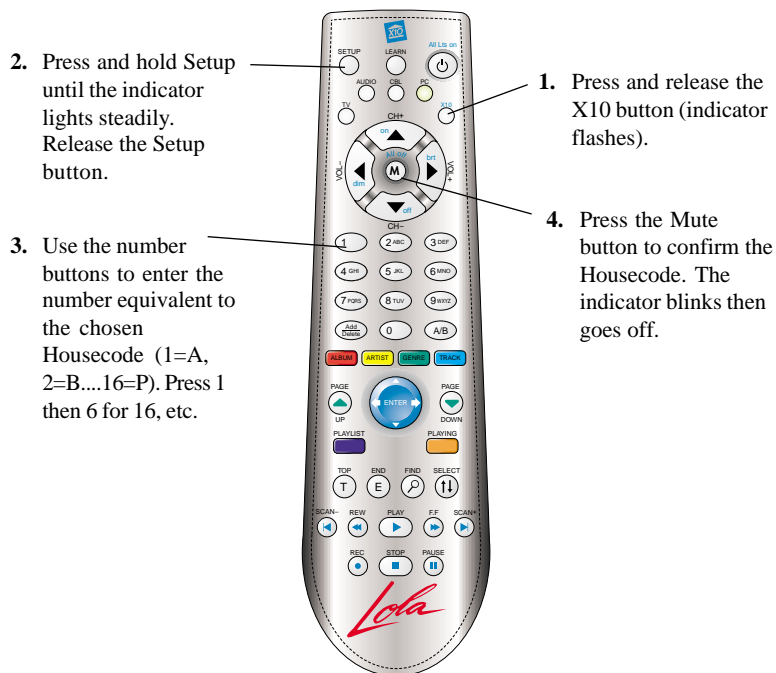
2. Use the number buttons to select the Unit Code number of the chosen module. (You can press 1, then 6 for Unit Code 16).



1. Press and release the X10 button.
3. Press the appropriate button (labeled in blue) for the function you require (On, Off, Bright, Dim, All Lights On, All Units Off).

Changing the House Code for the Remote

The Remote comes set to House Code A by default. To change the House Code on the remote follow steps 1 through 4 below:



Changing the Master Code for the Remote

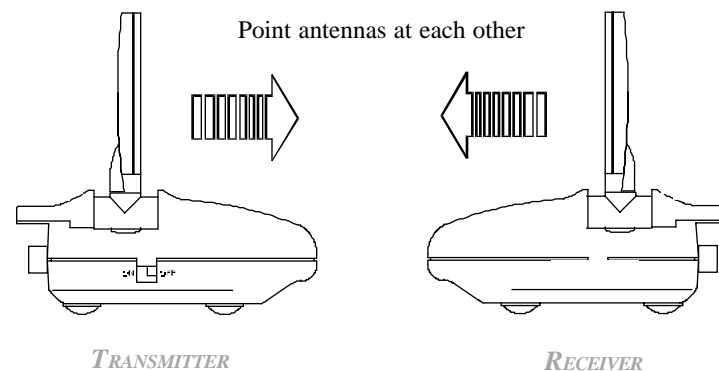
You can use up to 16 remotes within 100 ft. of each other without interfering with each other by setting each remote to a different Master Code. To do this, press and release PC. Then press and hold Setup until the indicator starts to blink. Release Setup (the indicator blinks a number corresponding to its Master Code 1-16 and then stays on). While the indicator is on, enter a new number for this remote (1-16) and then press setup. The indicator blinks back the new setting and then stays off. Repeat this process for each remote, setting a unique number (1-16) for each remote.

FINE TUNING YOUR SYSTEM

The Lola Wireless Audio/Video Sender usually works best with the flat faces of the antennas on the Sender and Receiver units facing each other (see diagram below). Sometimes, however, reflections and other effects in your home may affect the signal so that some adjustment of either the Sender or Receiver antenna might be necessary to get the best signal.

IF YOU ARE NOT GETTING ANY SIGNAL AT ALL:

Check that the CHANNEL slide switch (labeled A, B, C, D) on both units is set to the same letter.



IF THE SIGNAL IS POOR, OR IF THERE IS INTERFERENCE:

Try changing the channel on both units. Do this by adjusting the CHANNEL slide switch on each unit to any position from A to D. Make sure both units are set to the same channel.

—TROUBLESHOOTING—

Basic Version:

If the remote control doesn't control Lola:

- Check the USB cable on the CM19A is connected to your PC.
- Make sure you have installed the software from:
www.x10.com/software
- Make sure the tray icon is present in the Windows task bar. If it isn't run Lola from the Windows Start button, or desktop shortcut.
- Press the Power button on the remote to launch Lola.
- Replace the Remote's batteries.

If the range for the remote control is poor:

- Try locating the CM19A Receiver away from the PC and/or its monitor.

If there is no sound:

- Check the connections between your PC's sound card and your PC's speakers.

Deluxe Version:

If the remote control doesn't control Lola:

- Make sure the VT42A Audio/Video Sender is turned on.
- Check the USB cable on the VT42A is connected to your PC.
- Make sure you have installed the software from:
www.x10.com/software
- Make sure the tray icon is present in the Windows task bar. If it isn't run Lola from the Windows Start button, or desktop shortcut.
- Press the Power button on the remote to launch Lola.
- Replace the Remote's batteries.

If the range for the remote control is poor:

- Try locating the VT42A Audio/Video Sender away from the PC and/or its monitor.

If there is no sound:

- Check the connections between your PC's sound card and the audio-in jacks on the VT42A Audio/Video Sender (steps 1 and 2 on page 14).

If you are not getting any audio or video:

- There is a power light on the front of the Sender and Receiver. Check that both the Sender's and Receiver's power supplies are plugged in. Check that the ON/OFF switch on the Sender and Receiver are ON.
- Verify that your connections to the TV are correct. If you are using the RCA jacks, make sure you are using the appropriate input mode for your TV, try pressing the A-B button or the Video button on your TV's remote control to change the input mode (consult your TV's owner's manual, if necessary). If you are using the COAX cable, verify that the Receiver and the TV are on the same channel (3 or 4).

If the sound or video is poor, or there is interference:

- Try locating the VT42A Sender away from the PC and/or its monitor.
- Try changing the channel on both units. Do this by adjusting the CHANNEL slide switch on each unit to any position (A, B, C, or D).
- Try different positions for the antennas on the Sender and Receiver. Normally the flat faces on each antenna should point at each other. Sometimes, due to reflections, you might get a better picture with the Receiver's antenna pointing to the ceiling.
- Take a look at what the audio and video signal is passing through or near to get to the Receiver. Metal objects and electromagnetic fields can distort the signal. Try to keep the Receiver as far away from other devices as the RCA or Coax cables allow. In most cases, relocating the Sender or Receiver a few feet is enough to avoid the source of interference.
- Try unplugging/turning off any electromagnetic interference producing devices, such as a microwave oven, baby monitor, computer, wireless LAN, wireless speakers, cordless phone, cell phone, etc.

For more help please visit www.x10.com/support



FCC Caution

THIS DEVICE COMPLIES WITH PART 15 OF THE FCC RULES.

OPERATION IS SUBJECT TO THE FOLLOWING TWO CONDITIONS:

- (1) THIS DEVICE MAY NOT CAUSE HARMFUL INTERFERENCE, AND
- (2) THIS DEVICE MUST ACCEPT ANY INTERFERENCE RECEIVED, INCLUDING INTERFERENCE THAT MAY CAUSE UNDESIRE OPERATION.

This equipment generates and uses radio frequency energy, and if not installed and used properly, that is, in strict accordance with the manufacturers instructions, it may cause interference to radio and television reception. It has been type tested and found to comply with the limits for remote control devices in accordance with the specifications in Sub-Parts B and C of Part 15 of FCC Rules, which are designed to provide reasonable protection against such interference in a residential installation. However, there is no guarantee that interference will not occur in a particular installation. If this equipment does cause interference to radio or television reception, which can be determined by unplugging the equipment, try to correct the interference by one or more of the following measures.

- Reorient the antenna of the radio/TV experiencing the interference.
- Relocate the equipment with respect to the radio/TV.
- Move the equipment away from the radio/TV.
- Plug the equipment into an outlet on a different electrical circuit from the radio/TV experiencing the interference.
- If necessary, consult your local dealer for additional suggestions.

NOTE: Modifications to this product will void the user's authority to operate this equipment.

X10 Wireless Technology, Inc. Limited One Year Warranty

X10.com, a division of X10 Wireless Technology, Inc. (X10) warrants X10 products to be free from defective material and workmanship for a period of one (1) year from the original date of purchase at retail. X10 agrees to repair or replace, at its sole discretion, a defective X10 product if returned to X10 within the warranty period and with proof of purchase. If service is required under this warranty:

Call 1-800-442-5065, visit www.x10.com, or e-mail support@x10.com.

For help or more information on setup, please visit:

<http://www.x10.com/support>

**X10.com, a division of X10 Wireless Technology, Inc.
3824 North 5th St., Suite C,
North Las Vegas, NV 89032**

